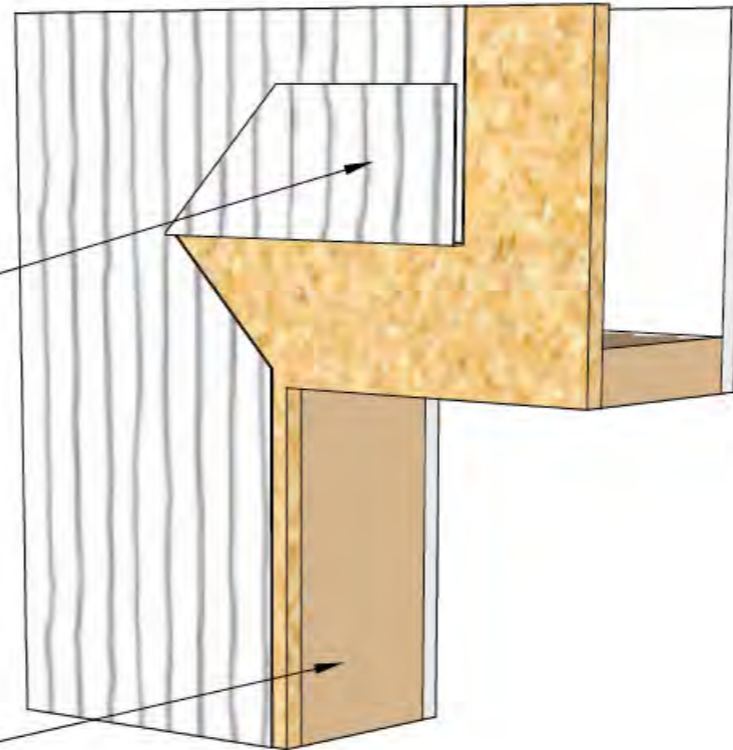


Window Installation

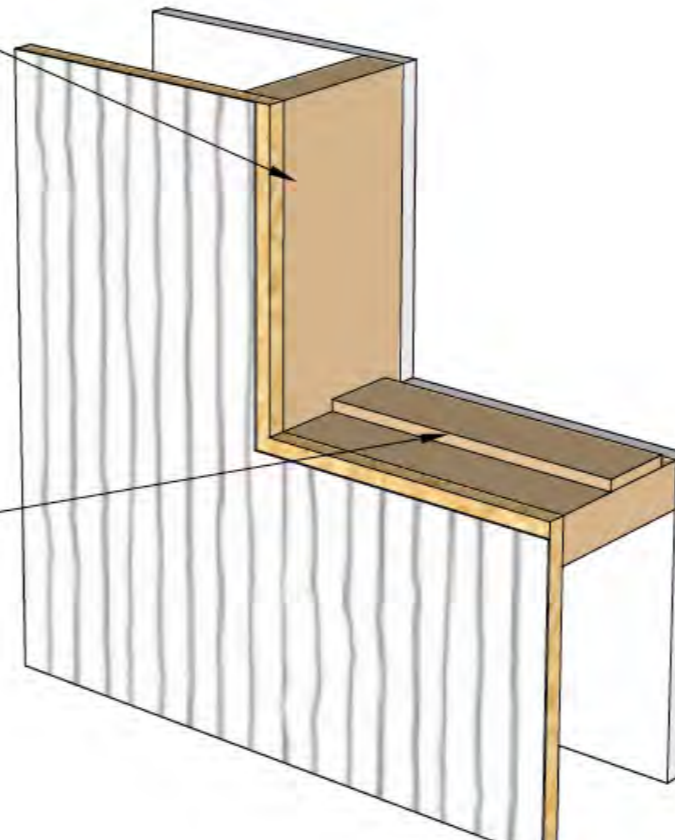
- reduce the load (head flashings, overhangs, drips, kerfs)
- integrate control layers
- isolate the window from the wall cavity
- assume imperfection:
 - provide redundancy
 - provide drainage

Step 1

Fold wall sheet WRB up at head



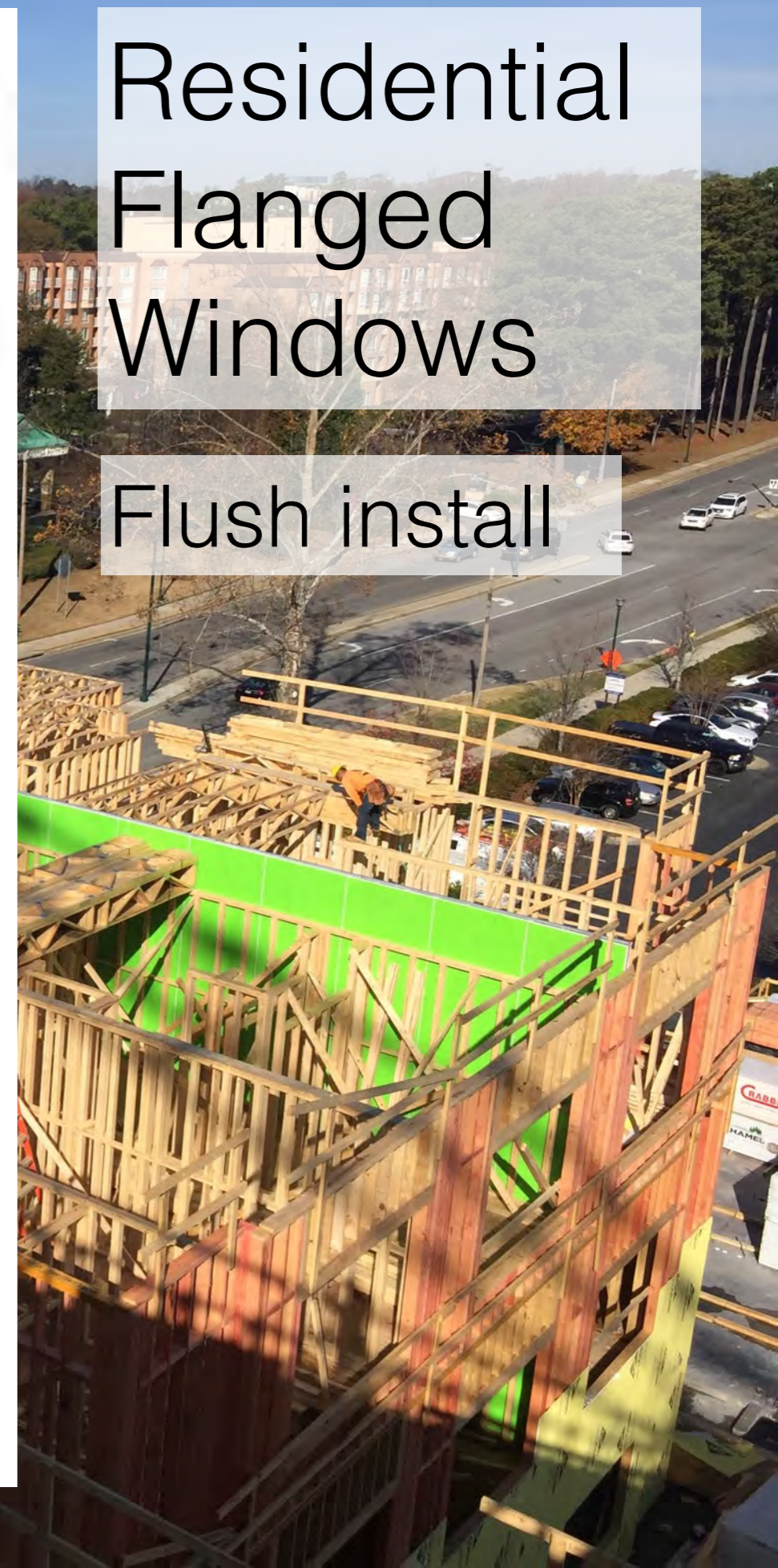
Cut wall sheet WRB at jambs



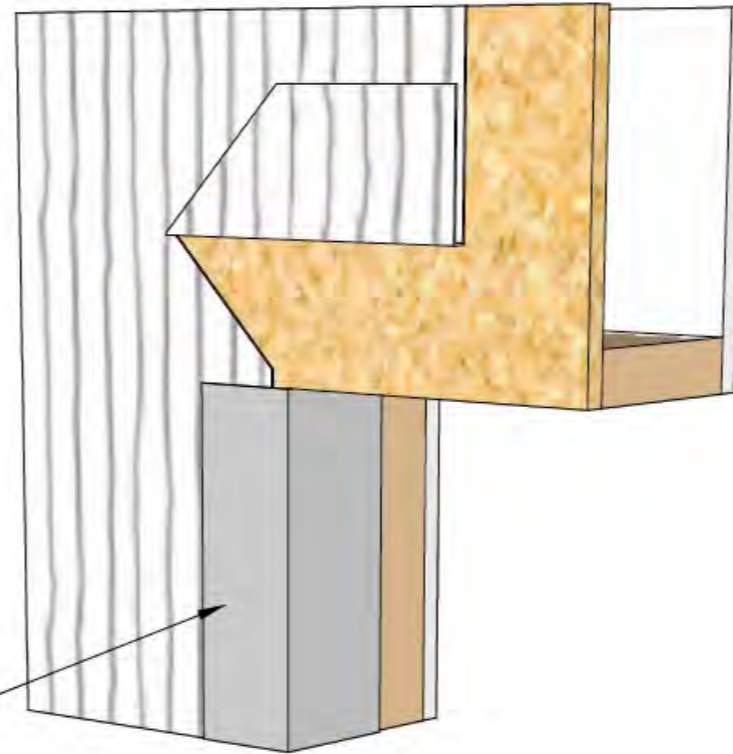
Continuous back dam blocking.
Recommend 3/8" to 3/4" in height placed 3/8" inboard of interior edge of storefront frame.

Residential Flanged Windows

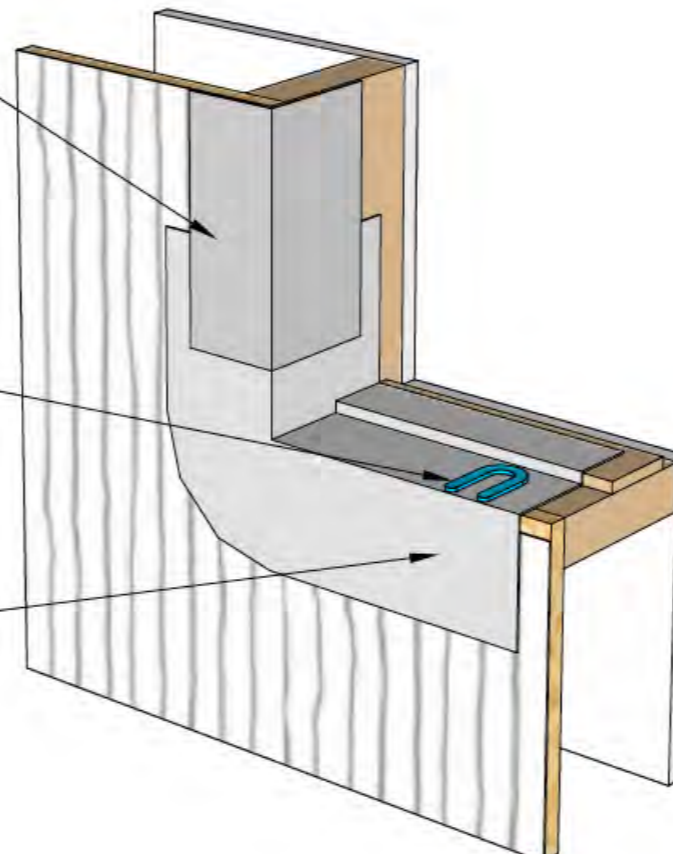
Flush install



Step 2



Line jambs with self adhered membrane flashing



Window shim. Recommend 1/8" minimum.

Flexible membrane pan flashing returned up back dam angle

Residential Flanged Windows

Flush install

Residential Flanged Windows

Flush install

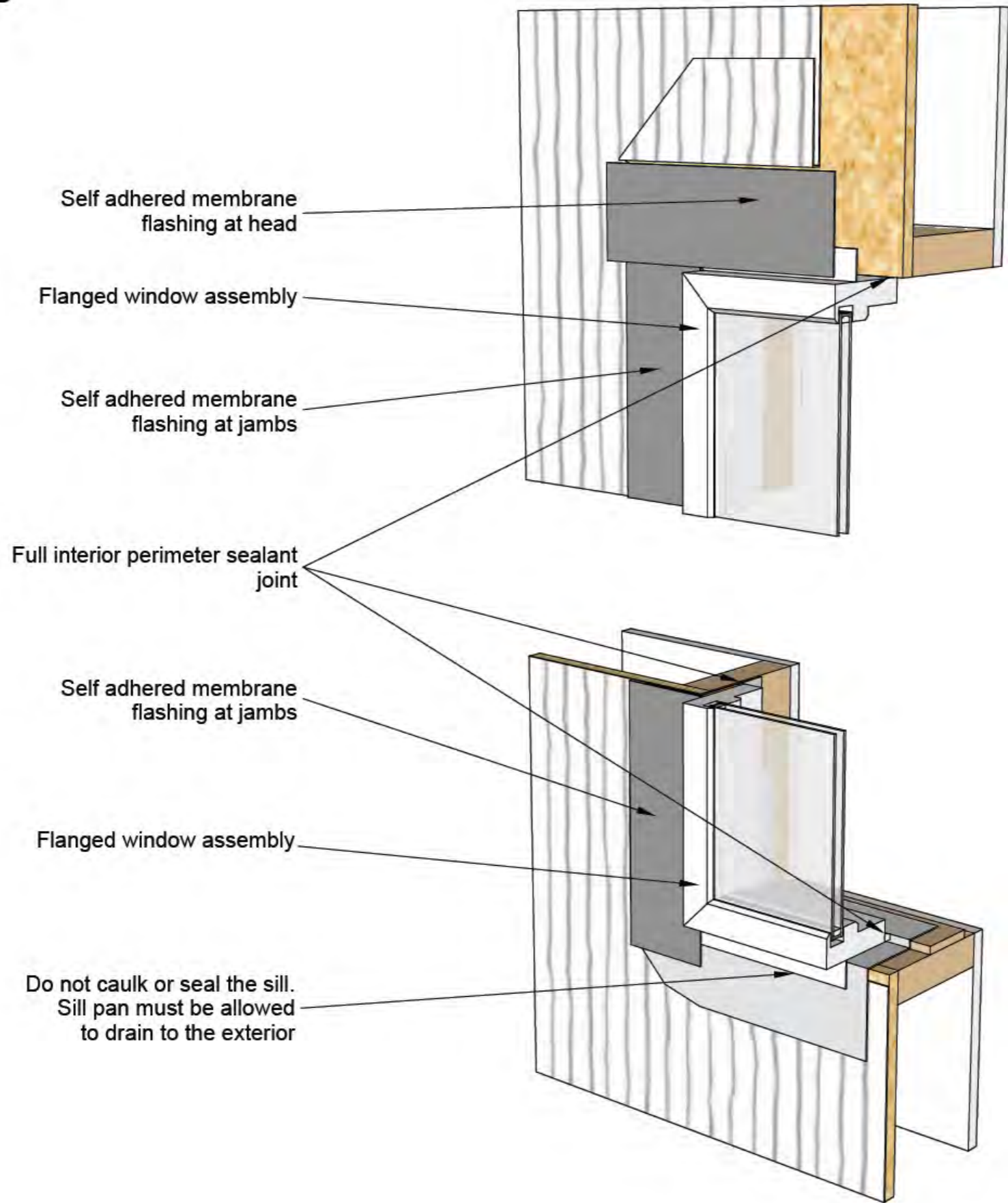


Residential Flanged Windows

Flush install

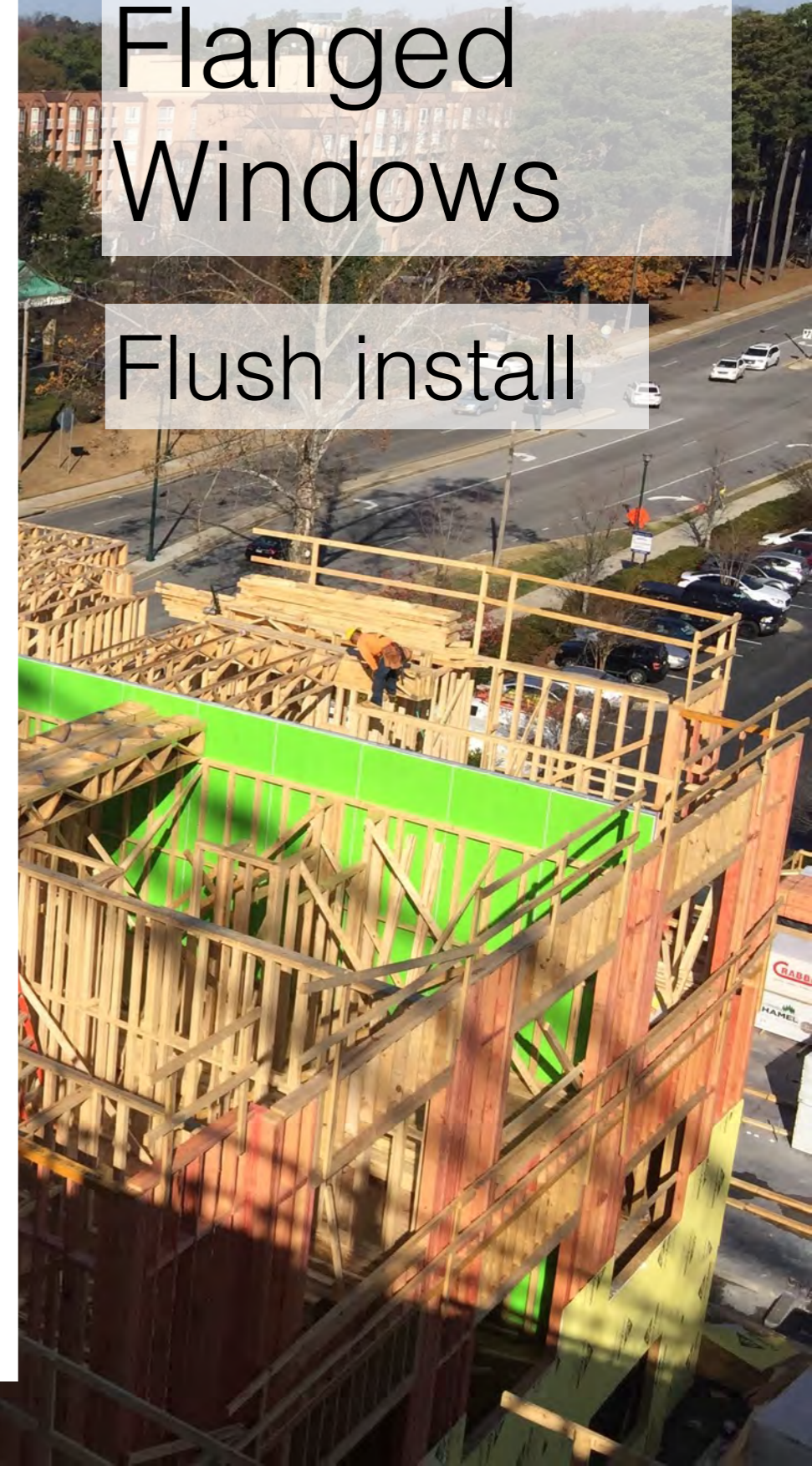


Step 3



Residential Flanged Windows

Flush install



Residential Flanged Windows

Flush install



Residential Flanged Windows

Flush install

DuPont™
Flashing Sys

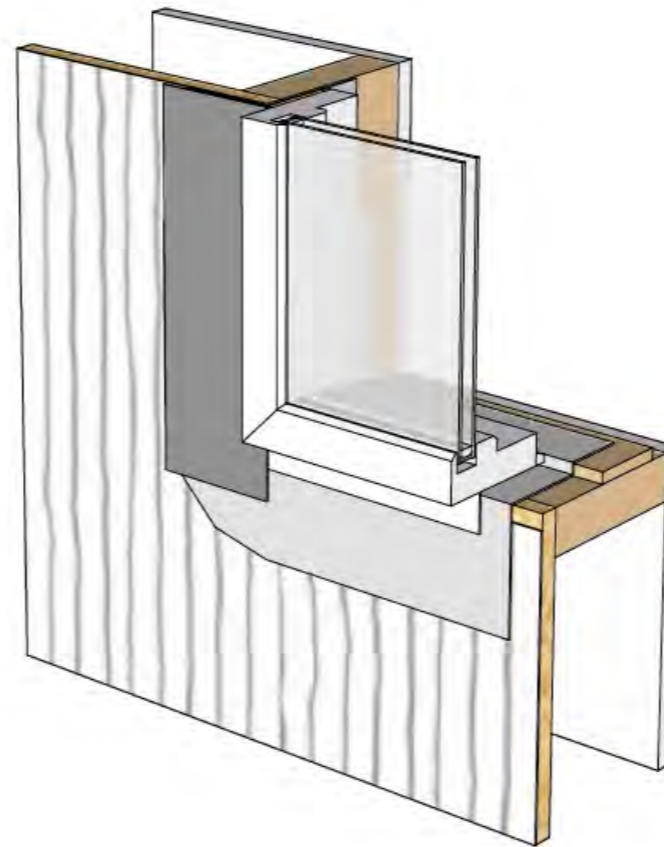
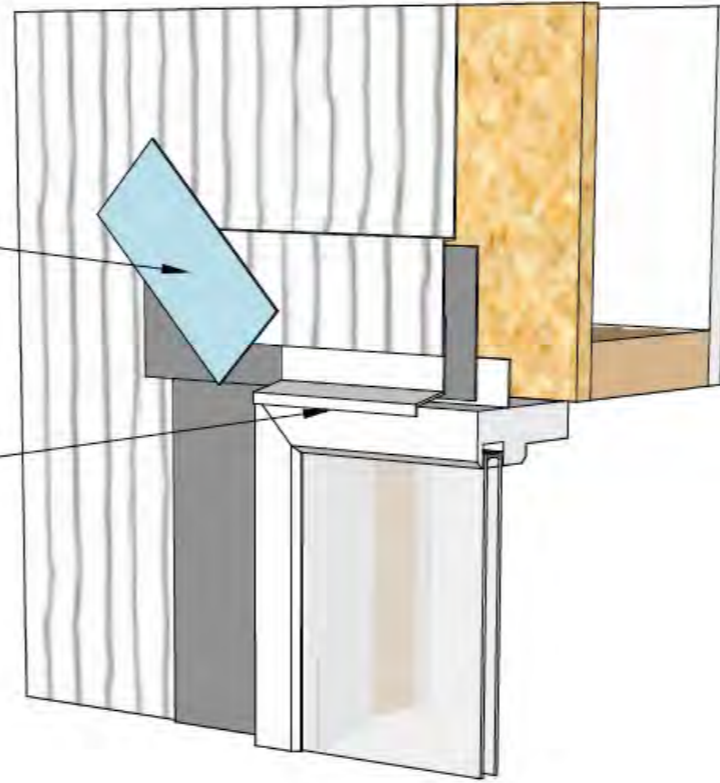
ould be
ain water
r-resistive bar

alWrap^{md} est combustible

Step 4

Fold and tape WRB over self adhered membrane flashing at head

Head flashing recommended for all panel claddings, as well as all vertically mullied windows. Optional for masonry veneer and windows with trim that will provide a secondary flashing above the window



Residential Flanged Windows

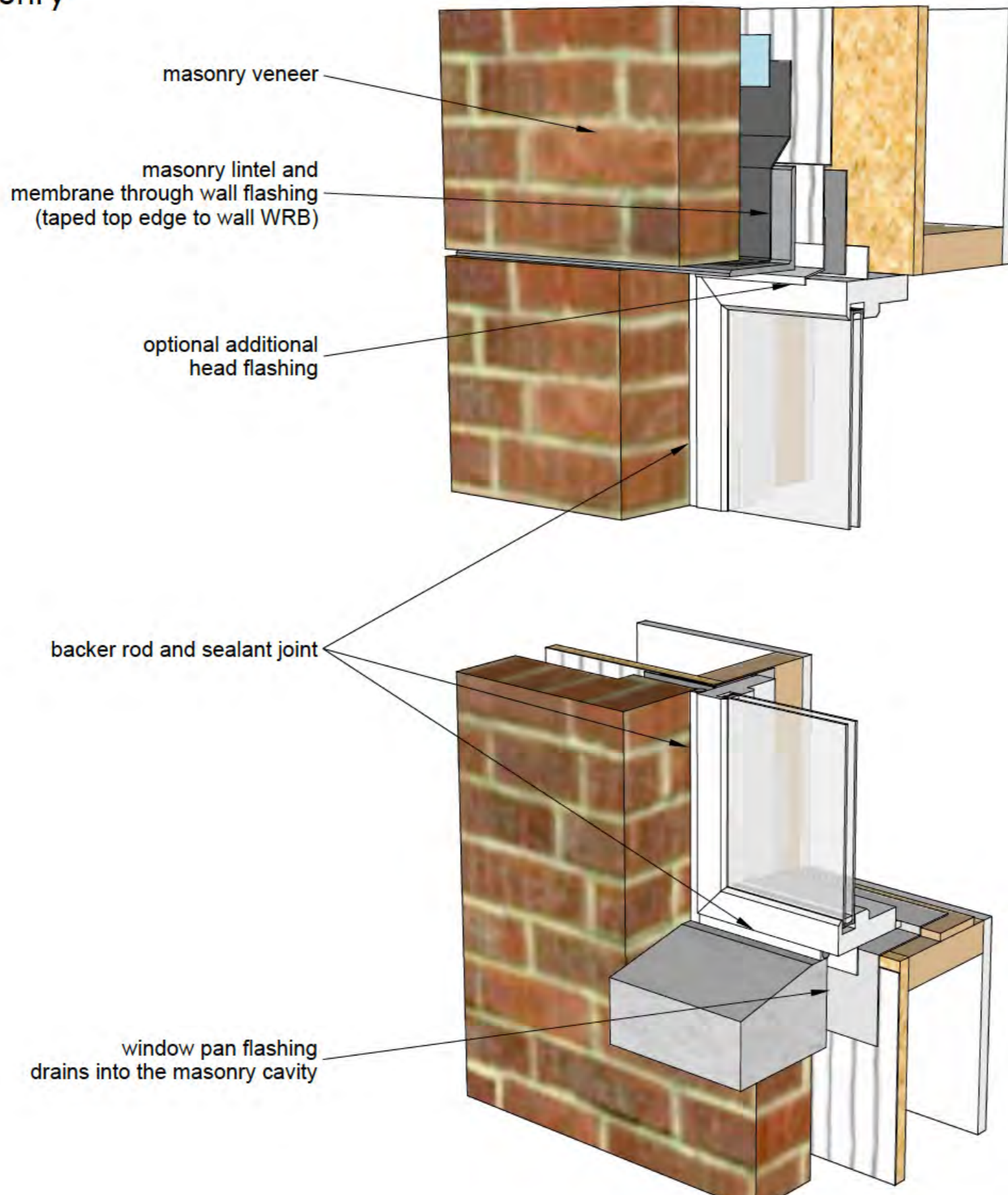
Flush install

Residential Flanged Windows

Flush install



Masonry



Residential Flanged Windows

Flush install

Fiber Cement

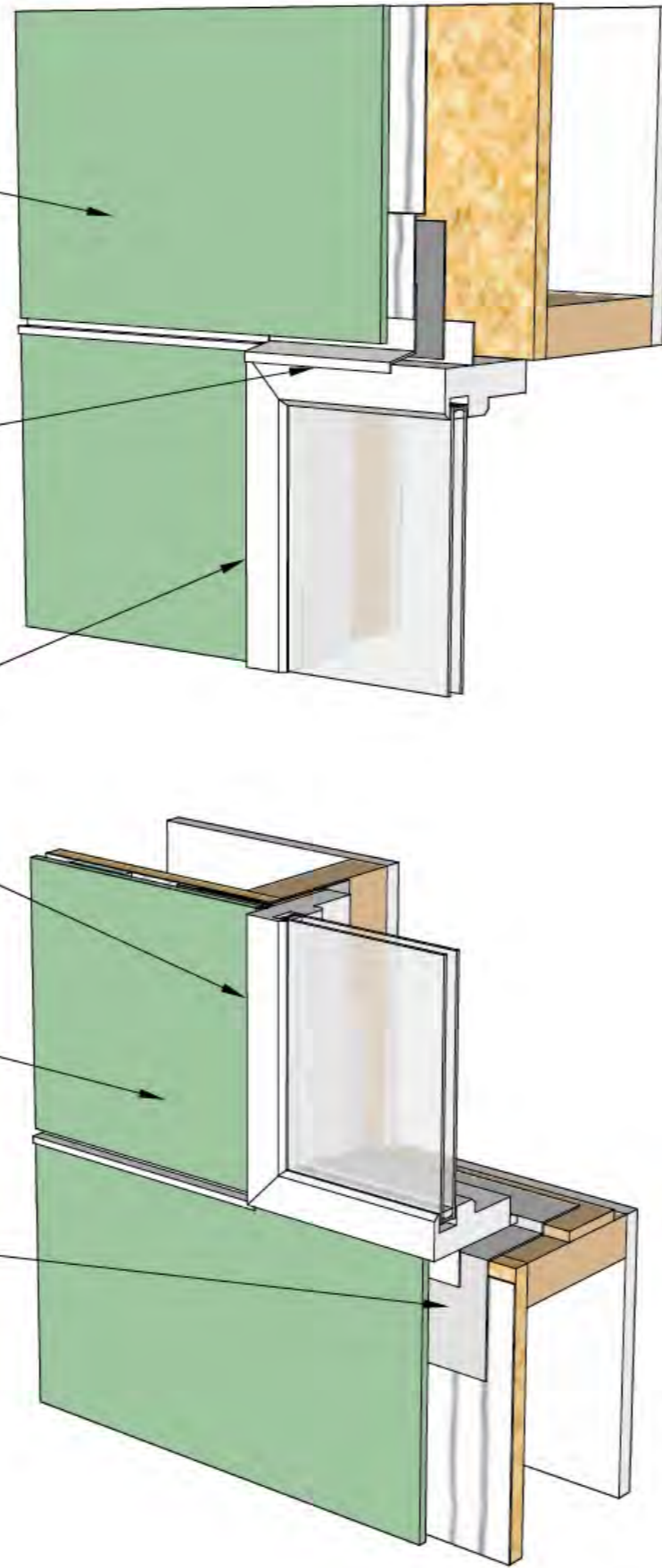
fiber cement panel siding
on 3/8" minimum furring strips

allow fiber cement panel siding
to drain out over
window head flashing

backer rod and sealant joint
between window frame and
panel siding at the jambs
and sill

fiber cement panel siding
on 3/8" minimum furring strips

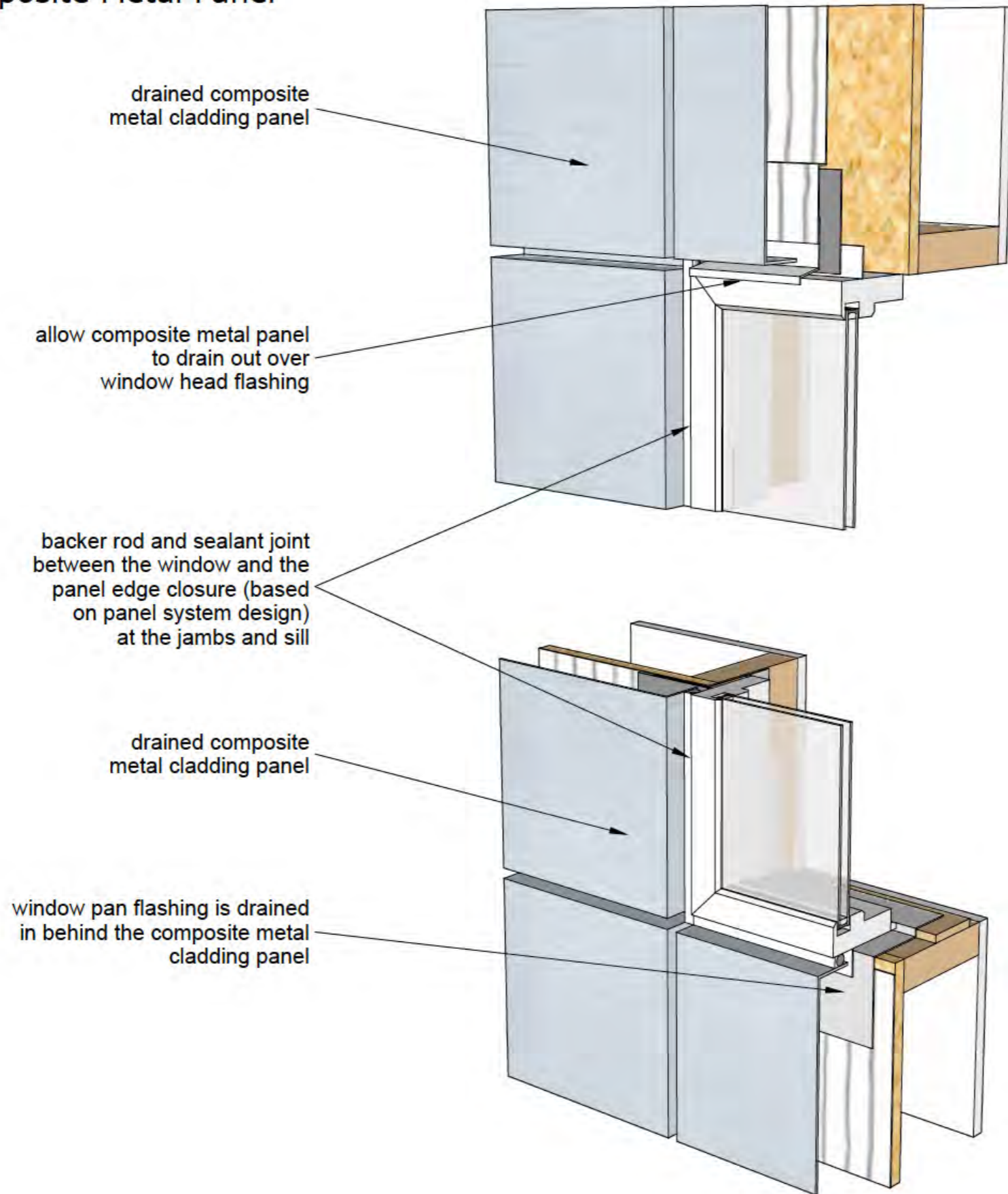
window pan flashing is drained
in behind the fiber cement
panel siding



Residential Flanged Windows

Flush install

Composite Metal Panel



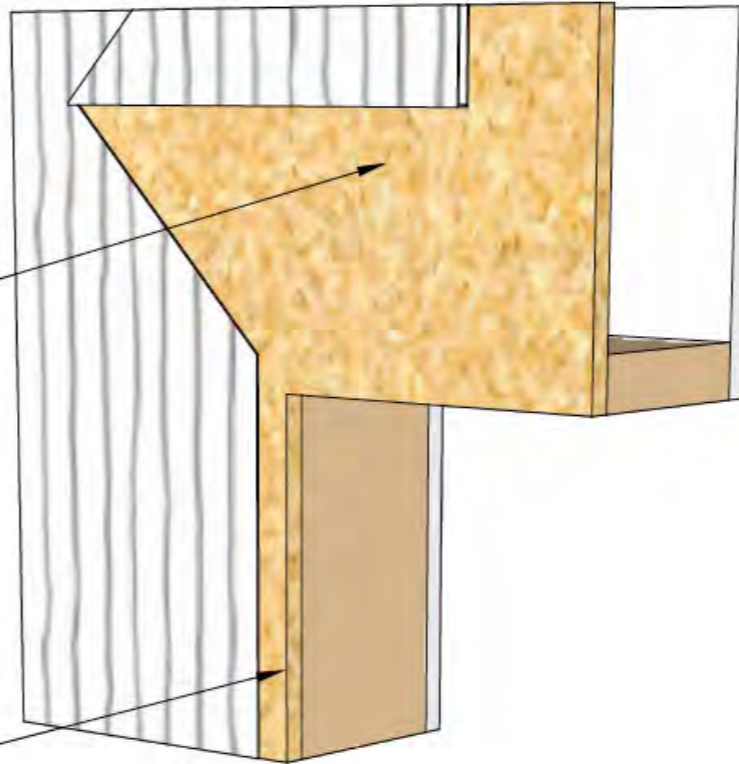
Residential Flanged Windows

Flush install

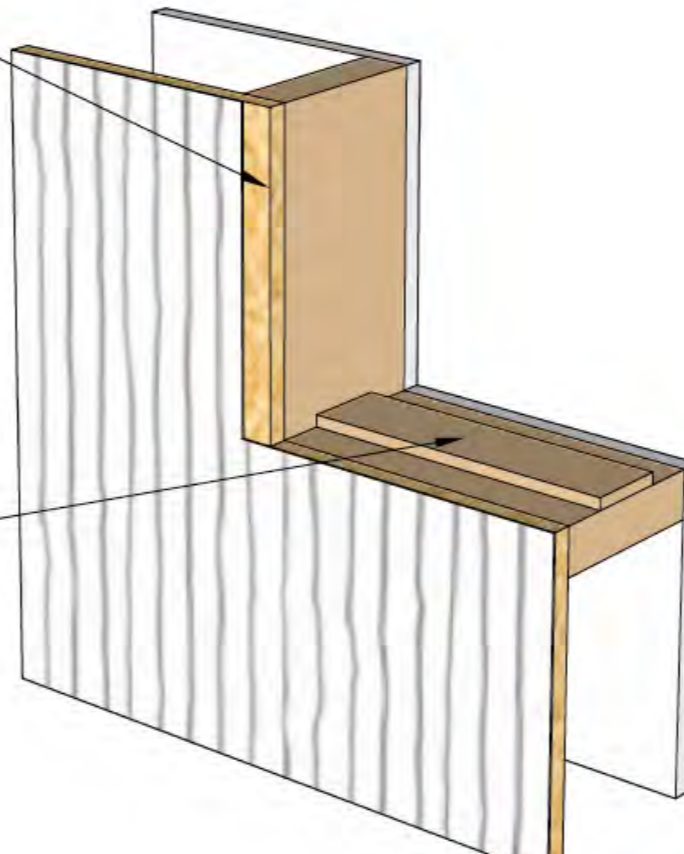
Step 1

Residential Flanged Windows Bucked-out

Fold wall sheet WRB up at head



Cut wall sheet WRB at jambs



Continuous back dam blocking. Recommend 3/8" to 3/4" in height placed 3/8" inboard of interior edge of storefront frame.

Step 2

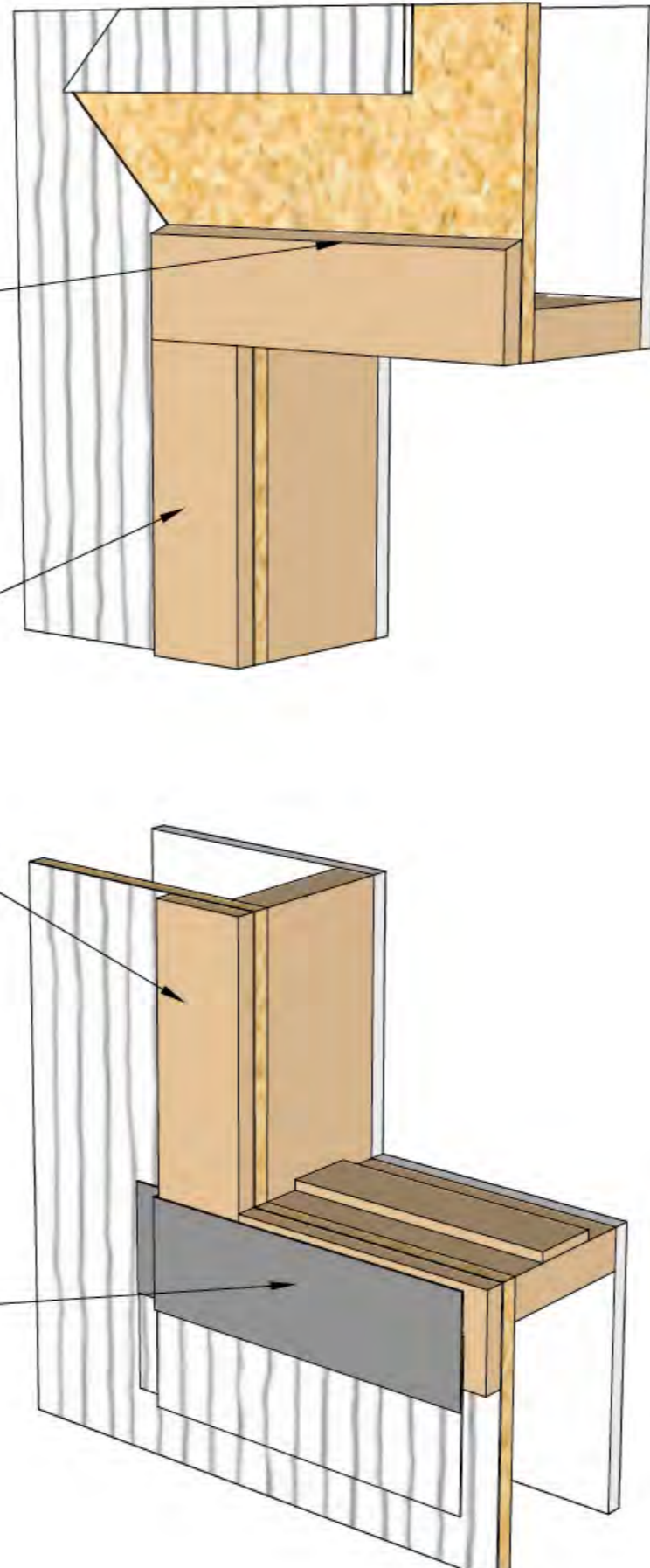
Residential Flanged Windows

Bucked-out

Bevel top edge of wood blocking

Line rough opening with wood blocking

Sheet WRB skirt at sill taped with self adhered membrane flashing



Residential Flanged Windows

Bucked-out

veek®
eWrap®

WWW.CONSTRUCTION.TYVEK.COM
the miracles of science™

USA



Call 1-800-44-TYVEK
DU PONT
WWW.CONSTRUCTION.TYVEK.COM

USA



Step 3

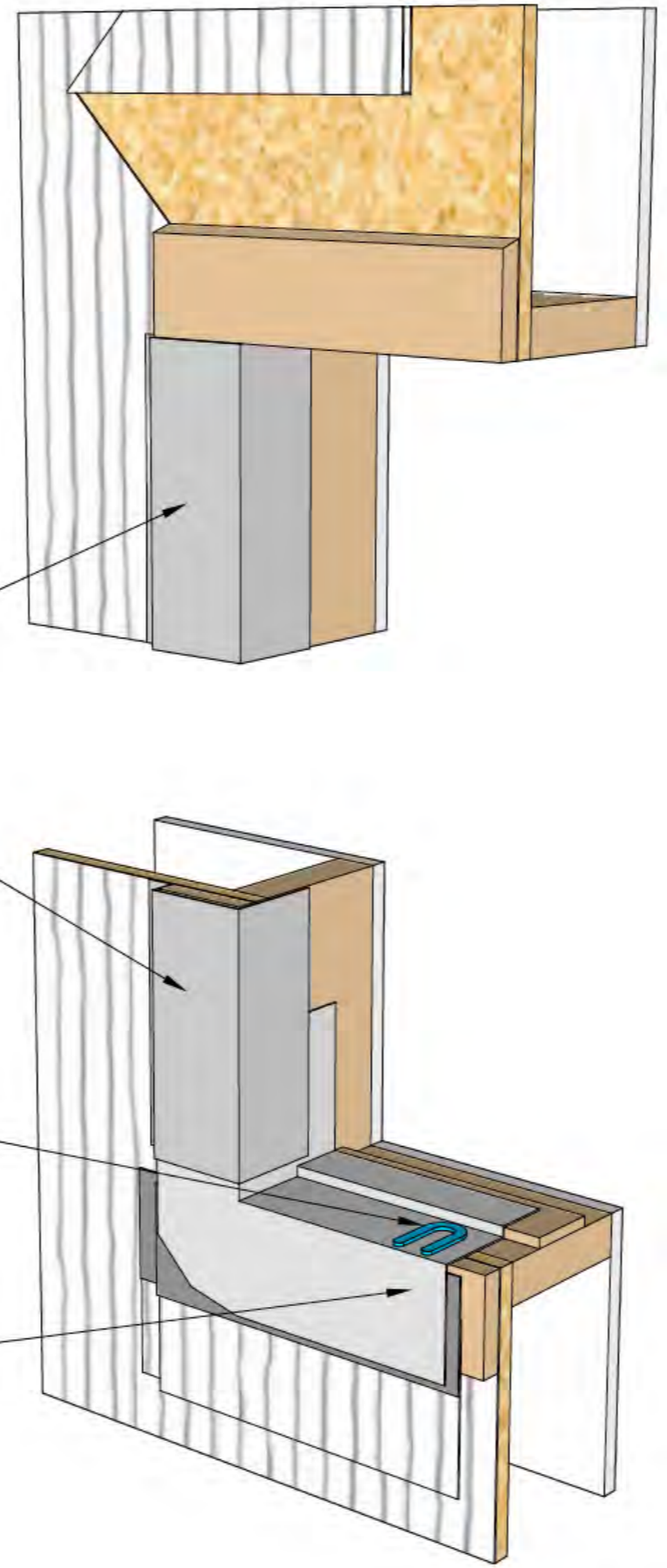
Residential Flanged Windows

Bucked-out

Install membrane flashing at
jamb. Seal from wall sheet
WRB and return into the
rough opening

Window shim. Recommend 1/8"
minimum.

Flexible membrane pan flashing
returned up back dam angle



Residential Flanged Windows

Bucked-out





Residential
Flanged
Windows

Bucked-out

Tyvek
HomeWrap

DU PONT

Tyvek
HomeWrap

Call 1-800-44-TYVEK WWW.CONSTRUCTION.TYVEK.COM

DU PONT The miracles of science™

USA

Made
in the
USA

Flex Tape

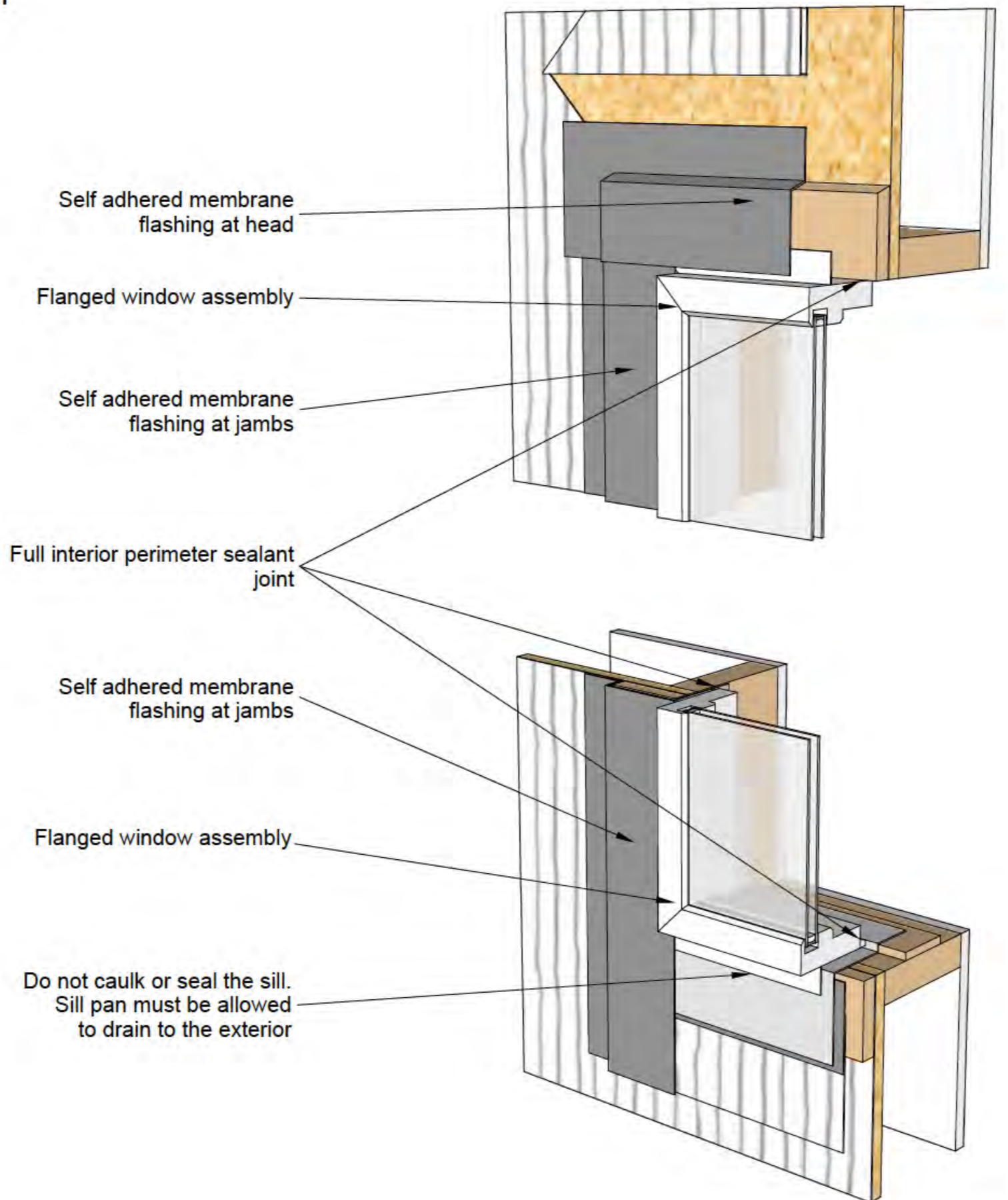


DU PONT

Tyvek

www.buildingscience.com

Step 4



Residential Flanged Windows

Bucked-out

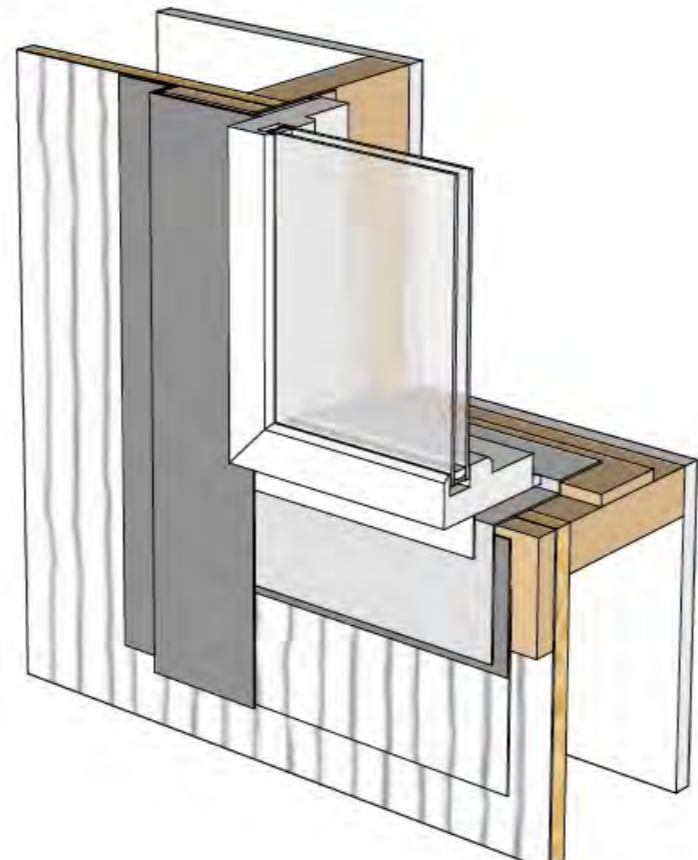
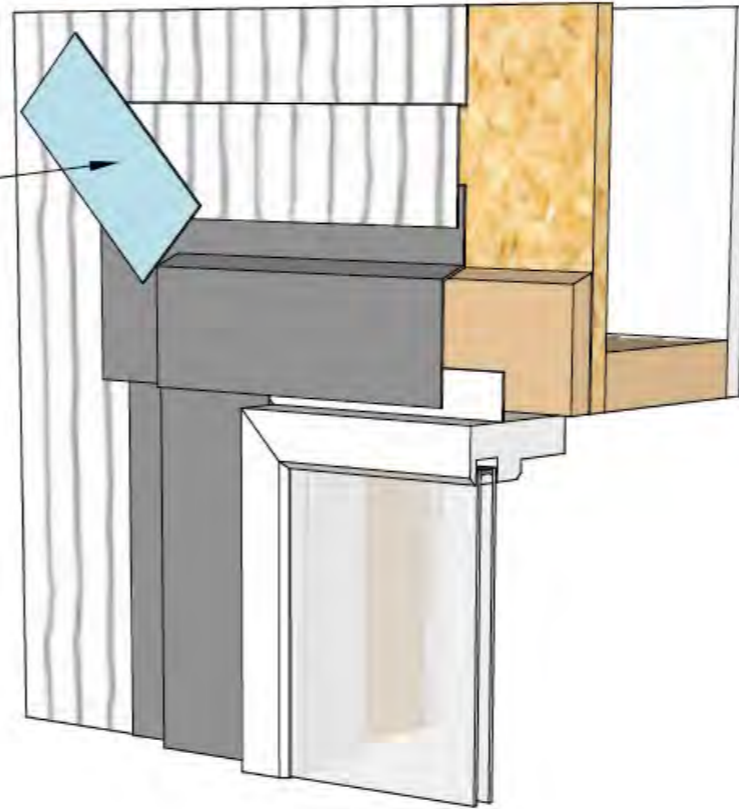
Residential Flanged Windows

Bucked-out



Step 5

Fold and tape WRB over self adhered membrane flashing at head



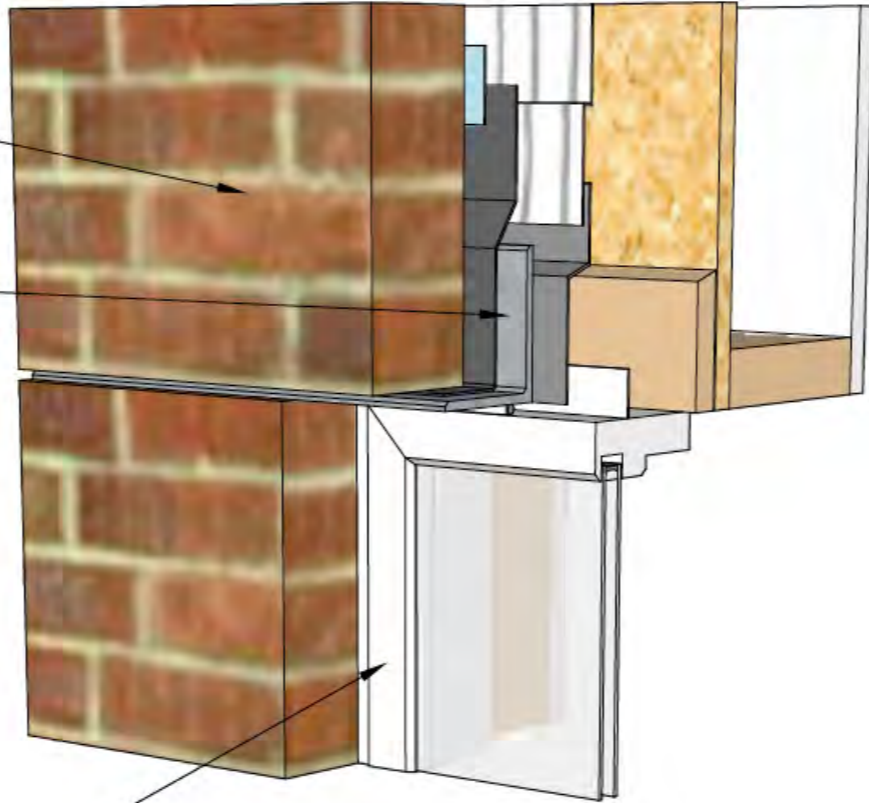
Residential Flanged Windows

Bucked-out

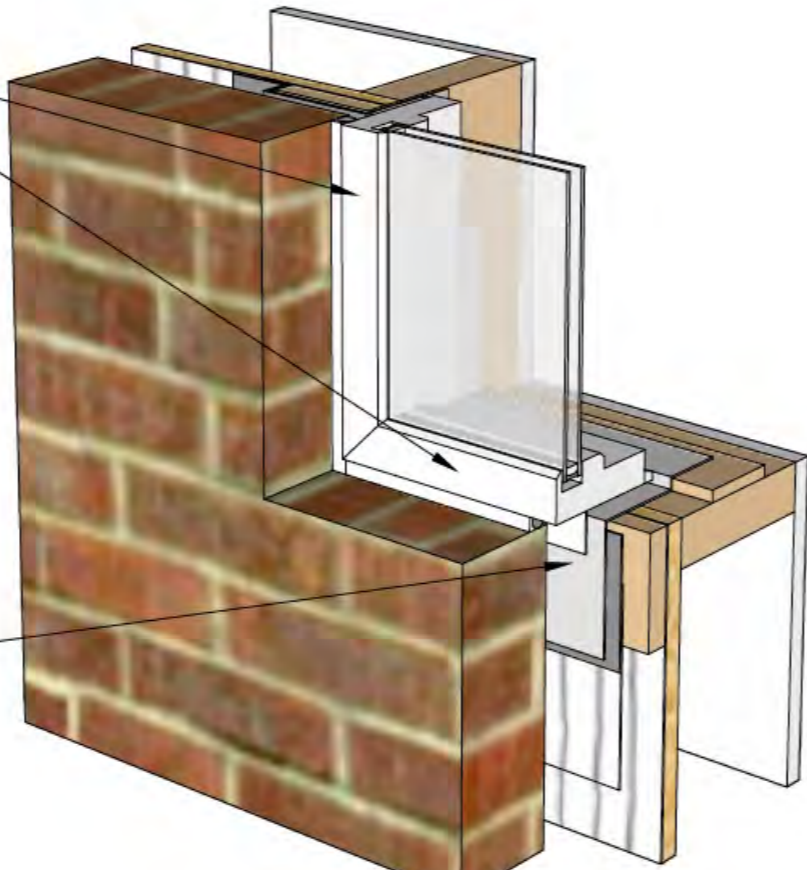
Masonry

masonry veneer

masonry lintel and membrane through wall flashing (taped top edge to wall WRB)



backer rod and sealant joint



window pan flashing drains into the masonry cavity

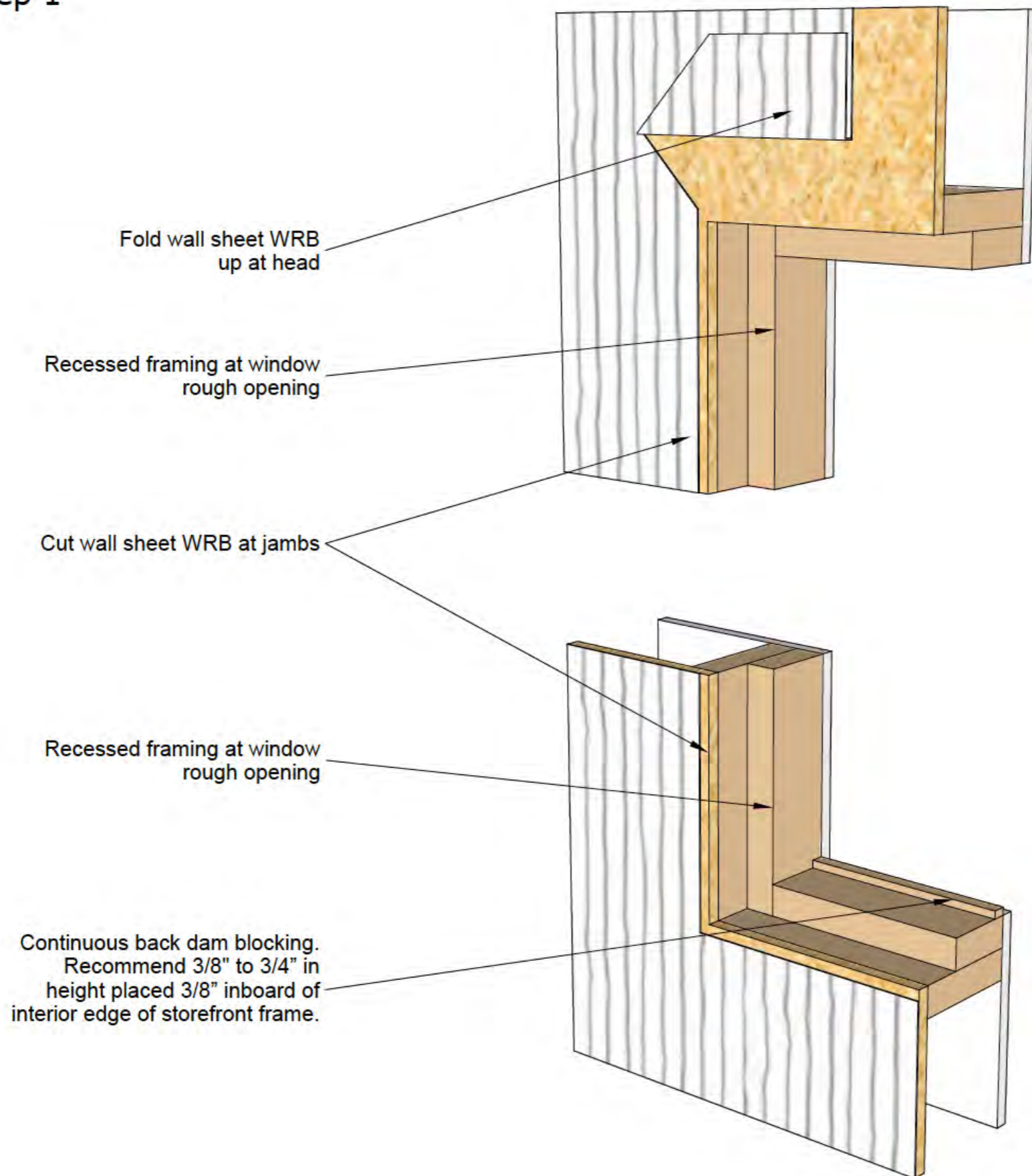
Residential Flanged Windows

Bucked-out

Step 1

Residential Flanged Windows

Recessed



Step 2

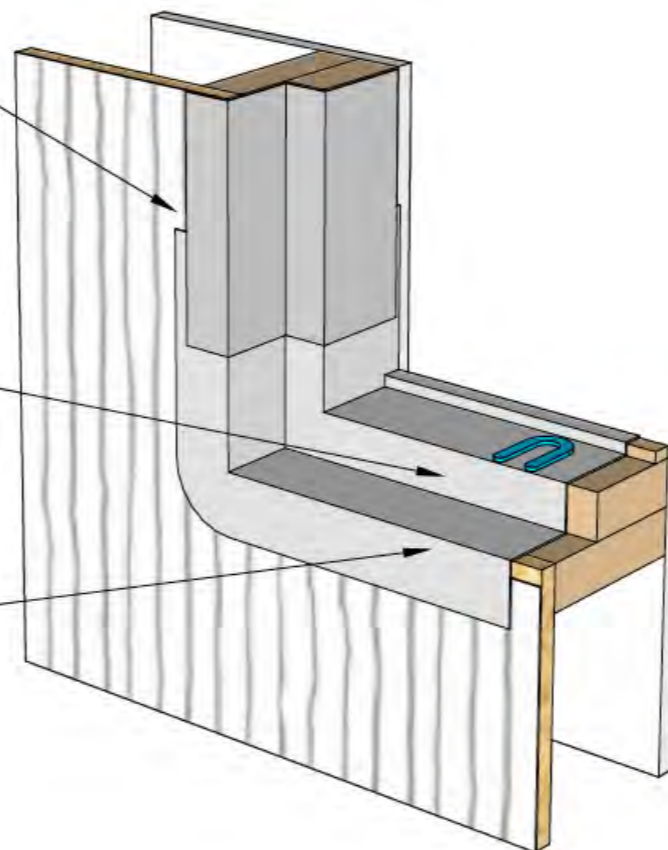
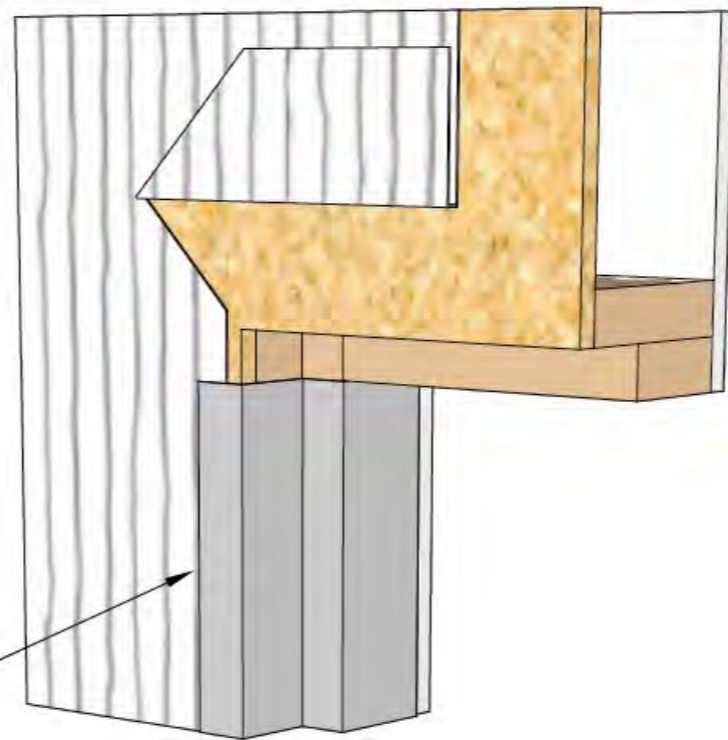
Residential Flanged Windows

Recessed

Install membrane flashing at
jamb. Seal from wall sheet
WRB and return into the
rough opening

Window shim. Recommend 1/8"
minimum.

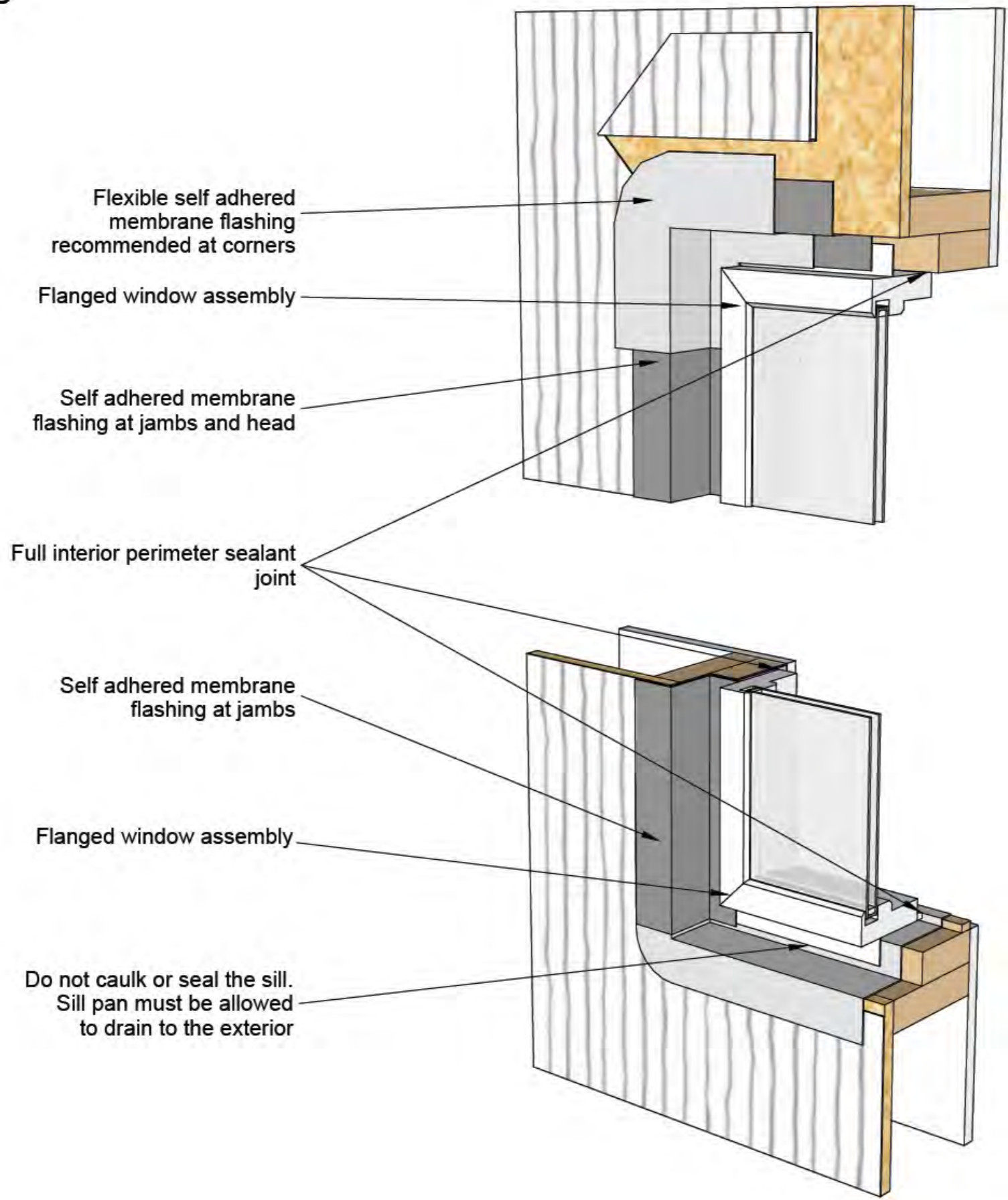
Flexible membrane pan flashing
returned up back dam angle



Step 3

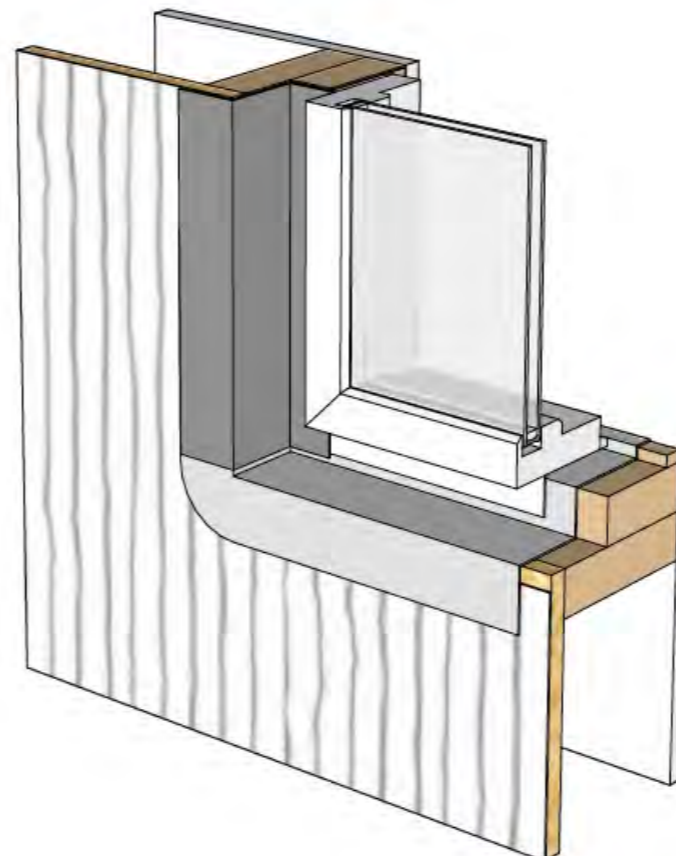
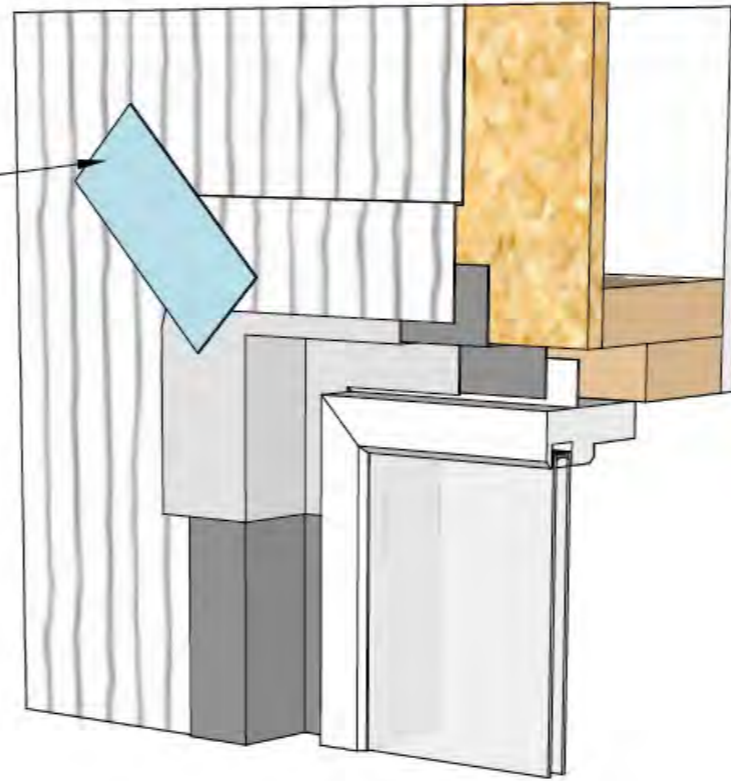
Residential Flanged Windows

Recessed



Step 4

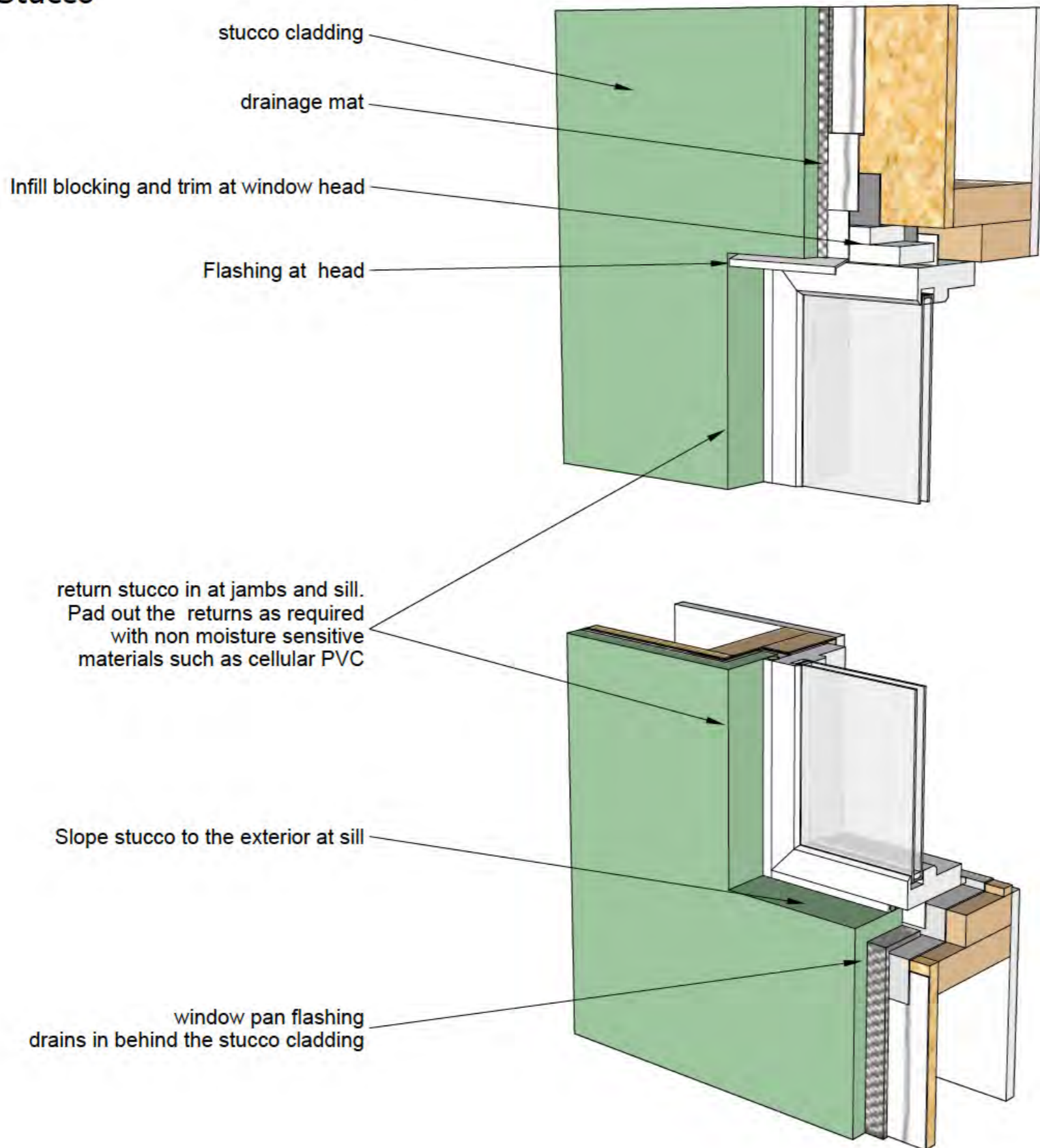
Fold and tape WRB over self adhered membrane flashing at head



Residential
Flanged
Windows

Recessed

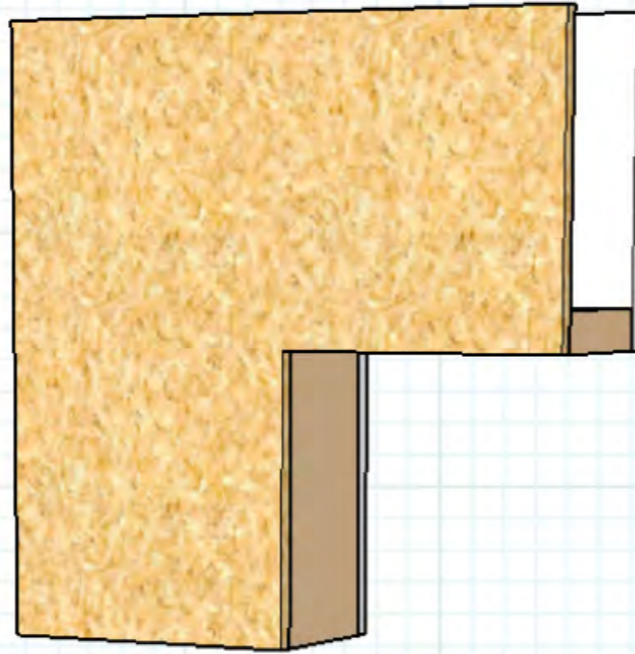
Stucco



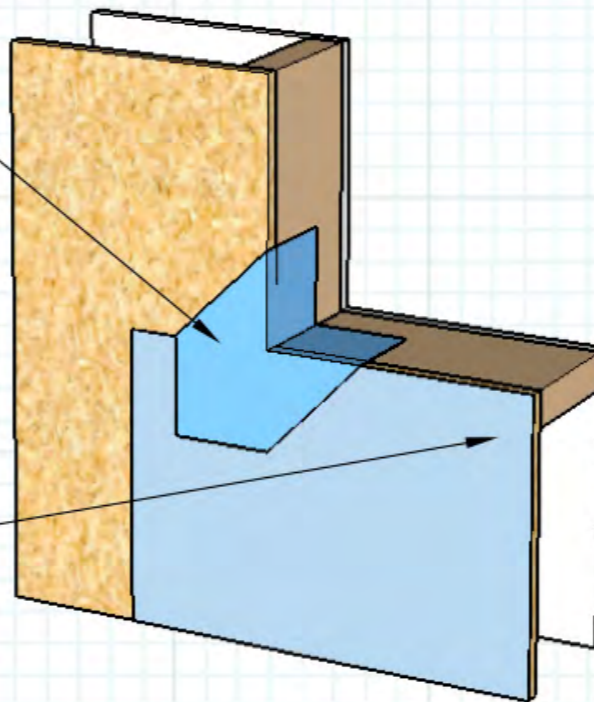
Residential Flanged Windows

Recessed

Step 1



Preformed Corner,
bed in sealant



Self-Adhered membrane "skirt".
Leave release liner on bottom
portion to facilitate shingle lap
with WRB

Residential Flanged Windows

California Style

Residential Flanged Windows

California Style

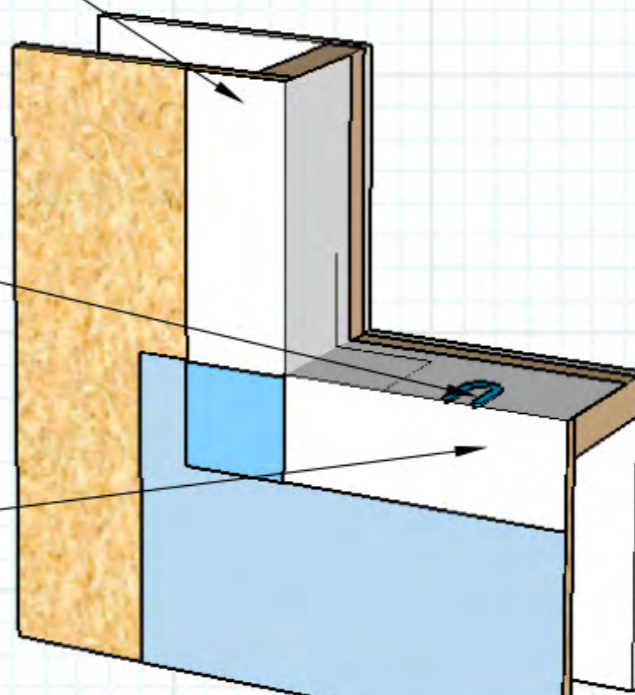
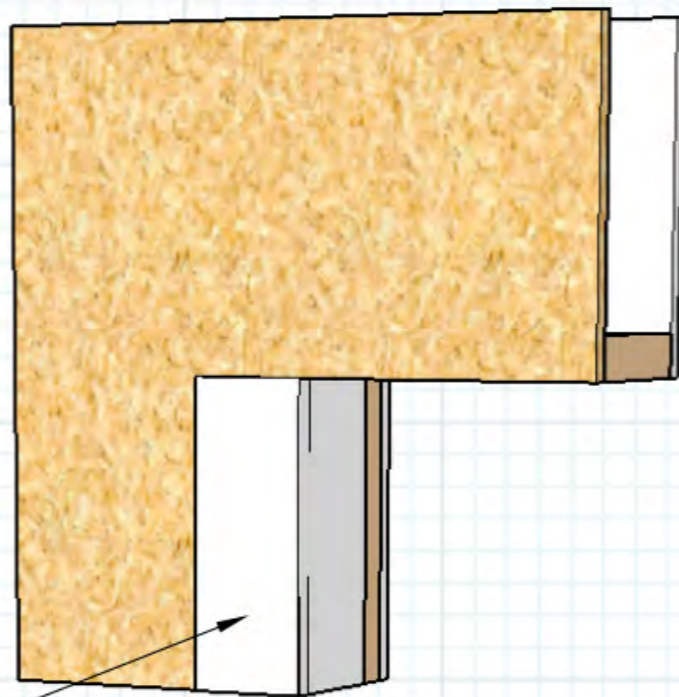
Residential Flanged Windows

California Style

Line jambs with self adhered membrane flashing, lapping over preformed corners

Window shim. Recommend 1/8" minimum.

Membrane pan flashing



Residential Flanged Windows

California Style

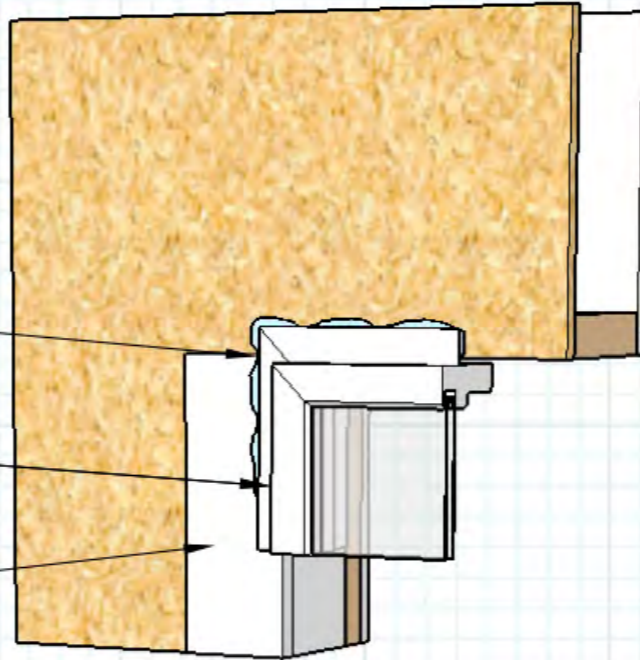


Step 3

Flange of window bed in sealant at head and jambs

Flanged window assembly

Self adhered membrane flashing at jambs

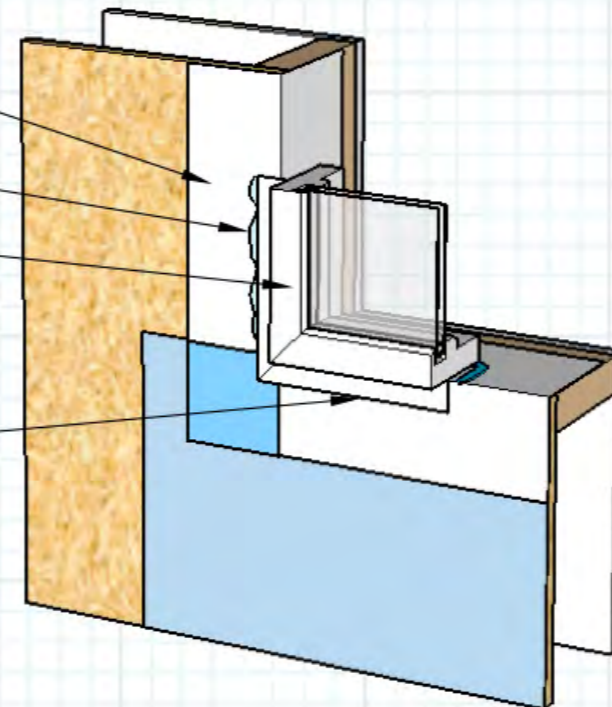


Self adhered membrane flashing at jambs

Flanged of window bed in sealant

Flanged window assembly

Do not caulk or seal the sill. Sill pan must be allowed to drain to the exterior



Residential Flanged Windows

California Style

Residential Flanged Windows

California Style



FortiFlash may
carry a 15-Year
Limited Warranty
(see website for
details and terms)



Made in USA

Installation
guide

ASTM E-2112

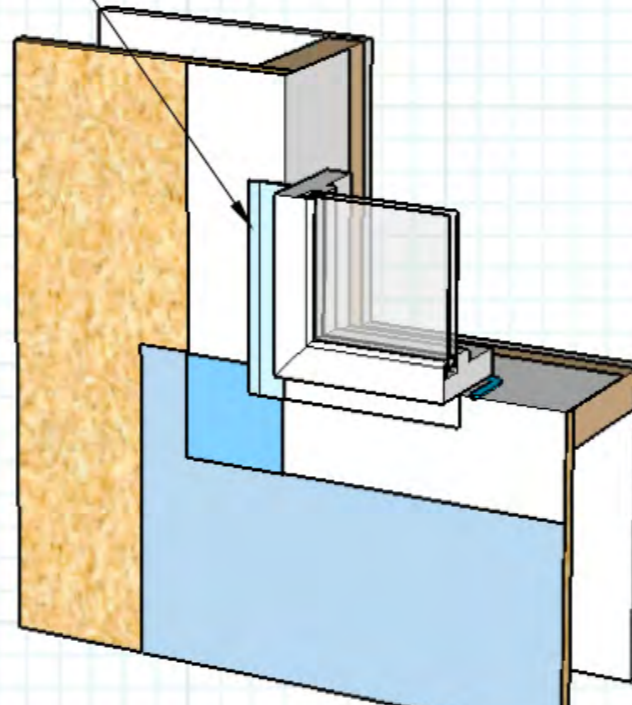
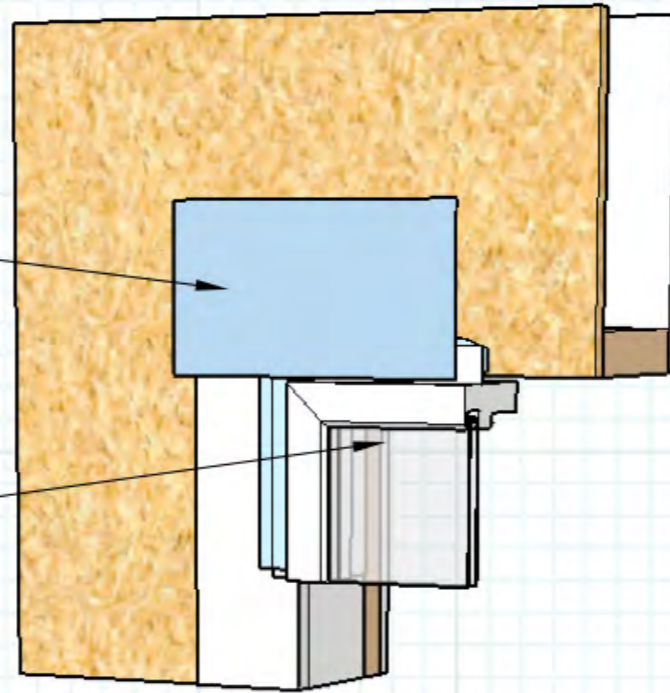
www.

Residential Flanged Windows

California Style

Apply membrane head
flashing, sealing flange to the
face of the sheathing

Apply additional sealant
over flange at jamb,
tool smooth



Residential Flanged Windows California Style

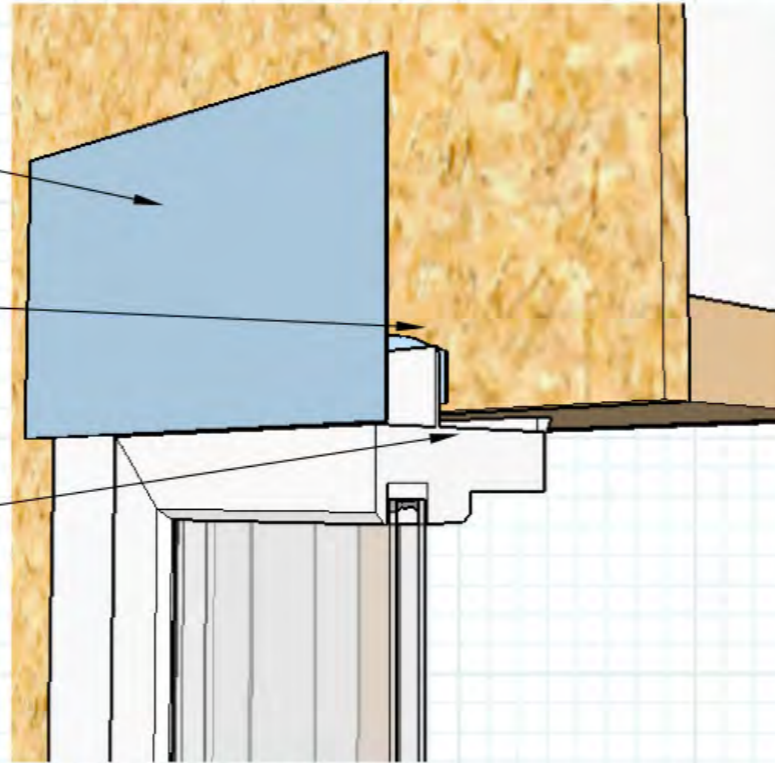


Step 5

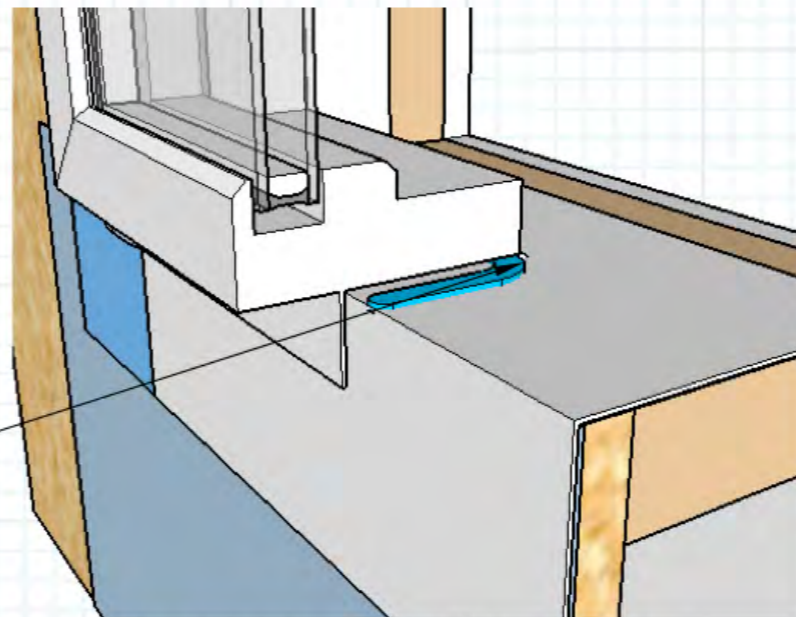
Membrane head flashing

Bedding joint of sealant behind flange

Full perimeter interior sealant joint;
use backer rod for joints
greater than 1/4 inch



Full perimeter interior sealant joint;
use backer rod for joints
greater than 1/4 inch



Residential Flanged Windows

California Style

Residential Flanged Windows

California Style

Non-flanged Windows

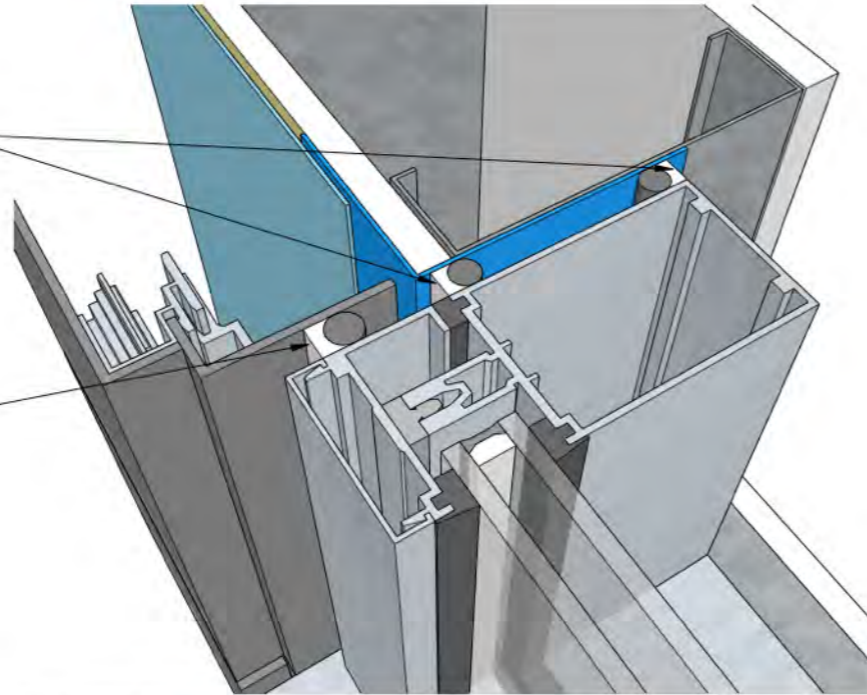


Non-flanged Windows

Jamb

Full interior and exterior backer rod and sealant joint between the window and the membrane lined rough opening

Exterior sealant beauty bead between composite metal cladding and window



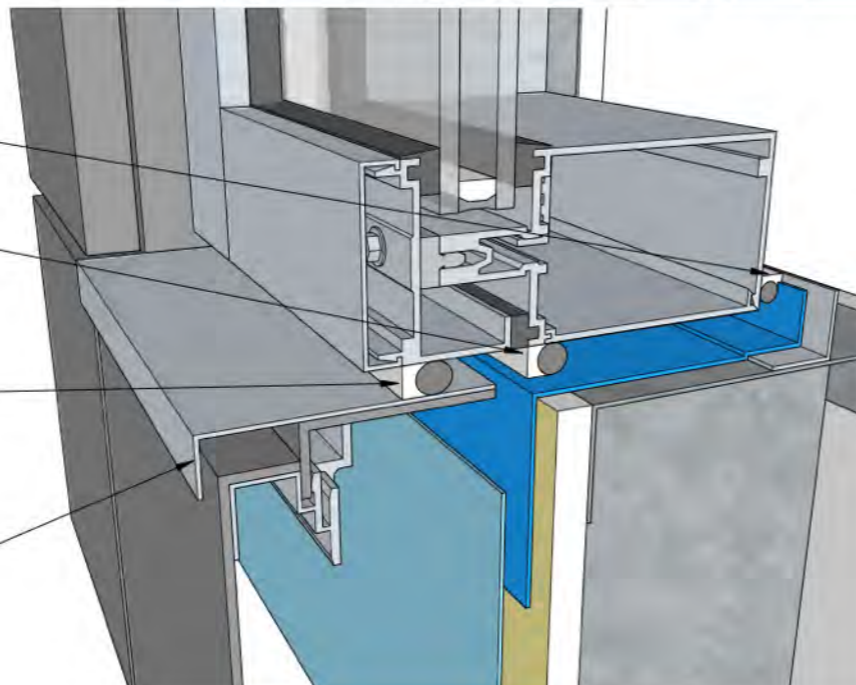
Sill

Full interior backer rod and sealant joint between the window and the membrane lined back dam angle

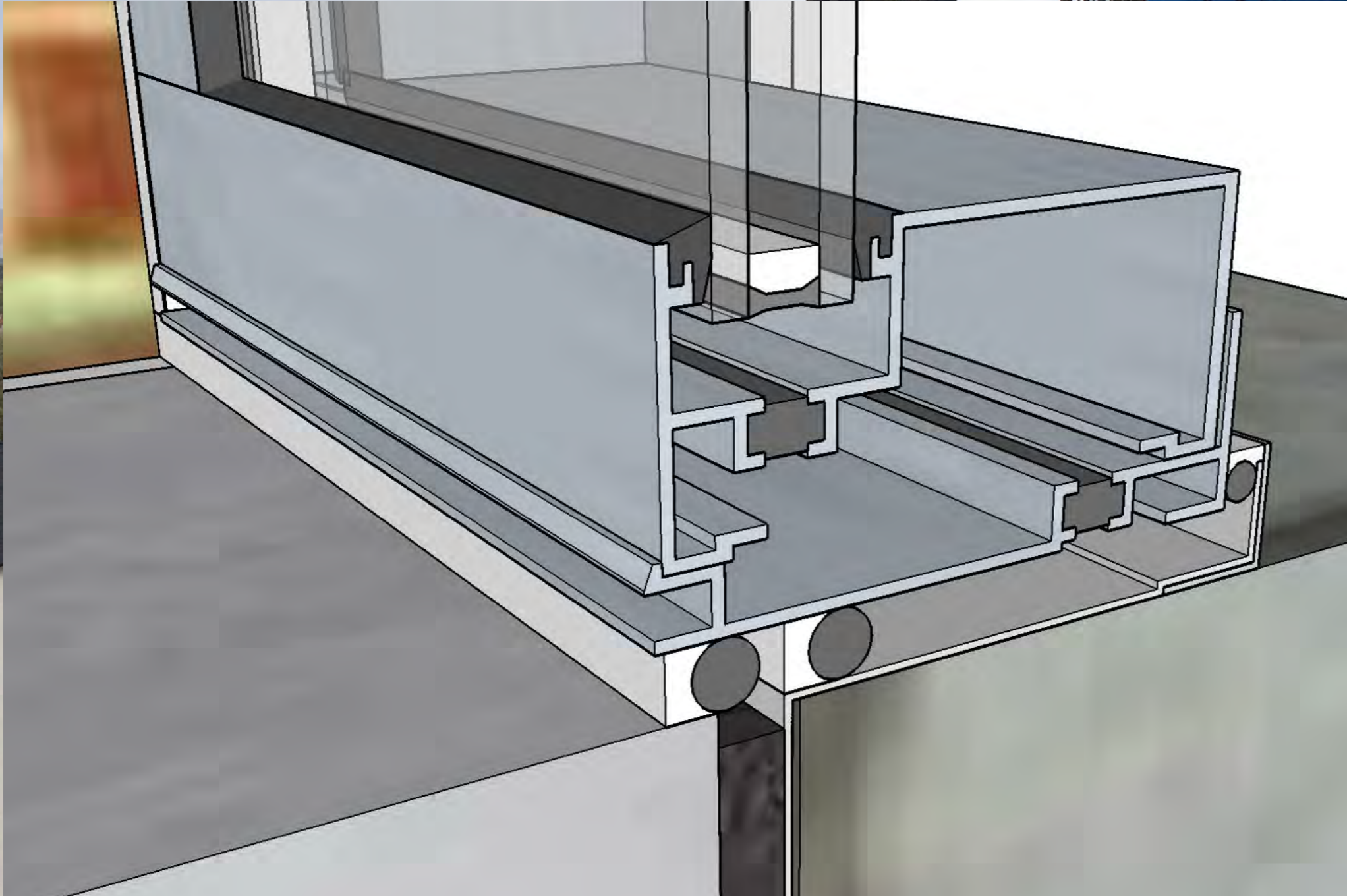
Full exterior backer rod and sealant joint between the window and the membrane lined rough opening

Exterior sealant beauty bead between composite metal cladding and window

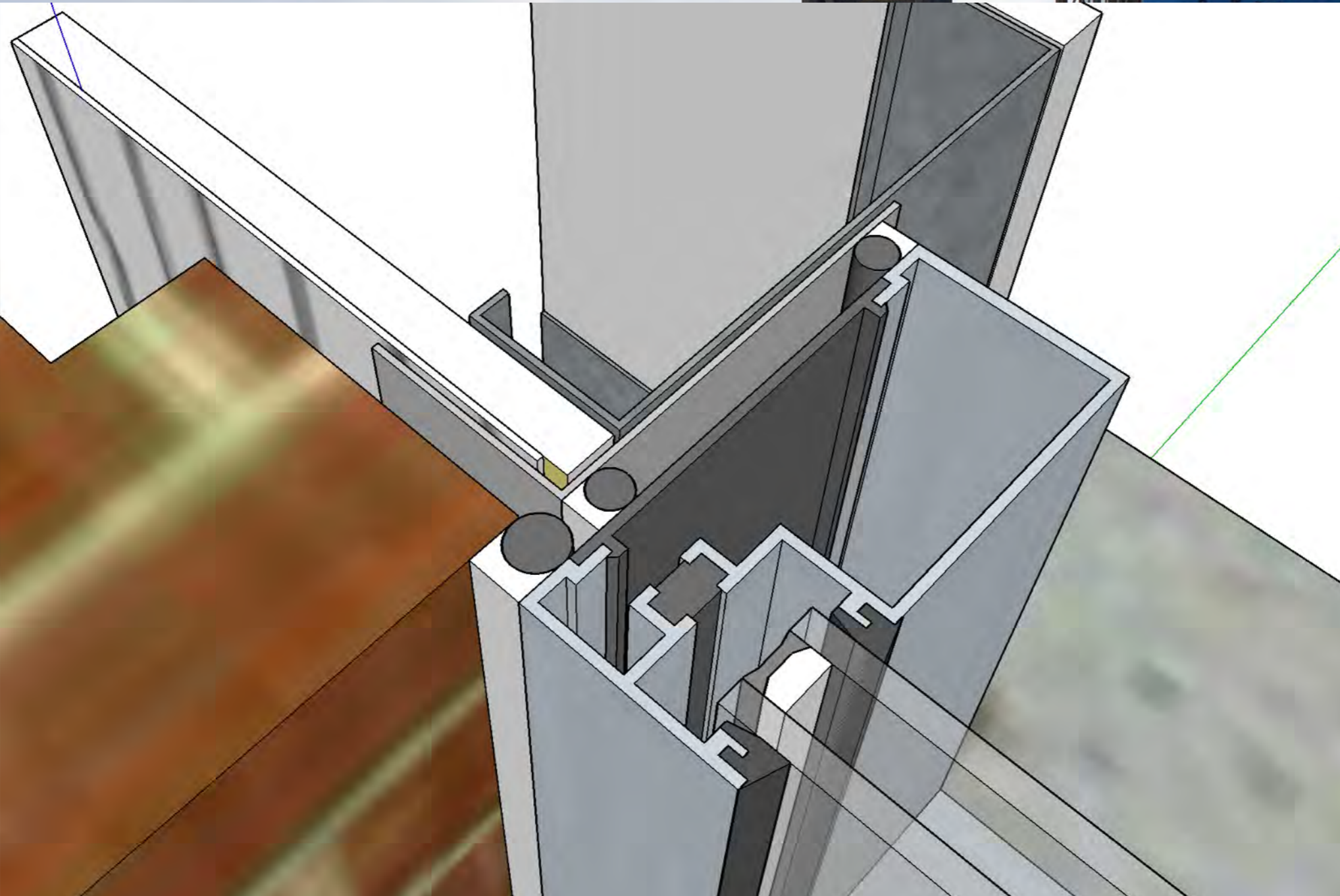
Optional metal sill flashing integrated with the composite metal cladding panel to reduce the potential for rainwater entry in behind the cladding assembly



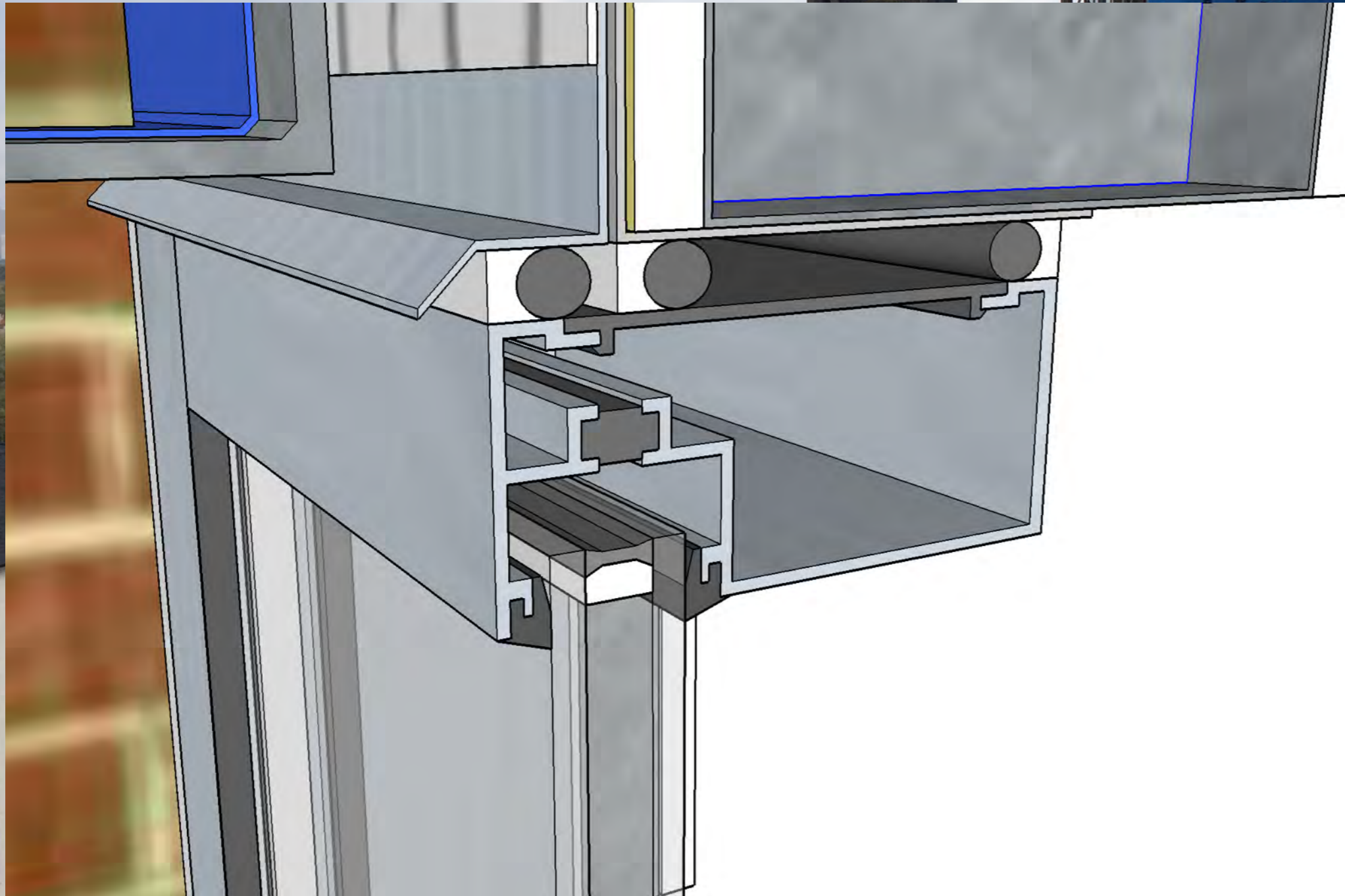
Non-flanged Windows



Non-flanged Windows



Non-flanged Windows



Non-flanged Windows



Non-flanged Windows

