

**BUILDINGENERGY BOSTON**

---

**Windows and Fenestration: Basics and Beyond**

Kohta Ueno (Building Science Corporation)  
Peter Baker (Building Science Corporation)

Curated by Christopher Nielson



---

**Northeast Sustainable Energy Association (NESEA)**  
March 29, 2023

1

Peter Baker & Kohta Ueno  
March 29, 2023

Windows and Fenestration:  
Basics and Beyond



MARCH 28-29, 2023 • WESTIN BOSTON SEAPORT DISTRICT • [NESEA.ORG/BE23](https://www.nesea.org/be23)  
Conference + Trade Show of the Northeast Sustainable Energy Association (NESEA)

2

## Course Description

---

Windows are a key part of the building enclosure, but they are also the costliest, most fragile, and worst thermally performing component. We will present on windows from our viewpoint as building enclosure consultants and forensic failure specialists. We will explore energy and comfort impacts of glazing and glazing ratios, and then move on to water control detailing and the window-to-wall interface. Covered topics will include sill pan and rough opening flashings, “innie” vs. “outie” windows in thick walls, two-stage joints and drainage, air barrier detailing, condensation problems, and window water leakage testing. We will also discuss storefront and curtain wall glazing systems and their associated detailing.

3

## Learning Objectives

---

At the end of this course, participants will be able to answer:

1. Weigh the energy impacts associated with glazing and glazing ratios.
2. Implement the concepts for sill pan designs and window-to-wall interface junctions.
3. Estimate the relative condensation risks associated with various window materials and designs.
4. Explain the water control and thermal detailing differences between storefront and curtain wall glazing.

4

## Housekeeping

---

- Slides will be available on website (<https://www.buildingscience.com/past-events>)
- Resources: list of links at end of presentation
- Questions—during plus reserved Q&A time at end

5

## Presentation Overview

---

- |   |   |
|---|---|
| <ul style="list-style-type: none"> <li>▪ Windows and Energy</li> <li>▪ Window Design and Detailing           <ul style="list-style-type: none"> <li>▪ General Concepts</li> <li>▪ Applied Concepts               <ul style="list-style-type: none"> <li>▪ Residential Windows</li> <li>▪ Commercial Windows</li> </ul> </li> </ul> </li> <li>▪ Window Energy Performance           <ul style="list-style-type: none"> <li>▪ Alignment with insulation</li> <li>▪ Condensation</li> <li>▪ Comfort</li> </ul> </li> </ul> | <ul style="list-style-type: none"> <li>▪ <b>NOT covering</b></li> <li>▪ Retrofits (renovation of existing windows, storm panels, etc.)</li> <li>▪ Skylights (windows that face the sky)</li> <li>▪ Unitized Curtain Walls</li> <li>▪ Window Air/Water Testing In Depth (only overview)</li> </ul> |
|---|---|

6

---

# Windows and Energy

NESEA BE23 - Windows and Fenestration: Basics and Beyond

7  
© buildingscience.com

7

## Windows/Fenestration

---

- Functions: Same as wall - *plus*
  - transparent and allow ventilation (possibly)
  - not easy, hence expensive and compromise
- Structure - transfer loads
- Rain control
- Heat control
- Airflow control – tight / ventilation
- Solar control – gain / reject

NESEA BE23 - Windows and Fenestration: Basics and Beyond

8  
© buildingscience.com

8

## “Window Make for Lousy Walls”

	Window	Wall	Ratio
<b>Conduction:</b> $Q_c = U \Delta T$	<b>U=0.33 / R3</b>	<b>U=0.05 / R20</b>	
$T_{in}=70\text{ F}$ $T_{out}=10\text{ F}$	$Q_c = 20\text{ Btu/sf/hr}$	$Q_c = 3\text{ Btu/sf/hr}$	<b>6.6</b>
<b>Solar:</b> $Q_s = SHGC I$	<b>SHGC=0.60</b>	<b>SHGC=0.015</b>	
$I_s = 250\text{ Btu/sf/hr}$ (bright sun)	$Q_s = 150\text{ Btu/sf/hr}$	$Q_s = 3.5\text{ Btu/sf/hr}$	<b>42</b>
Alternate: solar control glazing	SHGC=0.3 $Q_s = 75\text{ Btu/sf/hr}$	U=0.125 / R8 $Q_c = 7.5$	10

NESEA BE23 - Windows and Fenestration: Basics and Beyond

© buildingscience.com <sup>9</sup>

9

## So Of Course, We Usually Build These...



NESEA BE23 - Windows and Fenestration: Basics and Beyond

© buildingscience.com <sup>10</sup>

10

## So Of Course, We Usually Build These...



NESEA BE23 - Windows and Fenestration: Basics and Beyond

11  
© buildingscience.com

11

## Performance Issues and Metrics

- **Primary Metrics**
  - Heat Loss / Gain (R-value, U-factor)
  - Solar Heat Gain Coefficient (SHGC)
  - Visual Transmittance (VT)
- **Other Important**
  - Condensation resistance (CRI/CR)
  - Air Leakage (AL)
  - Water penetration ( $\Delta P$  rating)
  - Impact and Blast

NESEA BE23 - Windows and Fenestration: Basics and Beyond

12  
© buildingscience.com

12

## How Much Glass?



Building Science 2008

NESEA BE23 - Windows and Fenestration: Basics and Beyond

© buildingscience.com 13

13

## Daylighting

- Natural light can offset artificial lights
- Natural light almost always preferred
- BUT,
  - Must use daylight *controls* and sensors to capture energy savings
  - Need to control glare and solar heating caused by too much glass on sunny days
  - Cooling costs often overwhelm lighting savings
  - Over 60% WWR → glare problems



NESEA BE23 - Windows and Fenestration: Basics and Beyond

© buildingscience.com 14

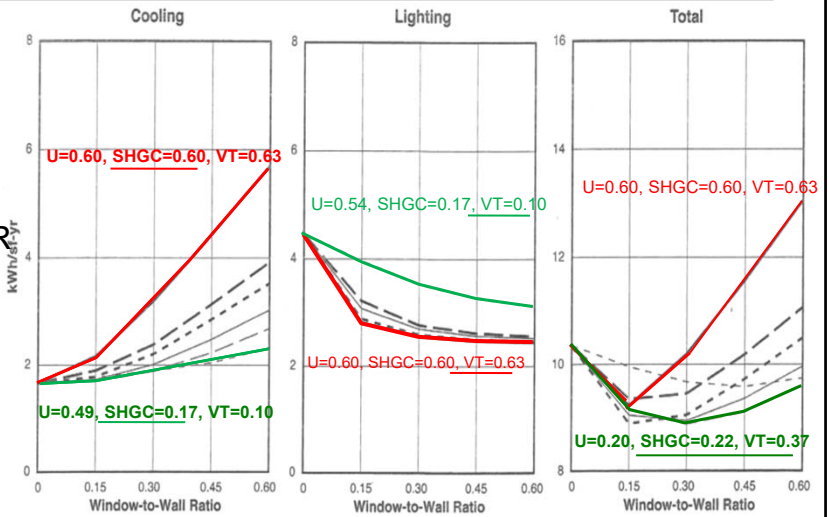
14



## Balance Cooling & Lighting

Chicago Illinois Office Building 15 ft (4.6 m perimeter zone)

- Cooling load vs. WWR
- Lighting load vs. WWR
- Combine cooling + lighting loads
  - Minima at 15-30% WWR
- Quantity is not quality!



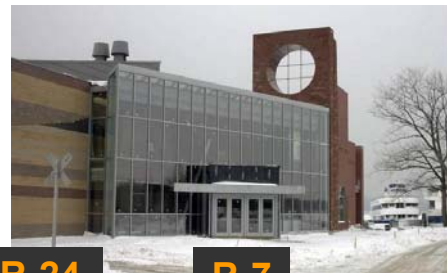
15

NESEA BE23 - Windows and Fenestration: Basics and Beyond

15  
© buildingscience.com

15

## Overall R-Values



Spandrels—high R-values defeated by frame thermal bridging

R-24

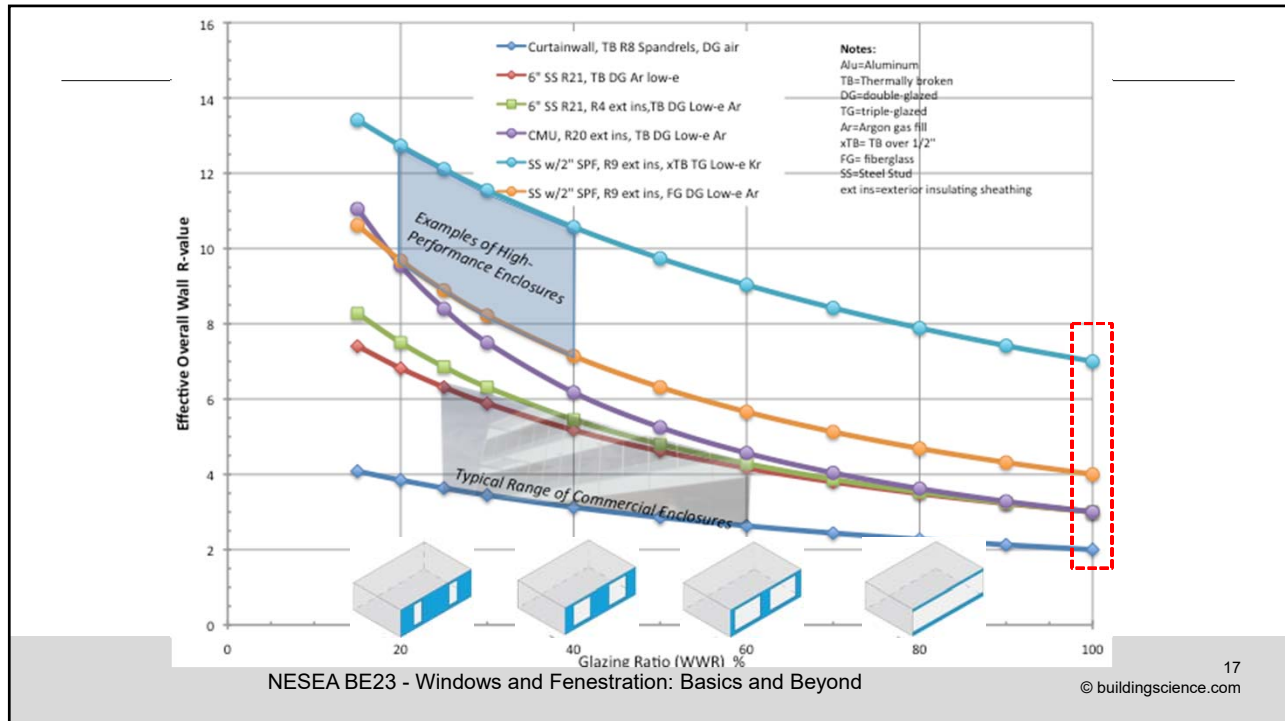
R-7

NESEA BE23 - Windows and Fenestration: Basics and Beyond

16  
© buildingscience.com

16

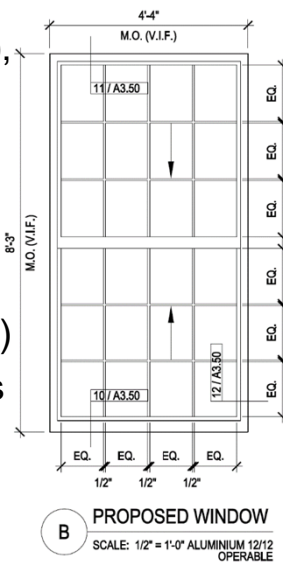




17

## Window Heat Loss in Context (Masonry Mills)

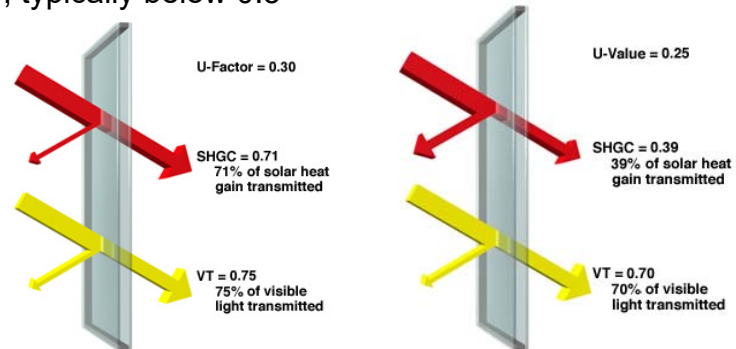
- Large windows (4' x 8'), high glass %
- Can't change frame profile (historic)
- Aluminum, double, low E:  $U \approx 0.5$  (center of glass U-0.30)
- R-2 holes in R-20 walls
- "Two faucets"



18

## Solar Heat Gain

- Glazing ratio dominates size of AC equipment and ducts
- Solar Heat Gain Coefficient: SHGC
  - Ratio of solar gain on window that enters room as heat
  - Lower controls better; typically below 0.5

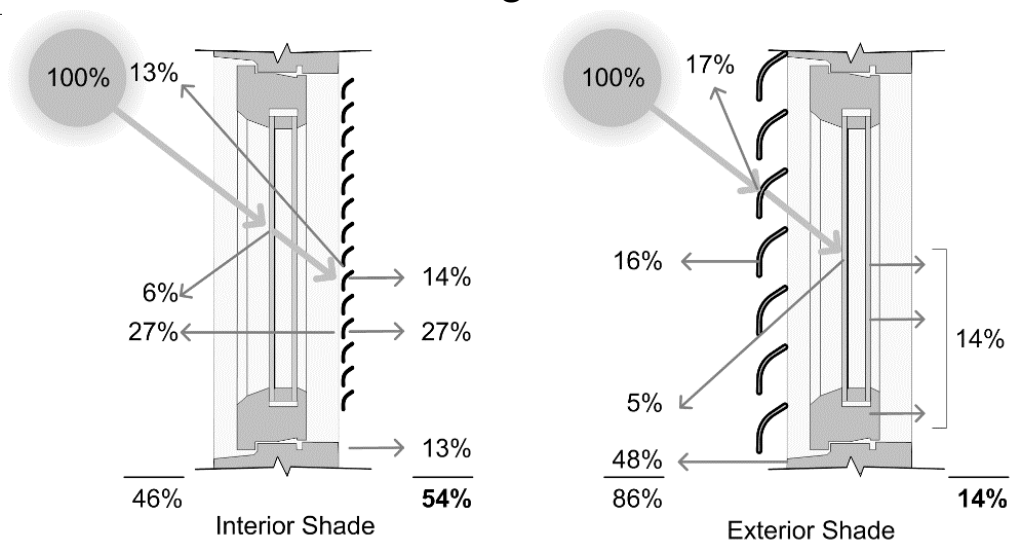


NESEA BE23 - Windows and Fenestration: Basics and Beyond

19  
© buildingscience.com

19

## Interior vs. Exterior Shading



NESEA BE23 - Windows and Fenestration: Basics and Beyond

20  
© buildingscience.com

20

## Low Energy-Use All-Glass Box? (UW Solar Decathlon)



- Operable exterior shading to control solar heat gain

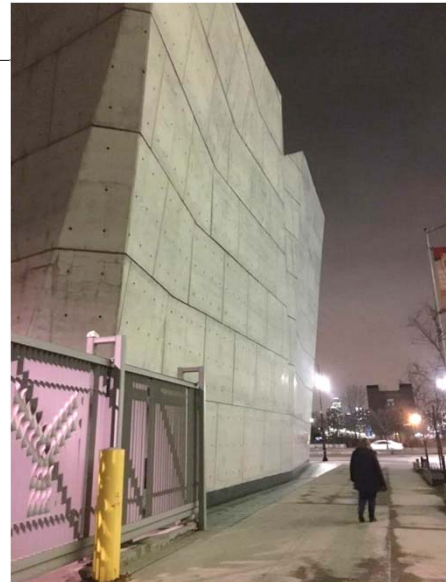
NESEA BE23 - Windows and Fenestration: Basics and Beyond

© buildingscience.com

21

## Windows and Energy

- “Engineers want architects to build windowless bunkers.”
- Glazing ratios have consequences
- Bacon triple cheeseburgers
- Triple/quad glazing as “tax” on large amounts of glazing?
- Vacuum insulated glazing can’t get here soon enough...



NESEA BE23 - Windows and Fenestration: Basics and Beyond

22  
© buildingscience.com

22

# Window Design and Detailing

NESEA BE23 - Windows and Fenestration: Basics and Beyond

23  
© buildingscience.com

23

## Windows Leakage & Damage

- “All windows leak...”



NESEA BE23 - Windows and Fenestration: Basics and Beyond

24  
© buildingscience.com

24

## Windows Design and Detailing

---

- Exposure and loads
- Building/Window Type
- Enclosure Design
  - Water management of elements and systems
  - Window Water Management
    - The window product
    - The window interface
- Construction Sequence

25

## Window Design - General Concepts

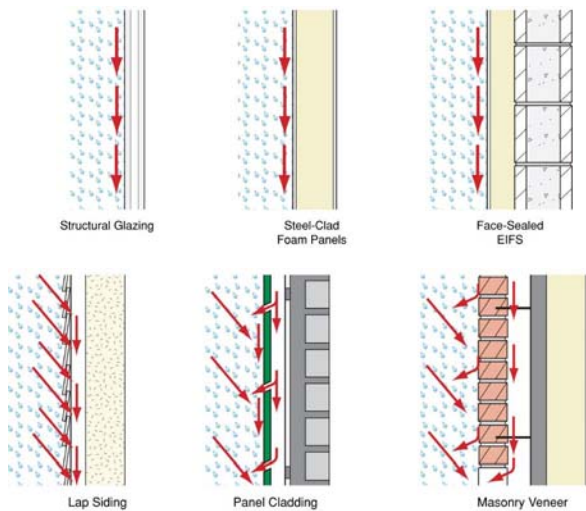
---

- Barrier vs. Drained
- Two-stage joints
- Three-stage joints
- Pressure moderation

26



## Barrier vs. Drained



### Barrier

- All of the water is controlled on the outer surface
- No provision to manage water that gets past the outer layer
- The continuity of the outer surface must be "perfect"

### Drained

- Most of the water is controlled on the outer surface
- Secondary drainage is provided behind the outer layer
- The outer surface can have "holes" (both intentional and unintentional)

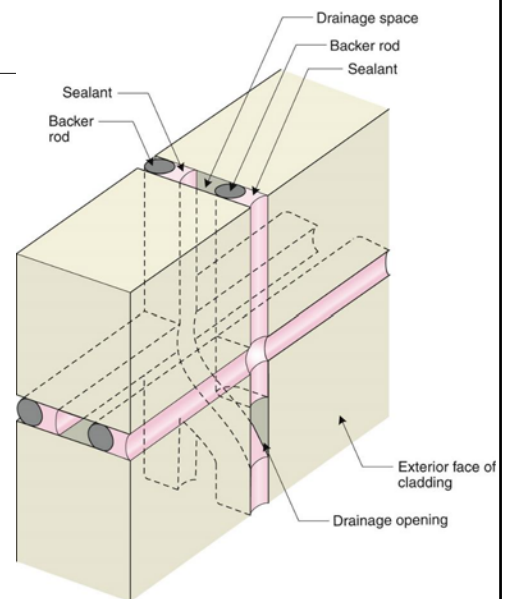
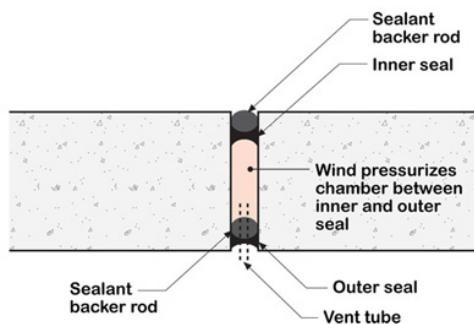
NESEA BE23 - Windows and Fenestration: Basics and Beyond

27  
© buildingscience.com

27

## Two-Stage Joints (Precast)

- Interior needs to be the airtight layer; outer joint is weeped



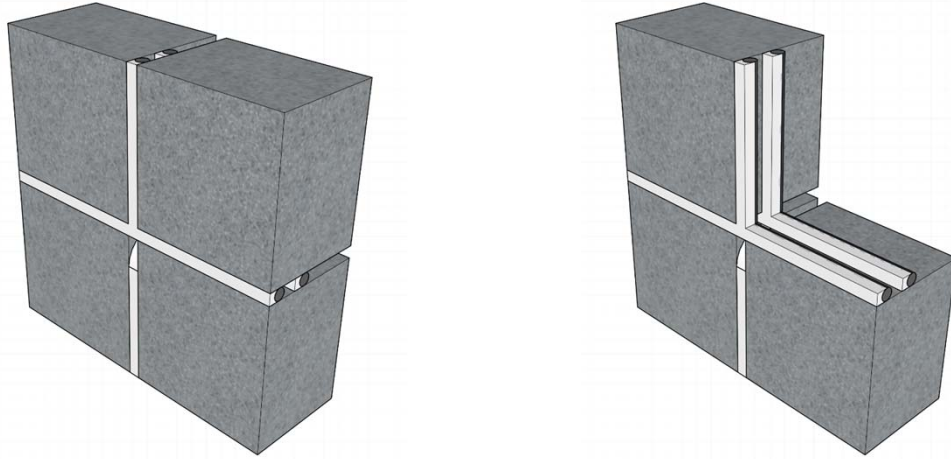
NESEA BE23 - Windows and Fenestration: Basics and Beyond

28  
© buildingscience.com

28



## Two-Stage Joints

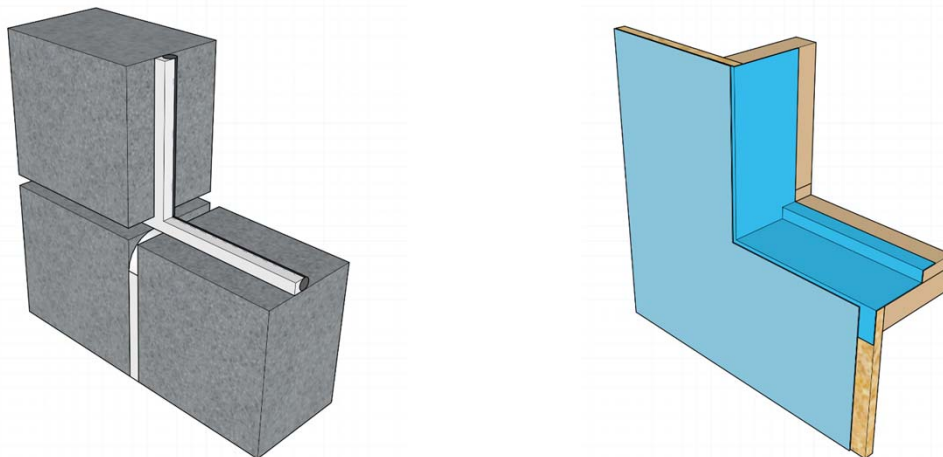


NESEA BE23 - Windows and Fenestration: Basics and Beyond

29  
© buildingscience.com

29

## Two-Stage Joints

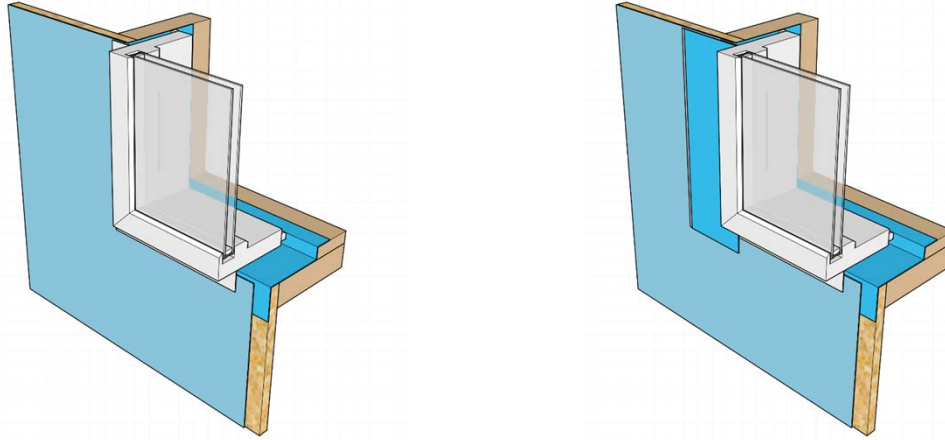


NESEA BE23 - Windows and Fenestration: Basics and Beyond

30  
© buildingscience.com

30

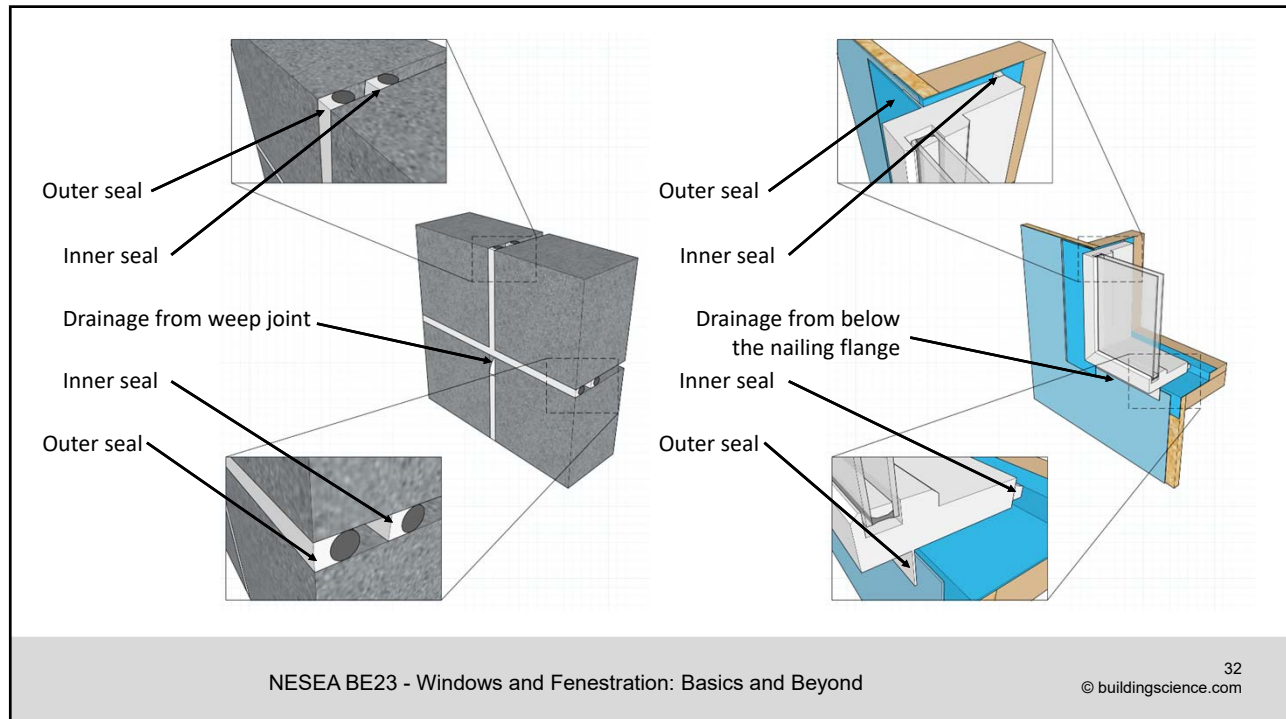
# Two-Stage Joints



NESEA BE23 - Windows and Fenestration: Basics and Beyond

31  
© buildingscience.com

31



NESEA BE23 - Windows and Fenestration: Basics and Beyond

32  
© buildingscience.com

32

## Three-Stage Joints

- This might not actually be a thing\*
- Concept is to provide protection over the more critical seals and water control layers
- Load reduction (water, wind, UV)
  - Prolonged service life
  - Reduced risk

\* OK, it is a “thing”, but it might not be called the “thing” I just called it, but it falls very nicely in the order of “things” for this presentation.

NESEA BE23 - Windows and Fenestration: Basics and Beyond

33  
© buildingscience.com

33

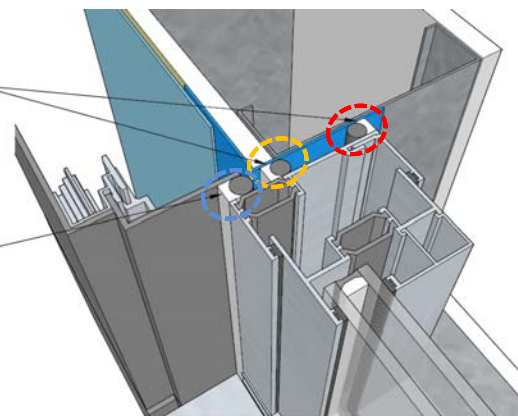
## Three-Stage Joints

- Seal window to rough opening water control layers and cladding
- **Air seal**, **weather seal**, and **rain screen seal**

Jamb

Full interior and exterior backer rod and sealant joint between the window and the membrane lined rough opening

Exterior sealant beauty bead between composite metal cladding and window



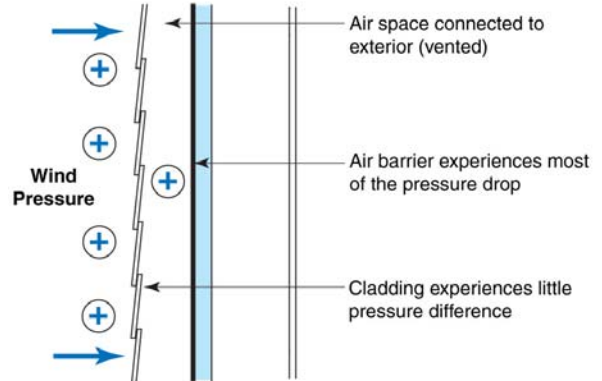
NESEA BE23 - Windows and Fenestration: Basics and Beyond

34  
© buildingscience.com

34

## Pressure Moderation

- Sometimes called “Pressure Equalization”
- Increased pressure drop over interior seals, reduces pressure on exterior elements
- Reduced pressure on exterior elements, reduces the risk of water leakage through those elements

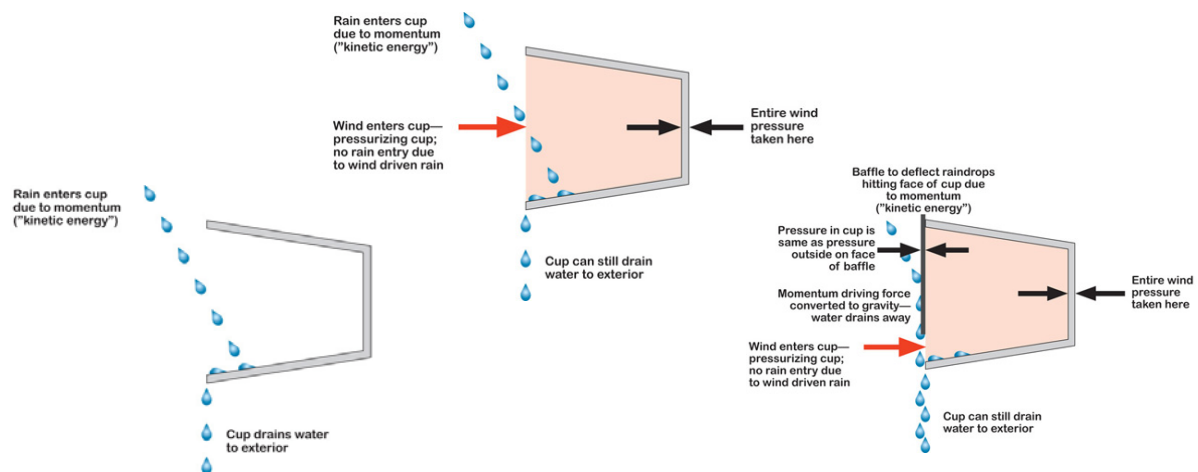


NESEA BE23 - Windows and Fenestration: Basics and Beyond

35  
© buildingscience.com

35

## Pressure Moderation – “Cup in the wind”

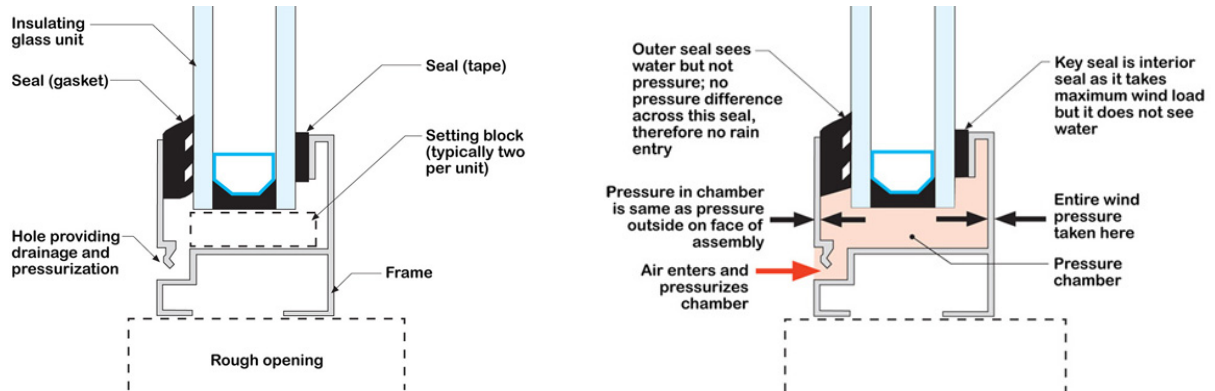


NESEA BE23 - Windows and Fenestration: Basics and Beyond

36  
© buildingscience.com

36

## Pressure Moderation



NESEA BE23 - Windows and Fenestration: Basics and Beyond

37  
© buildingscience.com

37

## Window Design – Applied Concepts

- Residential Windows
- Commercial Windows
  - Storefront
  - AW Window/Window Wall
  - Curtain Wall\*

\* Unitized curtain walls are not included in this presentation

NESEA BE23 - Windows and Fenestration: Basics and Beyond

38  
© buildingscience.com

38

## Residential Windows

- Performance ratings are described under the ***North American Fenestration Standard/Specification for windows, doors, and skylights AAMA/WDMA/CSA 101/I.S.2/A440***
- Flanged windows are most common for new residential wood frame construction, though non-flanged window products are used
- Considerations:
  - The flange is typically used as part of the water control
  - Watch out for discontinuous flanges at the corner
  - The window flange dictates the position of the window in the wall

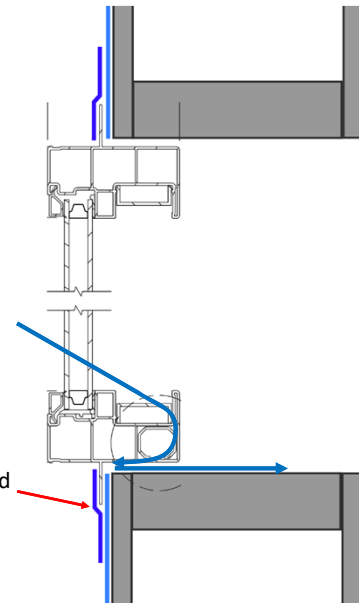
39

## Residential Windows

- 4-sided sealing



No drainage –  
water is directed  
to the interior

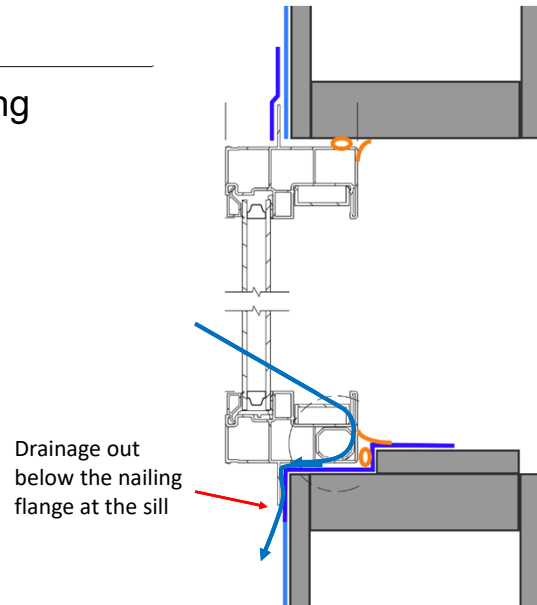


40



## Residential Windows

- 3-sided sealing with a pan flashing

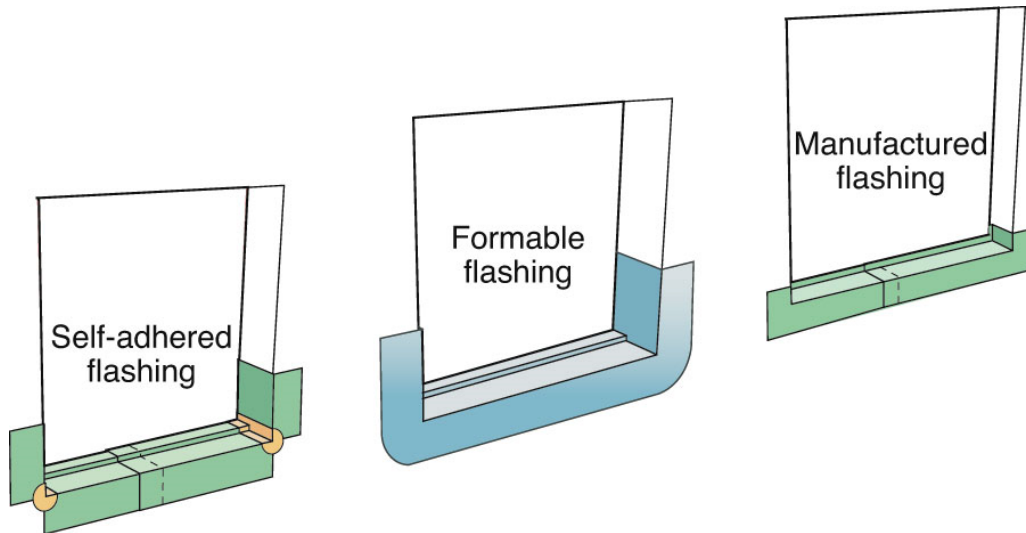


NESEA BE23 - Windows and Fenestration: Basics and Beyond

41  
© buildingscience.com

41

## Sill Pan Flashings



NESEA BE23 - Windows and Fenestration: Basics and Beyond

42  
© buildingscience.com

42



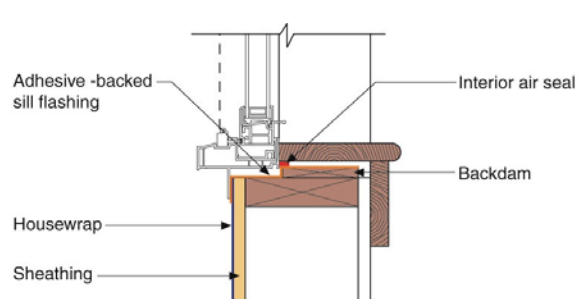
NESEA BE23 - Windows and Fenestration: Basics and Beyond

43  
© buildingscience.com

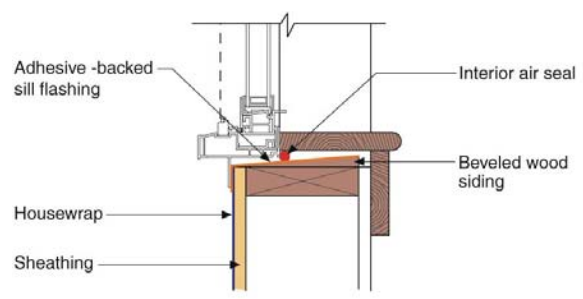
43

## Backdams and Sloped Sills

- Prevents inward water entry from sill pan
- Left open at bottom to allow for drainage



A strip of wood nailed at the back of the rough opening sill forms a dam to prevent water from draining into the interior.



A piece of wood bevel siding nailed over the sill to create positive drainage toward the exterior is even better. Note that the rough opening needs to be enlarged to account for this and tapered shims in the opposite direction of the slope may be required.

NESEA BE23 - Windows and Fenestration: Basics and Beyond

44  
© buildingscience.com

44

## Flush Installation

Line jambs with 6" wide self adhered membrane flashing. Position membrane to extend into the rough opening past the innermost edge of the window frame and to lap a minimum of 2" onto the face of the WRB

Extend flexible membrane pan flashing up the jambs a minimum of 6"

Terminate self adhered membrane flashing 2" up from from the sill

Window shim. Recommend 1/8" minimum

6" wide flexible membrane pan flashing returned up onto the back dam blocking and lap 2" down over the face of the WRB

Tape cuts in sheet WRB with WRB construction tape\*

Fold and tape WRB over self adhered membrane flashing at head with WRB construction tape. Recommend to leave a 2" gap at each end\*

\* WRB manufacturers may require full taping of the sheet WRB with self adhered membrane flashing depending on building type and height. Use of manufacturers details are recommended to be followed to maintain desired system warranties

NESEA BE23 - Windows and Fenestration: Basics and Beyond

45  
© buildingscience.com

45

## Recessed Installation

Line jambs with self adhered membrane flashing. Membrane flashing must extend in past the innermost edge of the window frame

Extend flexible membrane pan flashing up the jambs a minimum of 6"

Terminate self adhered membrane flashing 2" up from from the sill

Flexible membrane pan flashing returned up and over back dam blocking

Window shim. Recommend 1/8" minimum

Tape cuts in sheet WRB with WRB construction tape\*

Fold and tape WRB over self adhered membrane flashing at head with WRB construction tape. Recommend to leave a 2" gap at each end\*

\* WRB manufacturers may require full taping of the sheet WRB with self adhered membrane flashing depending on building type and height. Use of manufacturers details are recommended to be followed to maintain desired system warranties

NESEA BE23 - Windows and Fenestration: Basics and Beyond

46  
© buildingscience.com

46

## Blocked-Out Installation

The diagrams illustrate the installation of a window in a blocked-out condition. The top row shows the initial membrane placement and the application of WRB construction tape. The bottom row shows the final assembly with pan flashing and a window shim.

**Line jambs with 6" wide self adhered membrane flashing. Position membrane to extend into the rough opening past the innermost edge of the window frame and cover the face of the buck.**

**Extend flexible membrane pan flashing up the jambs a minimum of 6"**

**Terminate self adhered membrane flashing 2" up from from the sill**

**Window shim. Recommend 1/8" minimum**

**6" wide flexible membrane pan flashing returned up onto the back-dam blocking and lap 2" down over the face of the buck**

**Tape cuts in sheet WRB with WRB construction tape\***

**Fold and tape WRB over self adhered membrane flashing at head with WRB construction tape. Recommend to leave a 2" gap at each end\***

**Head flashing taped to sheet WRB with 4" wide self adhered membrane flashing. Recommended for all panel claddings, as well as all vertically mullied windows\***

\* WRB manufacturers may require full taping of the sheet WRB with self adhered membrane flashing depending on building type and height. Use of manufacturers details are recommended to be followed to maintain desired system warranties

NESEA BE23 - Windows and Fenestration: Basics and Beyond 47  
© buildingscience.com

47

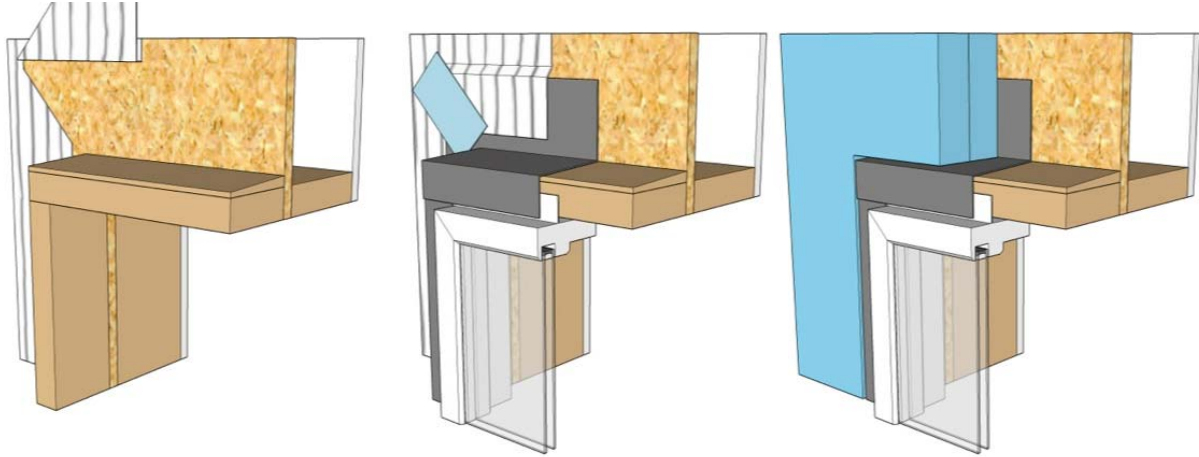
## WRB location with respect to the window location

The diagrams show six different configurations of WRB membrane installation around a window frame, illustrating how the membrane is positioned relative to the window's location and the surrounding structure.

NESEA BE23 - Windows and Fenestration: Basics and Beyond 48  
© buildingscience.com

48

## Blocked out window with exterior insulation



NESEA BE23 - Windows and Fenestration: Basics and Beyond

49  
© buildingscience.com

49

## Mock-Up Installation



NESEA BE23 - Windows and Fenestration: Basics and Beyond

50  
© buildingscience.com

50

## Mock-Up Installation



NESEA BE23 - Windows and Fenestration: Basics and Beyond

51  
© buildingscience.com

51

## In-Situ Performance Testing

- Field verification performance testing is commonly covered under ***AAMA 502 – Voluntary Specification for Field Testing of Newly Installed Fenestration Products***
- Test Methods:
  - ASTM E783 for air leakage
  - ASTM E1105 Method B for water infiltration
- Testing is related back to the laboratory tests that are used to determine the Performance Grade of the window - but are de-rated to account for field conditions
  - Acceptable air leakage rates are 1.5 times the laboratory rates
  - Water infiltration test pressure is 0.667 times the laboratory test pressure

NESEA BE23 - Windows and Fenestration: Basics and Beyond

52  
© buildingscience.com

52



## AAMA 502 Water Testing

- Specialized equipment that is calibrated to deliver a specific flow rate of water
- Specialized contractors
- Typical for new construction QC testing



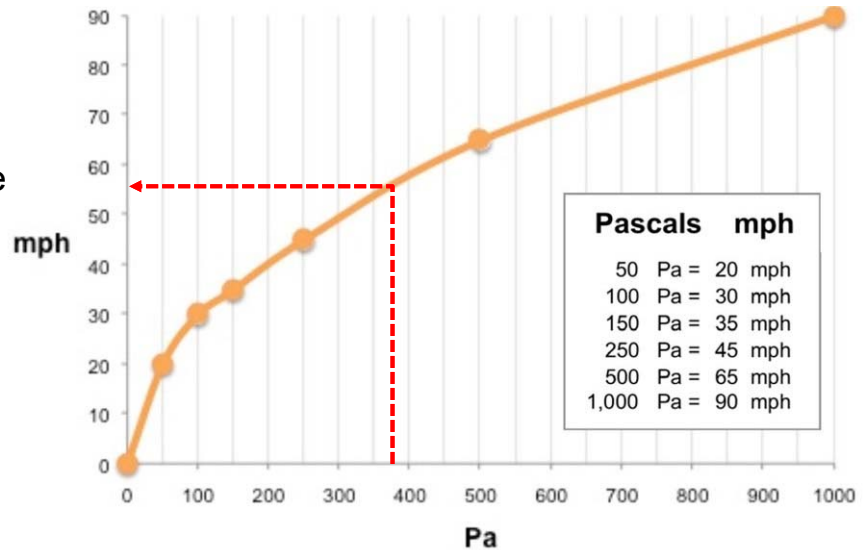
NESEA BE23 - Windows and Fenestration: Basics and Beyond

53  
© buildingscience.com

53

## Wind Speed vs. Stagnation Pressure

- 8 PSF window test = 383 Pa = 55 mph
- Rain + continuous 55 mph = hurricane
- Leaky buildings often leak without  $\Delta P$



NESEA BE23 - Windows and Fenestration: Basics and Beyond

54  
© buildingscience.com

54

## Simple Water Testing (Diagnostics)



NESEA BE23 - Windows and Fenestration: Basics and Beyond

55  
© buildingscience.com

55

## Simple Water Testing (Diagnostics)



Cobalt Chloride Paper Strips

NESEA BE23 - Windows and Fenestration: Basics and Beyond

56  
© buildingscience.com

56

## Commercial Windows

- Commonly fabricated out of aluminum
- Frames require a thermal break to achieve even some degree of energy efficiency
- Common products would be classified as:
  - Storefront
  - AW windows/Window Wall
  - Curtain Wall
- Each product type manages water in a different manner

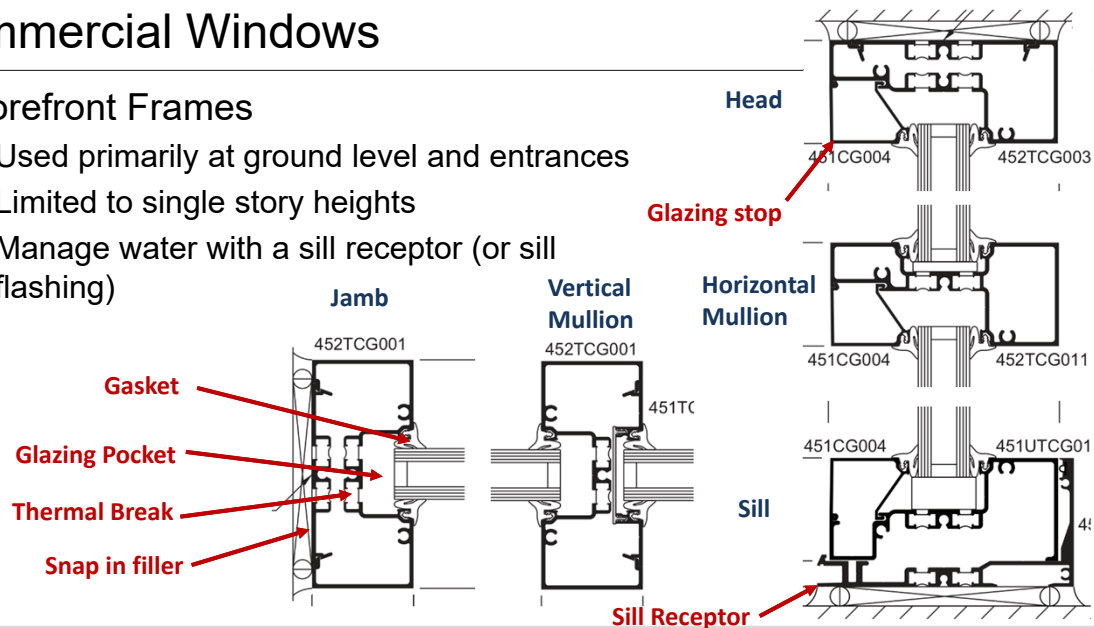
NESEA BE23 - Windows and Fenestration: Basics and Beyond

57  
© buildingscience.com

57

## Commercial Windows

- Storefront Frames
  - Used primarily at ground level and entrances
  - Limited to single story heights
  - Manage water with a sill receptor (or sill flashing)

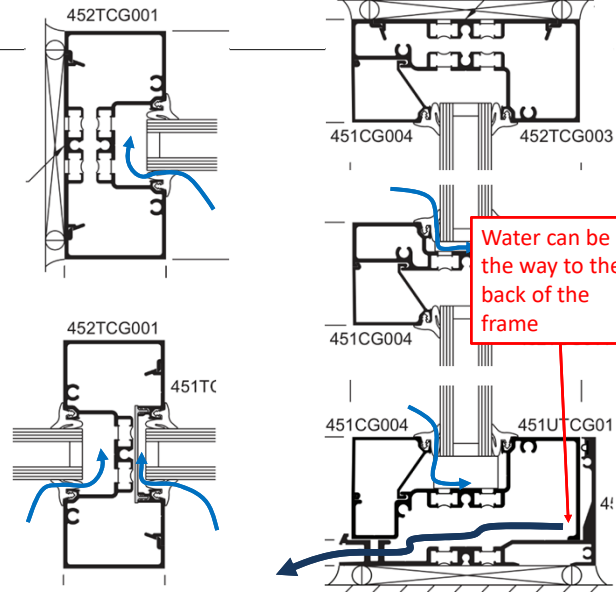
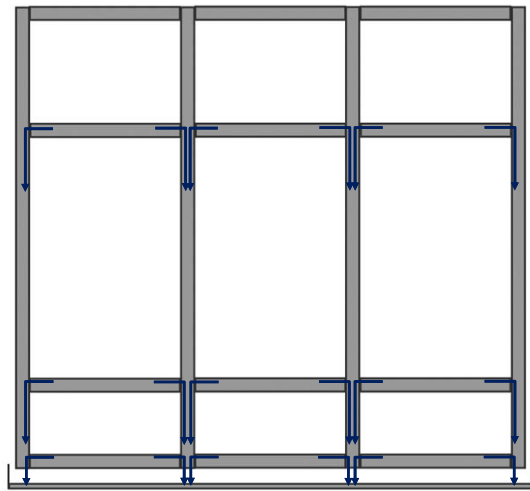


NESEA BE23 - Windows and Fenestration: Basics and Beyond

58  
© buildingscience.com

58

## Storefront



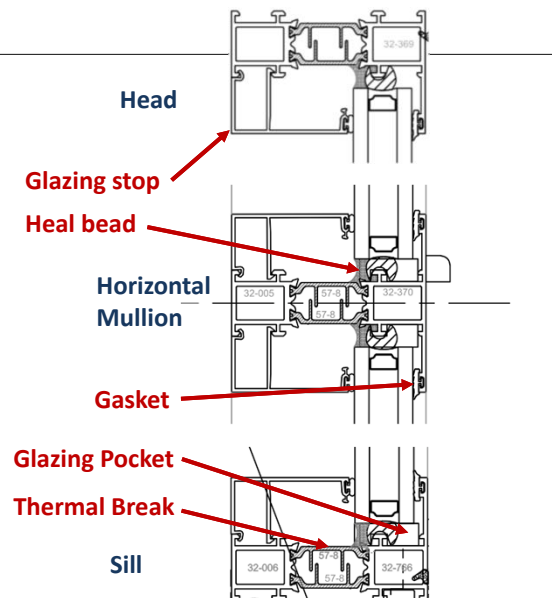
NESEA BE23 - Windows and Fenestration: Basics and Beyond

59  
© buildingscience.com

59

## Commercial Windows

- AW Windows/Window Wall
  - Common glazing for mid-rise to high-rise buildings
  - Used for:
    - Punched windows
    - Ribbon windows
    - Full height slab to slab windows
  - Manage water through both direct drainage of the glazing pocket as well as a sill receiver
  - Limited to single story (floor to floor)

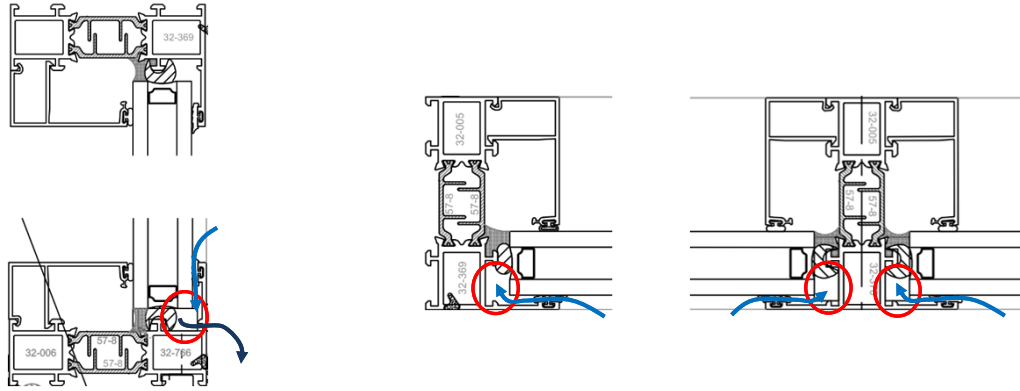


NESEA BE23 - Windows and Fenestration: Basics and Beyond

60  
© buildingscience.com

60

# AW Window/Window Wall

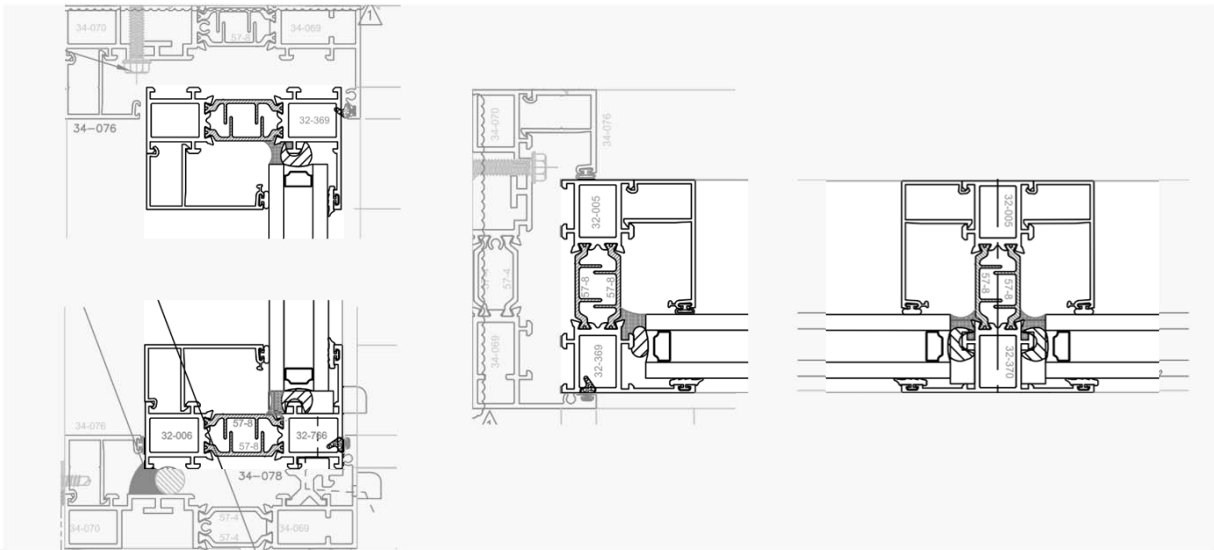


NESEA BE23 - Windows and Fenestration: Basics and Beyond

61  
© buildingscience.com

61

# AW Window/Window Wall

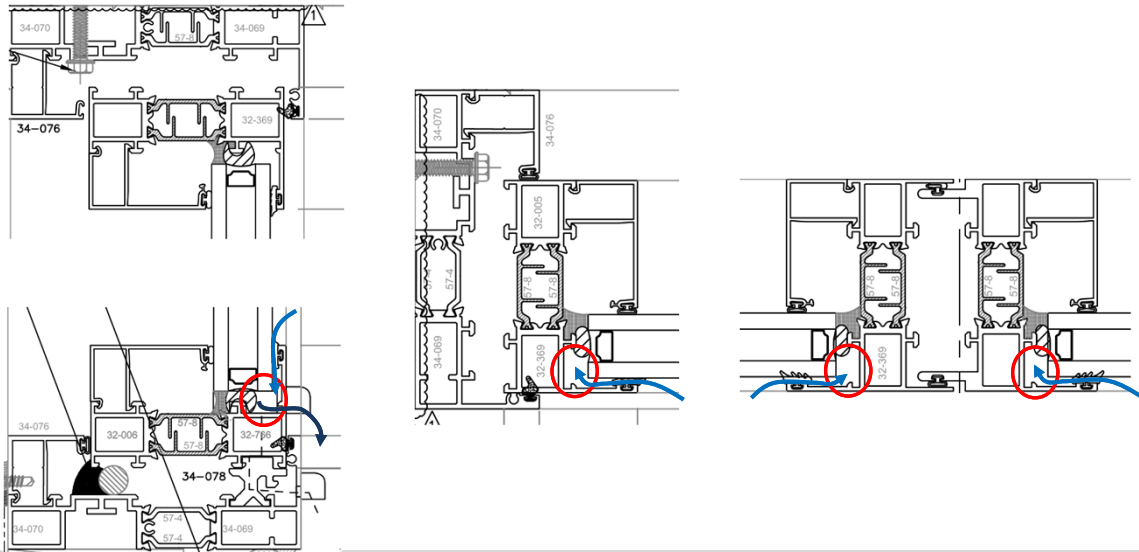


NESEA BE23 - Windows and Fenestration: Basics and Beyond

62  
© buildingscience.com

62

# AW Window/Window Wall

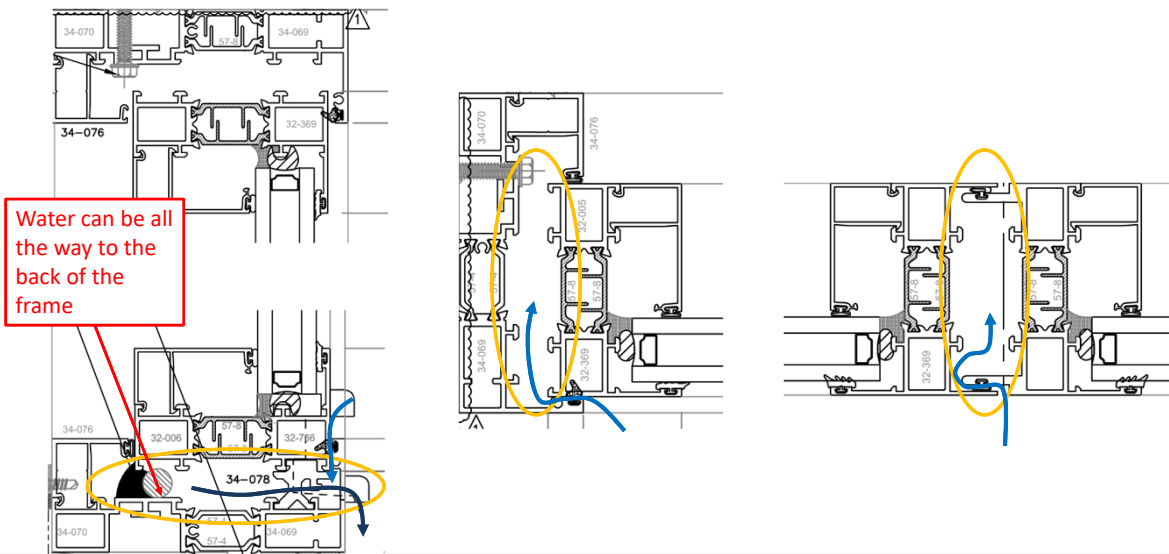


NESEA BE23 - Windows and Fenestration: Basics and Beyond

63  
© buildingscience.com

63

# AW Window/Window Wall



NESEA BE23 - Windows and Fenestration: Basics and Beyond

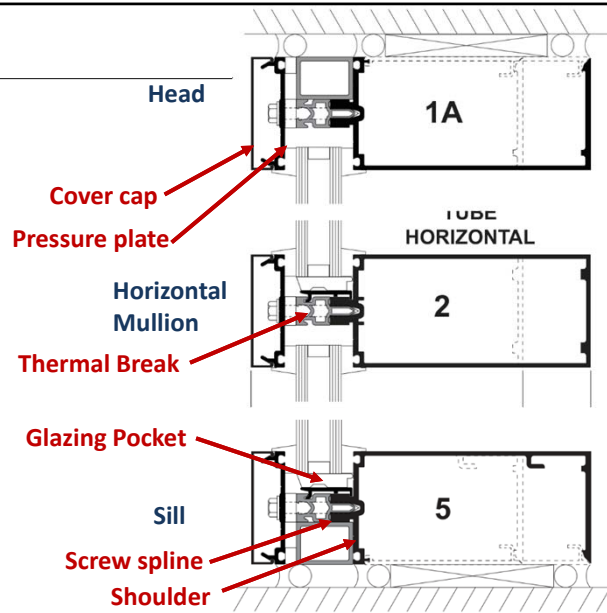
64  
© buildingscience.com

64



## Commercial Windows

- **Curtain Wall**
  - Commonly used for larger glass areas
  - Can be used for:
    - Punched openings
    - Ribbon windows
    - Full height floor to floor
    - Multi-story glazing
    - Full enclosure system
  - Manages water by compartmentalizing each glazing pocket and drains water out the front face through weep holes

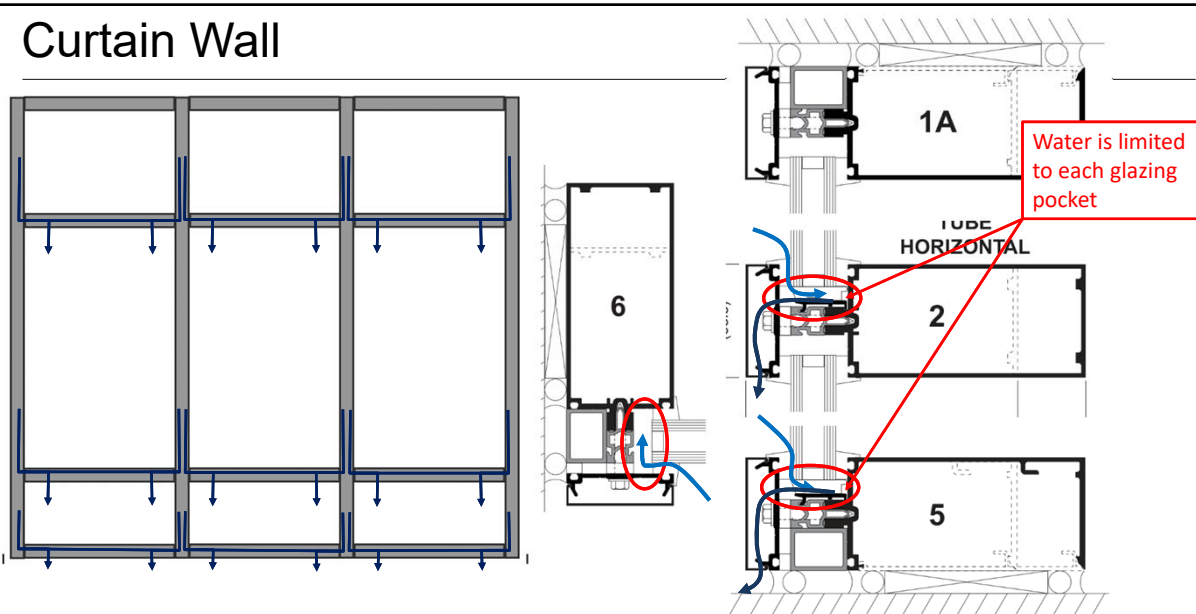


NESEA BE23 - Windows and Fenestration: Basics and Beyond

65  
© buildingscience.com

65

## Curtain Wall



NESEA BE23 - Windows and Fenestration: Basics and Beyond

66  
© buildingscience.com

66

## Commercial Windows – Interface with the wall

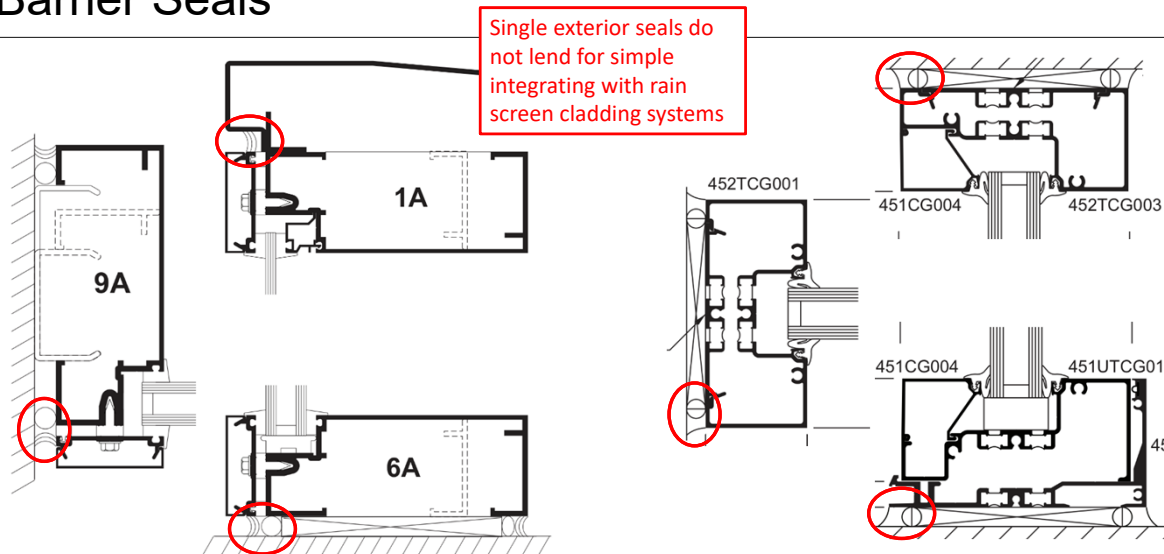
- Some commercial windows are specifically designed for integration with a rain screen
- Many windows appear to be specifically designed to be used in a barrier application (or at least that is the interpretation)
- Recommend designing the interface detail to mitigate risk of window system leakage
  - align the seals and flashing with the location of water within the window system

NESEA BE23 - Windows and Fenestration: Basics and Beyond

67  
© buildingscience.com

67

## Barrier Seals



NESEA BE23 - Windows and Fenestration: Basics and Beyond

68  
© buildingscience.com

68

## Commercial Windows – Interface with the wall

---

- Barrier Seals
  - Resistance from subcontractors to allow for the exterior seal to be weeped to the exterior
  - Claim “it is part of how the system is tested”
  - Window manufacturer is concerned with ensuring water does not leak “through” their system – They do not design the interface with the wall
  - This can lead to difficult scope issues on projects

69

## Commercial Windows – Interface with the wall

---

- Recommend to use a 3-seal approach (Curtain wall might be an exception)
  - Interior air seal
  - Middle primary seal to water control layer
  - Exterior rain screen seal to the cladding
- Include a membrane pan flashing extending at least to the innermost location that water would be expected in the frame

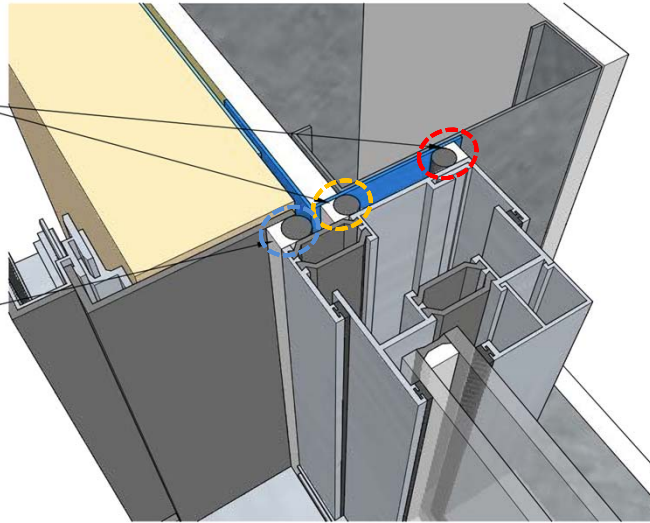
70

## AW Window – Interface with the wall

### Jamb

Full interior and exterior backer rod and sealant joint between the window and the membrane lined rough opening

Exterior sealant beauty bead between composite metal cladding and window



NESEA BE23 - Windows and Fenestration: Basics and Beyond

71  
© buildingscience.com

71

## AW Window – Interface with the wall

### Sill

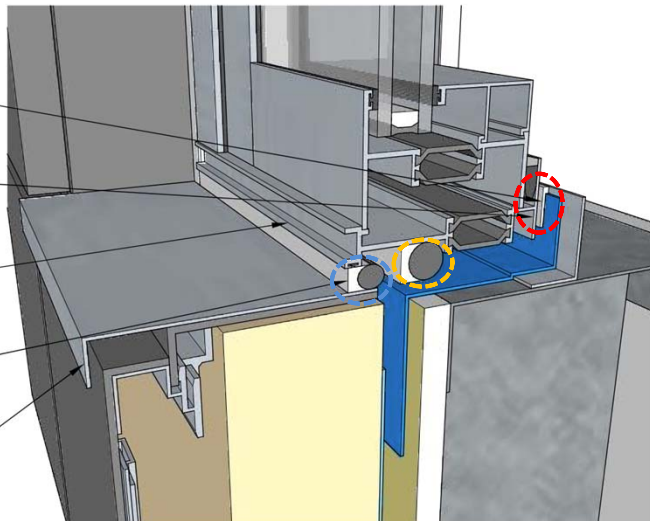
Interior sealant bedding joint between the window and the membrane lined back dam angle

Anchor window sill receiver track through the back dam angle. Metal angle designed to accommodate all window loads

Drainage of rough opening into cladding cavity at weep mesh locations (not visible)

Exterior sealant beauty bead between composite metal cladding and window

Optional metal sill flashing integrated with the composite metal cladding panel to reduce the potential for rainwater entry in behind the cladding assembly



NESEA BE23 - Windows and Fenestration: Basics and Beyond

72  
© buildingscience.com

72



NESEA BE23 - Windows and Fenestration: Basics and Beyond

73  
© buildingscience.com

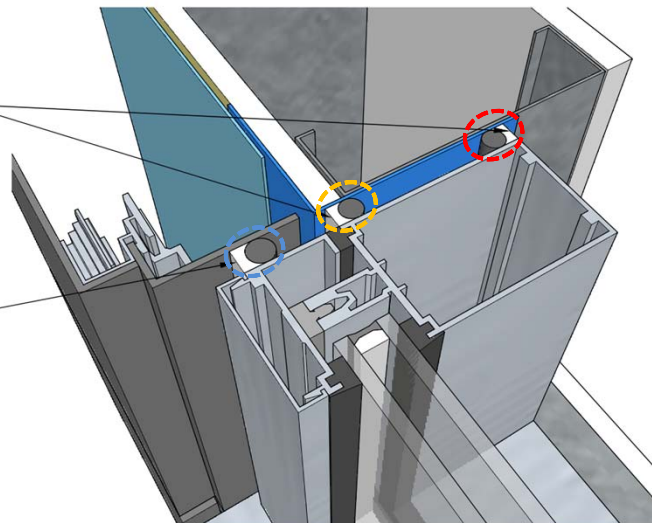
73

## Curtain Wall – Interface with the wall

### Jamb

Full interior and exterior backer rod and sealant joint between the window and the membrane lined rough opening

Exterior sealant beauty bead between composite metal cladding and window



NESEA BE23 - Windows and Fenestration: Basics and Beyond

74  
© buildingscience.com

74

## Curtain Wall – Interface with the wall

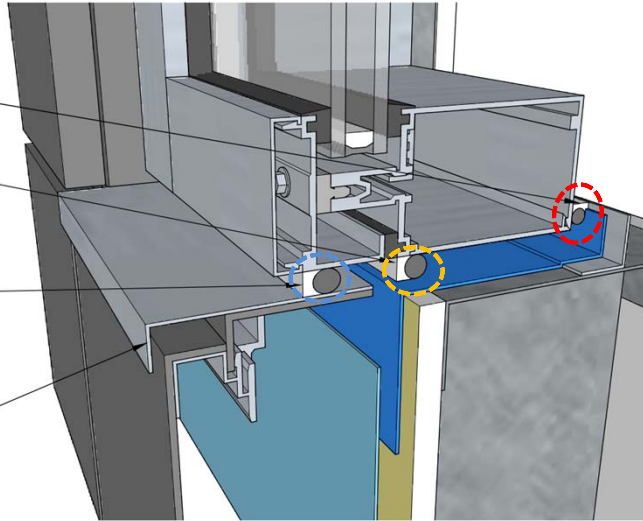
### Sill

Full interior backer rod and sealant joint between the window and the membrane lined back dam angle

Full exterior backer rod and sealant joint between the window and the membrane lined rough opening

Exterior sealant beauty bead between composite metal cladding and window

Optional metal sill flashing integrated with the composite metal cladding panel to reduce the potential for rainwater entry in behind the cladding assembly



NESEA BE23 - Windows and Fenestration: Basics and Beyond

75  
© buildingscience.com

75



NESEA BE23 - Windows and Fenestration: Basics and Beyond

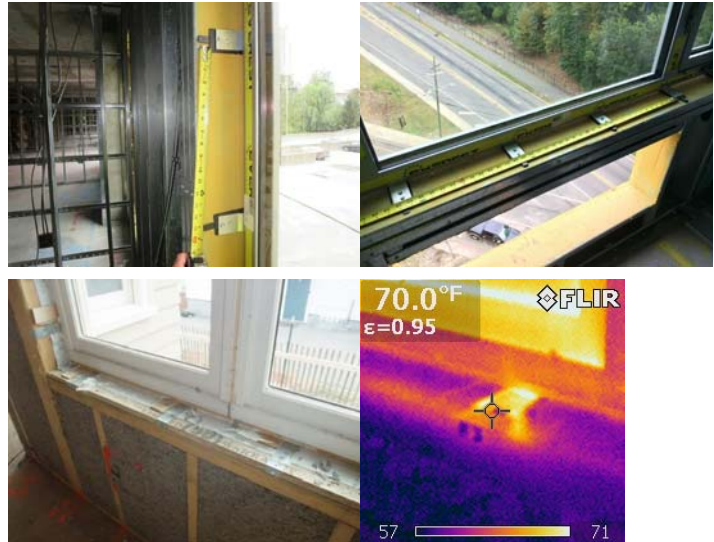
76  
© buildingscience.com

76



## Window Air Sealing with Strap Anchors

- Window attachment clips common on commercial windows, walls with exterior insulation
- Commonly a “miss” in detailing of interior air seal



NESEA BE23 - Windows and Fenestration: Basics and Beyond

77  
© buildingscience.com

77

## Window Air Sealing with Clips

- Detailing interior air seal with tape; cover up window clip
- Detailing interior air seal with sealant—“bury” clip perimeter in sealant



NESEA BE23 - Windows and Fenestration: Basics and Beyond

78  
© buildingscience.com

78

# Window Condensation & Comfort

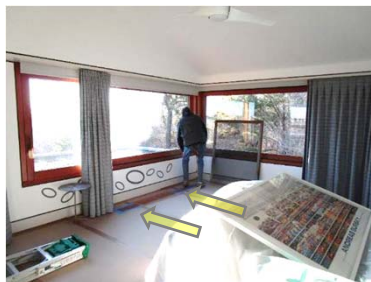
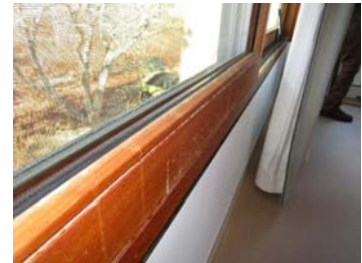
NESEA BE23 - Windows and Fenestration: Basics and Beyond

79  
© buildingscience.com

79

## Window Condensation Problems

- Outdoor temperature
- Indoor humidity
- Indoor temperature
- Interior shading
- Heating directed at windows
- Geometry e.g. “tunnel”
- Window frame materials & design (aluminum, steel)
- Single-glazed windows



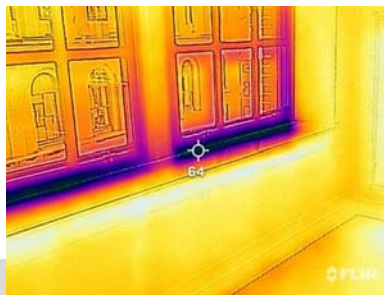
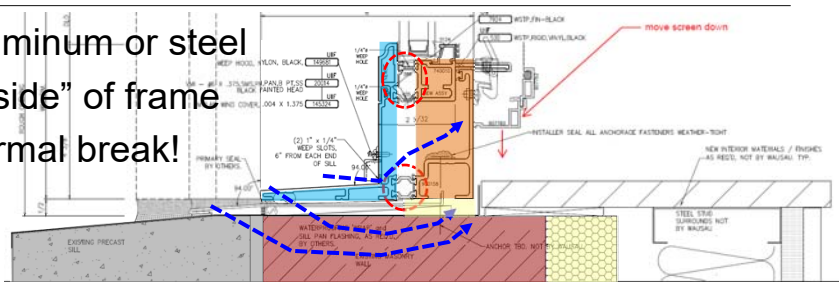
NESEA BE23 - Windows and Fenestration: Basics and Beyond

80  
© buildingscience.com

80

## Window Condensation Problems

- Thermally broken aluminum or steel
- “Warm side” & “cold side” of frame
- Don’t bypass the thermal break!
- “Infill” insulation?
- Vent hole air leak?



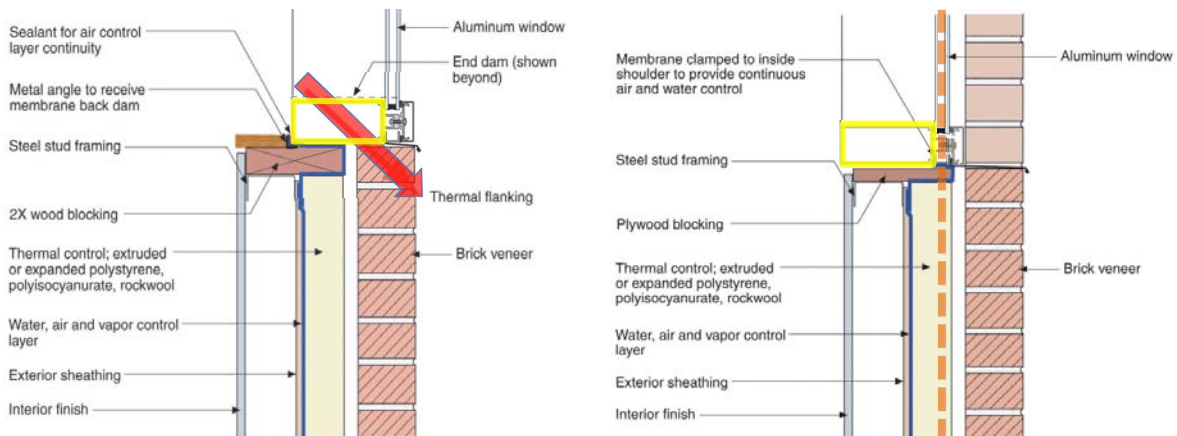
NESEA BE23 - Windows and Fenestration: Basics and Beyond

© buildingscience.com

81

## Aligning Window Thermal Break w. Wall/Insulation

- Misalignment = thermal loss, condensation risks



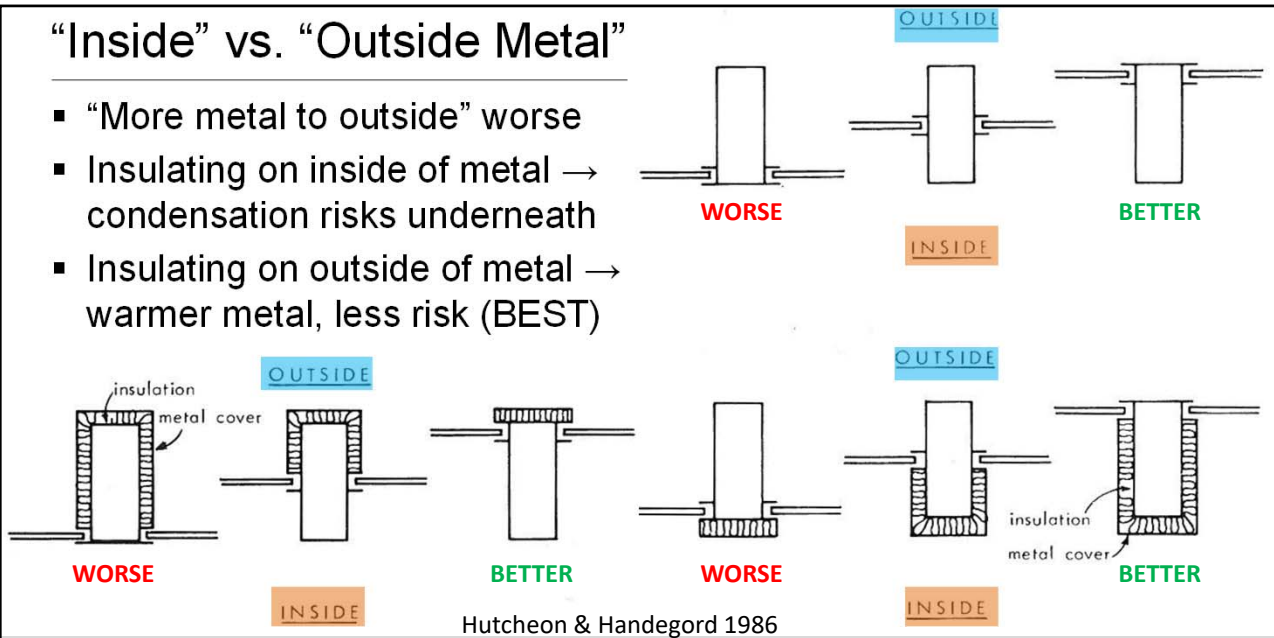
NESEA BE23 - Windows and Fenestration: Basics and Beyond

82  
© buildingscience.com

82

### “Inside” vs. “Outside Metal”

- “More metal to outside” worse
- Insulating on inside of metal → condensation risks underneath
- Insulating on outside of metal → warmer metal, less risk (BEST)



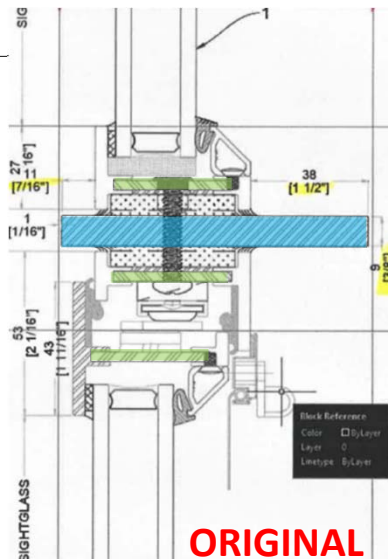
NESEA BE23 - Windows and Fenestration: Basics and Beyond

83  
© buildingscience.com

83

### “Inside” vs. “Outside Metal”

- Structural element: “bar” to “tee”



**ORIGINAL**

NESEA BE23 - Windows and Fenestration: Basics and Beyond

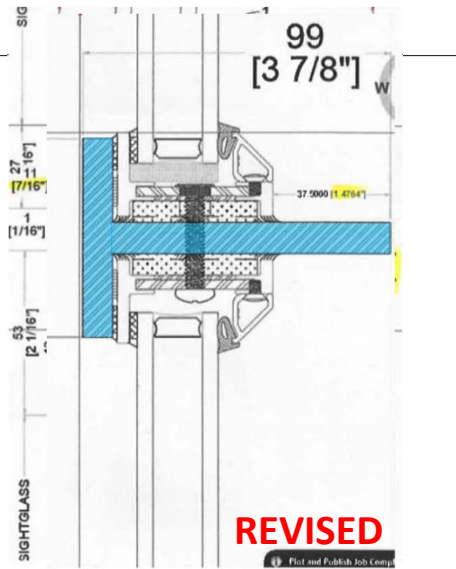
84  
© buildingscience.com

84



## “Inside” vs. “Outside Metal”

- Structural element: “bar” to “tee”



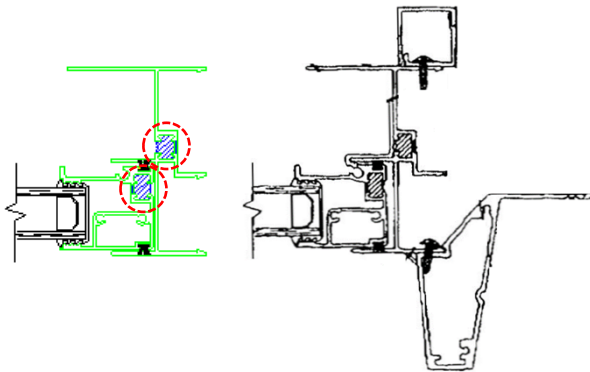
NESEA BE23 - Windows and Fenestration: Basics and Beyond

85  
© buildingscience.com

85

## “Inside” vs. “Outside Metal”

- Exterior “shadow box” profile



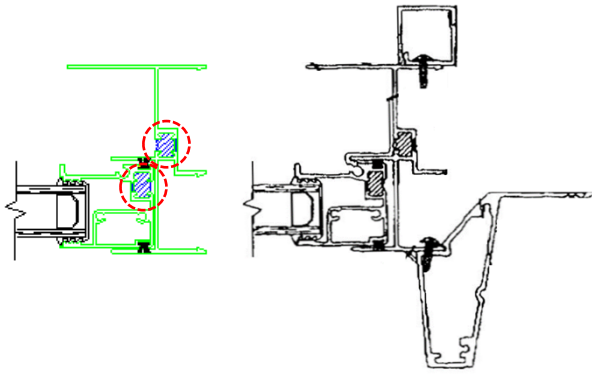
NESEA BE23 - Windows and Fenestration: Basics and Beyond

86  
© buildingscience.com

86

## “Inside” vs. “Outside Metal”

- Exterior “shadow box” profile



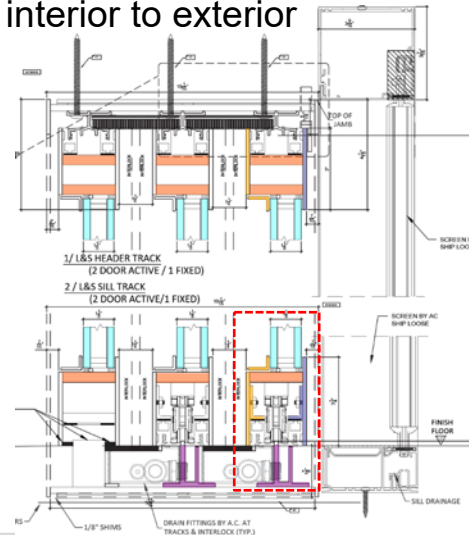
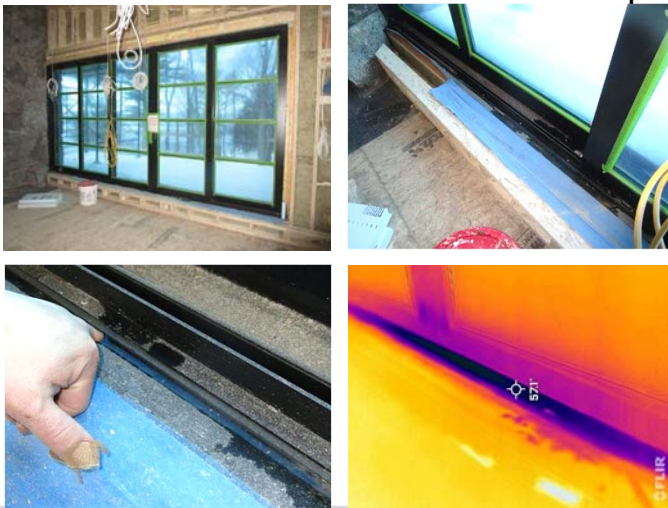
NESEA BE23 - Windows and Fenestration: Basics and Beyond

87  
© buildingscience.com

87

## Multi-Leaf Lift/Slide Doors

- Slider needs to ride on solid rail—spans interior to exterior



NESEA BE23 - Windows and Fenestration: Basics and Beyond

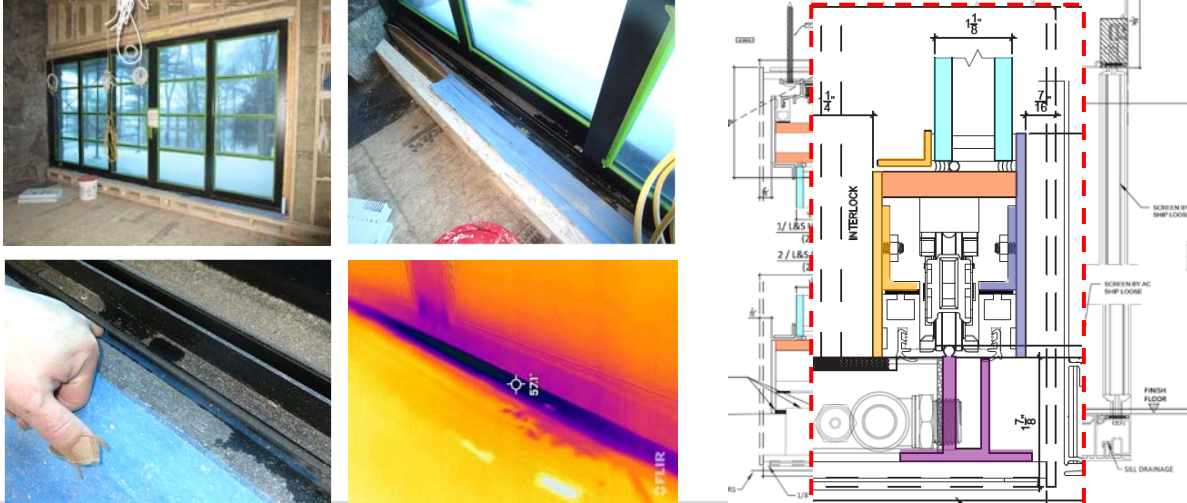
88  
© buildingscience.com

88



## Multi-Leaf Lift/Slide Doors

- Slider needs to ride on solid rail—spans interior to exterior



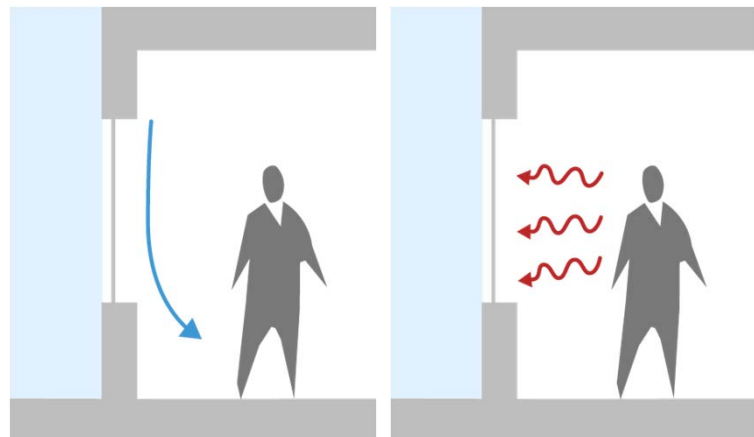
NESEA BE23 - Windows and Fenestration: Basics and Beyond

89  
© buildingscience.com

89

## Window Condensation and Comfort

- “Downdraft discomfort”
- “Radiative discomfort”
- Problems worse with larger & taller windows
- Problems worse if less clothed
- Consider triple glazing?
  - Energy
  - Condensation
  - Comfort



Illustrations © Payette, Architect

NESEA BE23 - Windows and Fenestration: Basics and Beyond

90  
© buildingscience.com

90

## Questions?

---

Peter Baker  
pbaker [at] buildingscience [dot] com

Kohta Ueno  
kohta [at] buildingscience [dot] com

Presentation will be available at:  
<https://buildingscience.com/past-events>



91

## Document Resources

---

- BSD-006: Can Highly Glazed Building Façades Be Green?  
<https://buildingscience.com/documents/insights/bsi-006-can-fully-glazed-curtainwalls-be-green>
- BSI-004: Drainage, Holes and Moderation  
<https://buildingscience.com/documents/insights/bsi-004-drainage-holes-and-moderation>
- BSI-022: The Star-Crossed Lovers of Building Science  
<https://buildingscience.com/documents/building-science-insights-newsletters/bsi-022-star-crossed-lovers-building-science>
- Info-302: Pan Flashing for Exterior Wall Openings  
<https://buildingscience.com/documents/information-sheets/pan-flashing-for-exterior-wall-openings>
- BA-1203: Measure Guideline—Wood Window Repair, Rehabilitation, and Replacement  
<https://buildingscience.com/documents/bareports/ba-1203-wood-window-repair-rehabilitation-replacement/view>
- BA-1406: Final Measure Guideline: Incorporating Thick Layers of Exterior Rigid Insulation on Walls  
<https://buildingscience.com/documents/bareports/ba-1406-final-measure-guideline-incorporating-thick-layers-exterior-rigid-insulation/view>
- GM-1302: Mass Save Deep Energy Retrofit Builder Guide  
<https://buildingscience.com/documents/guides-and-manuals/gm-mass-save-der-builder-guide/view>
- Windows and Water Leakage Testing – BSC Expert Session 2014  
<https://buildingscience.com/sites/default/files/2014-11-20%20Windows%20and%20Water%20Leakage%20Baker.pdf>

92

## Document Resources

---

- Payette - Glazing and Winter Comfort Tool  
<https://www.payette.com/glazing-and-winter-comfort-tool/>
- Efficient Windows Collaborative (NFRRC)  
<https://efficientwindows.org/>
- GBA - Rating Windows for Condensation Resistance  
<https://www.greenbuildingadvisor.com/article/rating-windows-for-condensation-resistance>
- Structural Performance of Windows in Walls with Continuous Insulation (Building America/Home Innovation)  
<https://www.energy.gov/eere/buildings/structural-performance-windows-walls-continuous-insulation>