

Joseph Lstiburek, Ph.D., P.Eng, ASHRAE Fellow

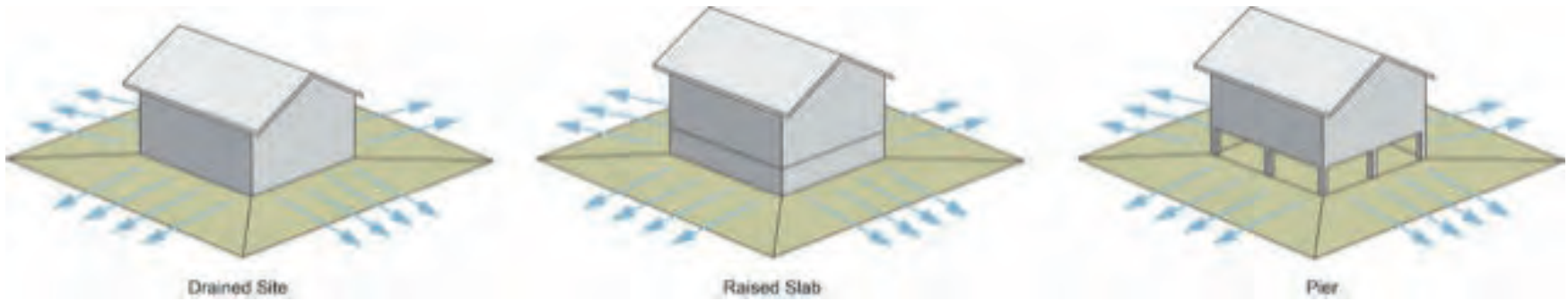
Building Science

Floodproofing

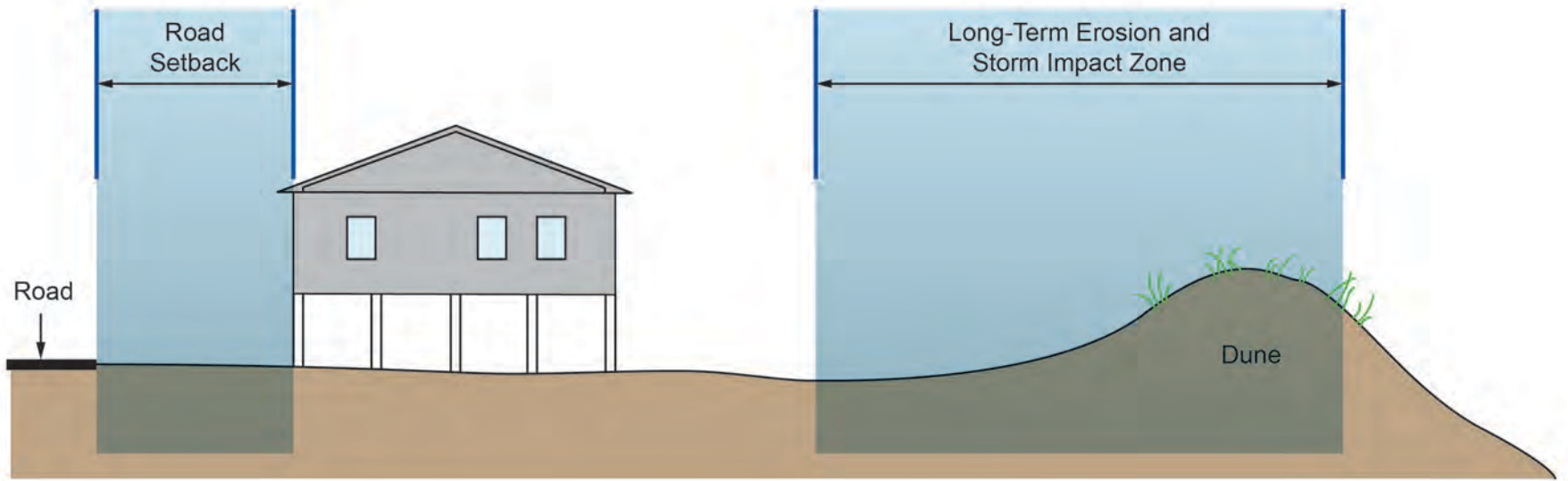
Floods

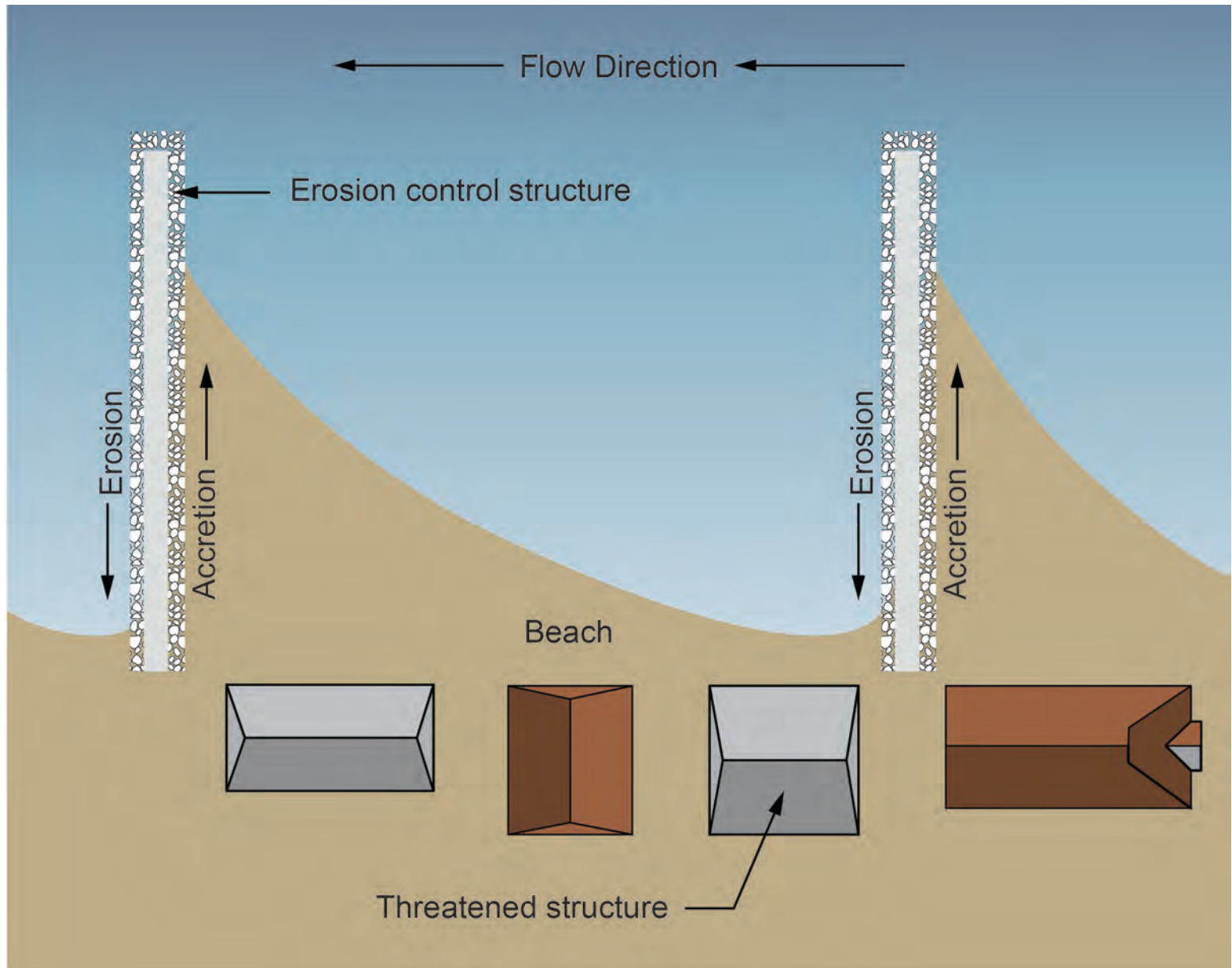


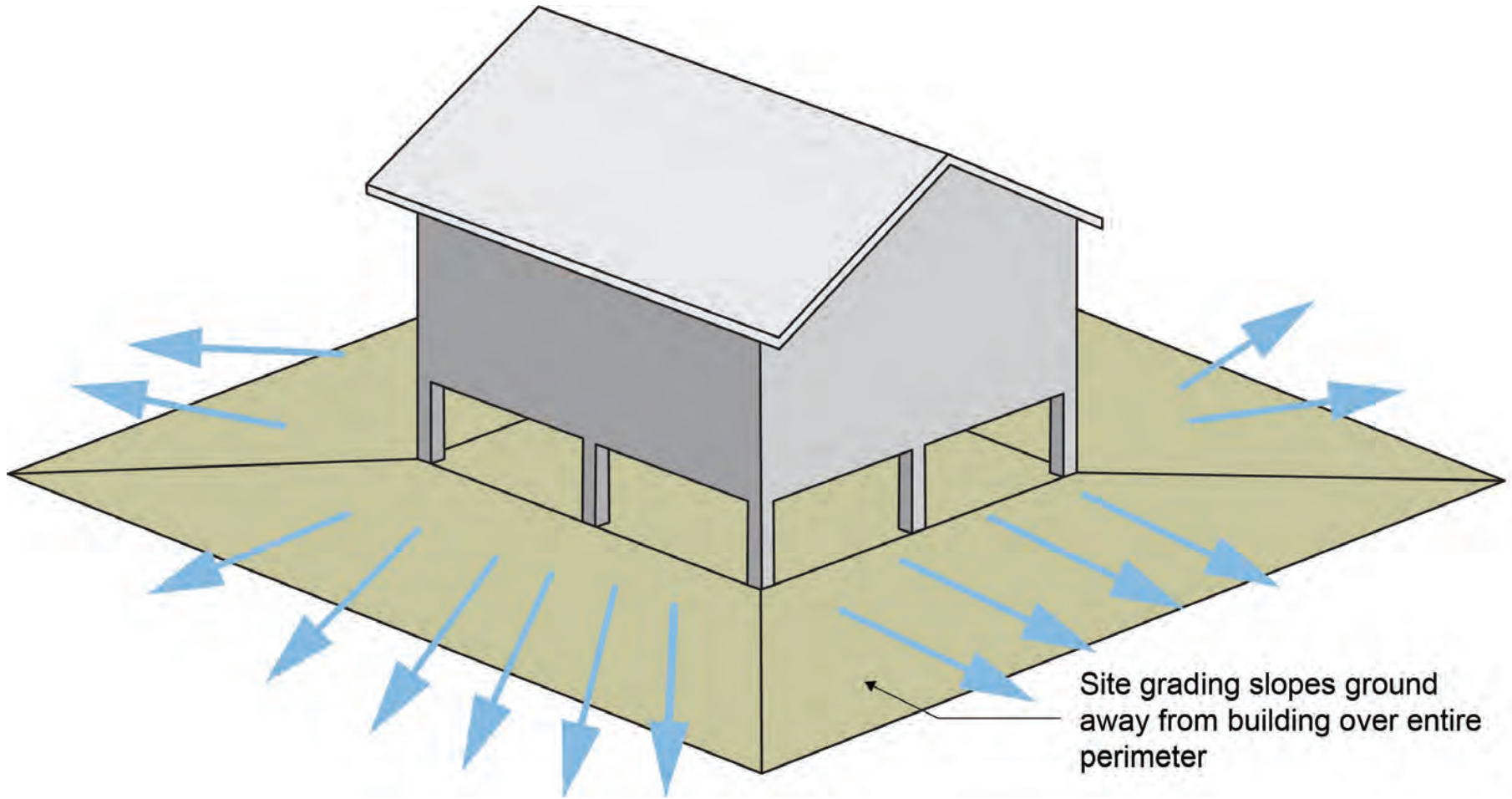














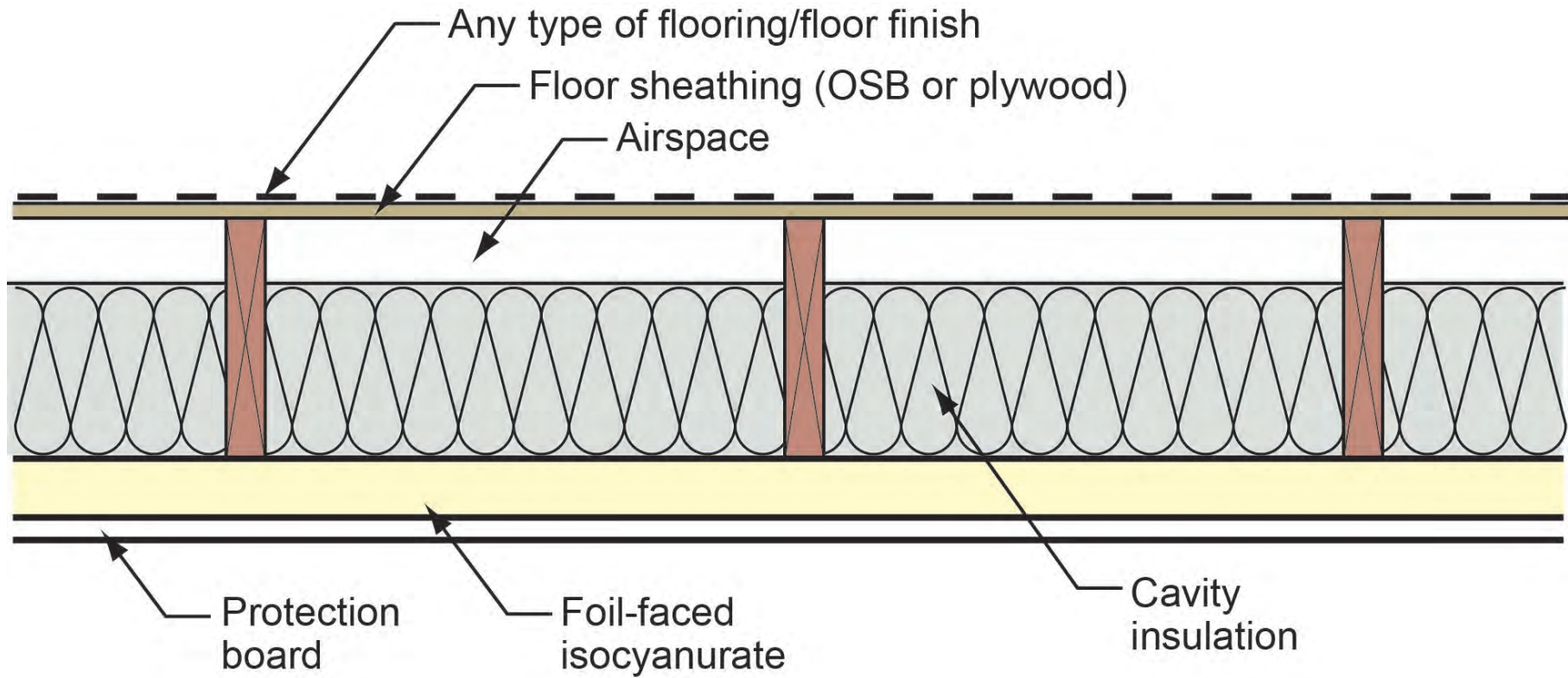


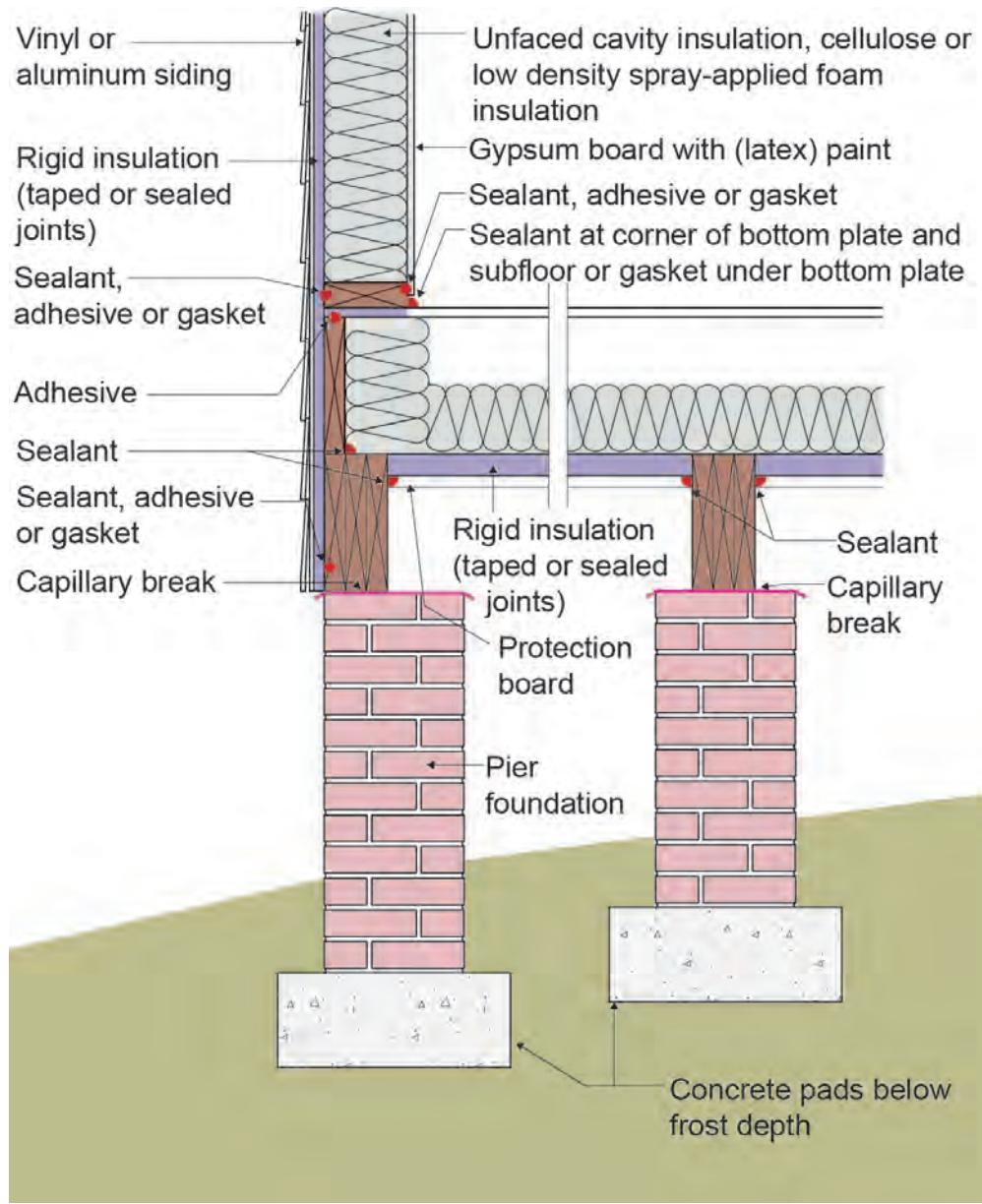


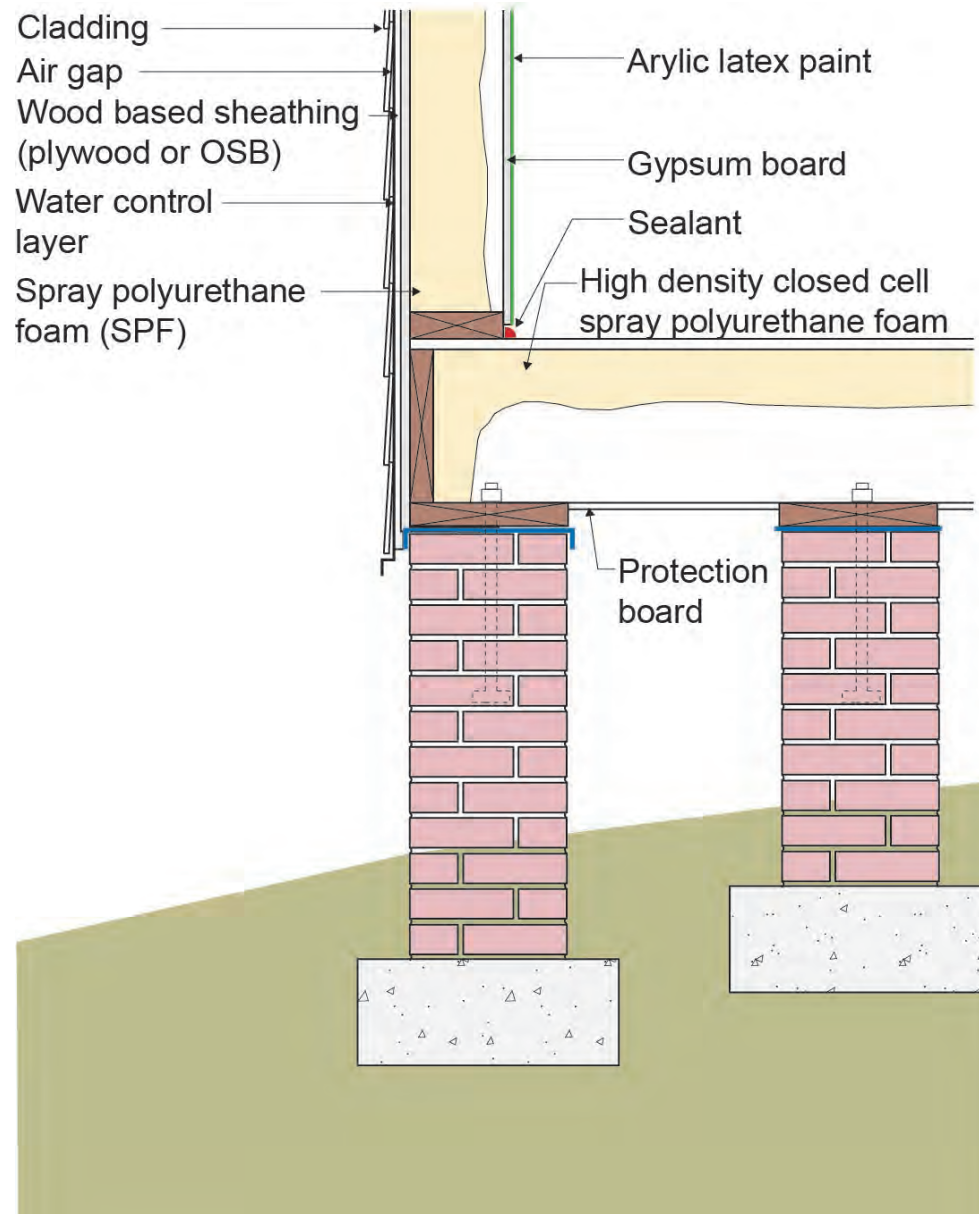




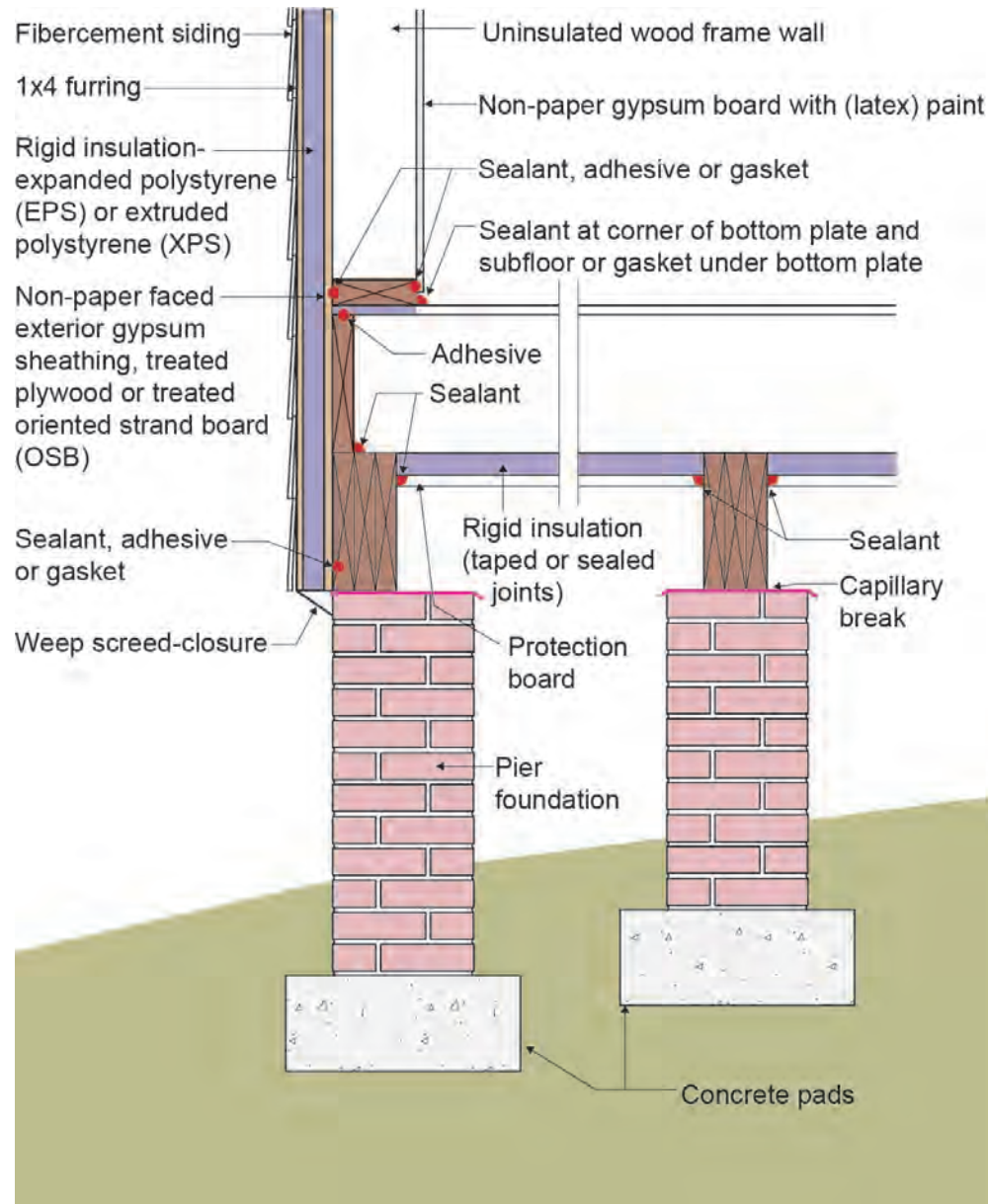


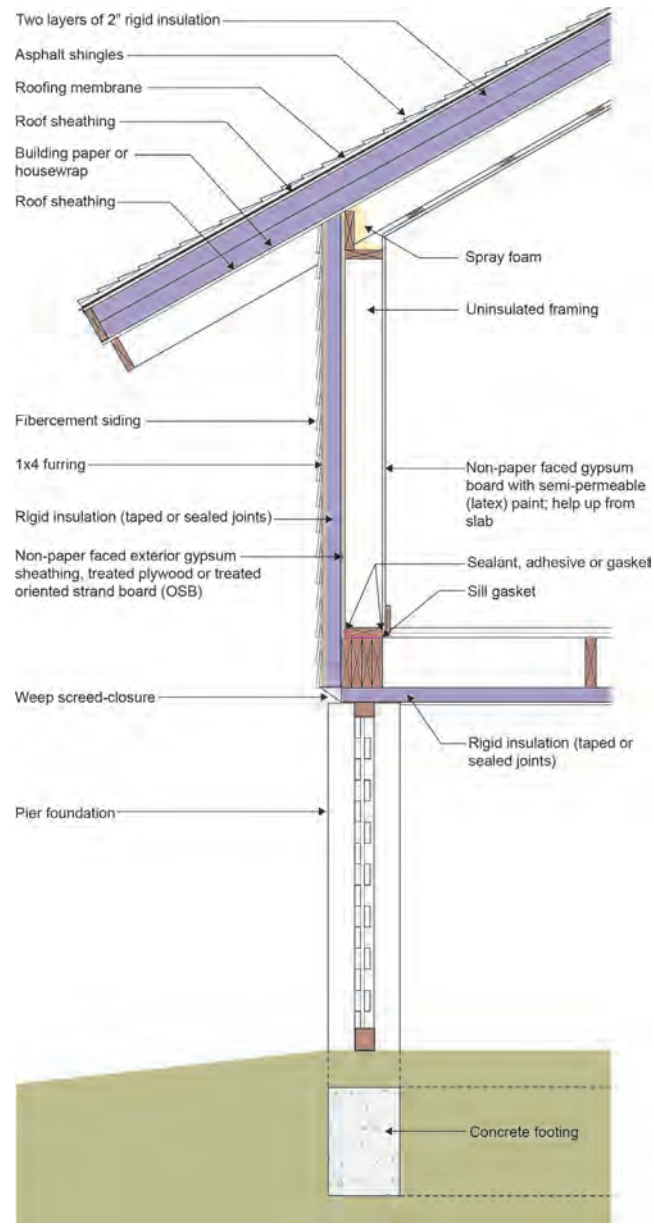


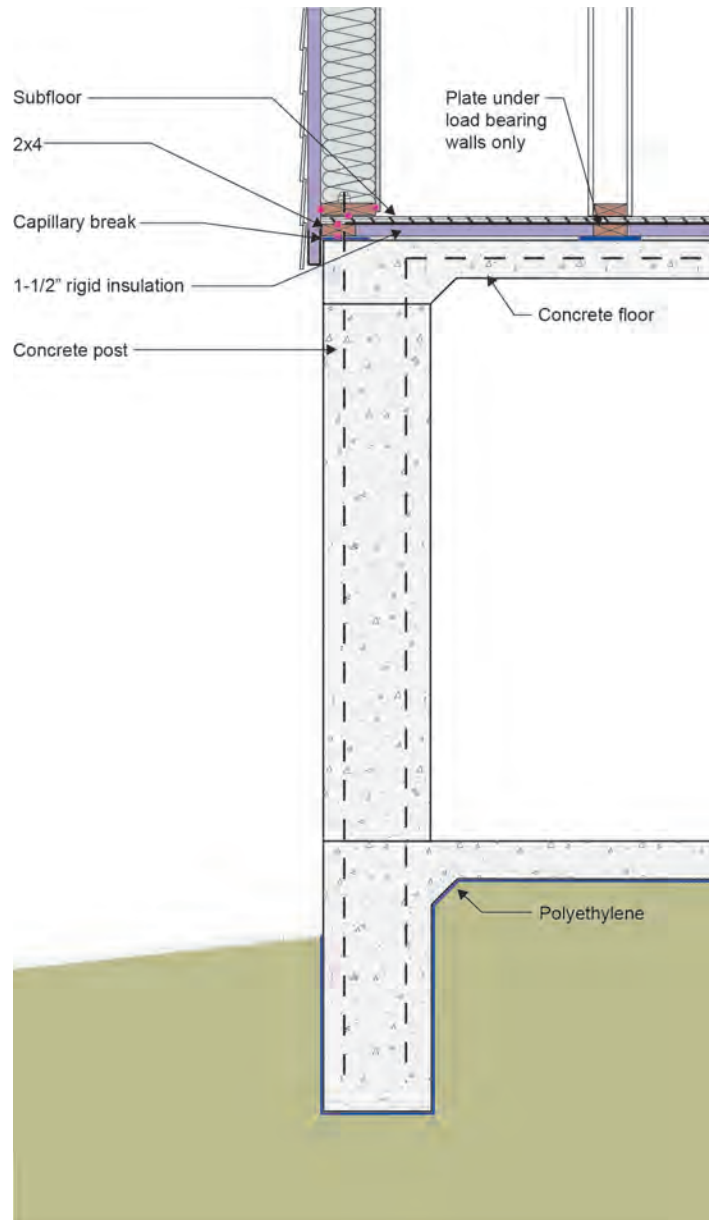


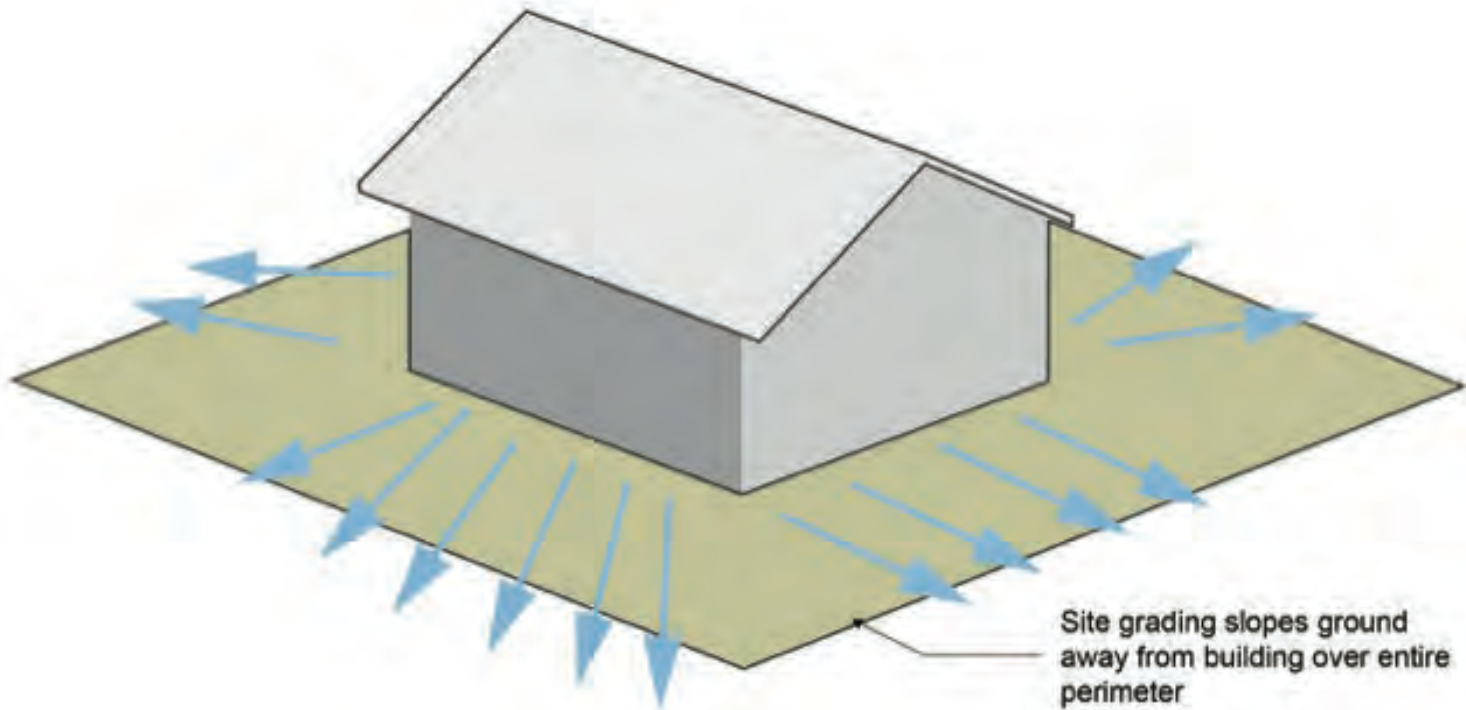


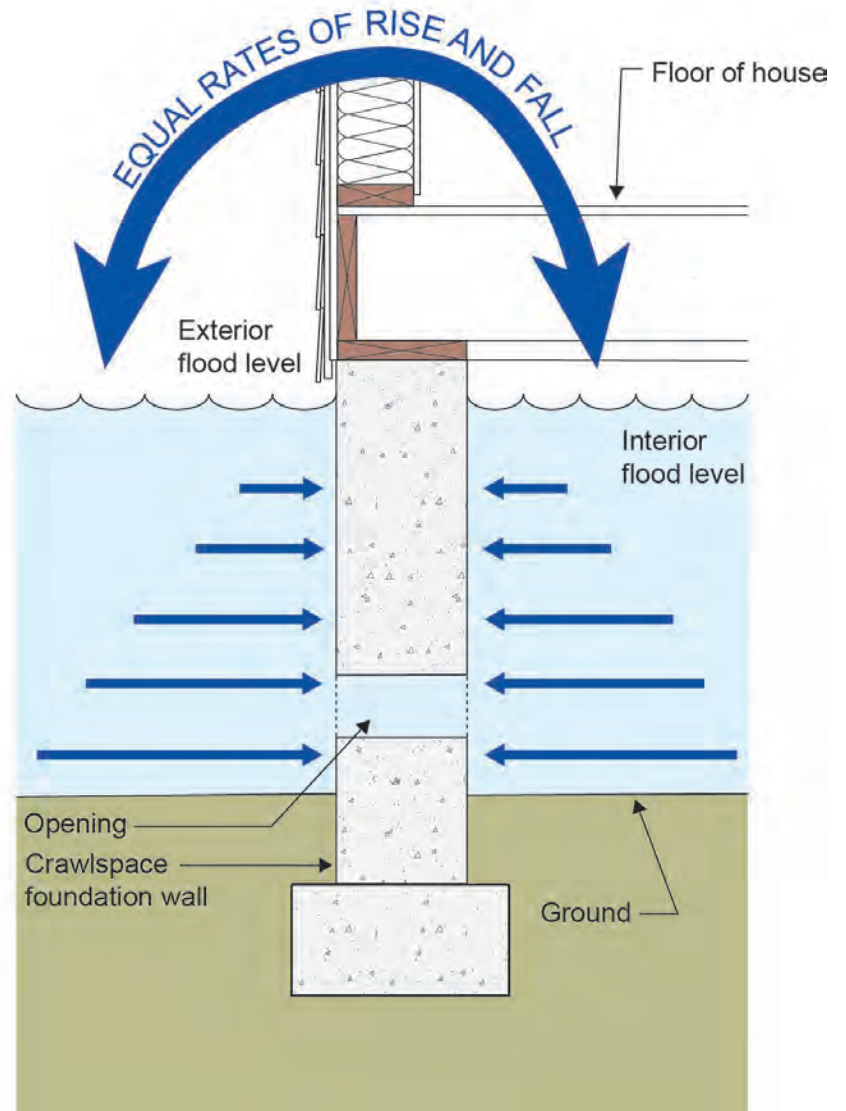
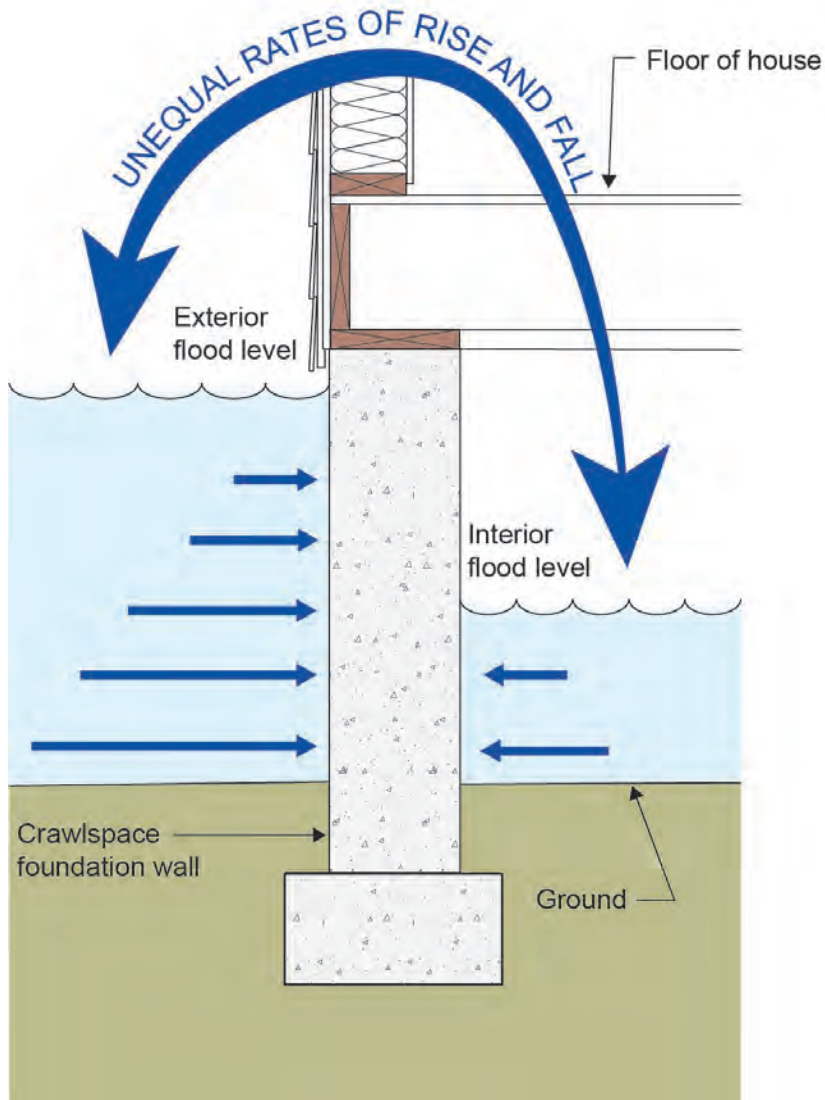


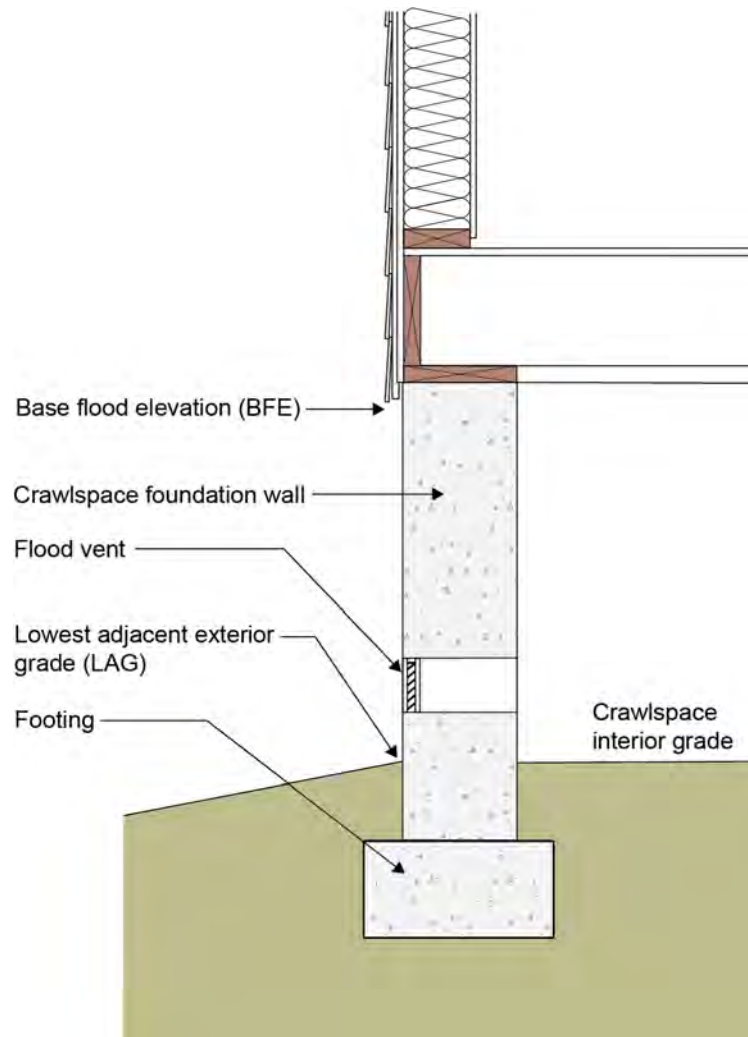


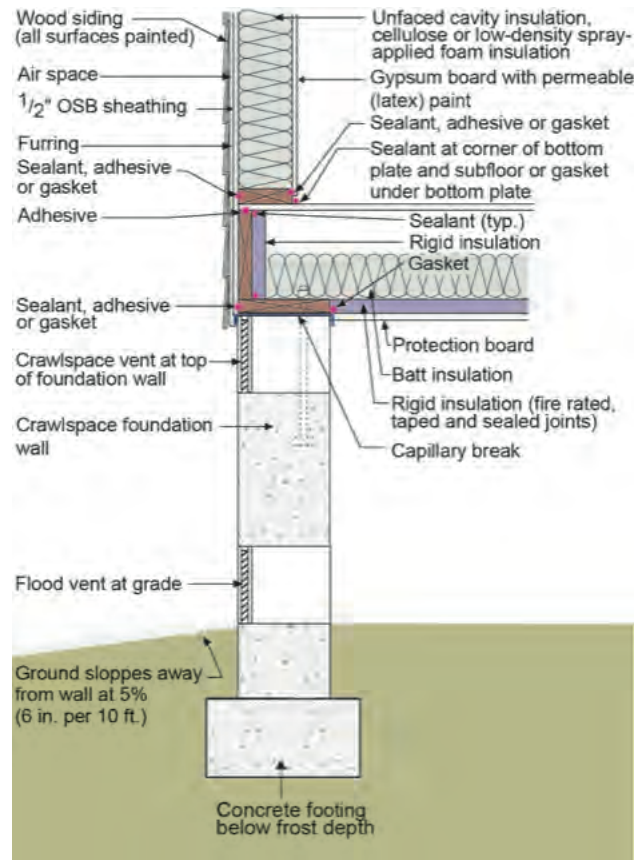


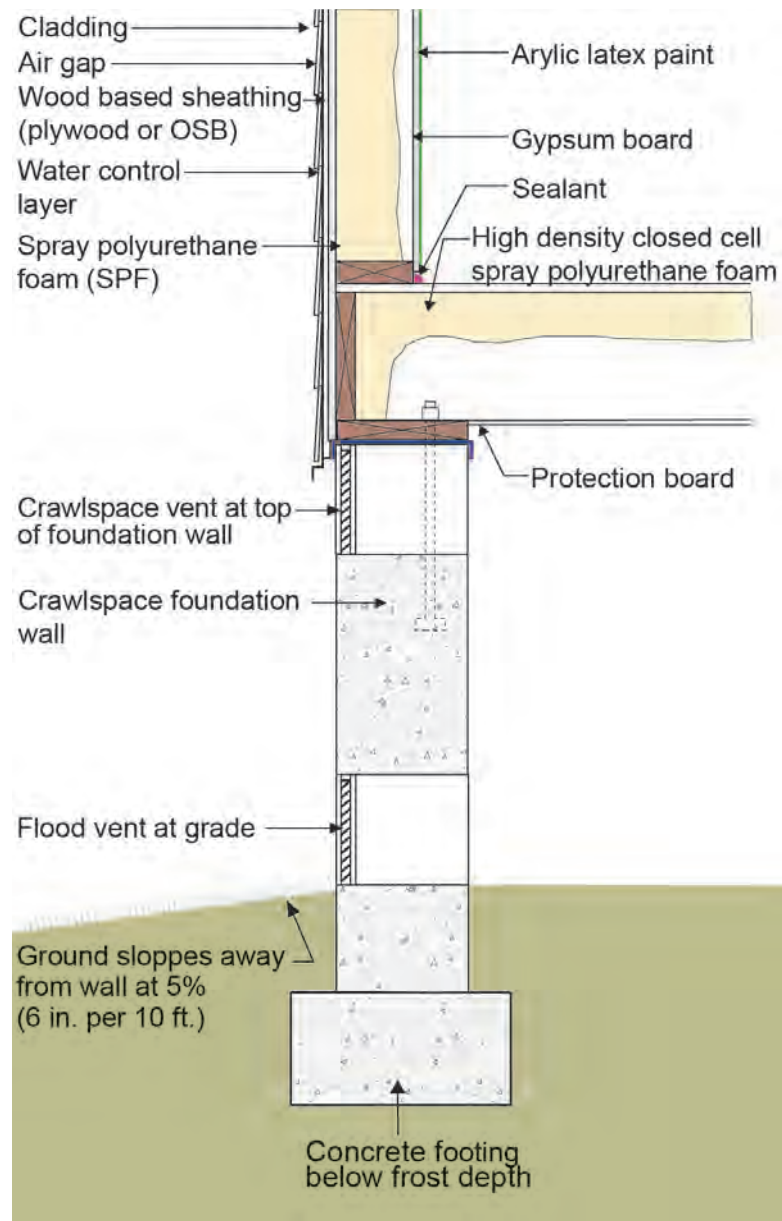


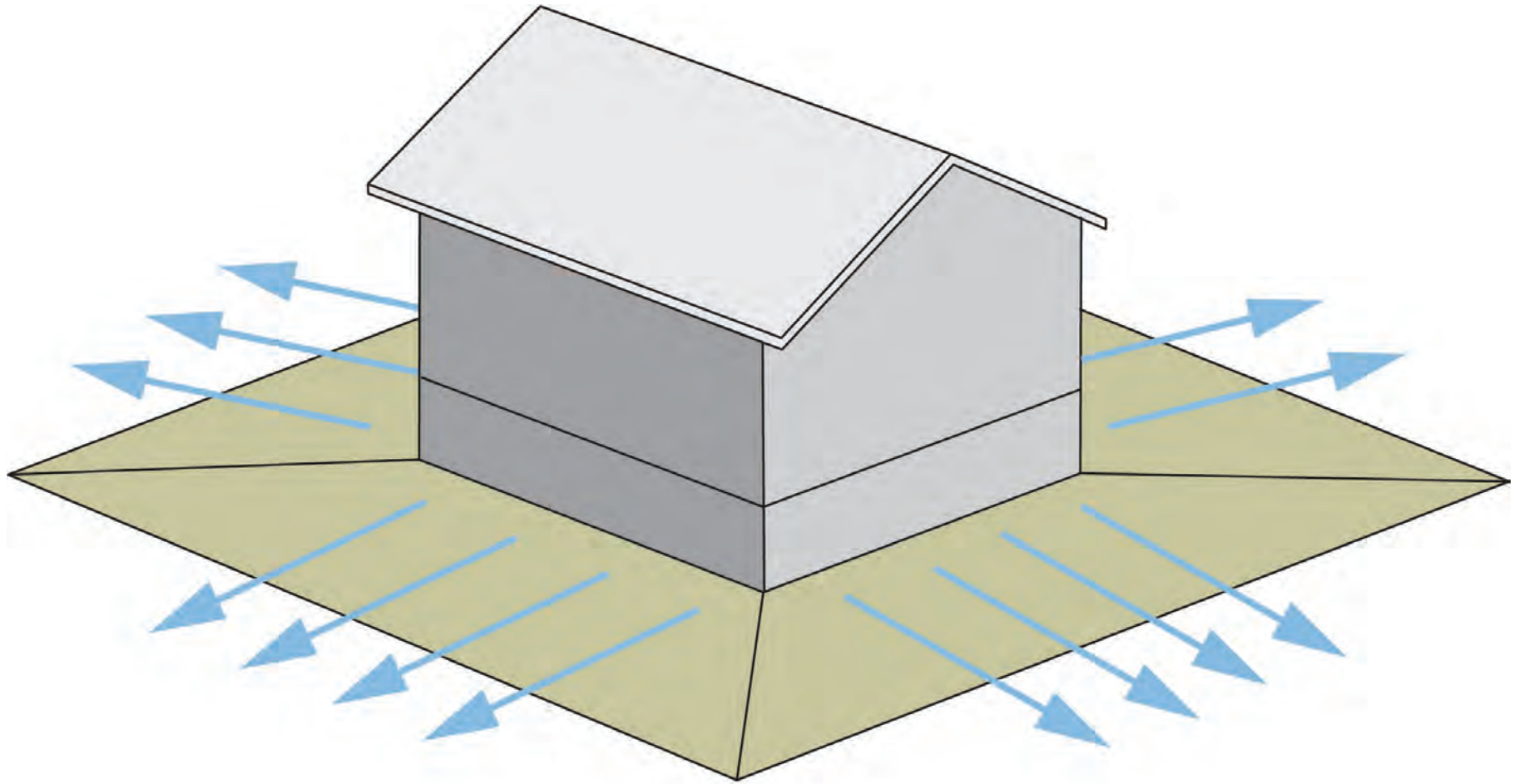




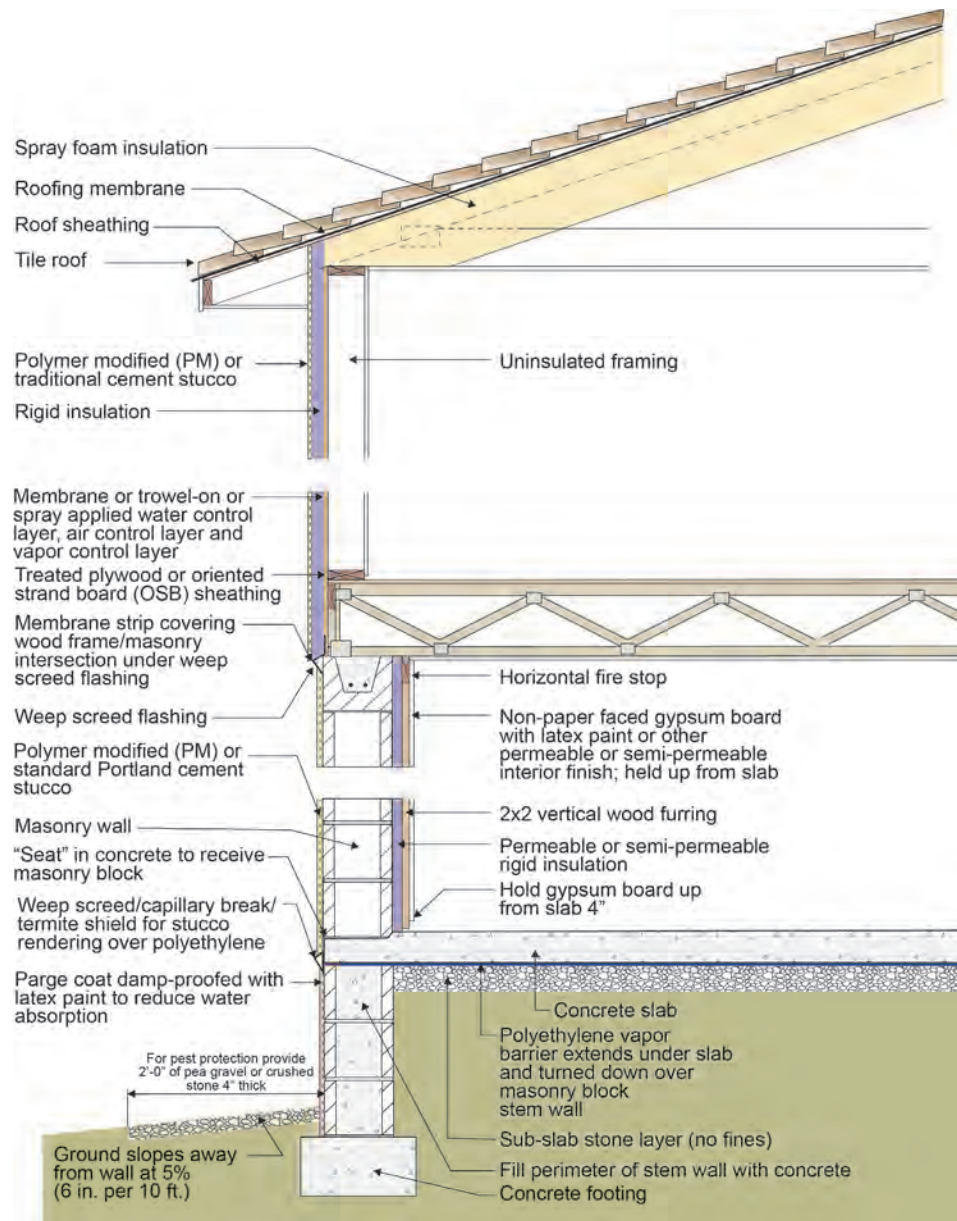


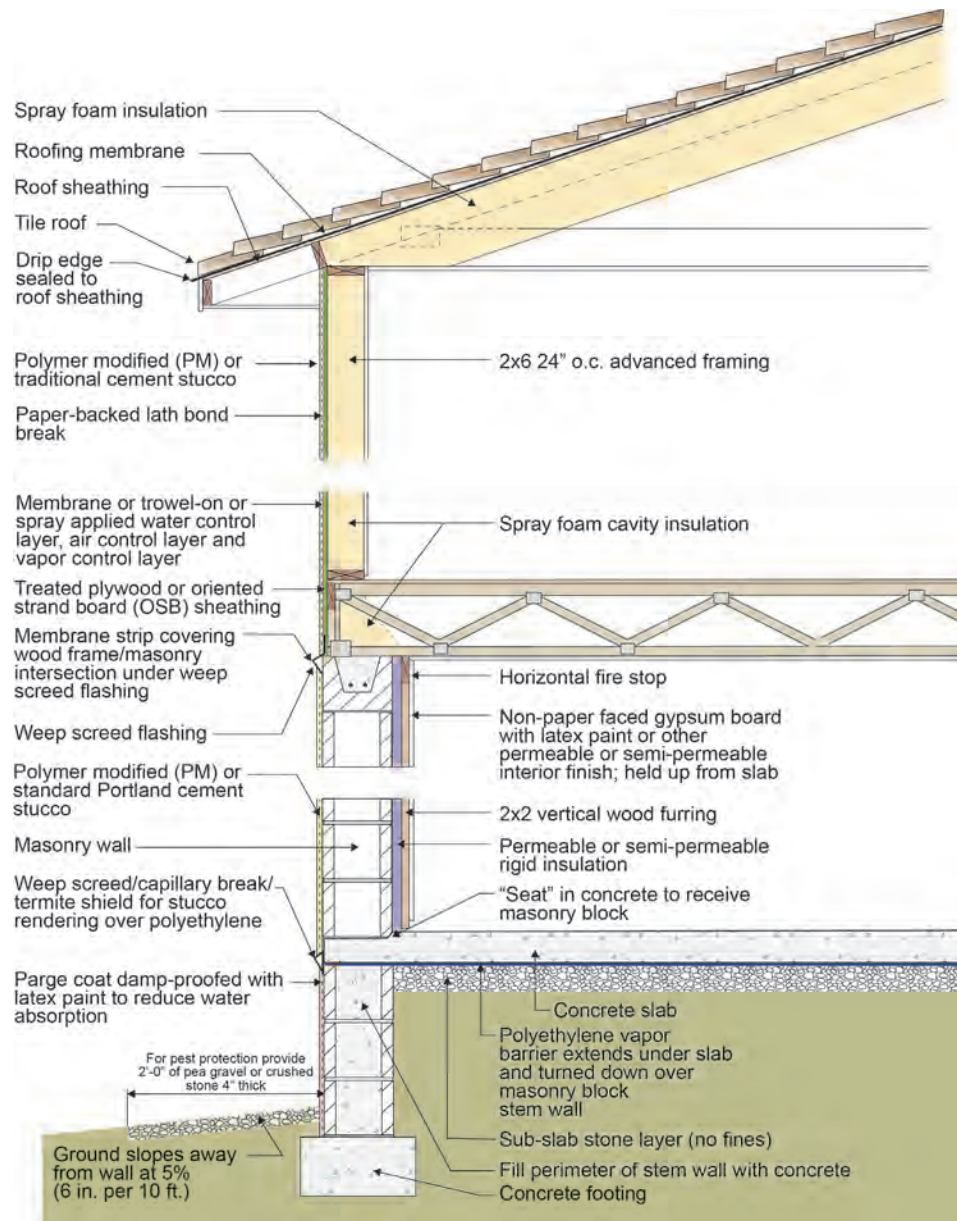


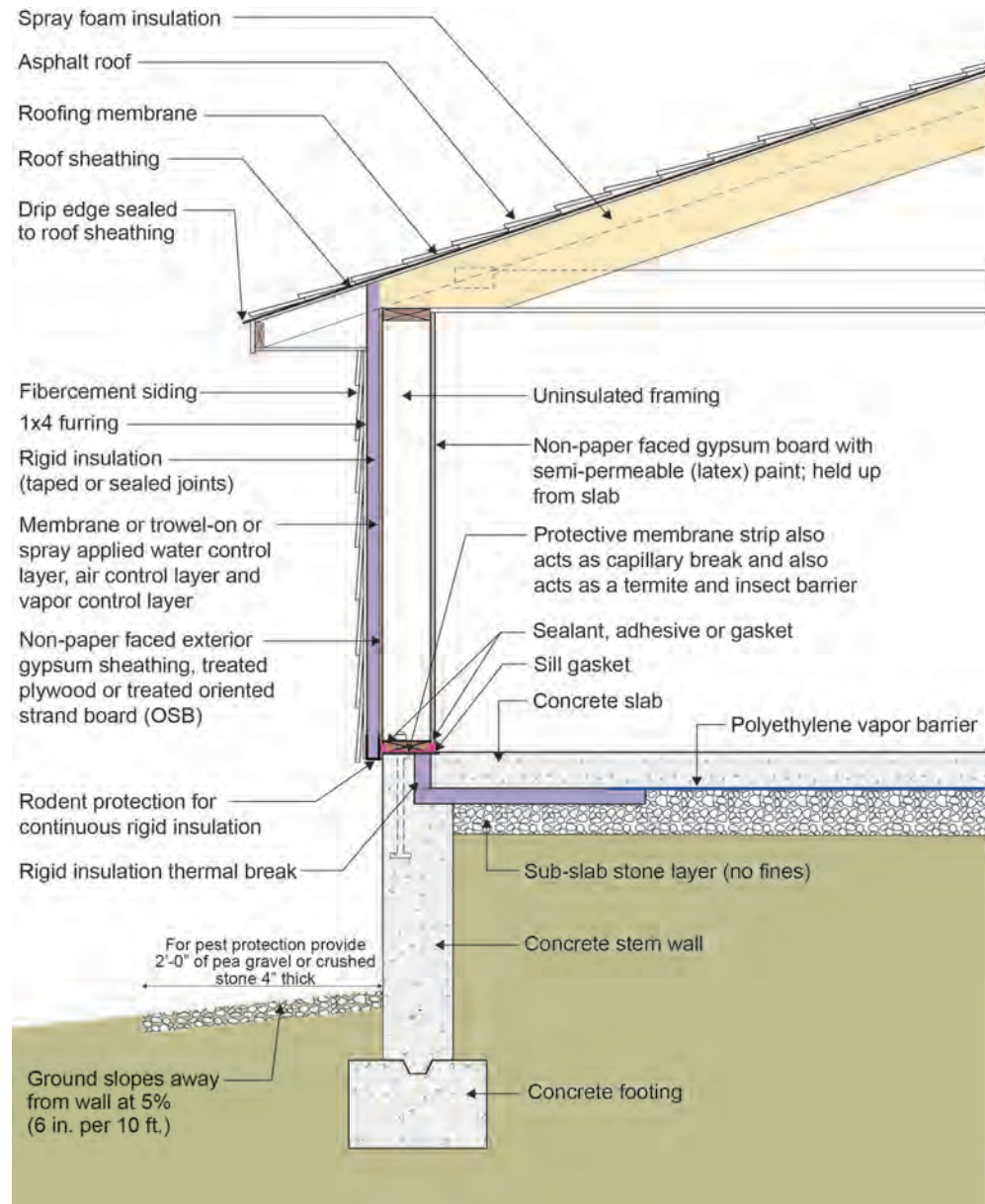


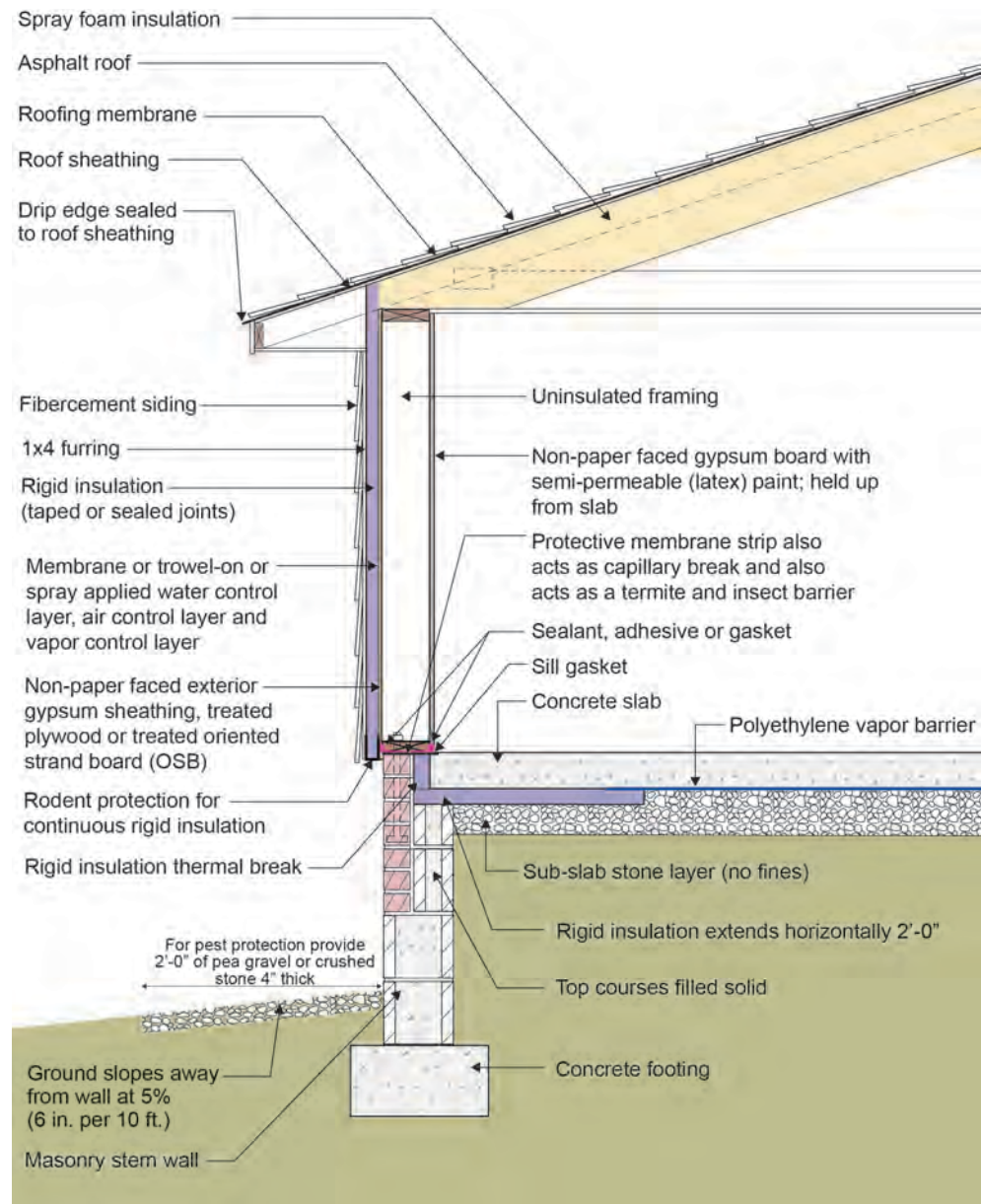


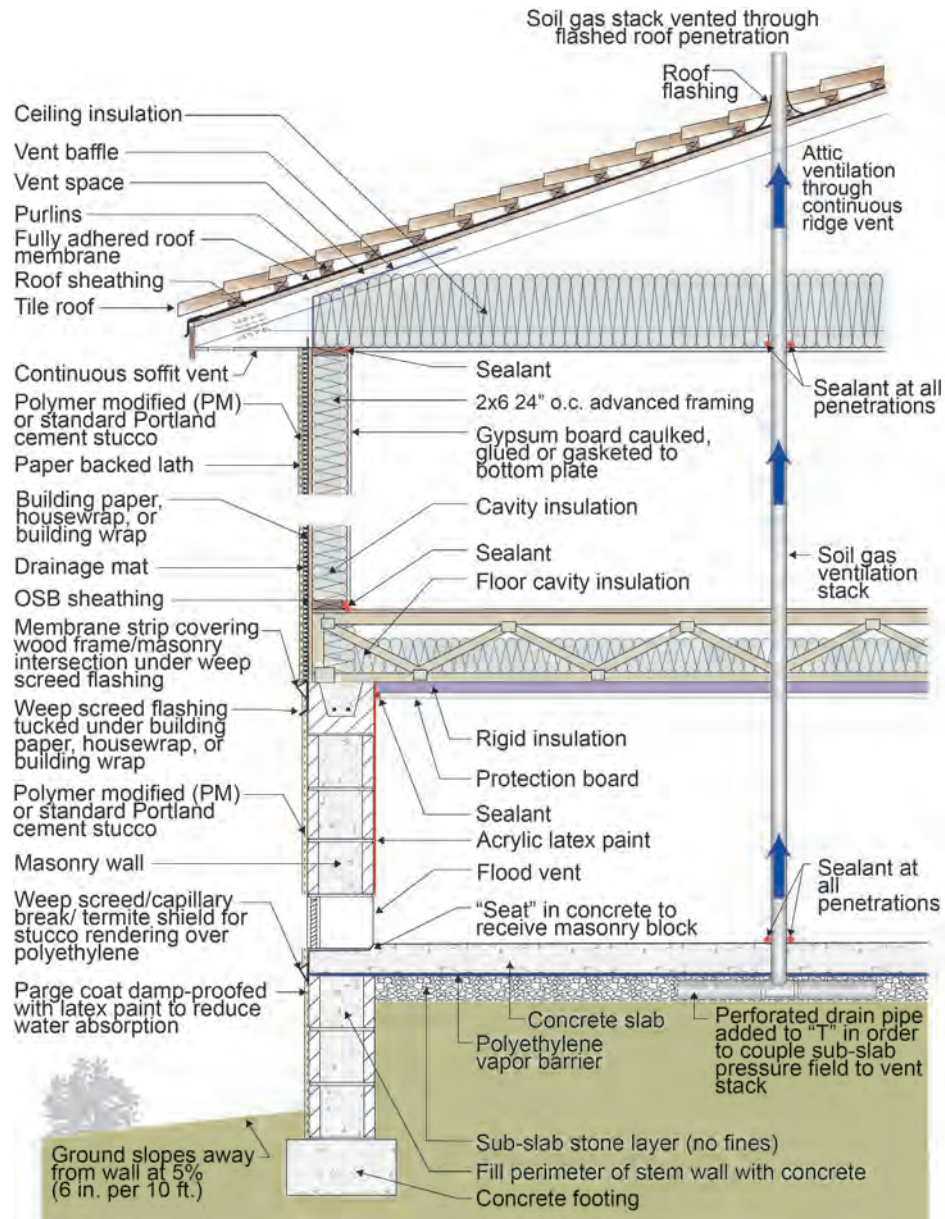
Raised Slab



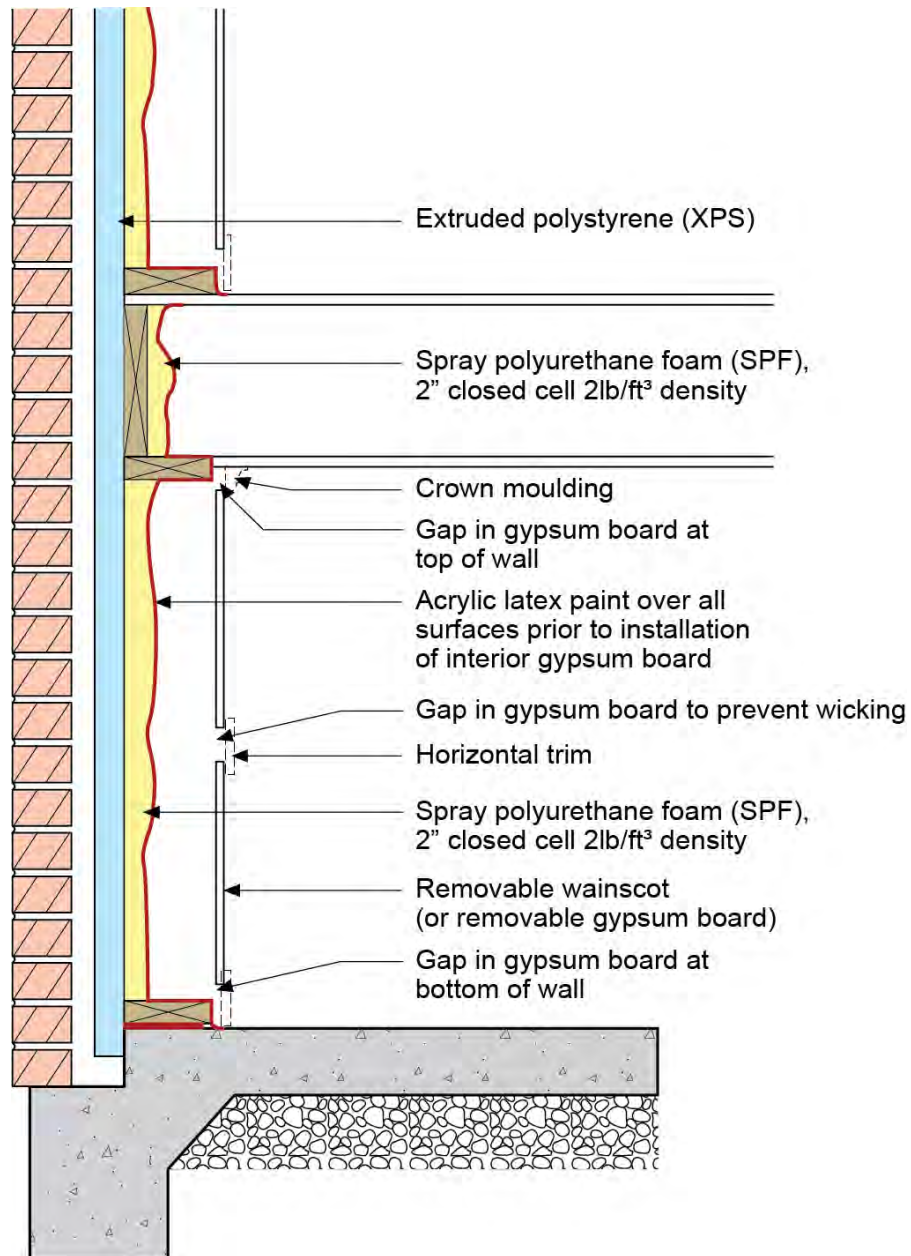


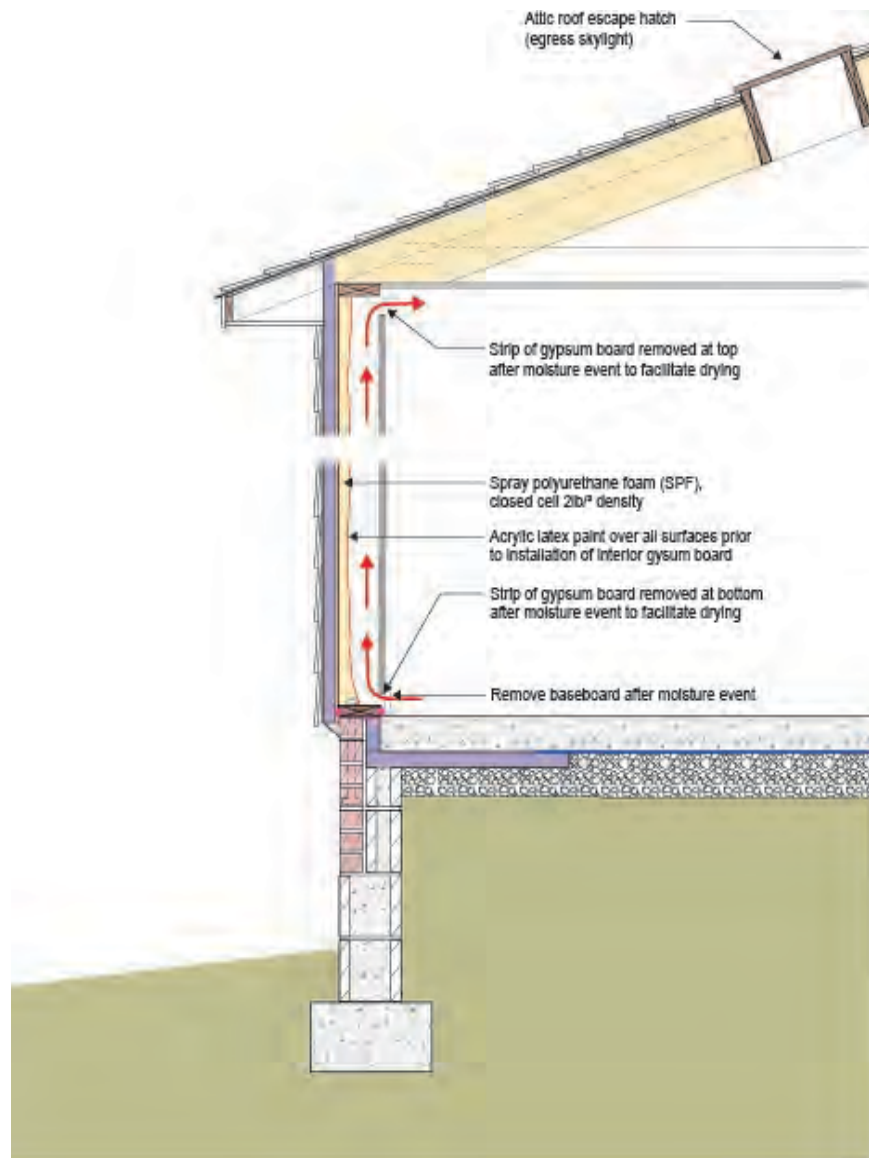


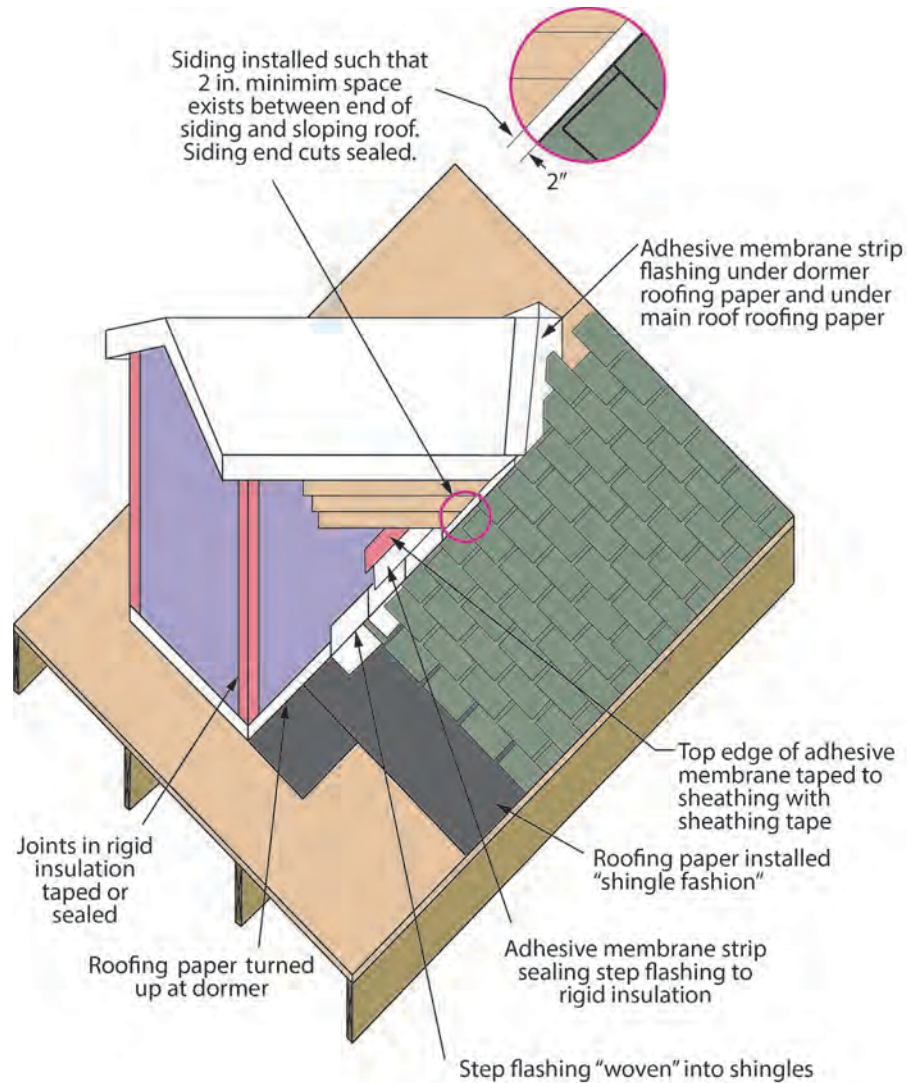












Note: Layering cut away in this figure shown for clarity, not as recommendation for installation sequencing

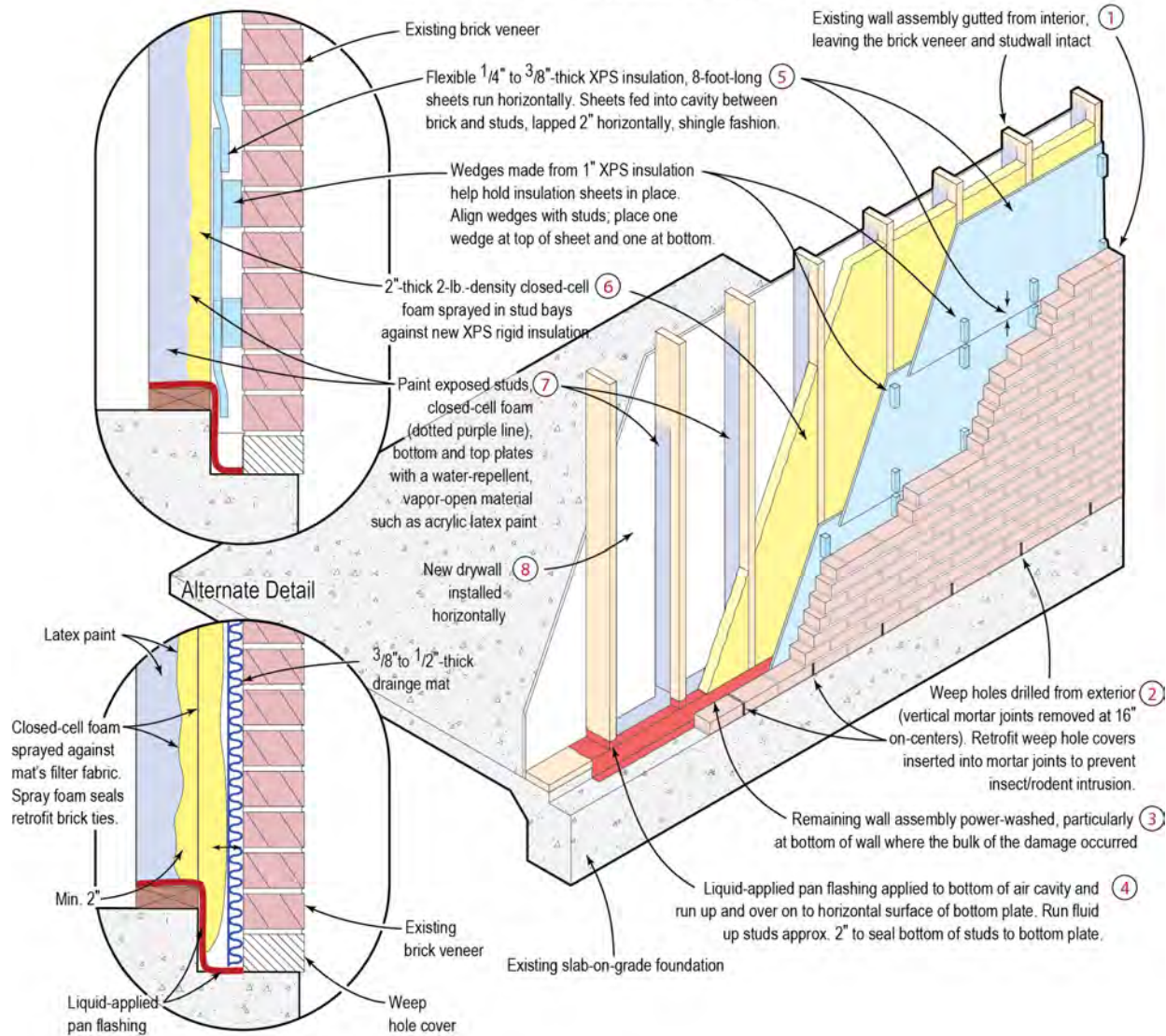
Dry...Don't Die

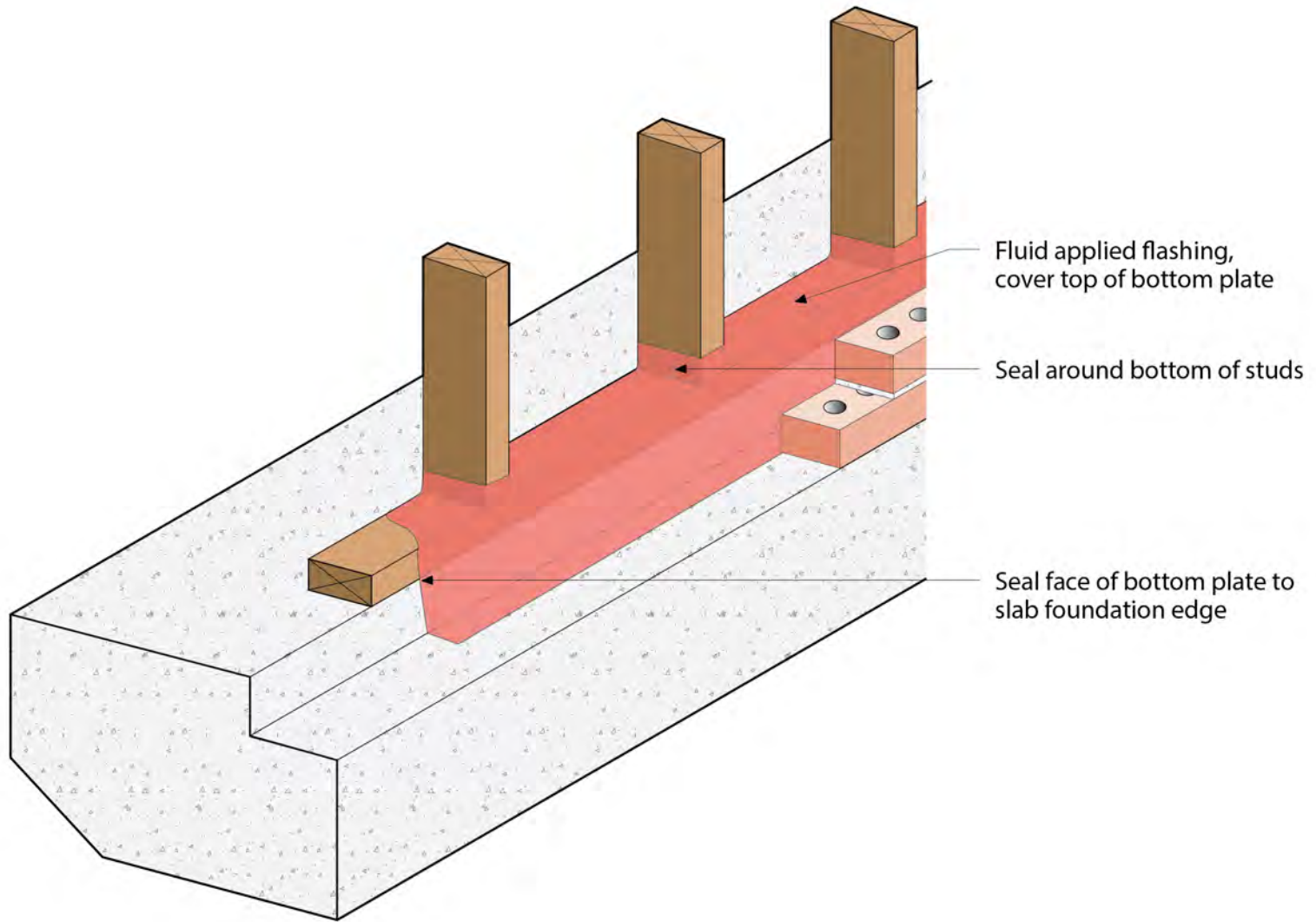
Dry...Don't Die
Wash, Rinse and Dry





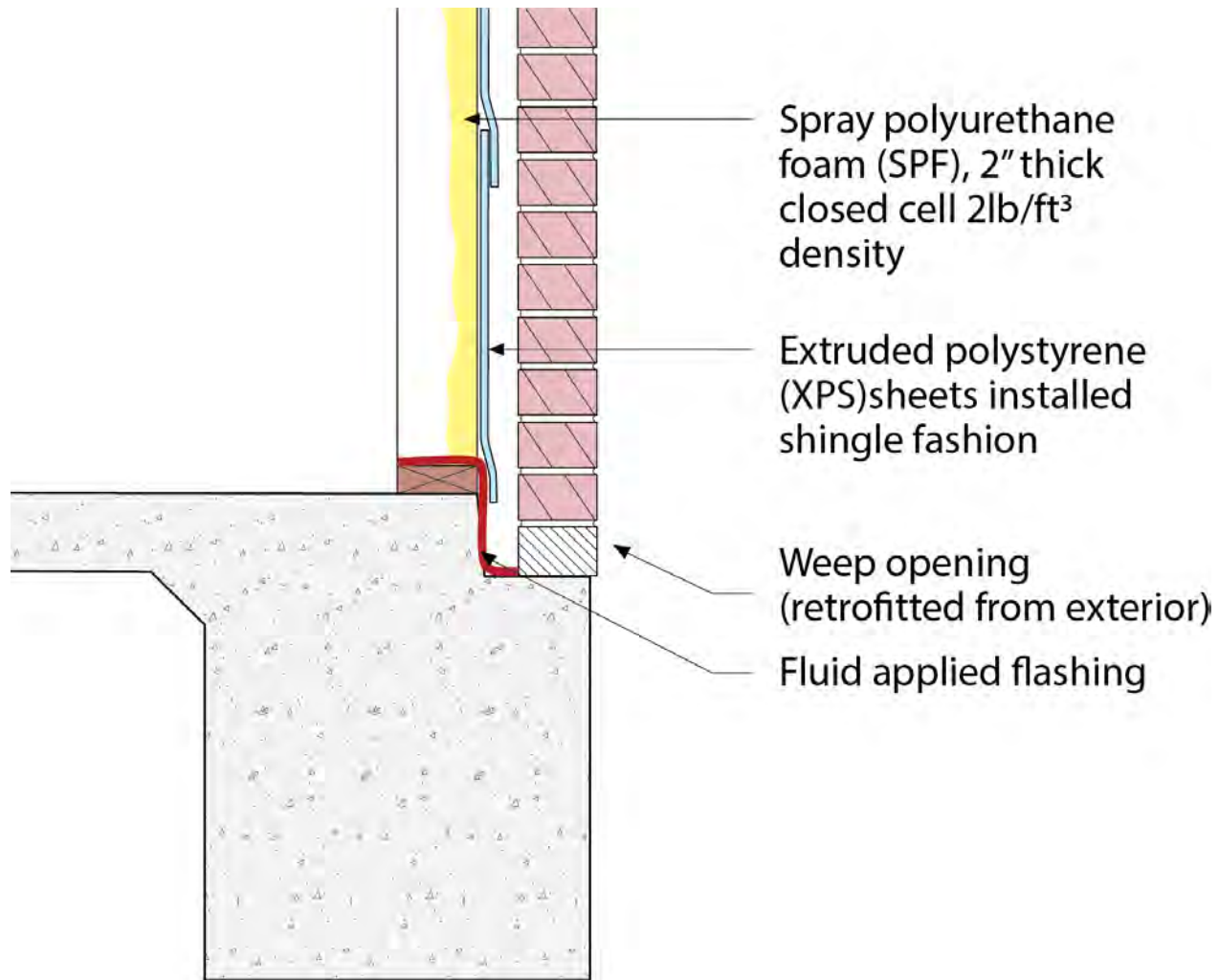
Flood-Tolerant Wall Reconstruction





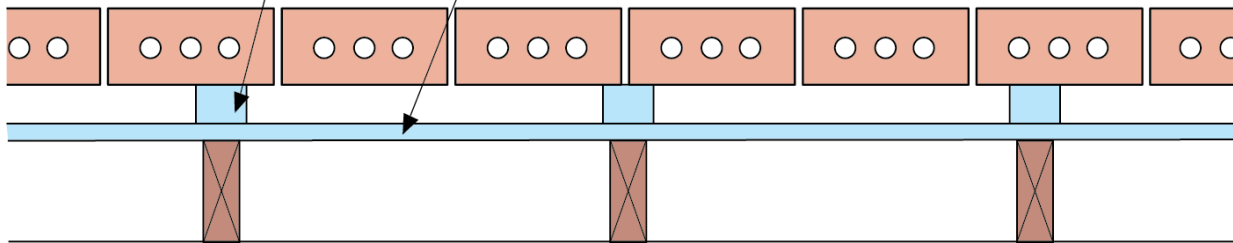
Dry...Don't Die

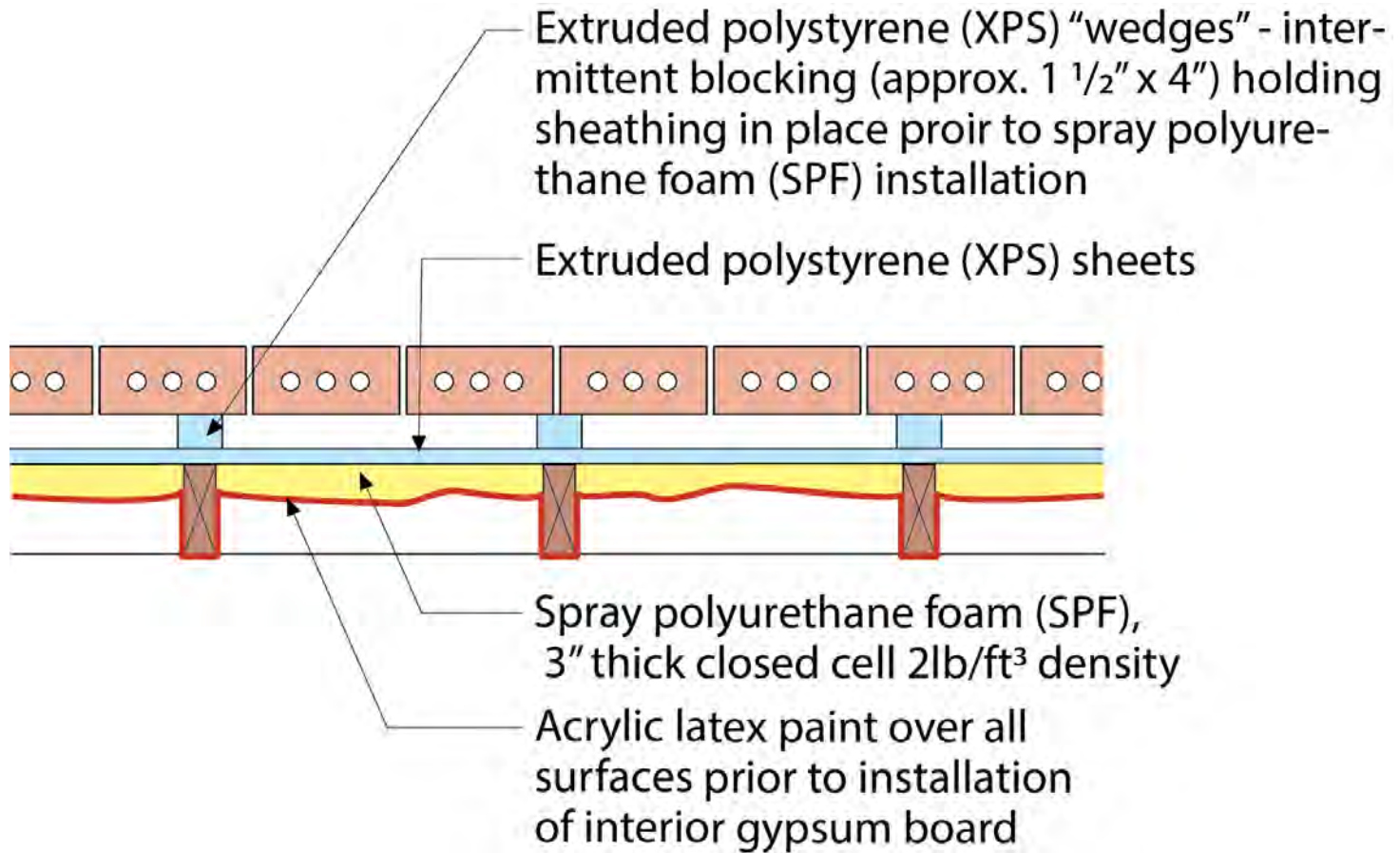
Dry...Don't Die
Wash, Rinse and Dry

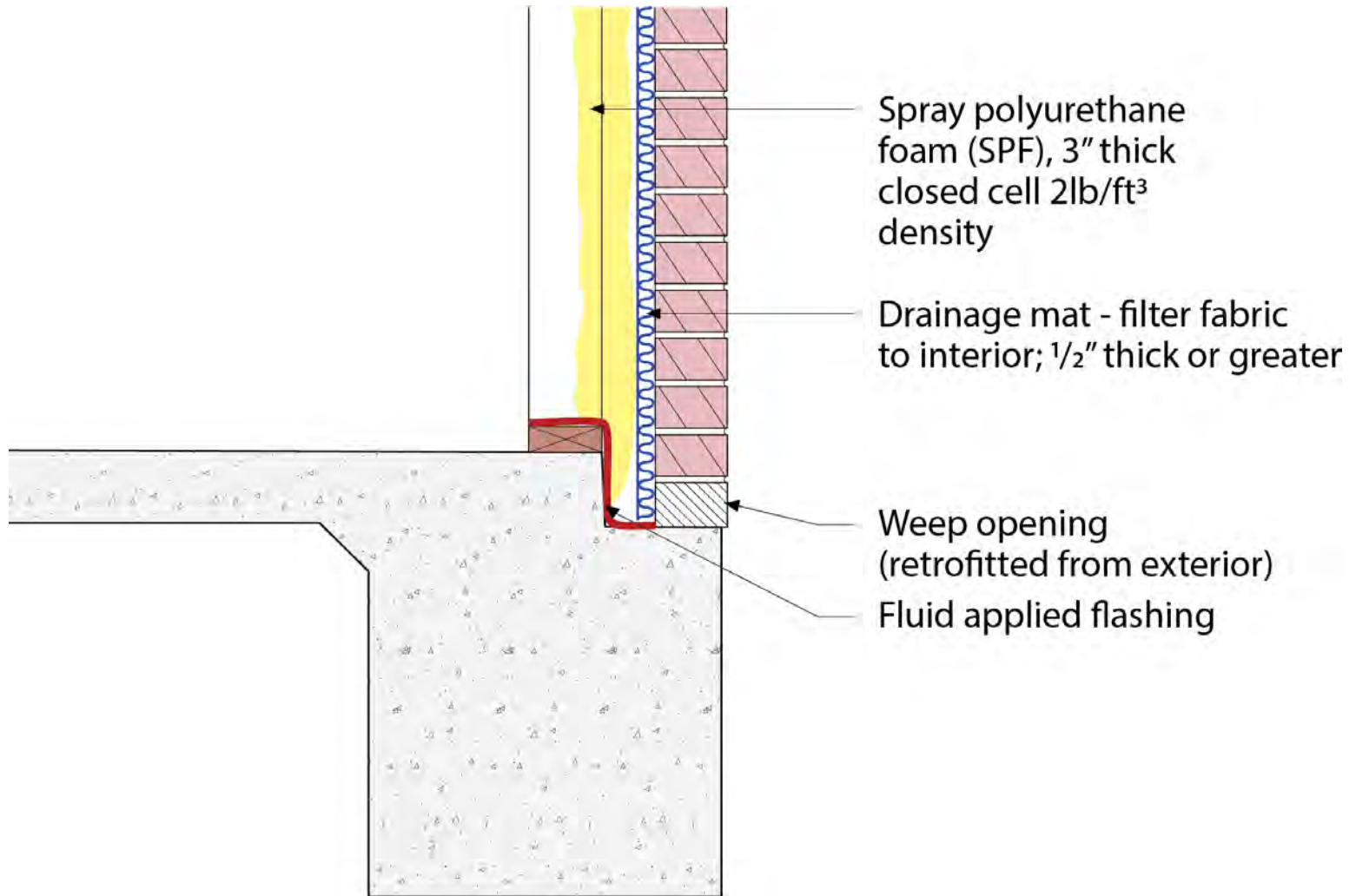


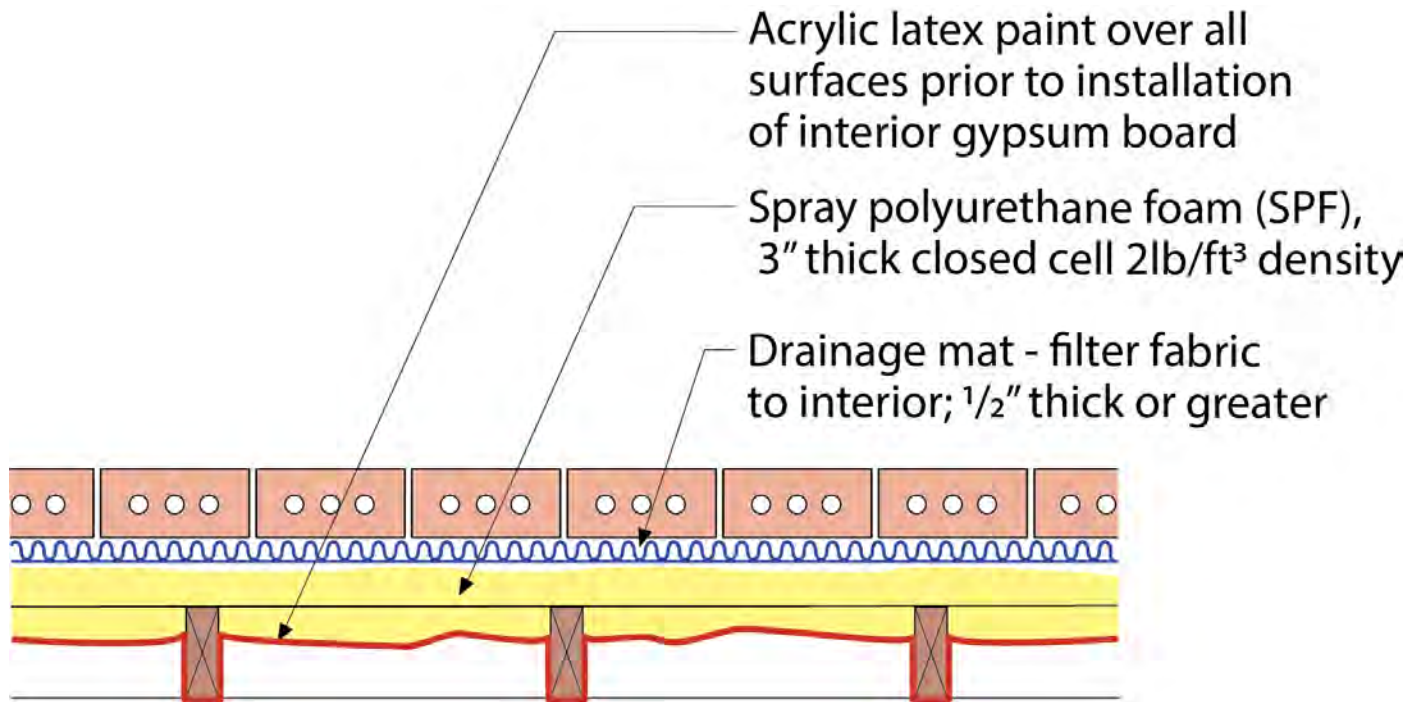
Extruded polystyrene (XPS) "wedges" - intermittent blocking (approx. 1 1/2" x 4") holding sheathing in place prior to spray polyurethane foam (SPF) installation

Extruded polystyrene (XPS) sheets









Existing brick ties

Acrylic latex paint over all surfaces prior to installation of interior gypsum board

Spray polyurethane foam (SPF), 3" thick closed cell 2lb/ft³ density

Drainage mat - filter fabric to interior; 1/2" thick or greater

Fluid applied flashing

