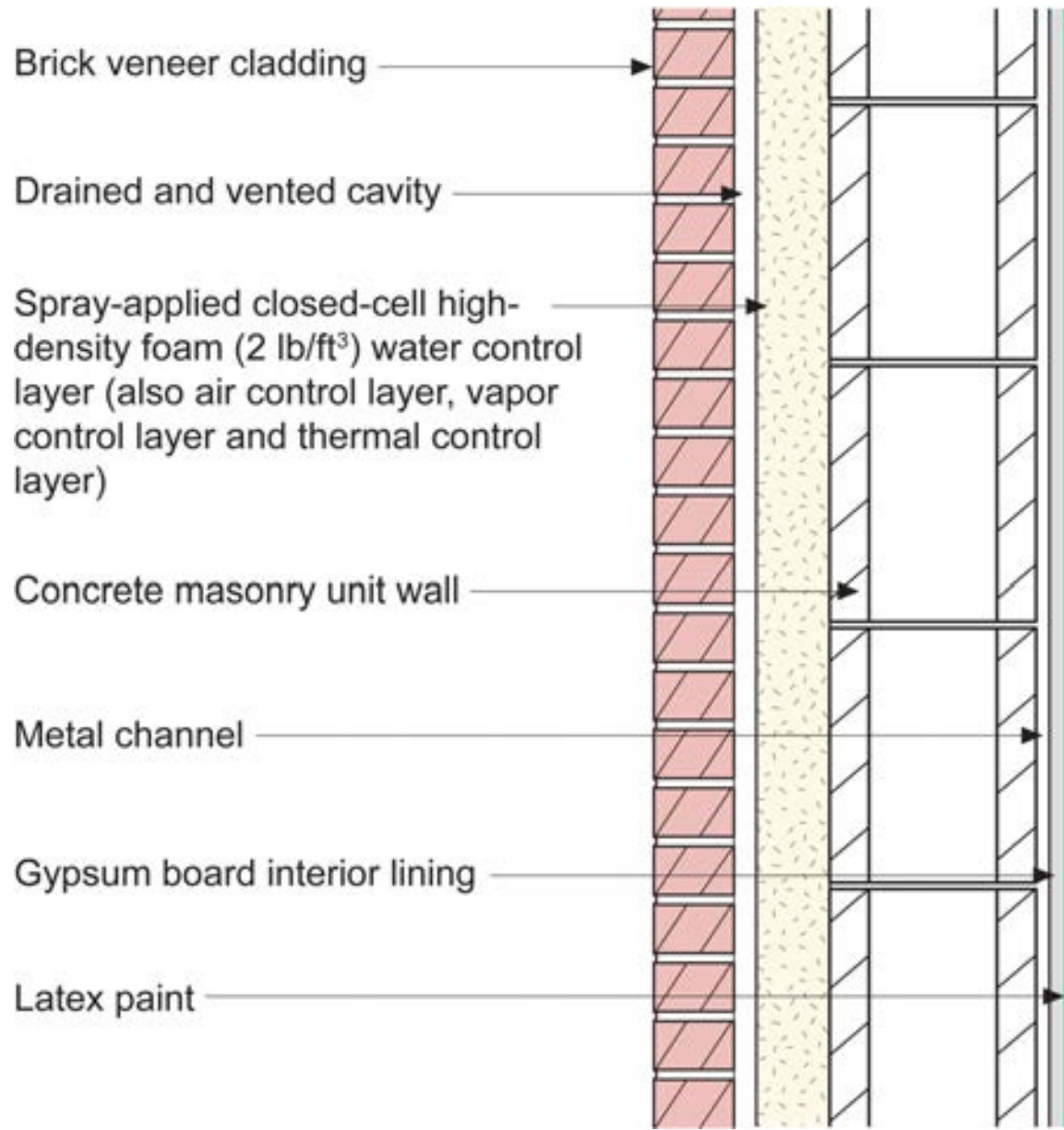
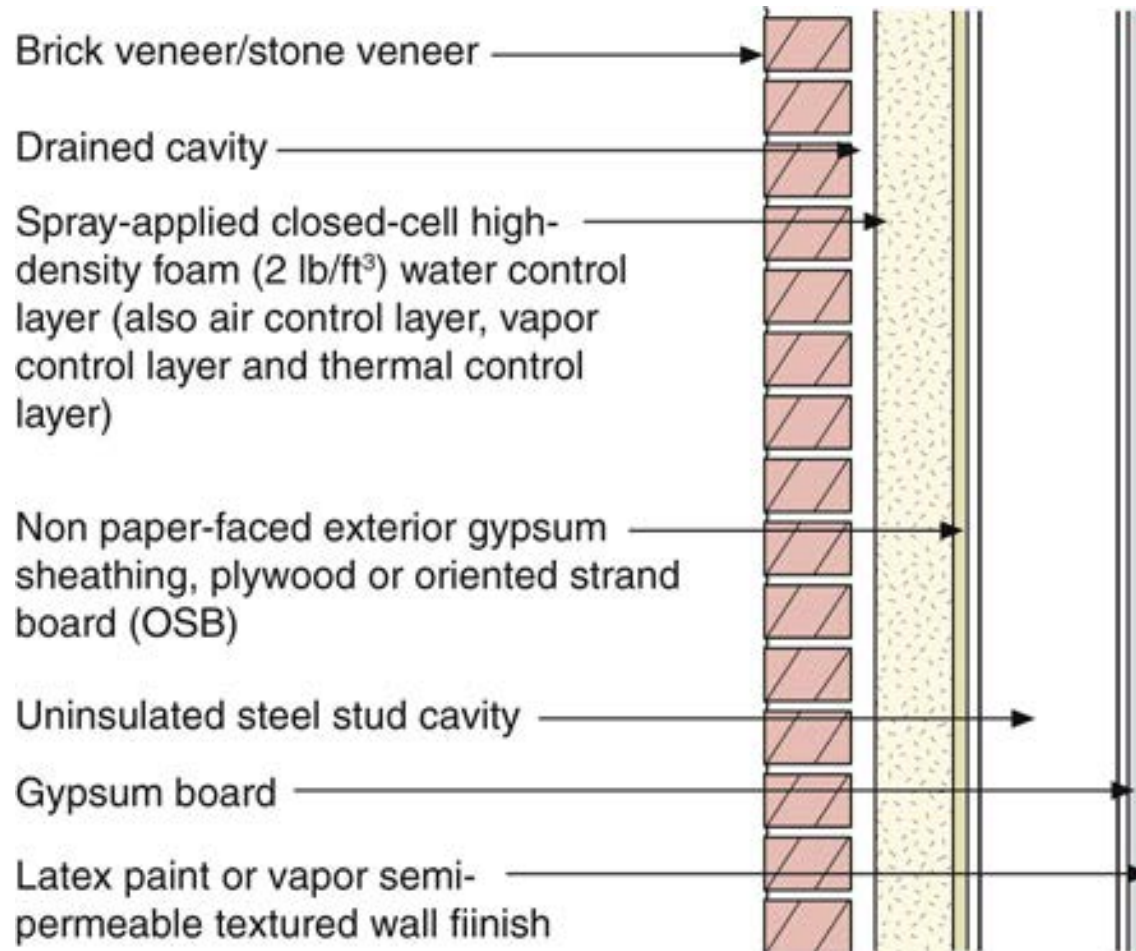


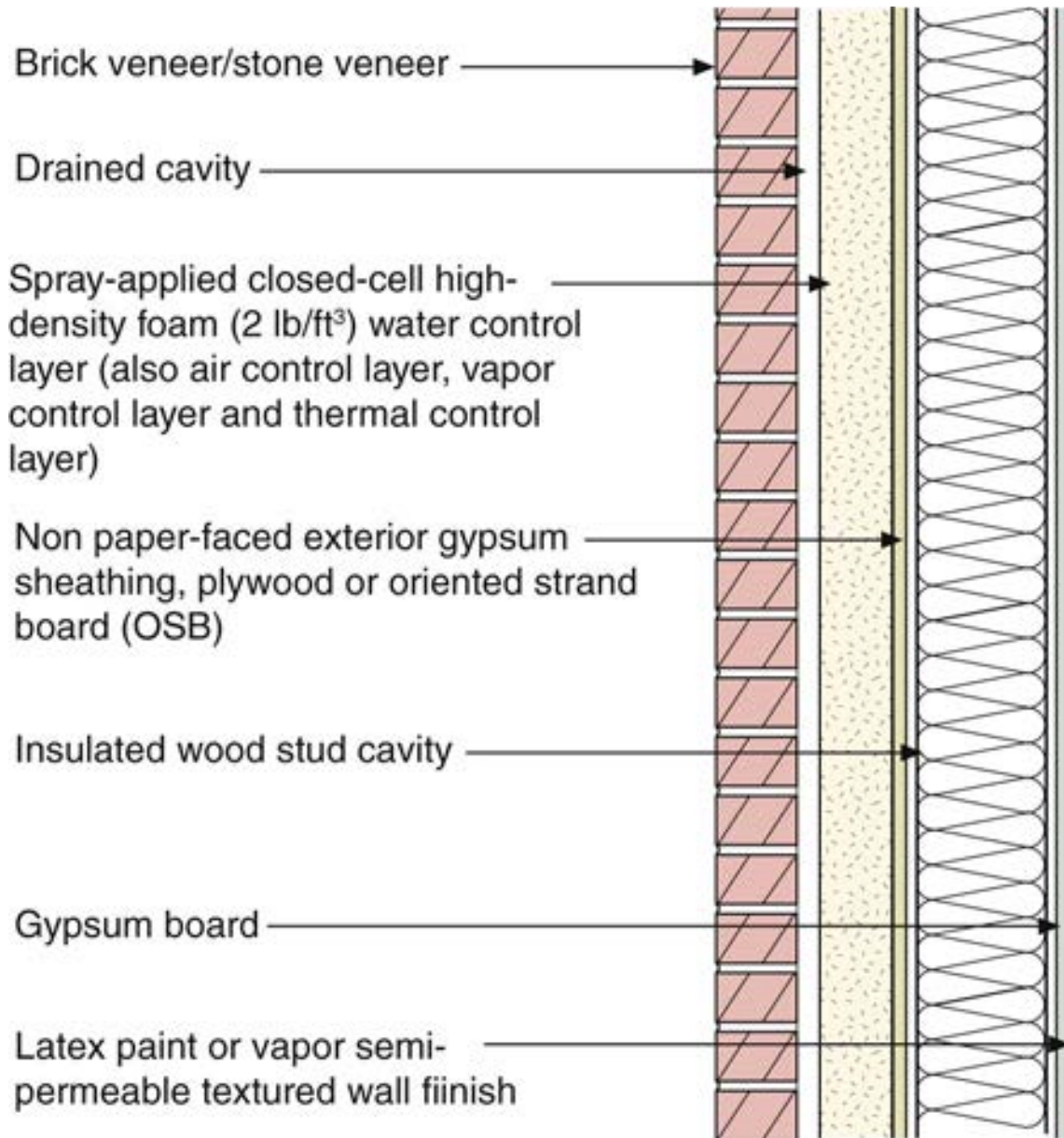
Bayer Building Sciences

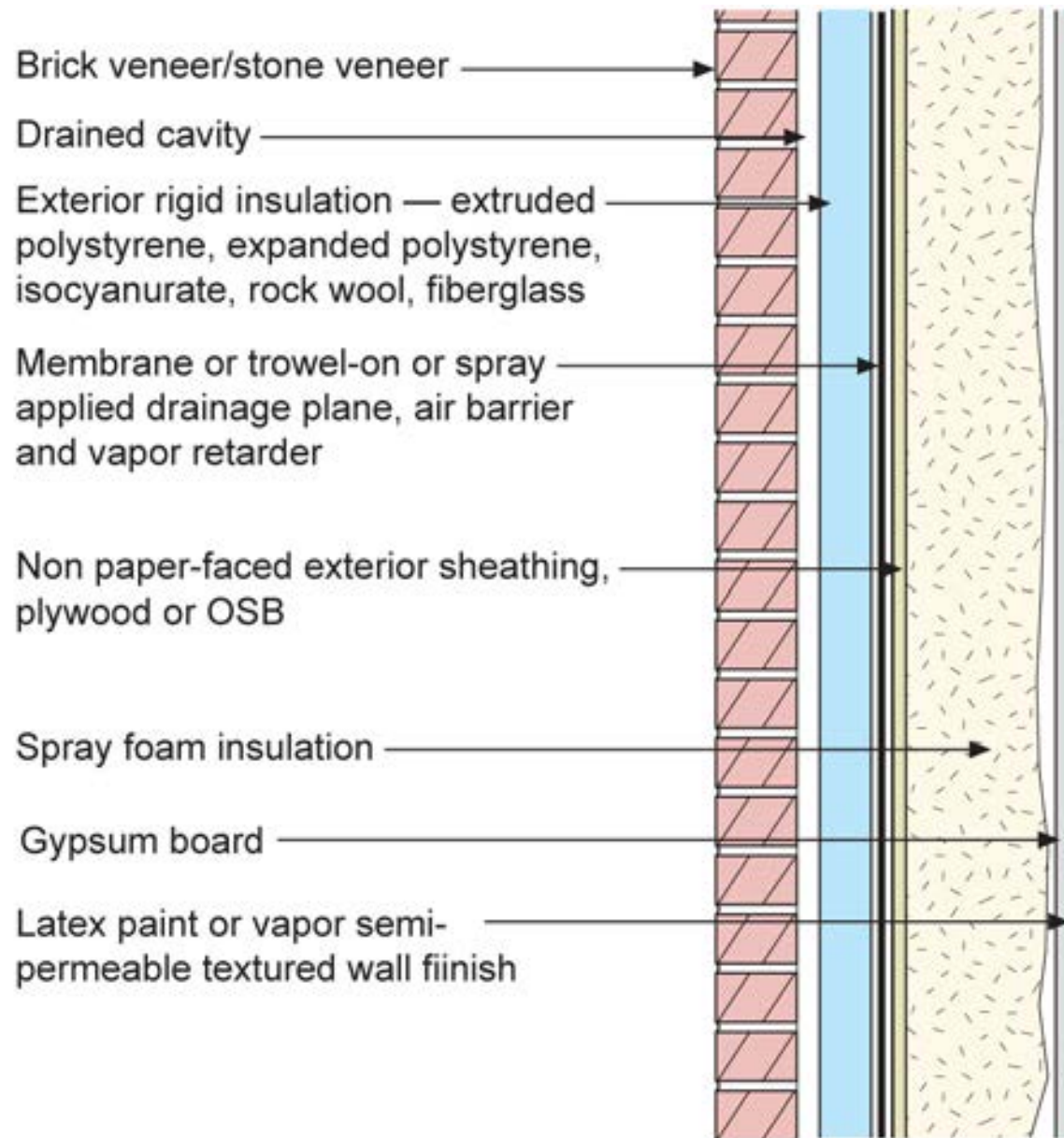
Spray Polyurethane Foam

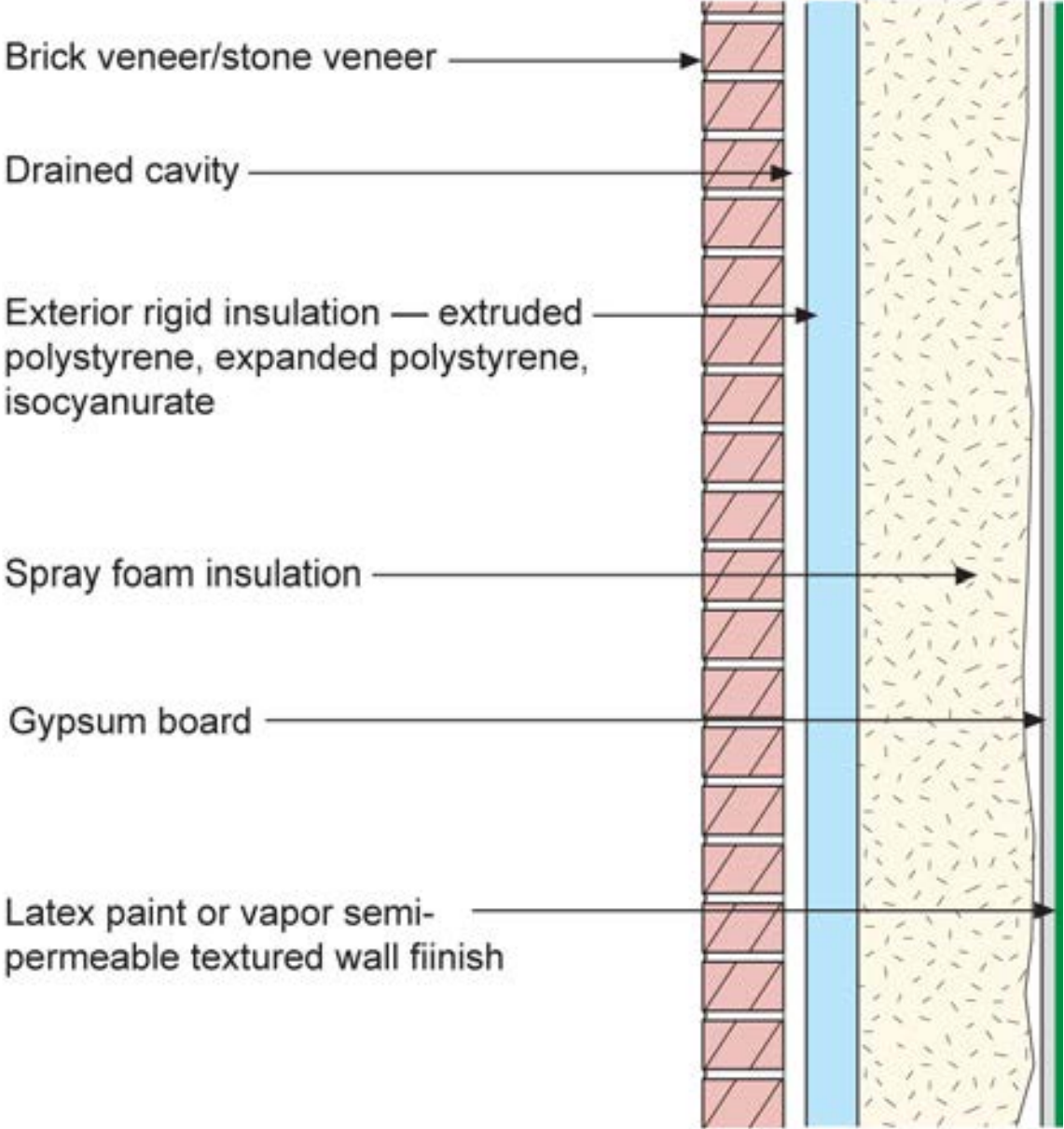
Building Enclosures











Brick veneer/stone veneer

Drained cavity

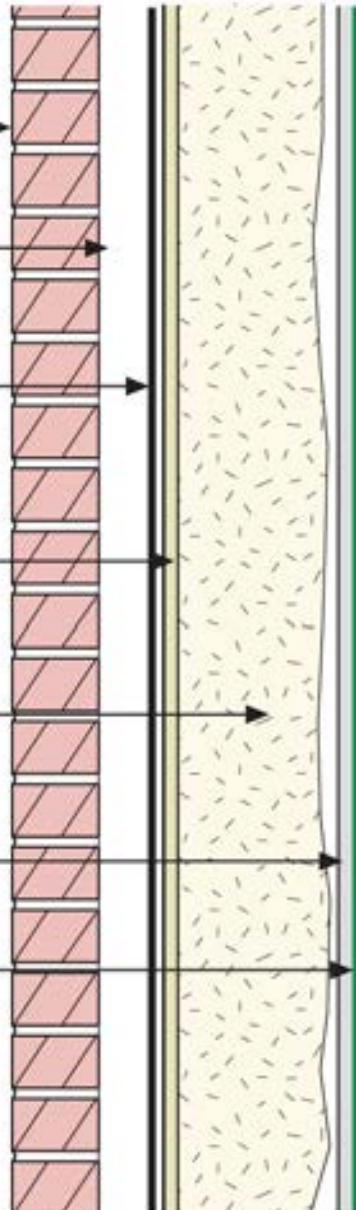
Drainage plane

Non paper-faced exterior sheathing,
plywood or OSB

Spray foam insulation

Gypsum board

Latex paint or vapor semi-
permeable textured wall finish





















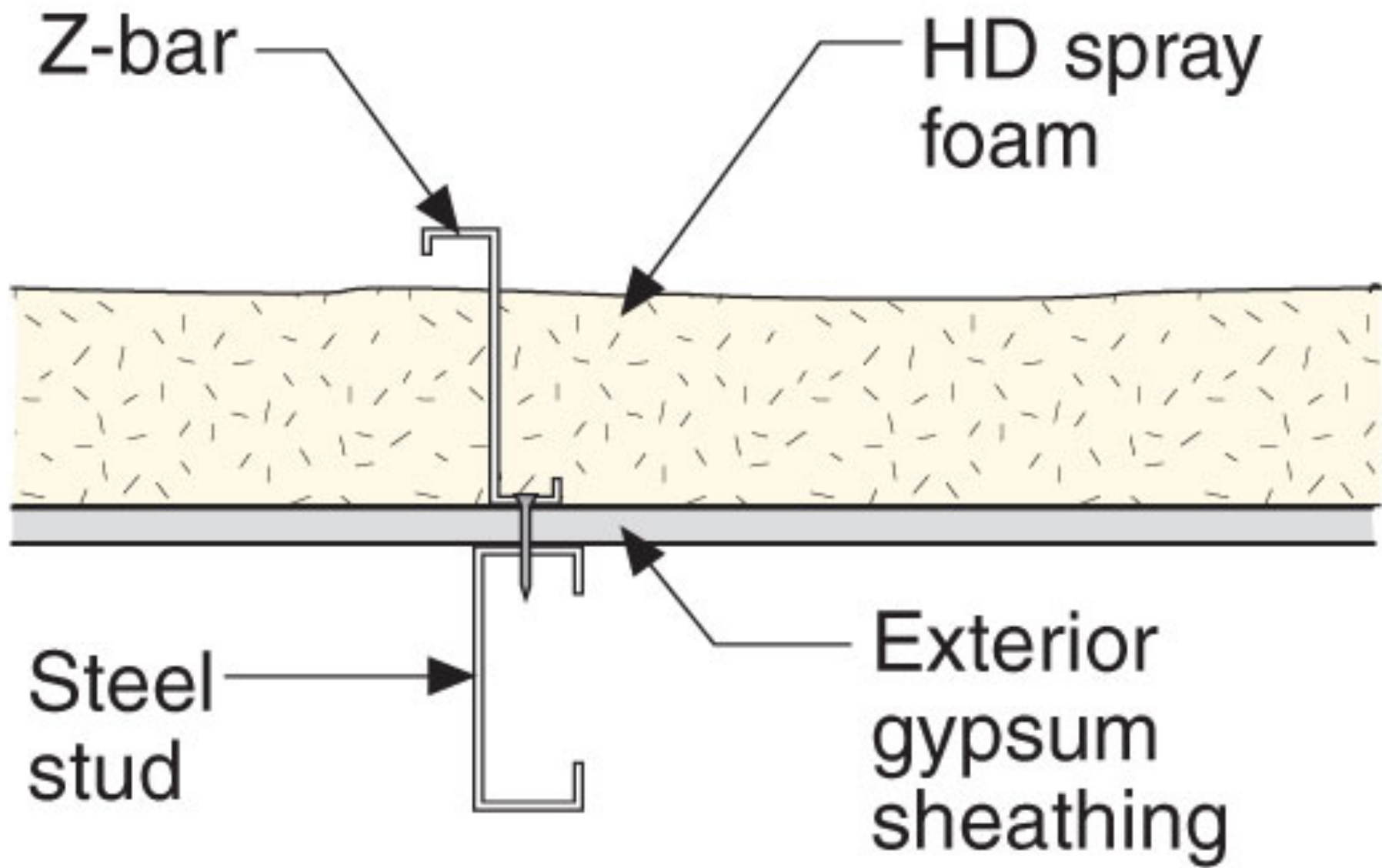


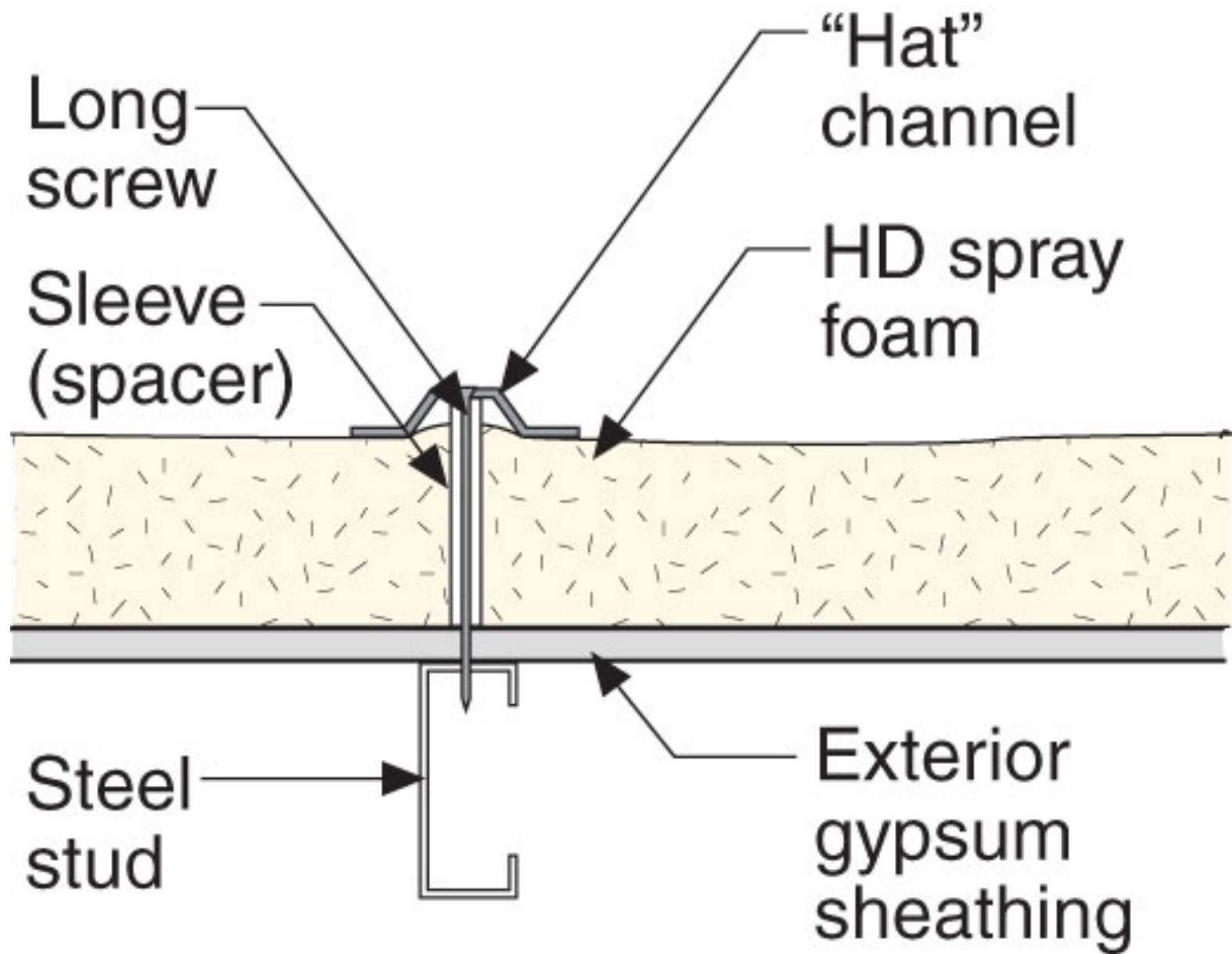


















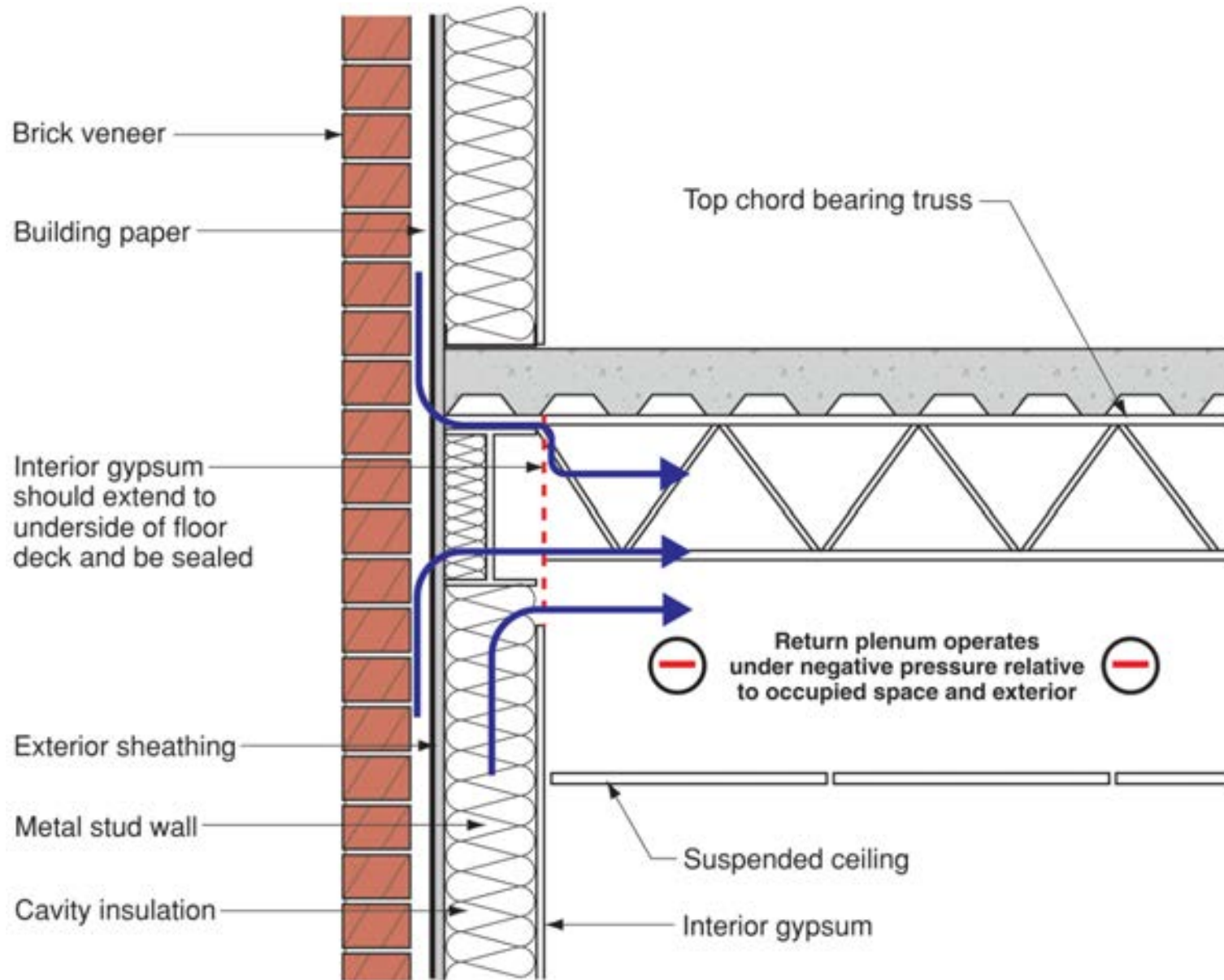












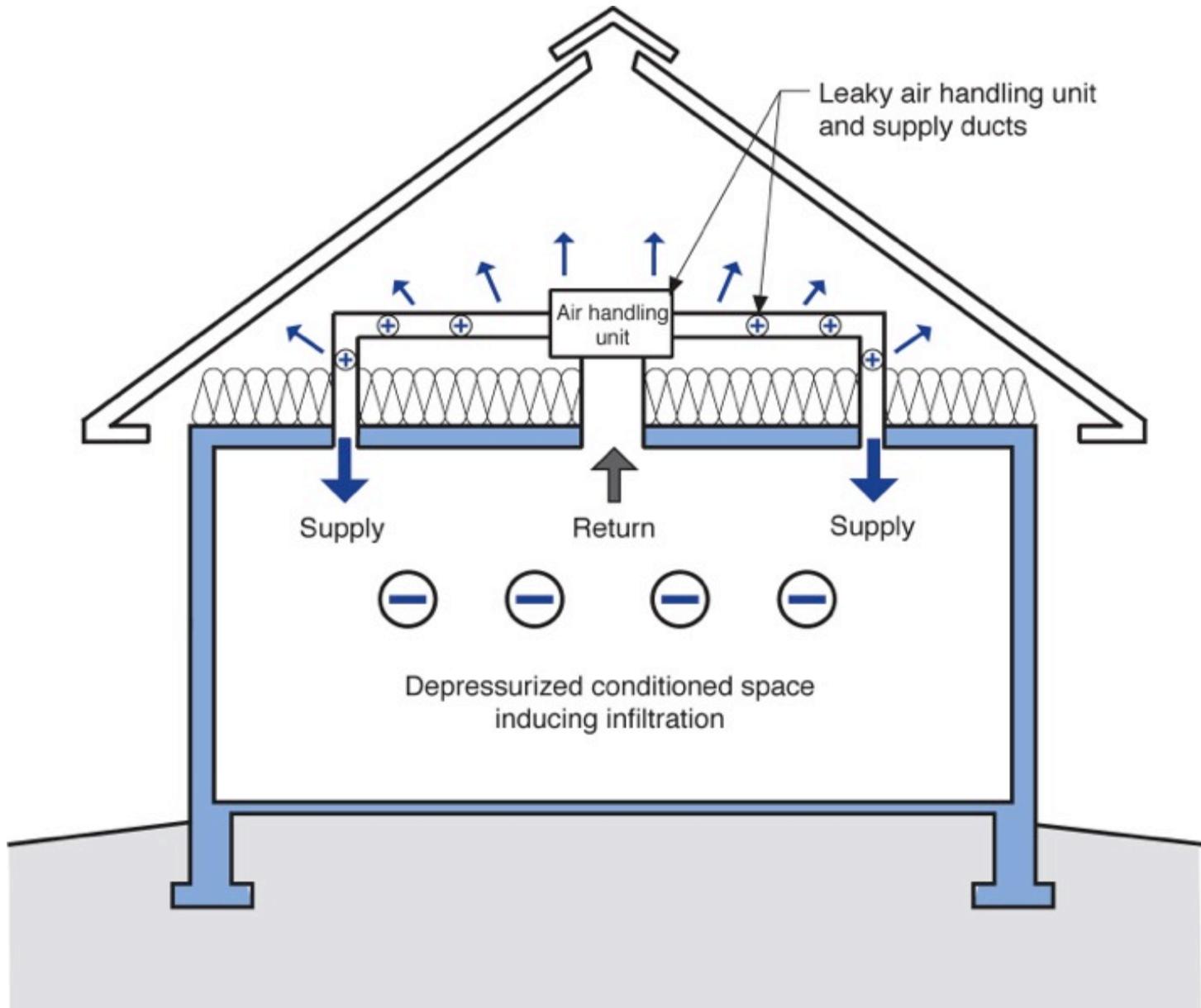


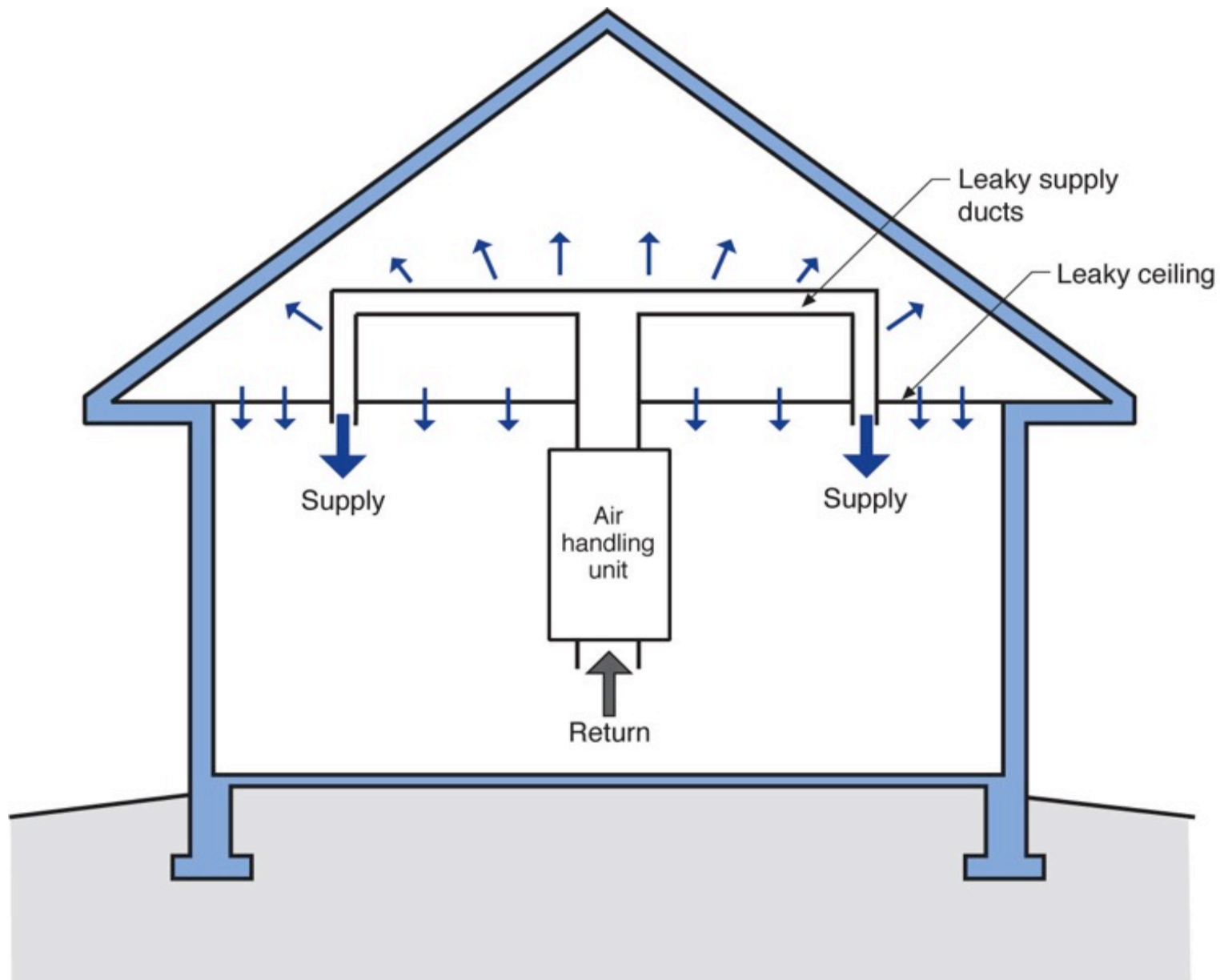




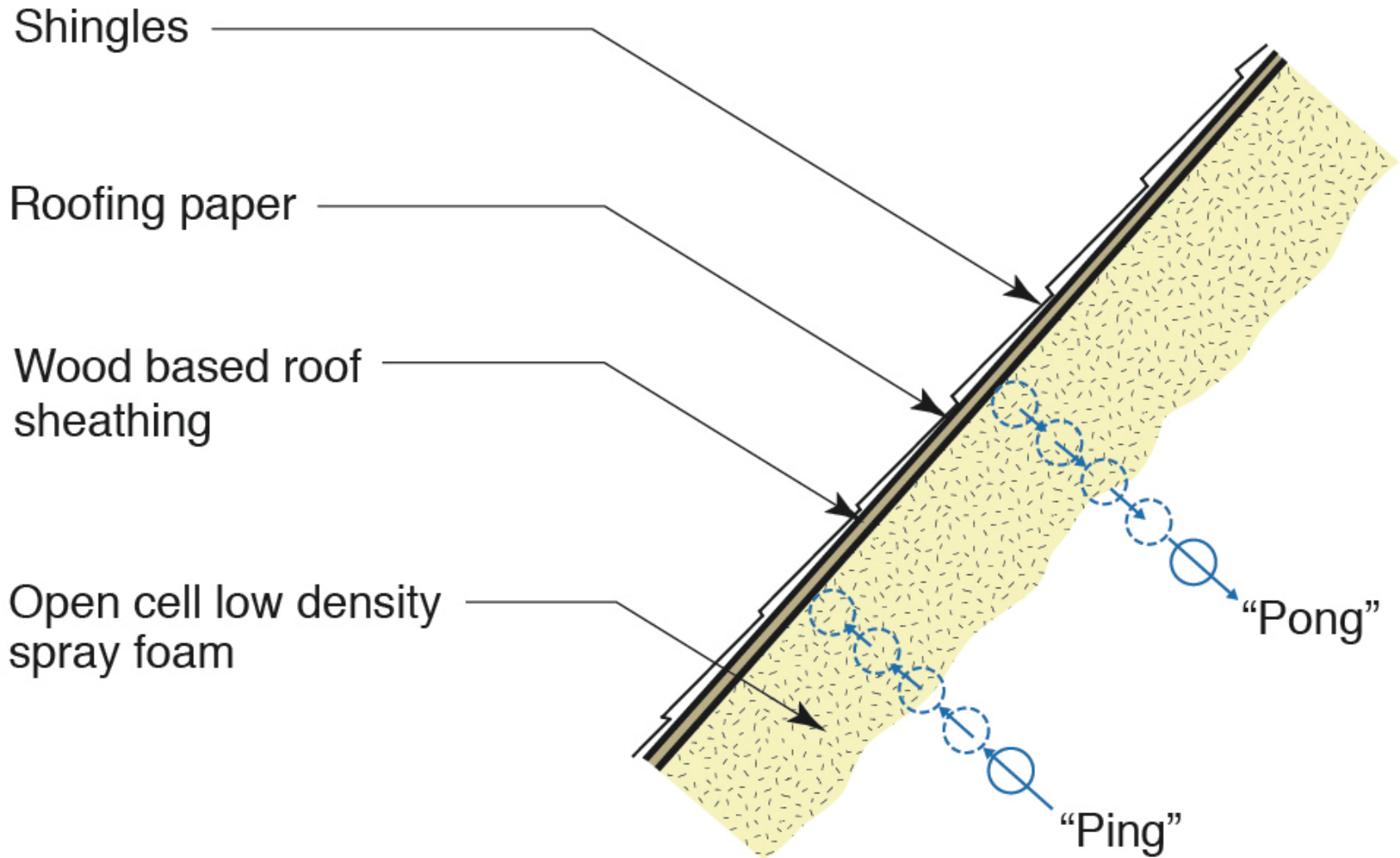


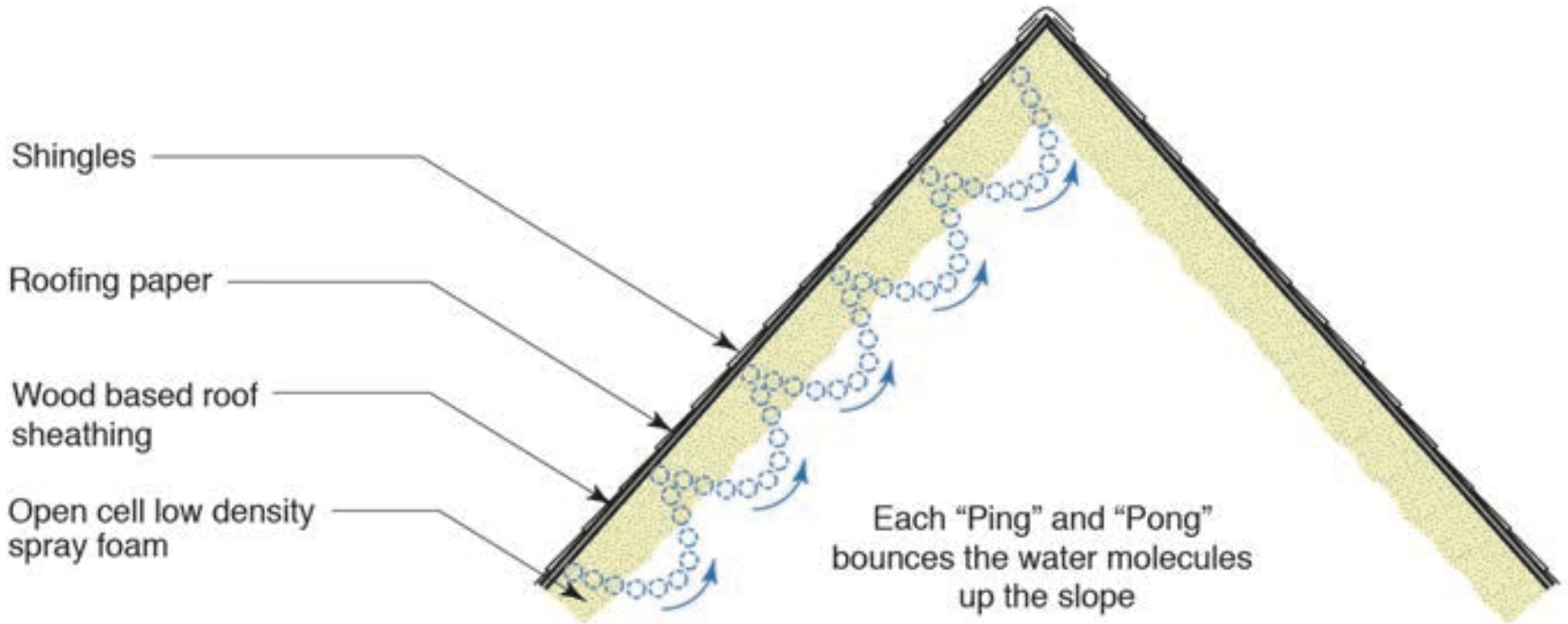


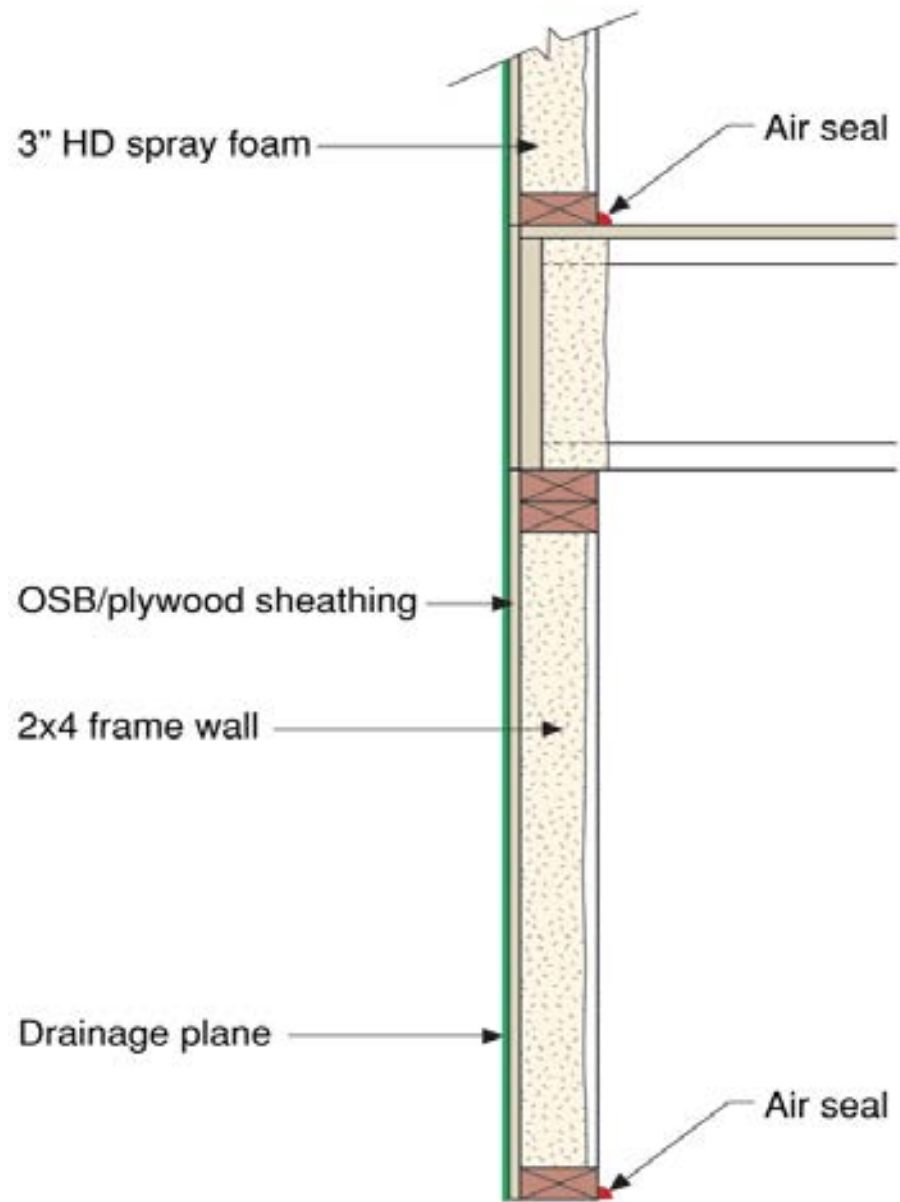












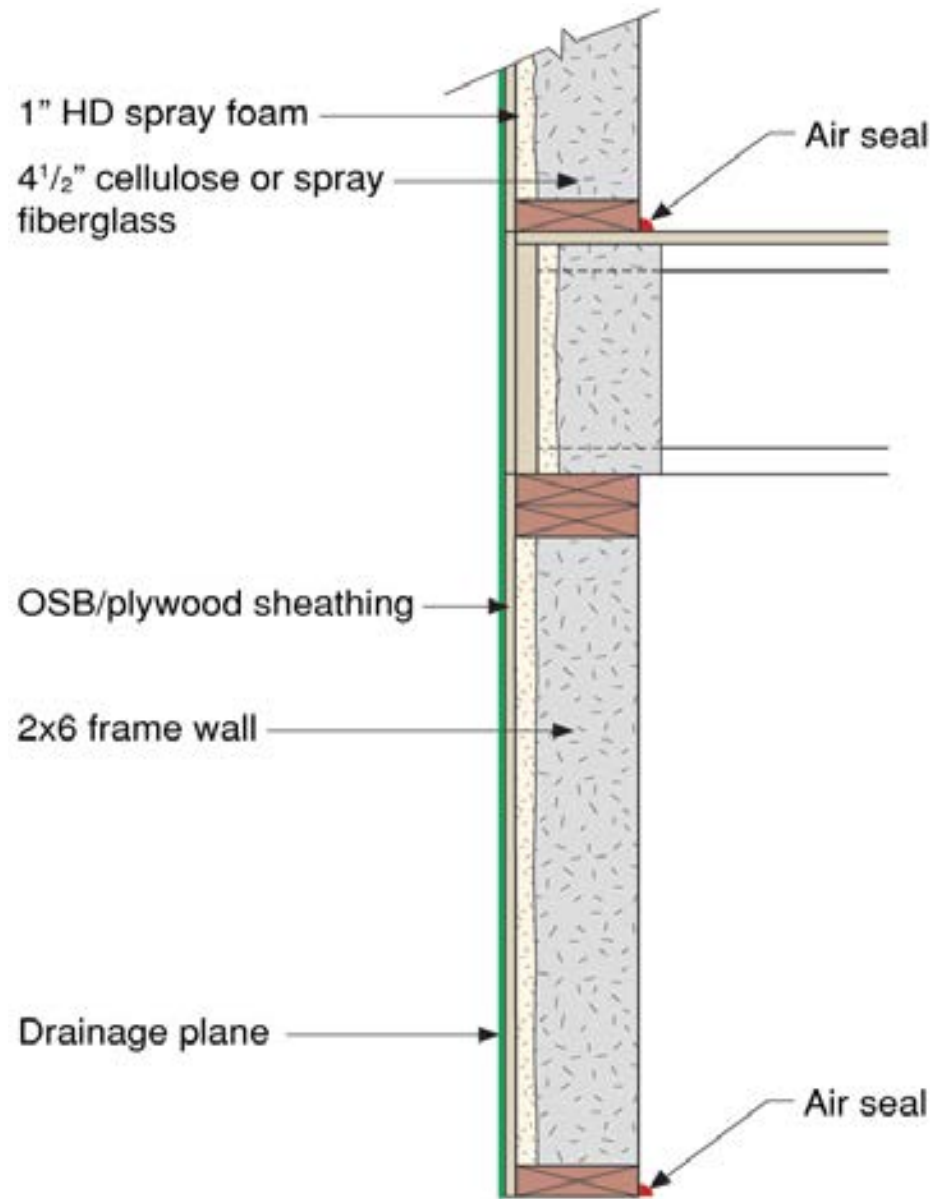


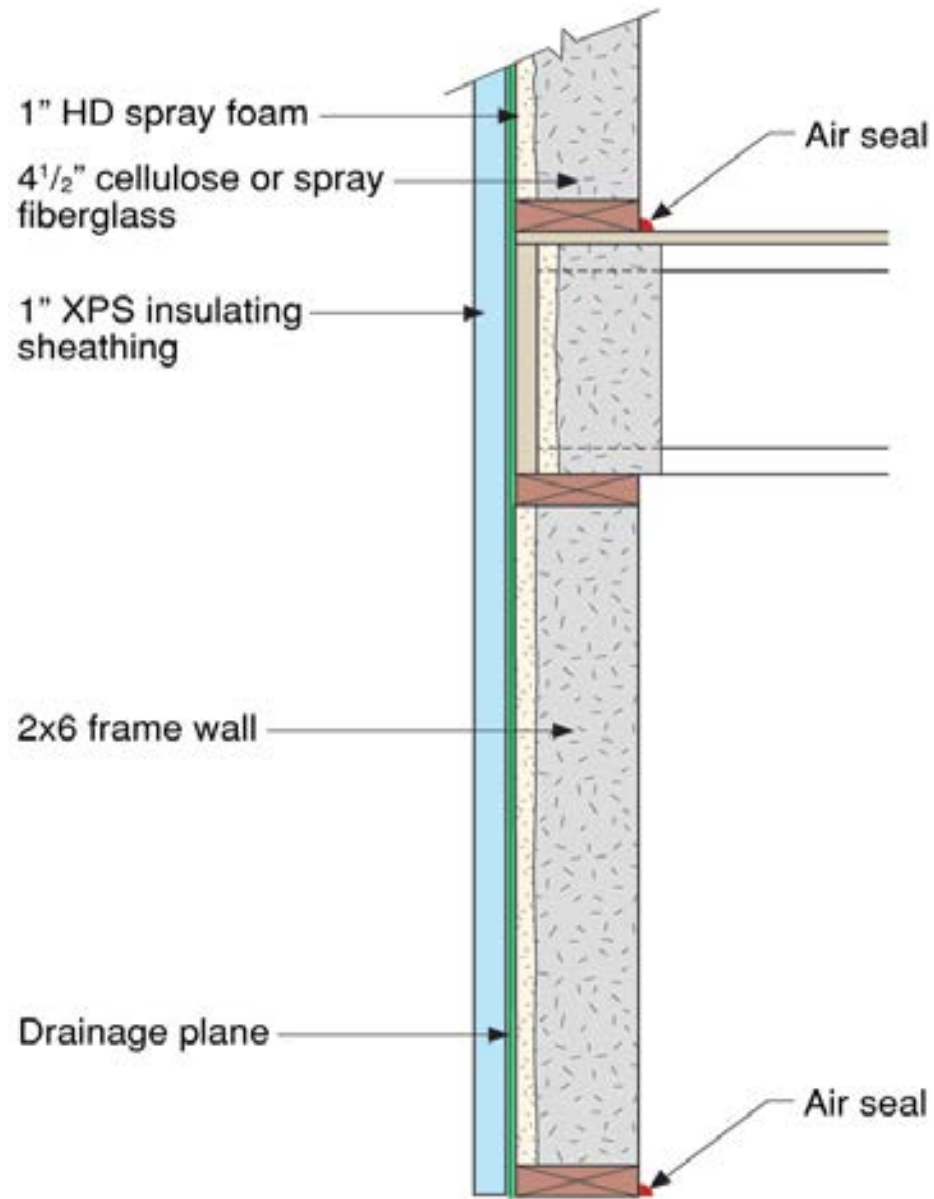


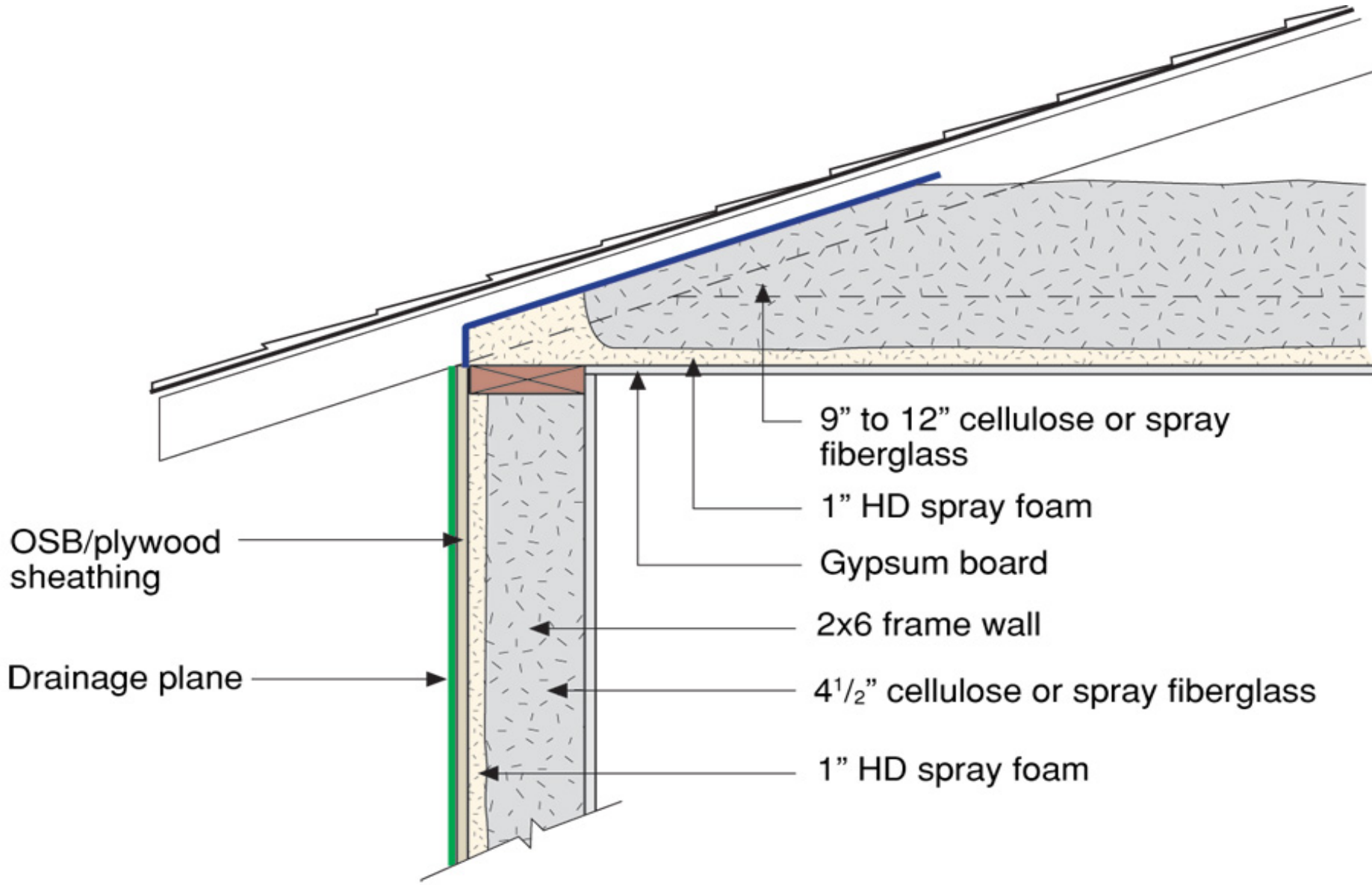


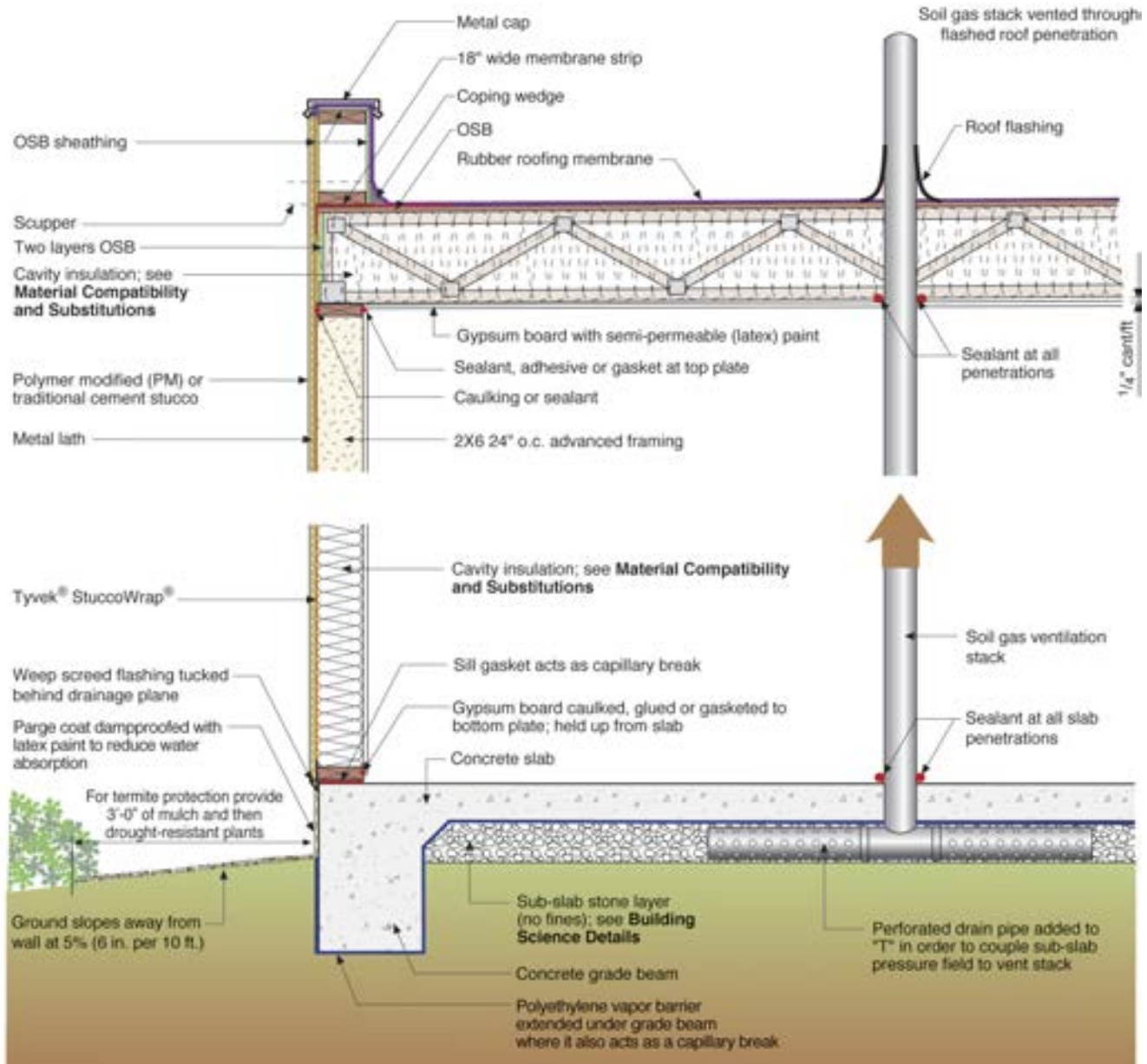


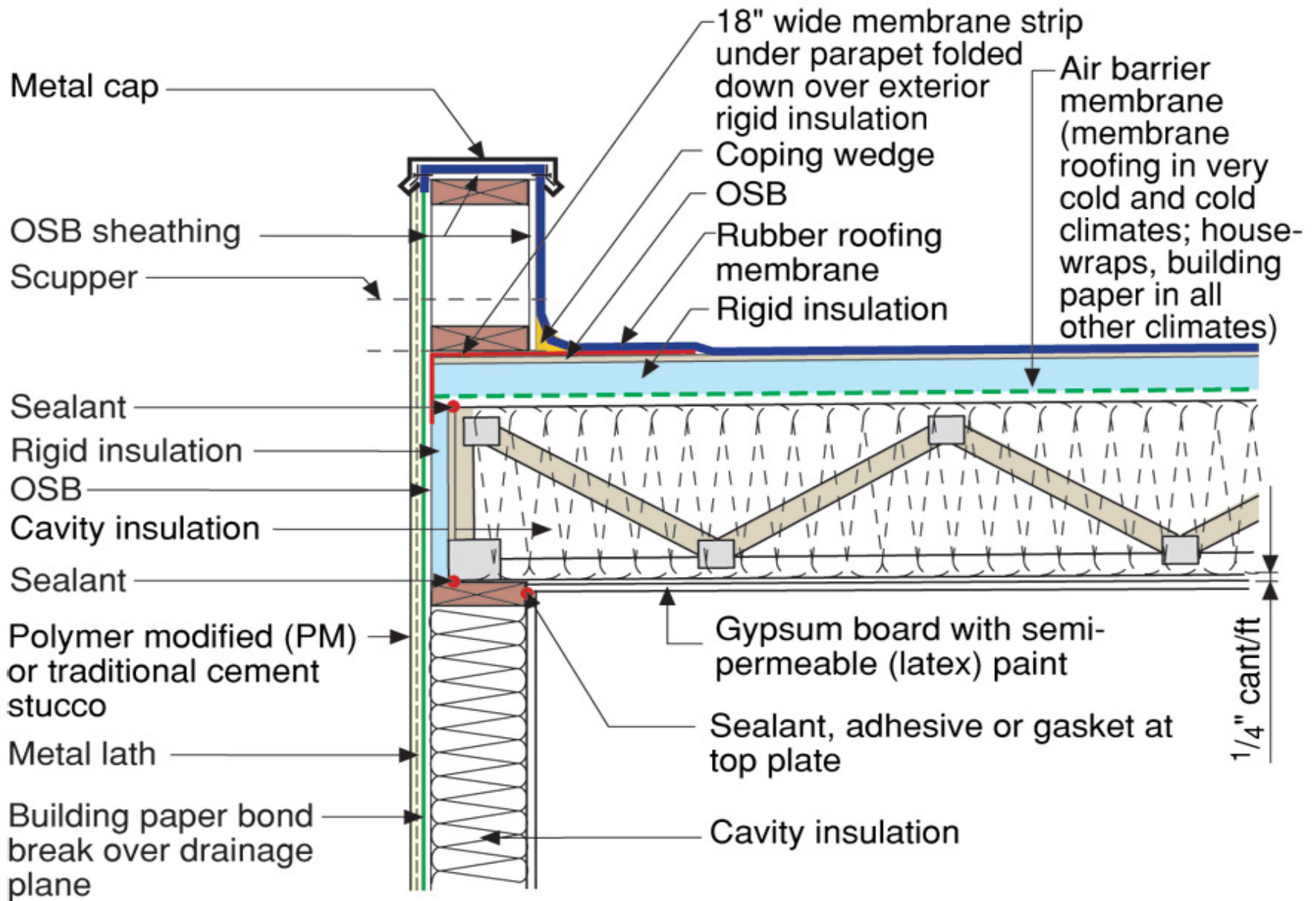


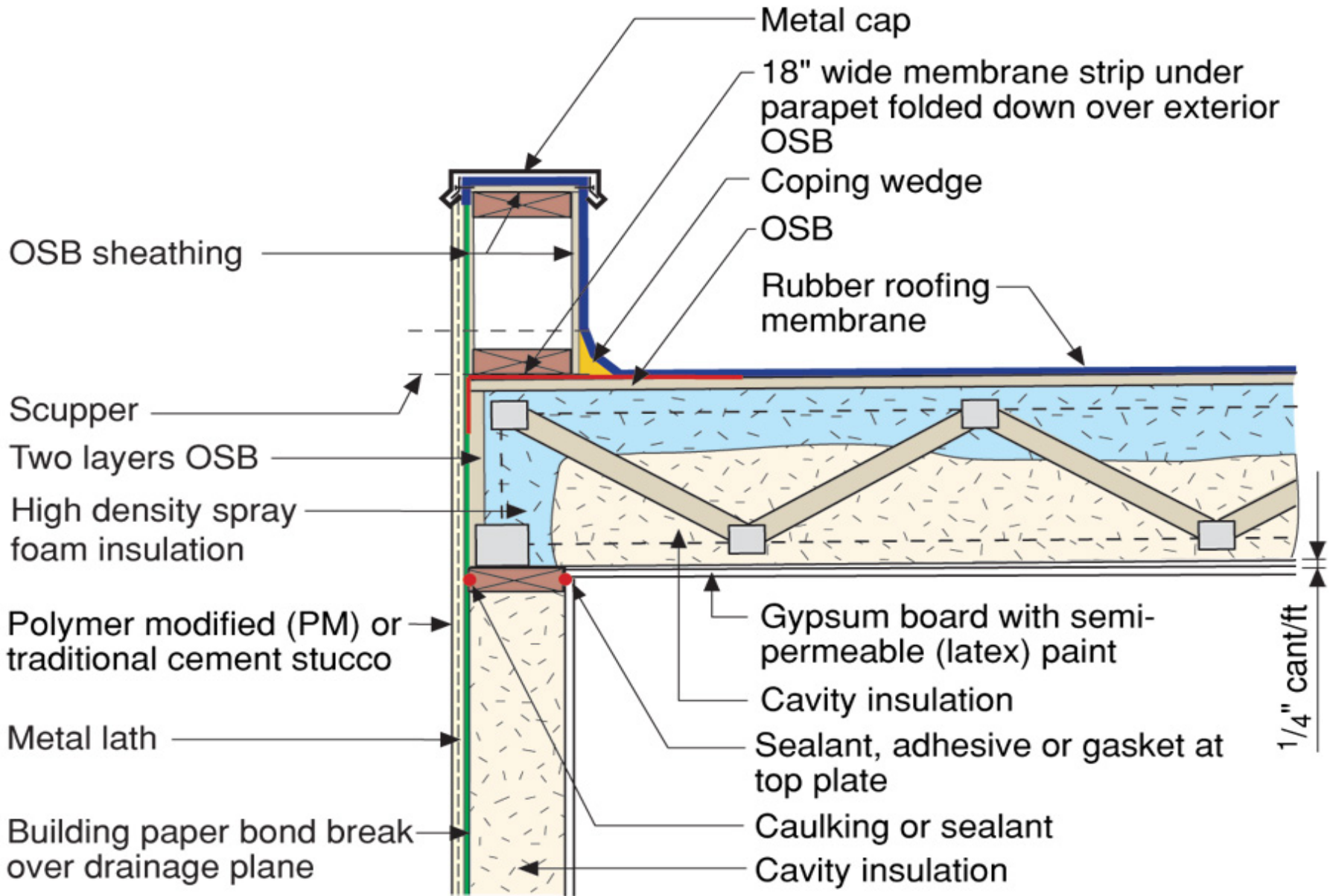




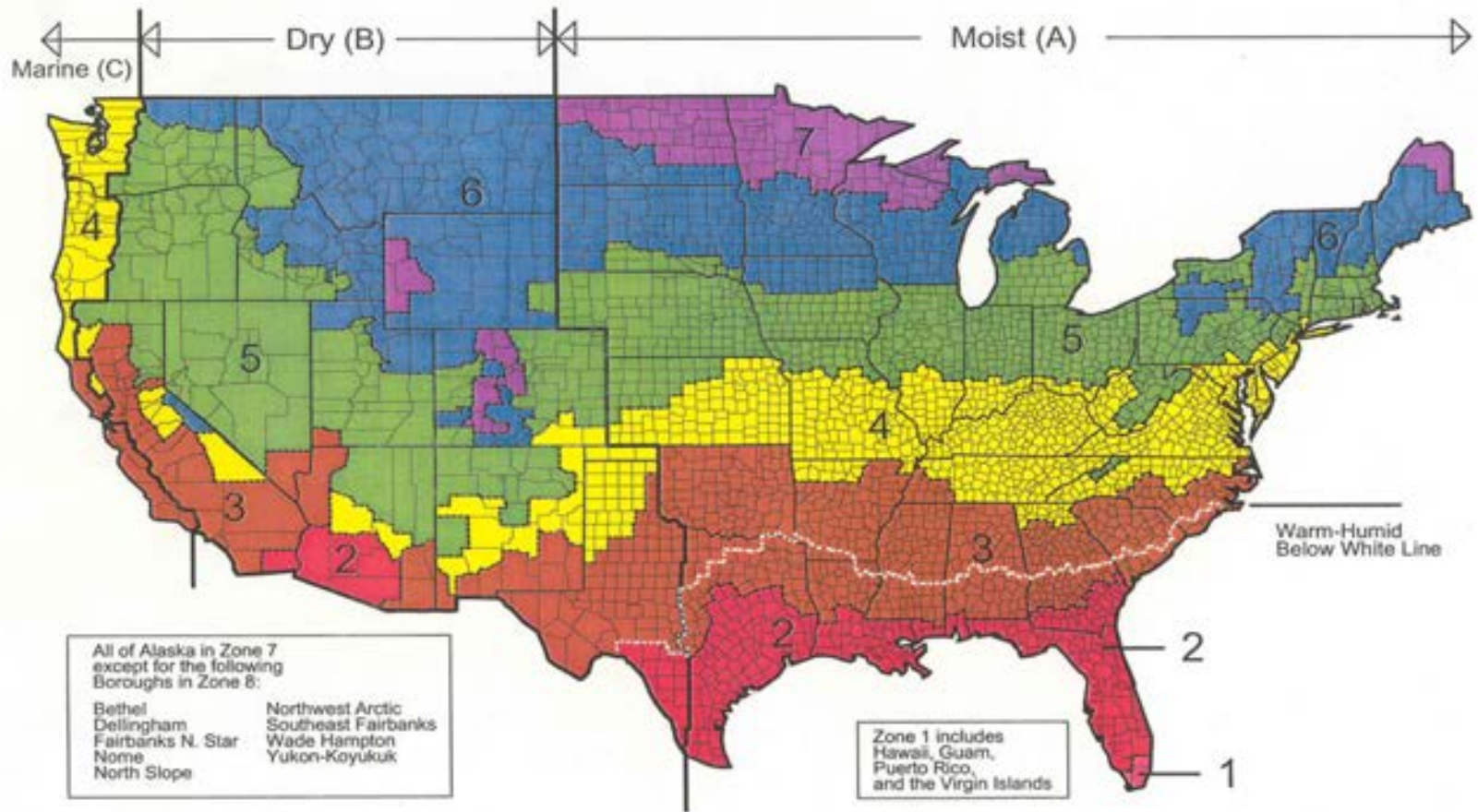




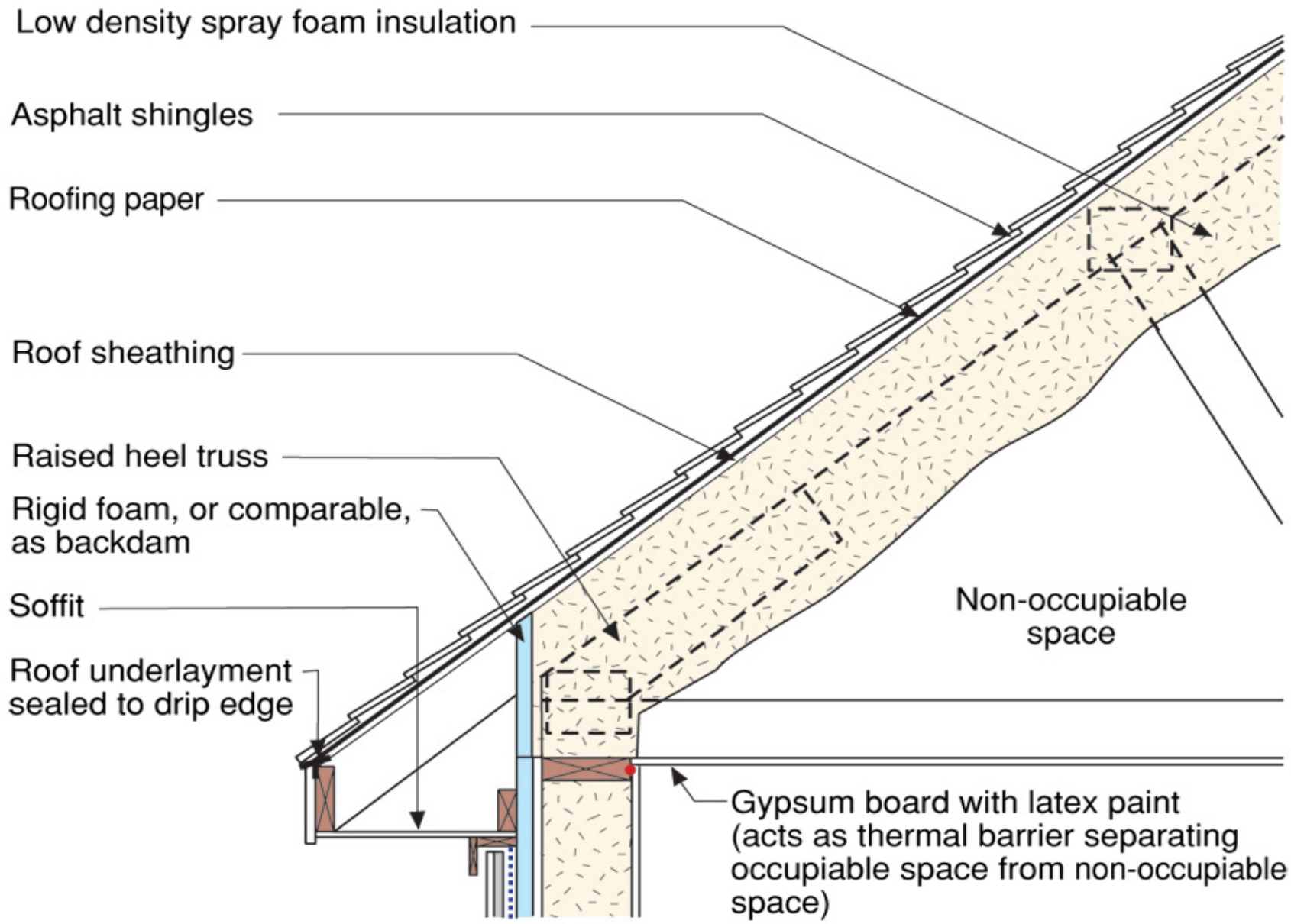


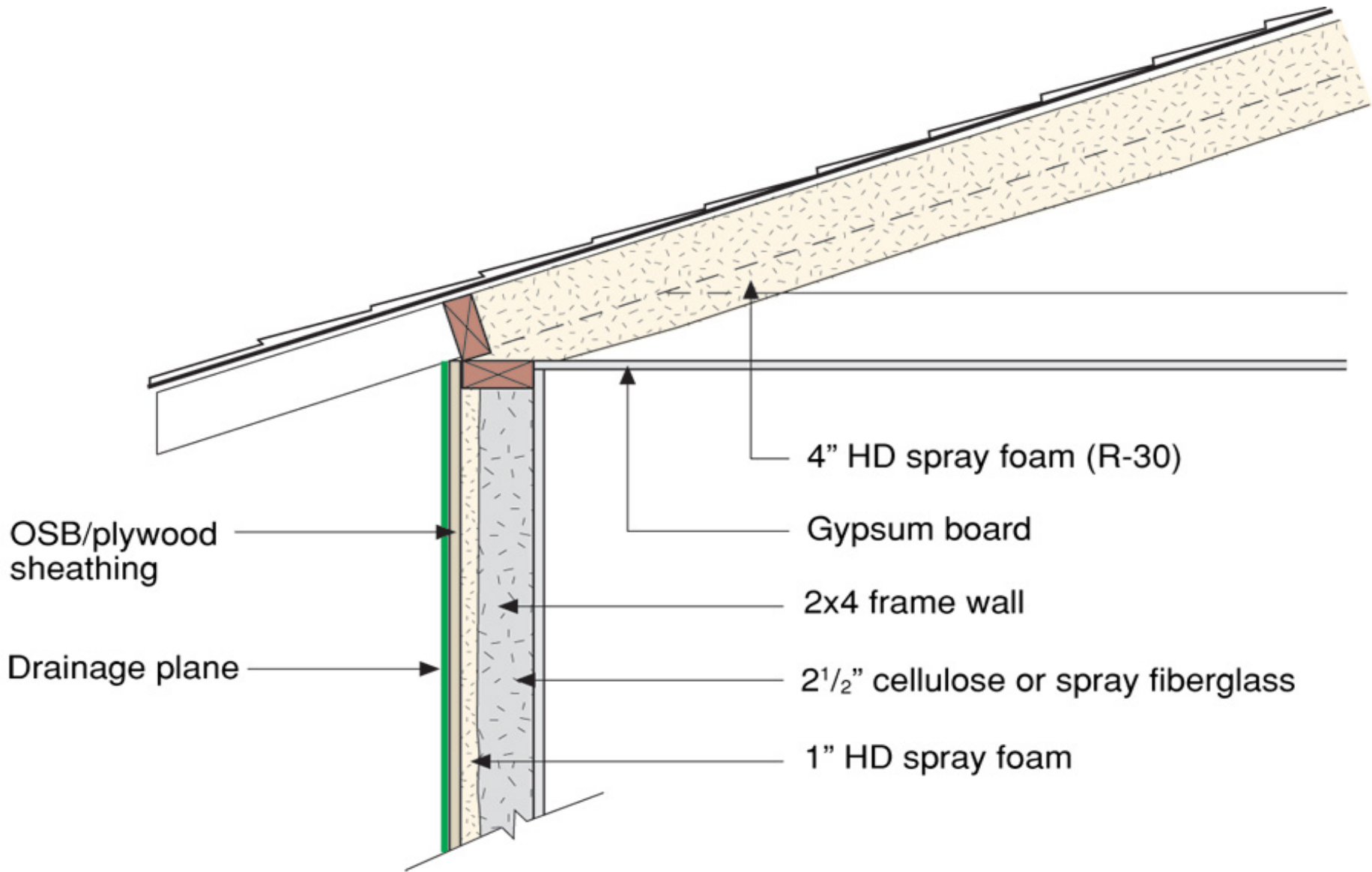


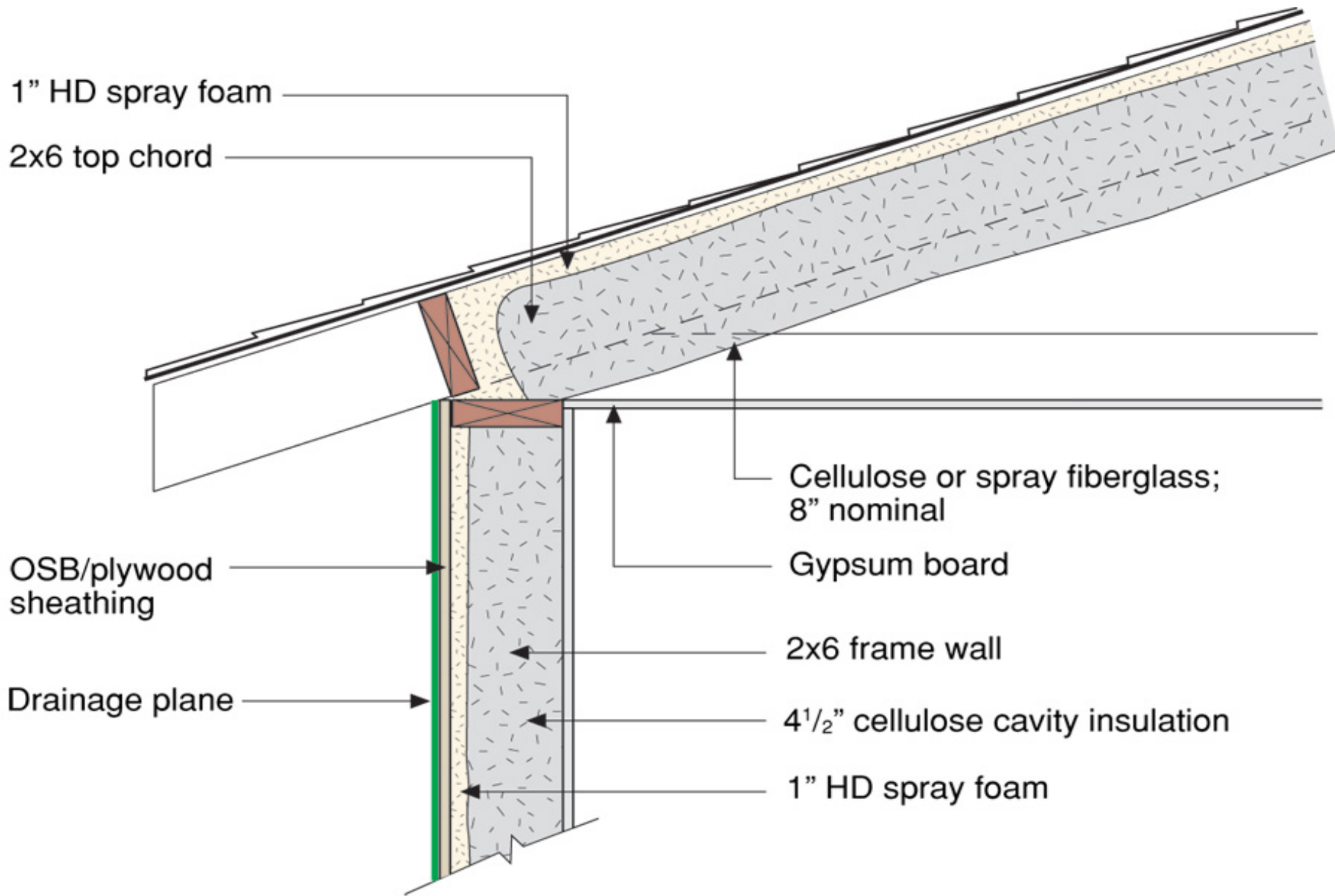
Map of DOE's Proposed Climate Zones

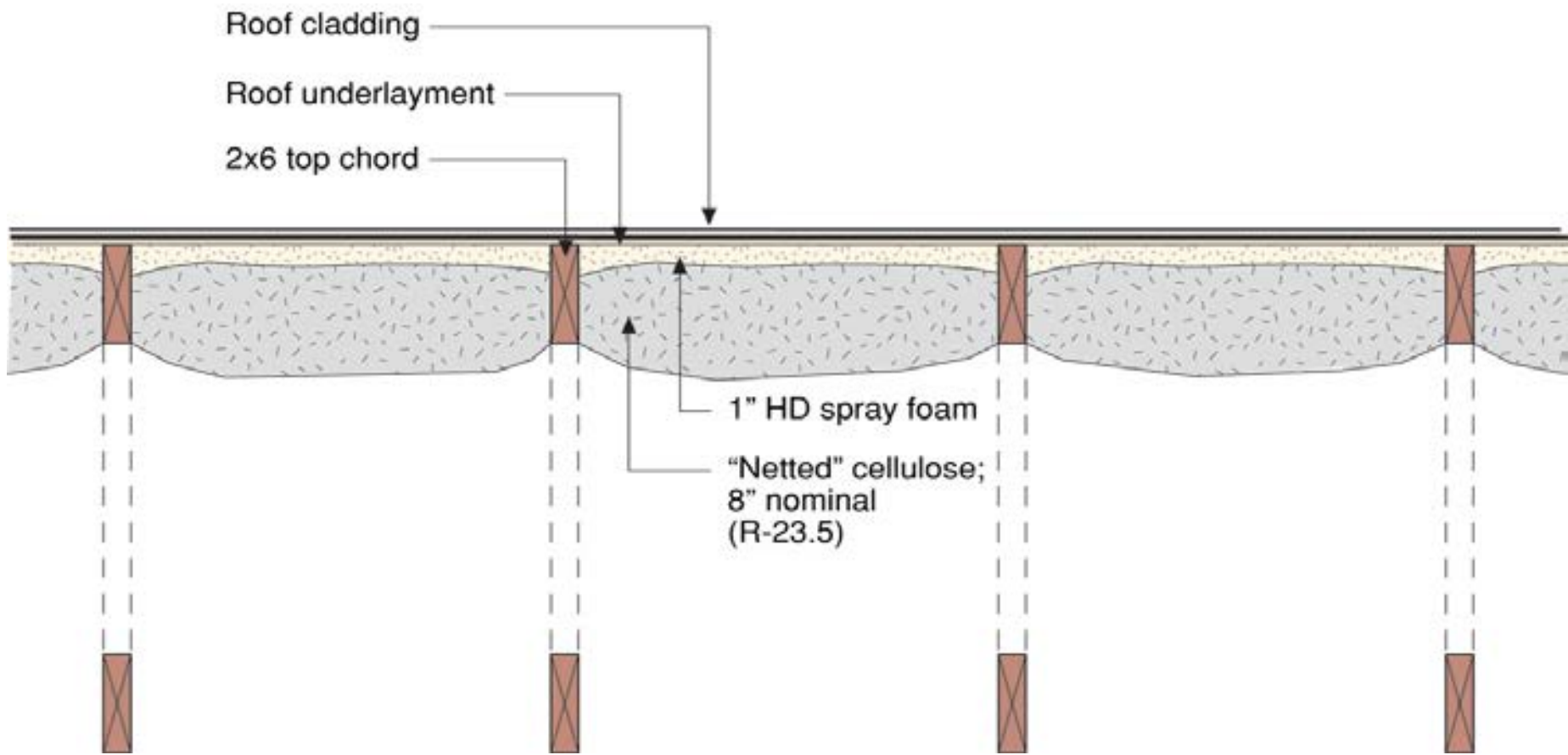


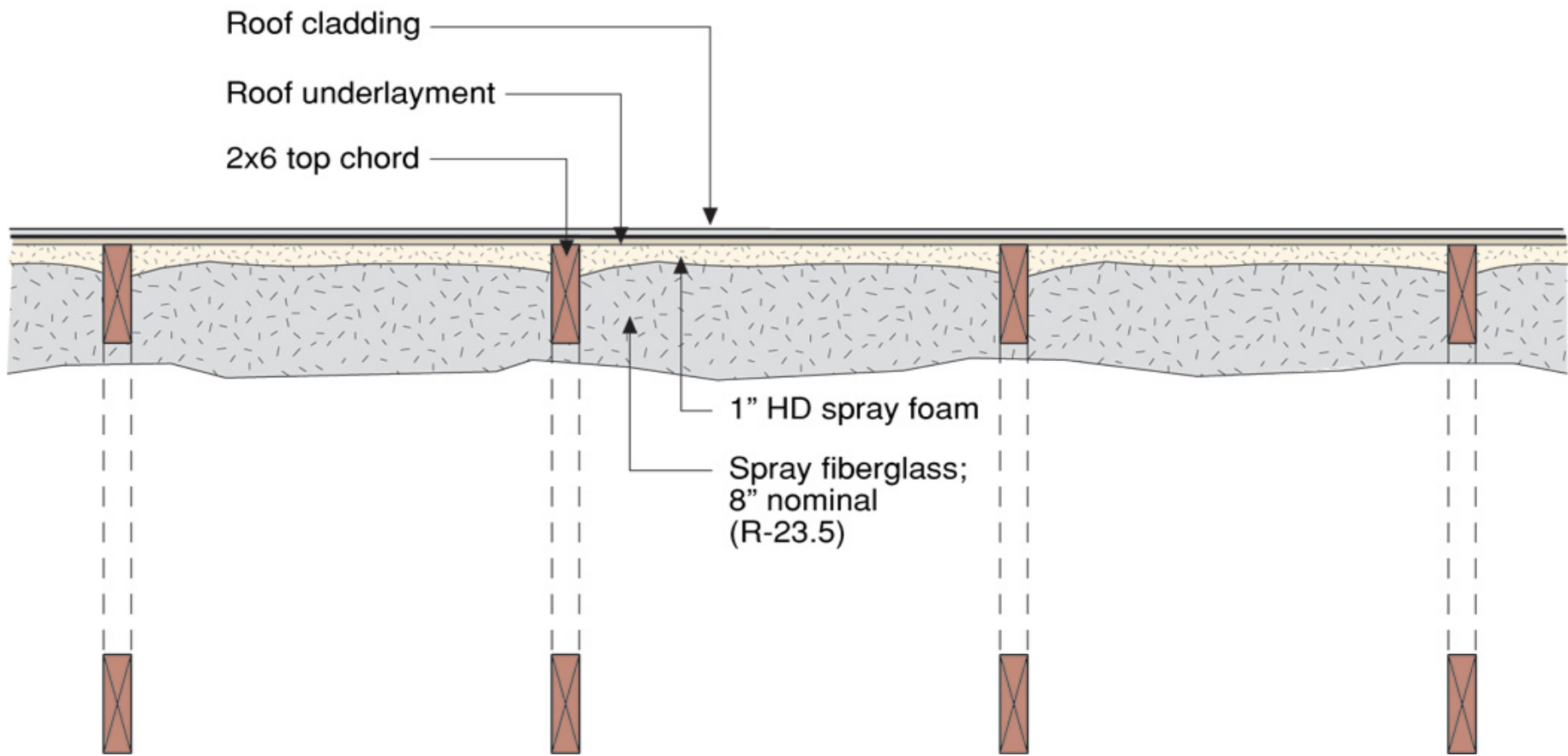
March 24, 2003

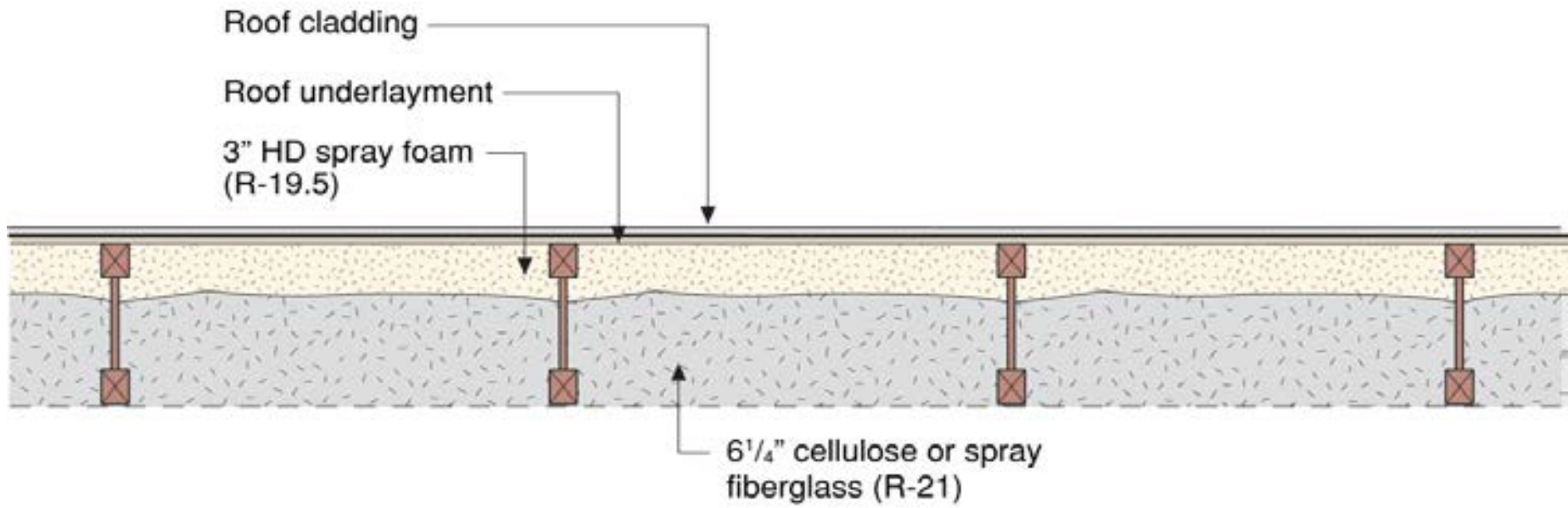








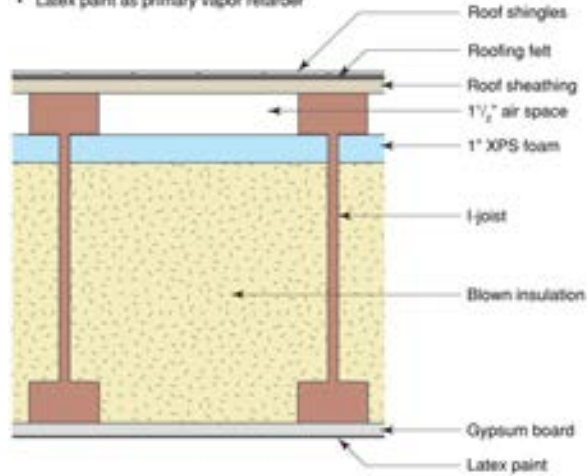




Vented roof with I-joint

Notes:

- 1 1/2" vented air space connected to soffit and ridge vents
- Gypsum board as air barrier
- Use care at recessed fixtures
- Latex paint as primary vapor retarder



Unvented roof with I-joint

