

Joseph Lstiburek, Ph.D., P.Eng, ASHRAE Fellow

Building Science

Adventures In Building Science

www.buildingscience.com

Crawl Spaces

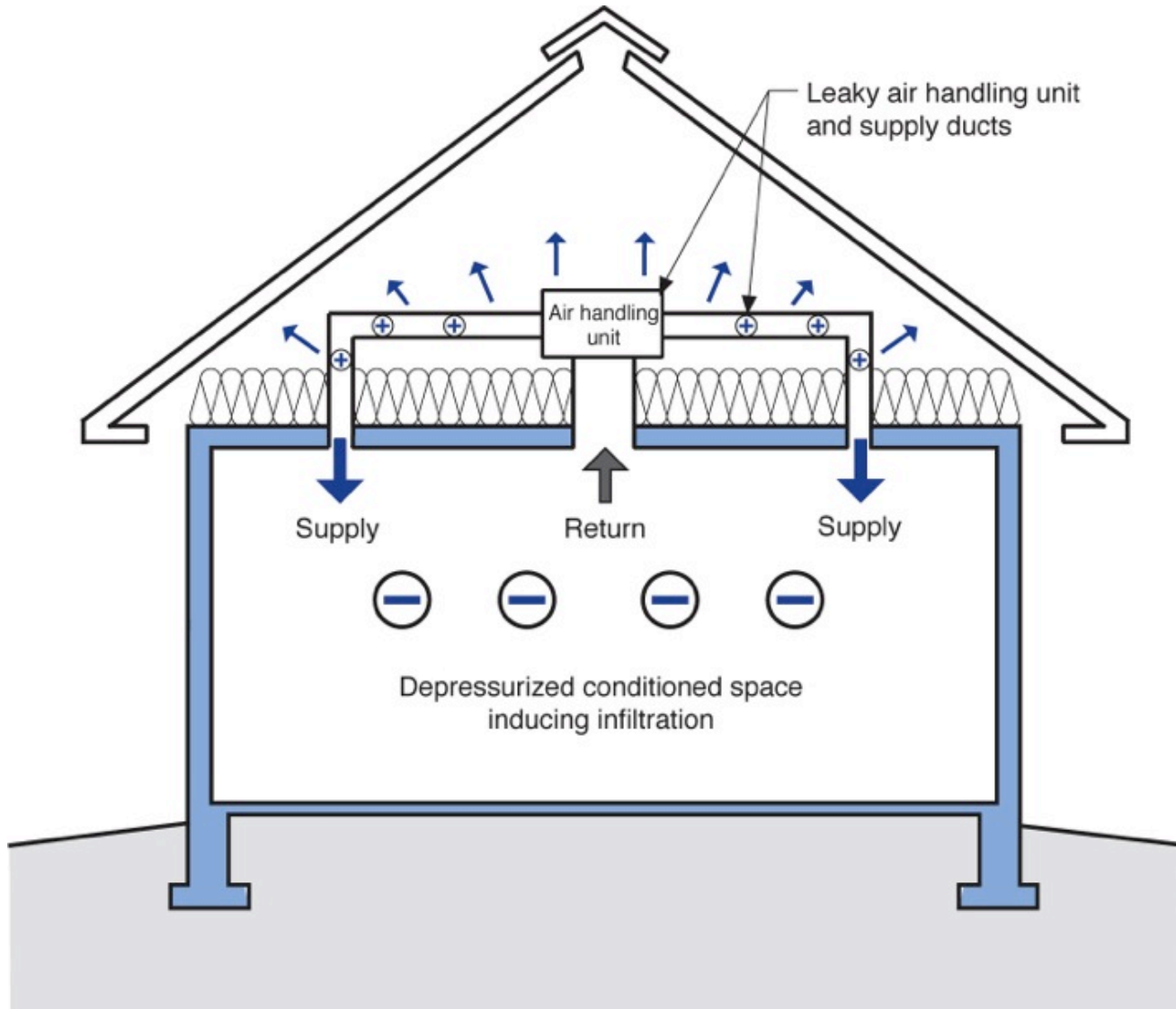
Crawl spaces must be completely connected to either the outside or the inside

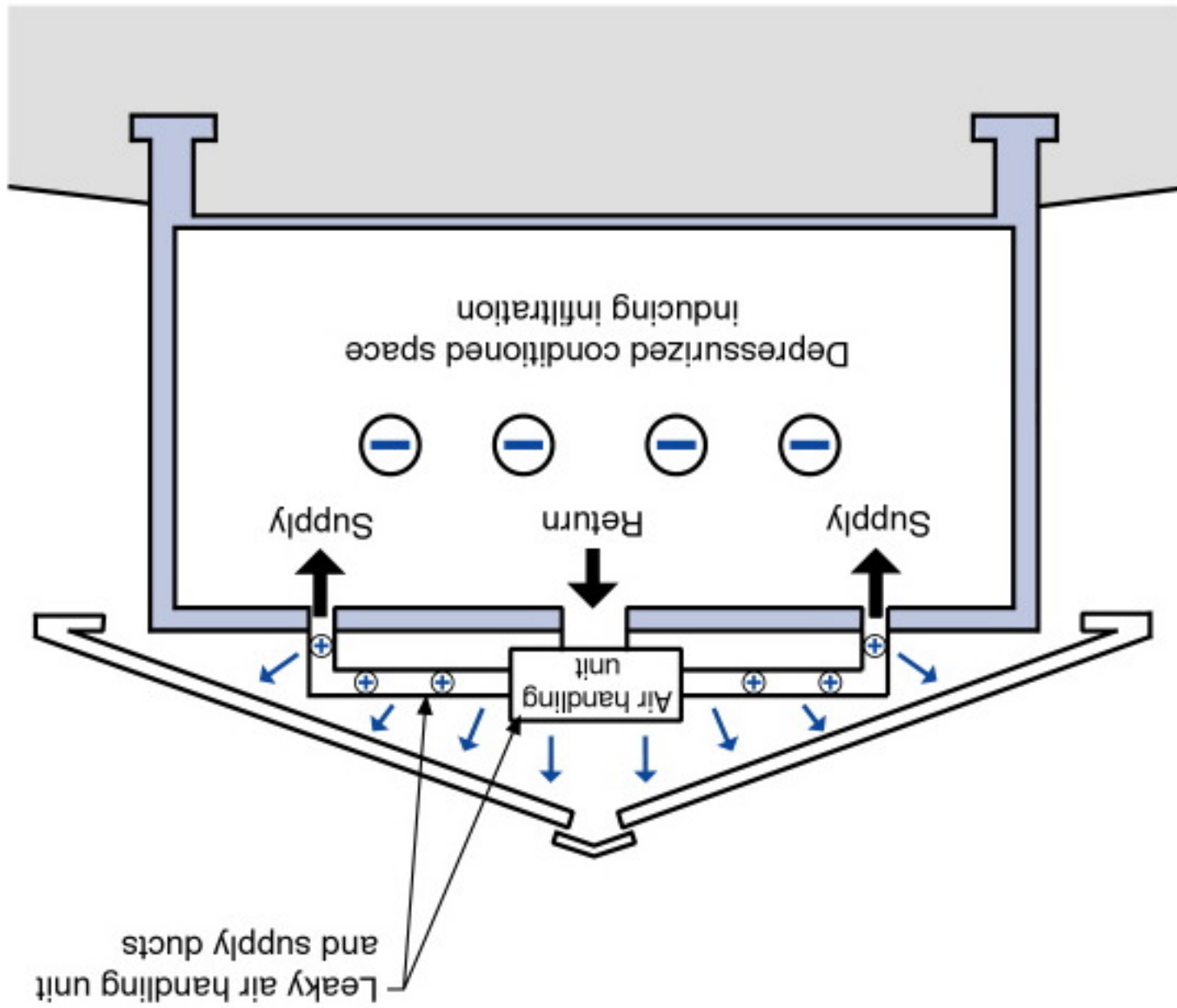
Crawl spaces must be completely connected to either the outside or the inside

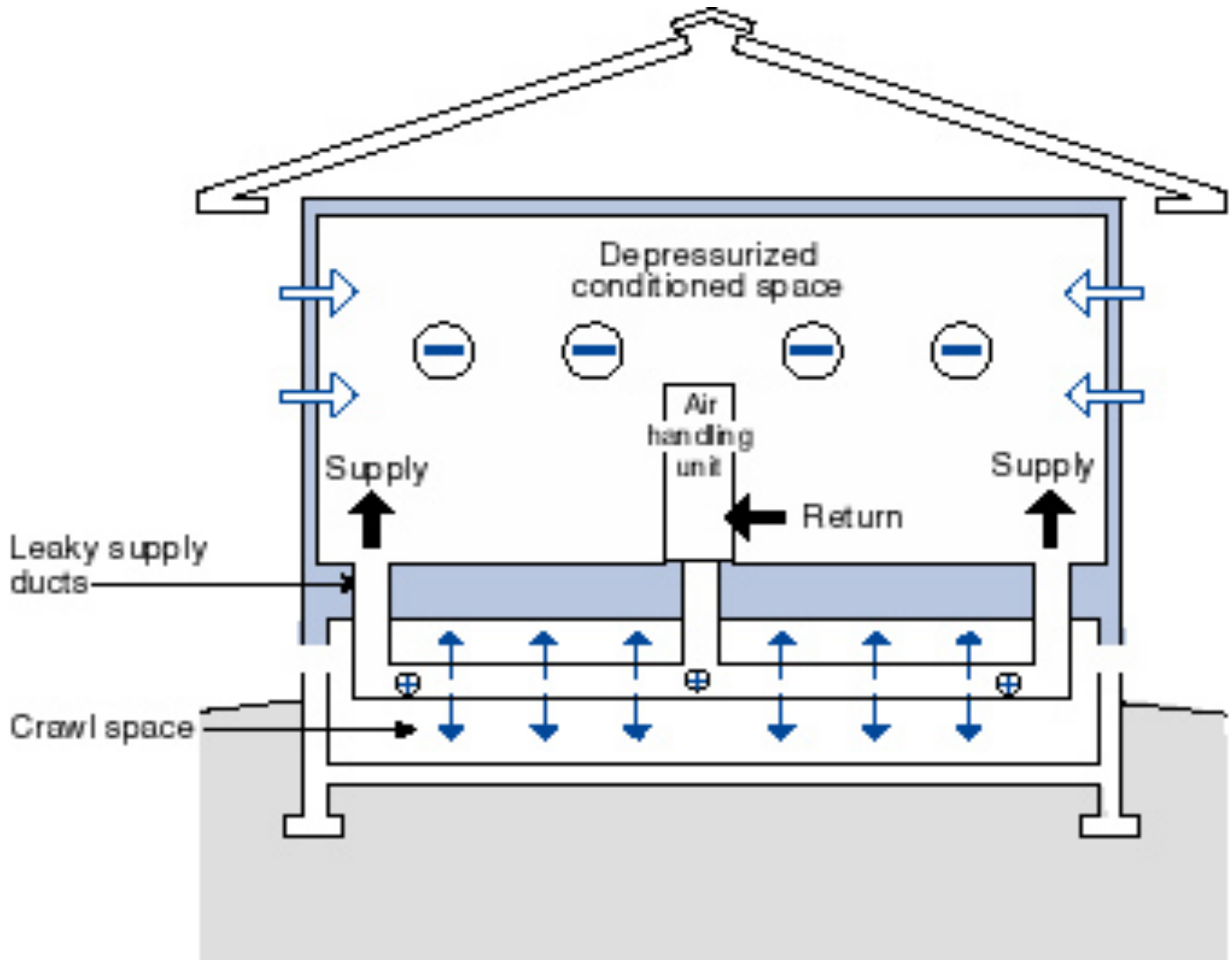
Vented crawl spaces work

Unvented conditioned crawl spaces work

Don't Do Stupid Things







Smart Thing



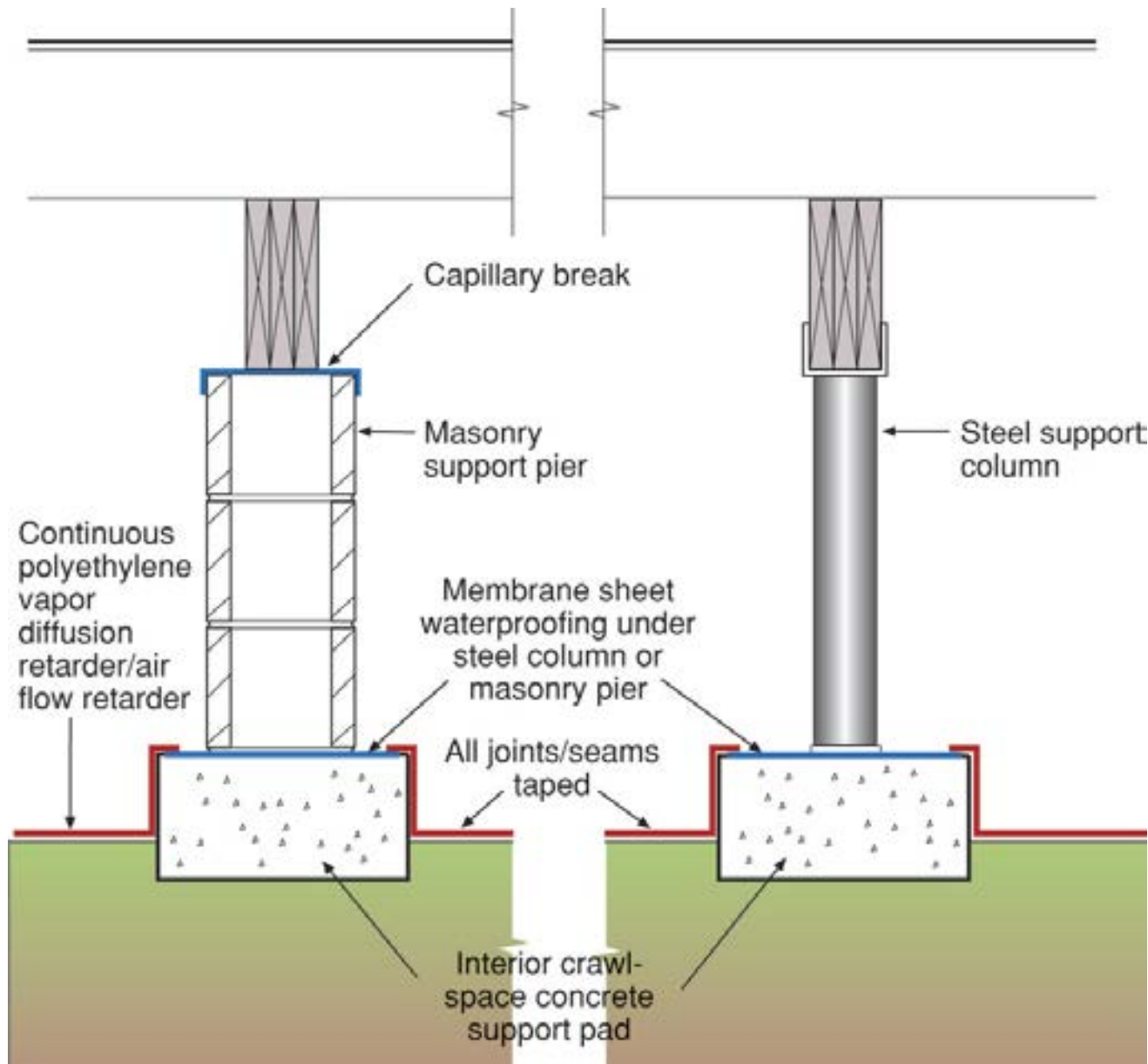












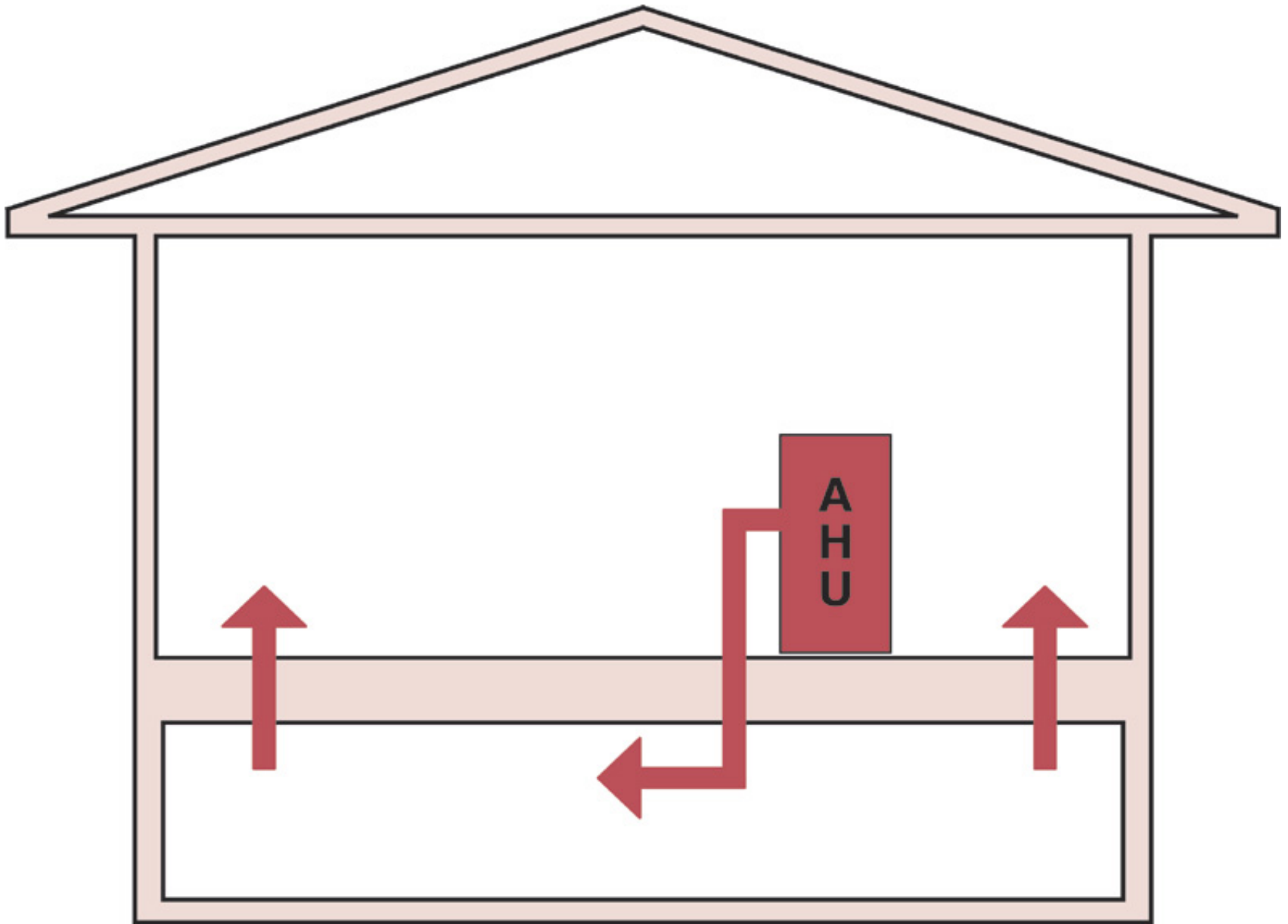
Conditioned Crawlspace Not Unvented
Crawlspace

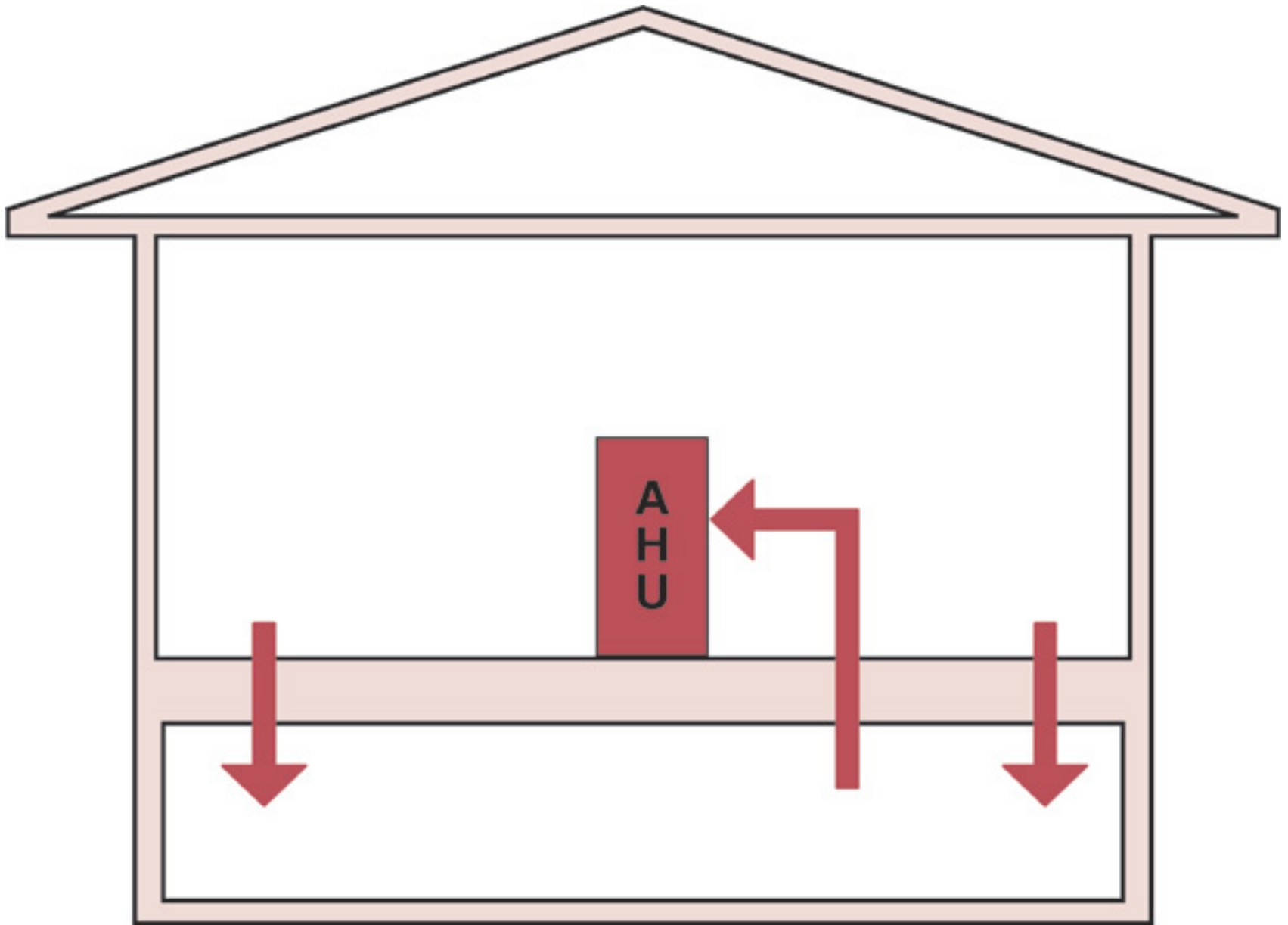
Need Supply Air

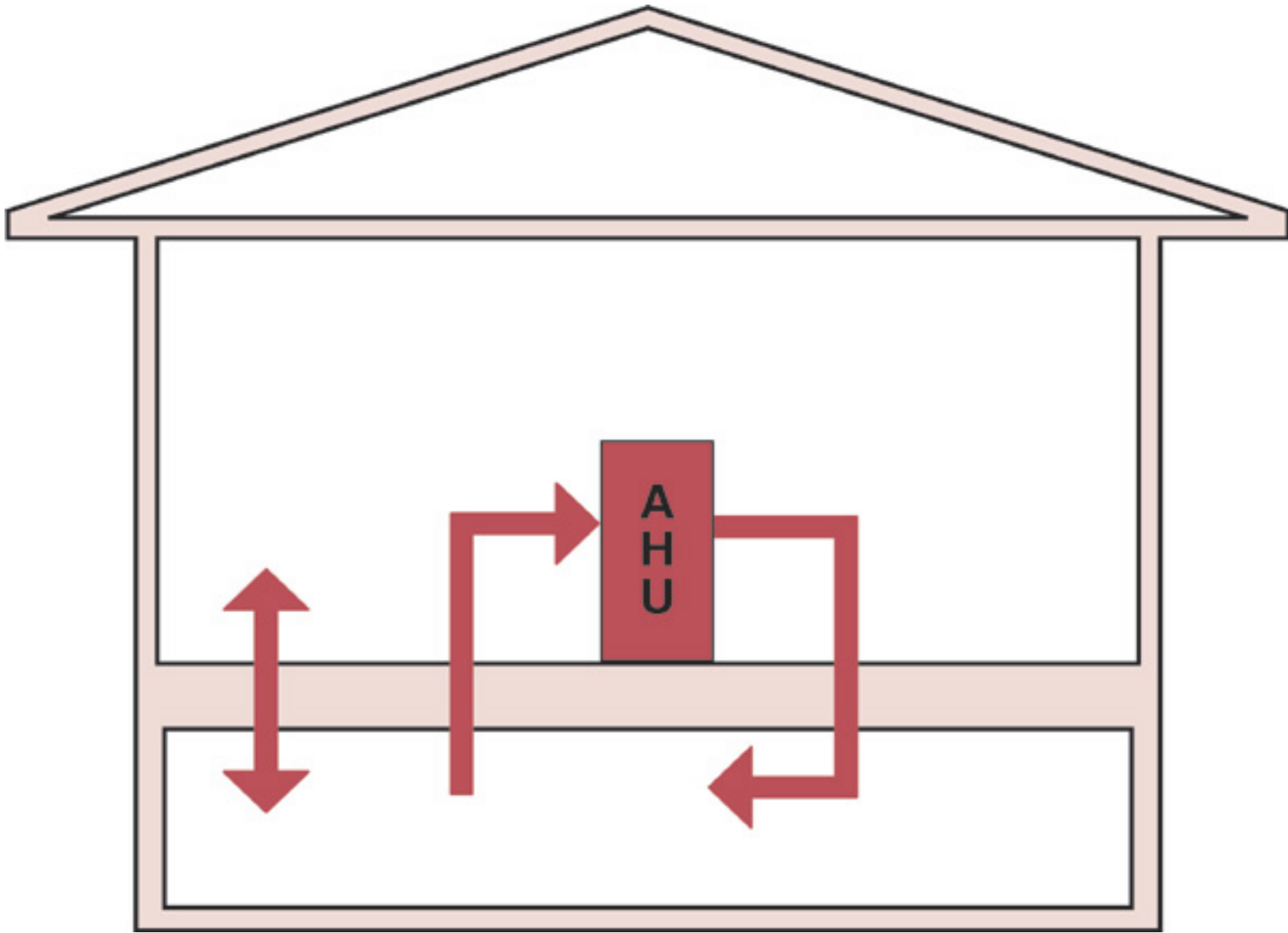
50 cfm/1000 ft² of Crawlspace Area

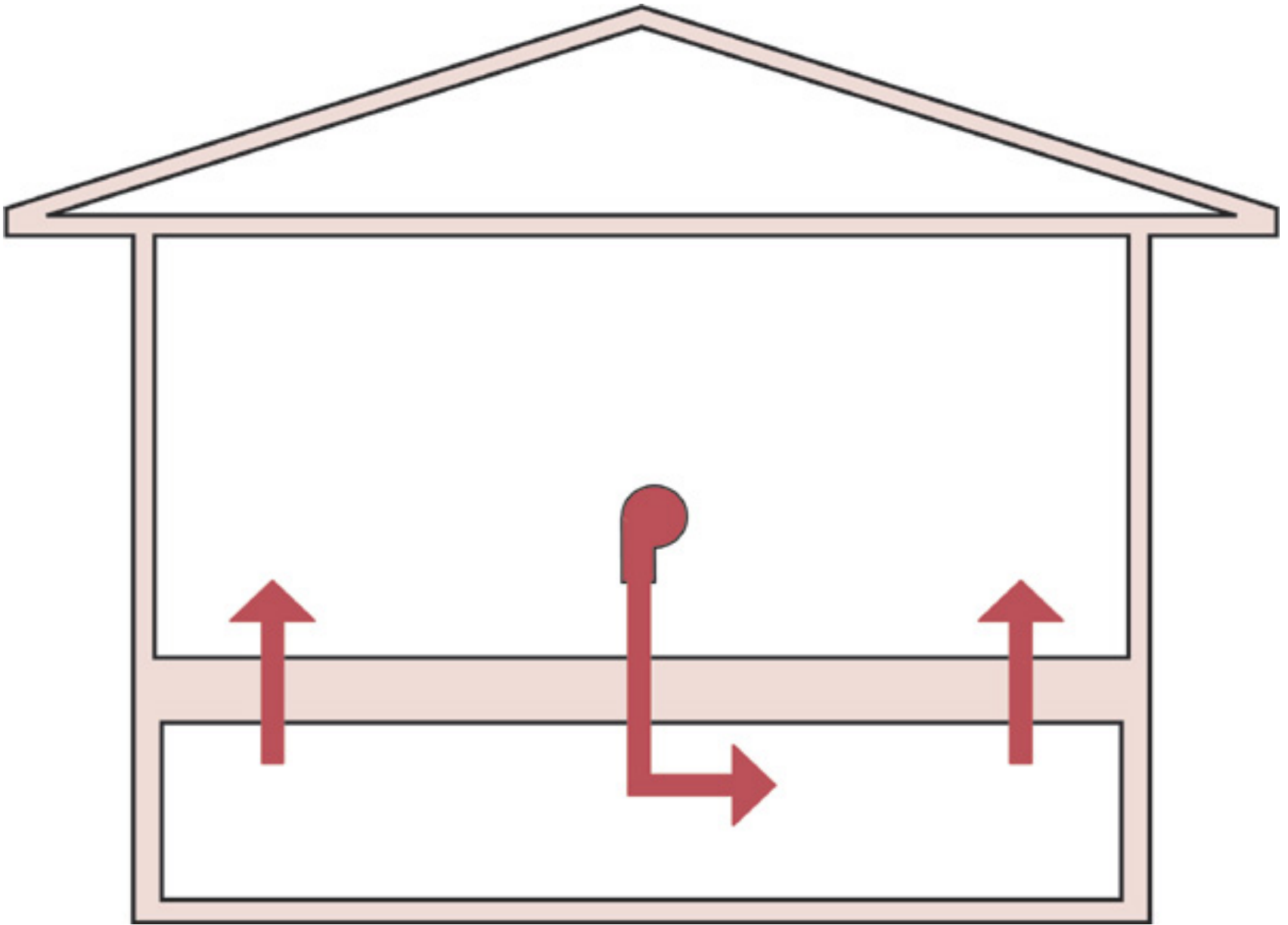
Or

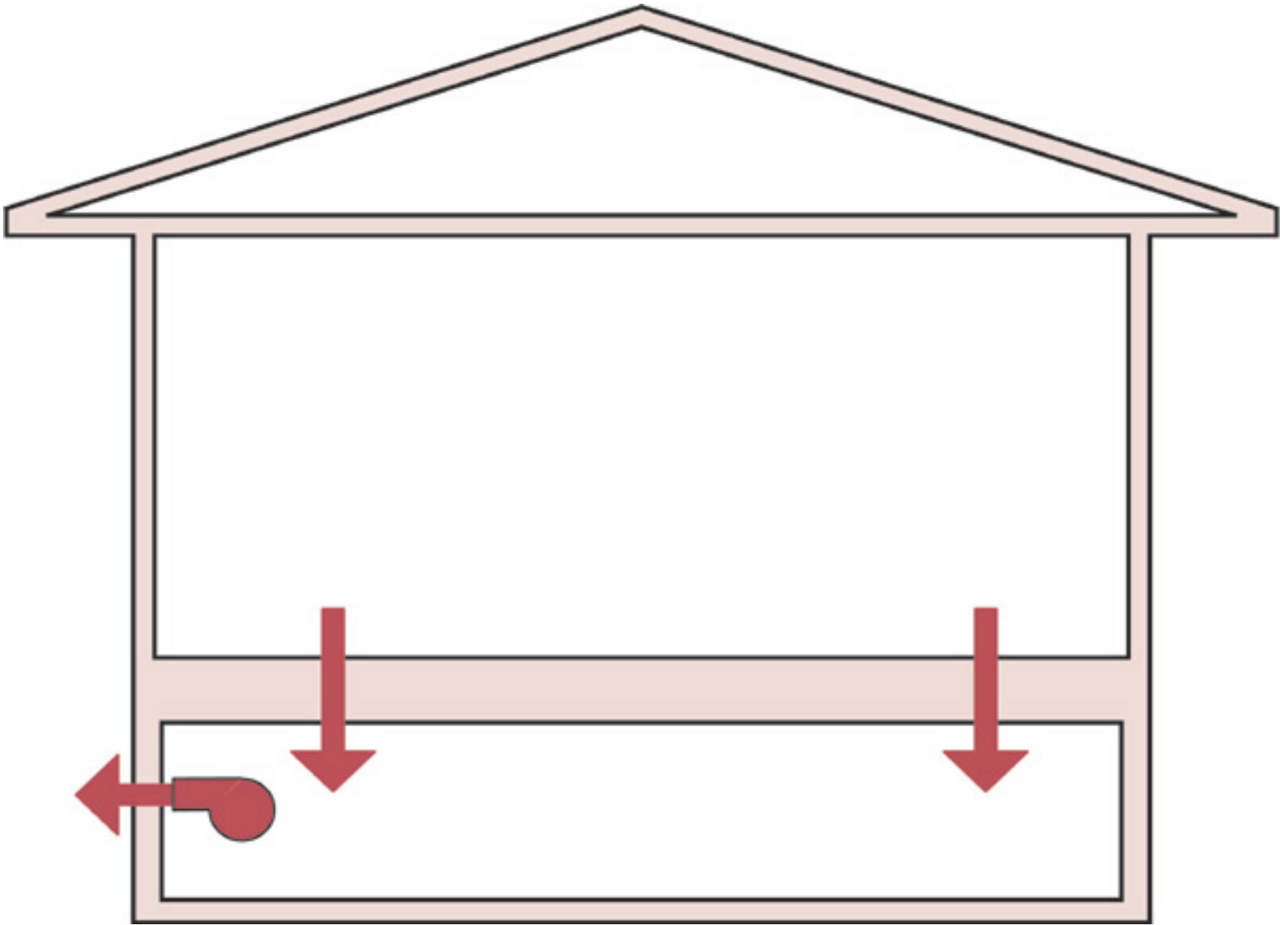
Dehumidification

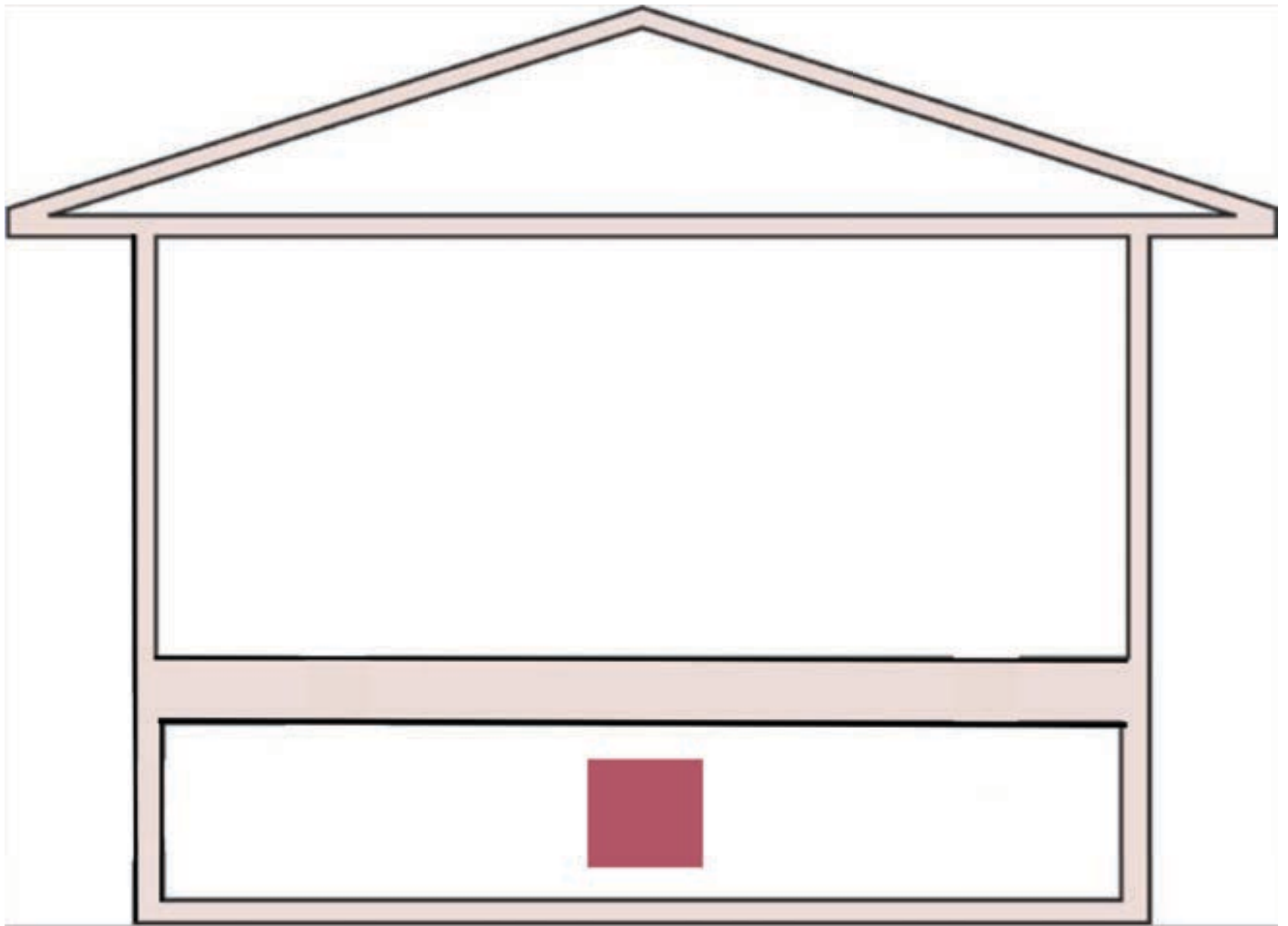


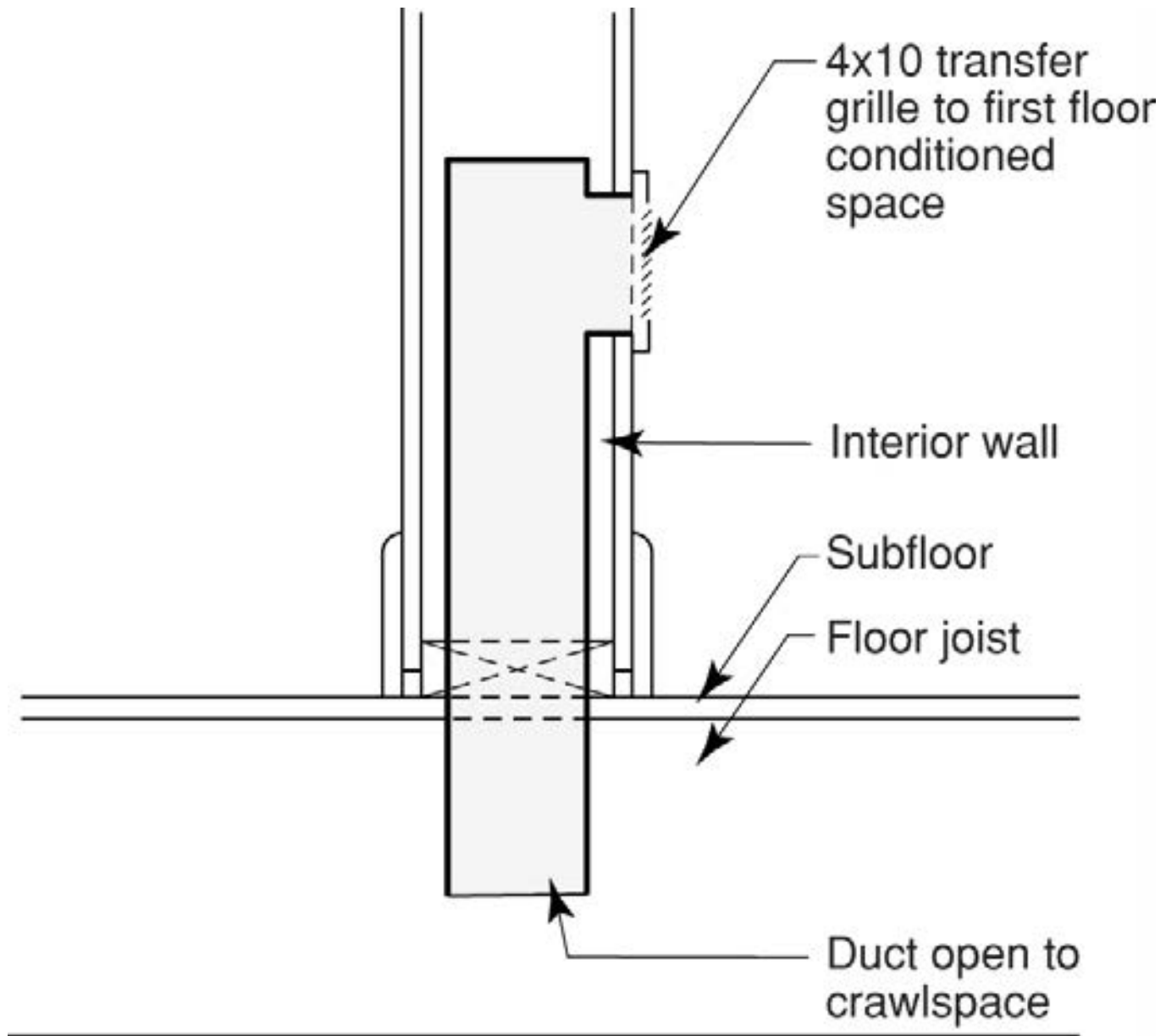


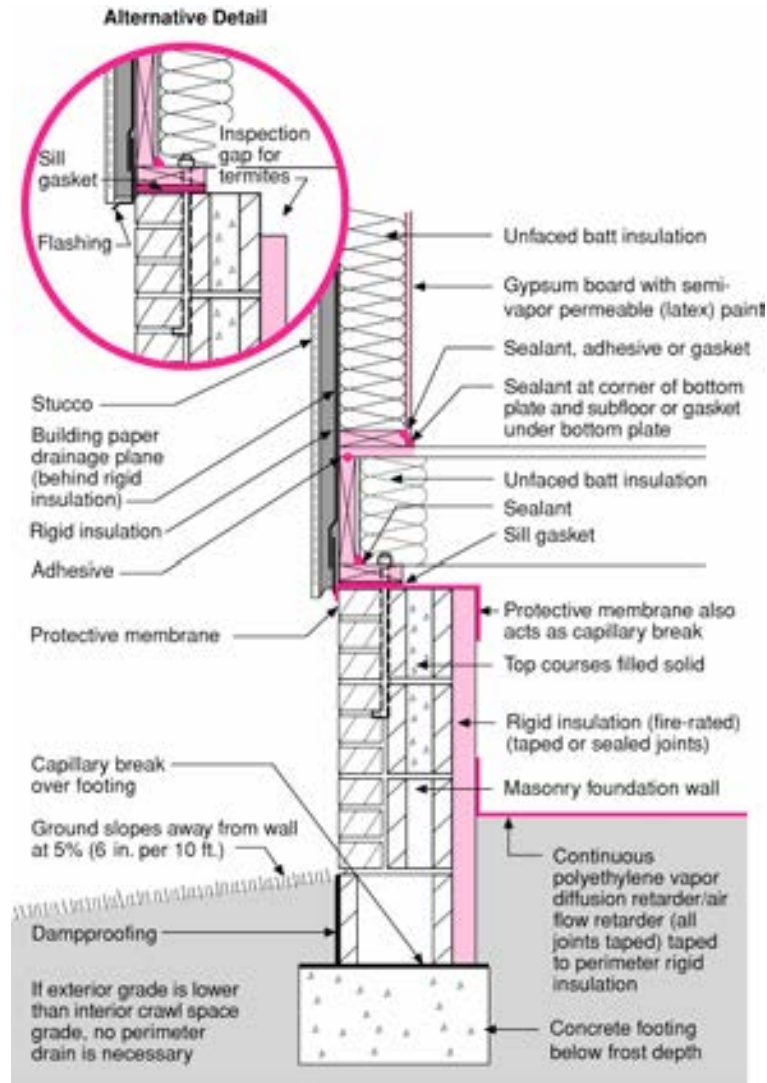


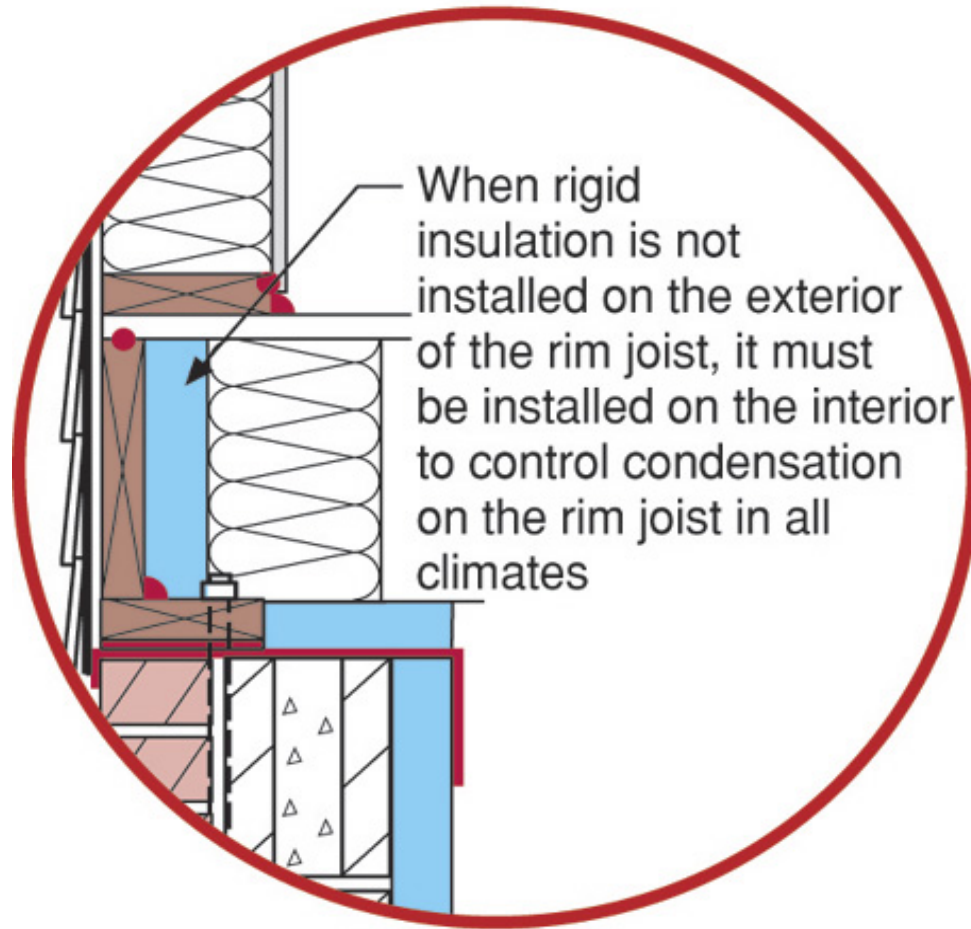




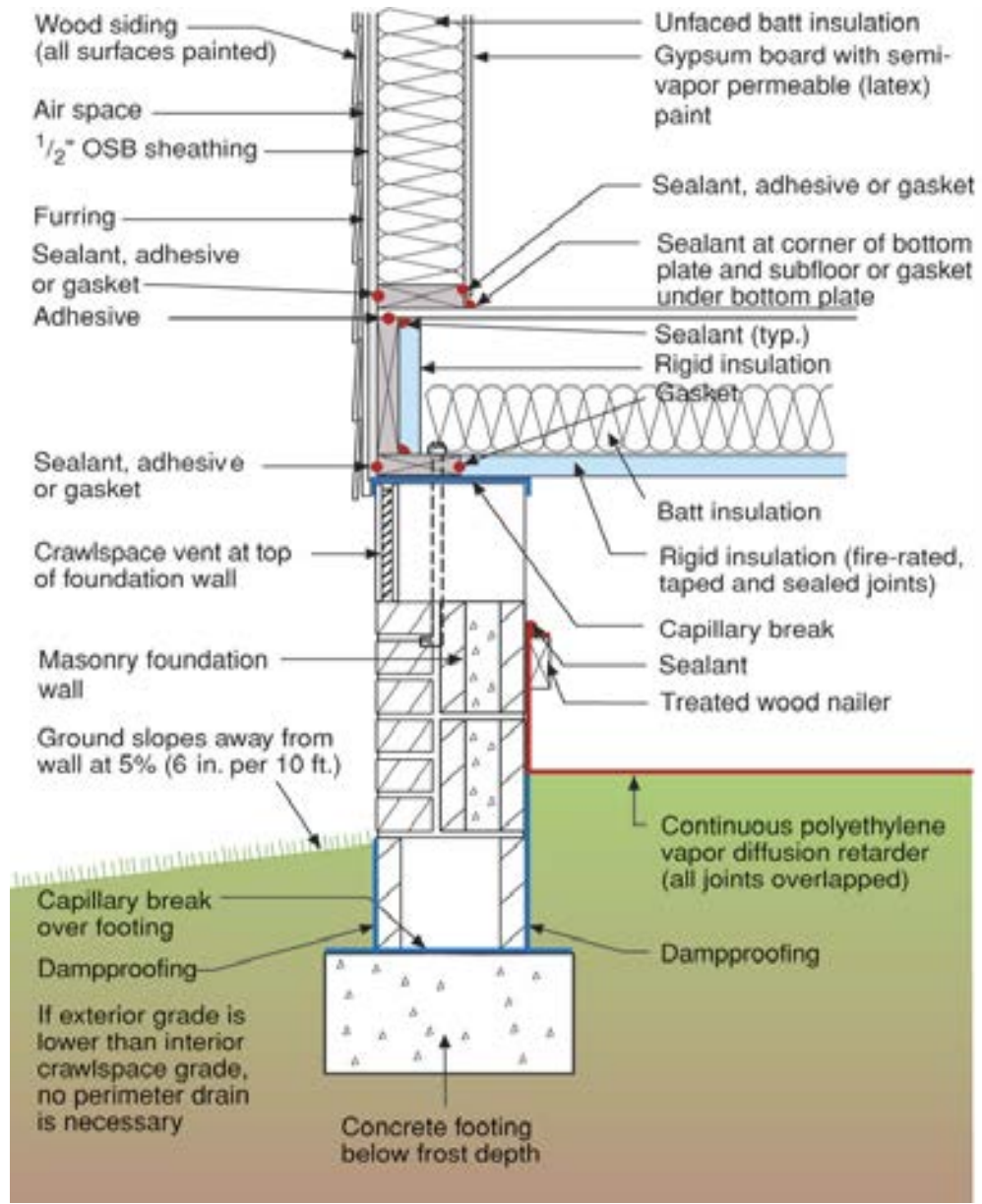


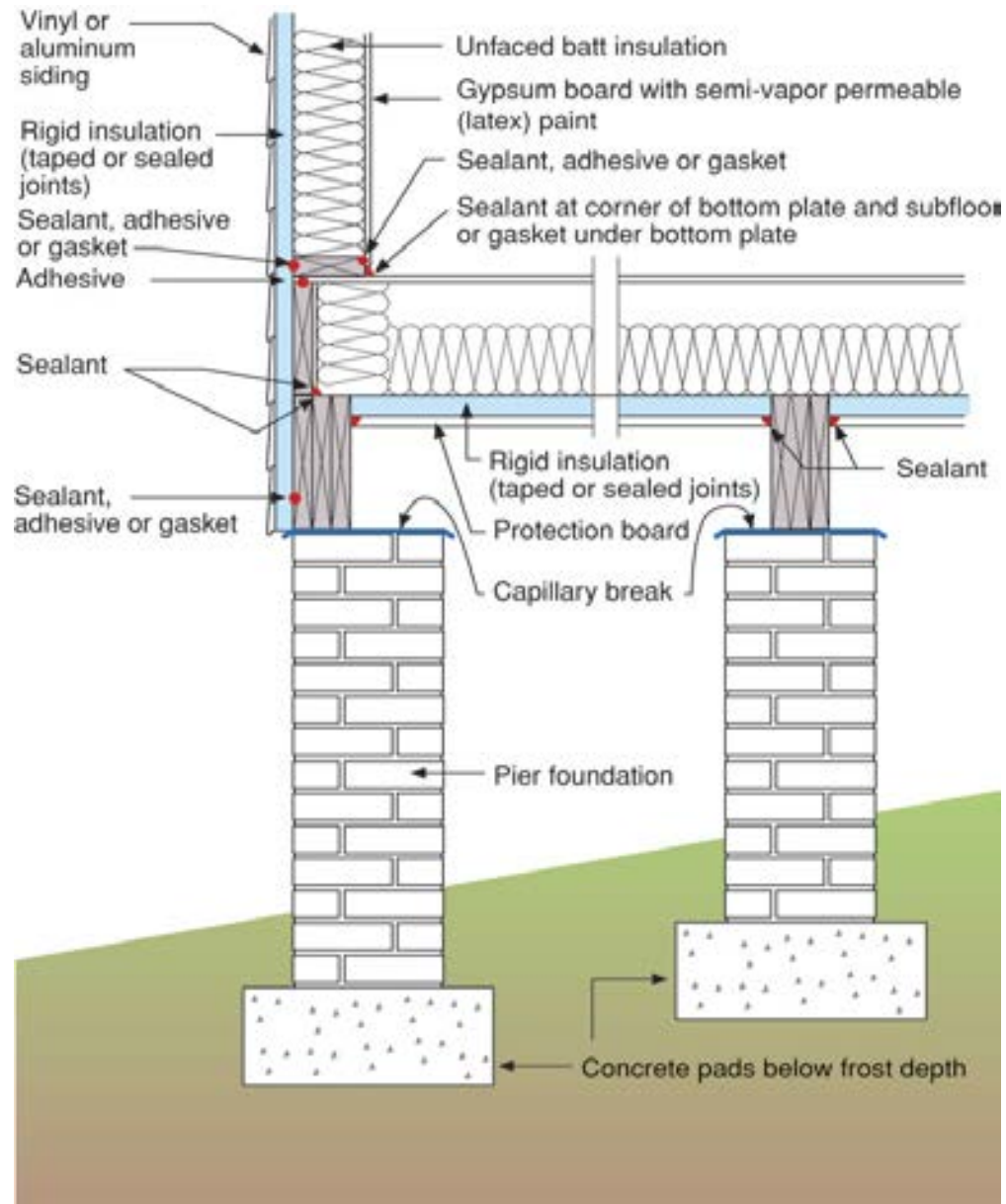






Smart Thing









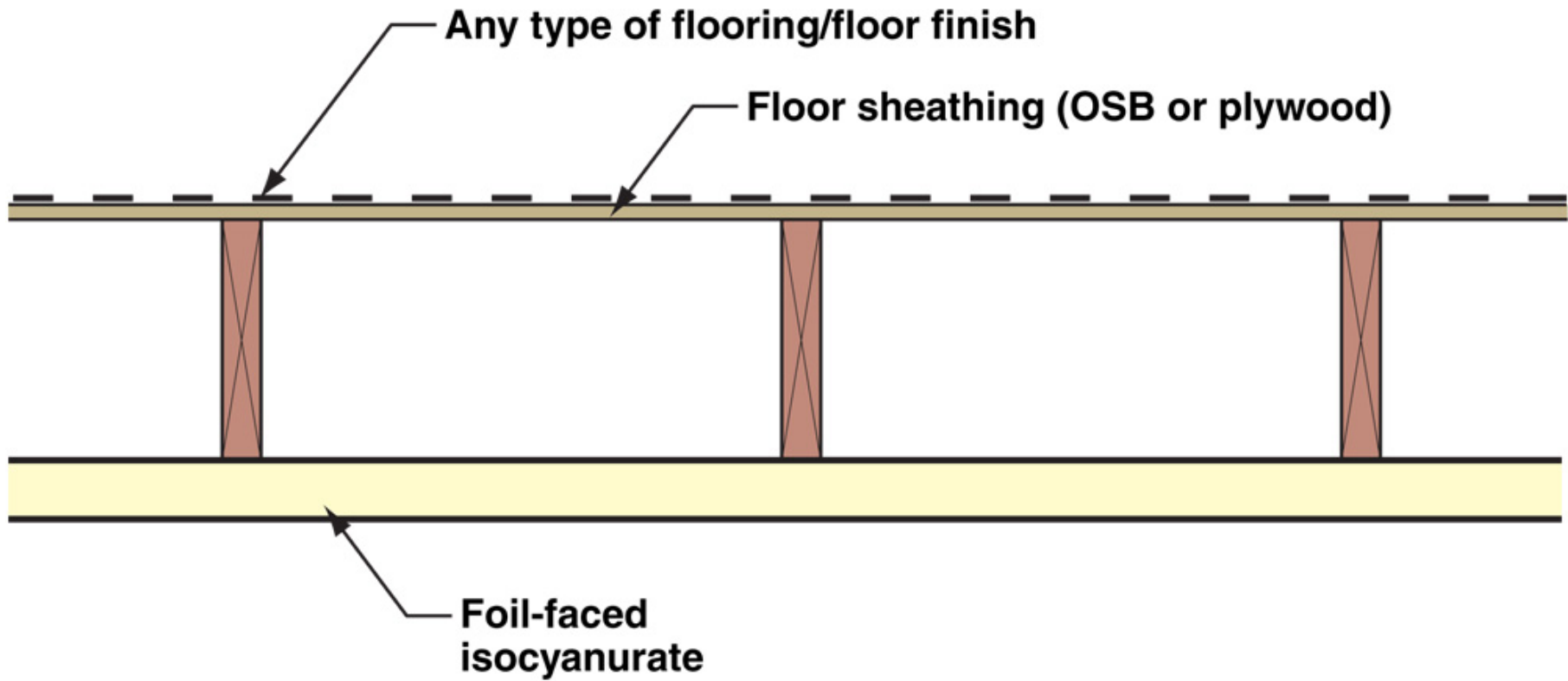


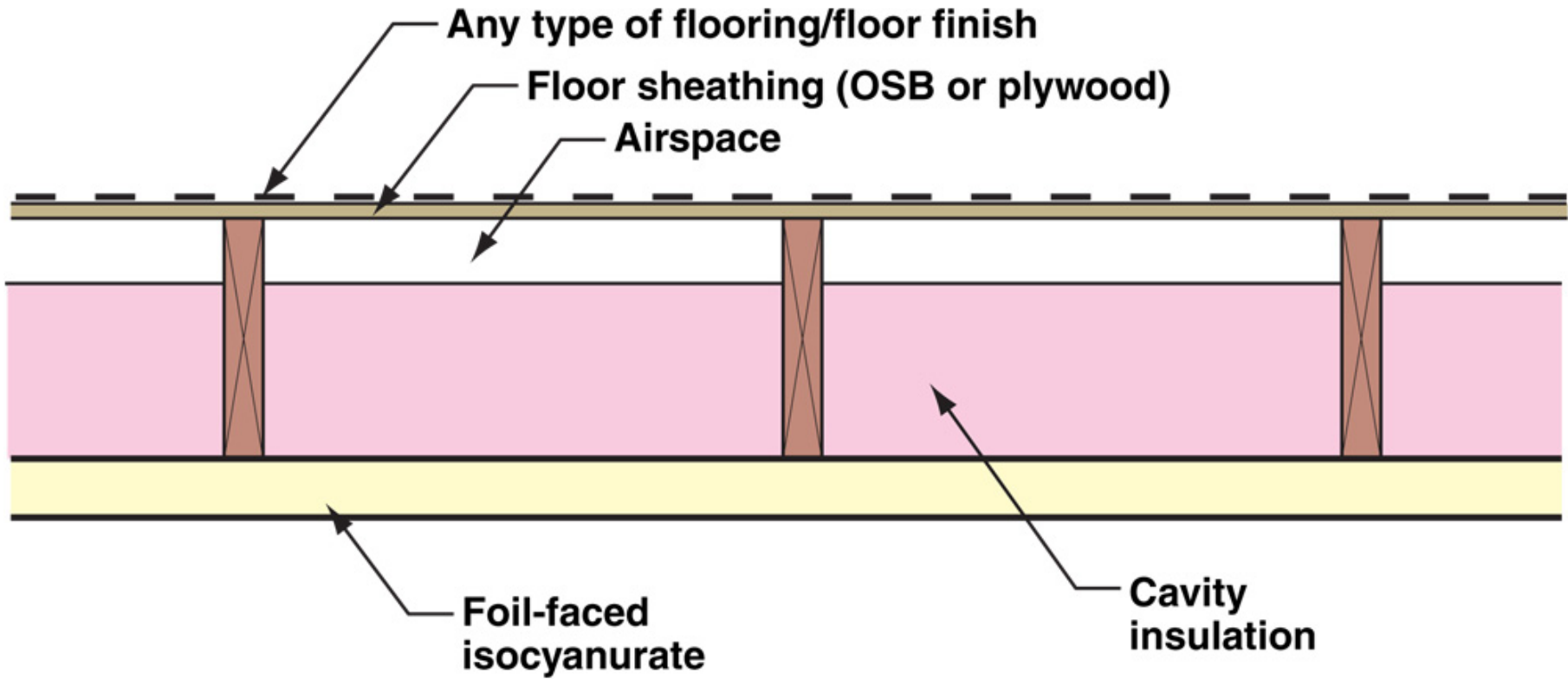


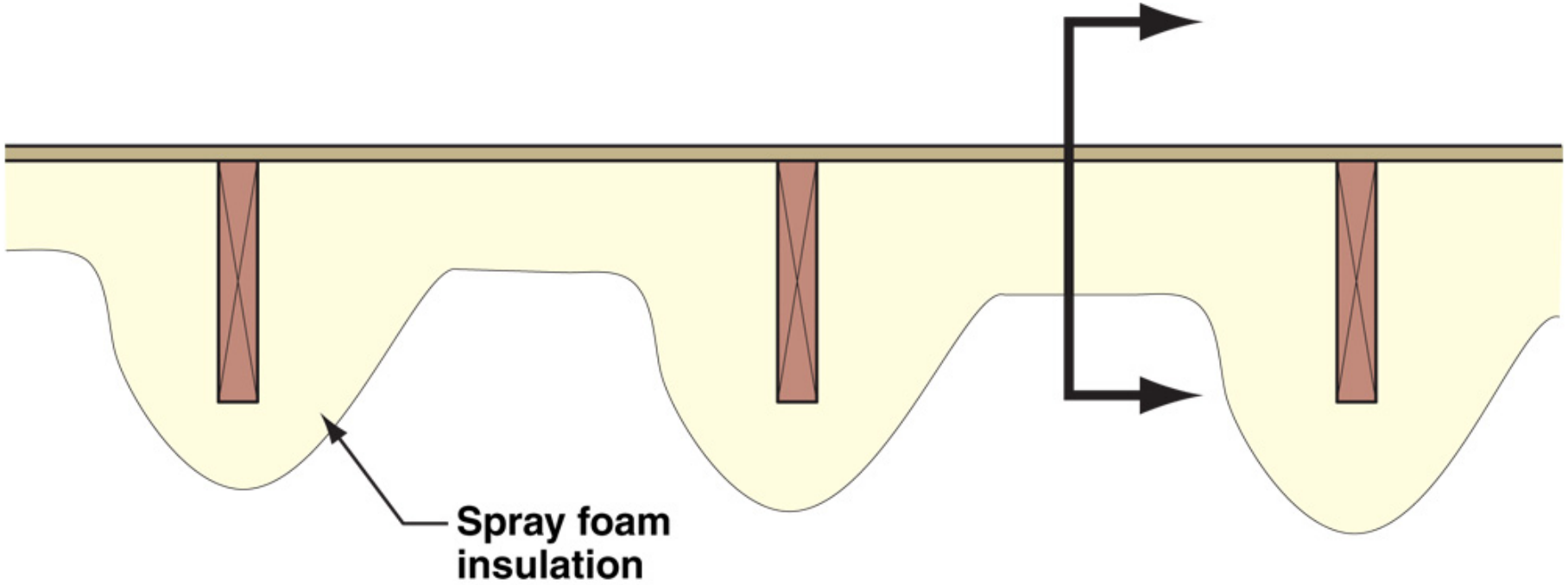


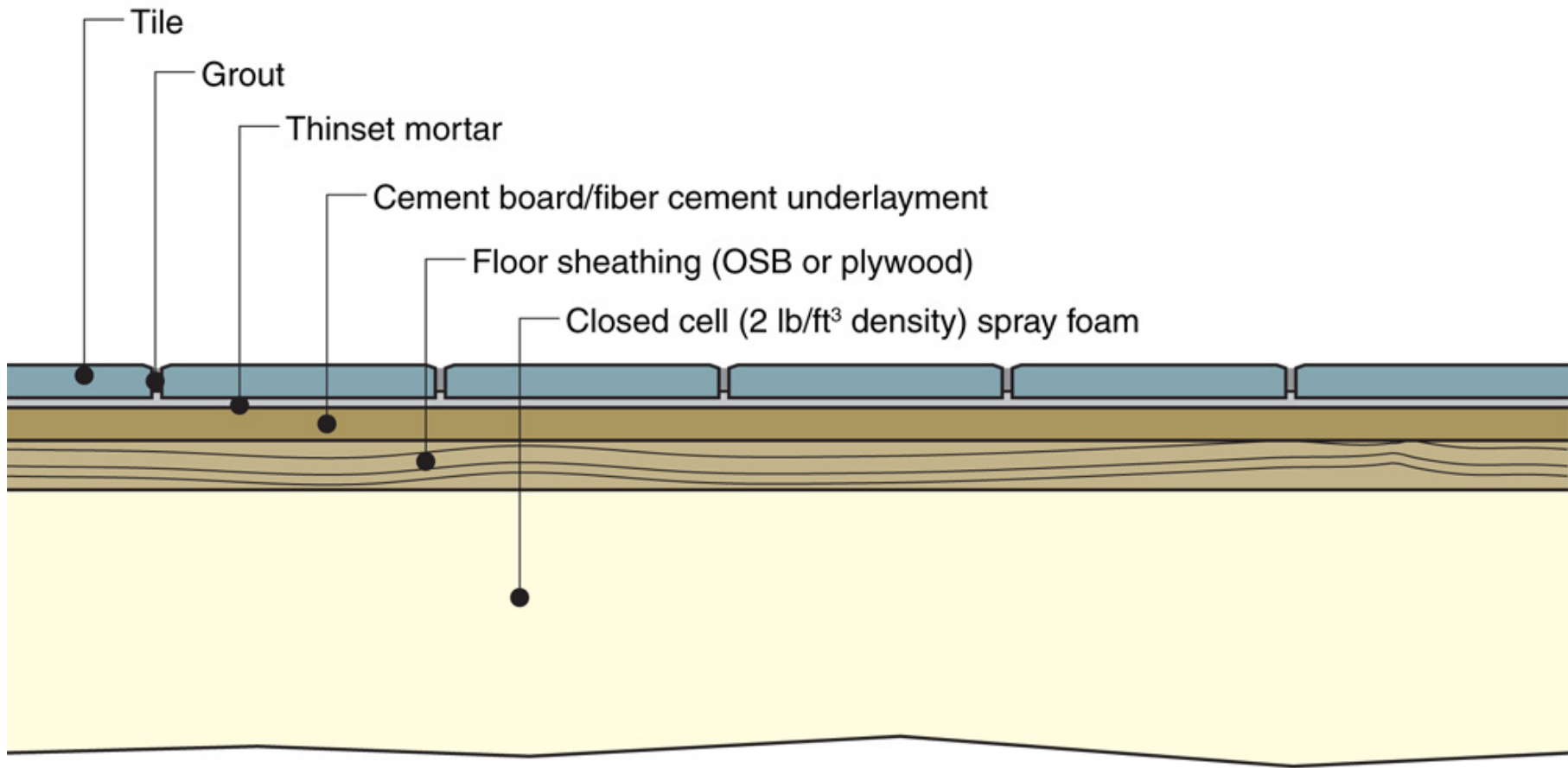


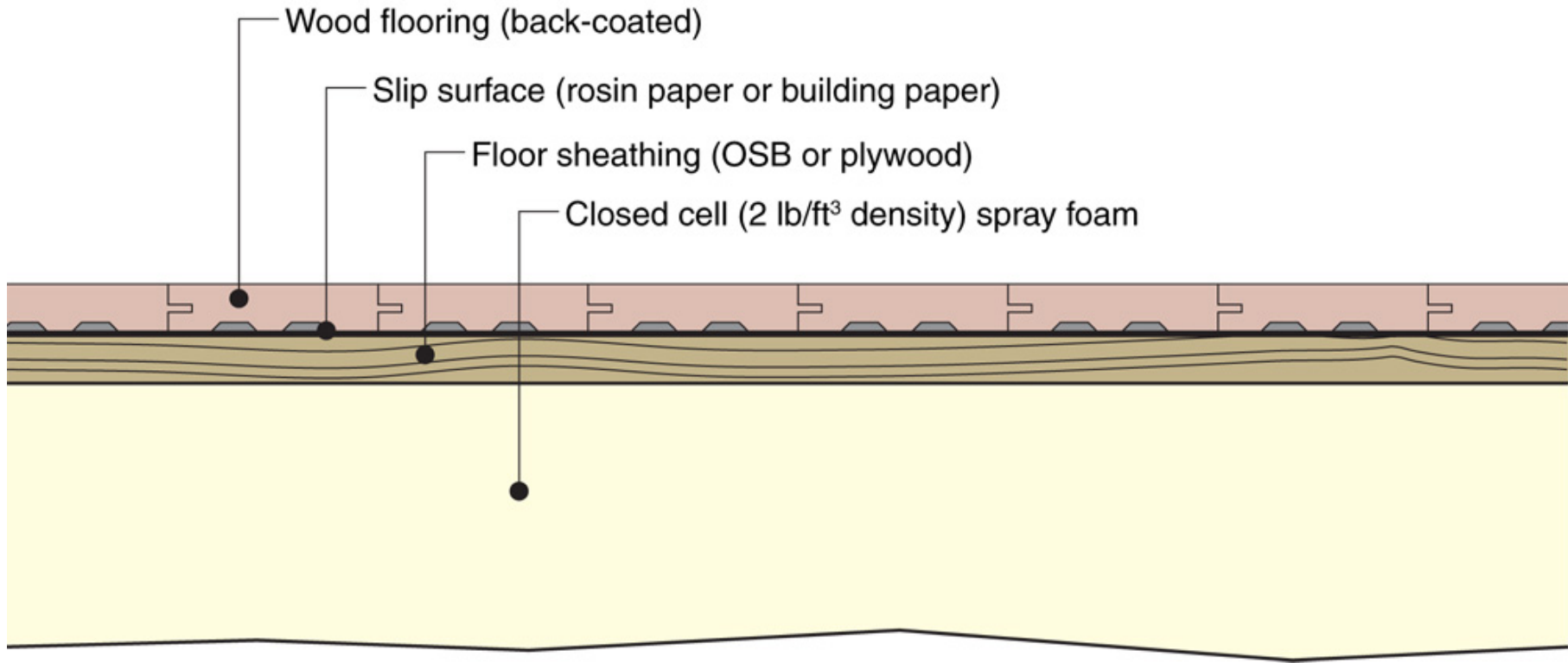


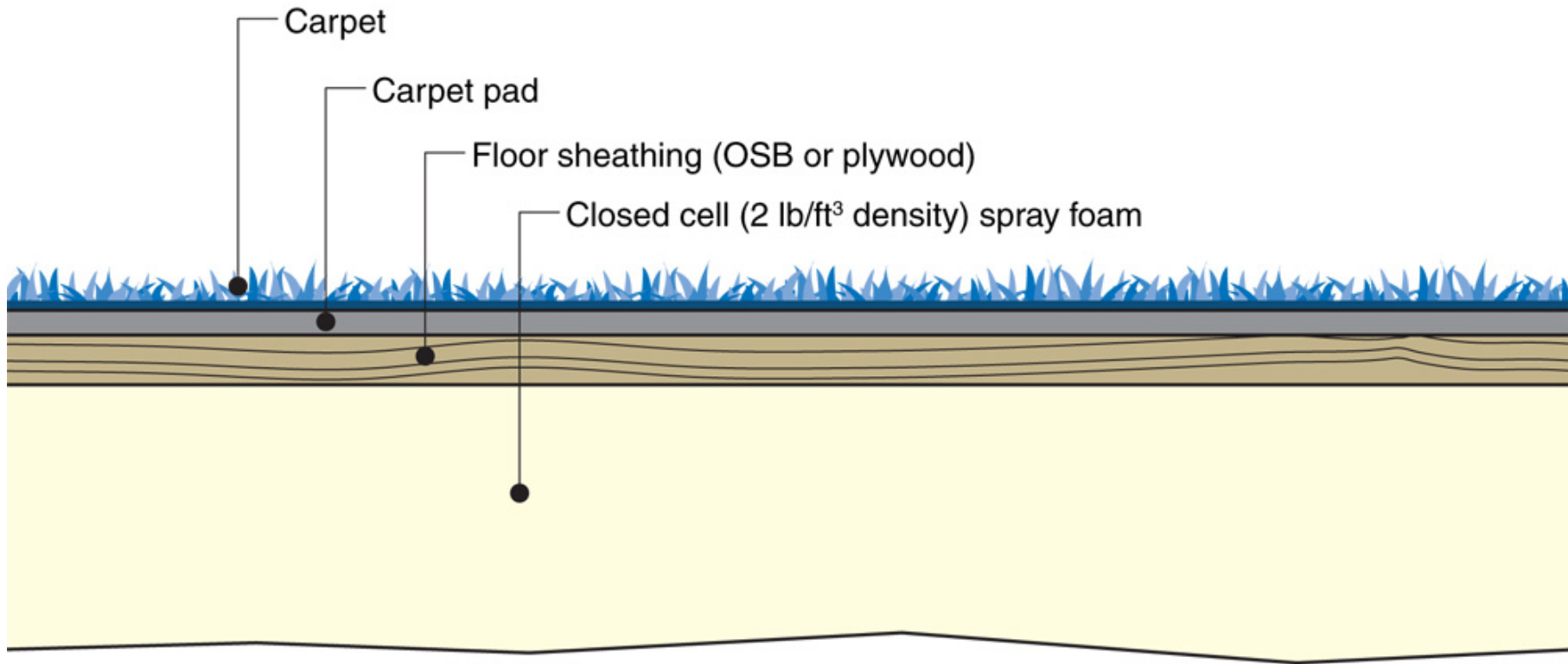


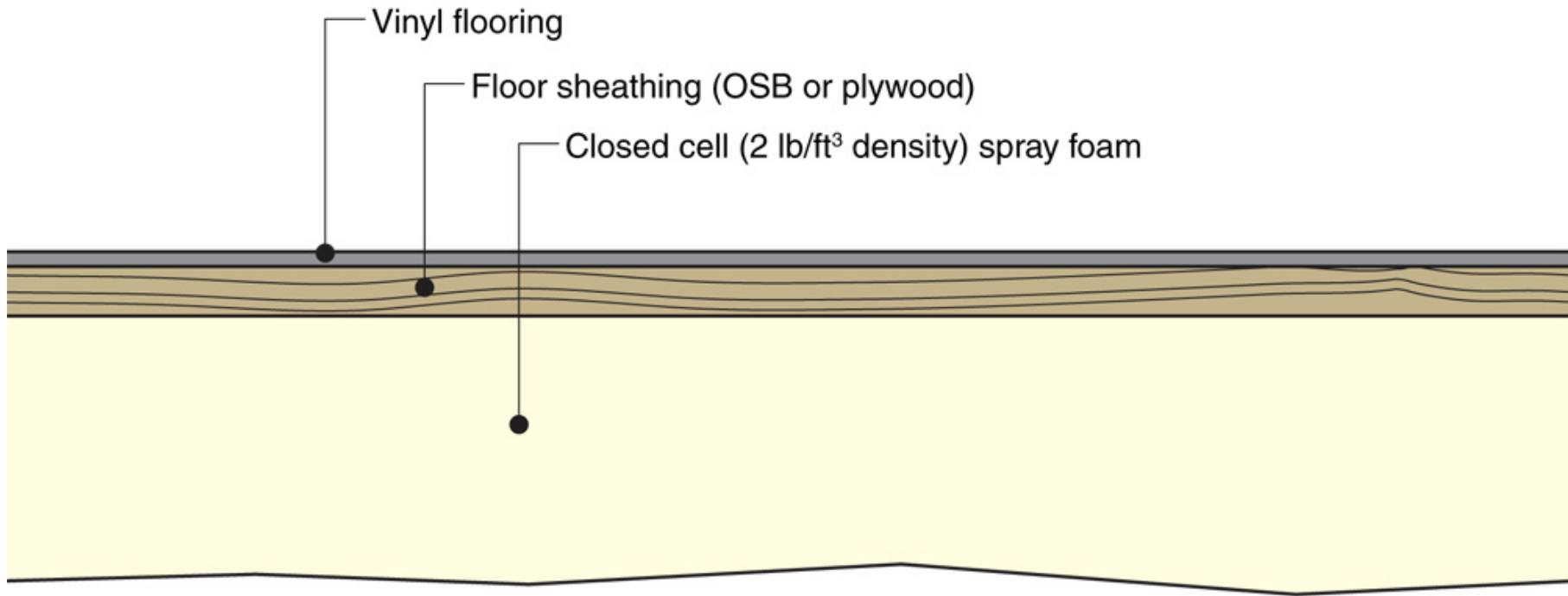


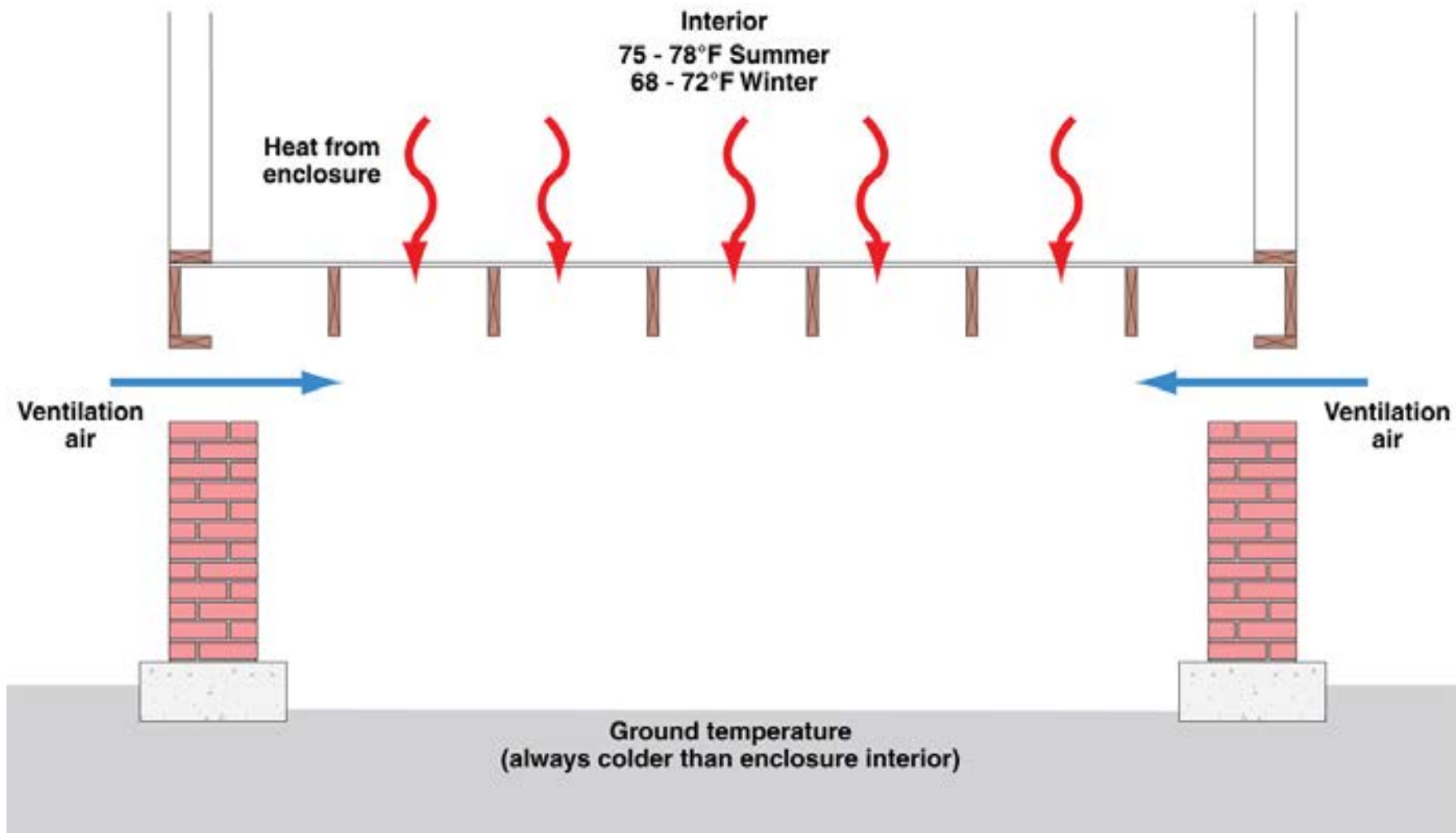


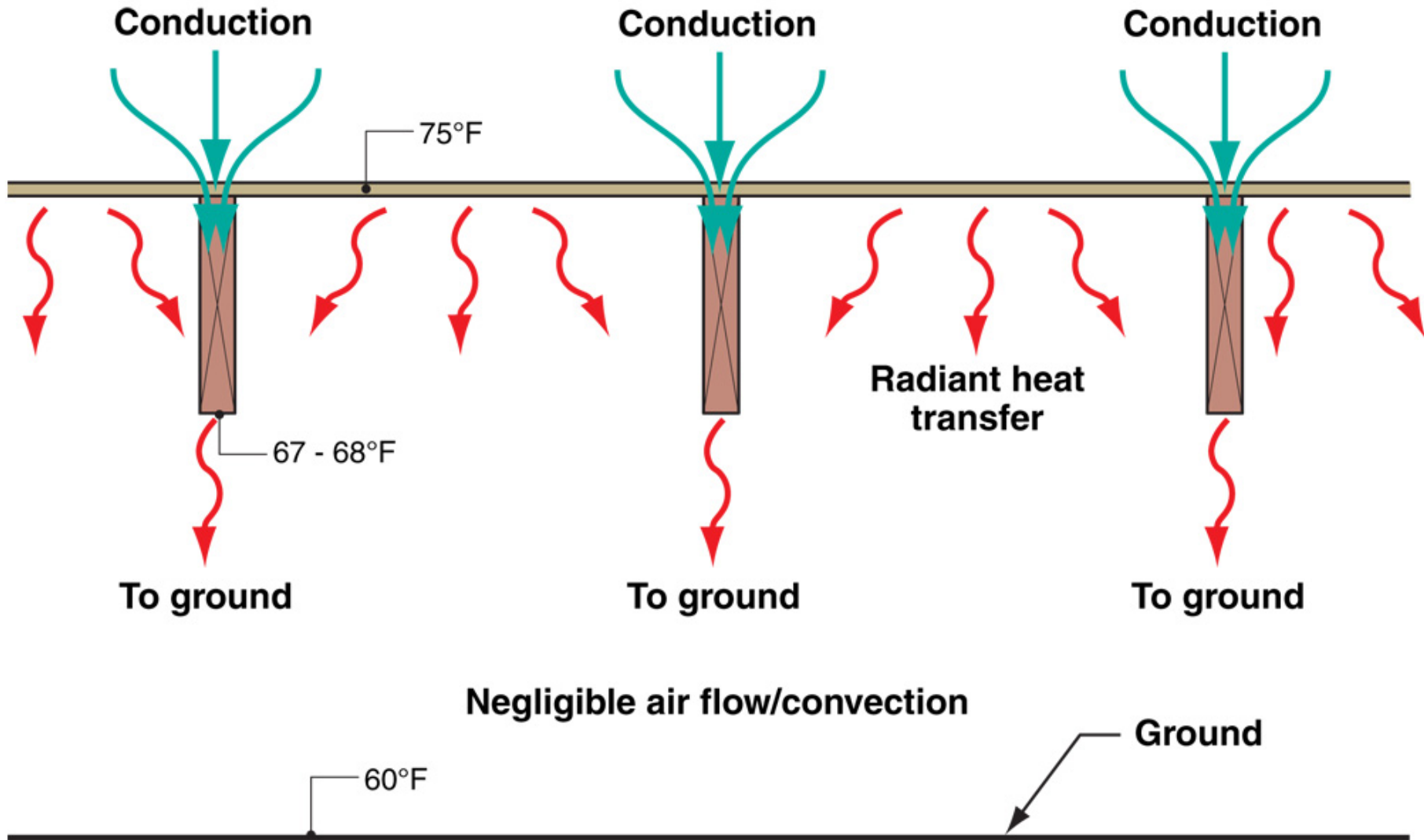


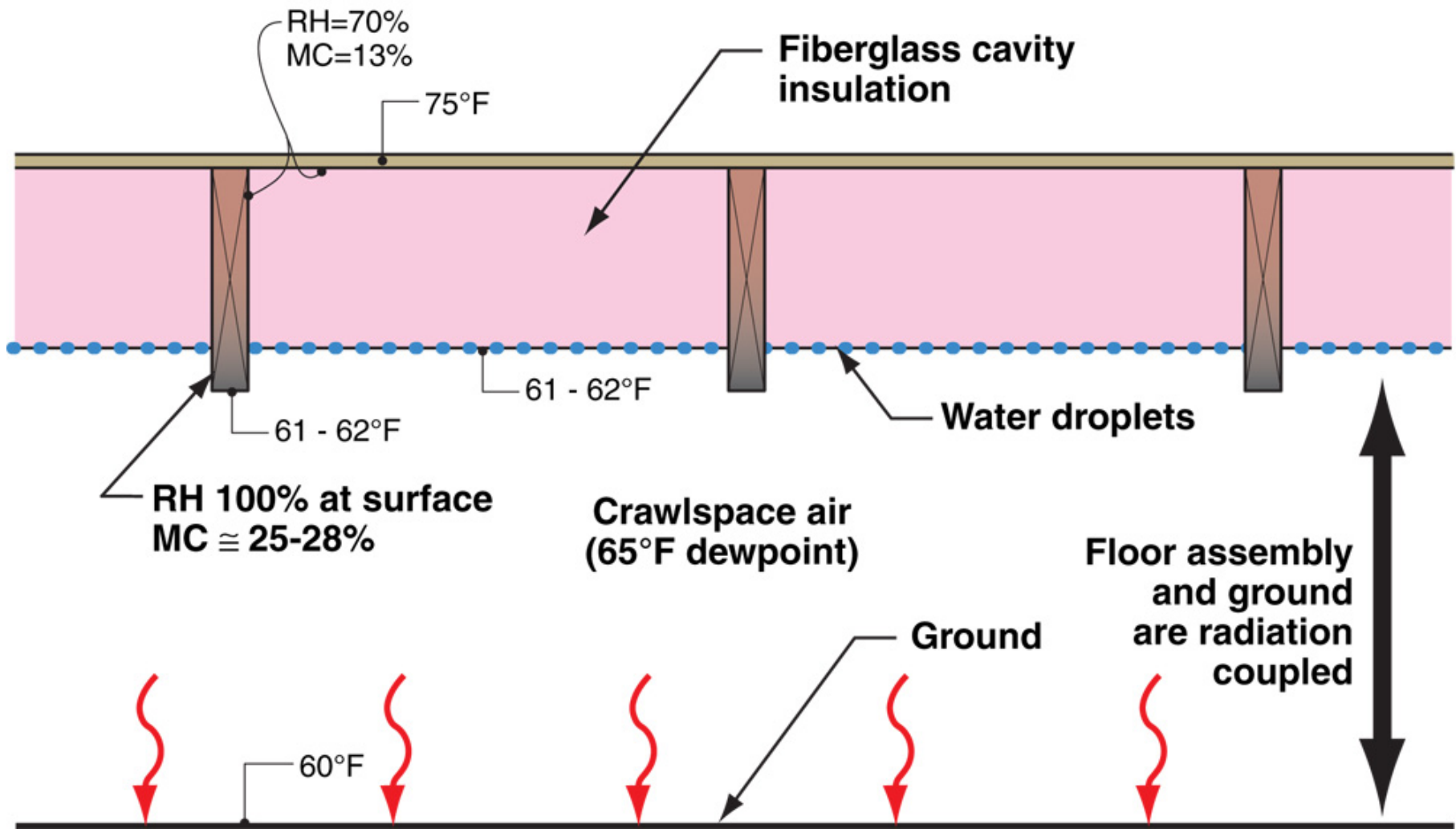


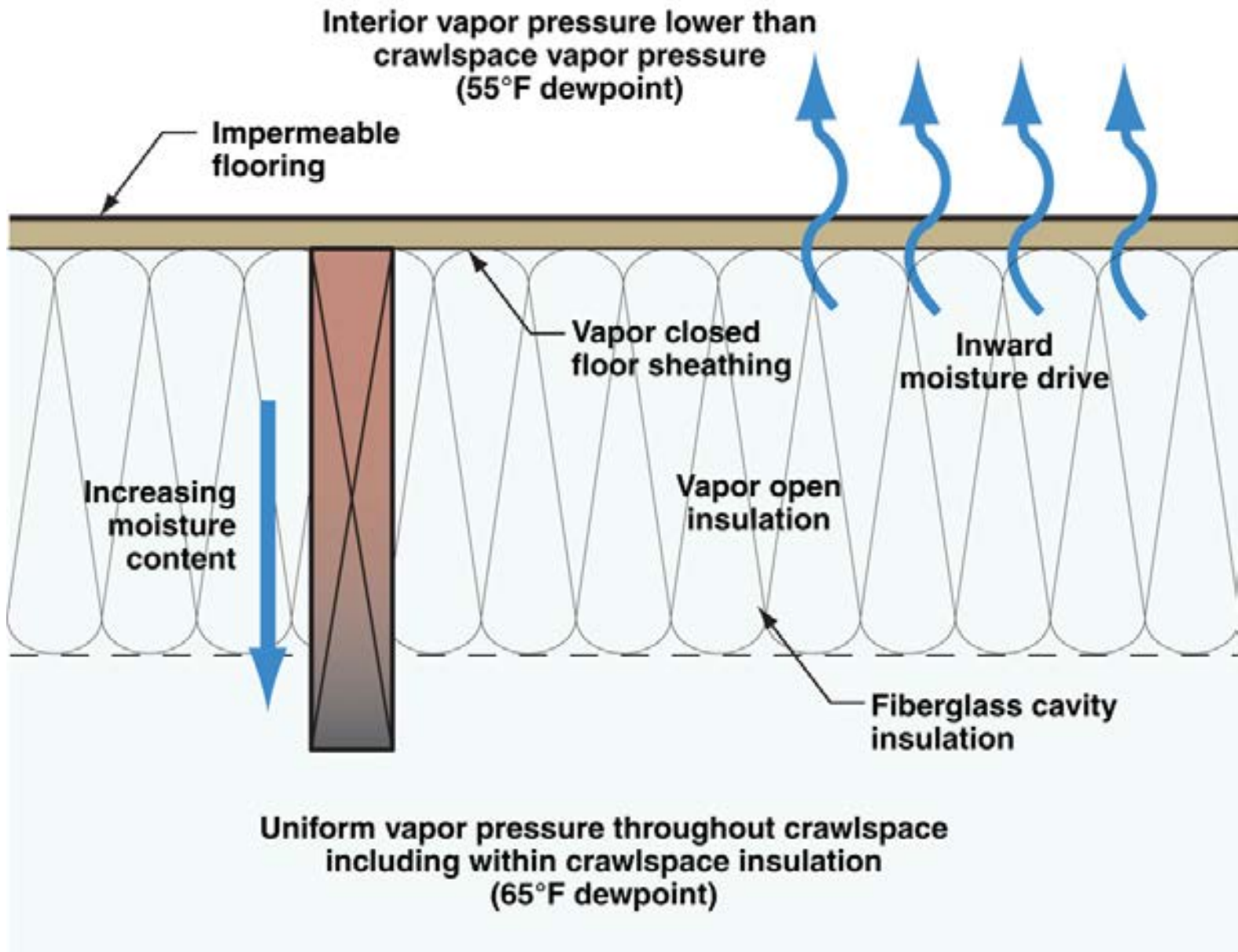






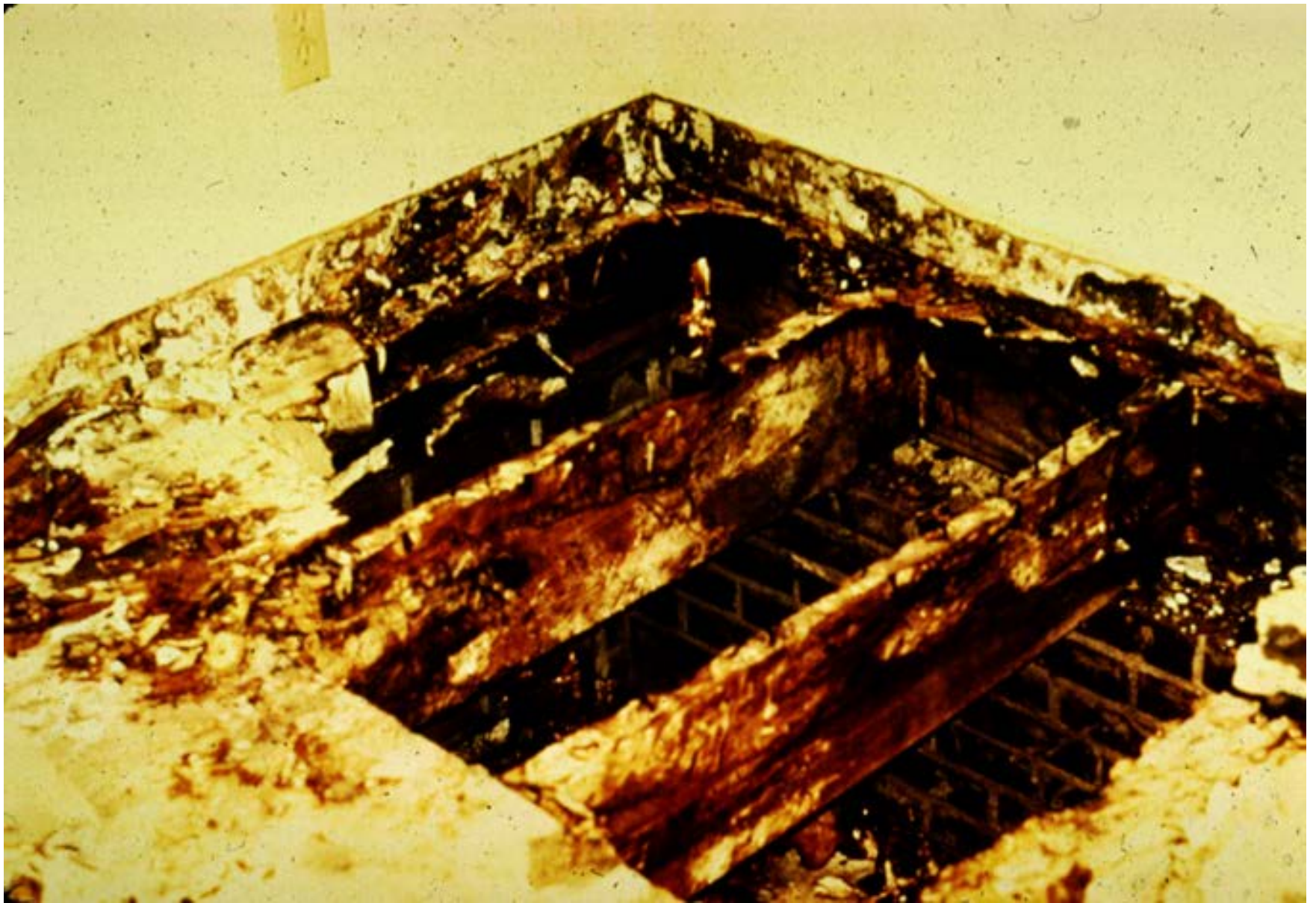
















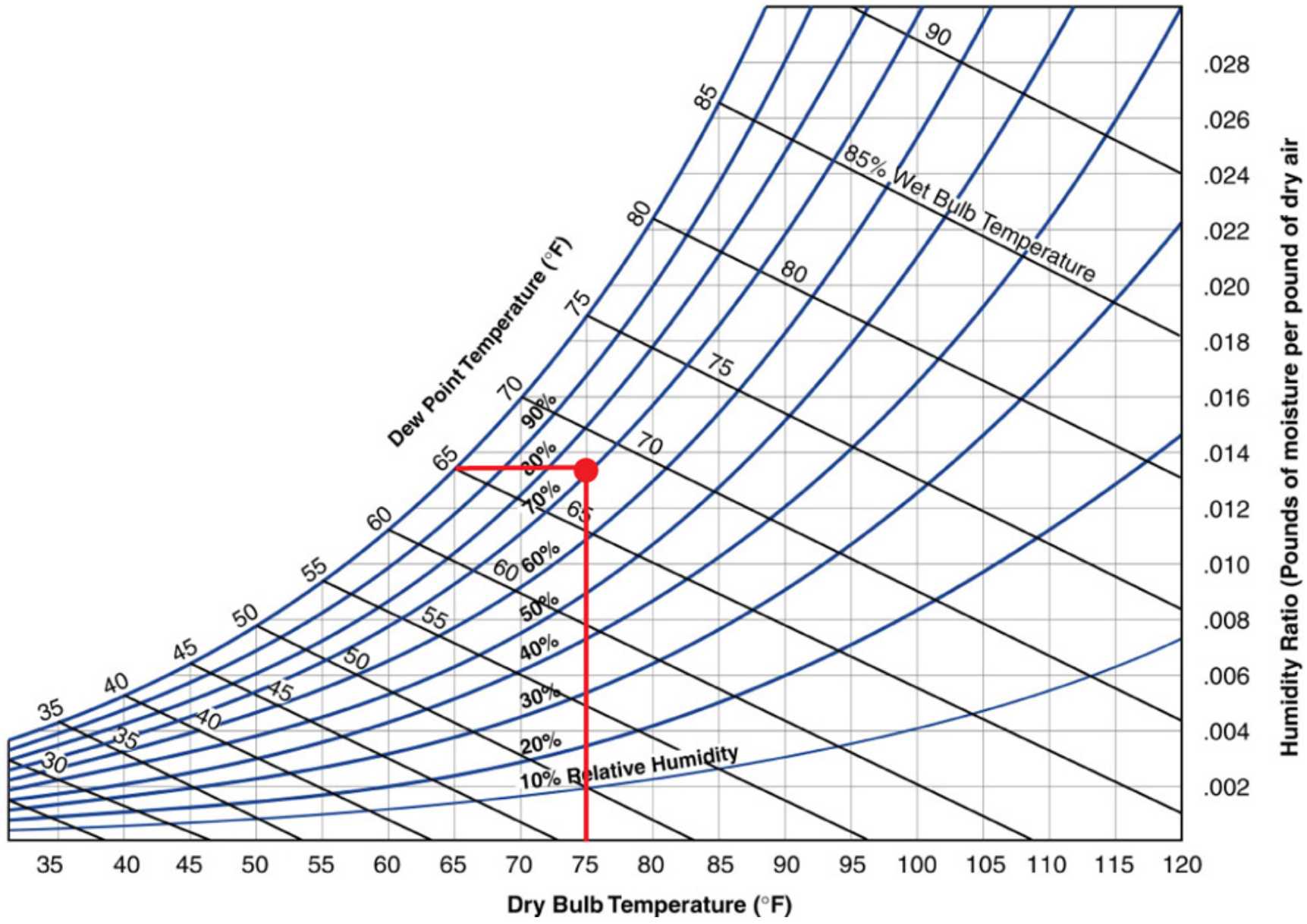


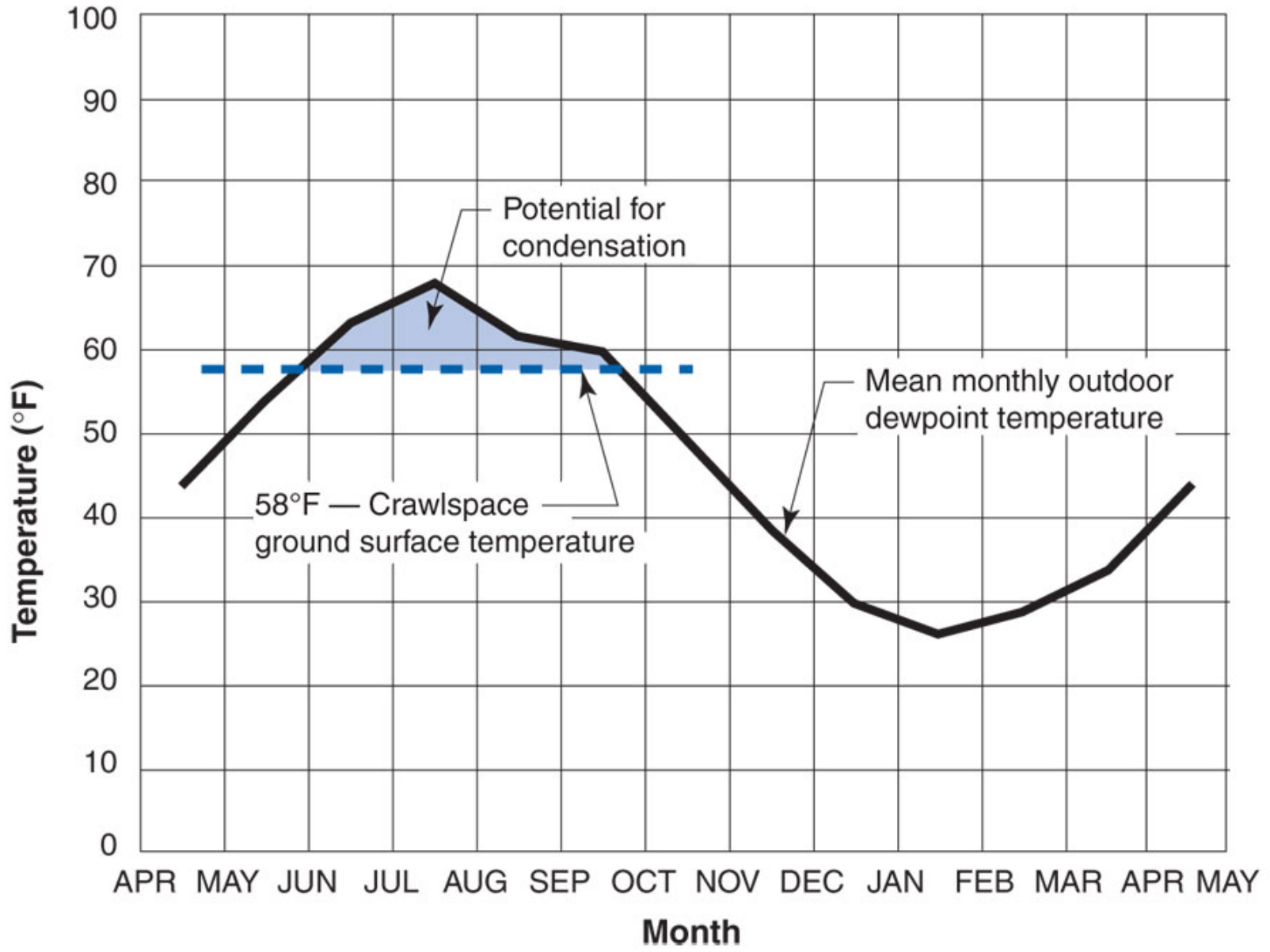




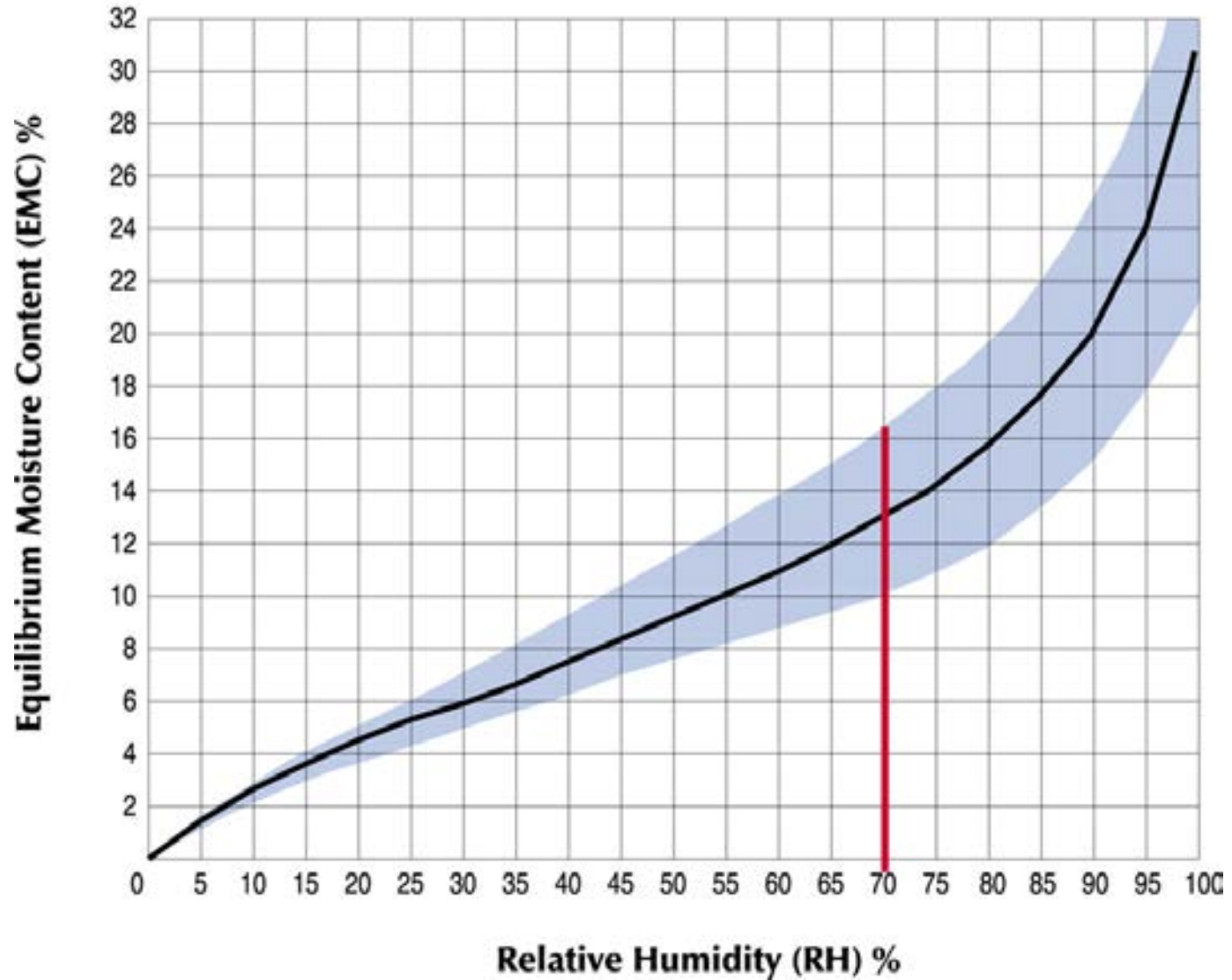




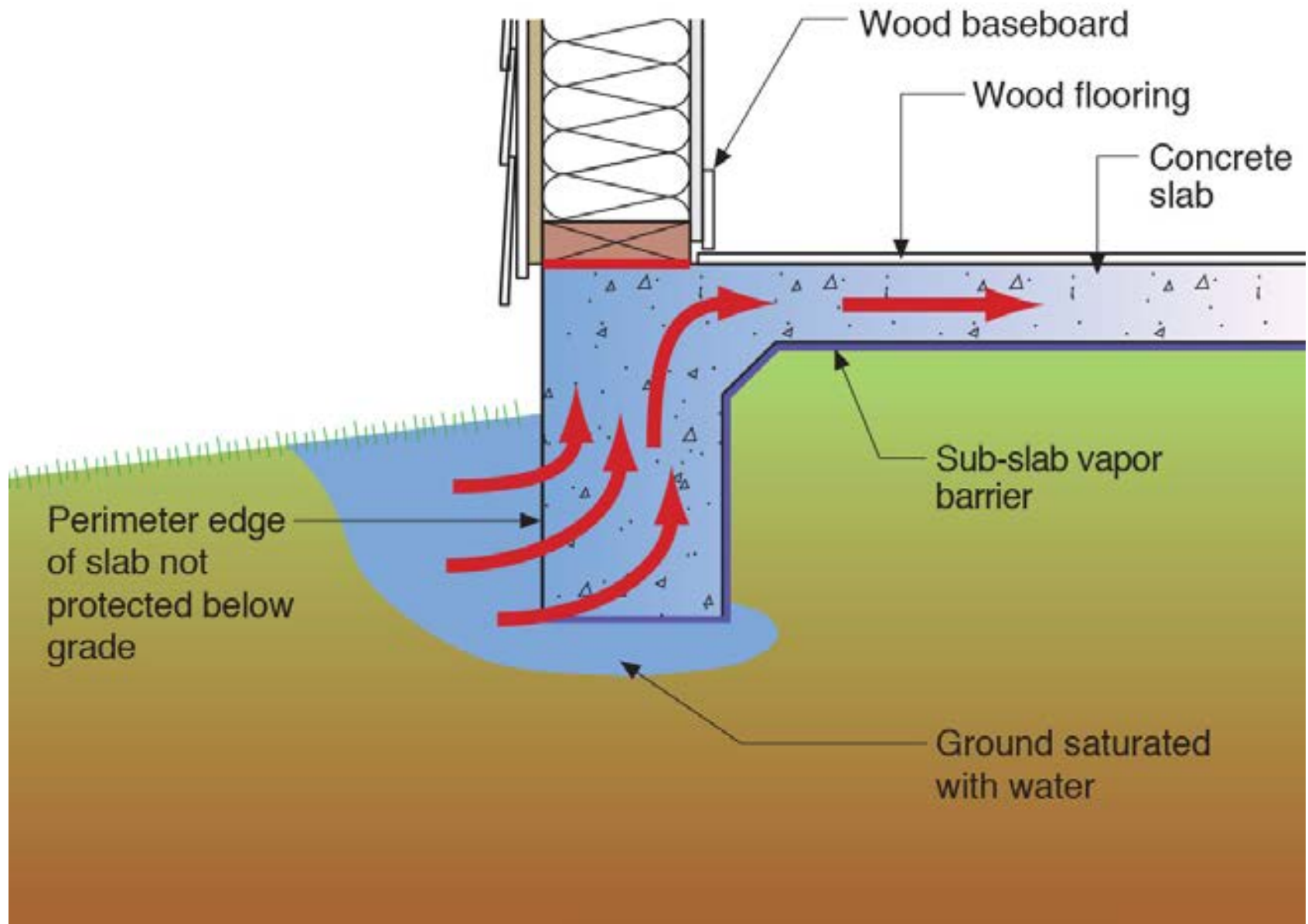




Moisture Content vs. Relative Humidity



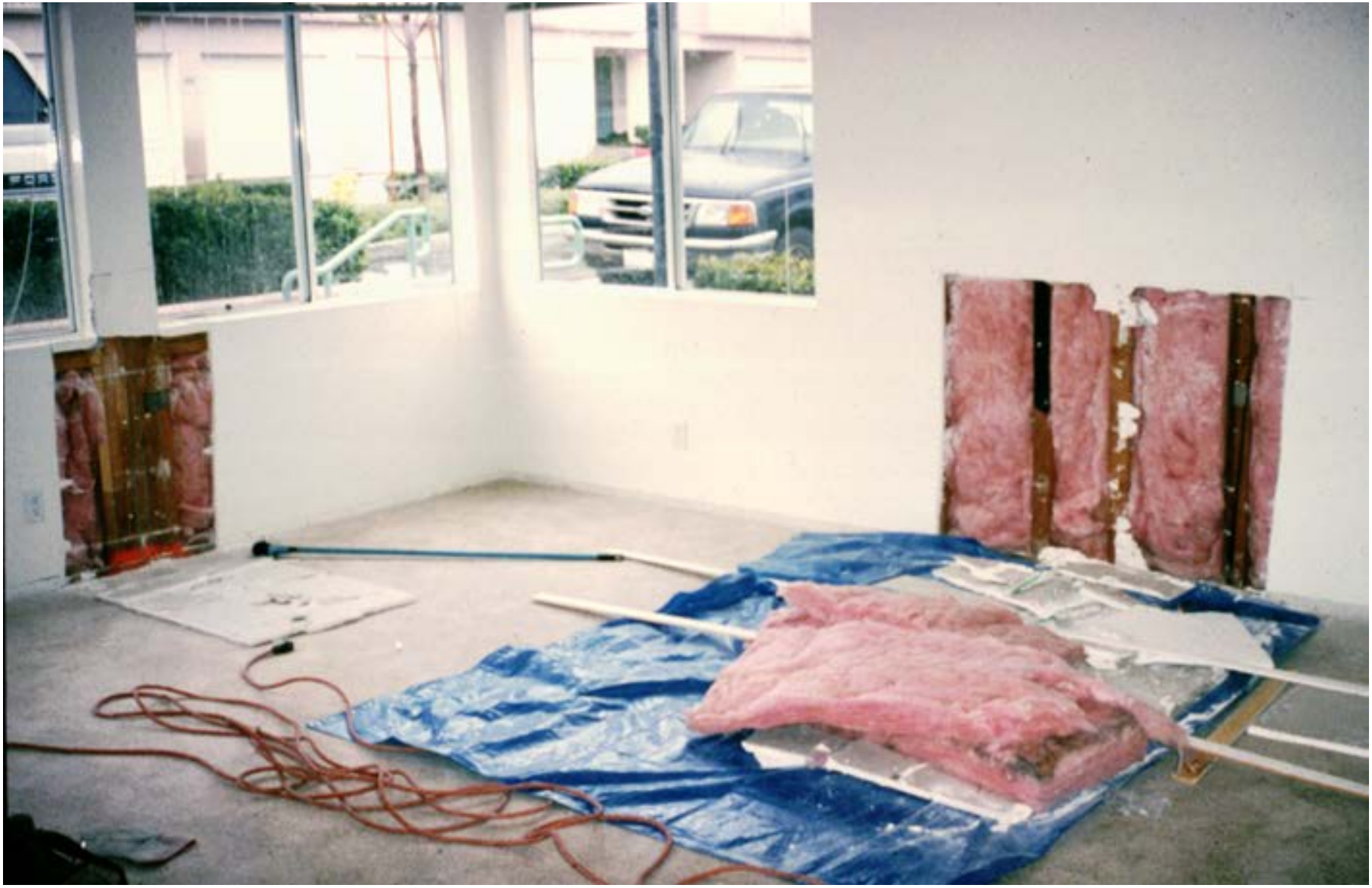
Slabs







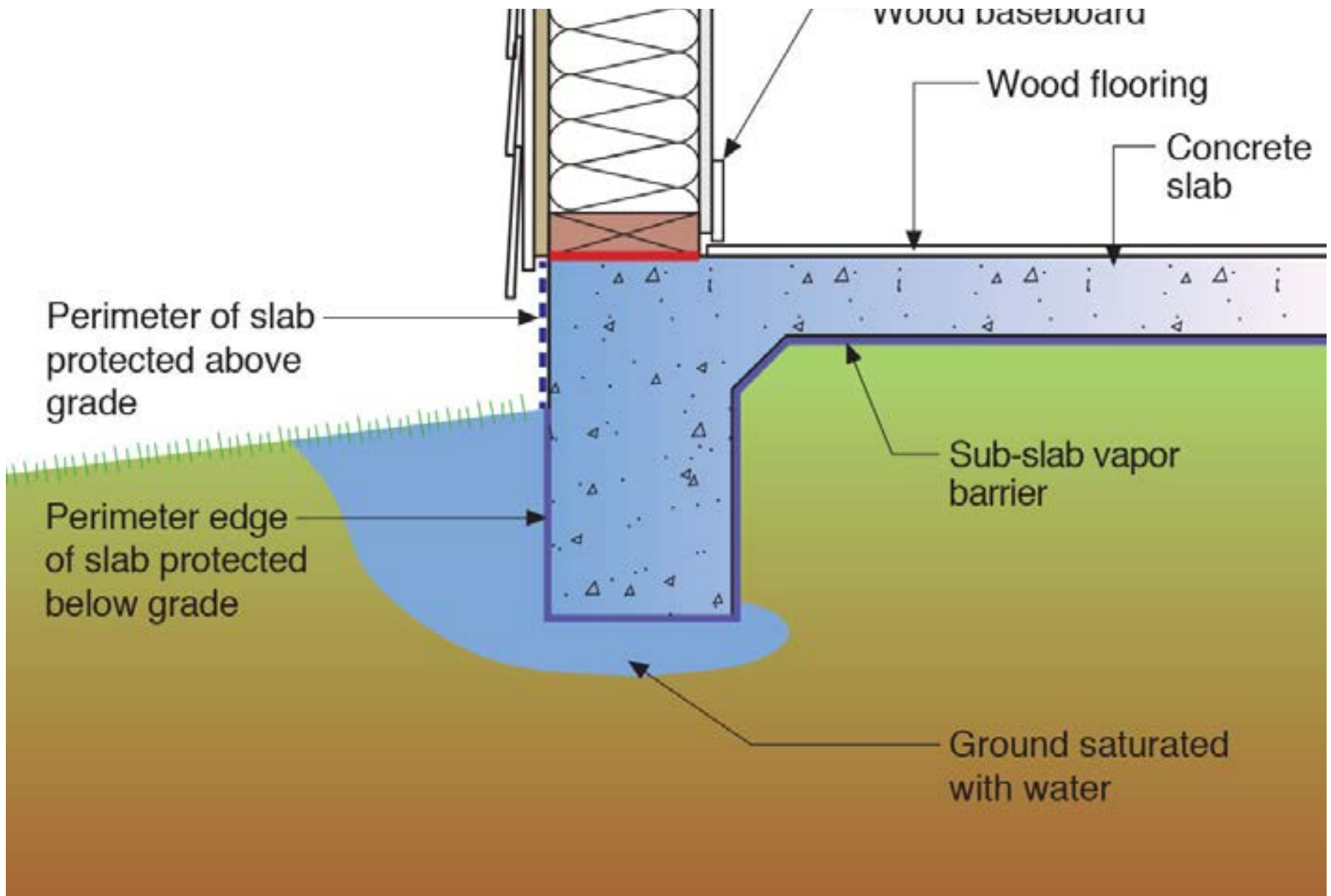


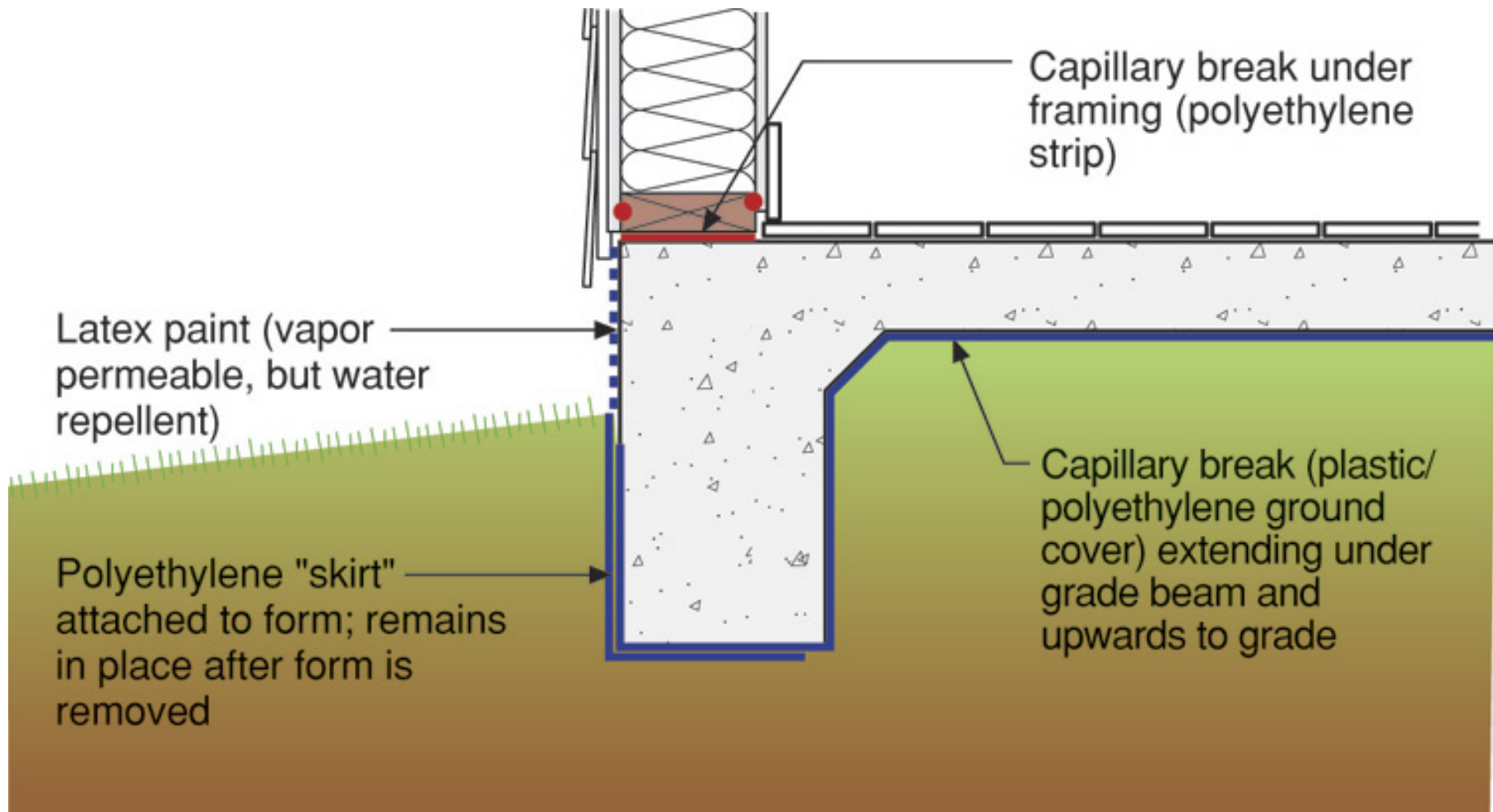










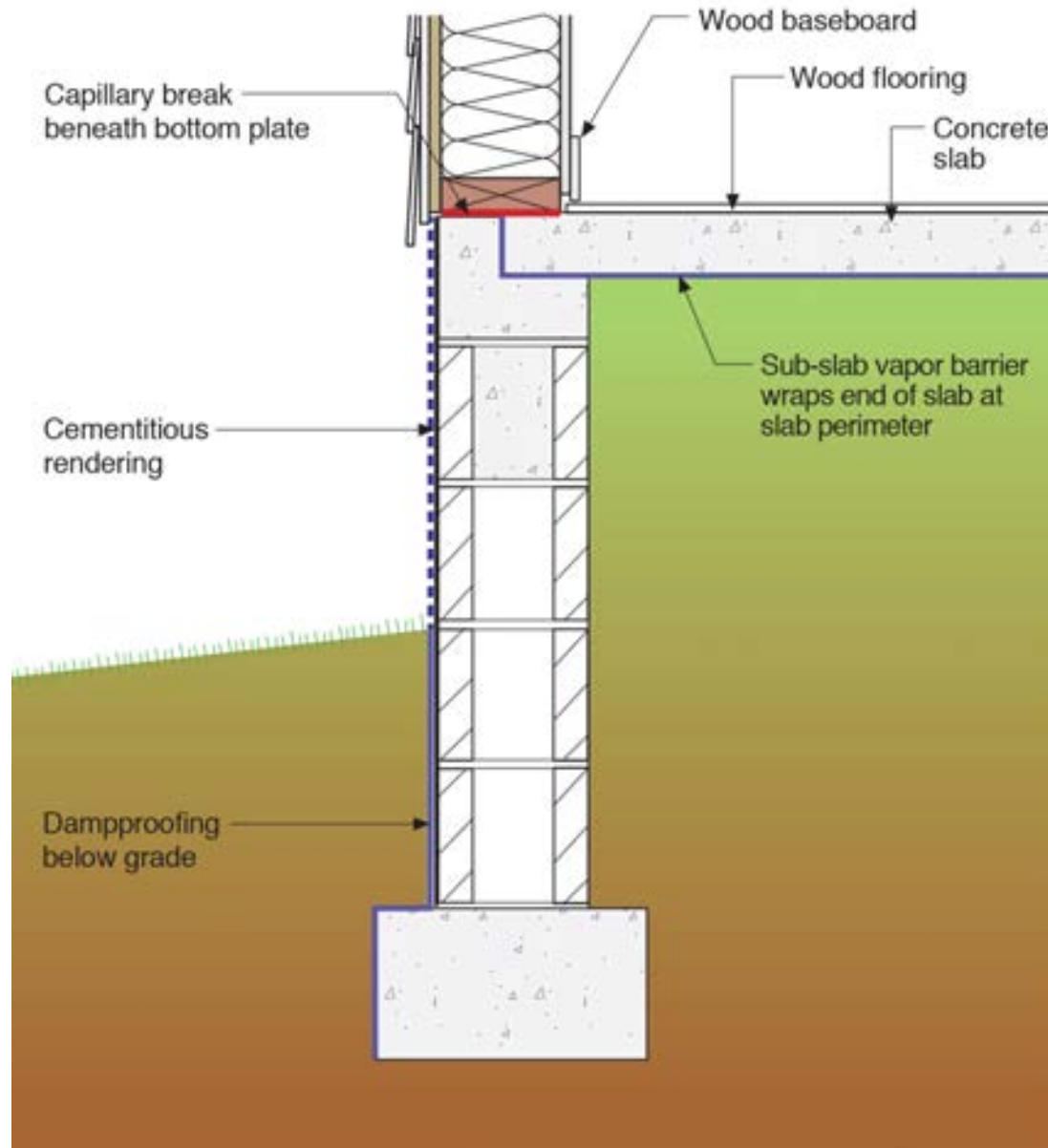








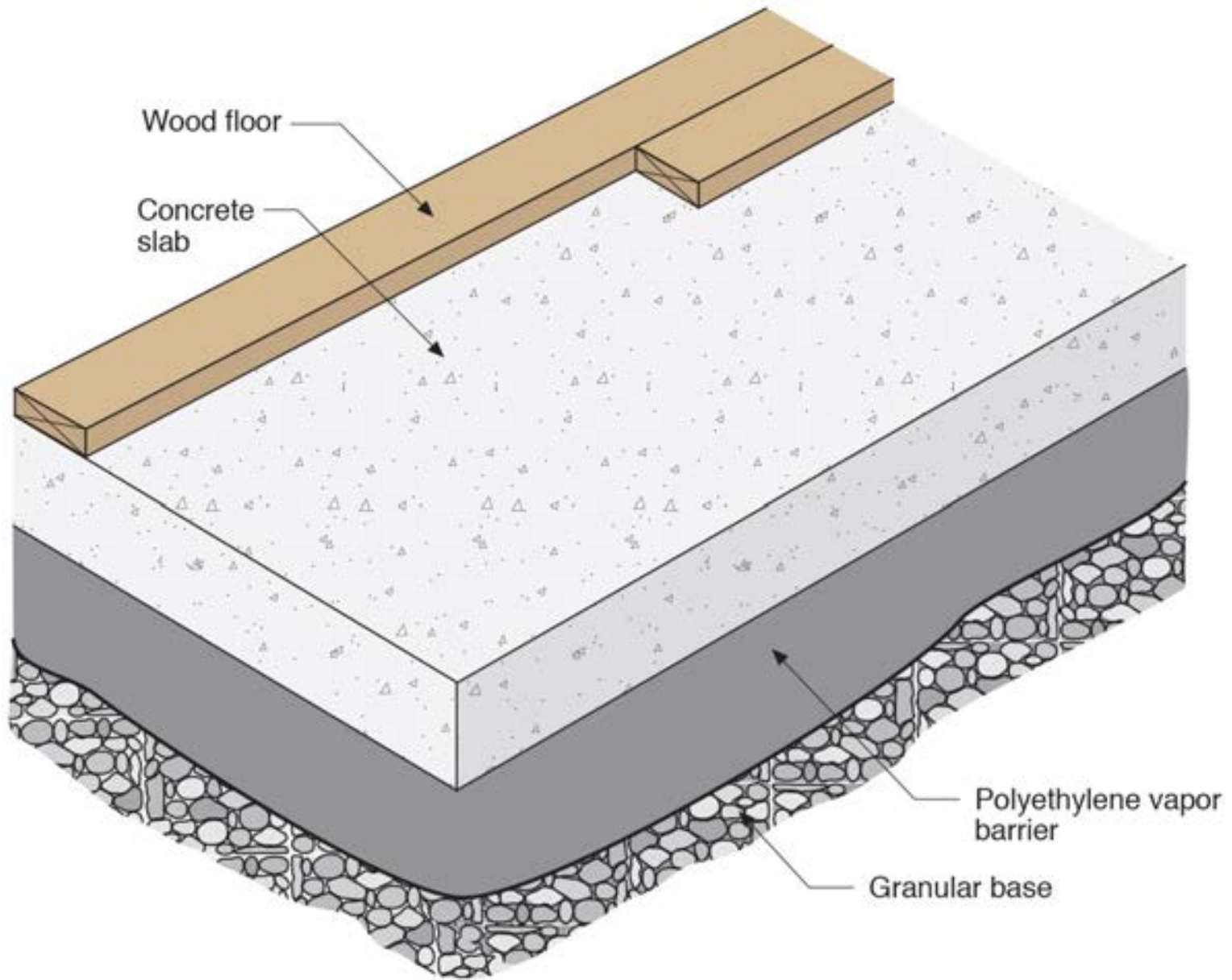


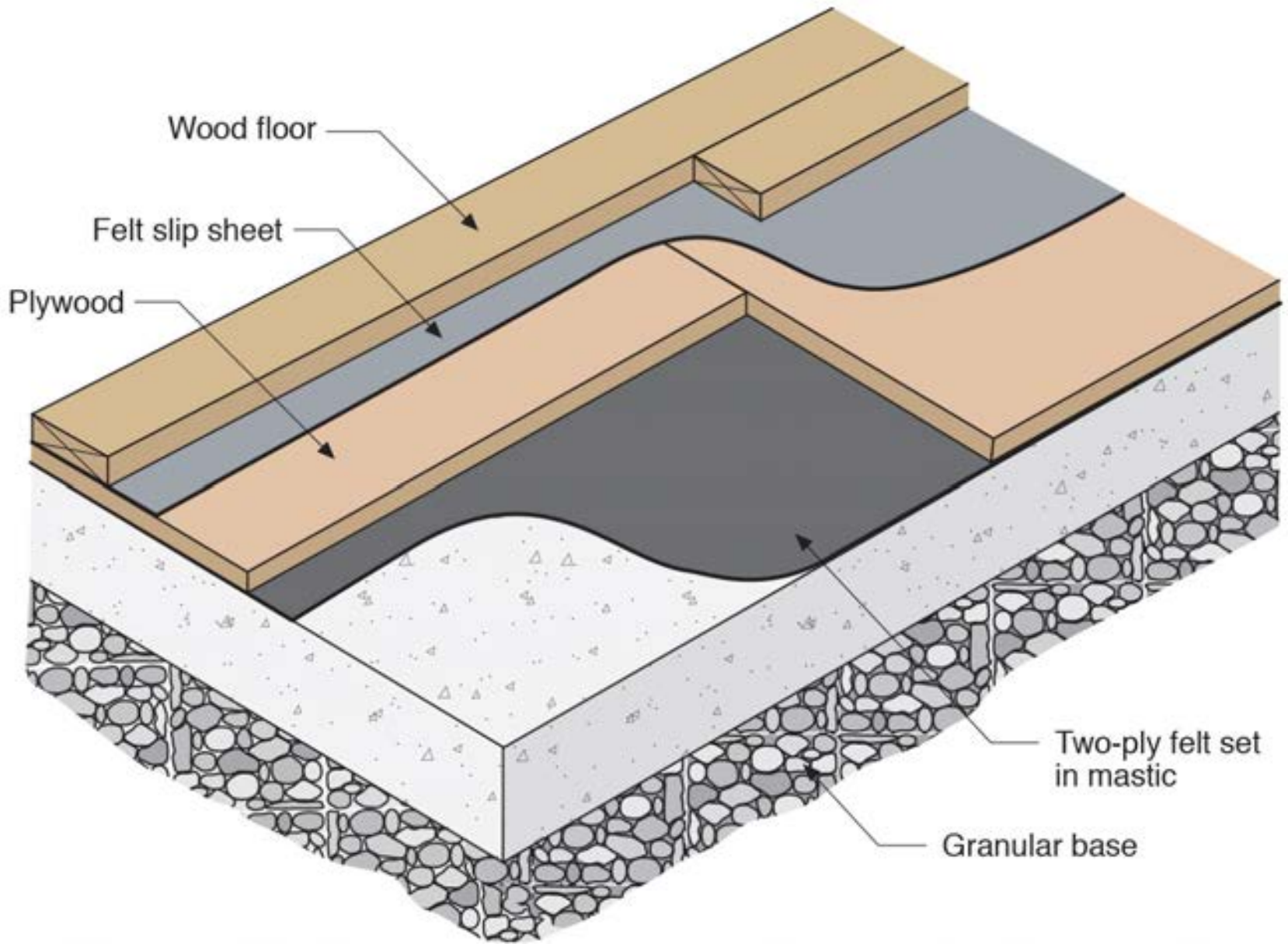




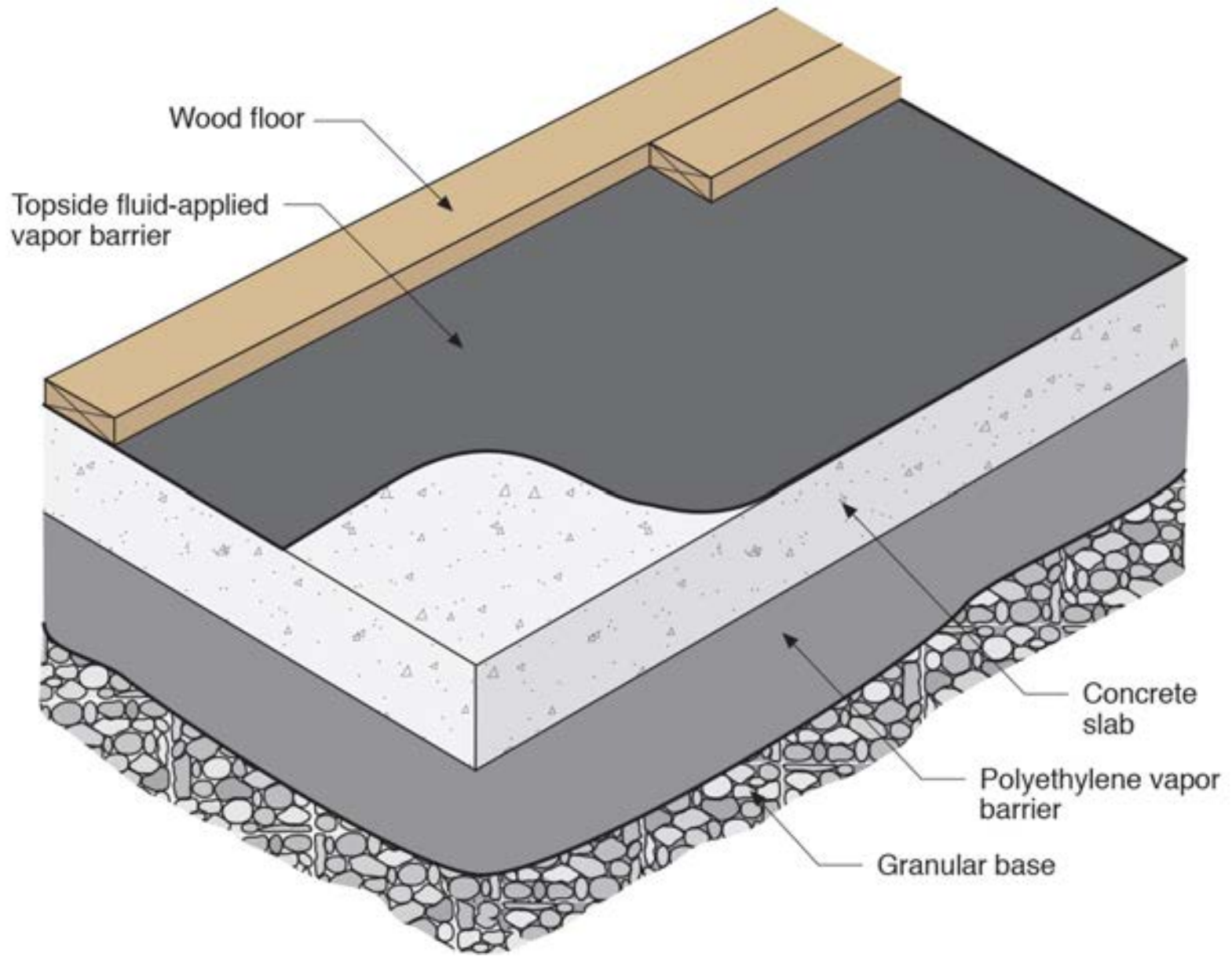






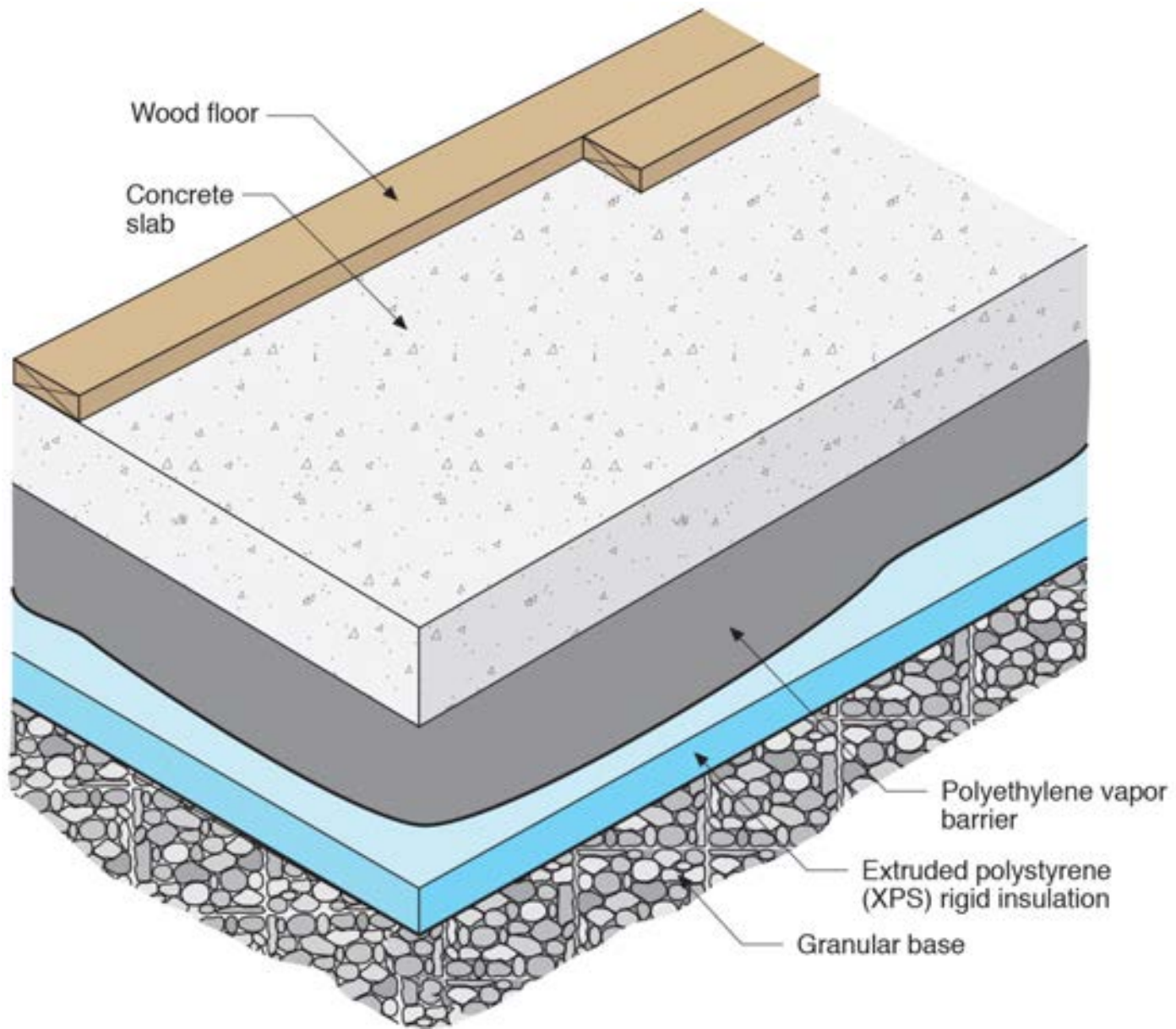




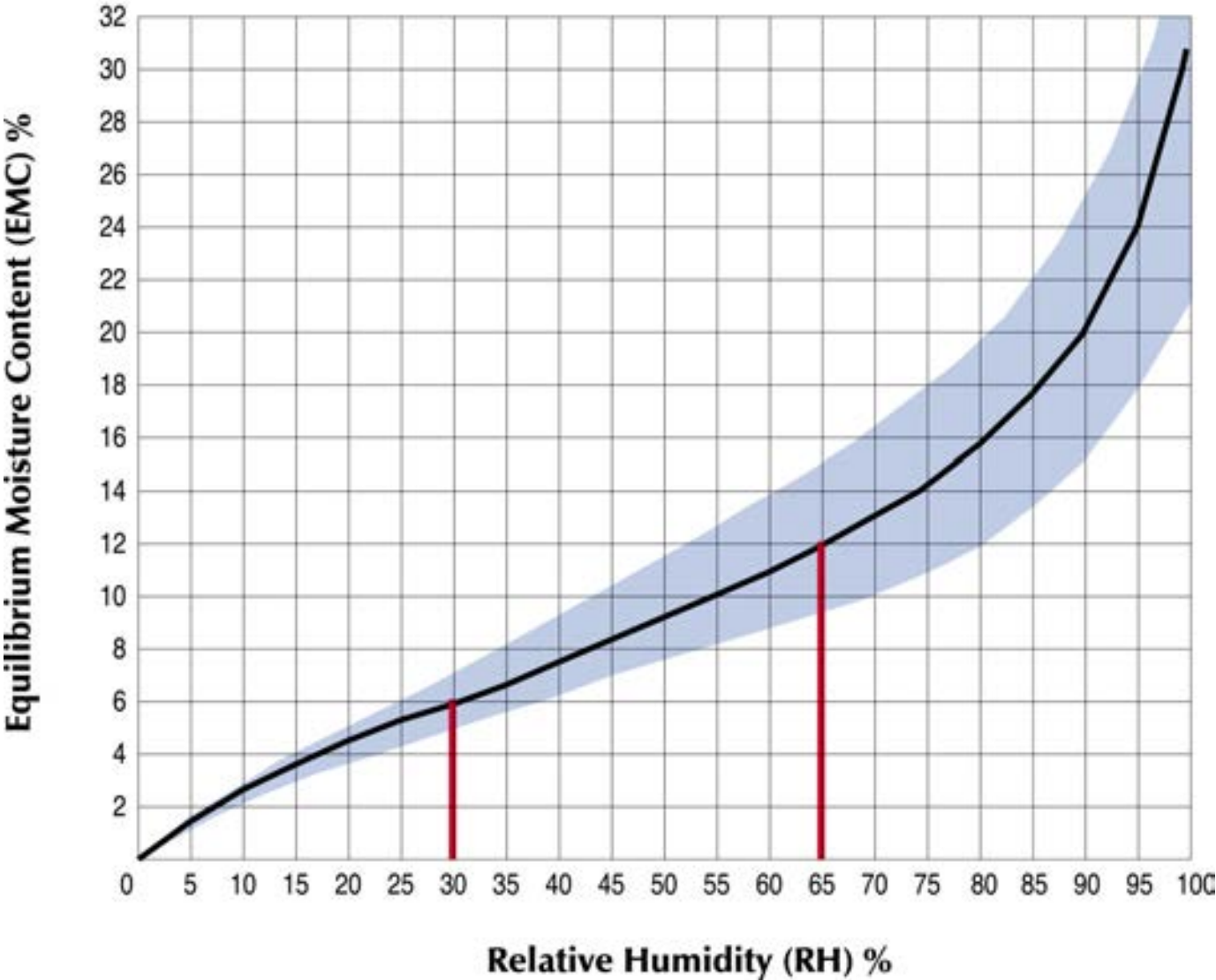


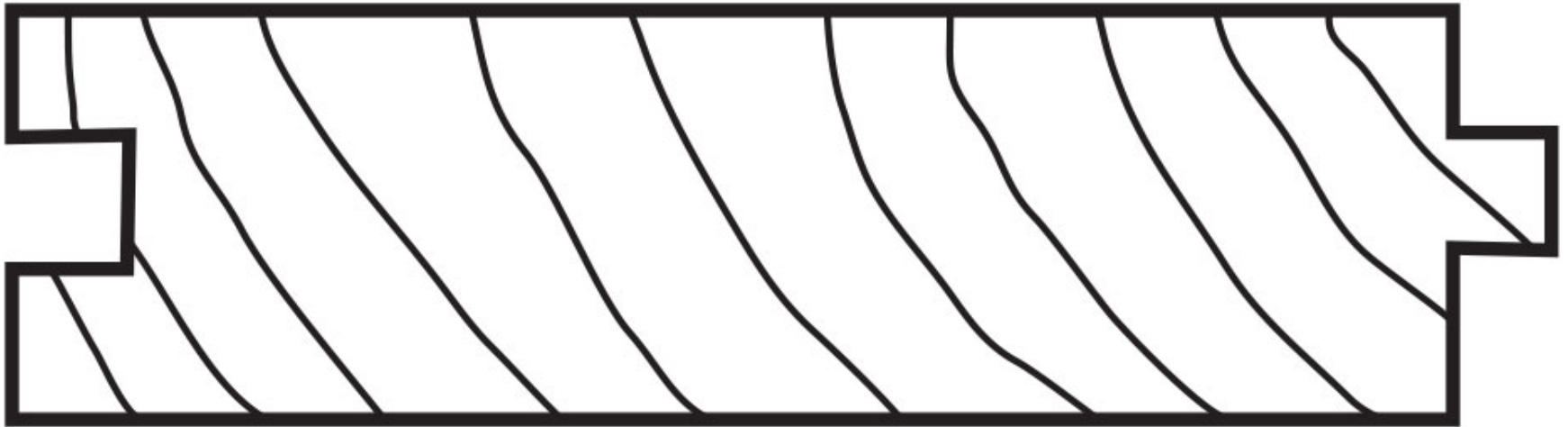






Moisture Content vs. Relative Humidity

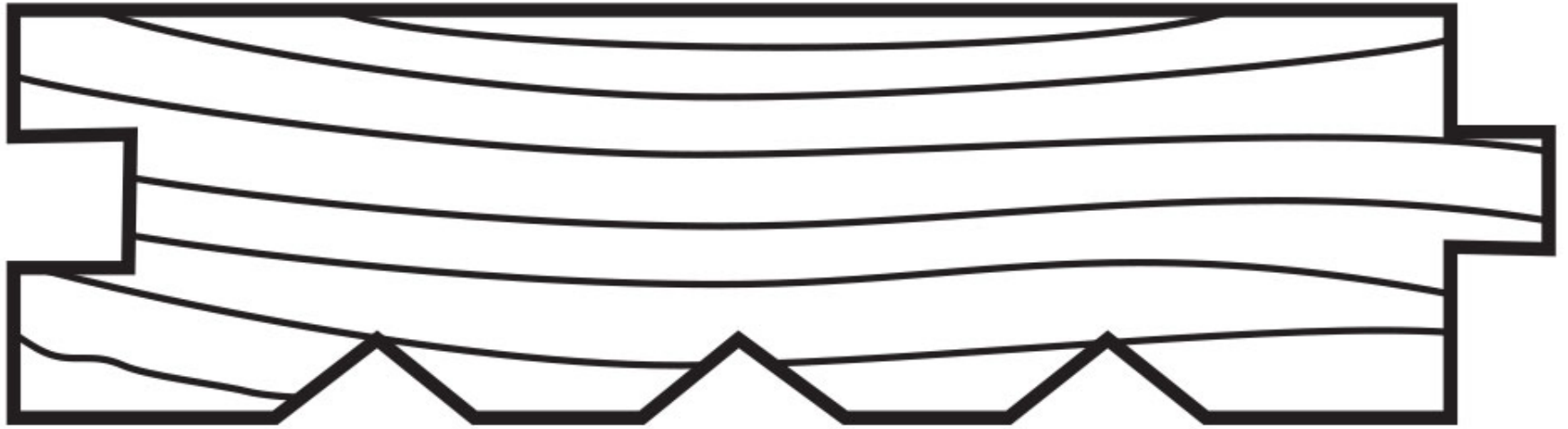




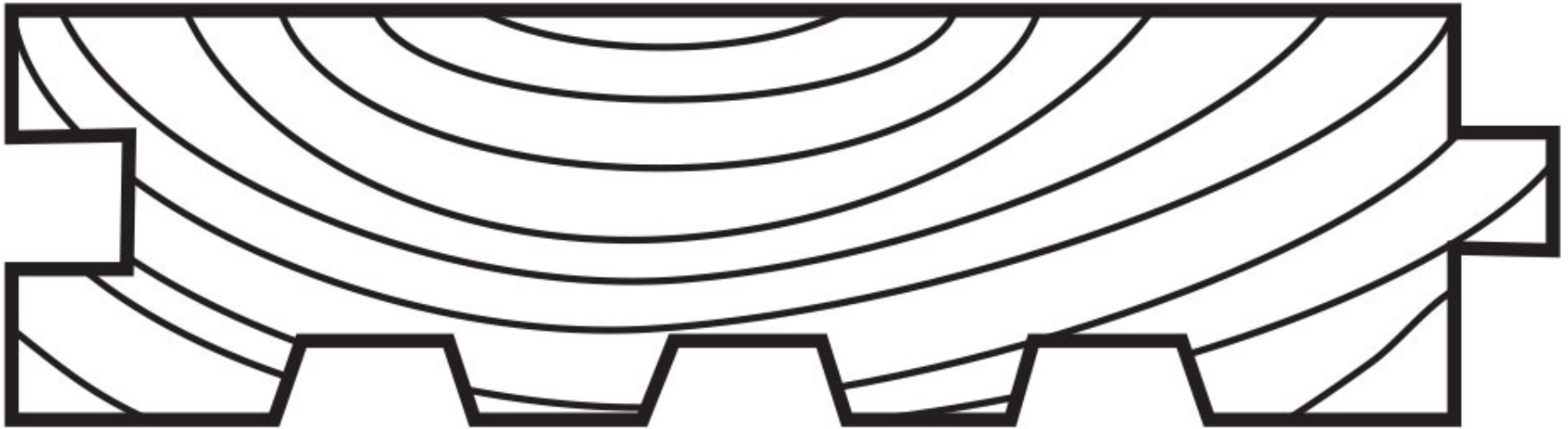
Plain



Hollow Back



Scratch Back



Hollow or Scratch Back



