

TRCC  
Continuing Education Attendance  
Form  
Section 4: Course Information  
Course Name: Using Wood Efficiently  
Course Number: 2008-04-0207  
Course Provider: Dr. Joseph Lstiburek  
Course Date: June 9, 2008  
CE Hours Credit: 4 hours  
Course Location: Houston, TX

Section 6:  
Continuing Education Type: General or Texas Star Builder

Building Science Corporation  
2008

Handouts can be downloaded from:  
[www.buildingscience.com](http://www.buildingscience.com)

Go from there to:  
[www.buildingscienceseminars.com](http://www.buildingscienceseminars.com)

And get the handouts for 16 one hour modules  
Also pdf's of the powerpoints can be obtained from:  
[www.buildingscienceseminars.com/fundamentals/2008/presentations](http://www.buildingscienceseminars.com/fundamentals/2008/presentations)

Building Science Corporation  
2008

Joseph Lstiburek, 2

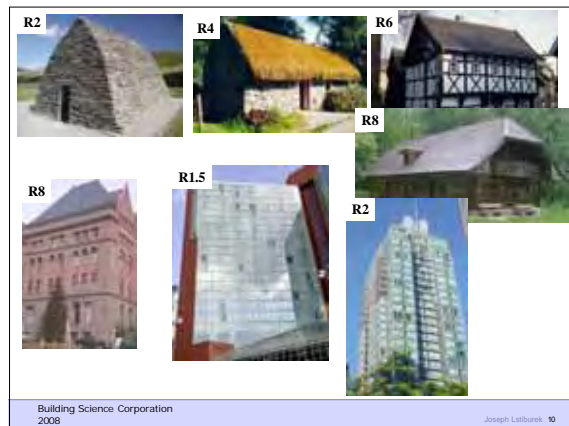
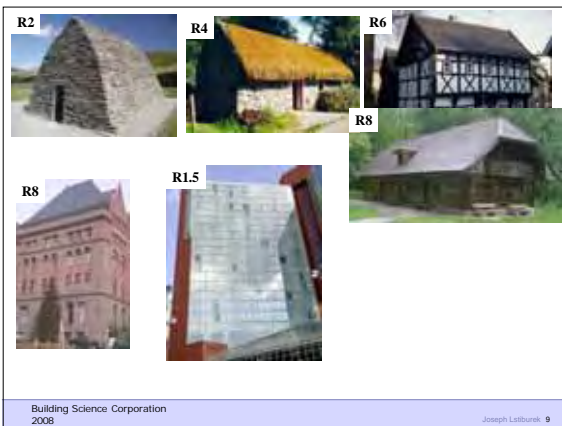
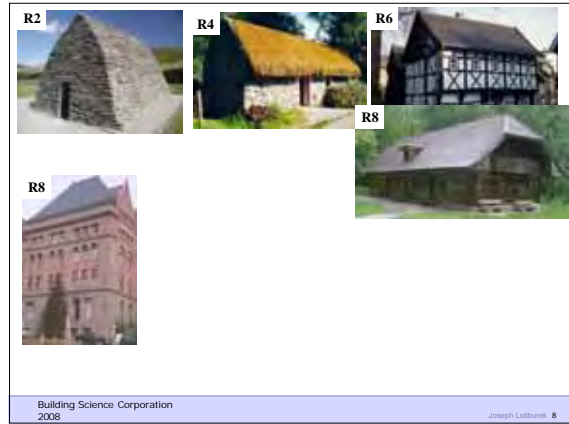
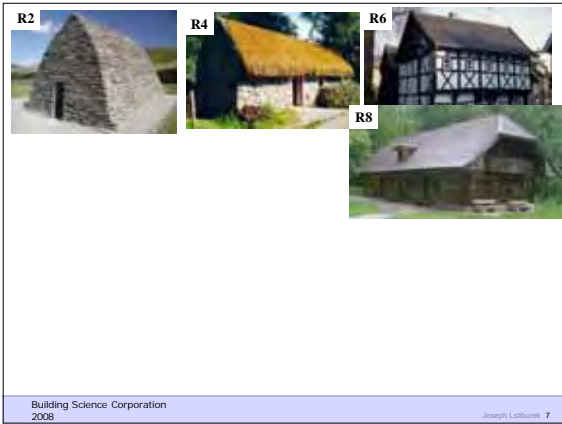
Joseph Lstiburek, Ph.D., P.Eng., ASHRAE Fellow

Building Science

The Perfect Wall

[www.buildingscience.com](http://www.buildingscience.com)

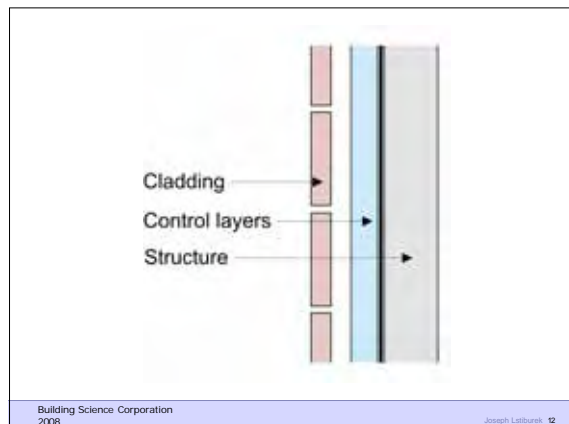




Don't Do Stupid Things

Building Science Corporation  
2008

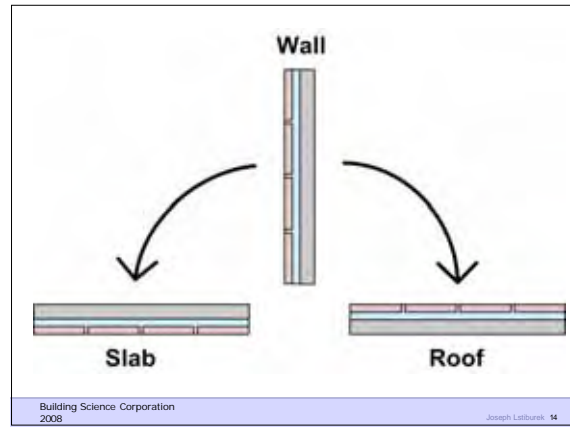
Joseph Lutzburk 11



Rain Control Layer  
Air Control Layer  
Vapor Control Layer  
Thermal Control Layer

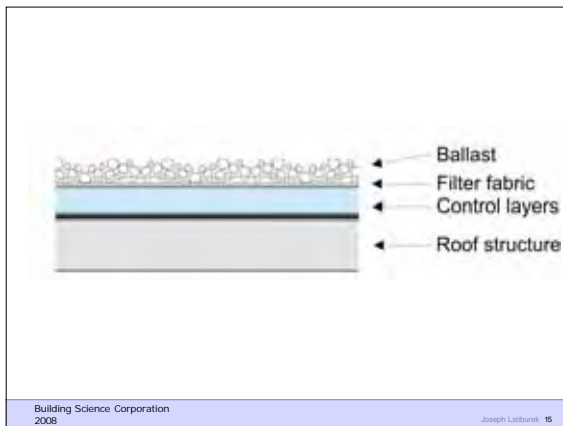
Building Science Corporation  
2008

Joseph Labaree 13



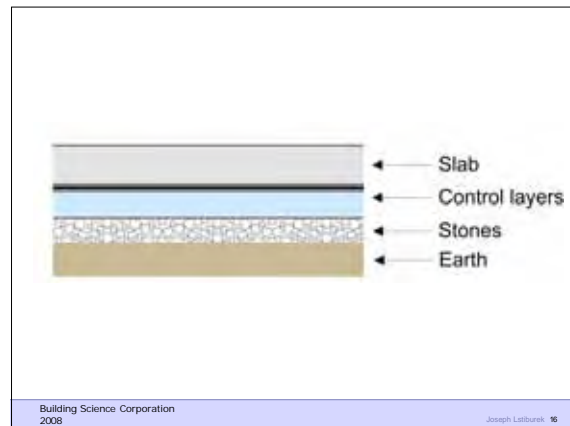
Building Science Corporation  
2008

Joseph Labaree 14



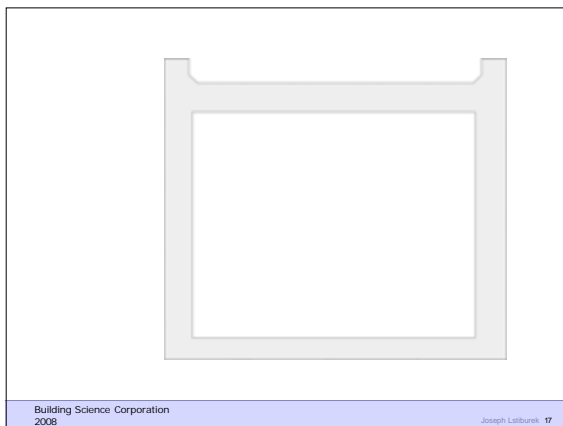
Building Science Corporation  
2008

Joseph Labaree 15



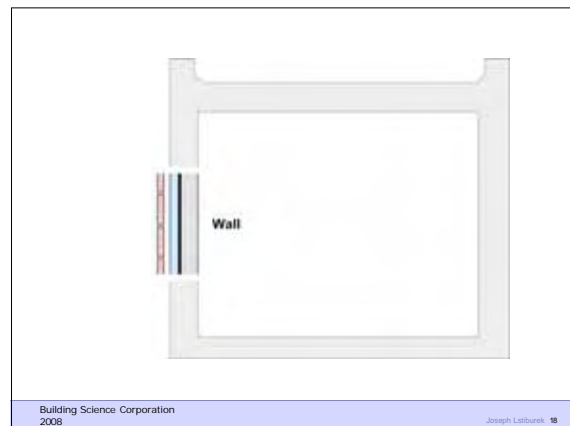
Building Science Corporation  
2008

Joseph Labaree 16



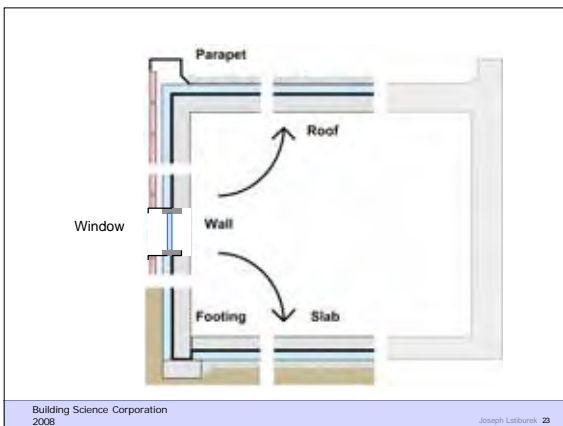
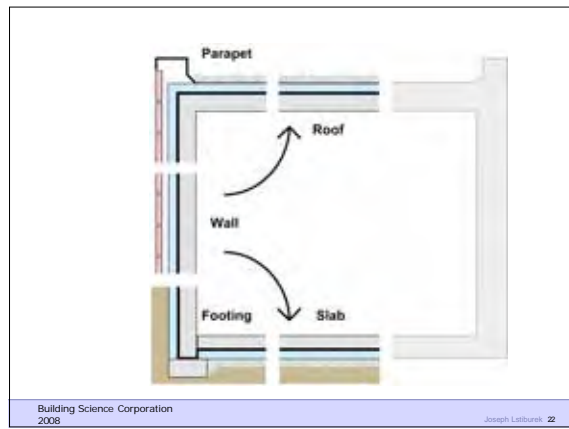
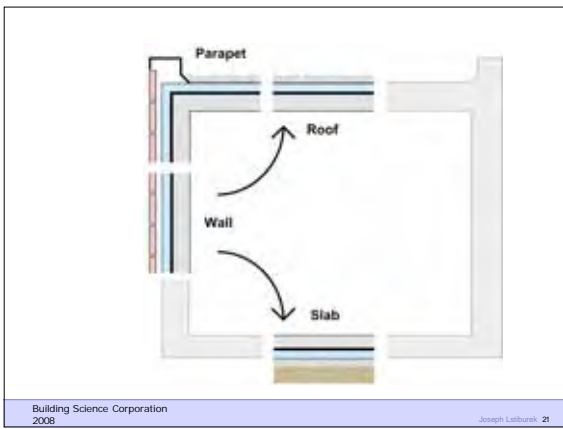
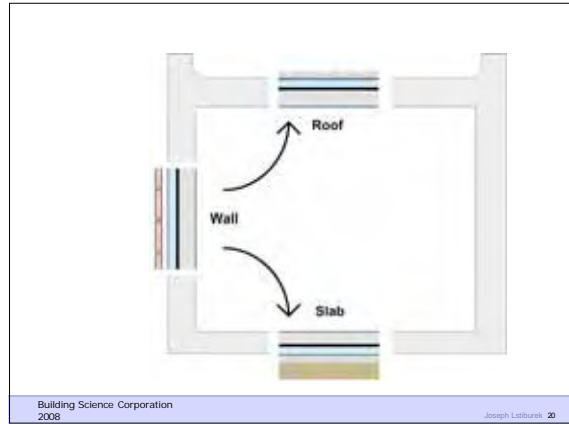
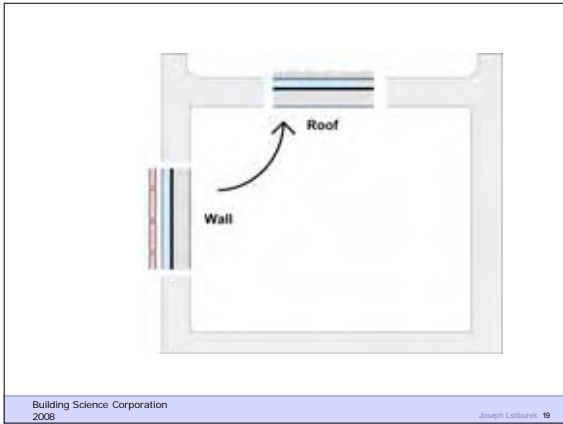
Building Science Corporation  
2008

Joseph Labaree 17



Building Science Corporation  
2008

Joseph Labaree 18




### Commercial Enclosure: Simple Layers

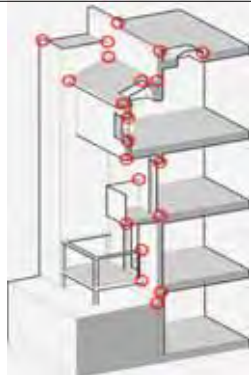
- Structure
- Rain/Air/Vapor
- Insulation
- Finish

Building Science Corporation  
2008

Joseph Labaree 24

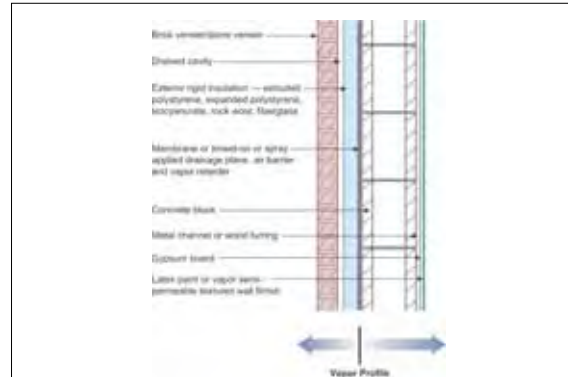
## Enclosure Design: Details

- Details demand the same approach as the enclosure.
- Scaled drawings required at 



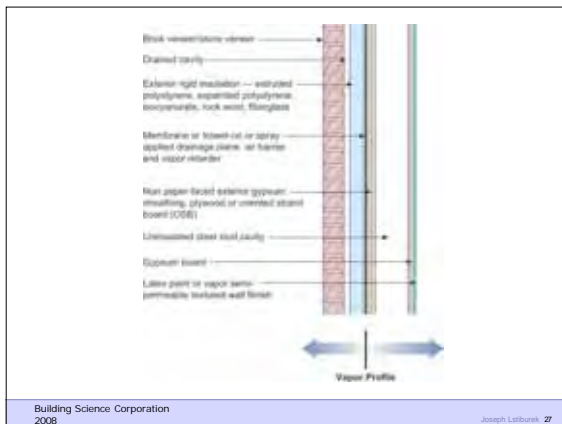
Building Science Corporation  
2008

Joseph Labaree 25



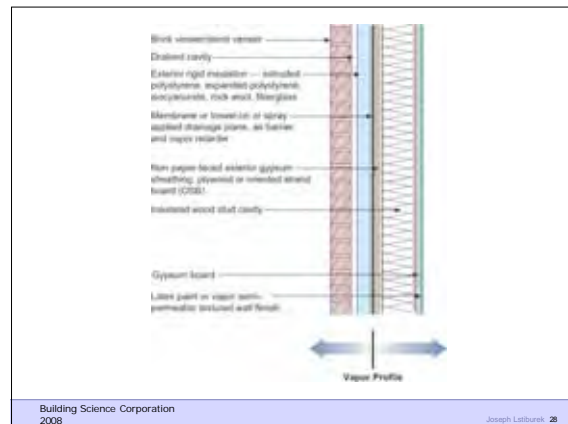
Building Science Corporation  
2008

Joseph Labaree 26



Building Science Corporation  
2008

Joseph Labaree 27



Building Science Corporation  
2008

Joseph Labaree 28



Building Science Corporation  
2008

Joseph Labaree 29



Building Science Corporation  
2008

Joseph Labaree 30



Building Science Corporation  
2008

Joseph Labburek 31



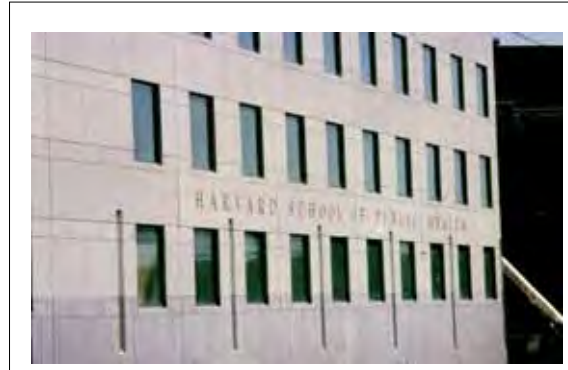
Building Science Corporation  
2008

Joseph Labburek 32



Building Science Corporation  
2008

Joseph Labburek 33



Building Science Corporation  
2008

Joseph Labburek 34



Building Science Corporation  
2008

Joseph Labburek 35



Building Science Corporation  
2008

Joseph Labburek 36





Building Science Corporation  
2008

Joseph Labaree 43



Building Science Corporation  
2008

Joseph Labaree 44



Building Science Corporation  
2008

Joseph Labaree 45



Building Science Corporation  
2008

Joseph Labaree 46



Building Science Corporation  
2008

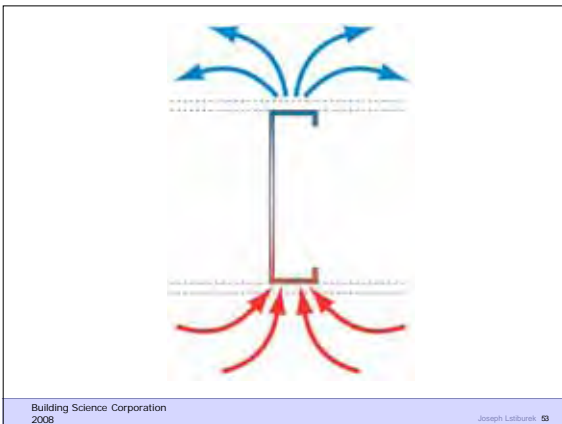
Joseph Labaree 47



Building Science Corporation  
2008

Joseph Labaree 48

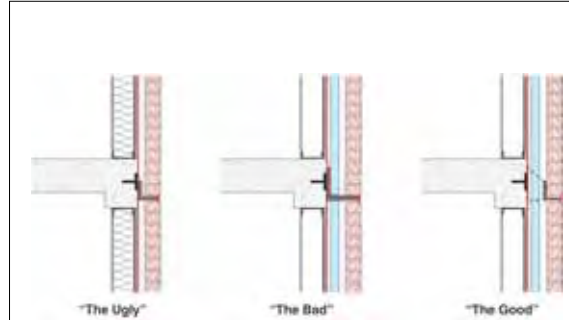






Building Science Corporation  
2008

Joseph Labaree 55



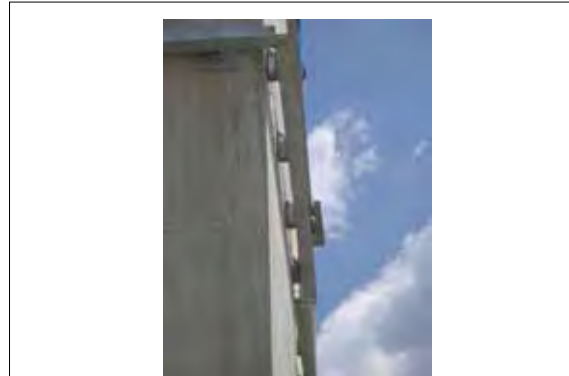
Building Science Corporation  
2008

Joseph Labaree 56



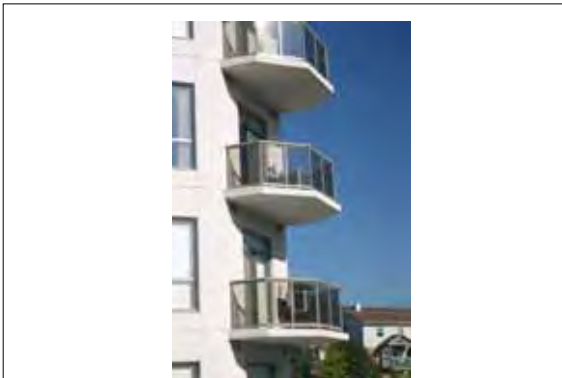
Building Science Corporation  
2008

Joseph Labaree 57



Building Science Corporation  
2008

Joseph Labaree 58



Building Science Corporation  
2008

Joseph Labaree 59



Building Science Corporation  
2008

Joseph Labaree 60



Building Science Corporation  
2008

Joseph Labburek 61



Building Science Corporation  
2008

Joseph Labburek 62



Building Science Corporation  
2008

Joseph Labburek 63



Building Science Corporation  
2008

Joseph Labburek 64



Building Science Corporation  
2008

Joseph Labburek 65



Building Science Corporation  
2008

Joseph Labburek 66



Building Science Corporation  
2008

Joseph Labibek 67

Increased Thermal Resistance  
Permeability of Enclosure Linings  
Water And Mold Sensitivity of Materials  
Hygic Buffer Capacity And Redistribution  
Three Dimensional Air Flow Networks

Building Science Corporation  
2008

Joseph Labibek 68



Building Science Corporation  
2008

Joseph Labibek 69



Building Science Corporation  
2008

Joseph Labibek 70



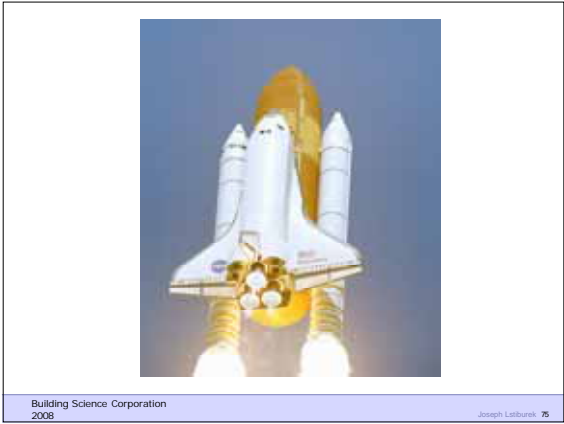
Building Science Corporation  
2008

Joseph Labibek 71



Building Science Corporation  
2008

Joseph Labibek 72



Aluminium Pressure Vessel Filled With A  
Cryogenic Liquid On a Beach In Florida In  
July

Building Science Corporation  
2008

Joseph Labburek 76





Building Science Corporation  
2008

Joseph Labaree 79



Building Science Corporation  
2008

Joseph Labaree 80