

Joseph Lstiburek, Ph.D., P.Eng, ASHRAE Fellow

Building Science

Hurricanes and Floods

Dry...Don't Die

Dry...Don't Die
Wash, Rinse and Dry



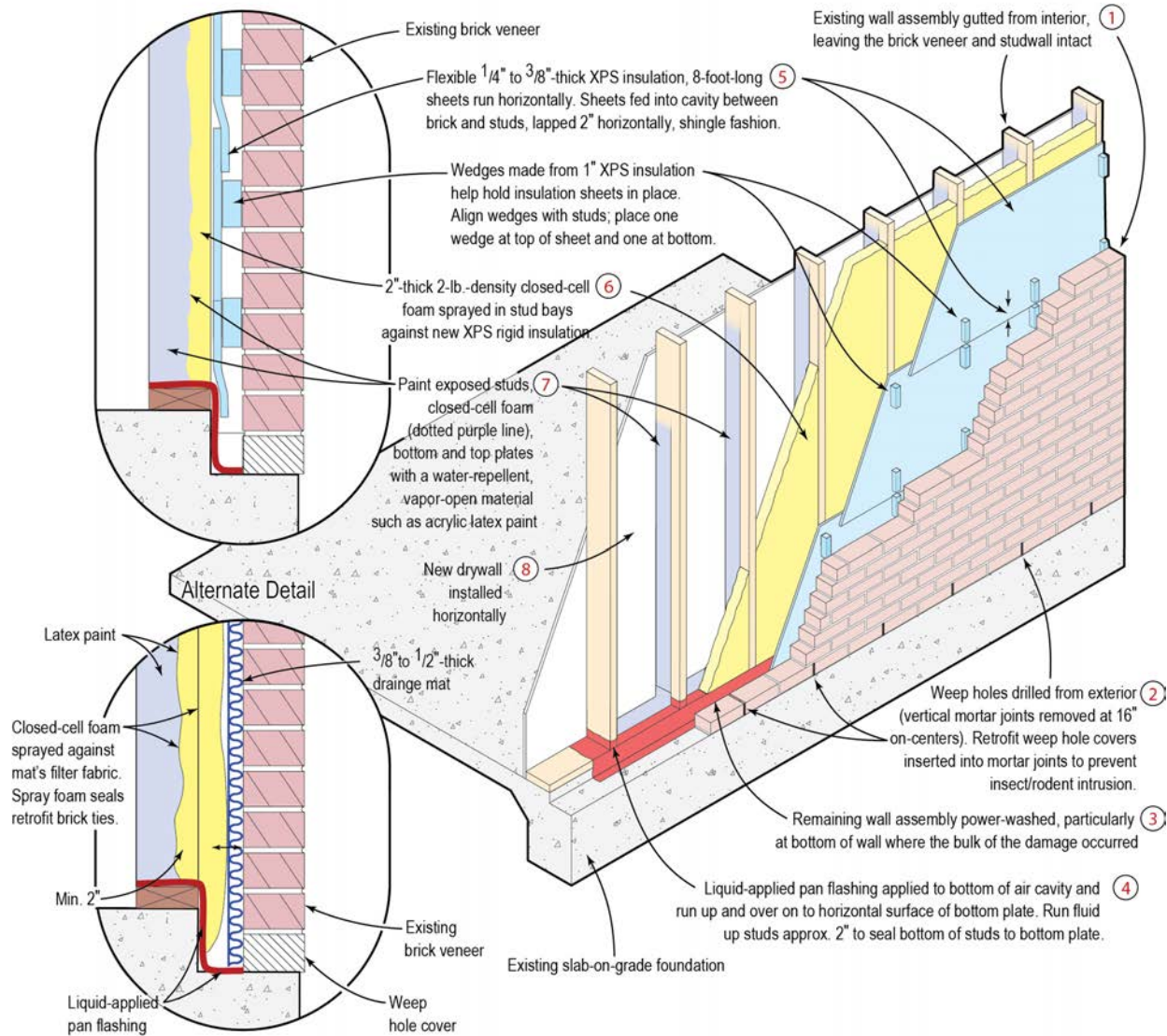


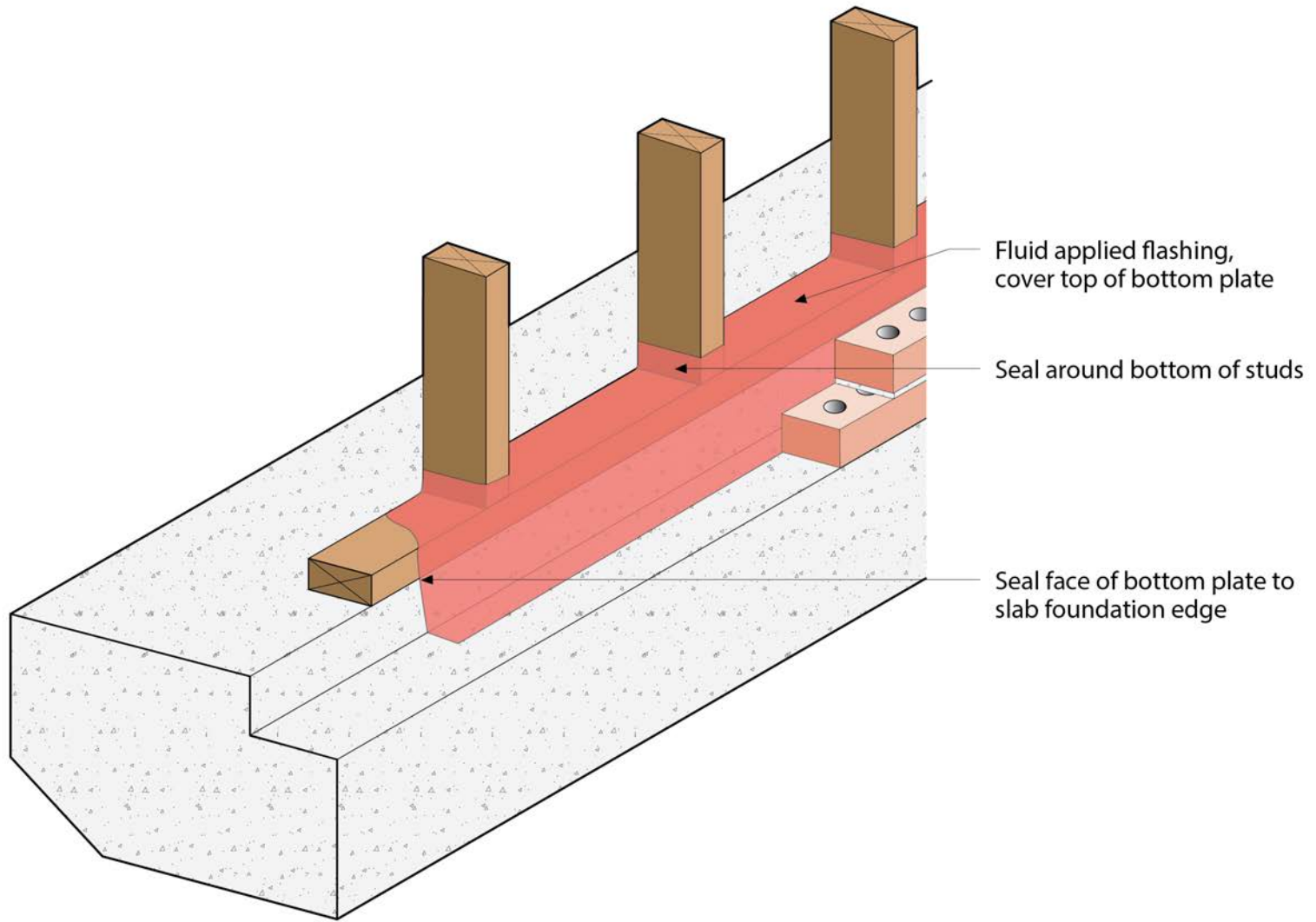


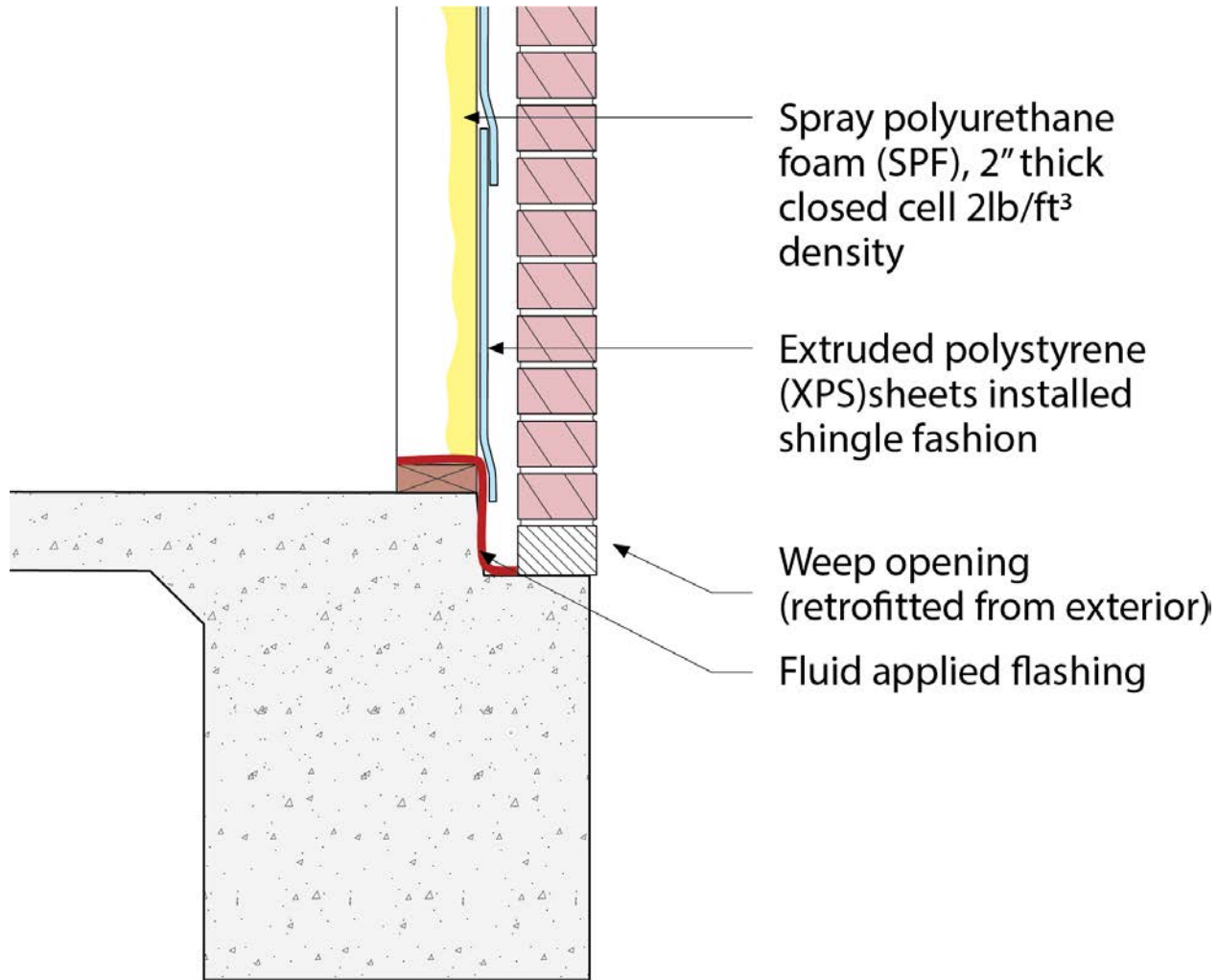




Flood-Tolerant Wall Reconstruction

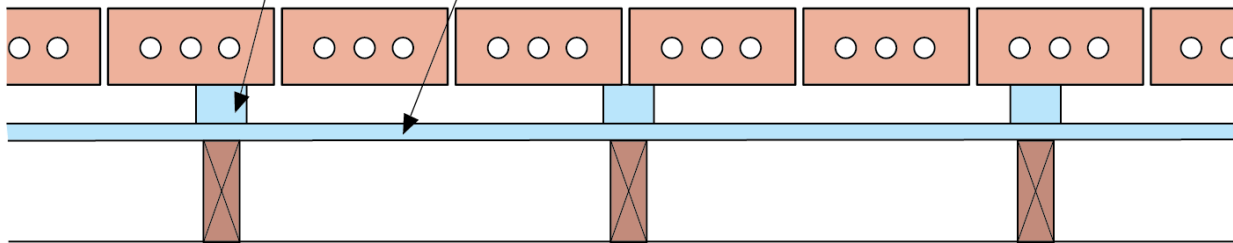


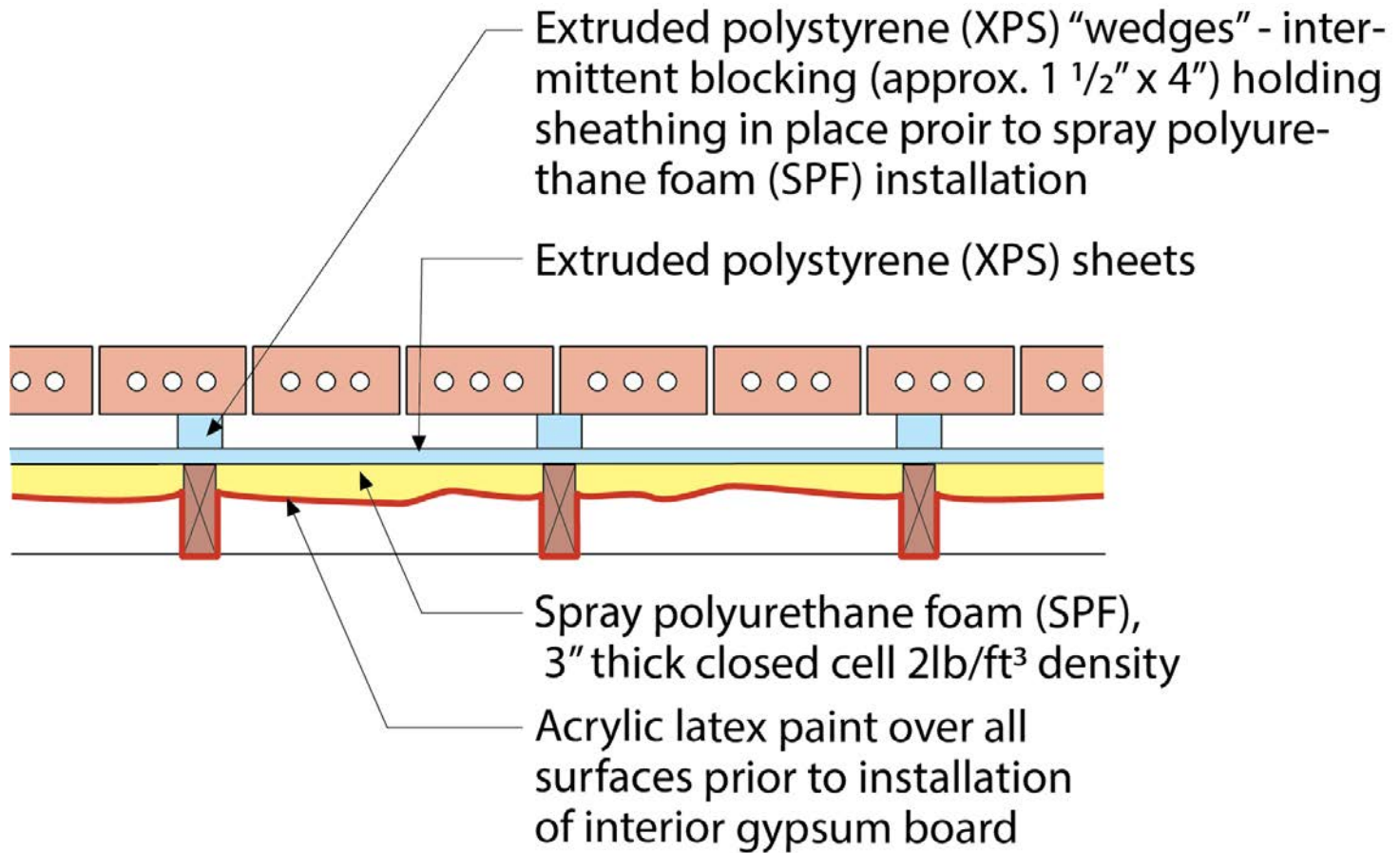


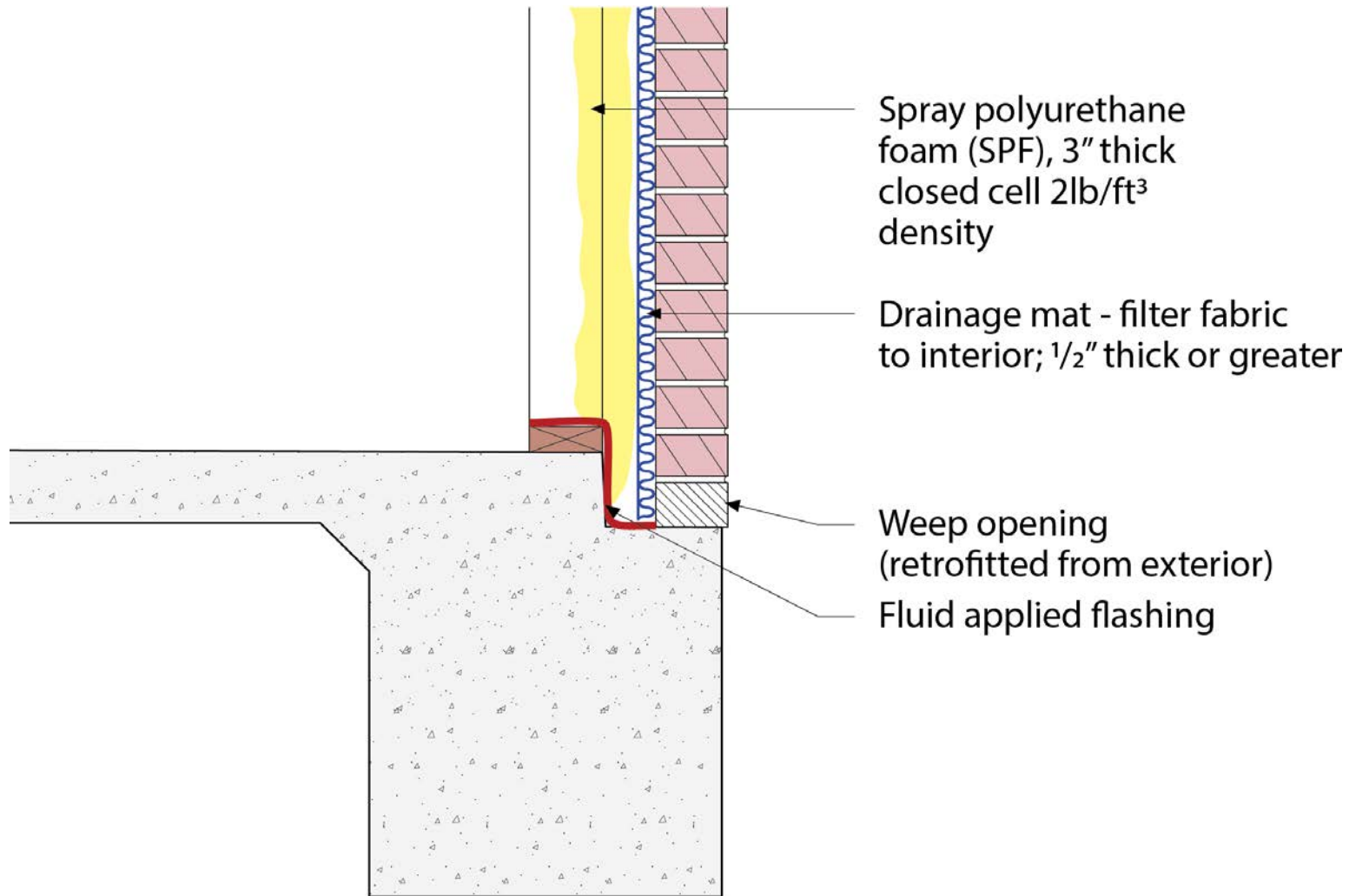


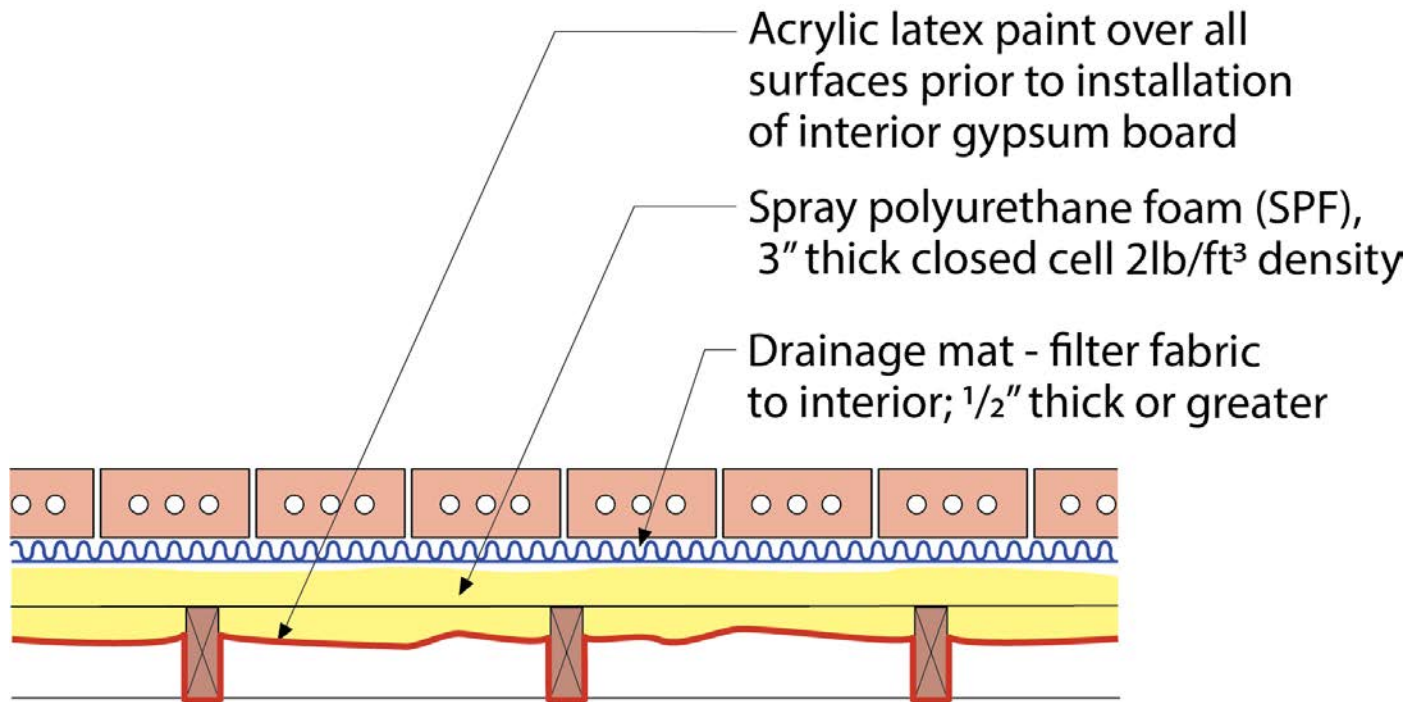
Extruded polystyrene (XPS) "wedges" - intermittent blocking (approx. 1 1/2" x 4") holding sheathing in place prior to spray polyurethane foam (SPF) installation

Extruded polystyrene (XPS) sheets









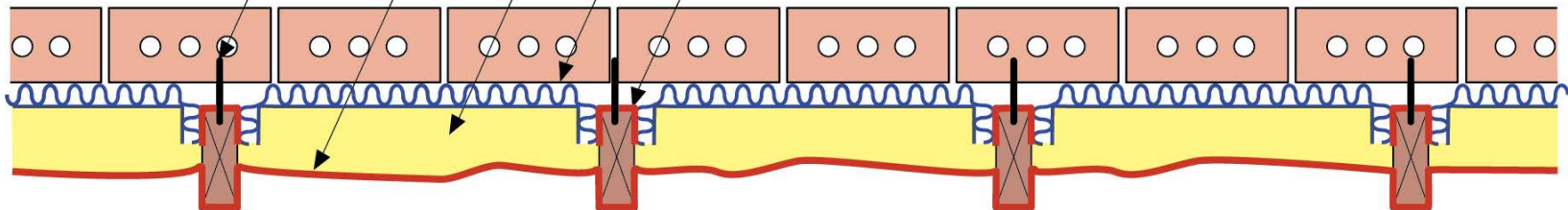
Existing brick ties

Acrylic latex paint over all surfaces prior to installation of interior gypsum board

Spray polyurethane foam (SPF), 3" thick closed cell 2lb/ft³ density

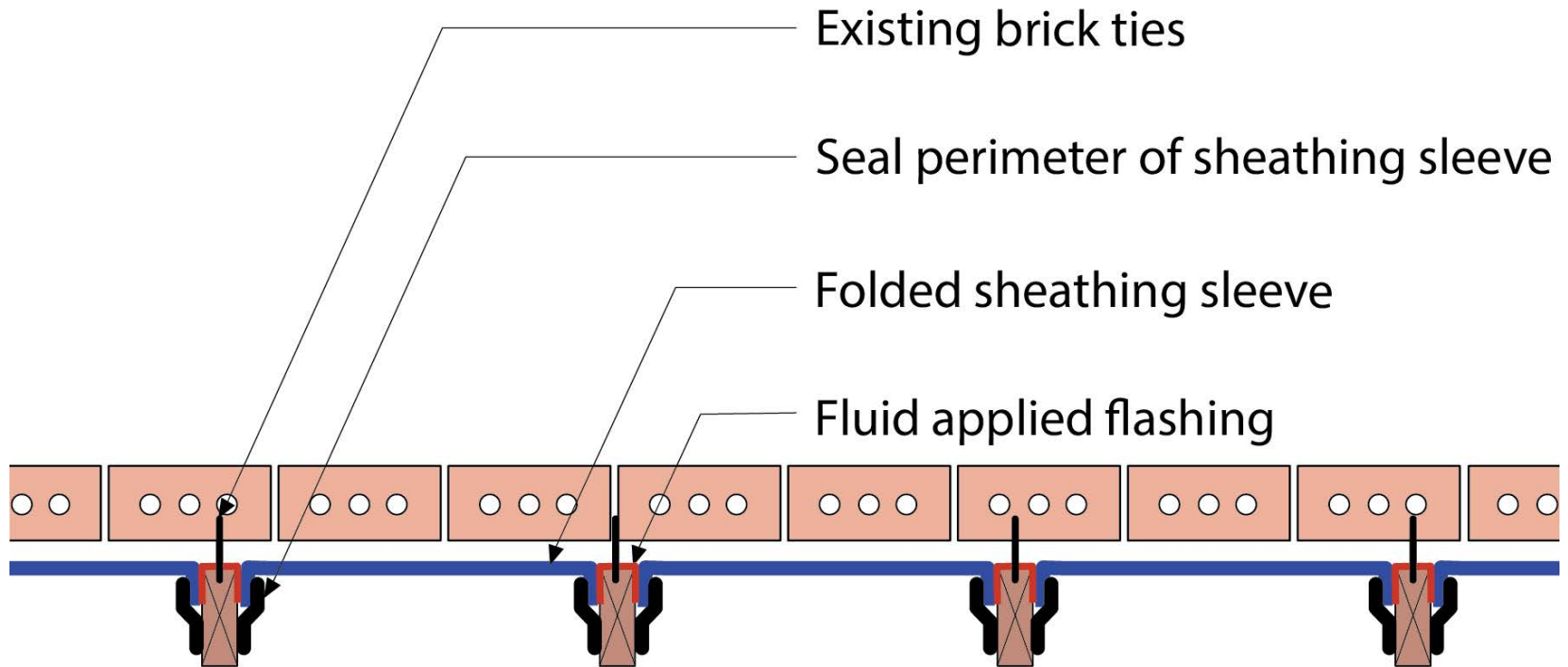
Drainage mat - filter fabric to interior; 1/2" thick or greater

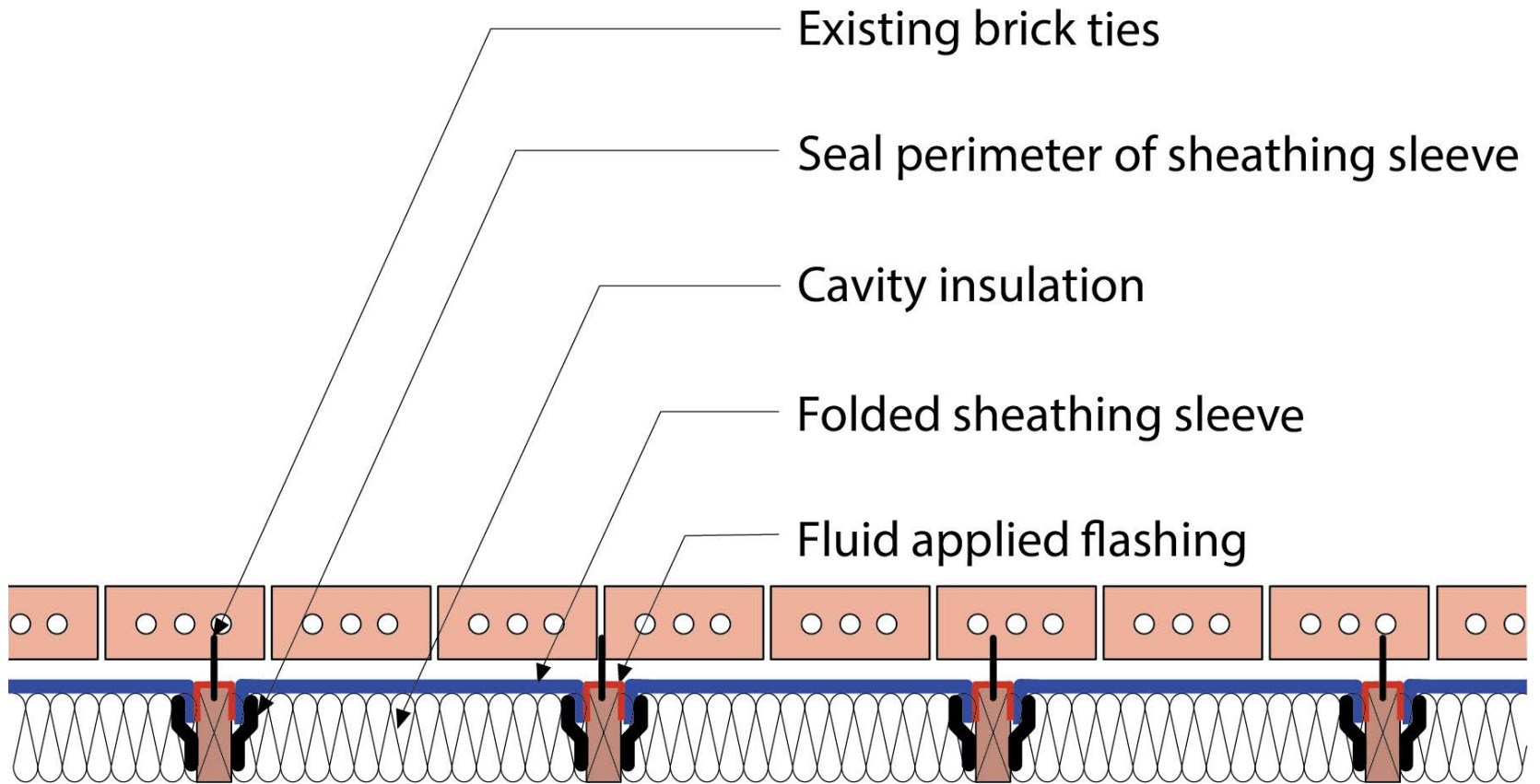
Fluid applied flashing

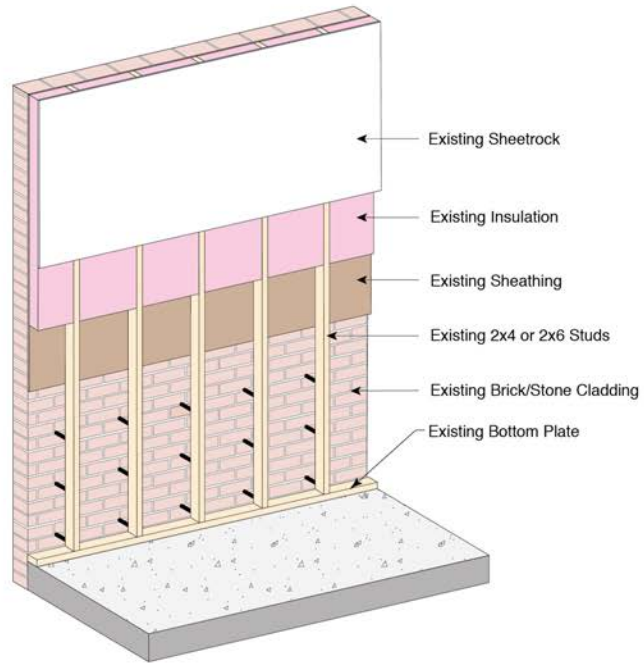


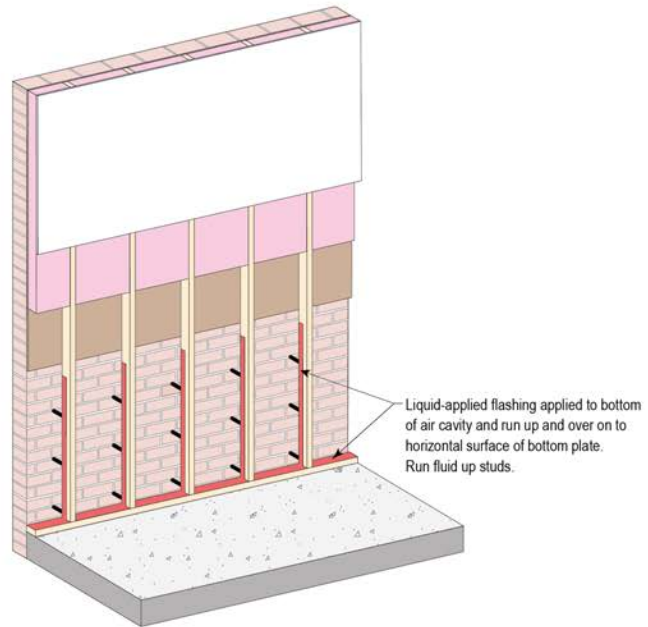


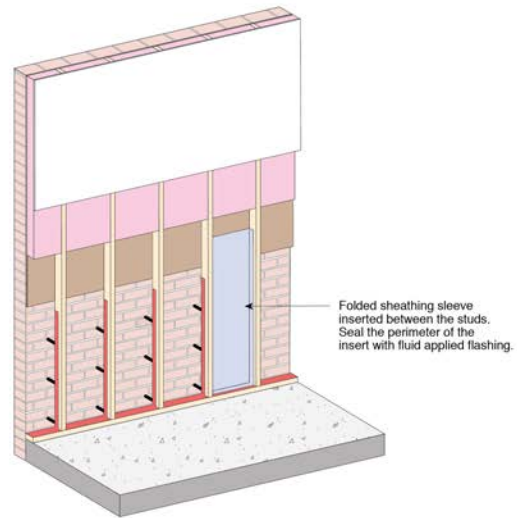


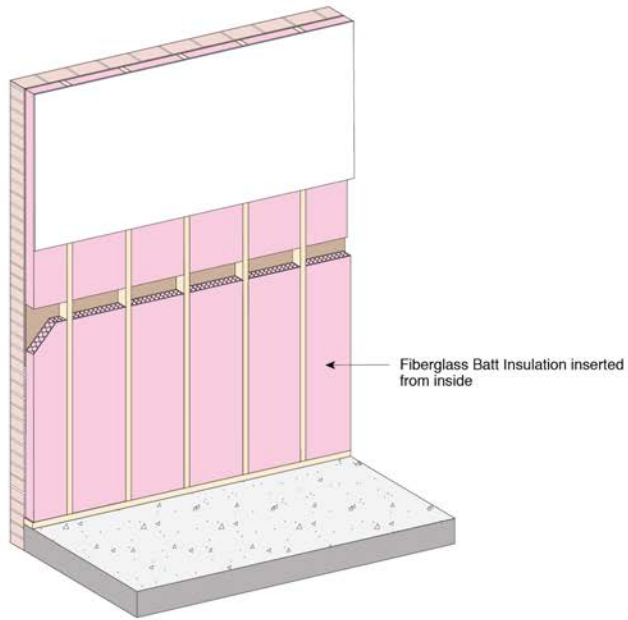


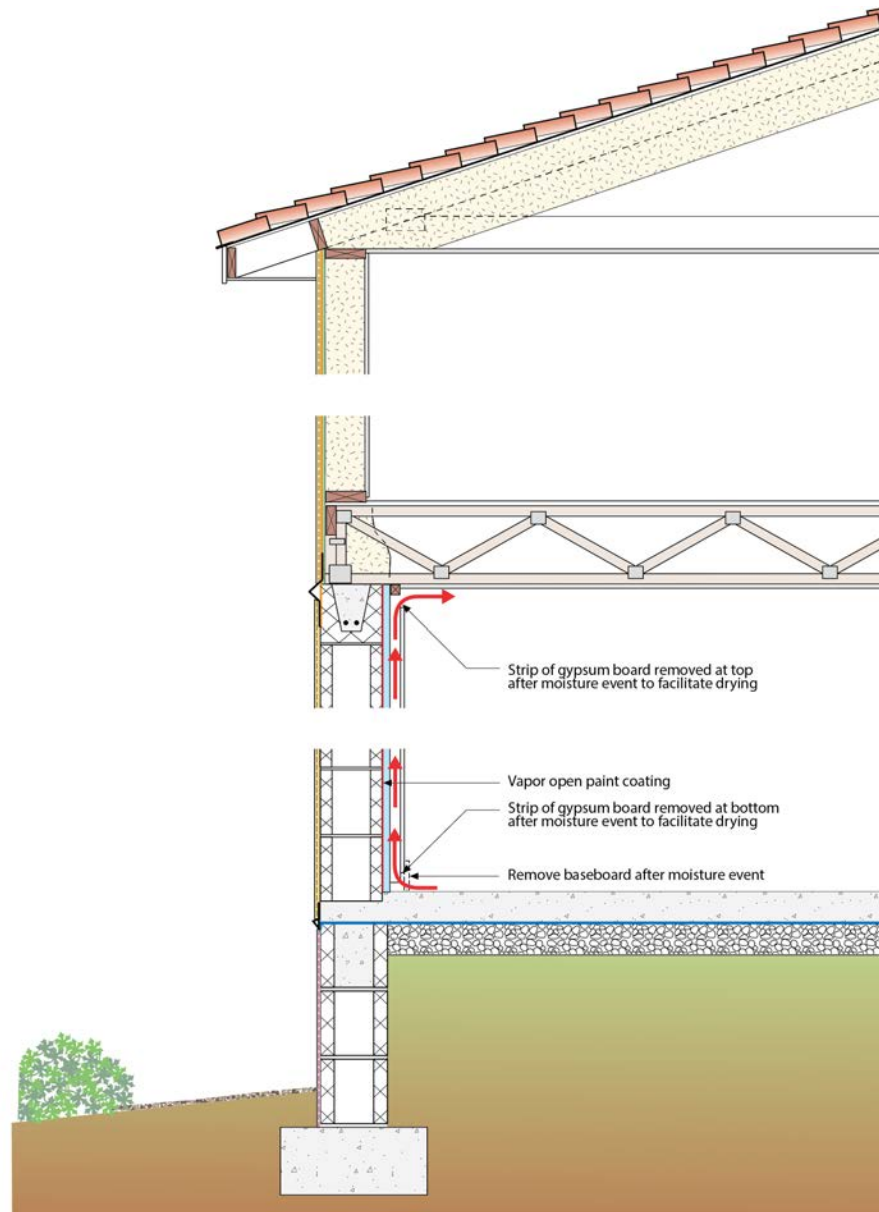


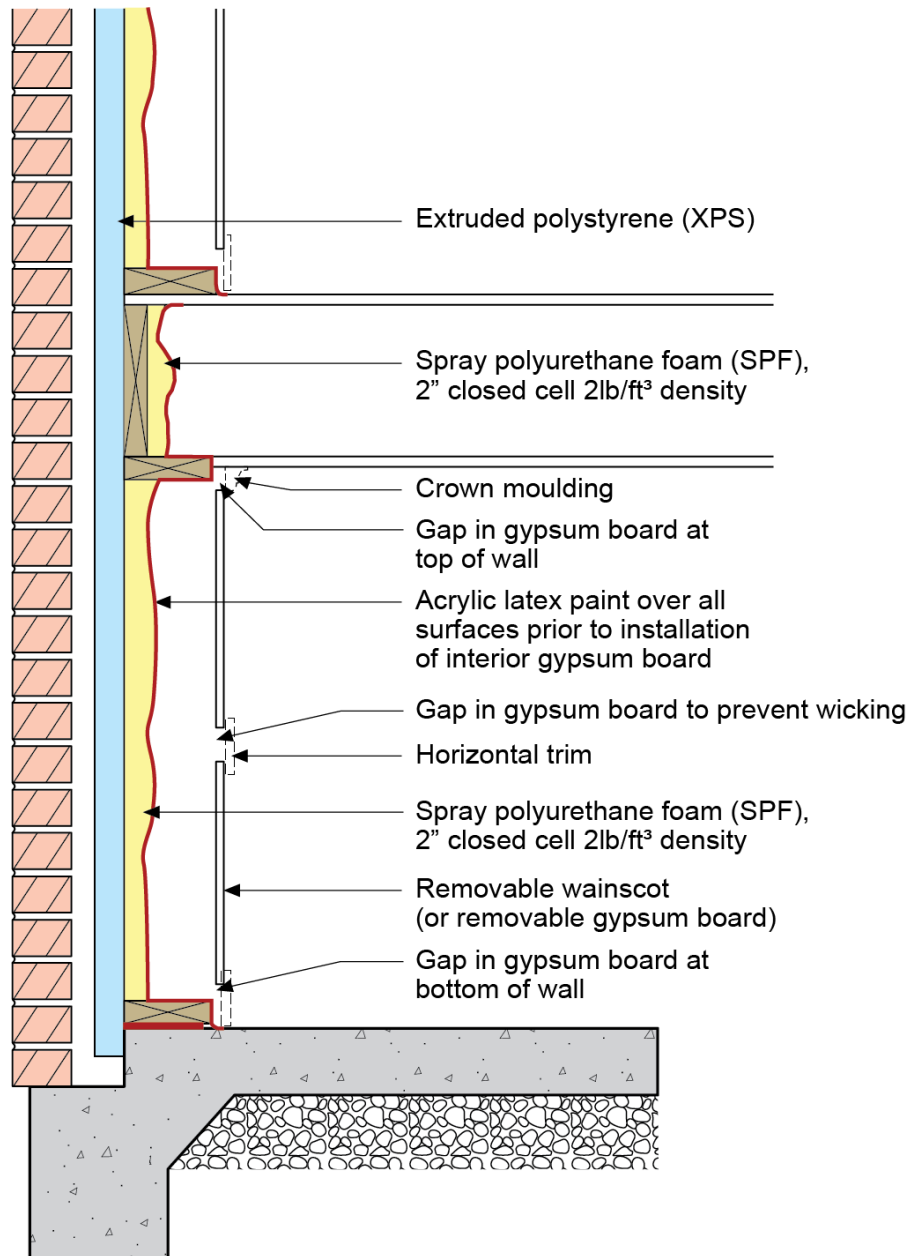


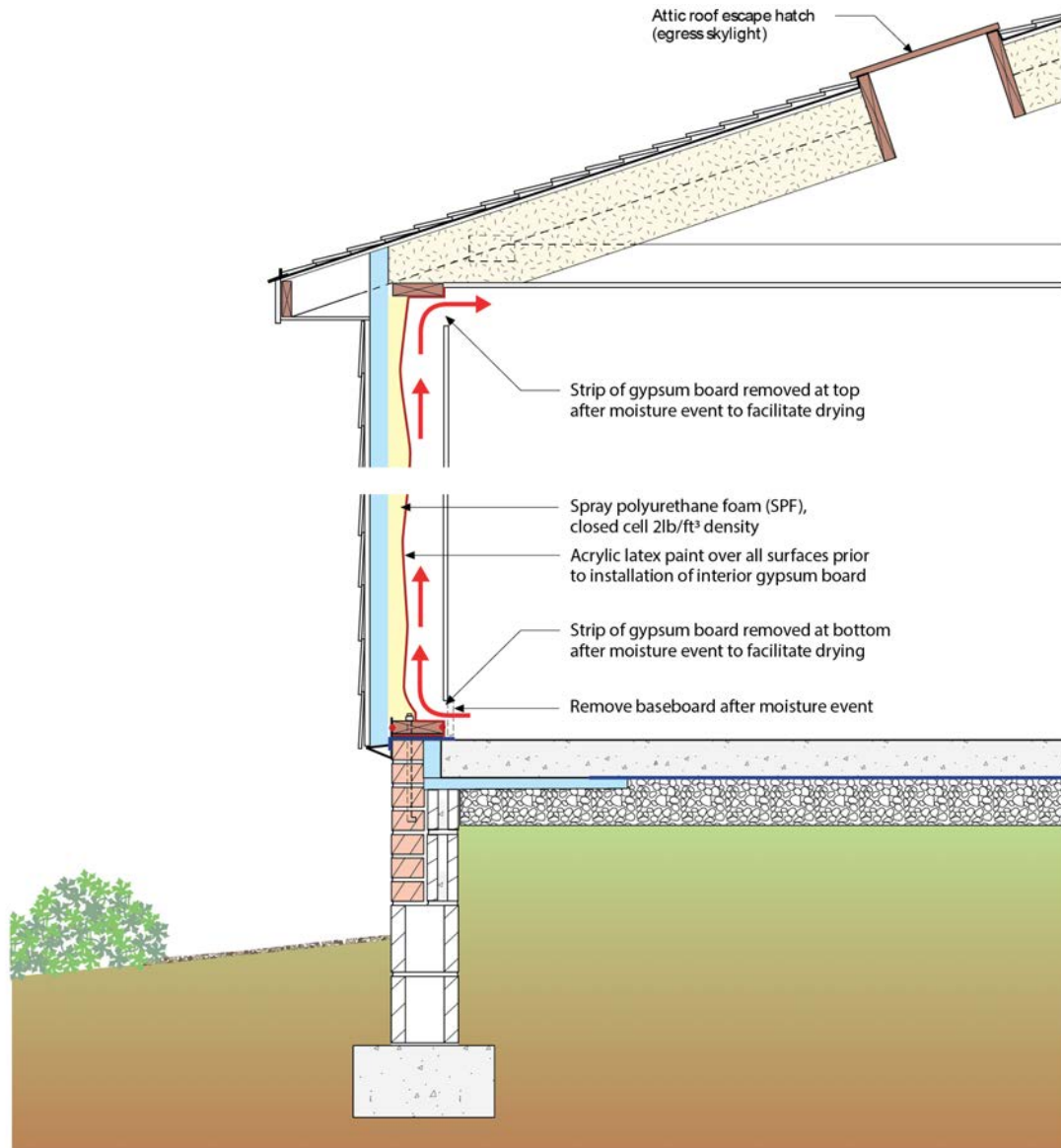


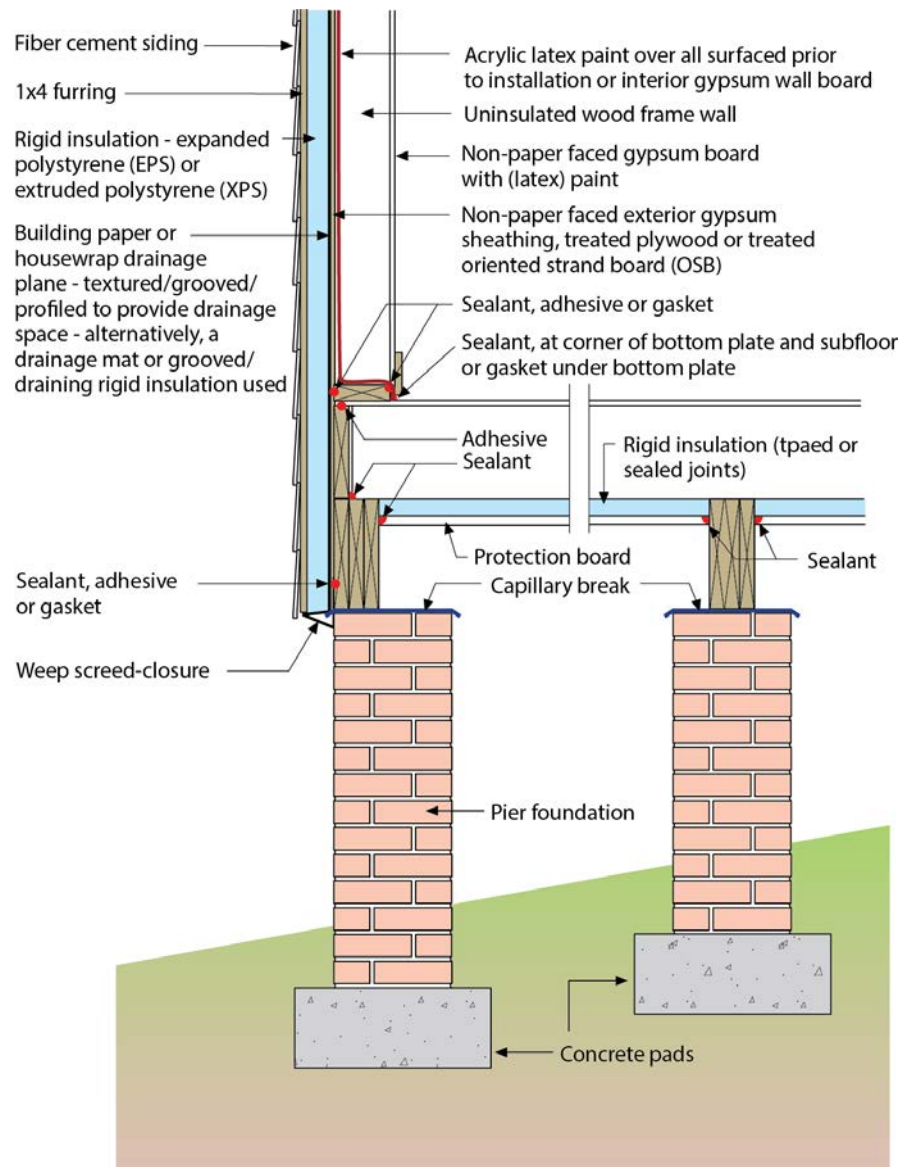


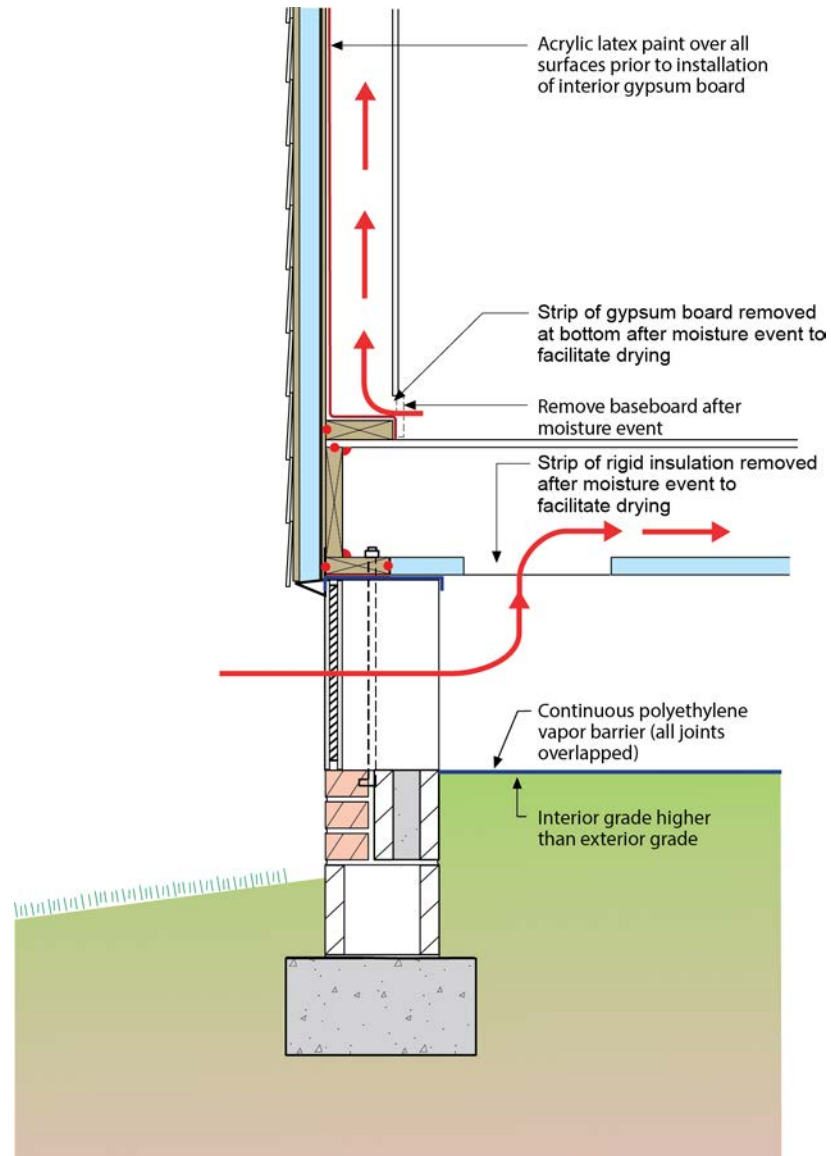


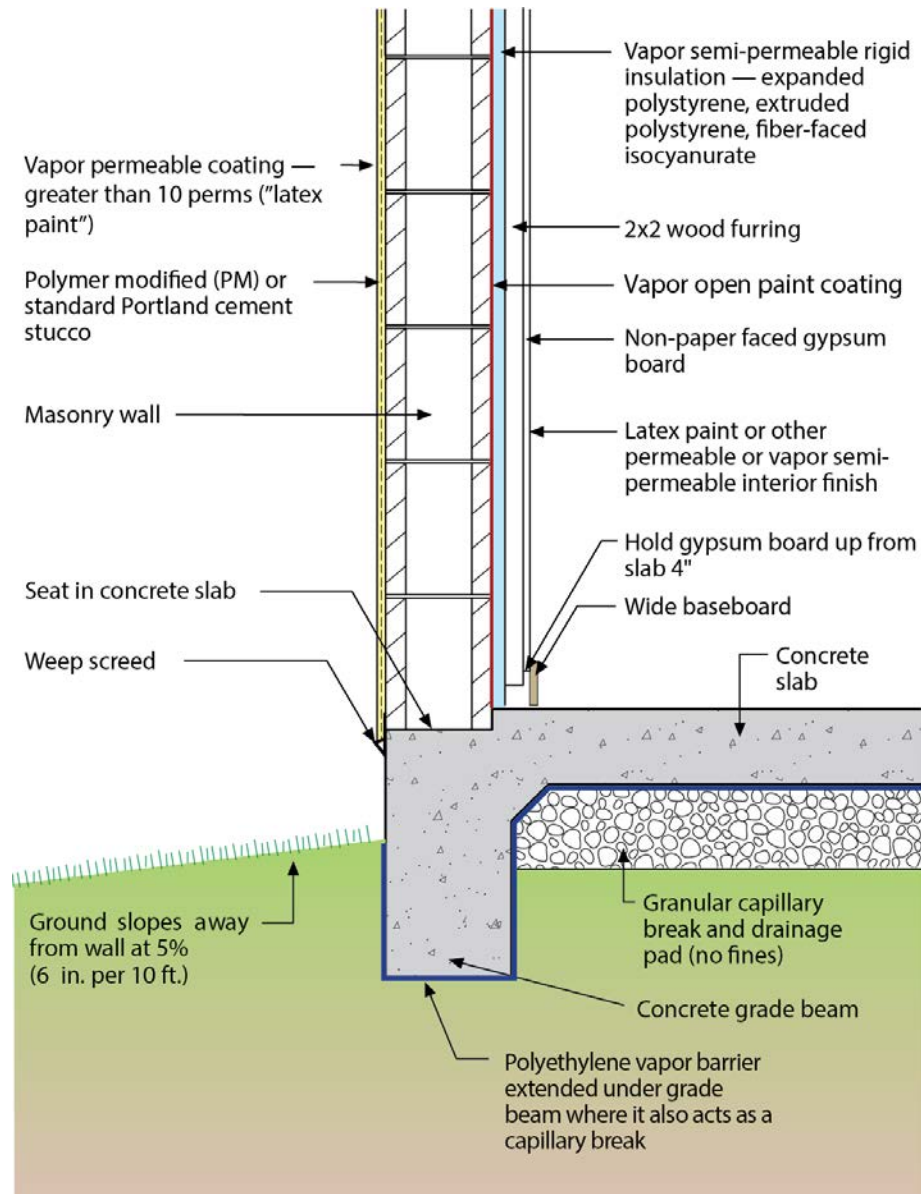




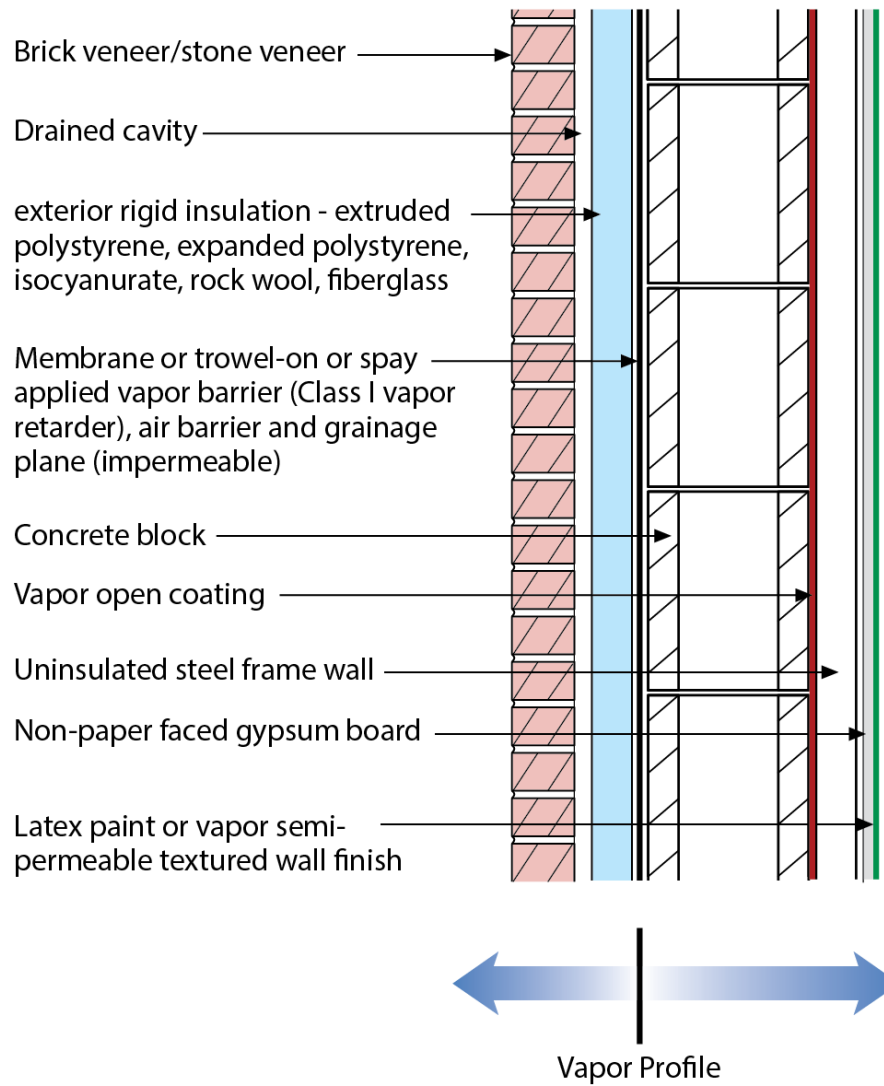


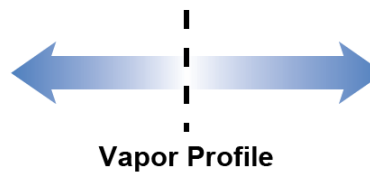
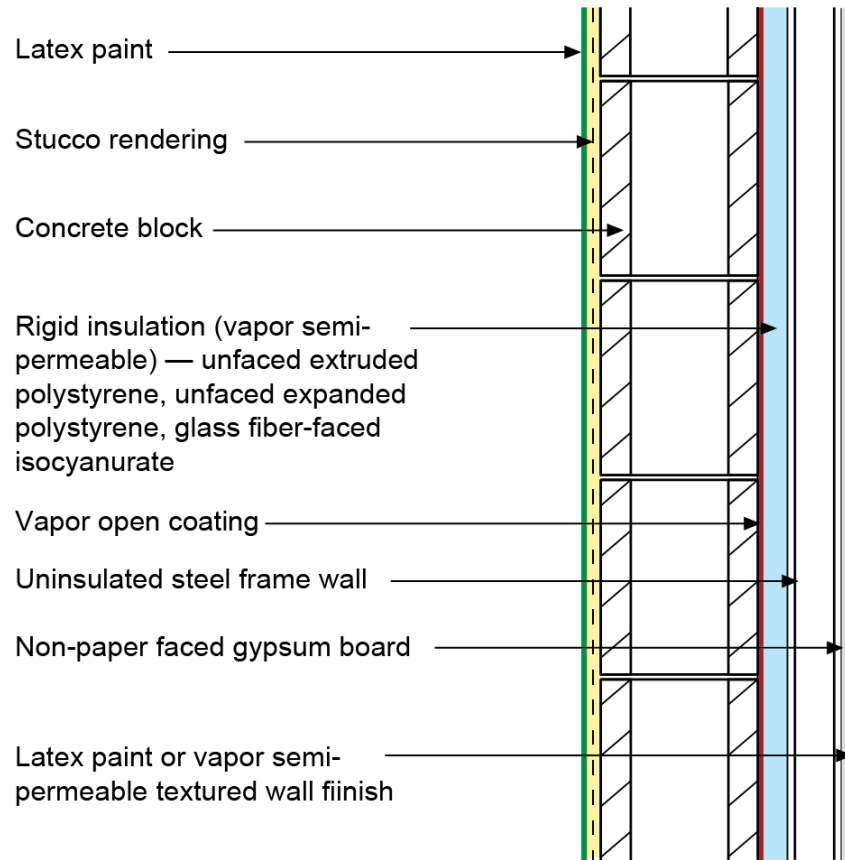


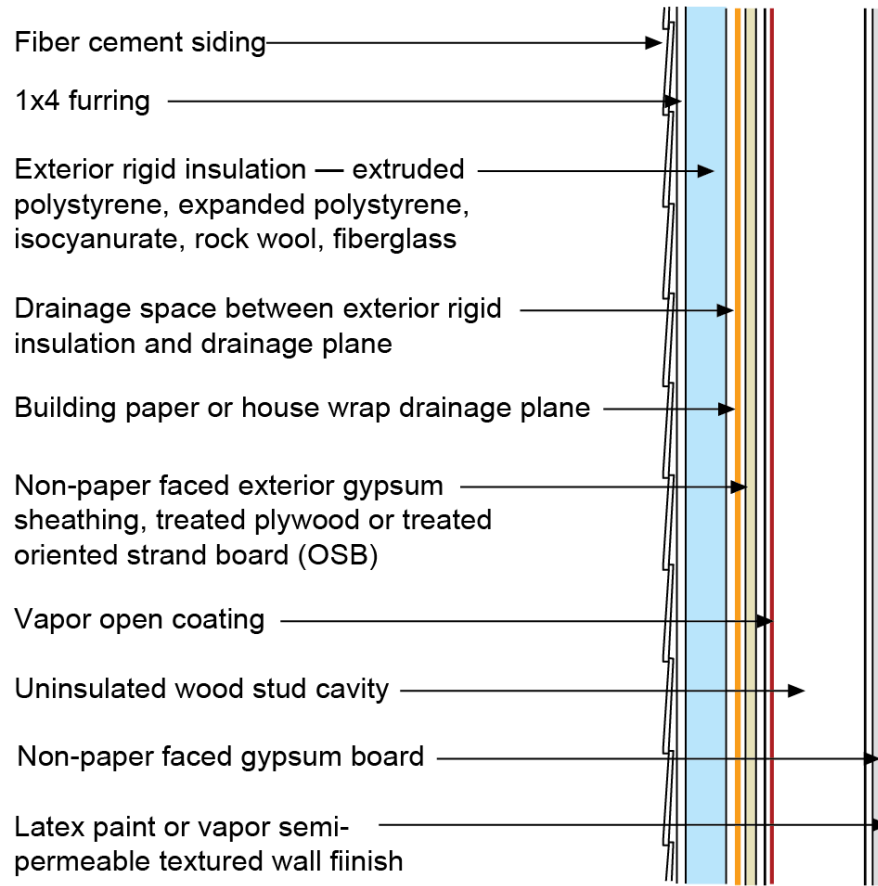




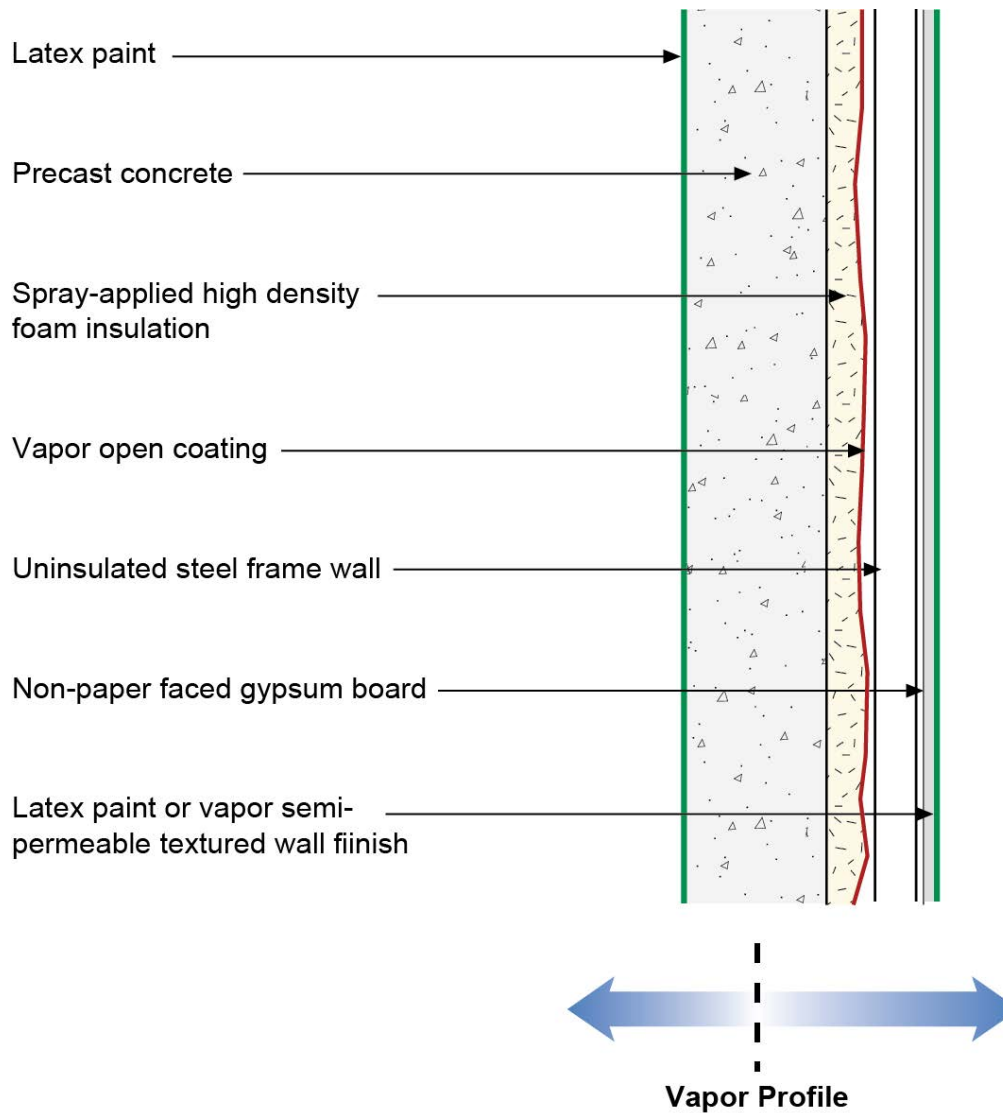


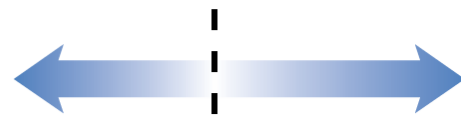
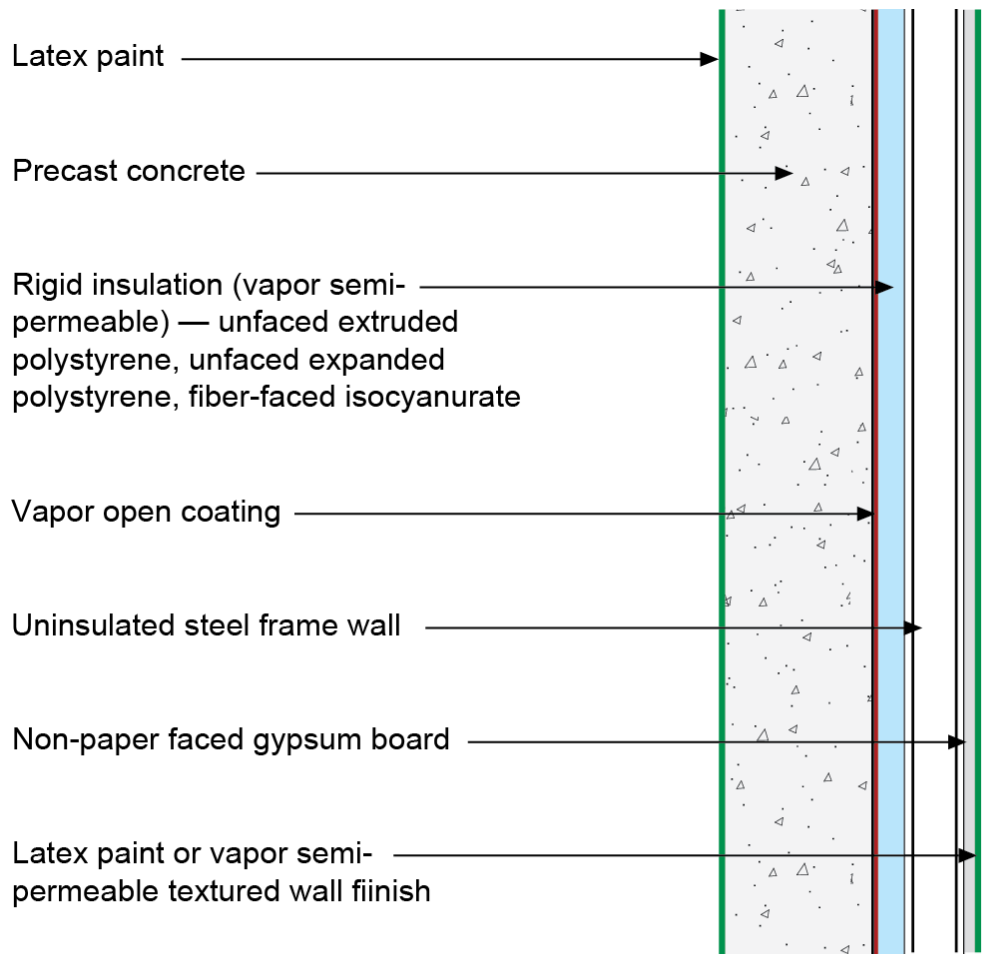




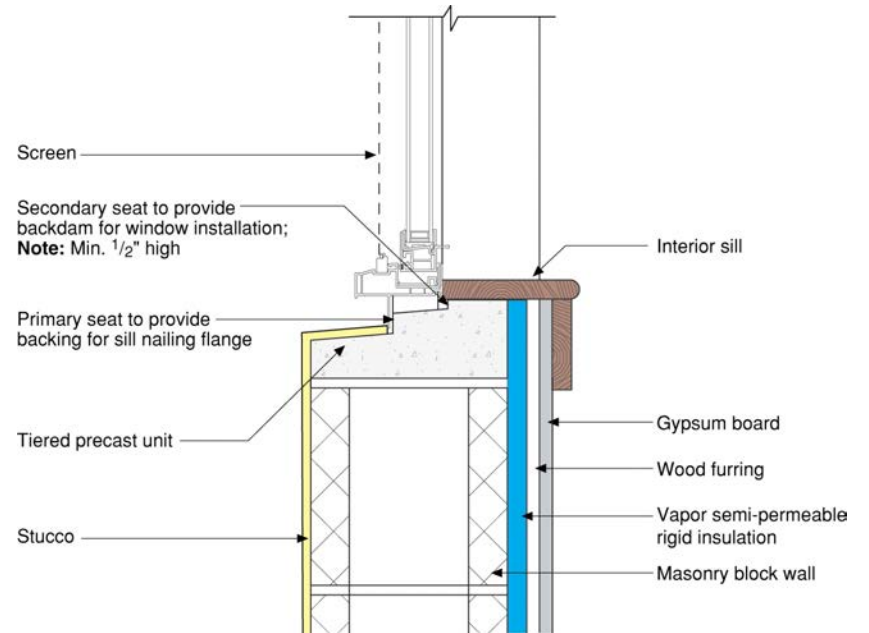
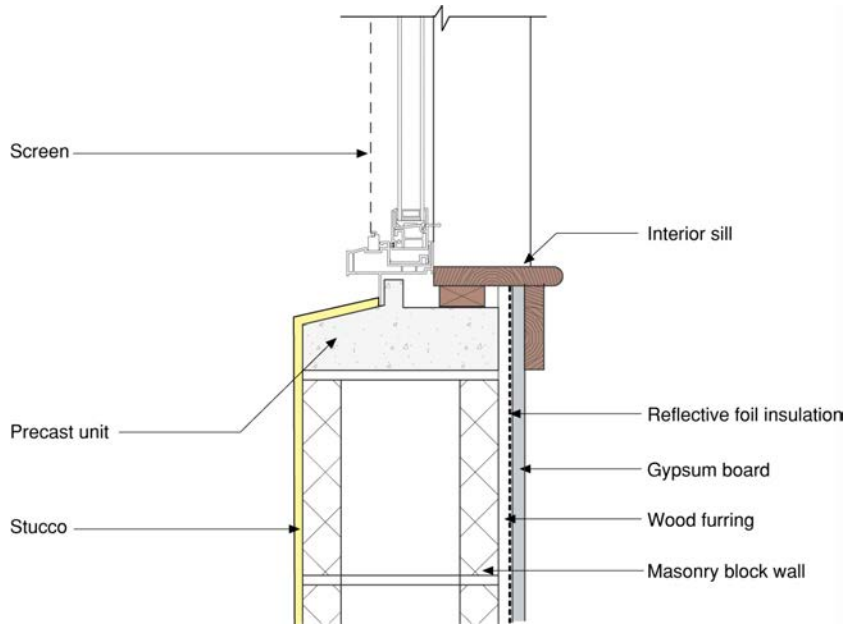


Vapor Profile





Vapor Profile



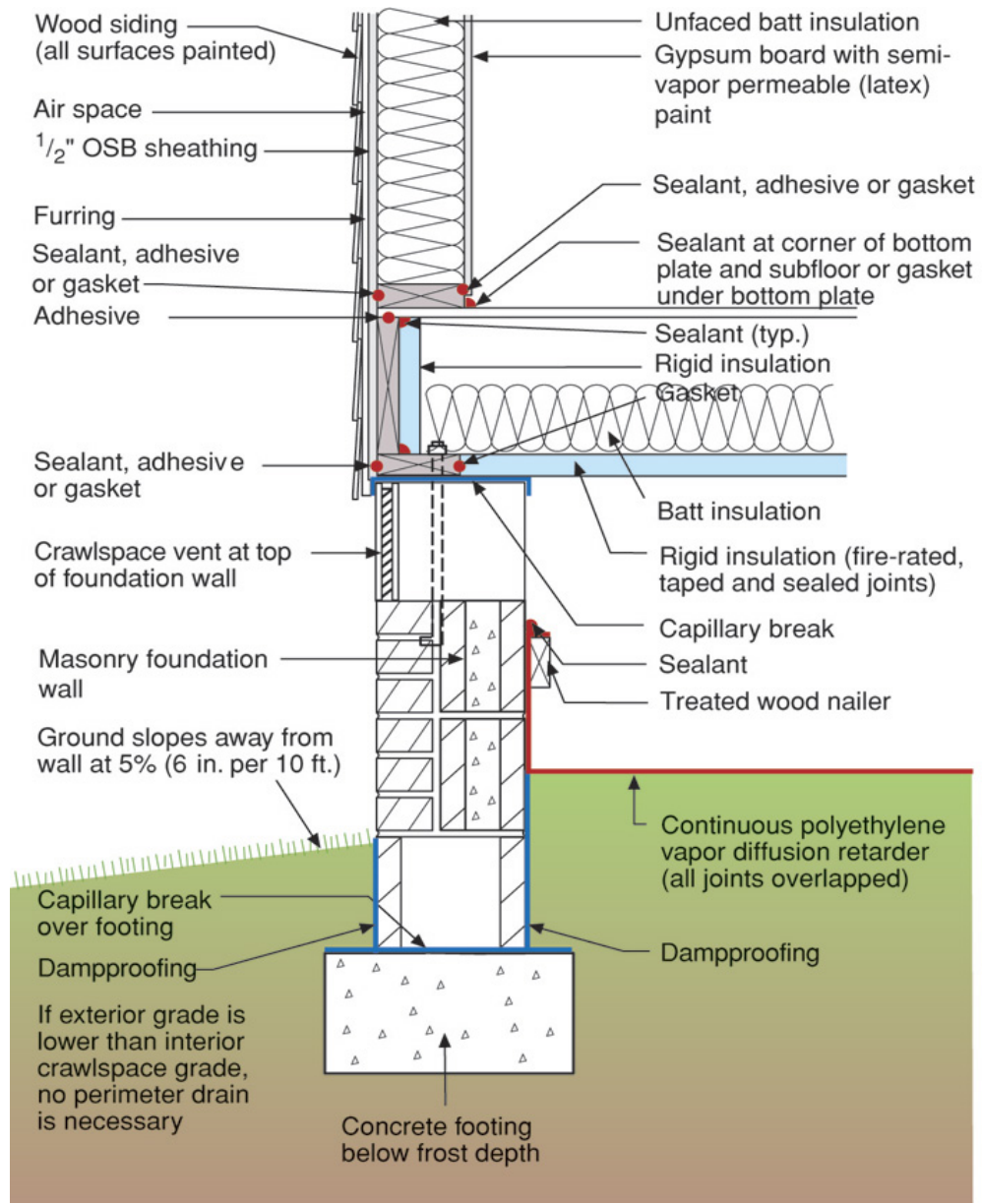


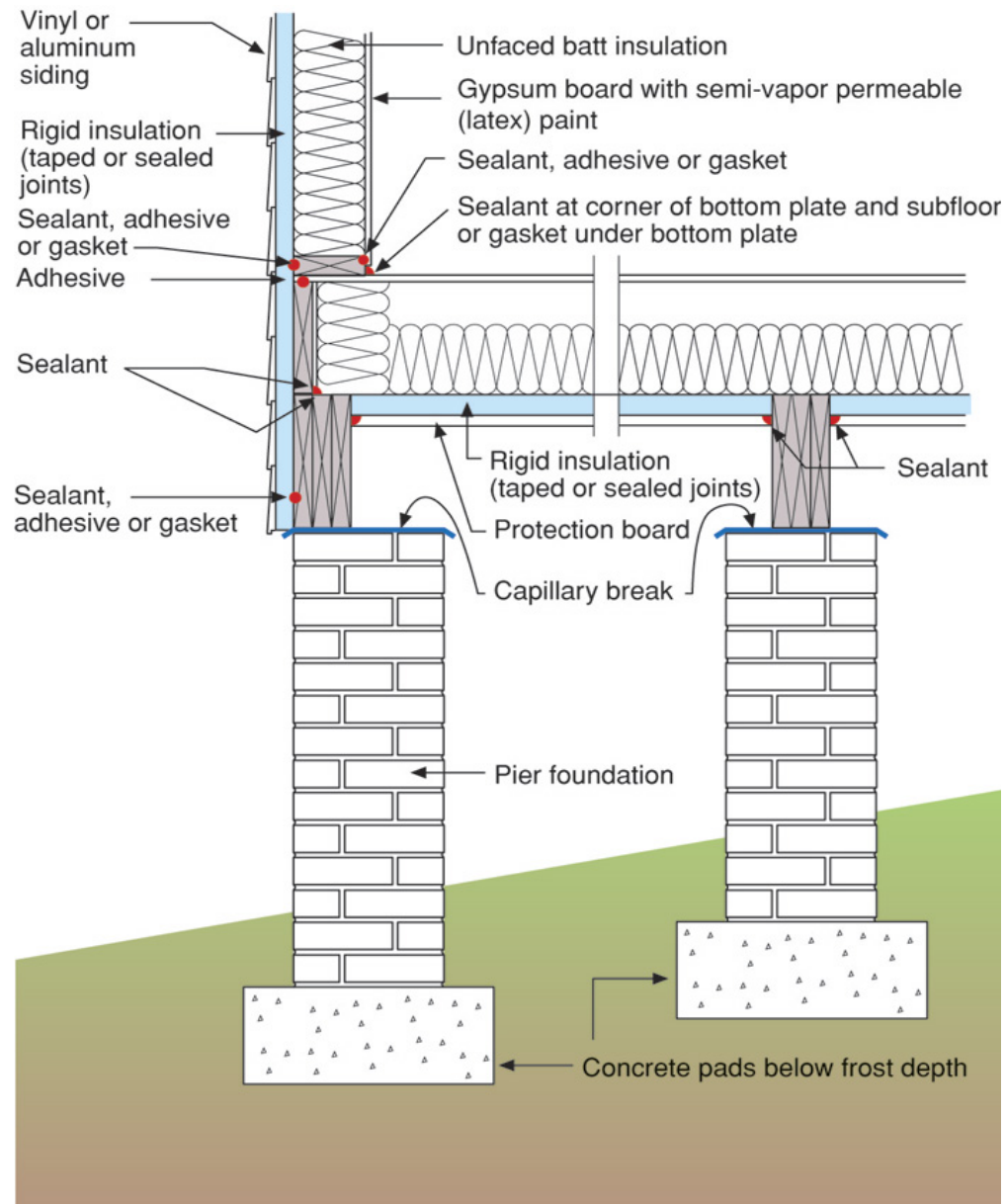








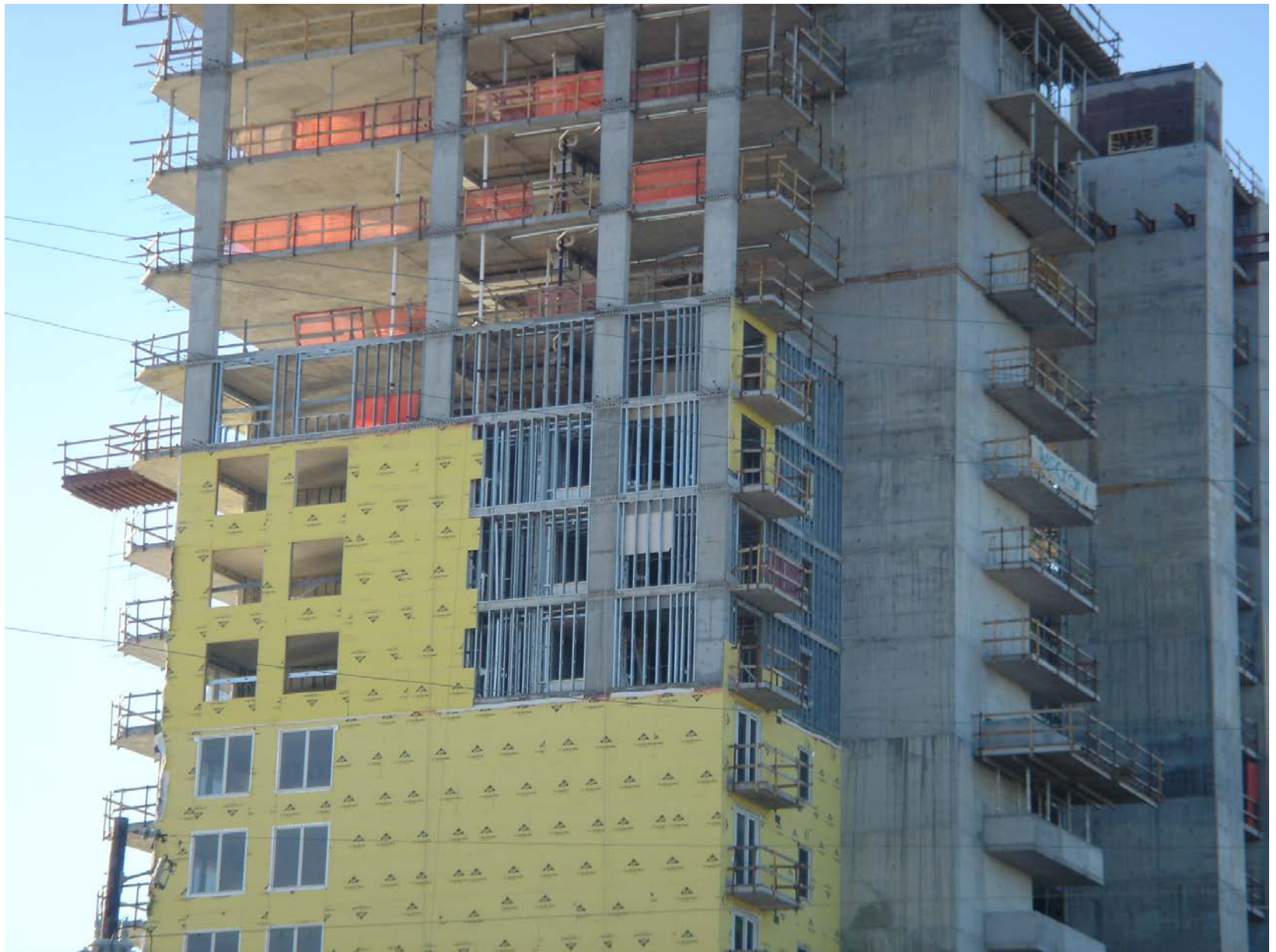


































































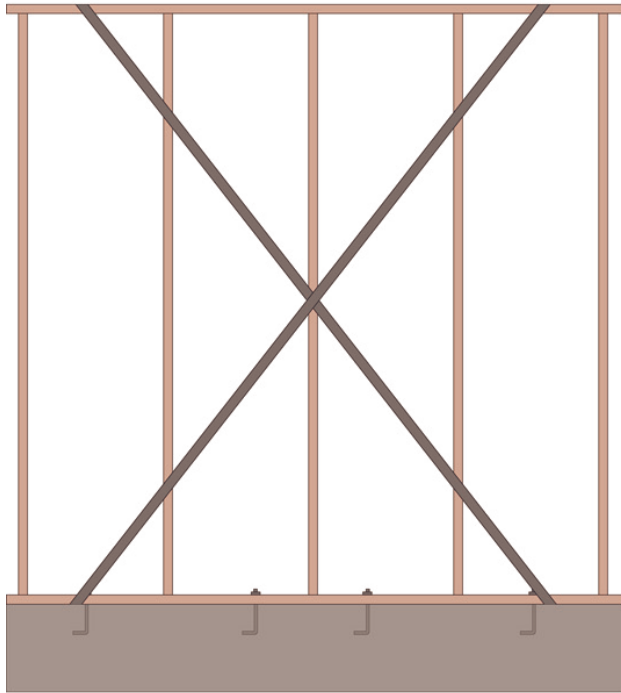




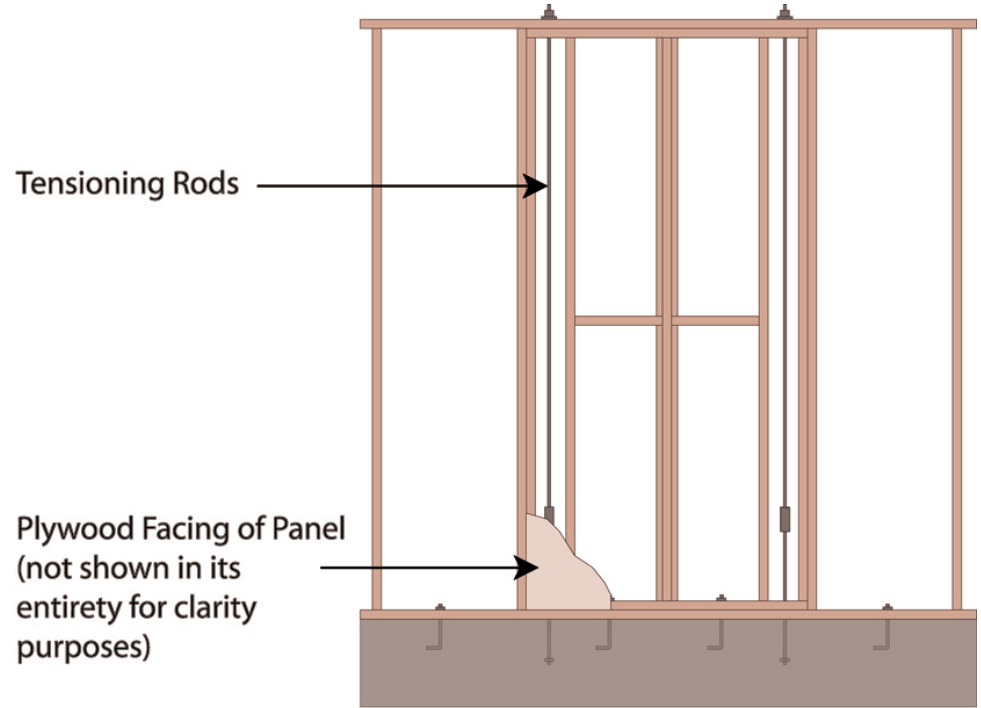








Metal Cross Bracing



Inset Shear Panel



