

Joseph Lstiburek, Ph.D., P.Eng, ASHRAE Fellow

# Building Science

---

## Hurricanes and Floods

Dry...Don't Die

Dry...Don't Die  
Wash, Rinse and Dry





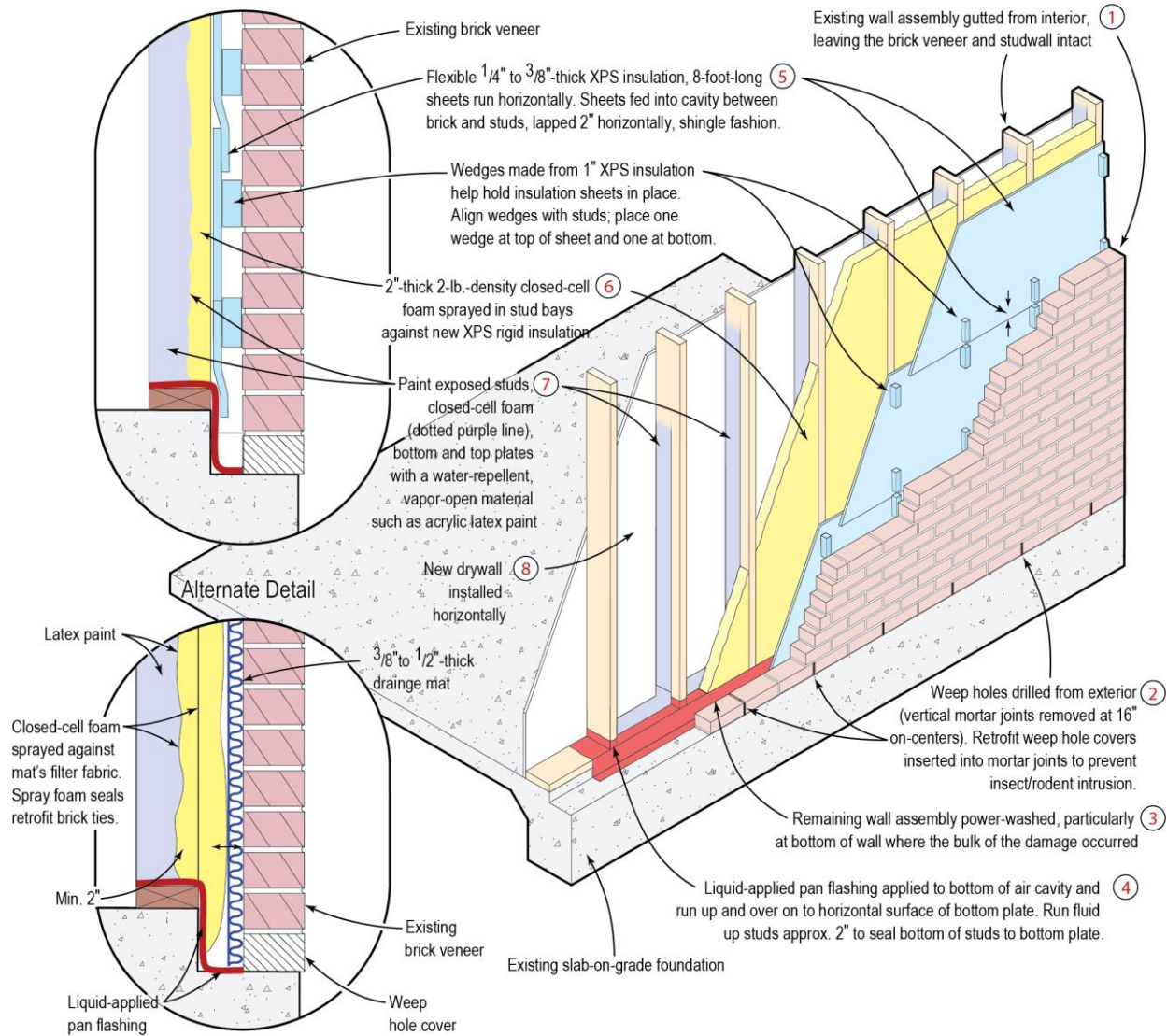


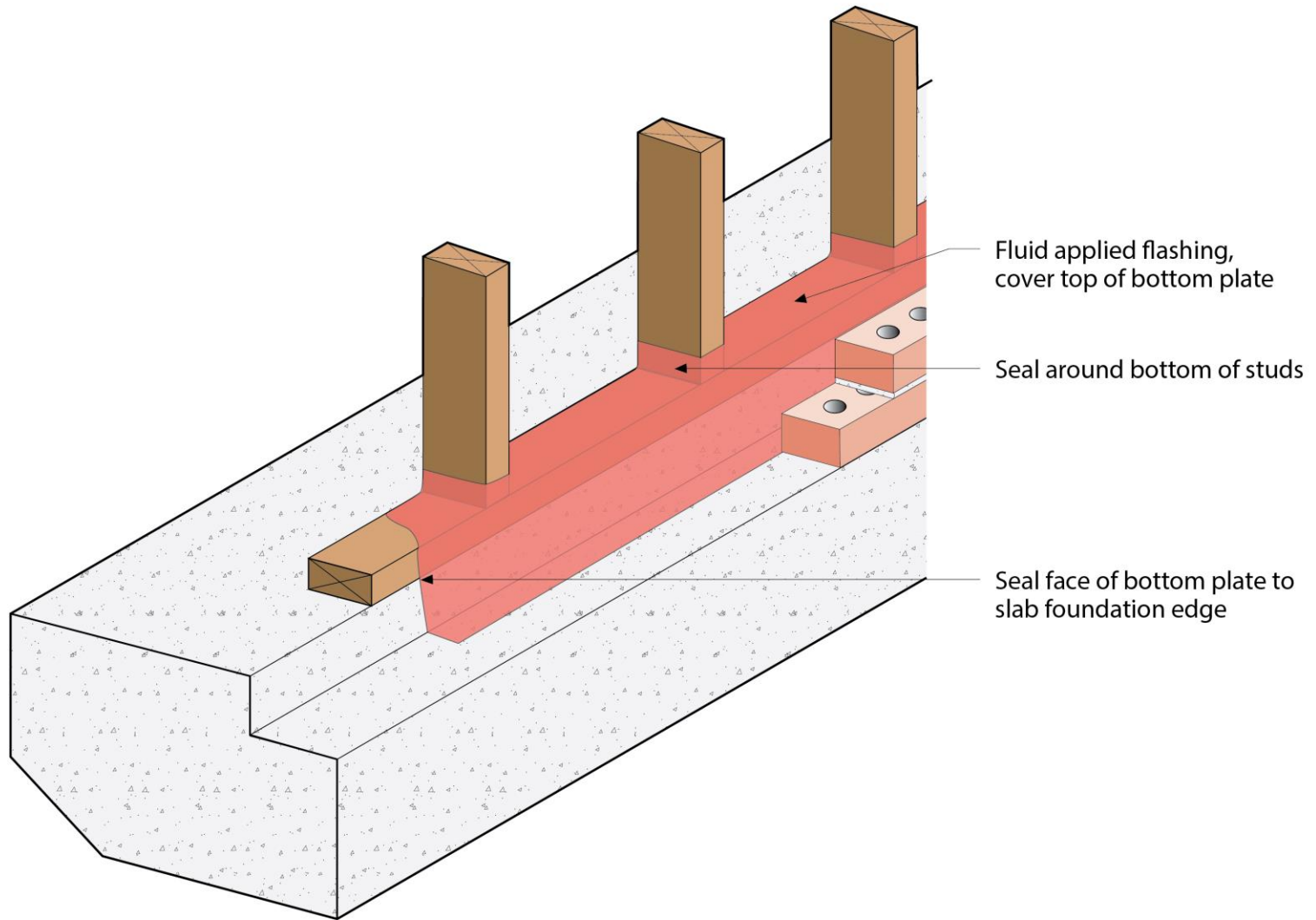


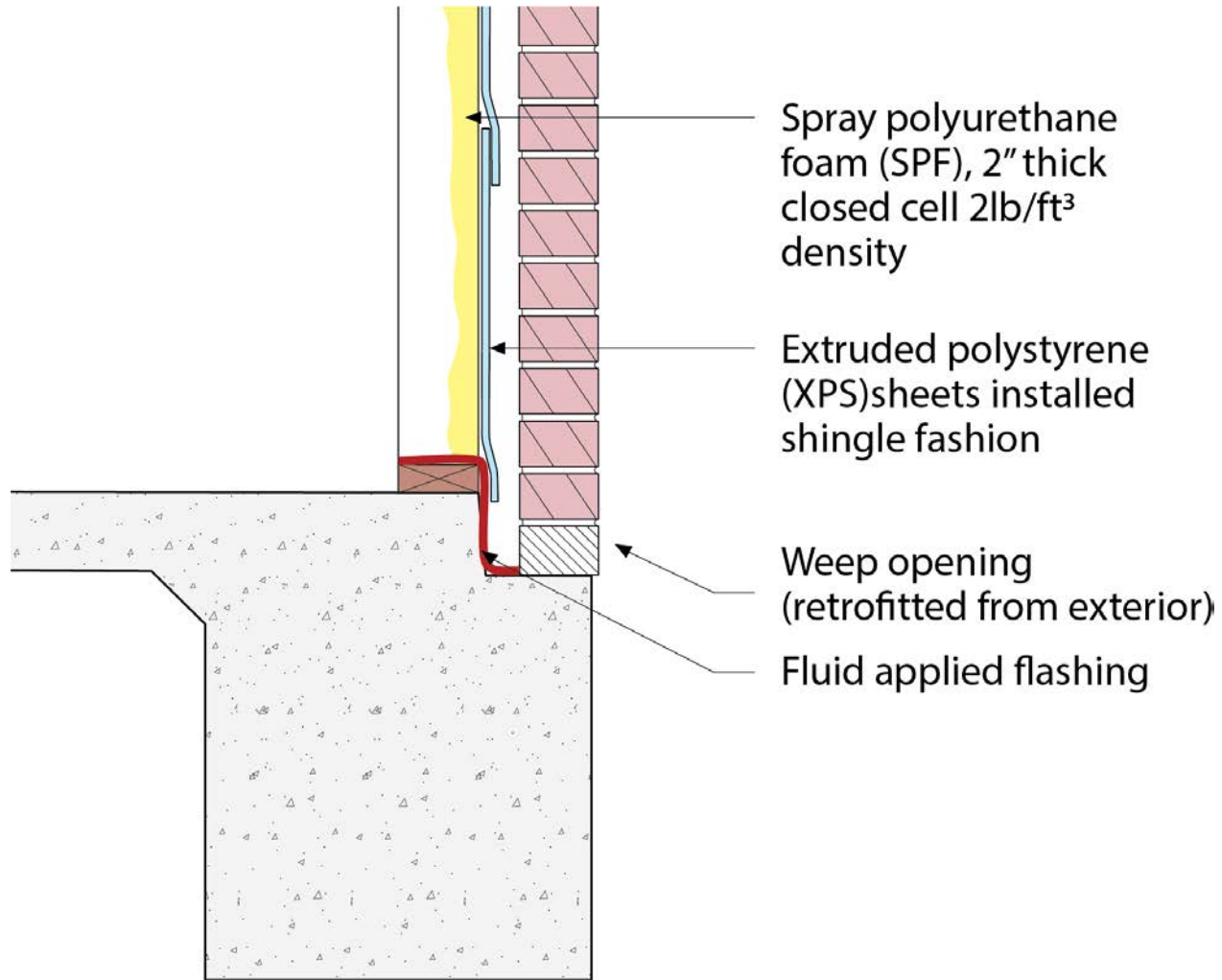




# Flood-Tolerant Wall Reconstruction

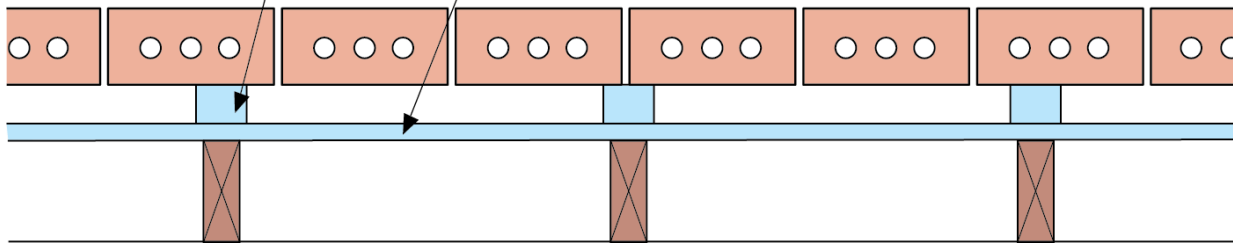


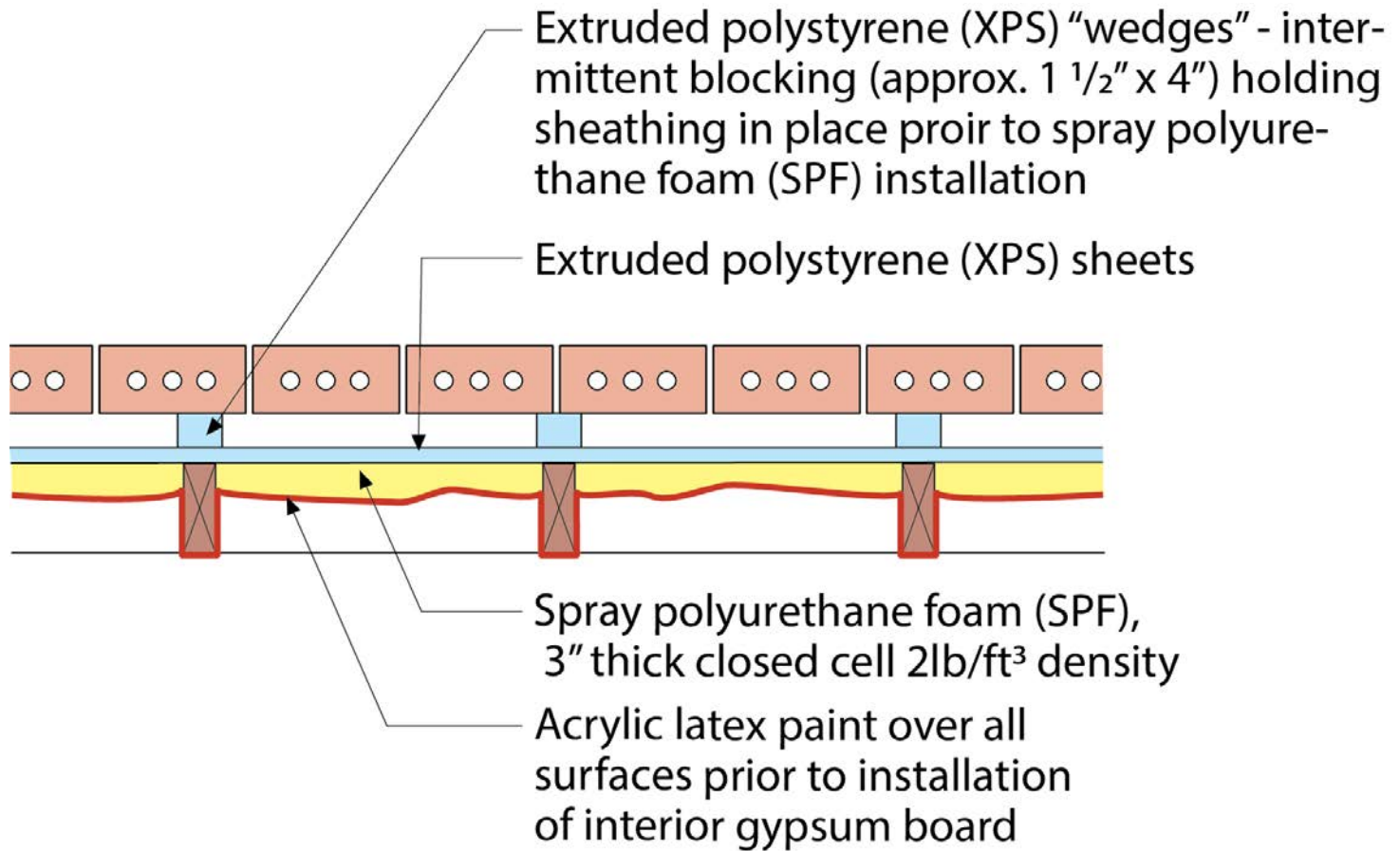


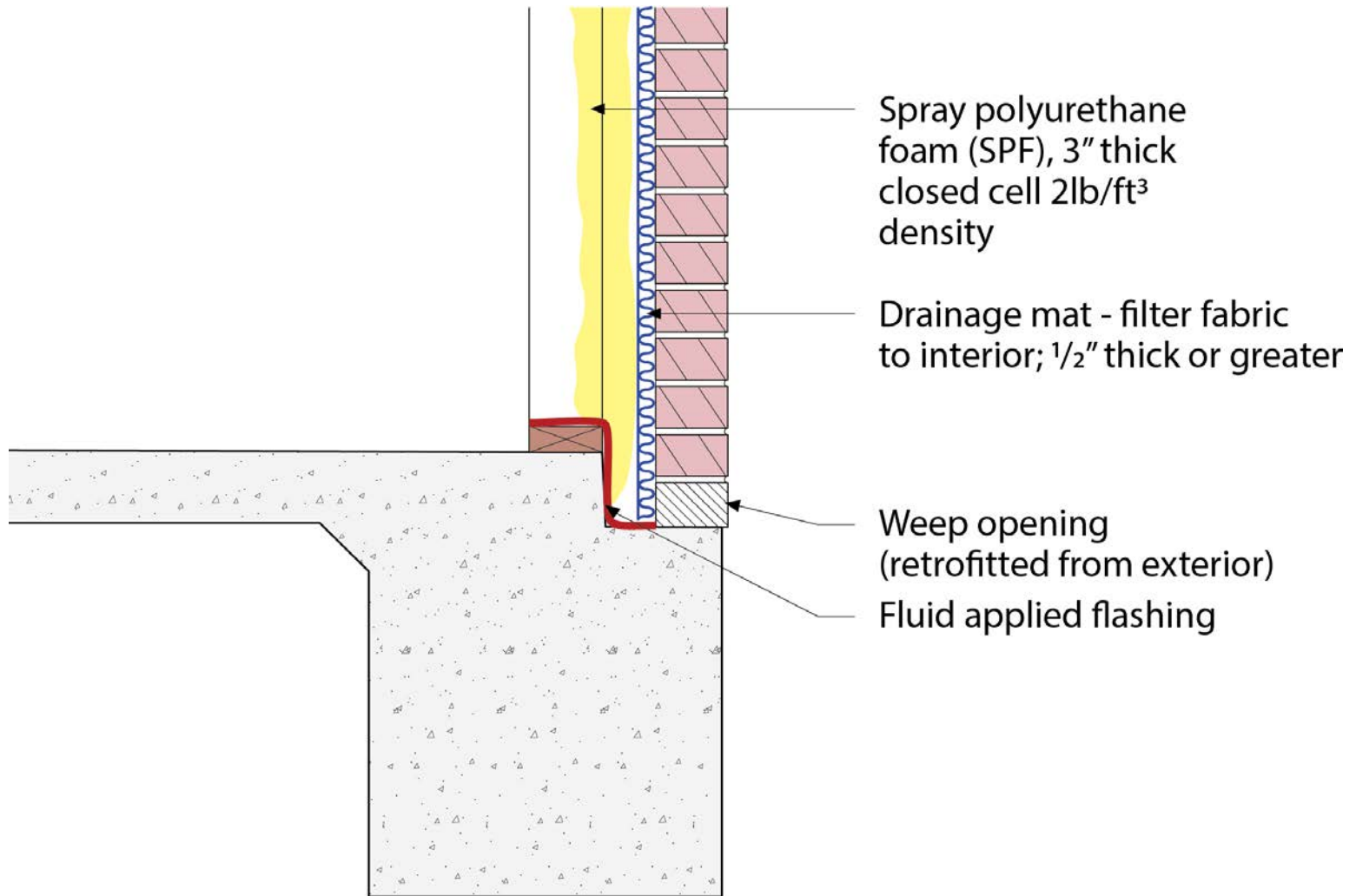


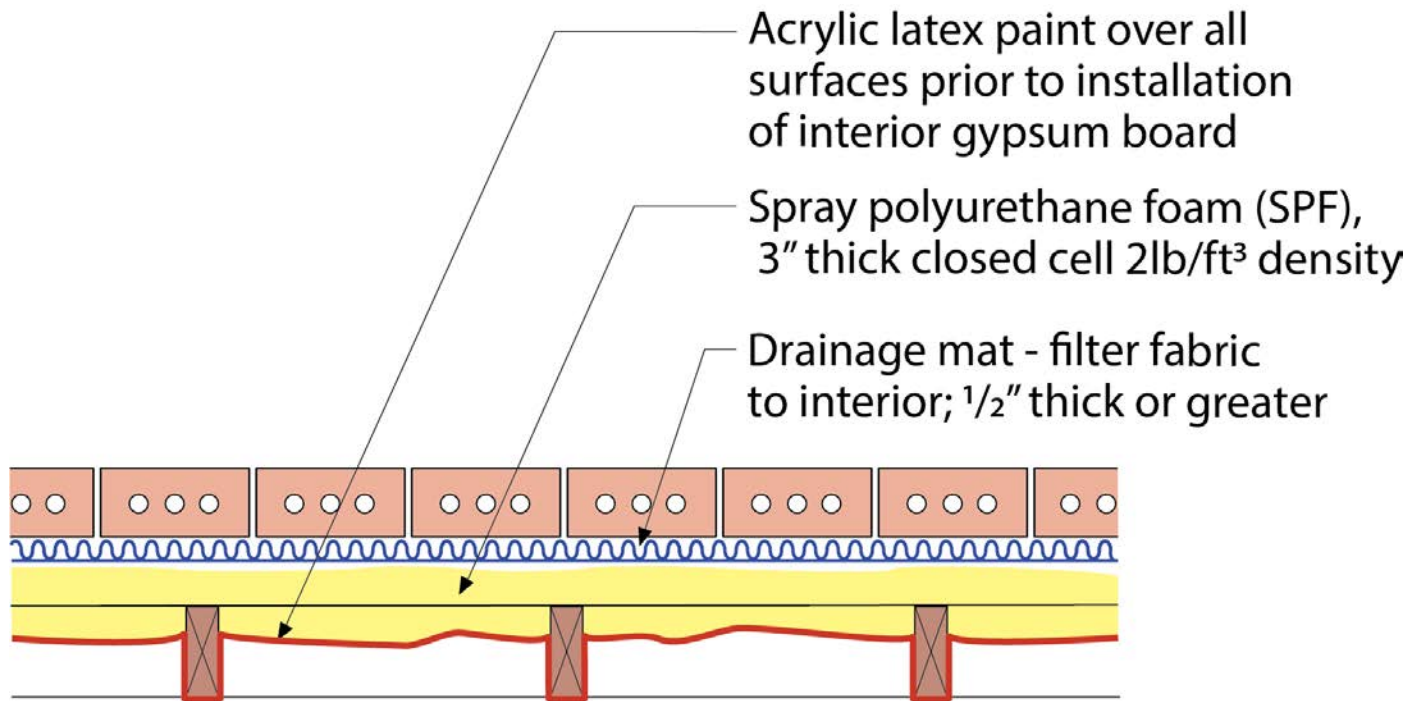
Extruded polystyrene (XPS) "wedges" - intermittent blocking (approx. 1 1/2" x 4") holding sheathing in place prior to spray polyurethane foam (SPF) installation

Extruded polystyrene (XPS) sheets









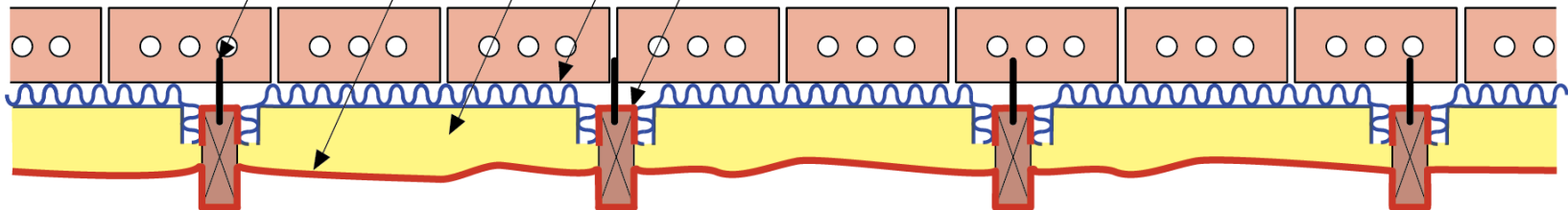
Existing brick ties

Acrylic latex paint over all surfaces prior to installation of interior gypsum board

Spray polyurethane foam (SPF), 3" thick closed cell 2lb/ft<sup>3</sup> density

Drainage mat - filter fabric to interior; 1/2" thick or greater

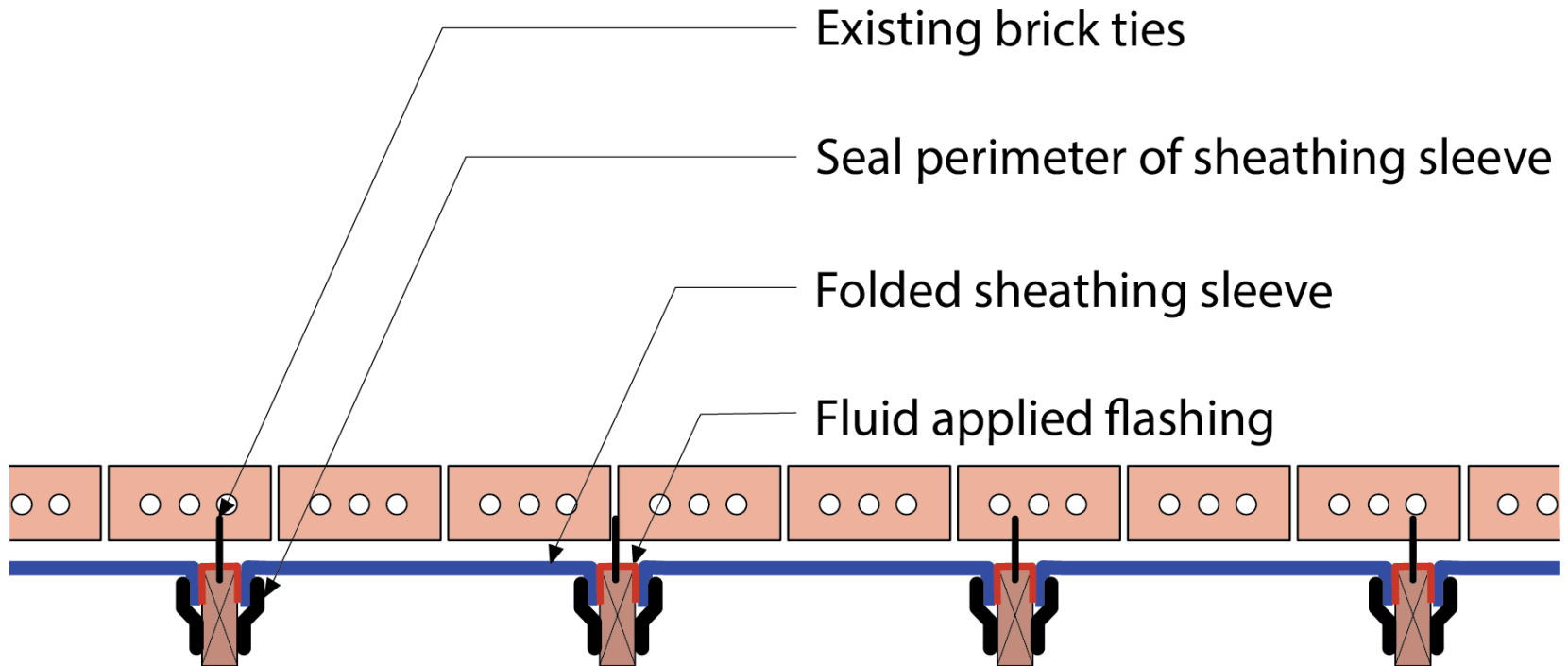
Fluid applied flashing

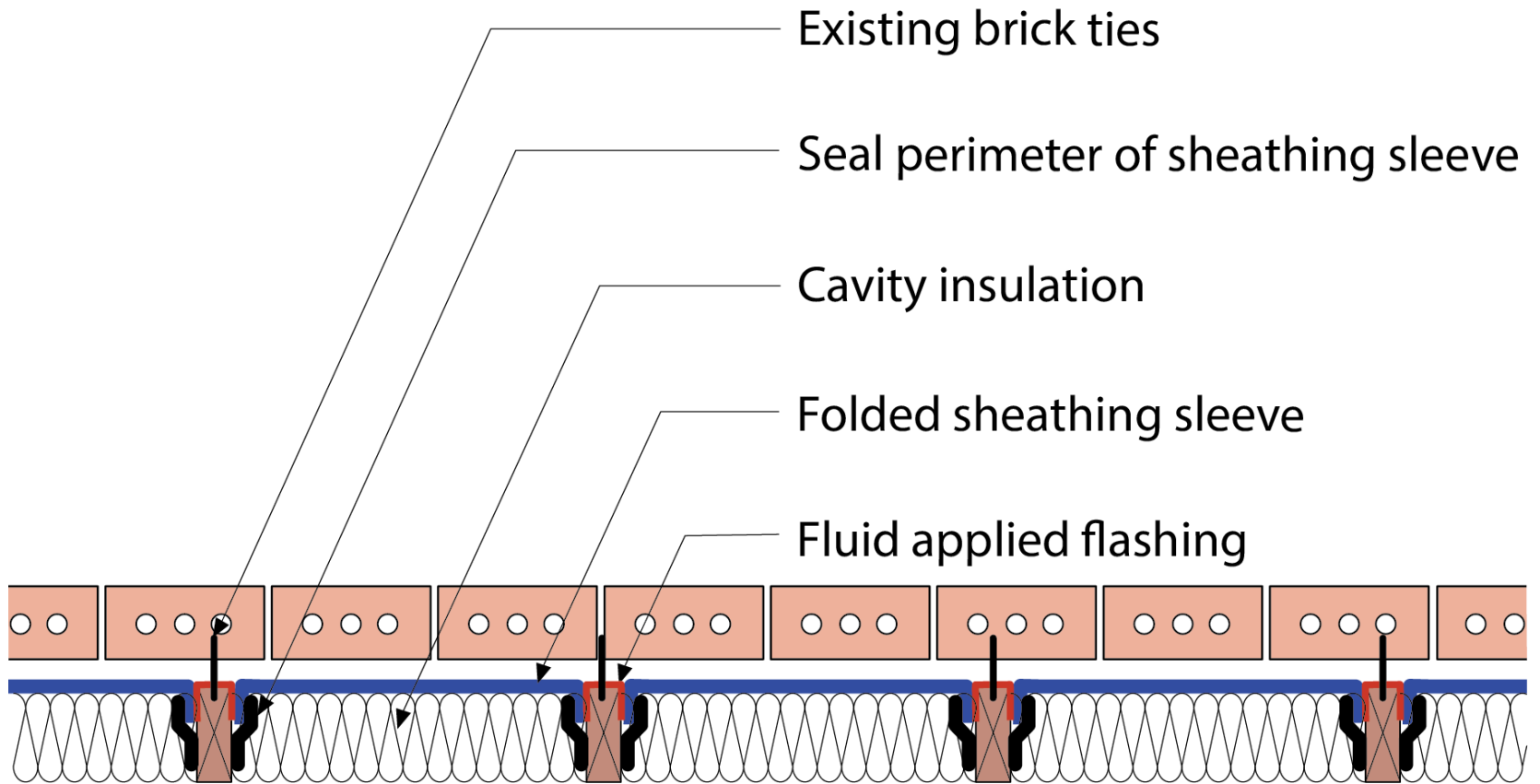


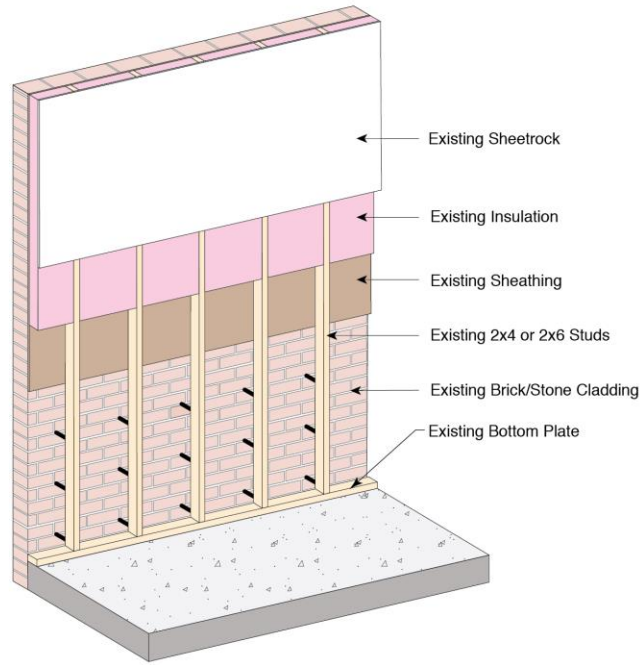


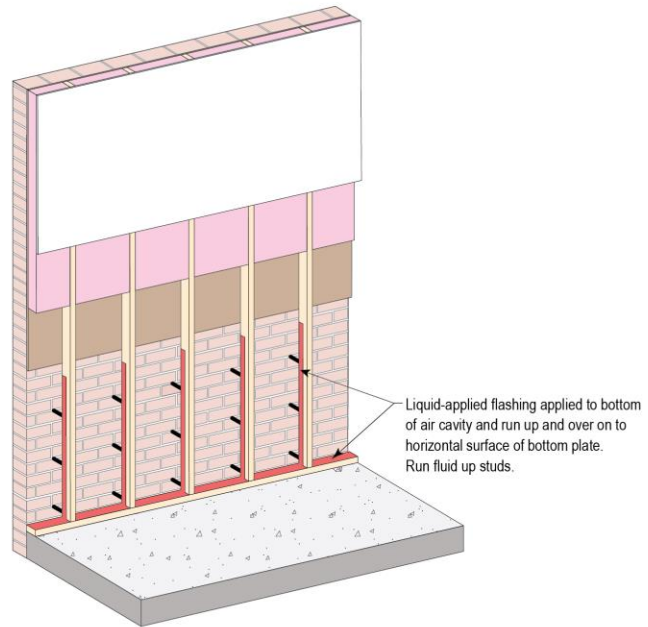


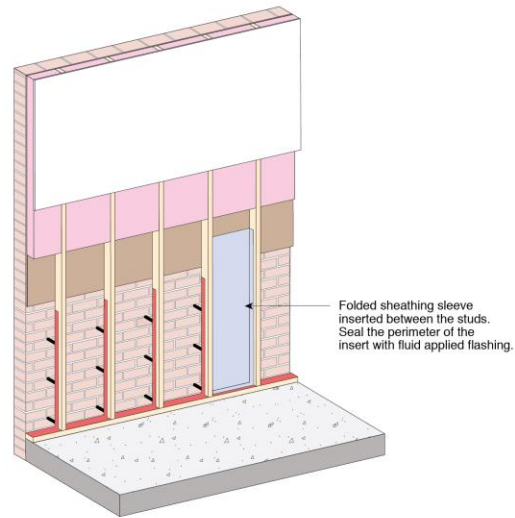


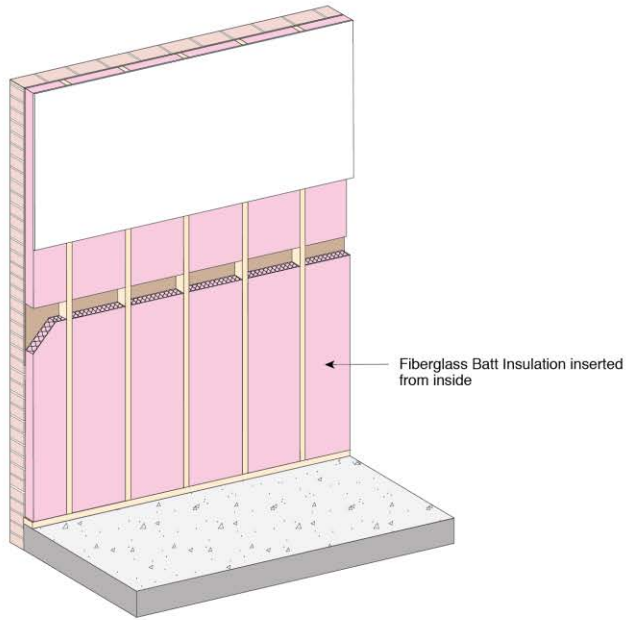




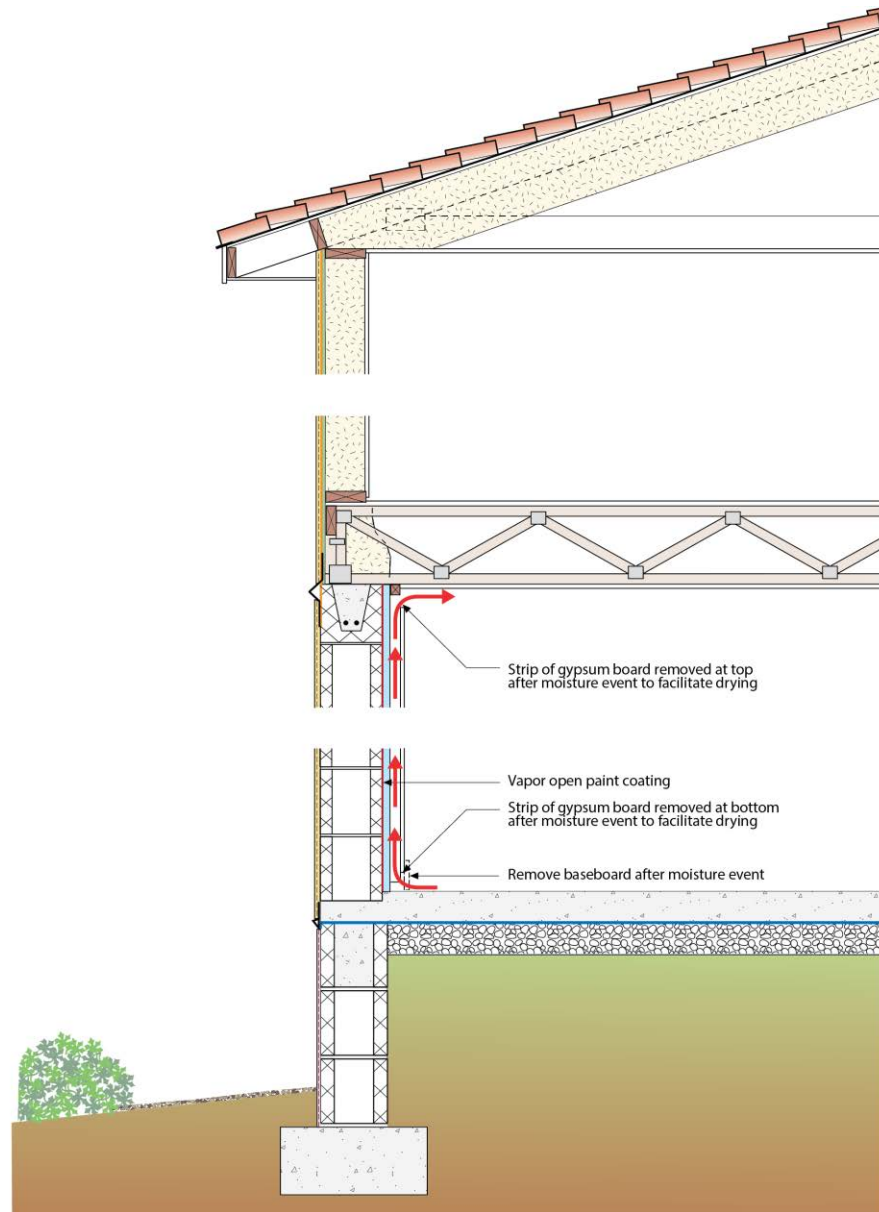


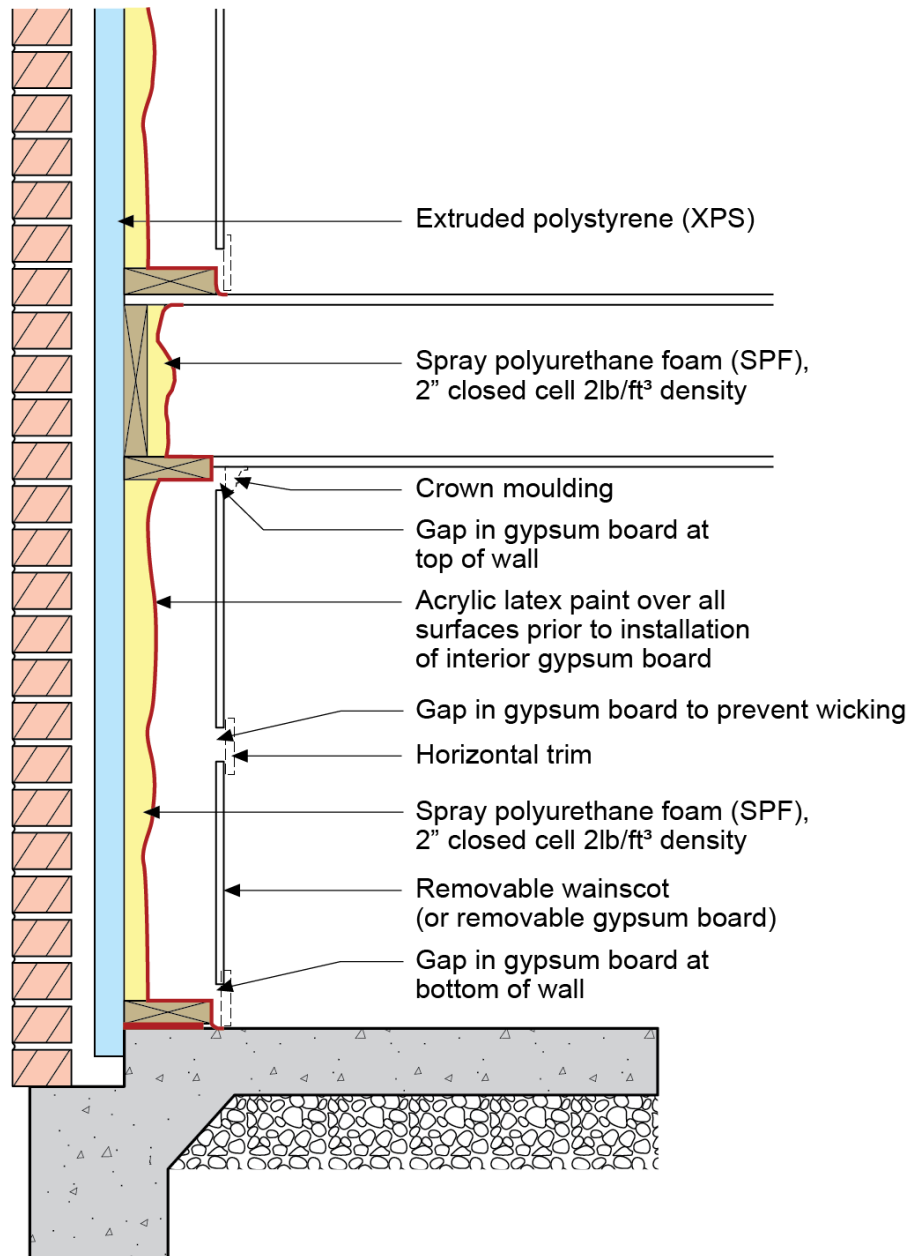


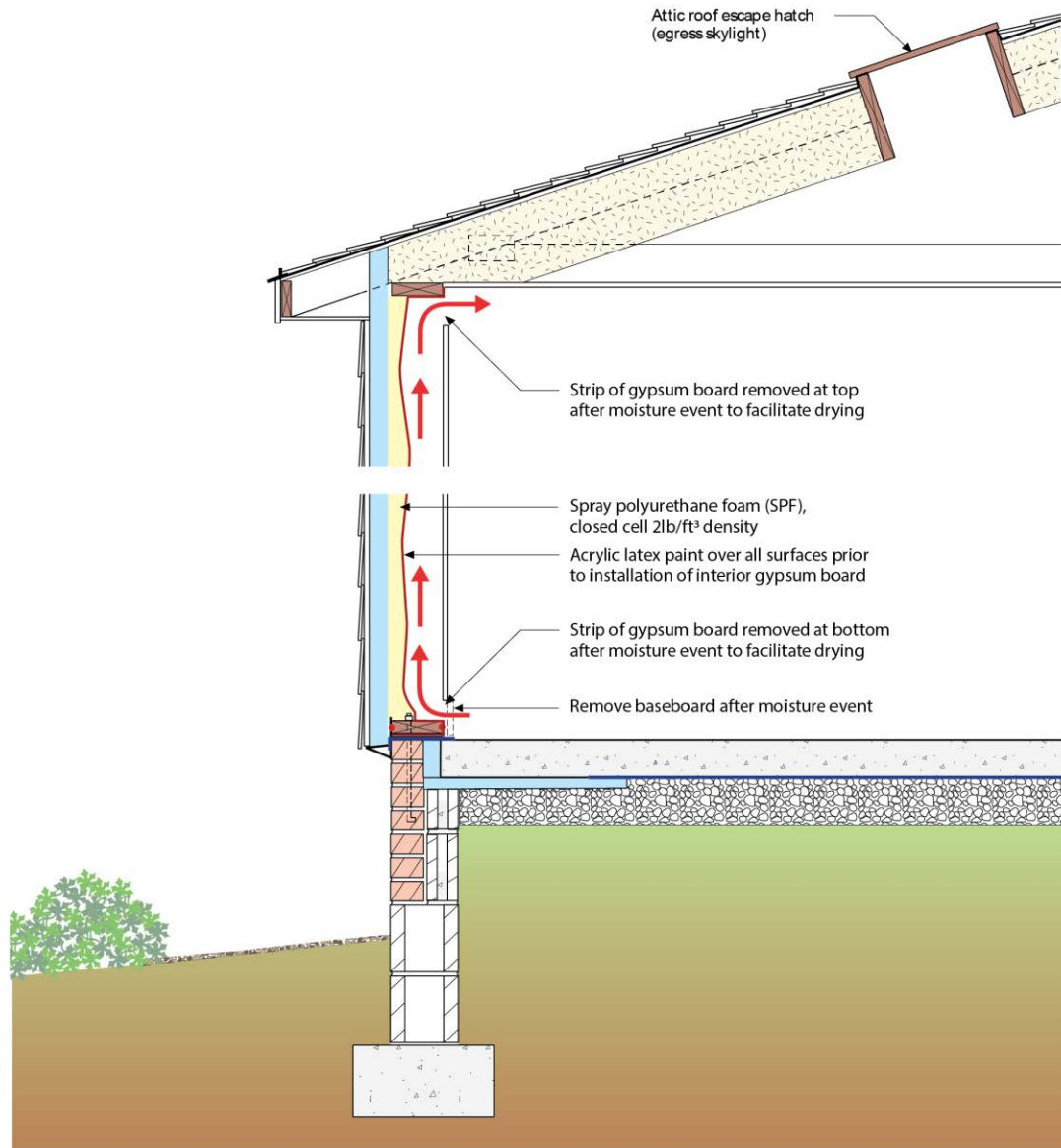


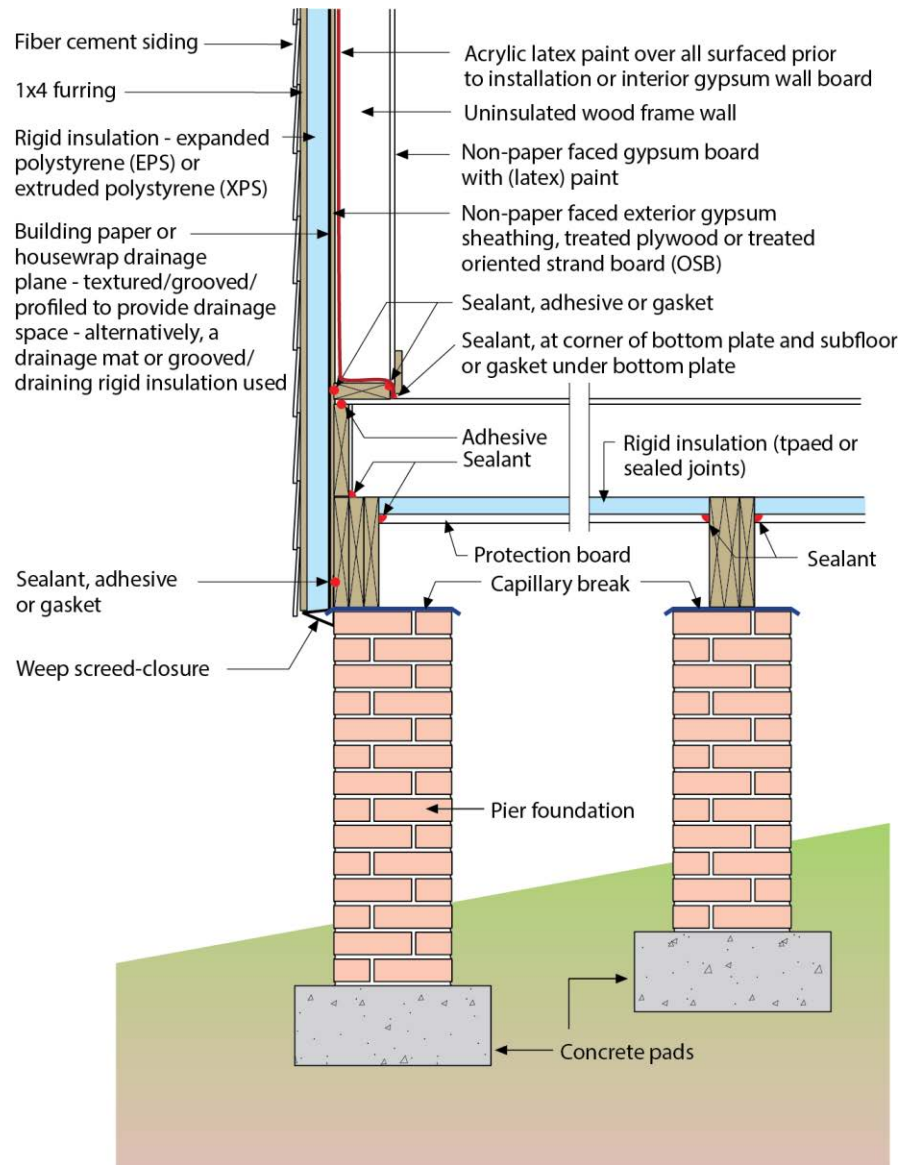


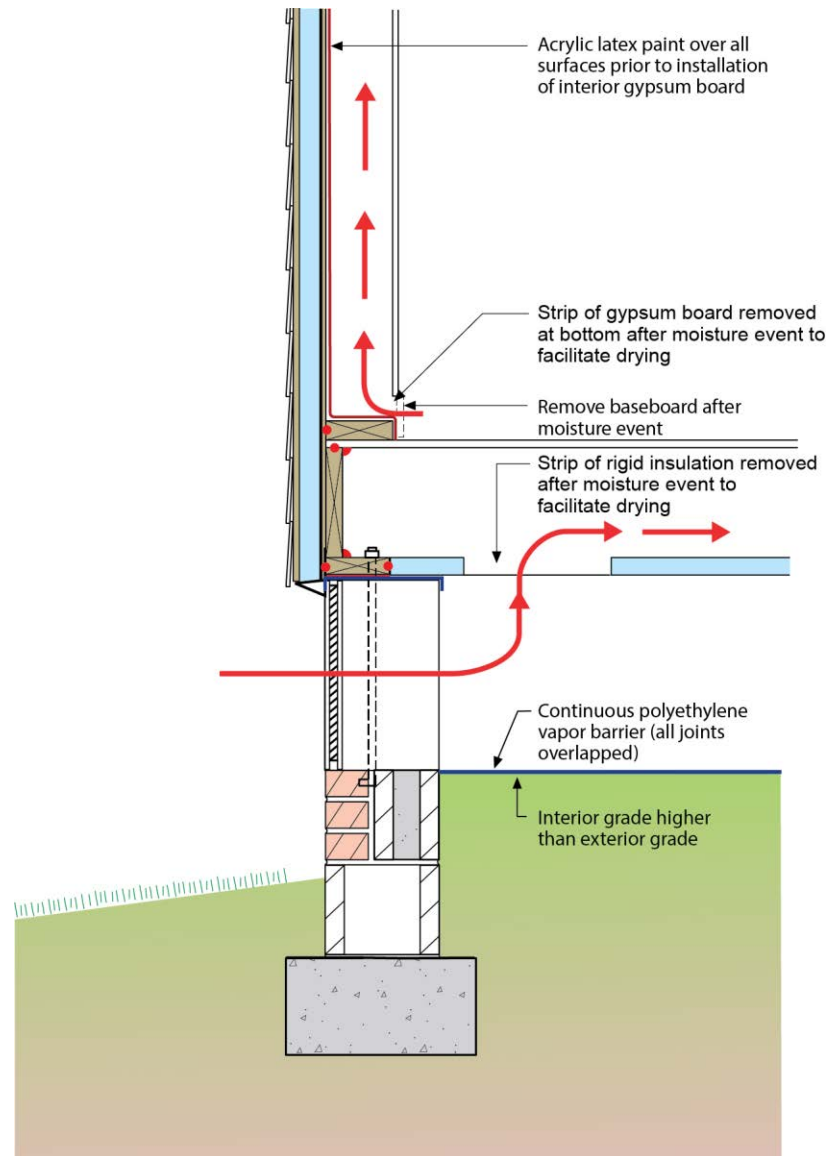


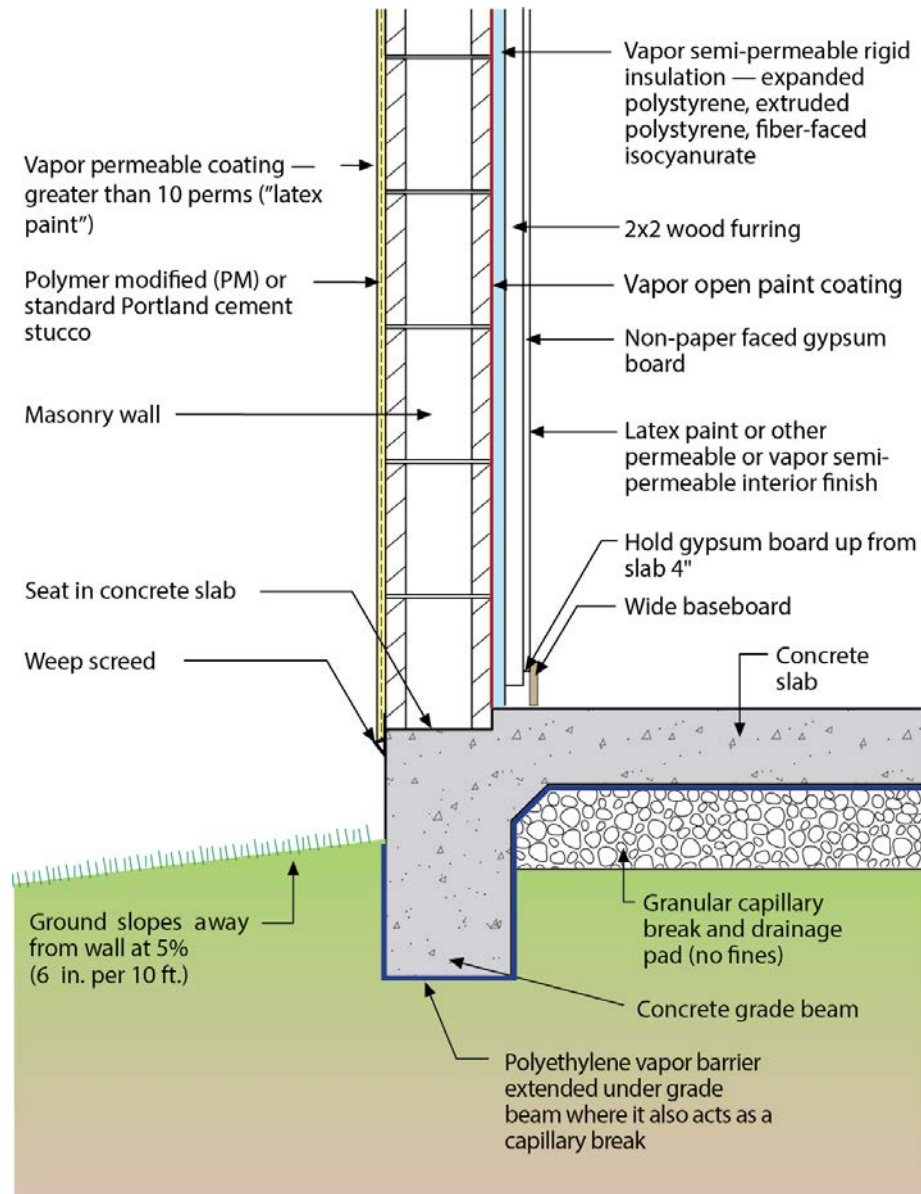




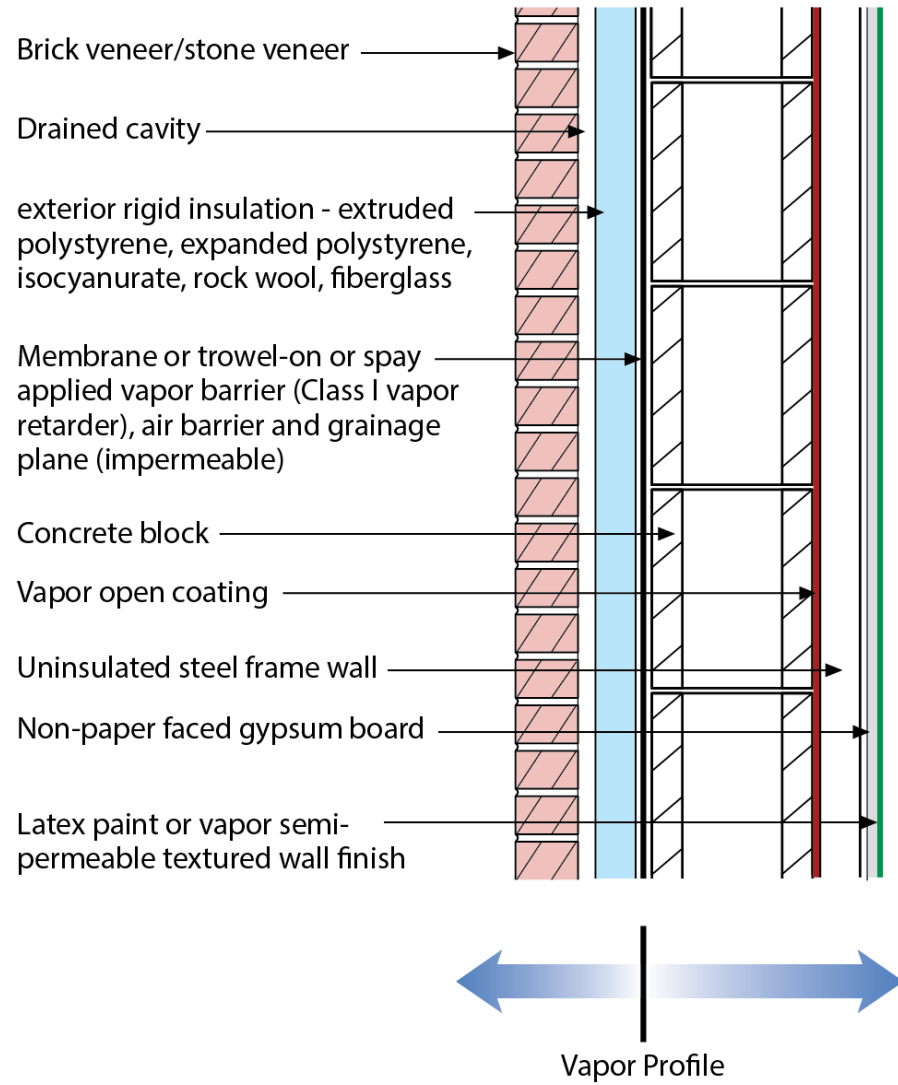




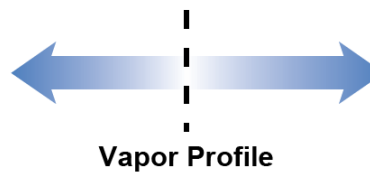
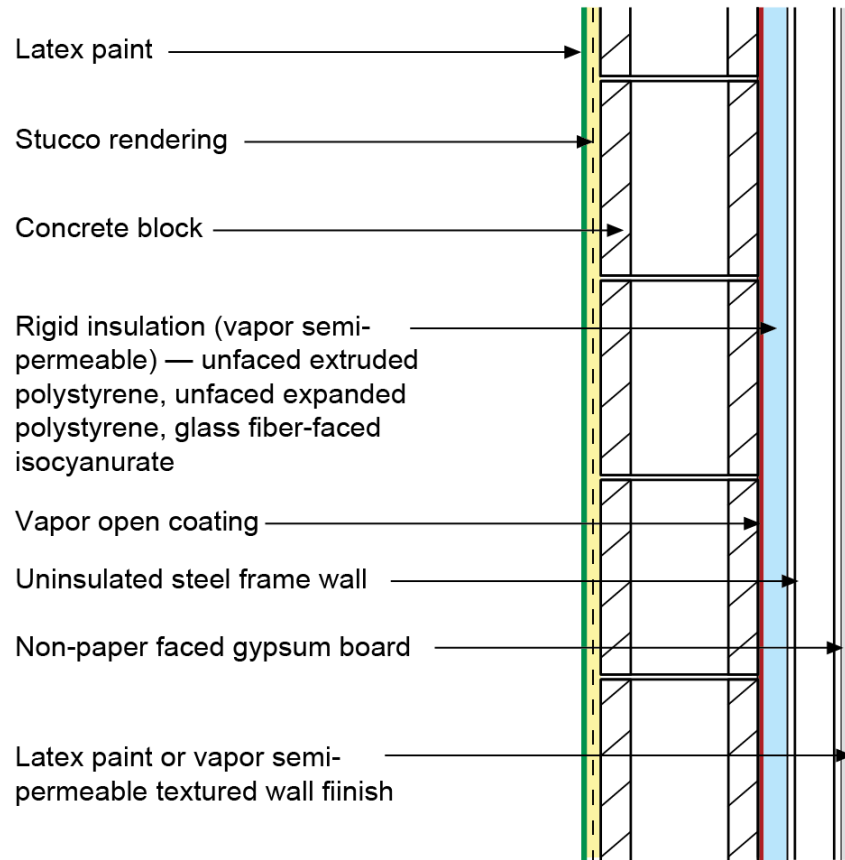


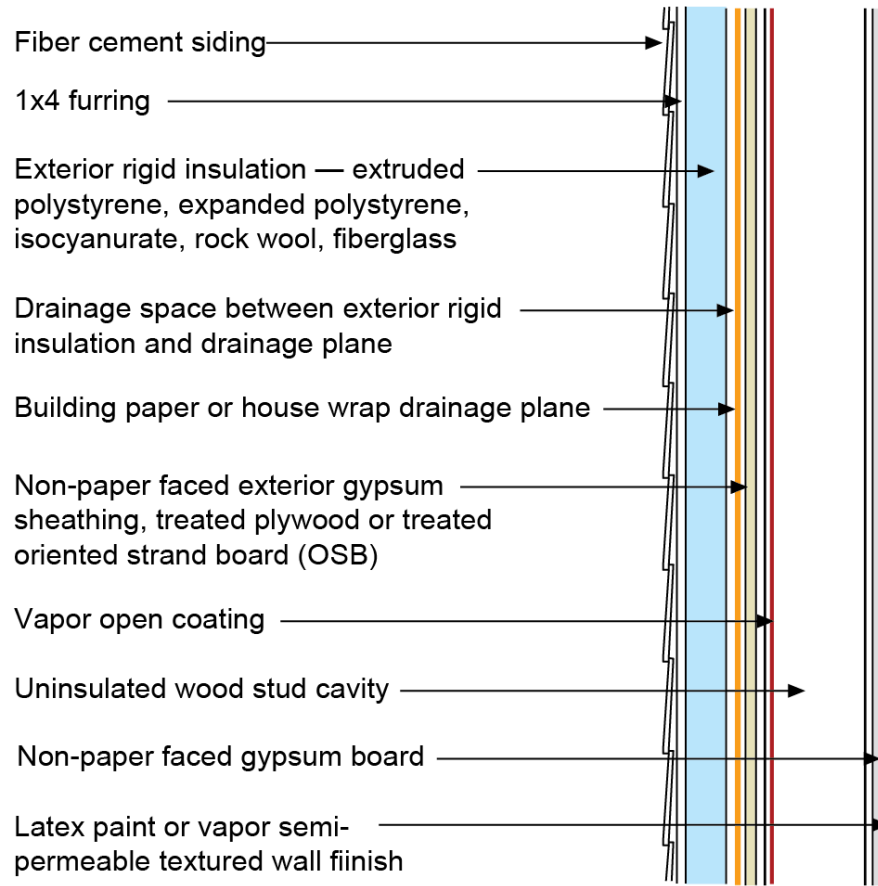












**Vapor Profile**

