

Joseph Lstiburek, Ph.D., P.Eng, ASHRAE Fellow

Building Science

Adventures In Building Science

presented by www.buildingscience.com

What is a Building?

A Building is an Environmental Separator

- Control heat flow
- Control airflow
- Control water vapor flow
- Control rain
- Control ground water
- Control light and solar radiation
- Control noise and vibrations
- Control contaminants, environmental hazards and odors
- Control insects, rodents and vermin
- Control fire
- Provide strength and rigidity
- Be durable
- Be aesthetically pleasing
- Be economical

Arrhenius Equation

For Every 10 Degree K Rise
Activation Energy Doubles

$$k = Ae^{-E_a/(RT)}$$

Damage Functions

Water

Heat

Ultra-violet Radiation

2nd Law of Thermodynamics

In an isolated system, a process can occur only if it increases the total entropy of the system

Rudolf Clausius

Heat Flow Is From Warm To Cold

Moisture Flow Is From Warm To Cold

Moisture Flow Is From More To Less

Air Flow Is From A Higher Pressure to a
Lower Pressure

Gravity Acts Down

Thermodynamic Potential



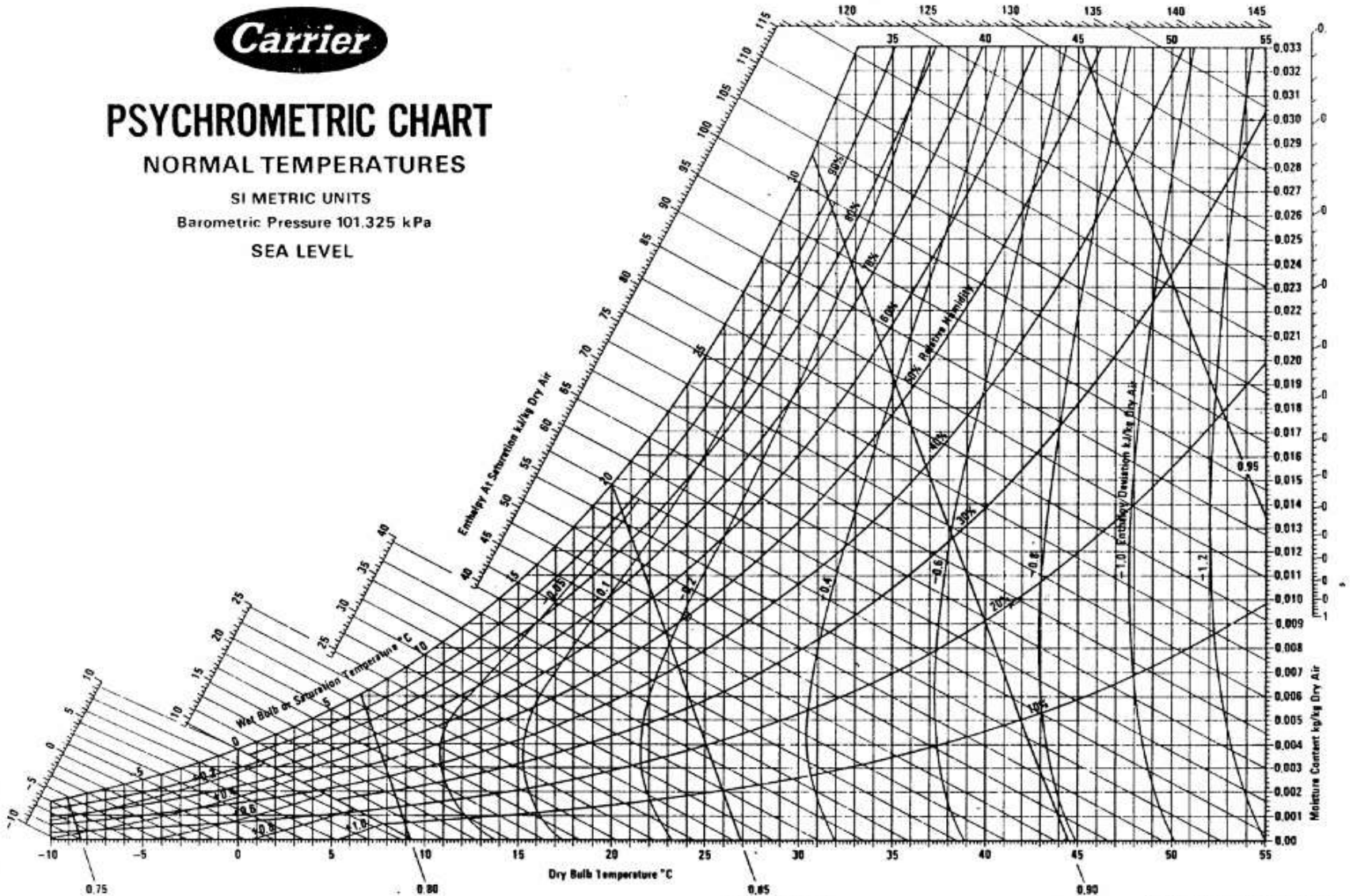
PSYCHROMETRIC CHART

NORMAL TEMPERATURES

SI METRIC UNITS

Barometric Pressure 101.325 kPa

SEA LEVEL



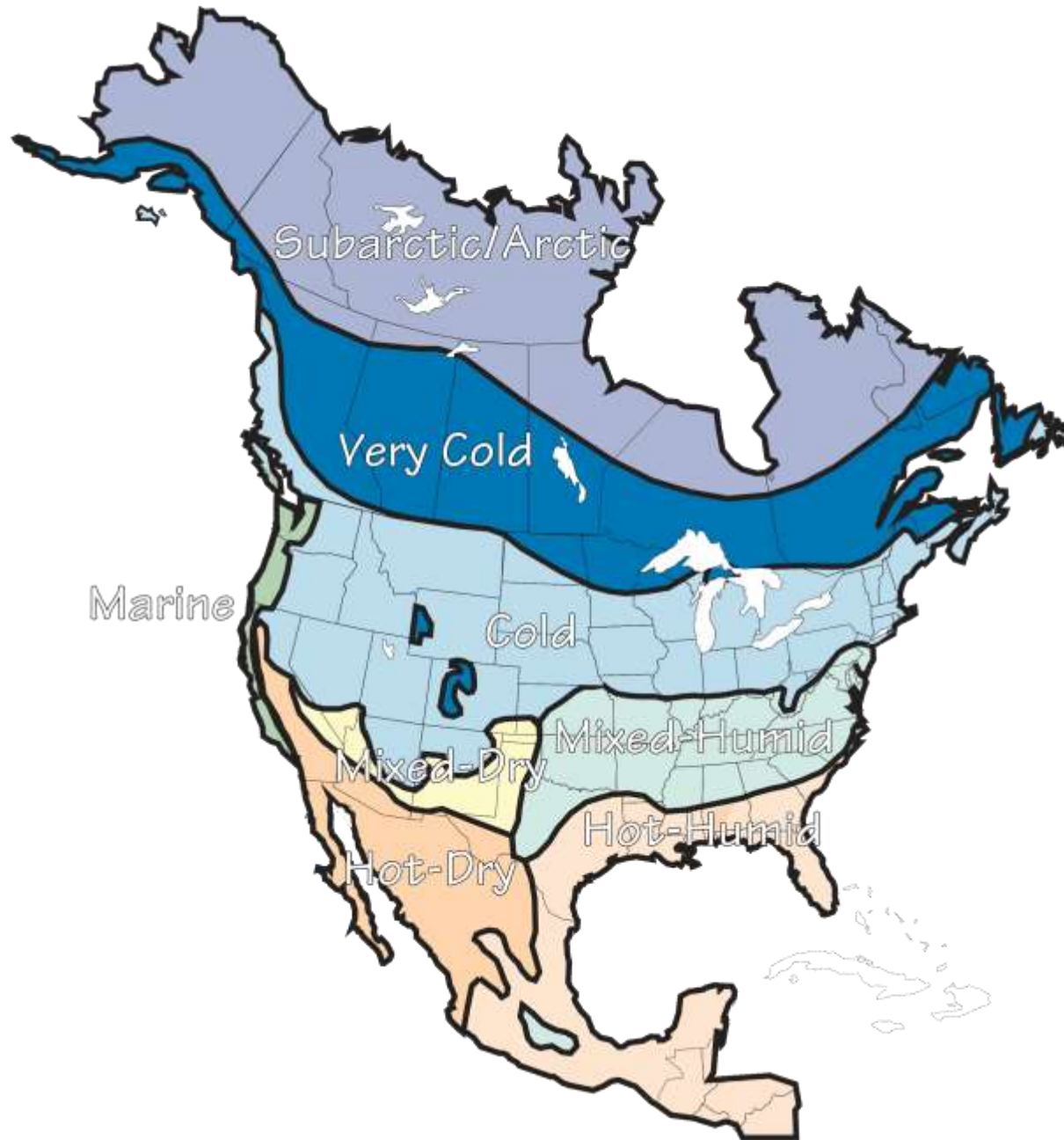
Below 0°C Properties and Enthalpy Deviation Lines Are For Ice

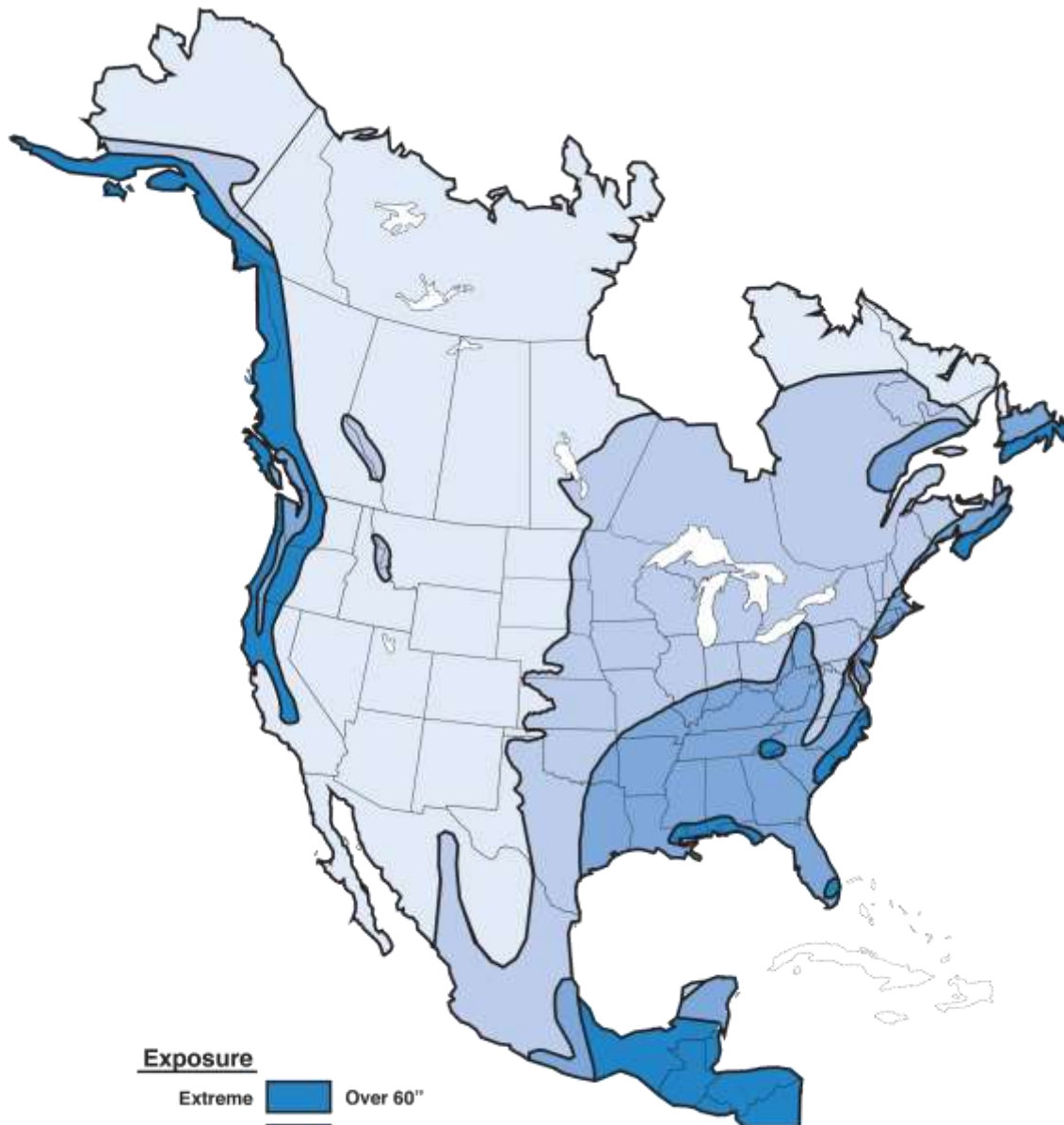
Copyright ©Carrier Corporation 1975
Cat. No. 794 002 Printed in U.S.A.






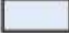
Freeze-Thaw Damage

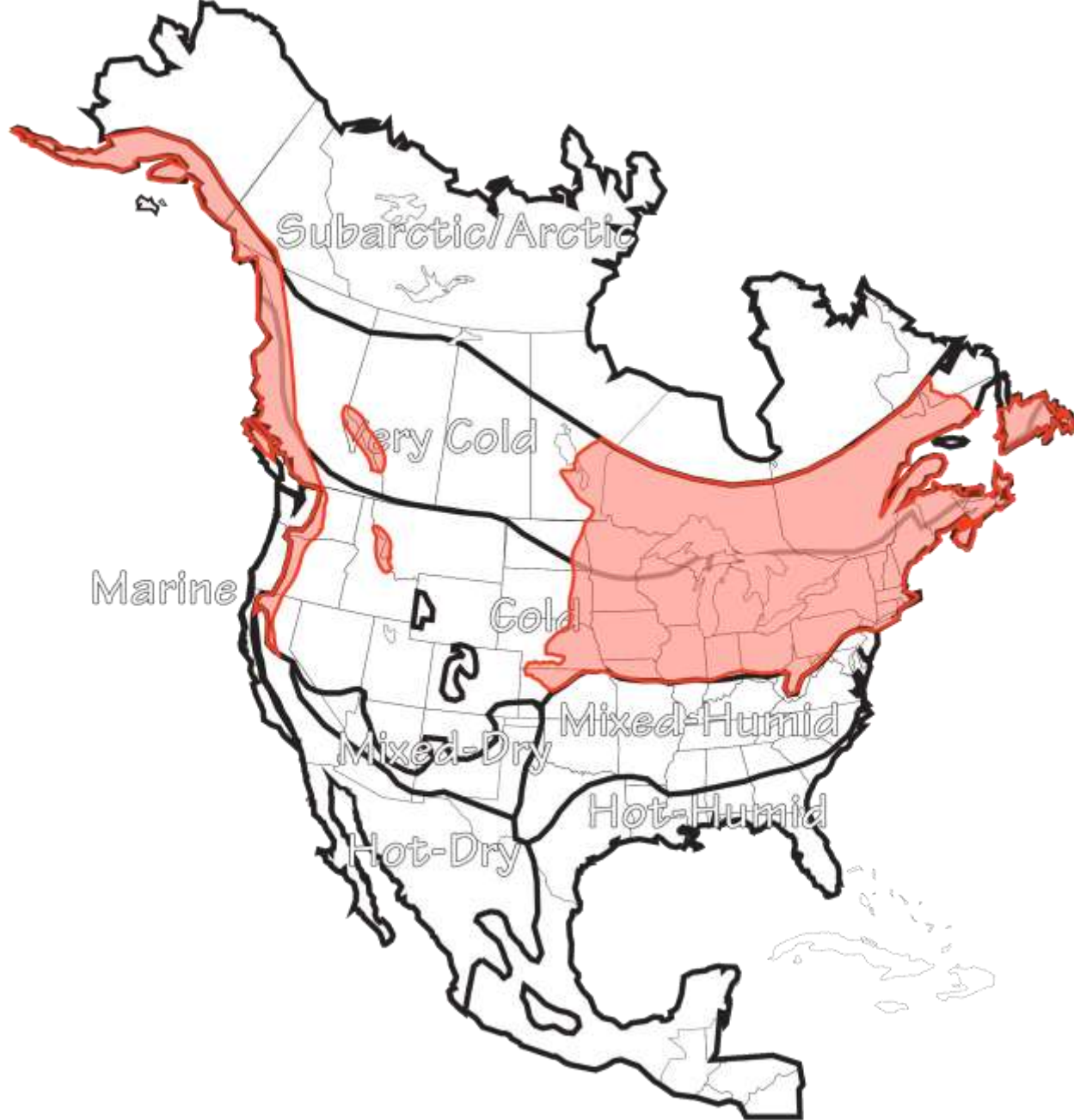
Freeze-Thaw Damage
Freezing Temperatures
Water
Susceptible Brick



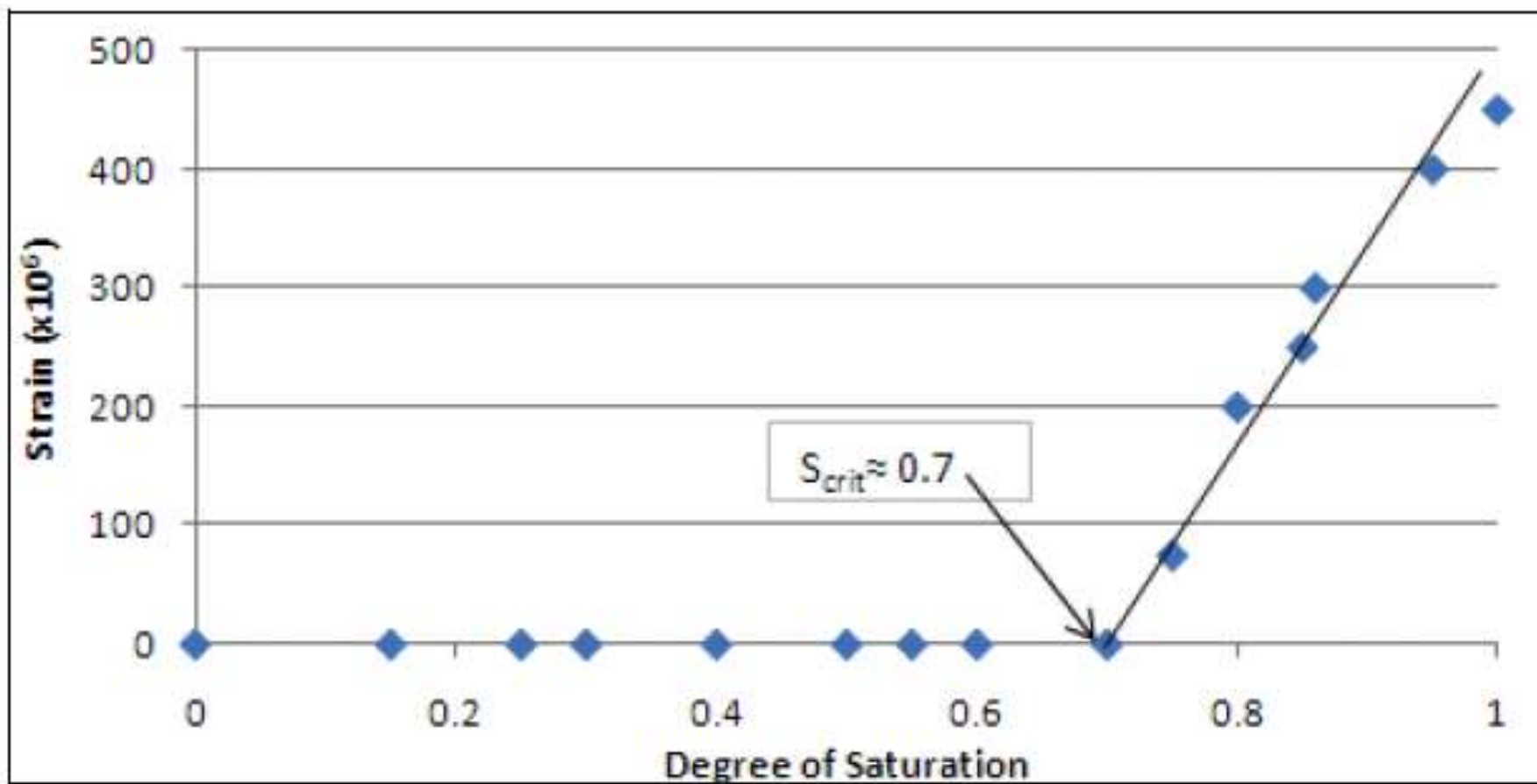


Exposure

- | | | |
|----------|---|-----------|
| Extreme |  | Over 60" |
| High |  | 40" - 60" |
| Moderate |  | 20" - 40" |
| Low |  | Under 20" |

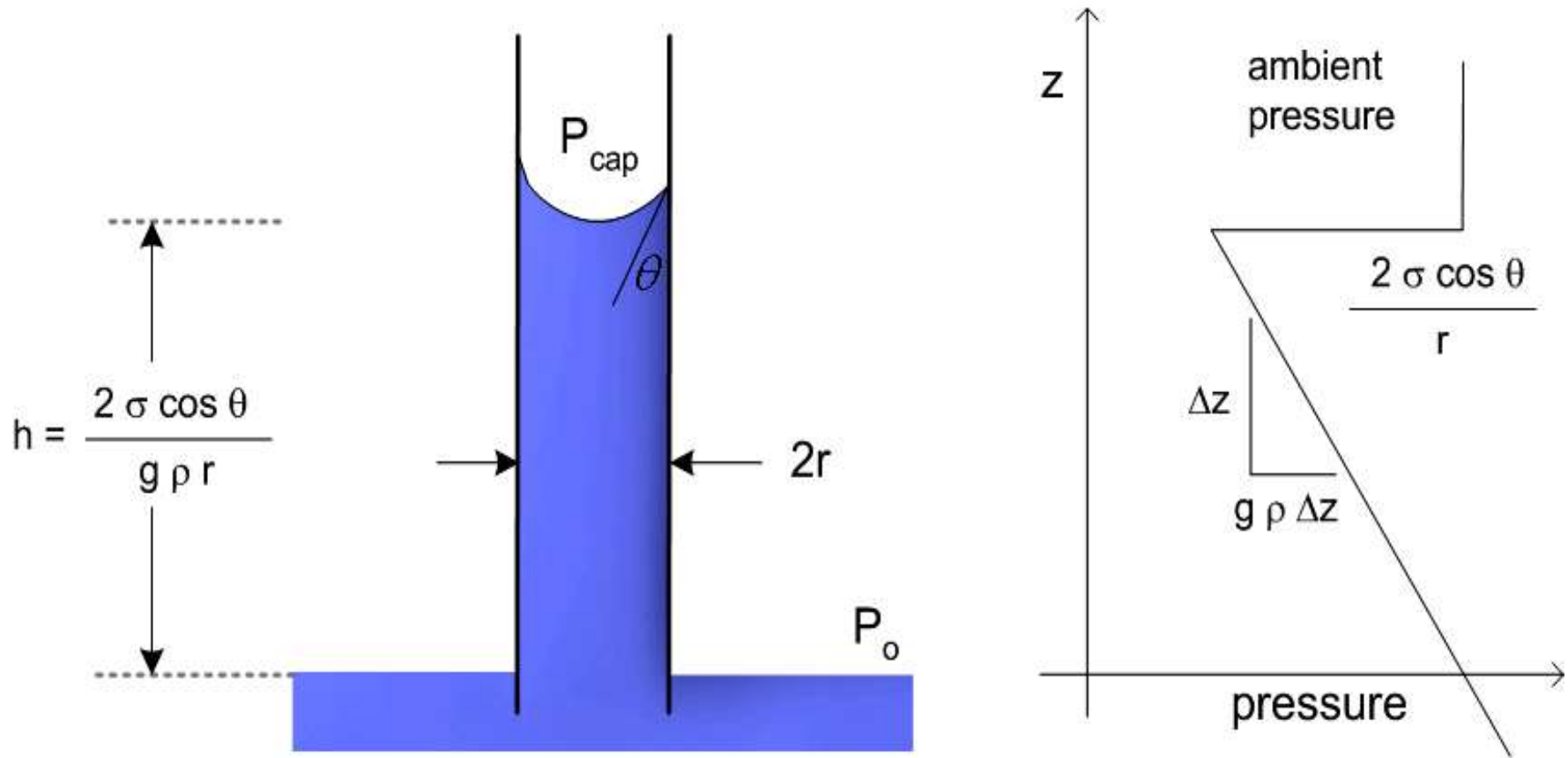


Susceptible Brick Firing Temperature Vitrification

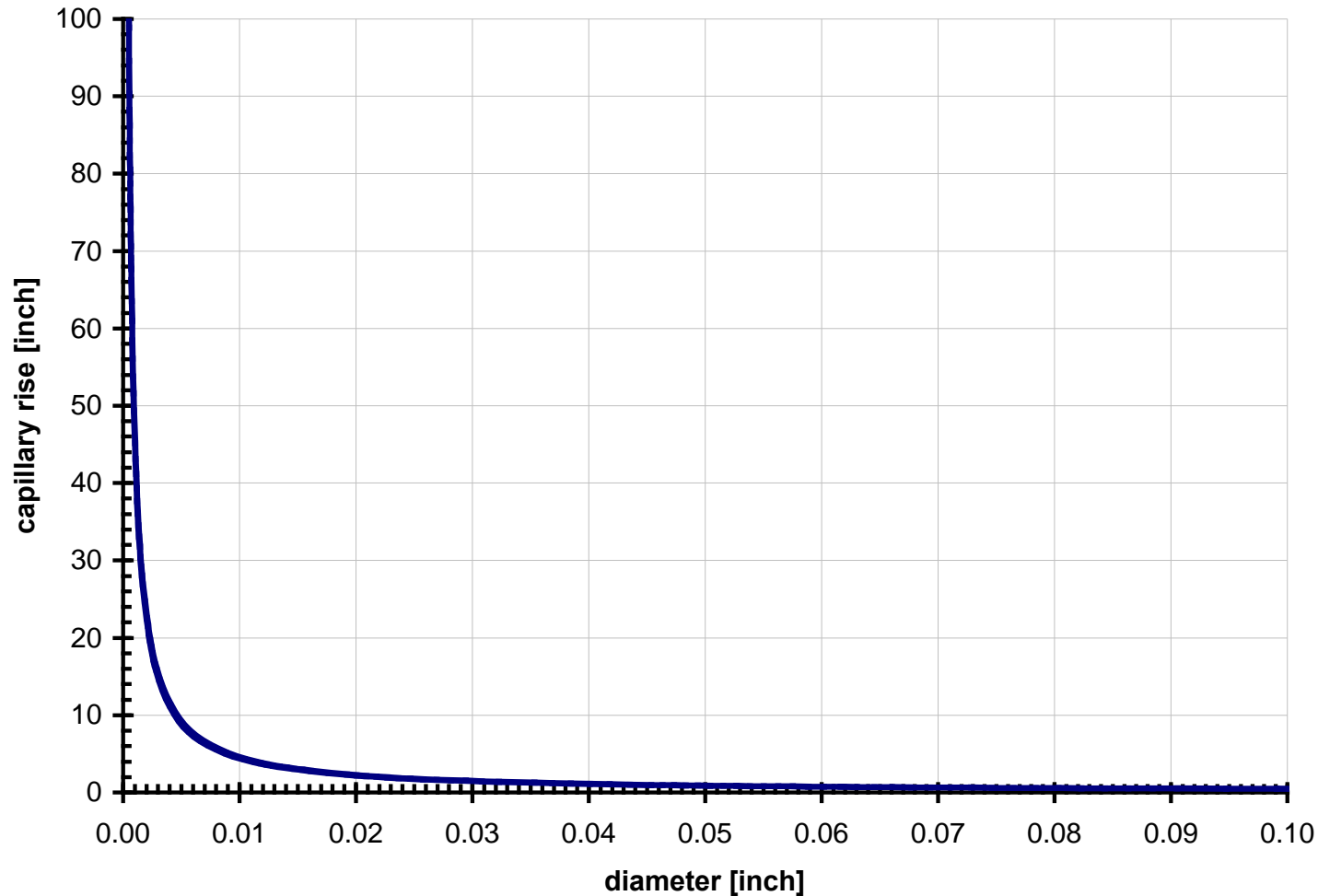


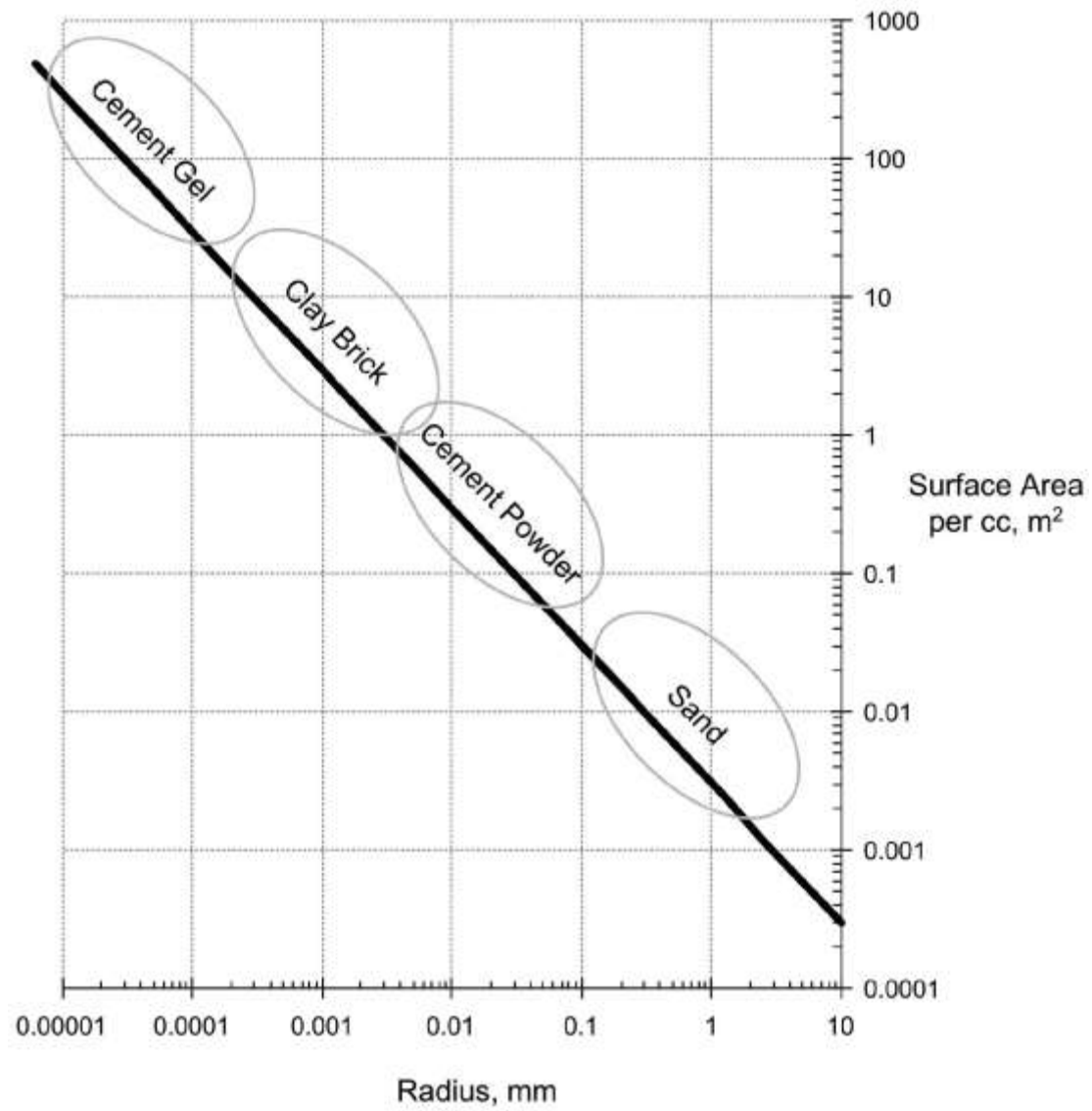


Calculating capillary rise



Capillary rise versus diameter





Surface area vs. particle size
From Straube & Burnett, 2005

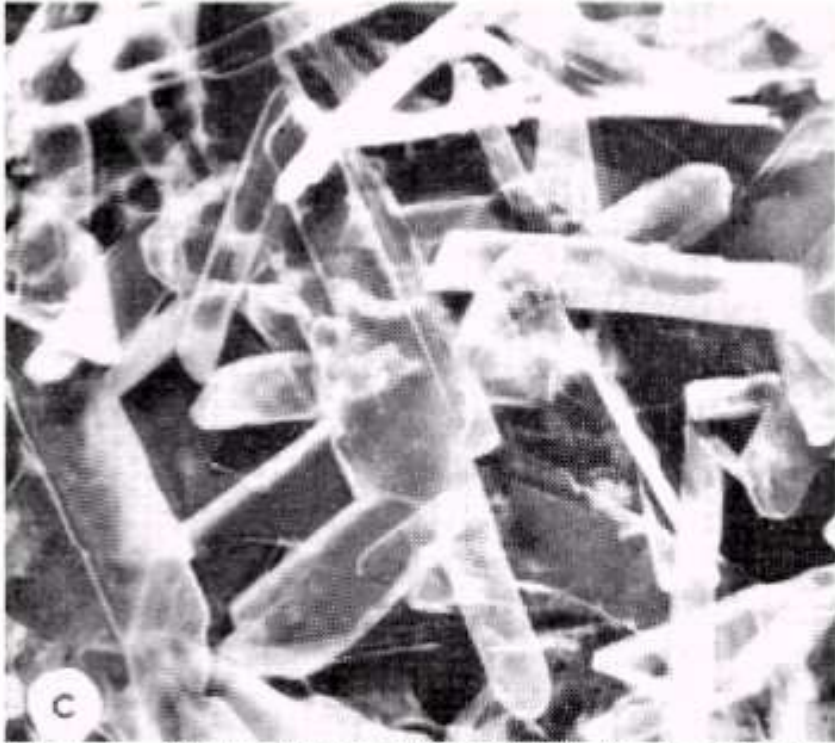


Figure 1c. Gypsum, hydrated from plaster of paris and water, porosity 30 per cent.

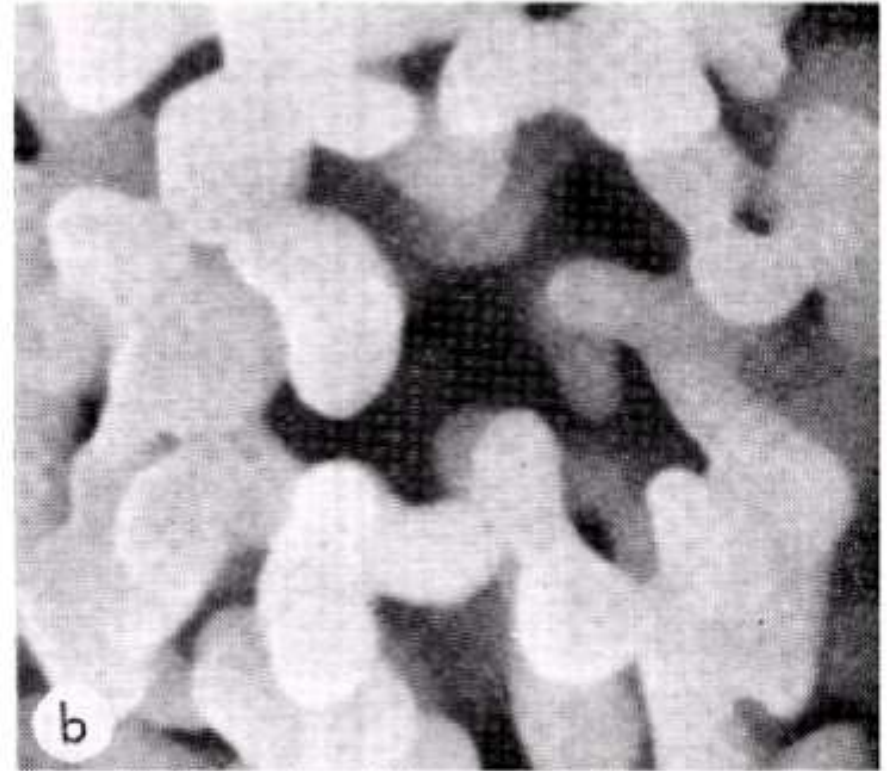
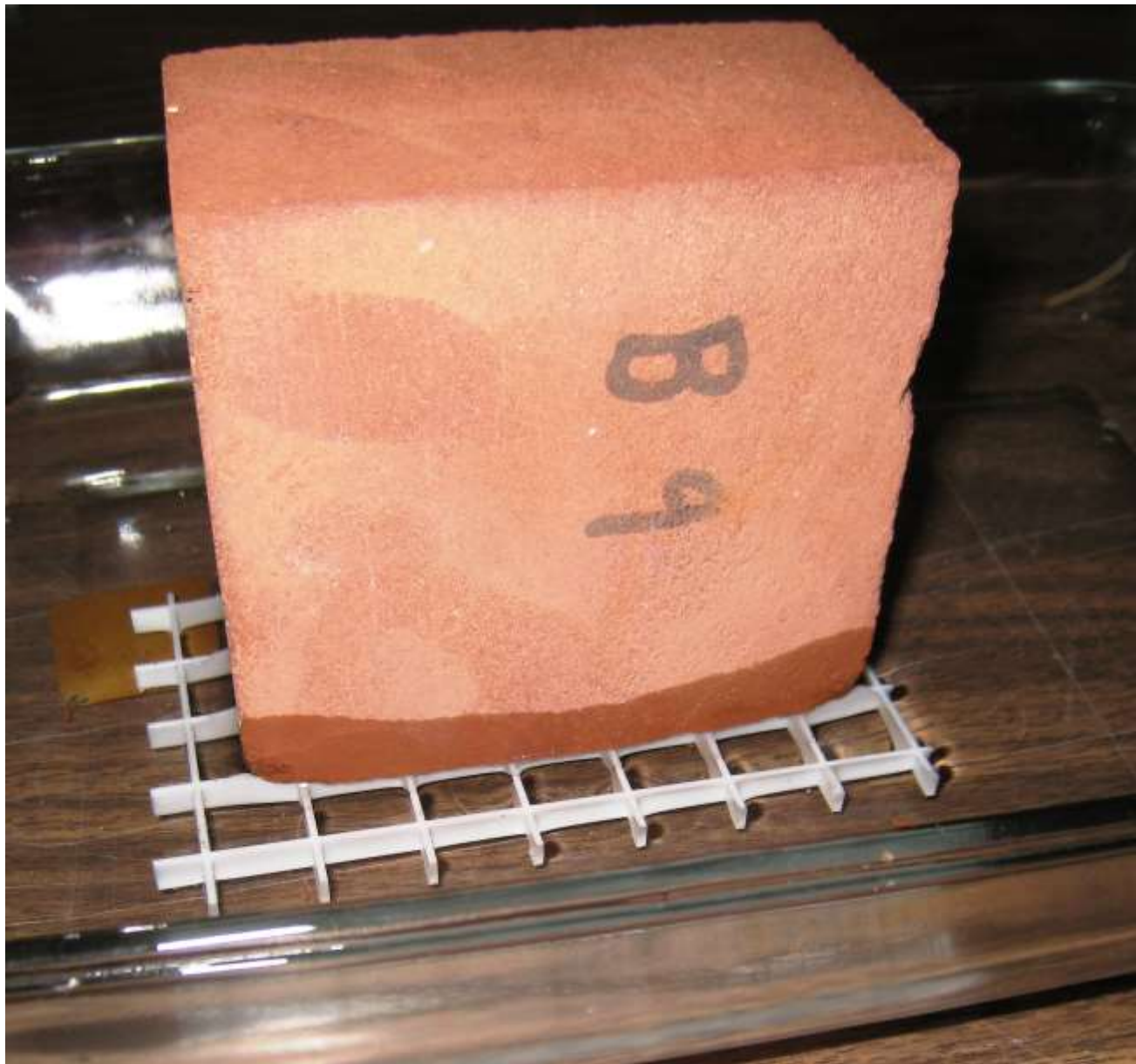
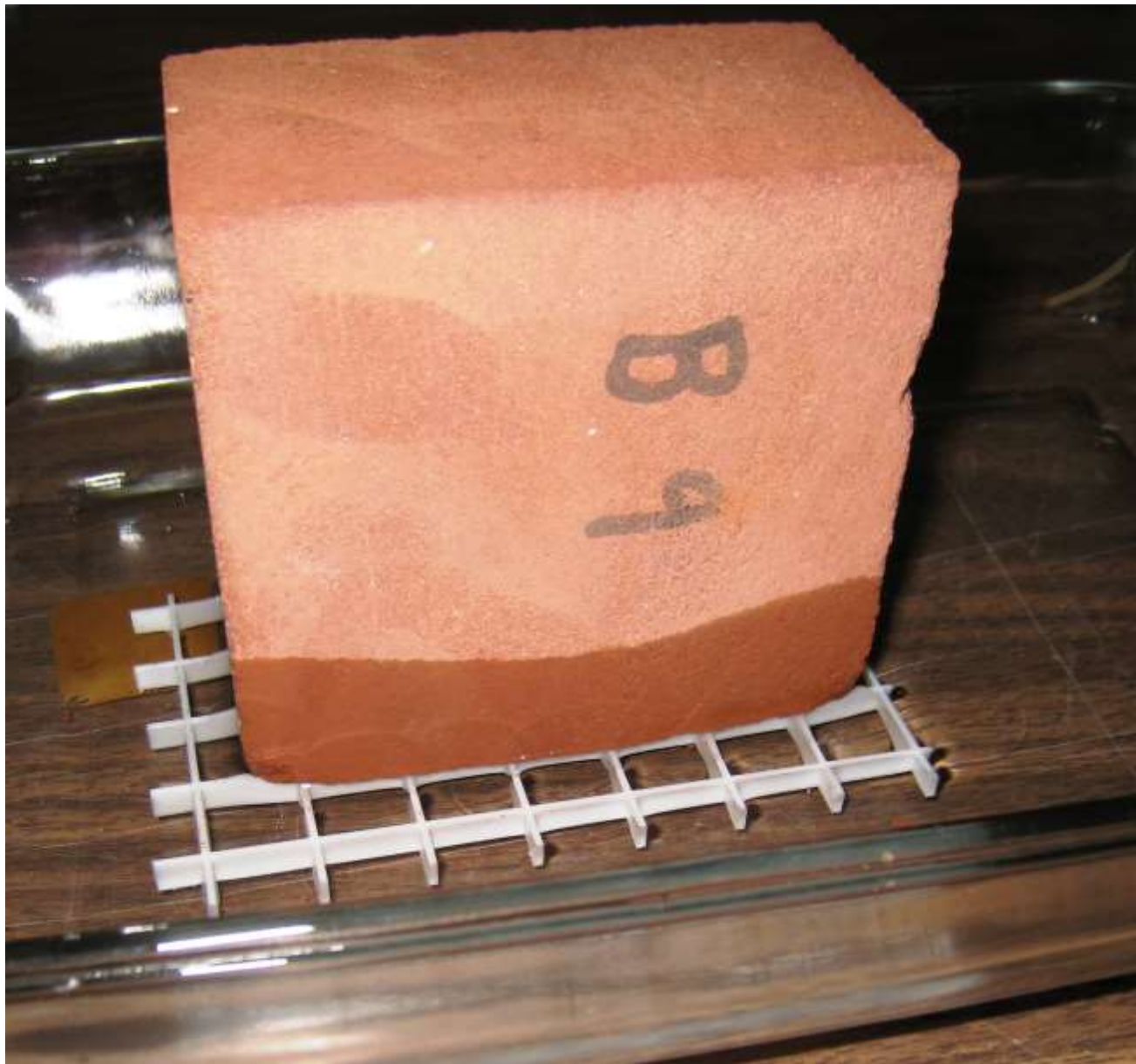
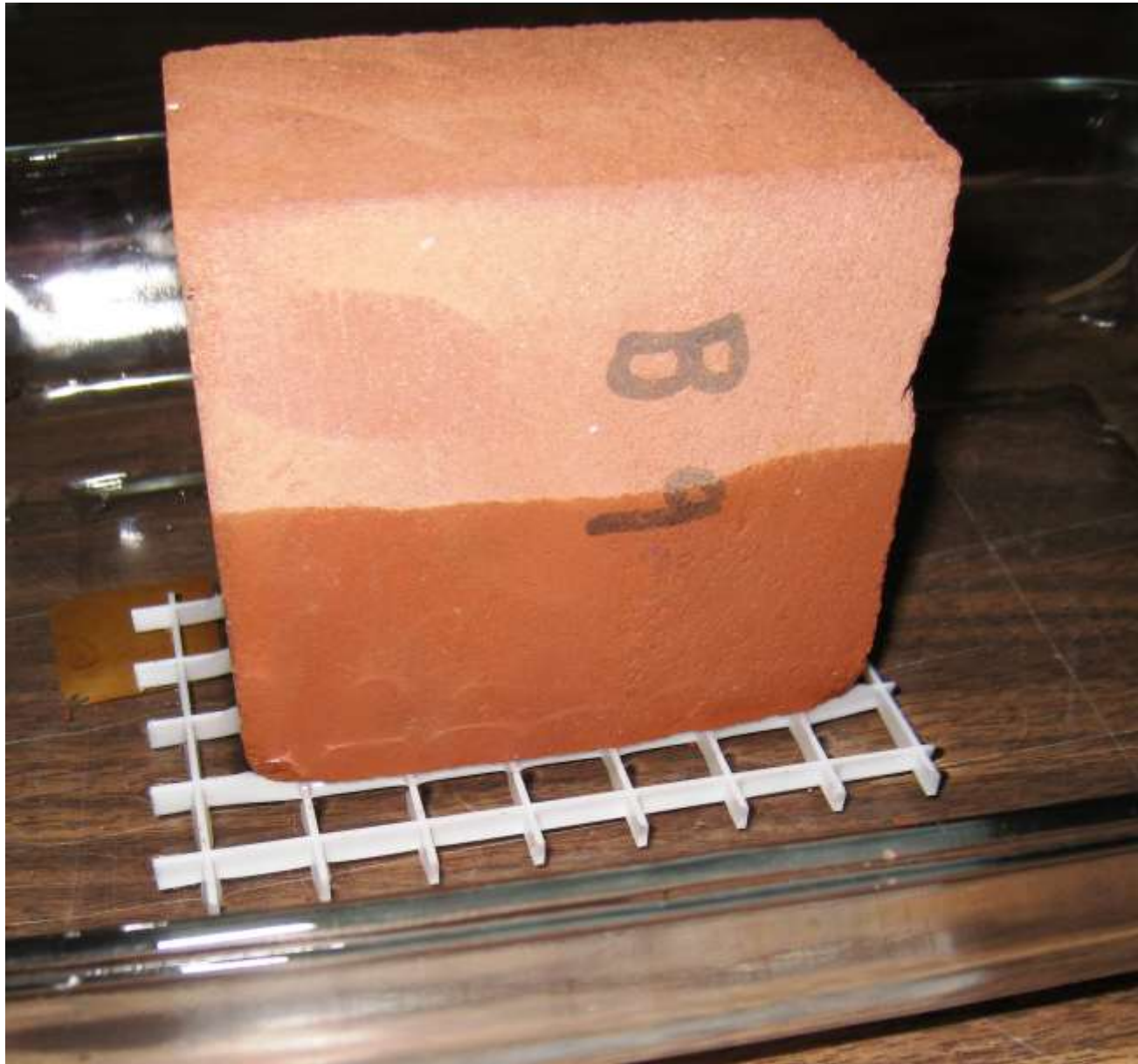
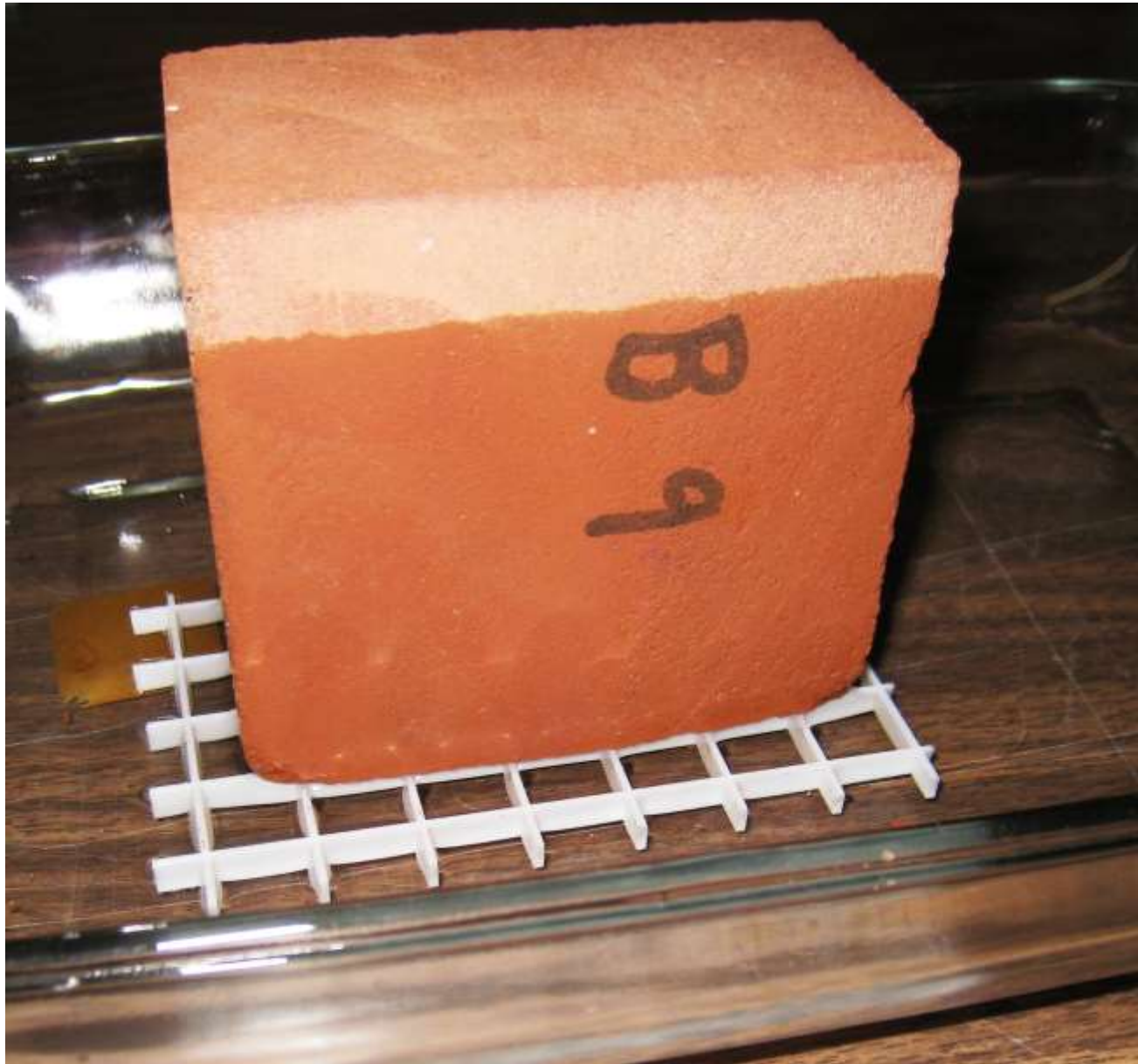


Figure 1b. Brick, sintered clay, porosity 40 per cent.





















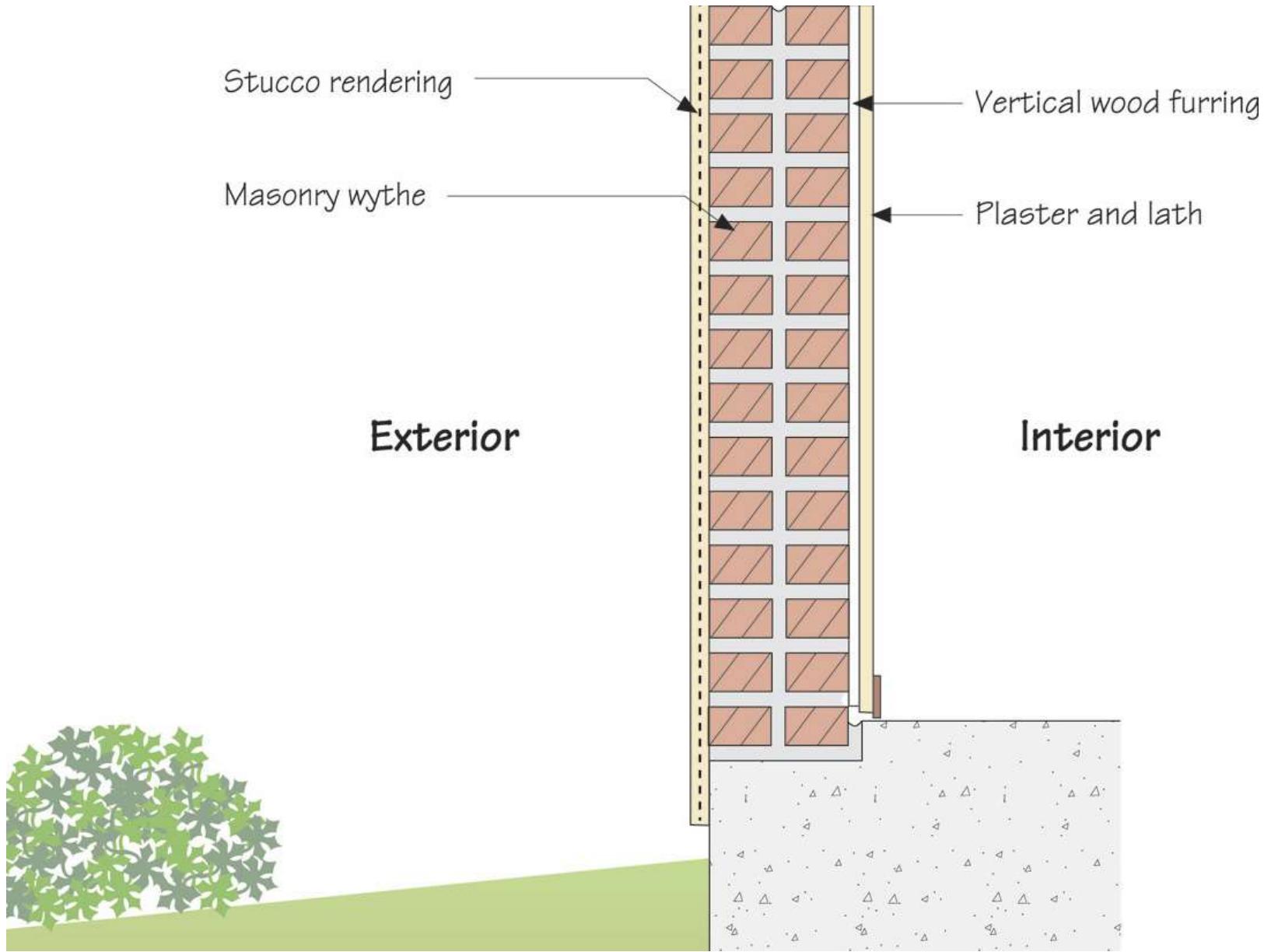












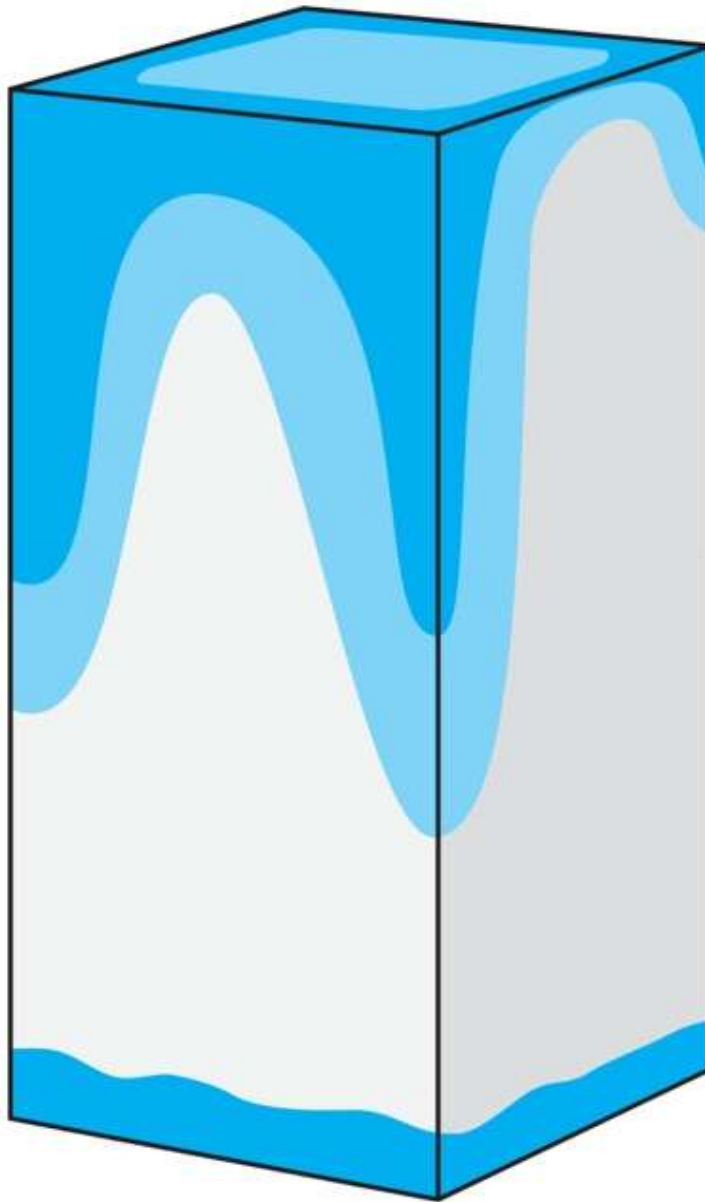


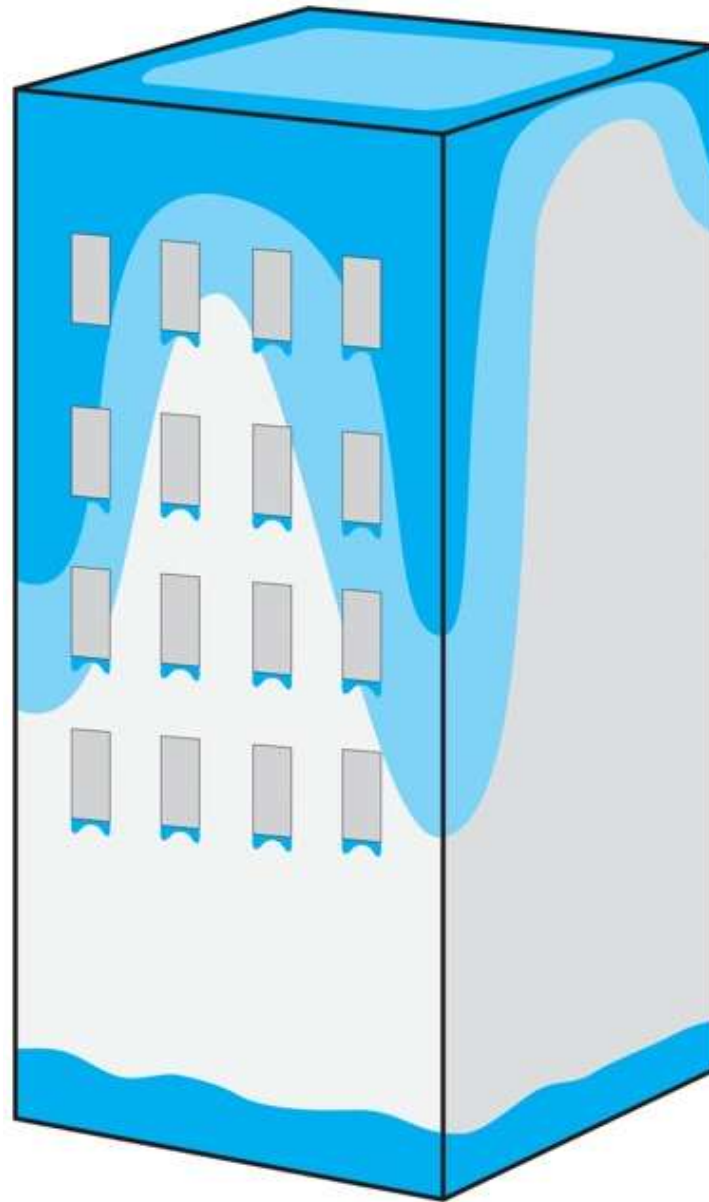














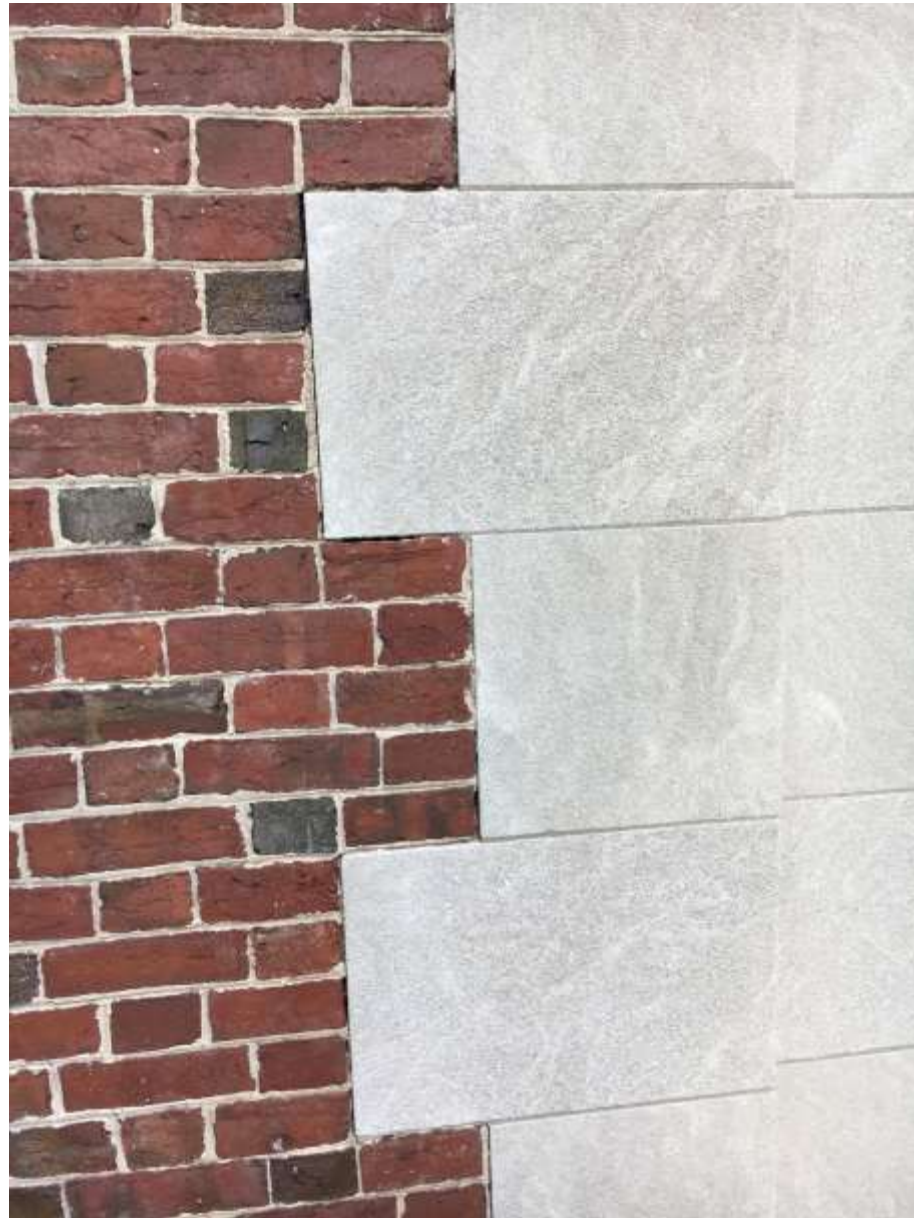












































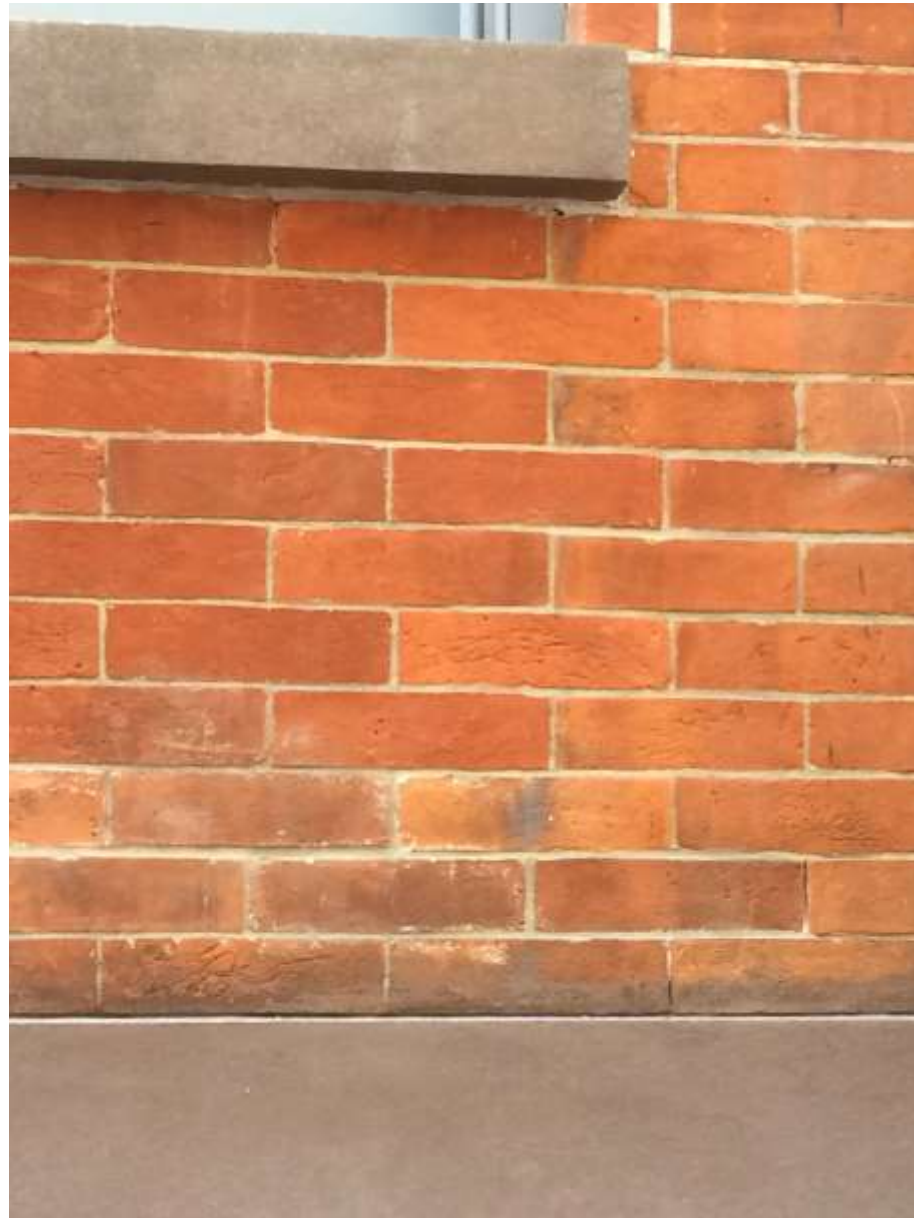
























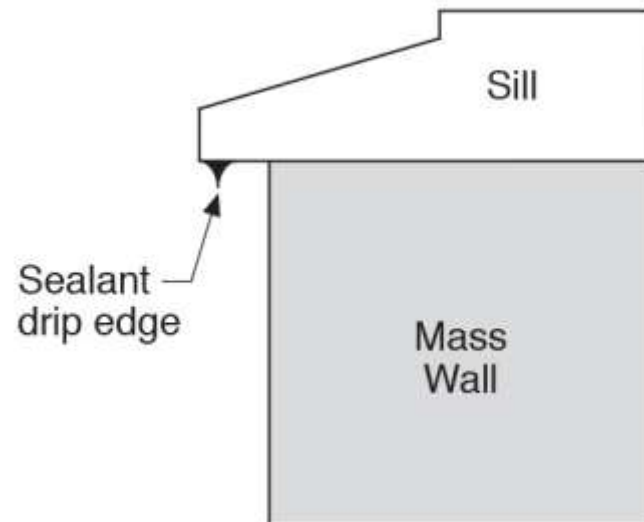
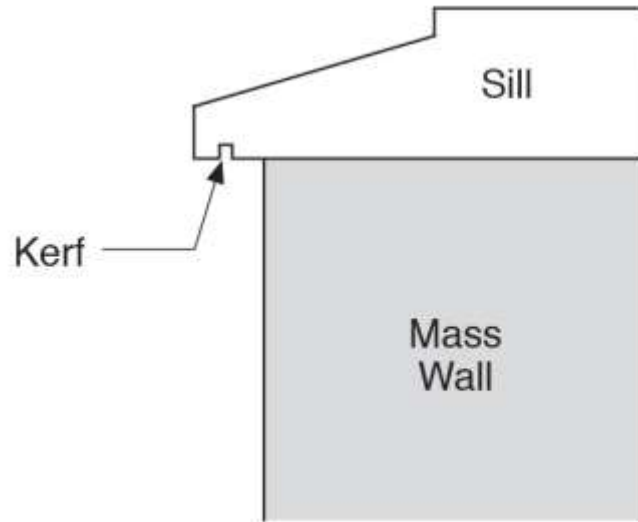




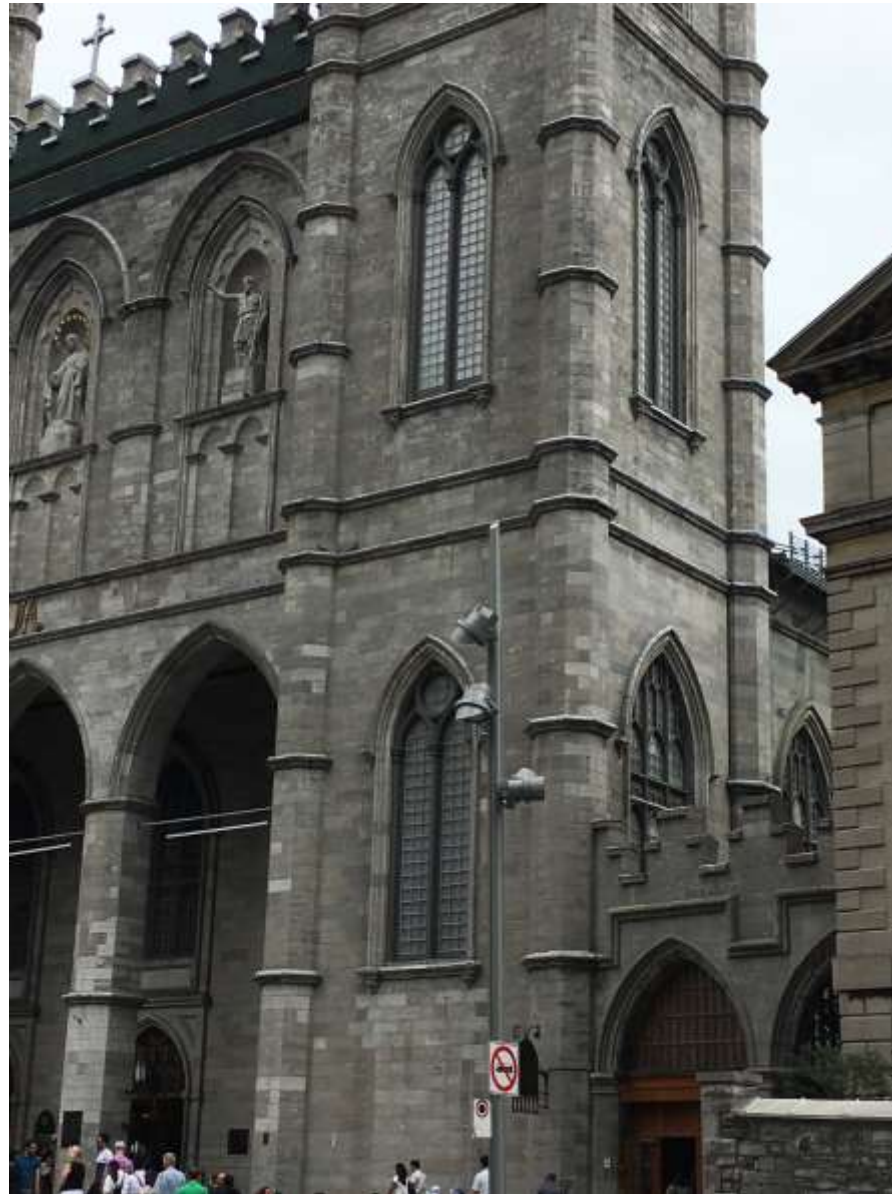
































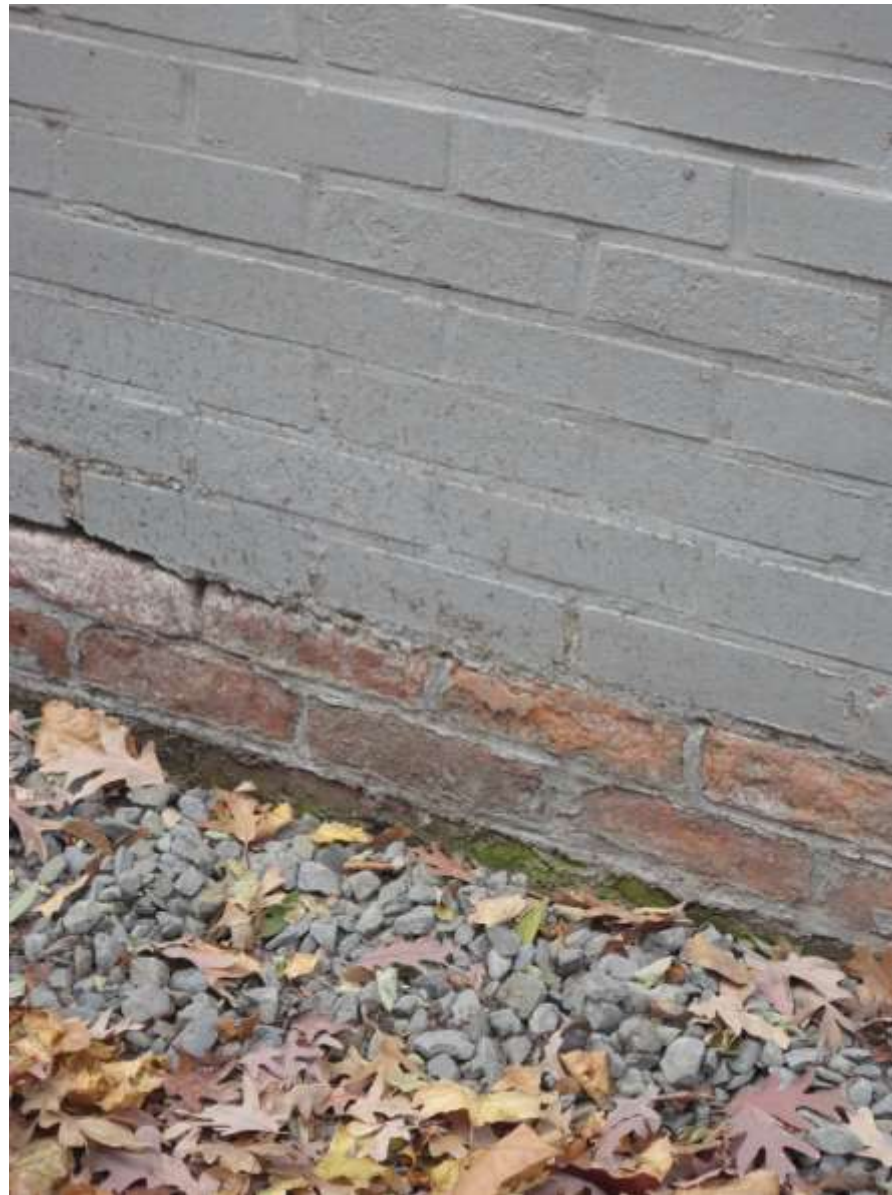


















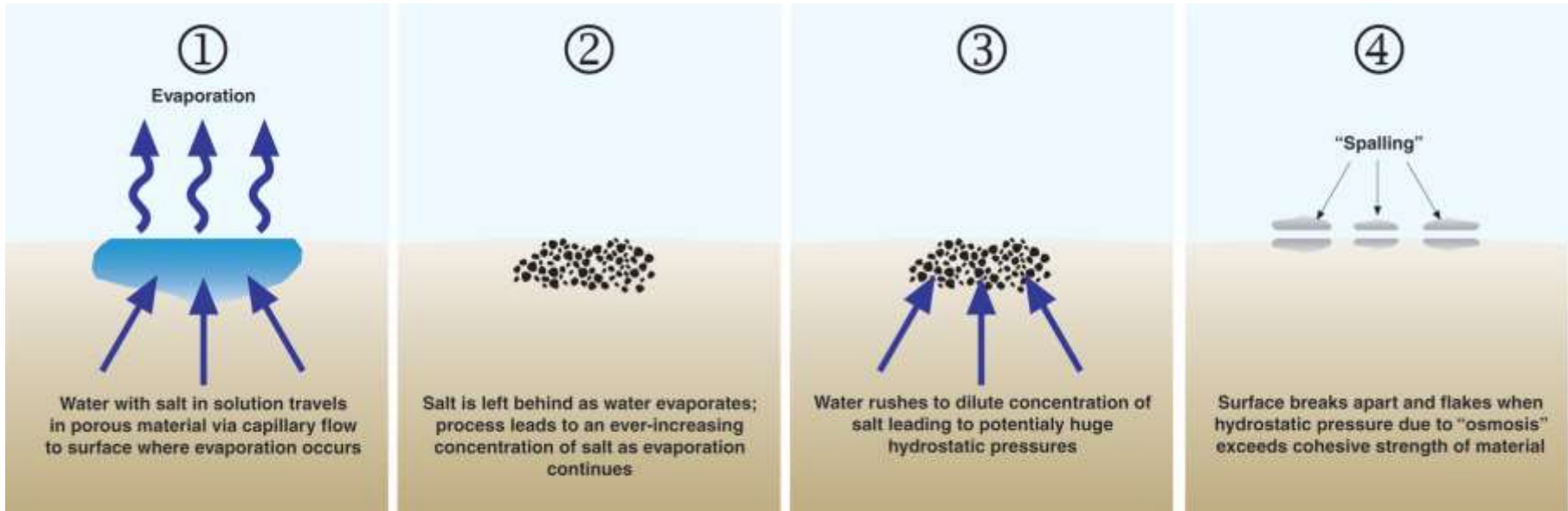










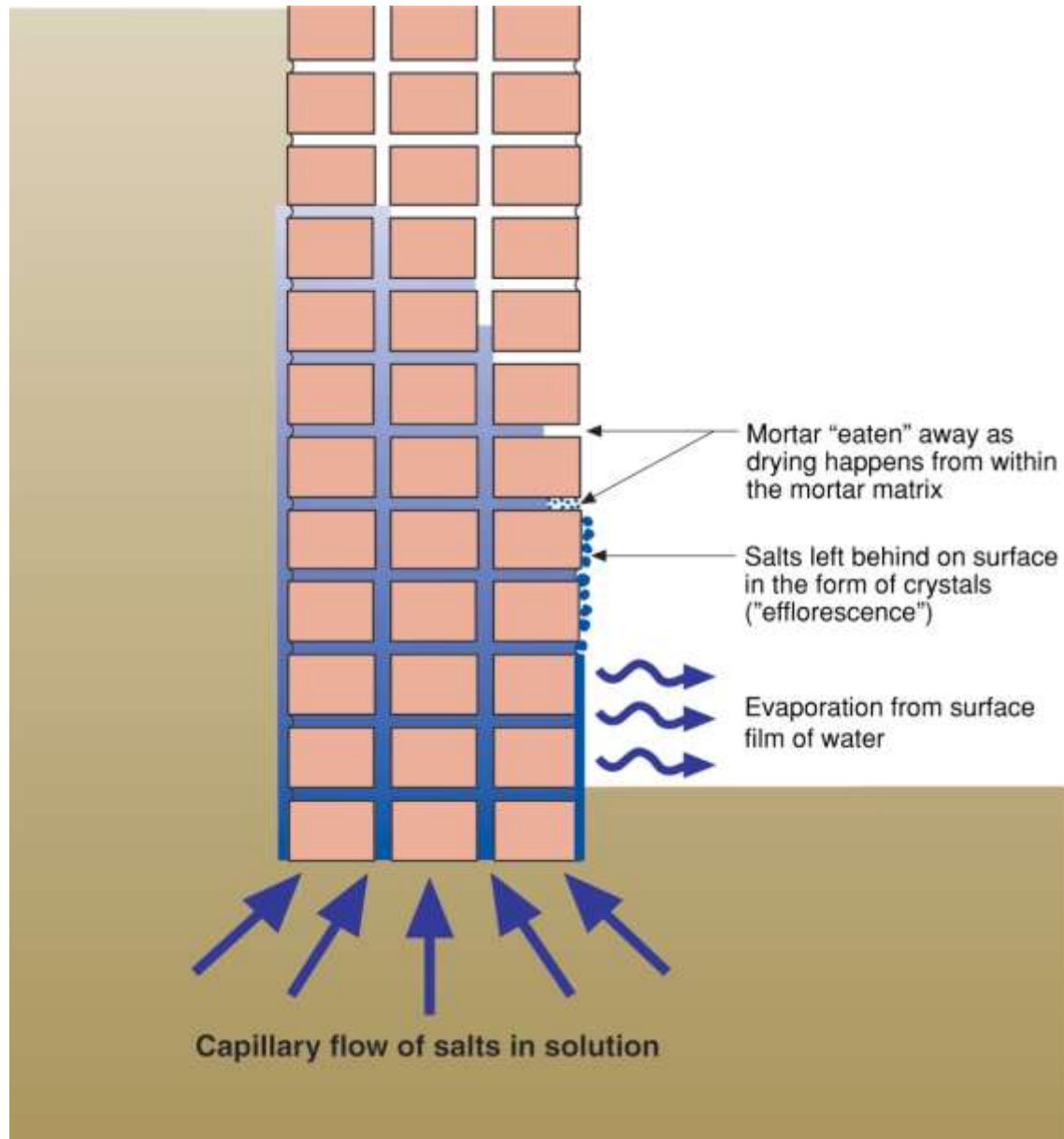


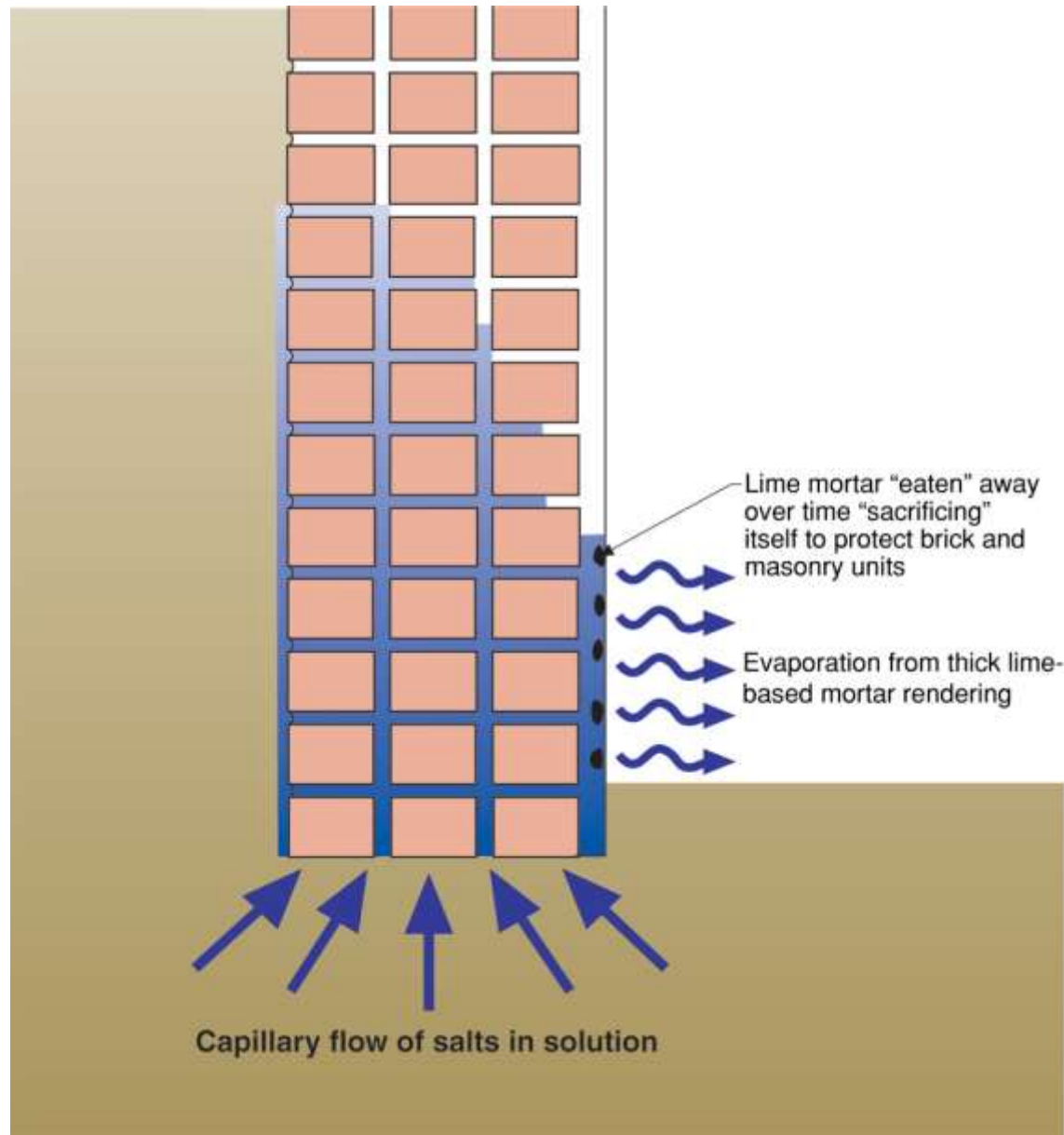
Diffusion + Capillarity + Osmosis = Problem

- Diffusion Vapor Pressure 3 to 5 psi
- Capillary Pressure 300 to 500 psi
- Osmosis Pressure 3,000 to 5,000 psi













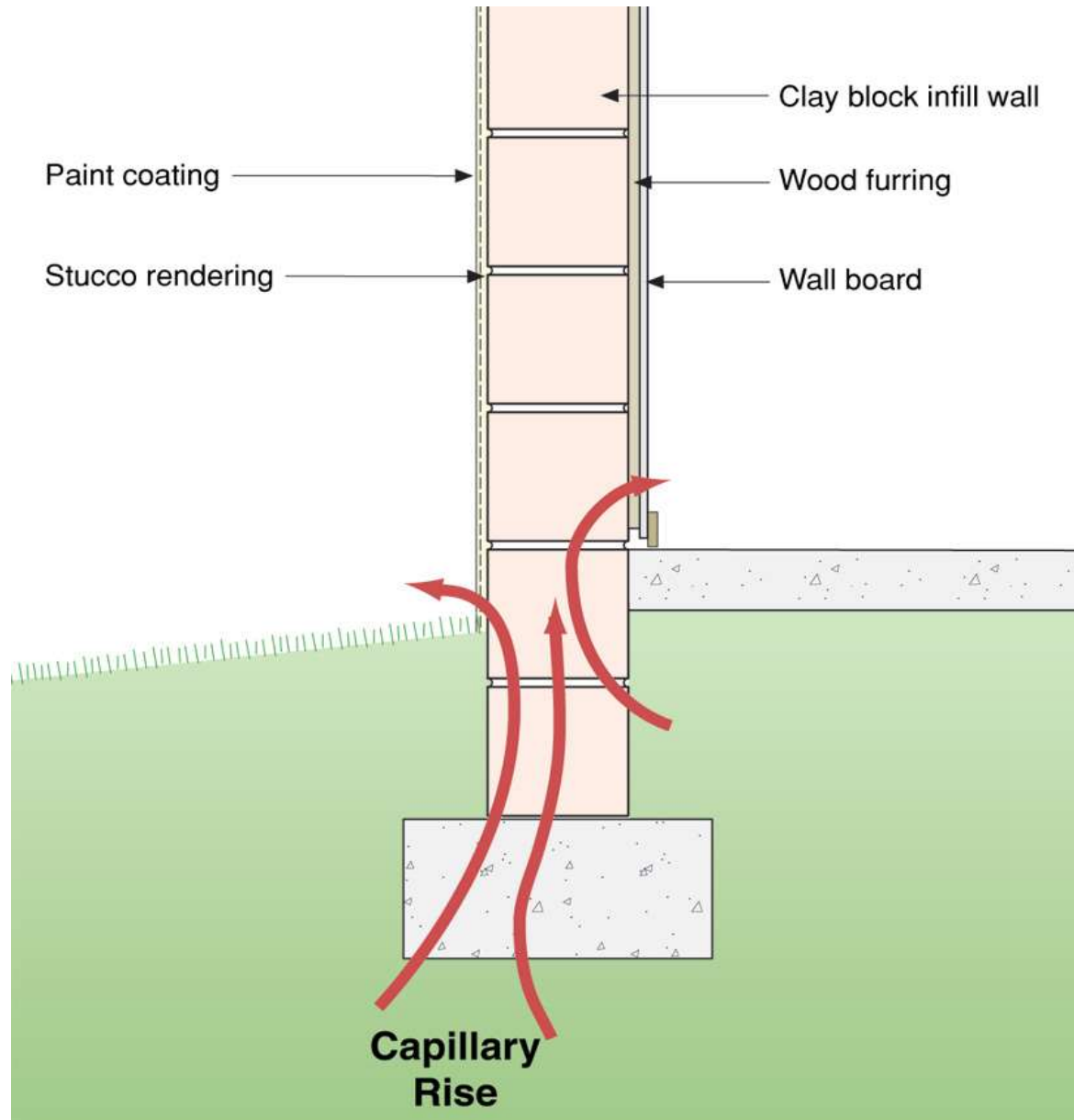


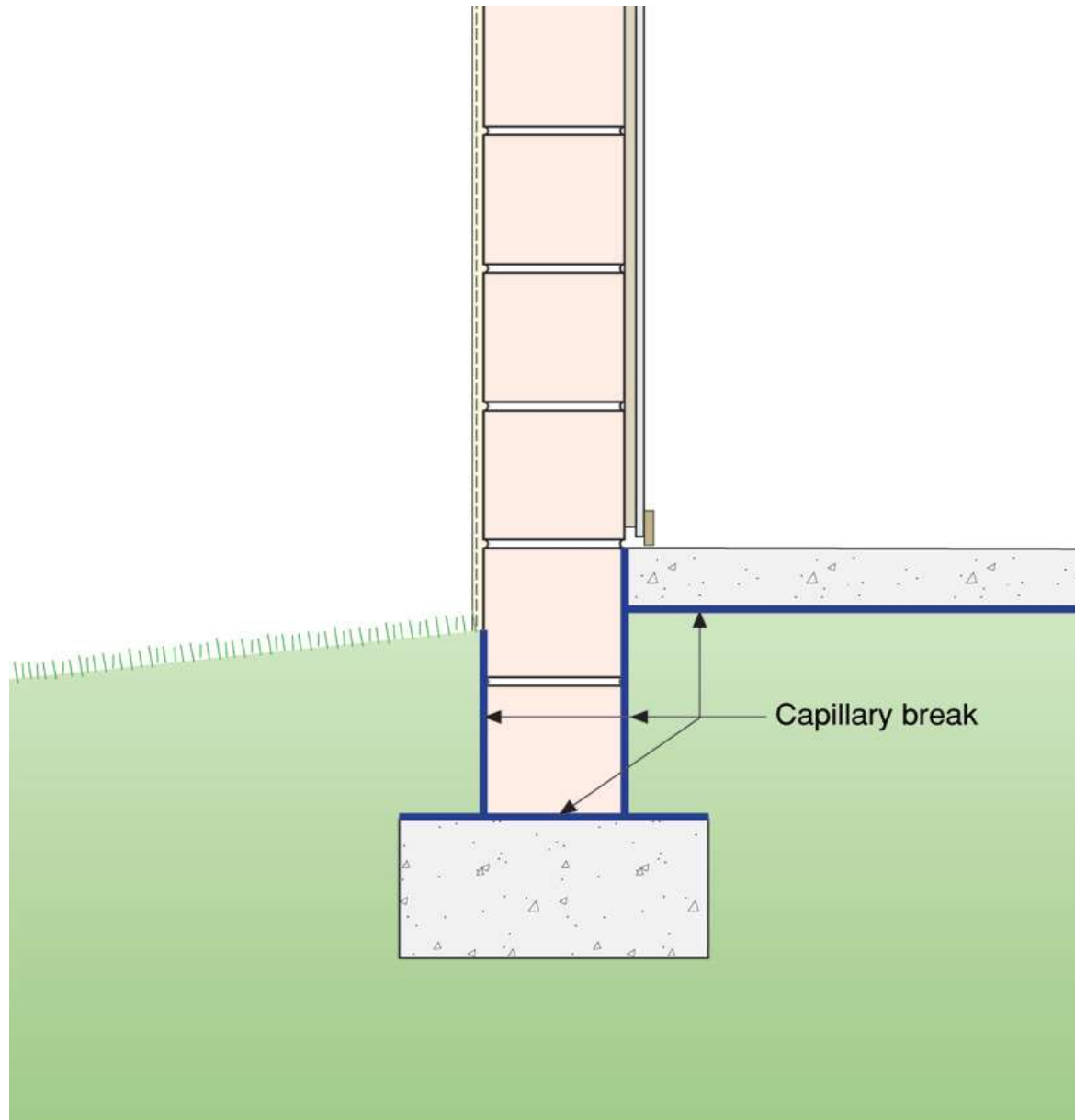




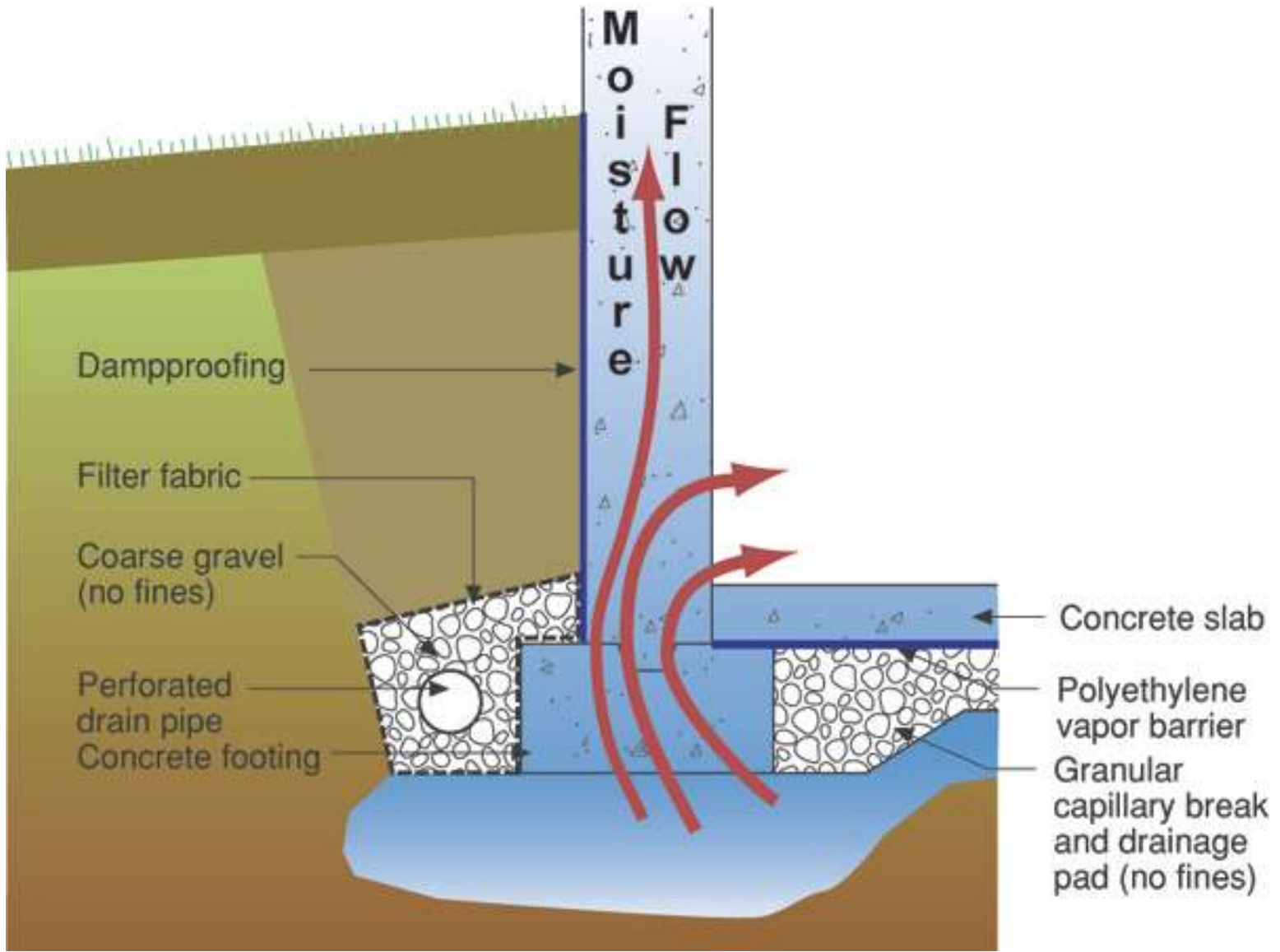


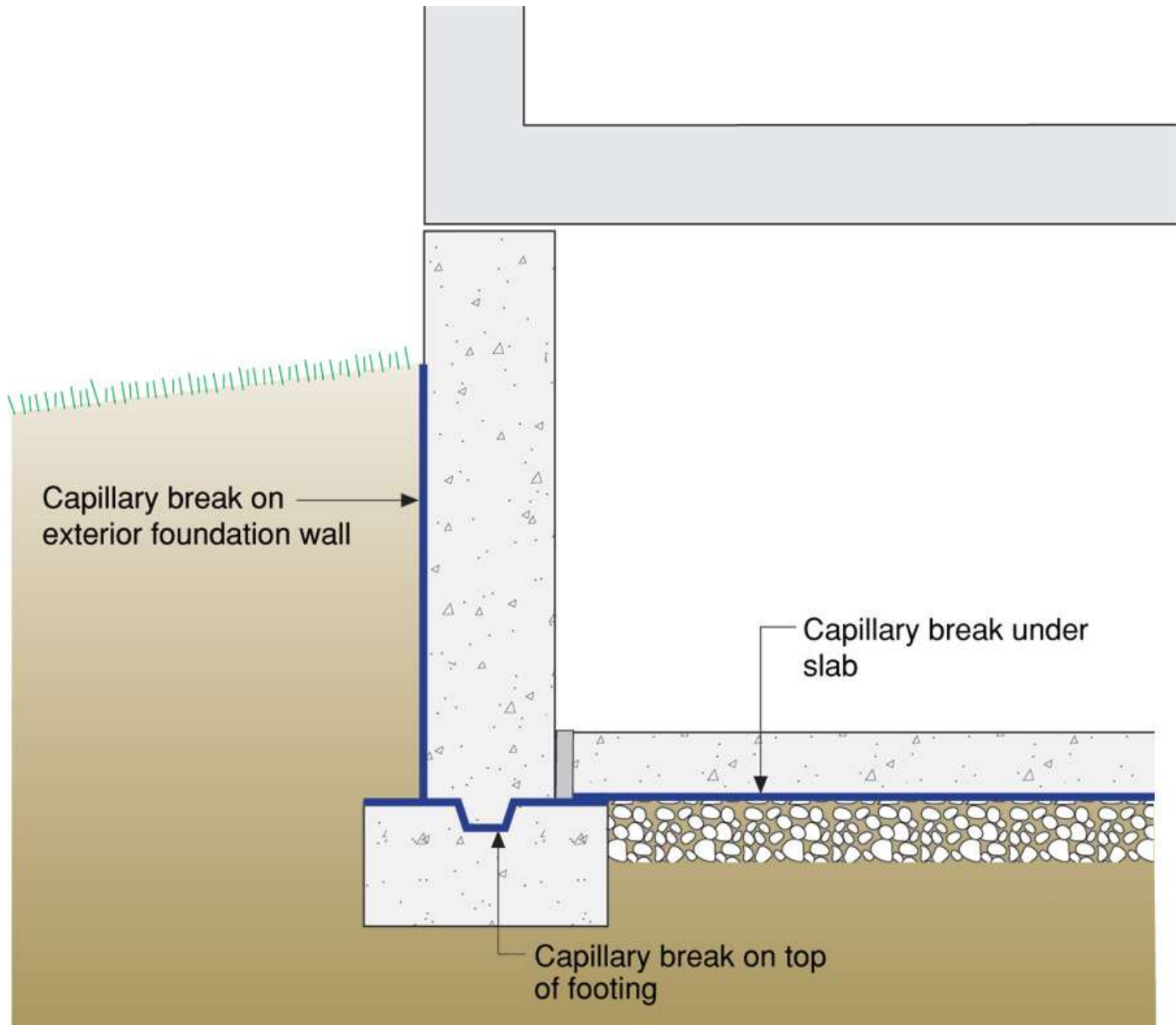












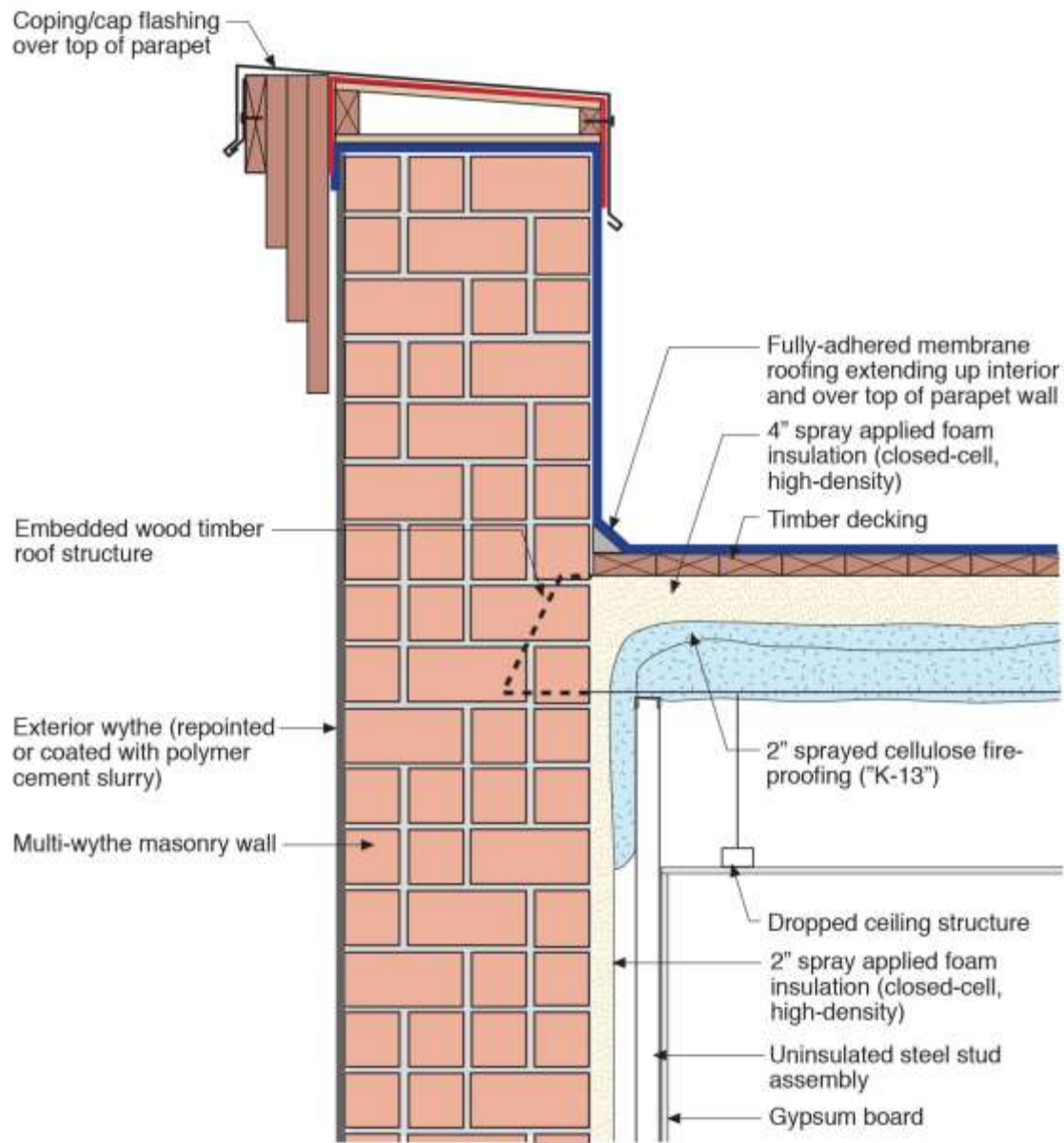






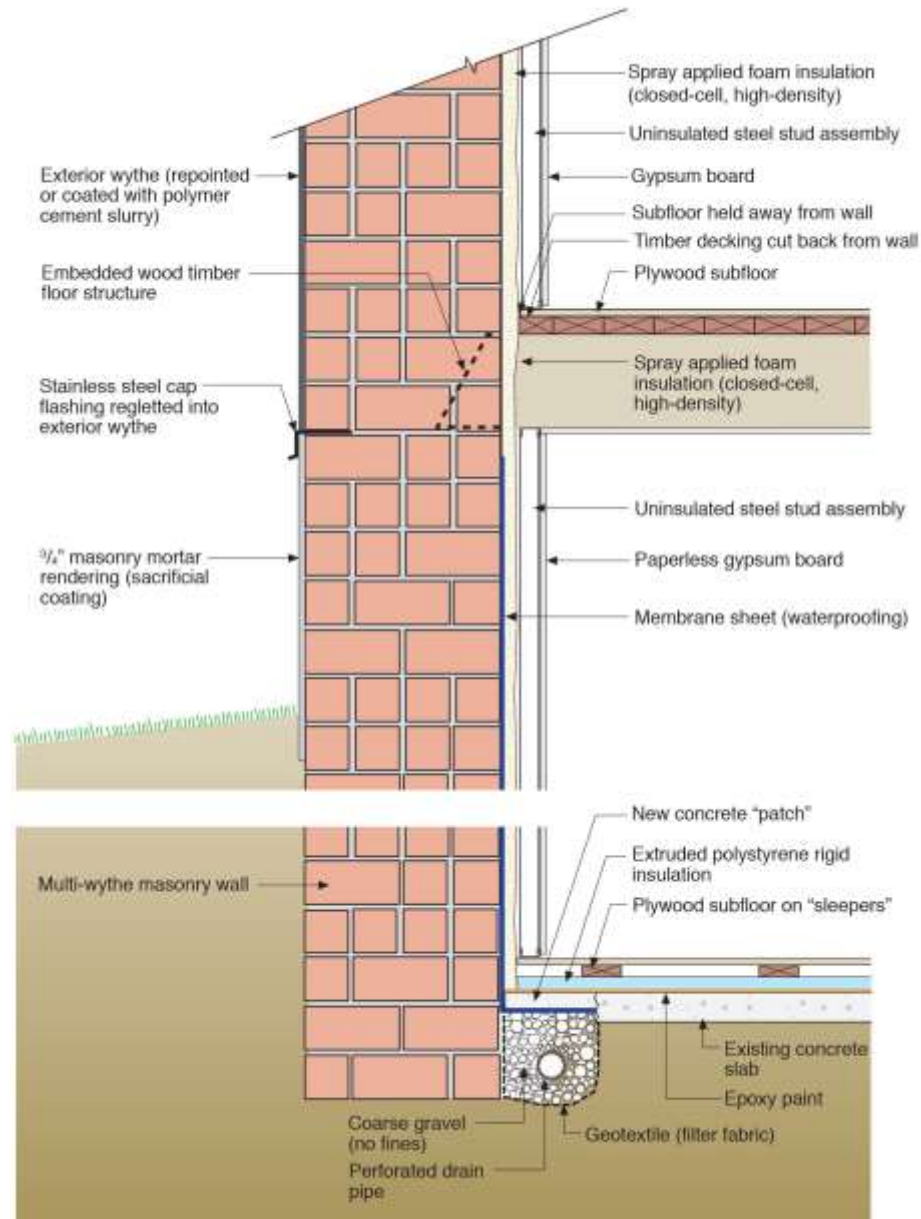


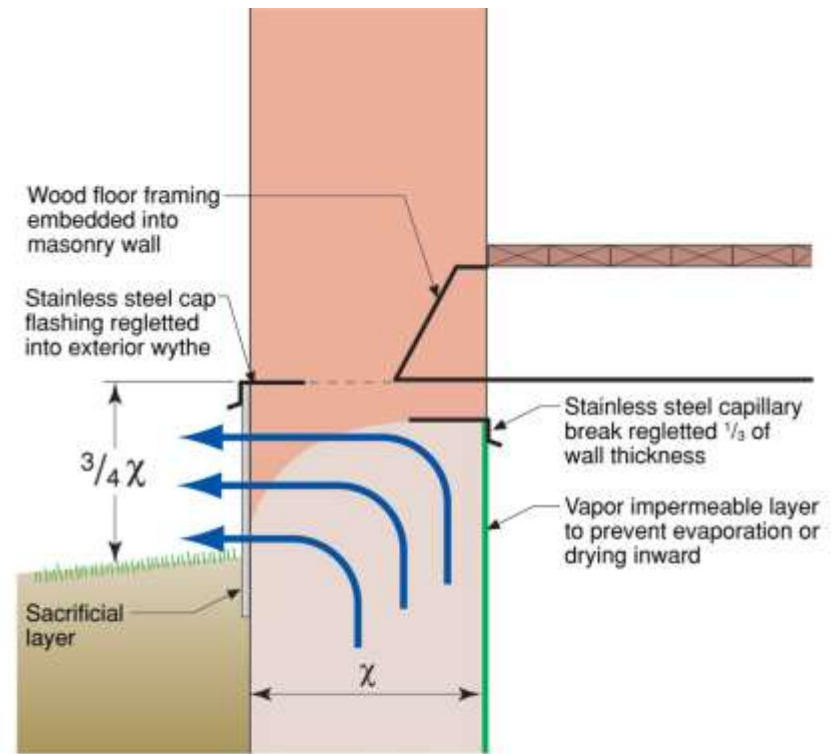
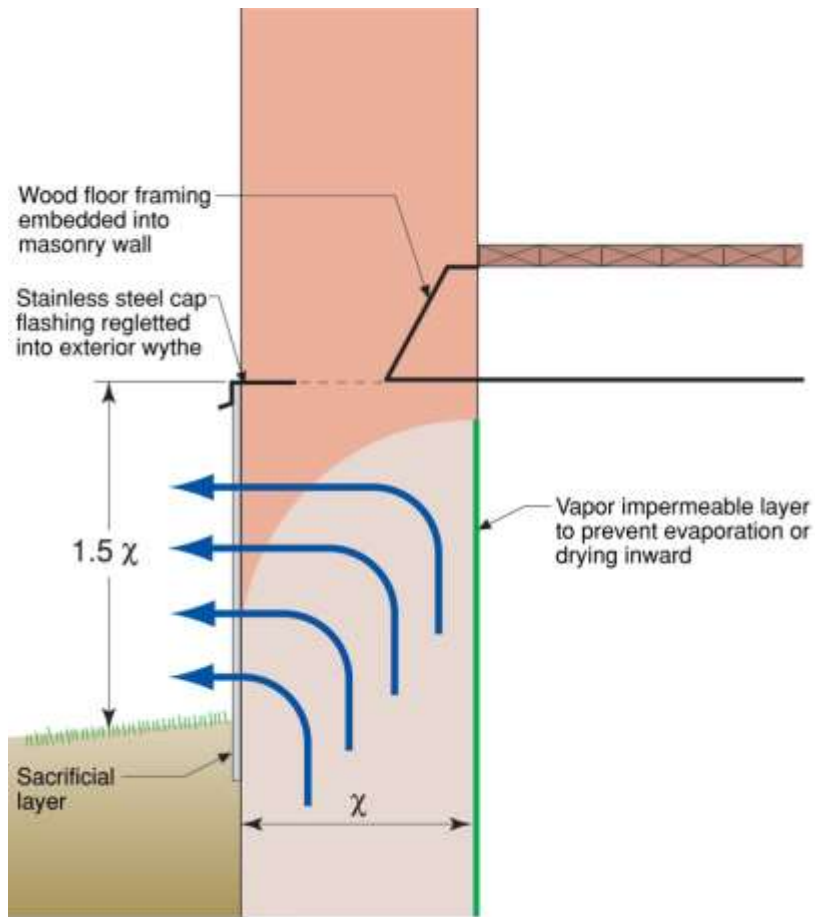


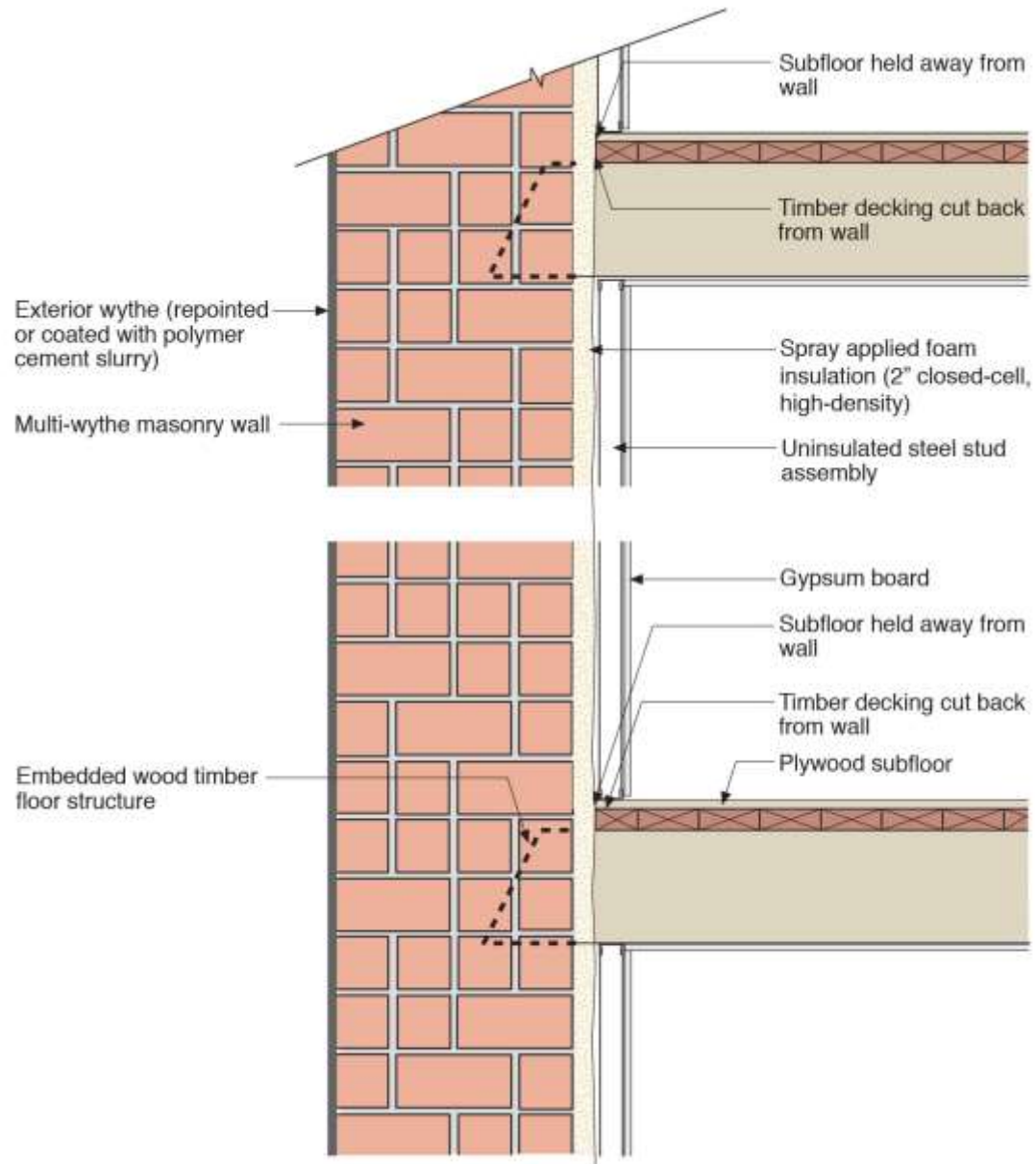




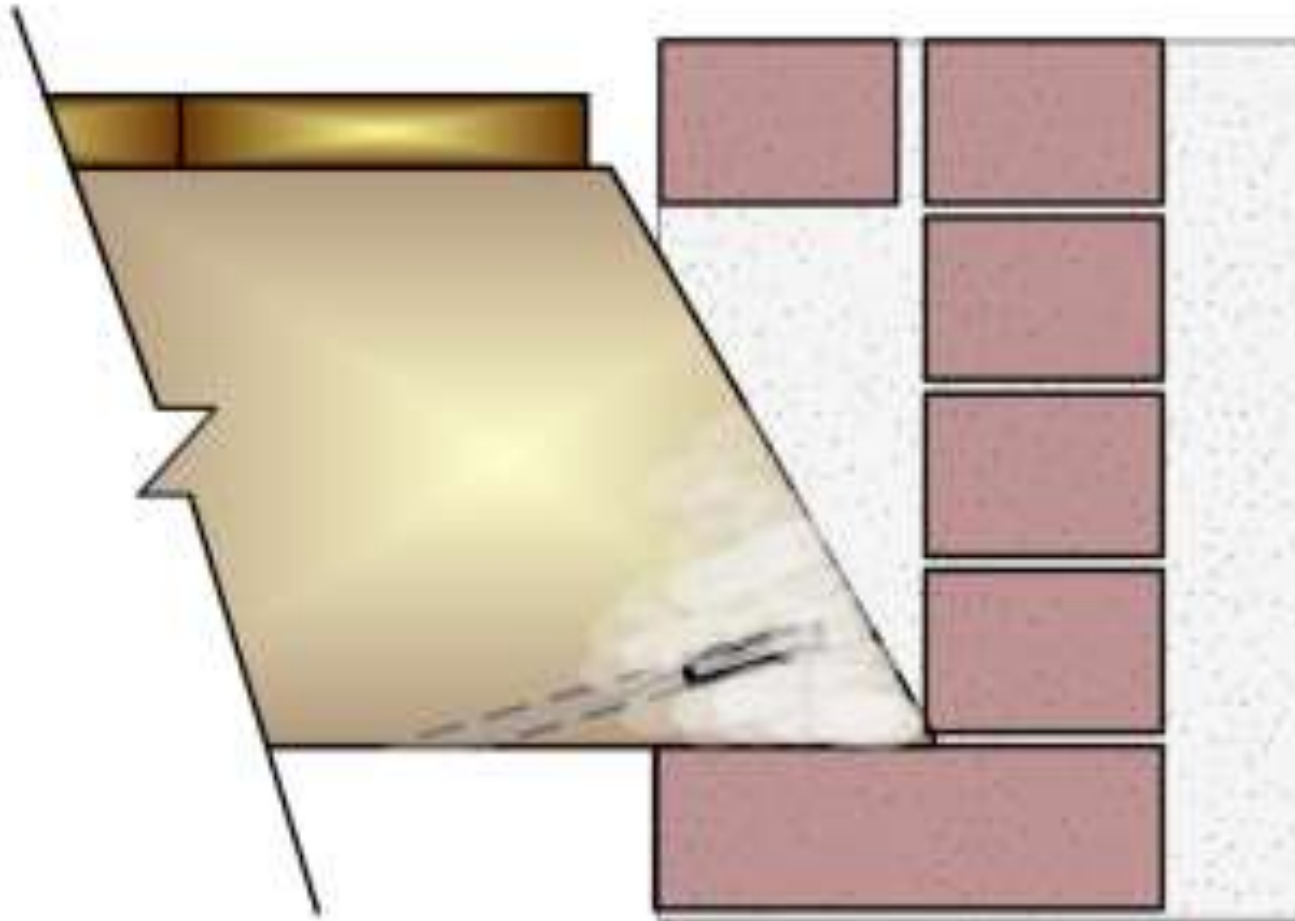


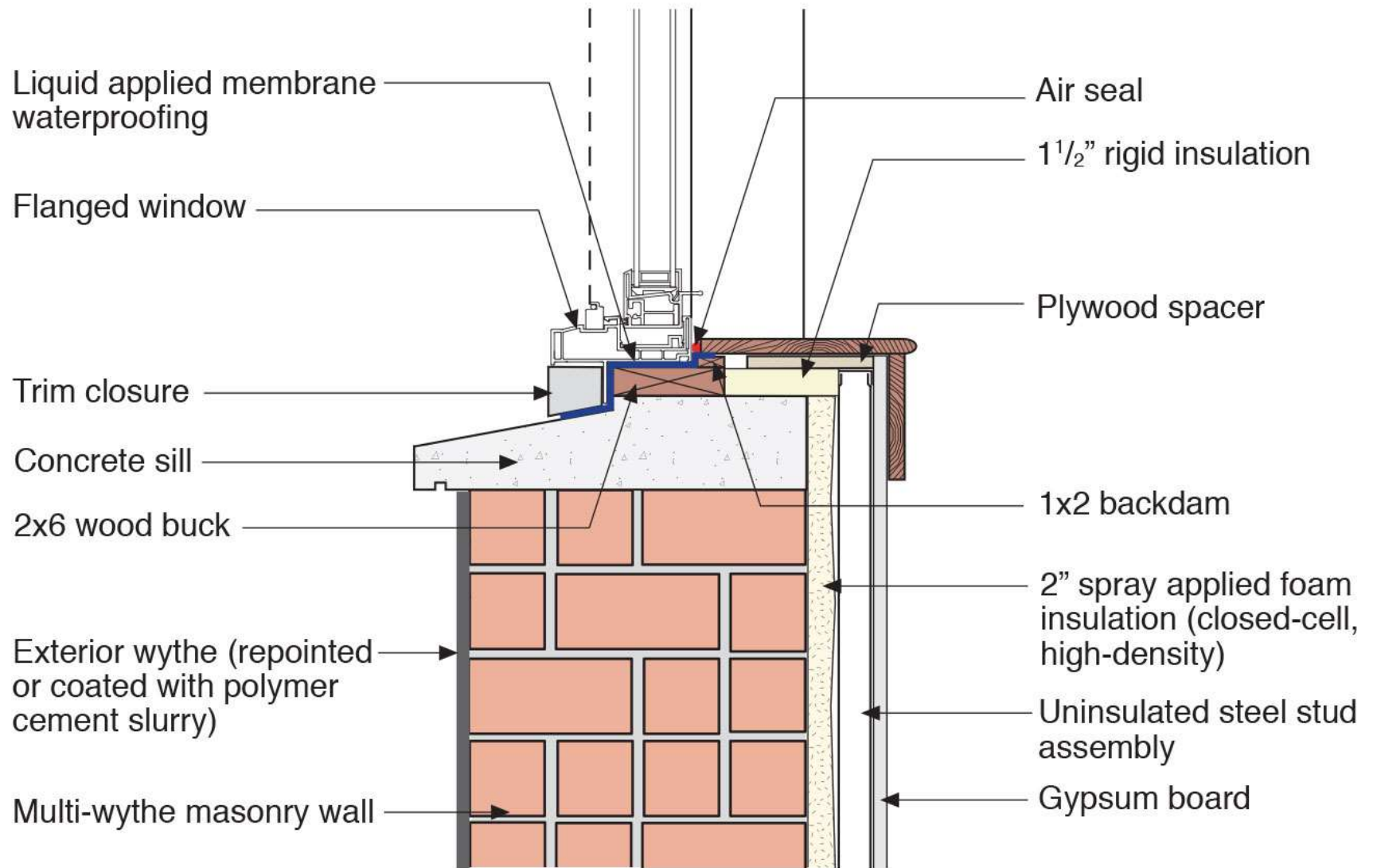


























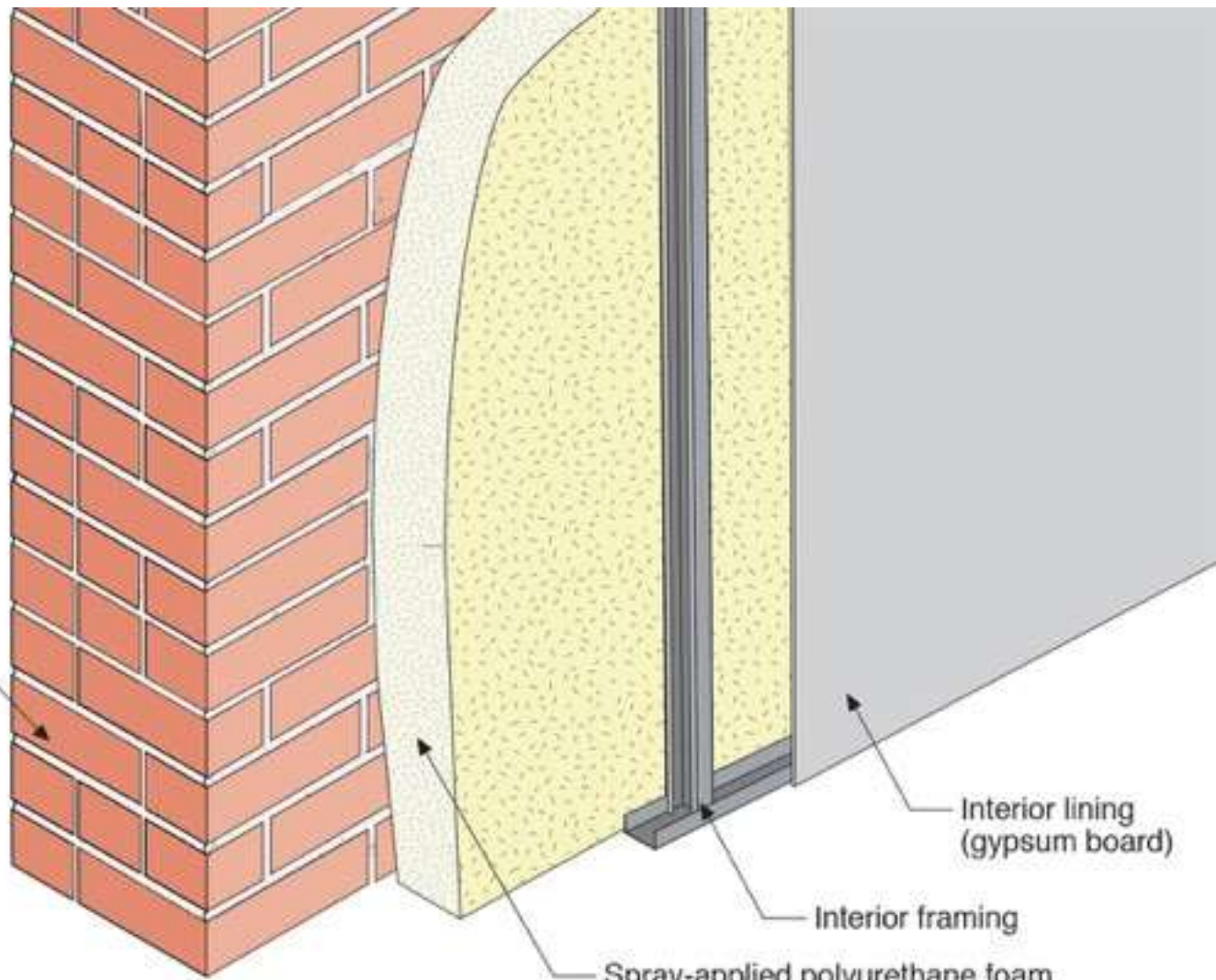








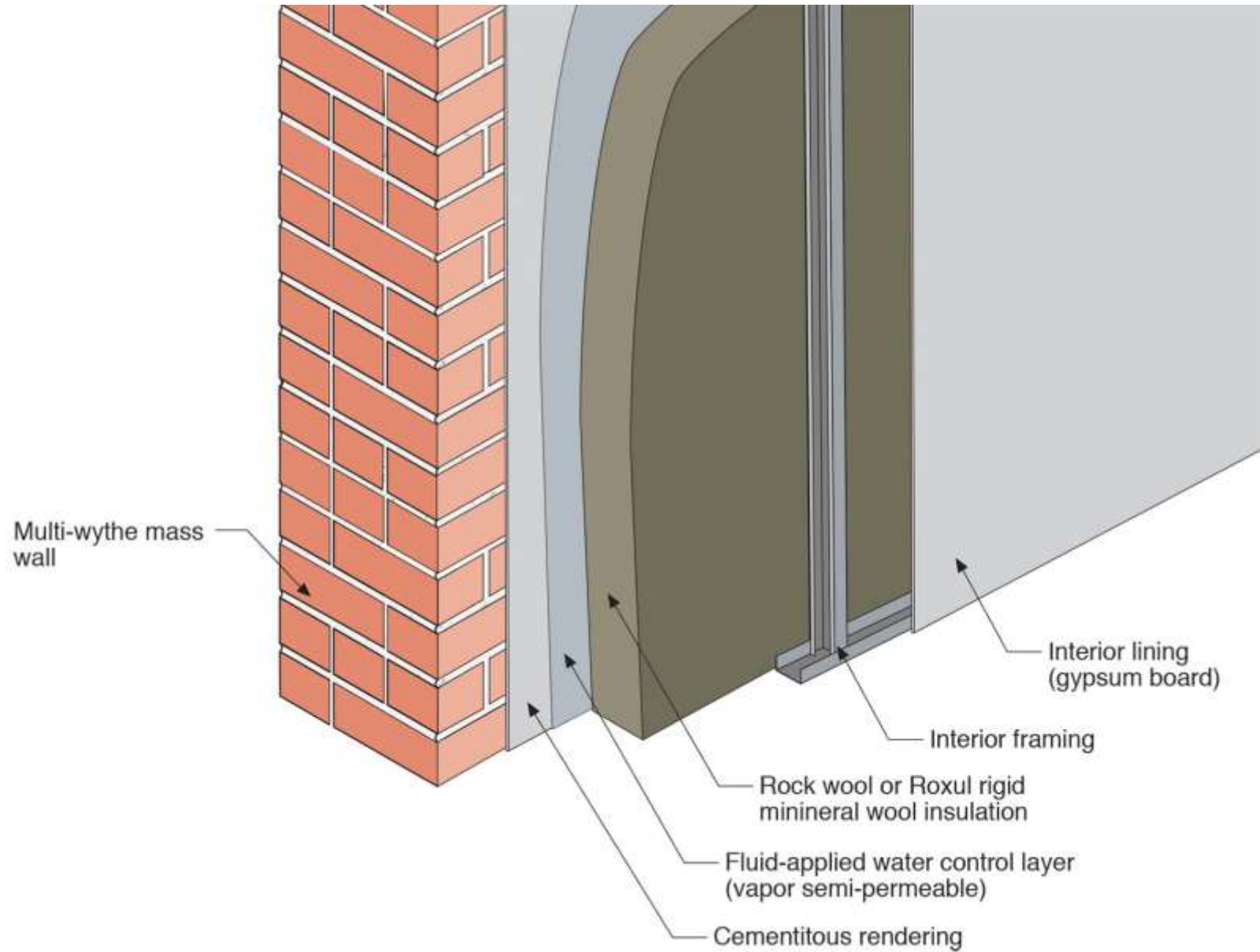
Multi-wythe mass wall

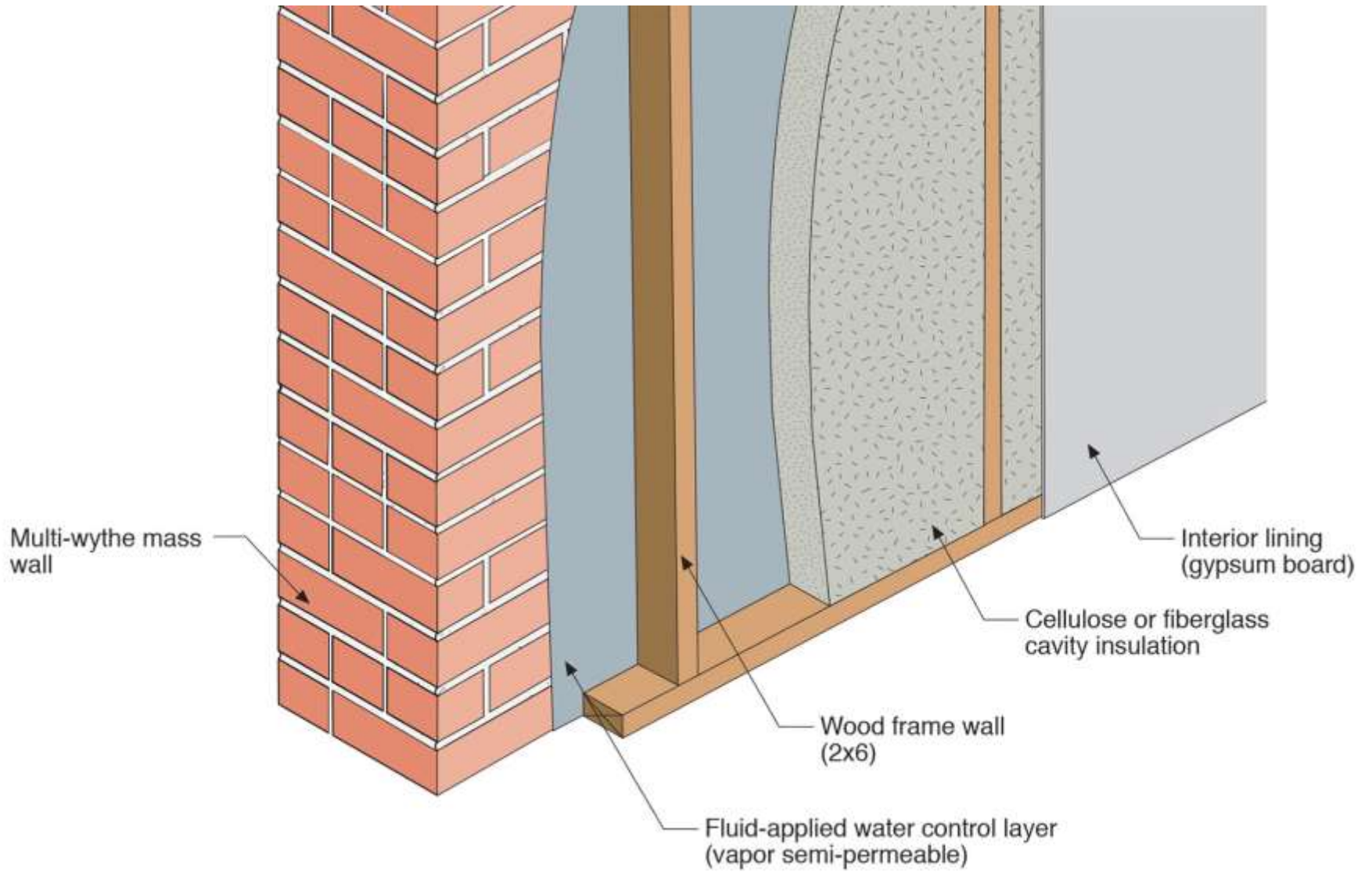


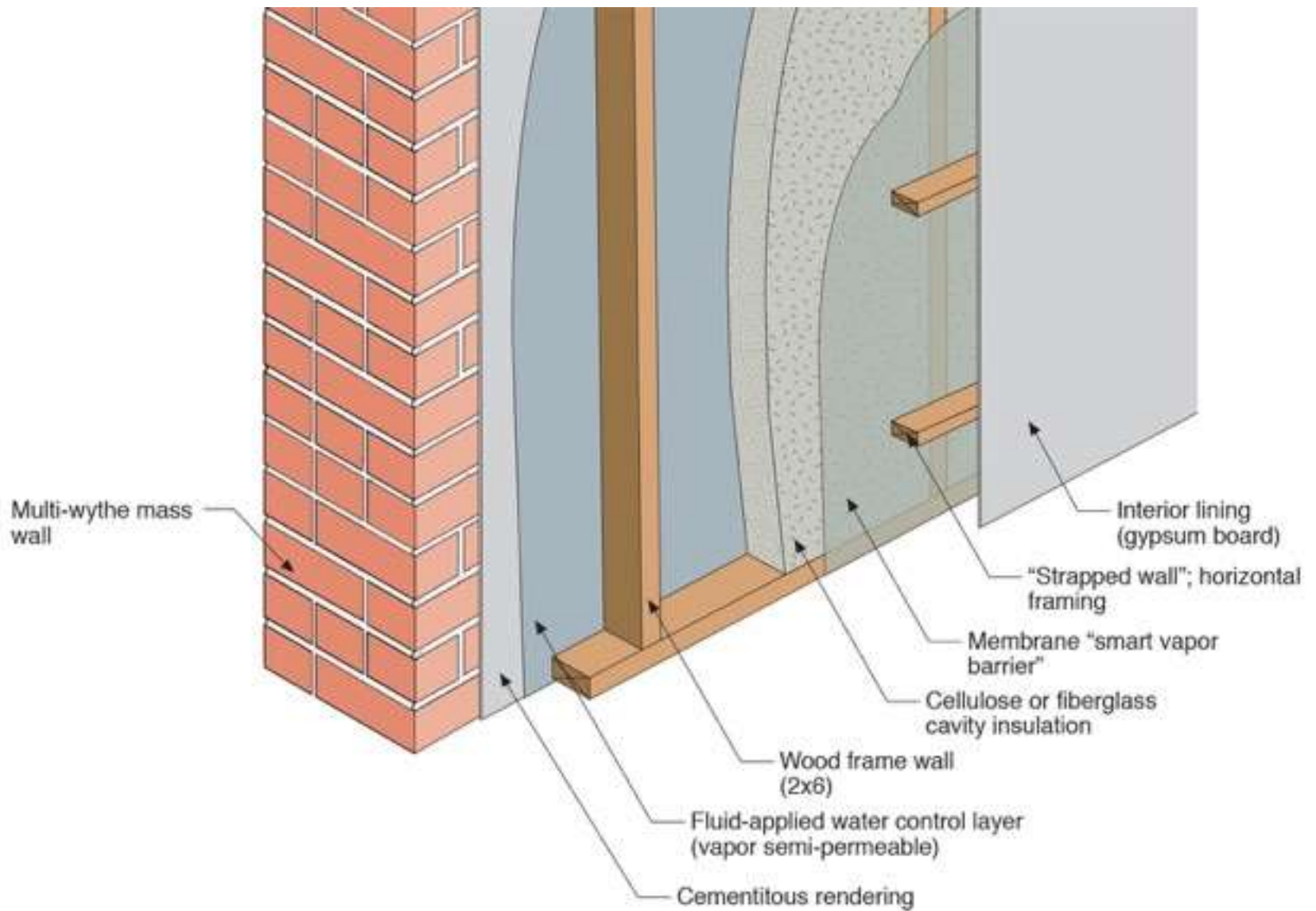
Interior lining
(gypsum board)

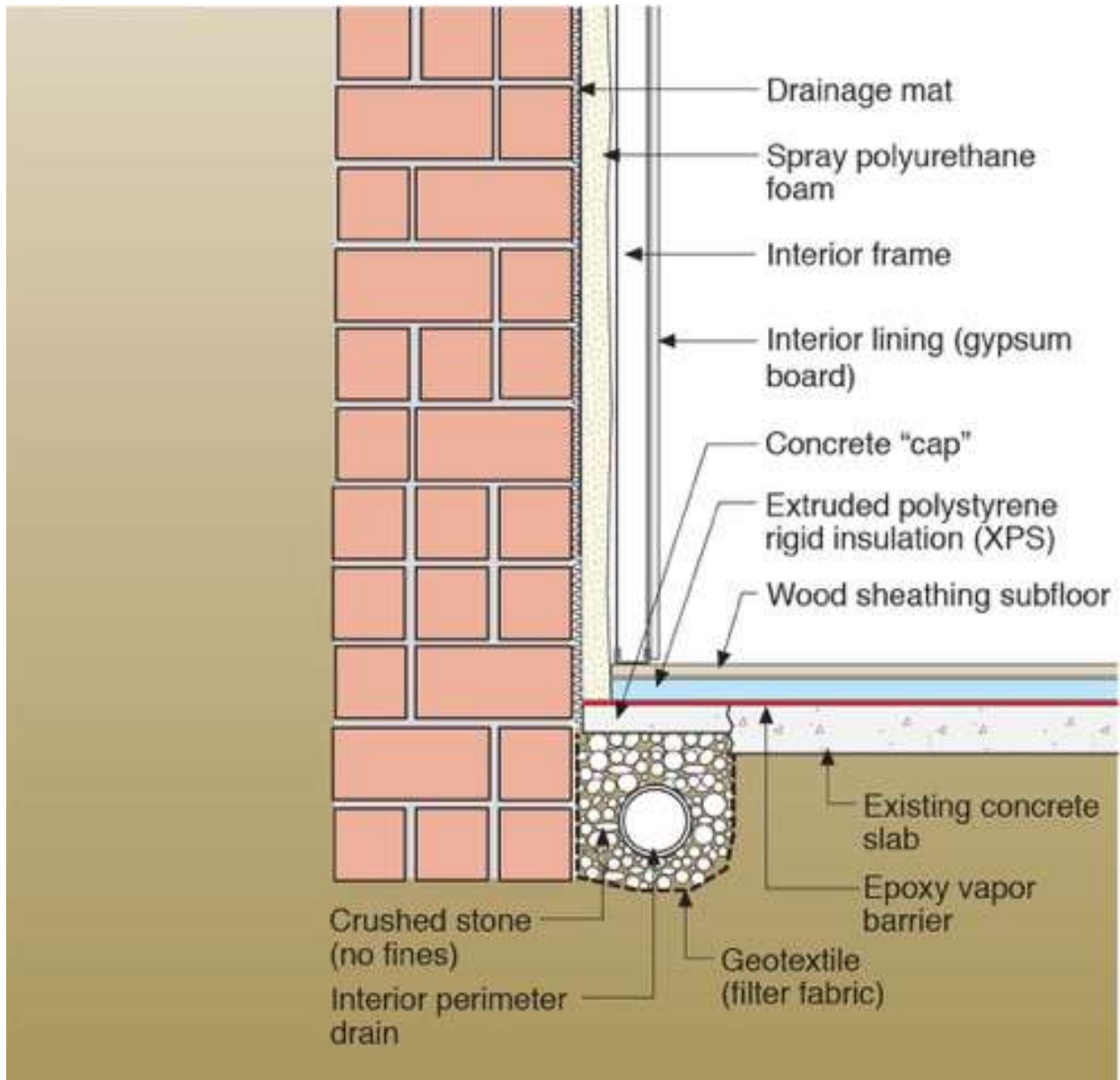
Interior framing

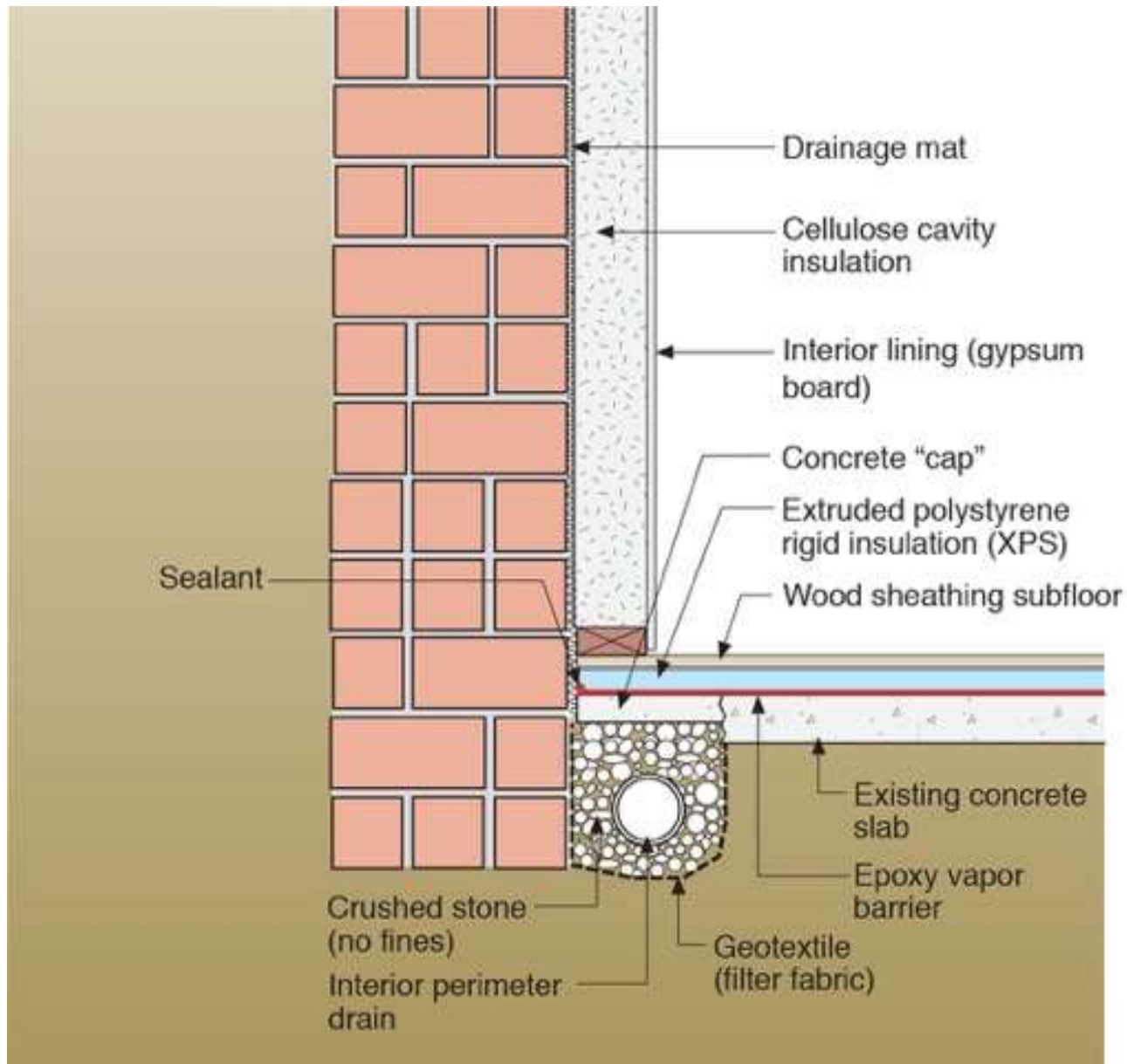
Spray-applied polyurethane foam
(2 lb/ft³ density)

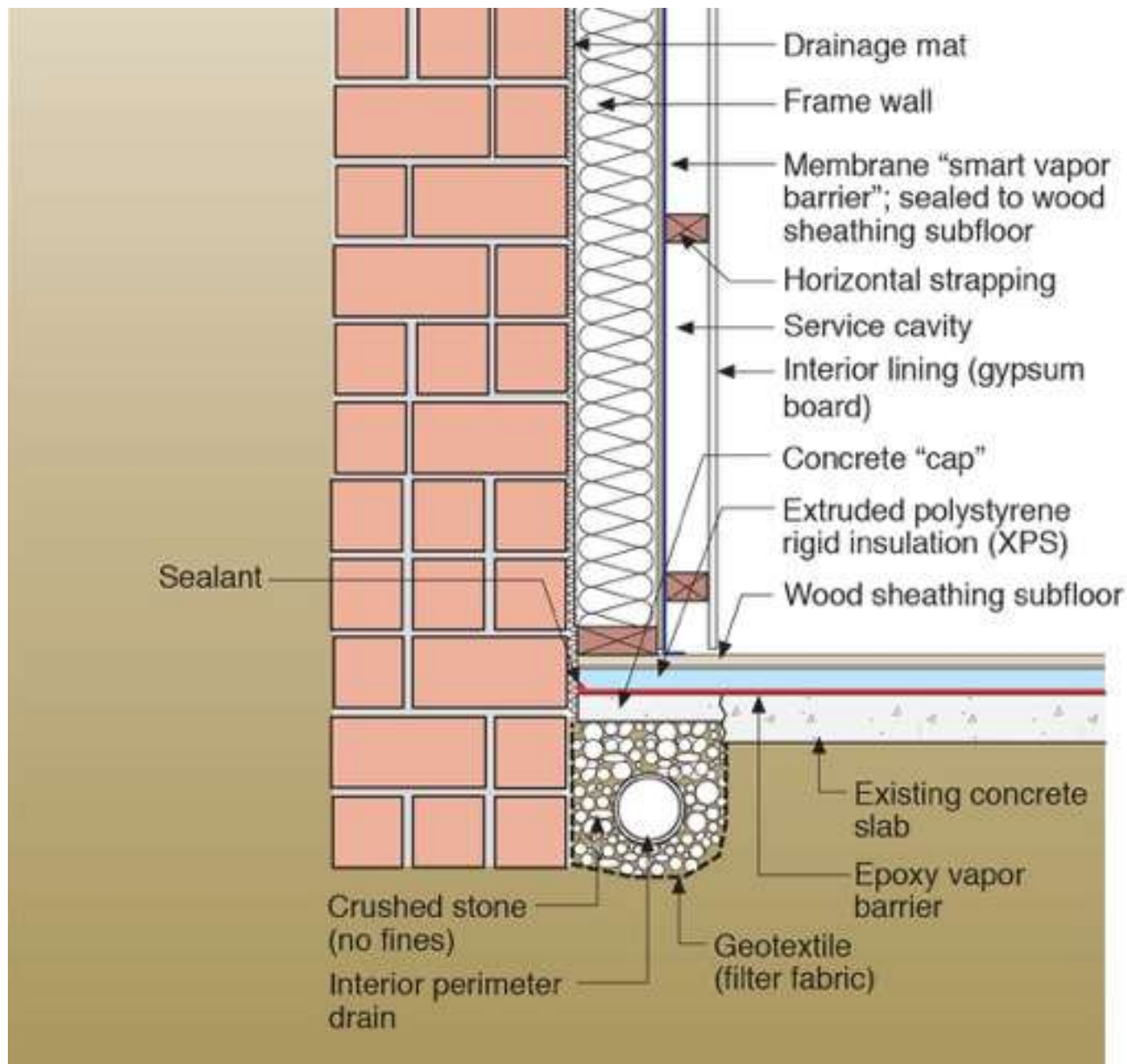










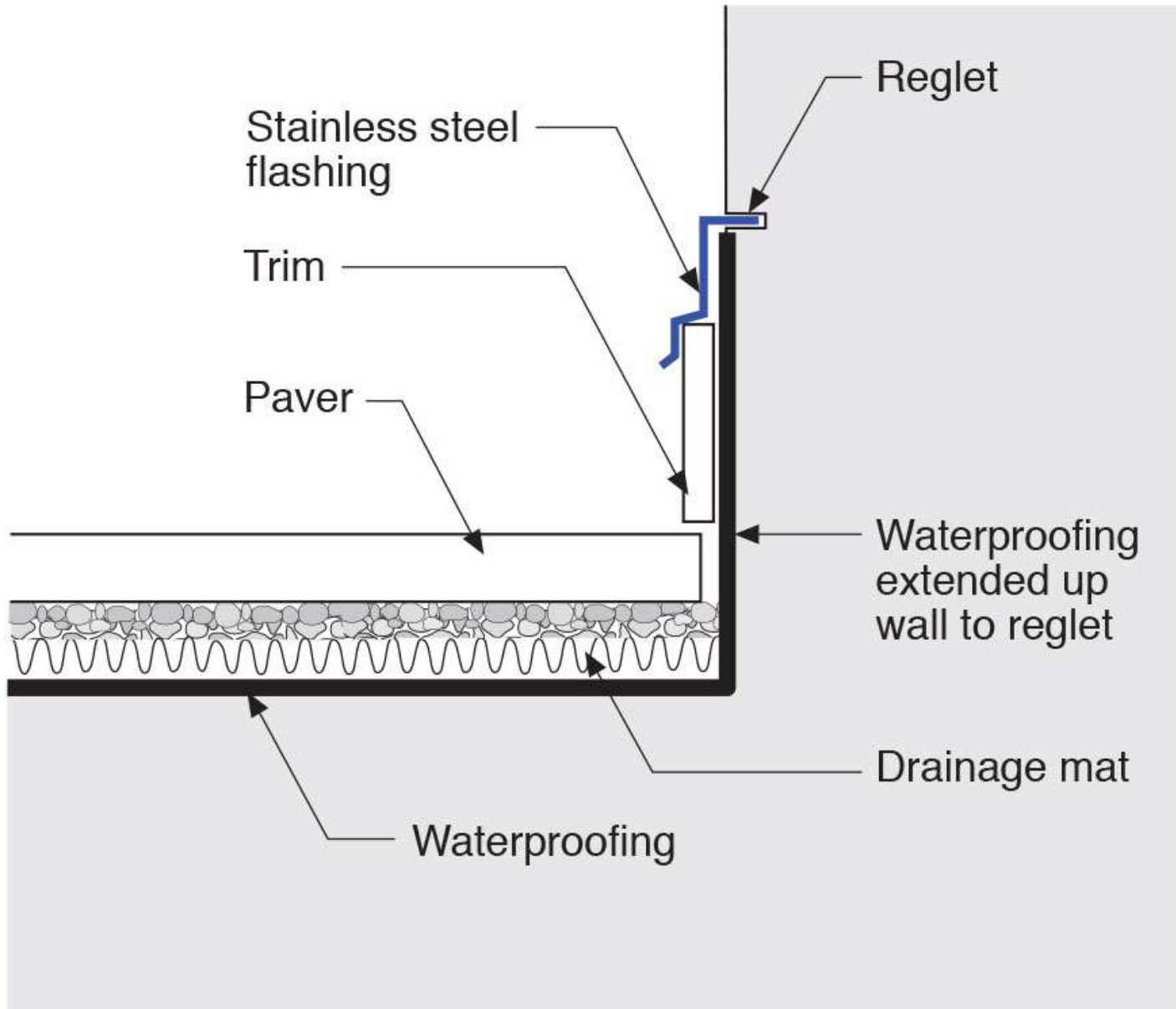






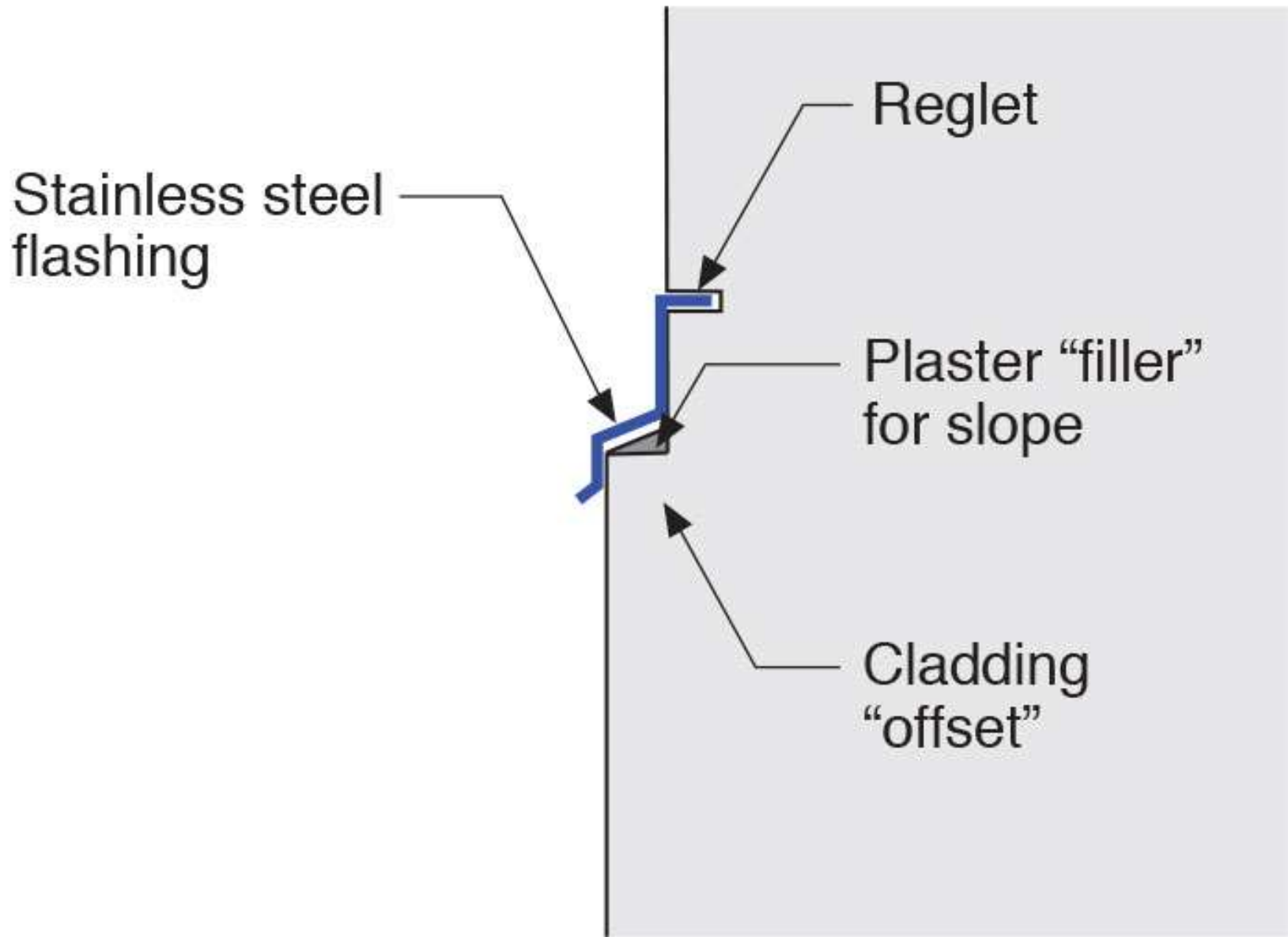




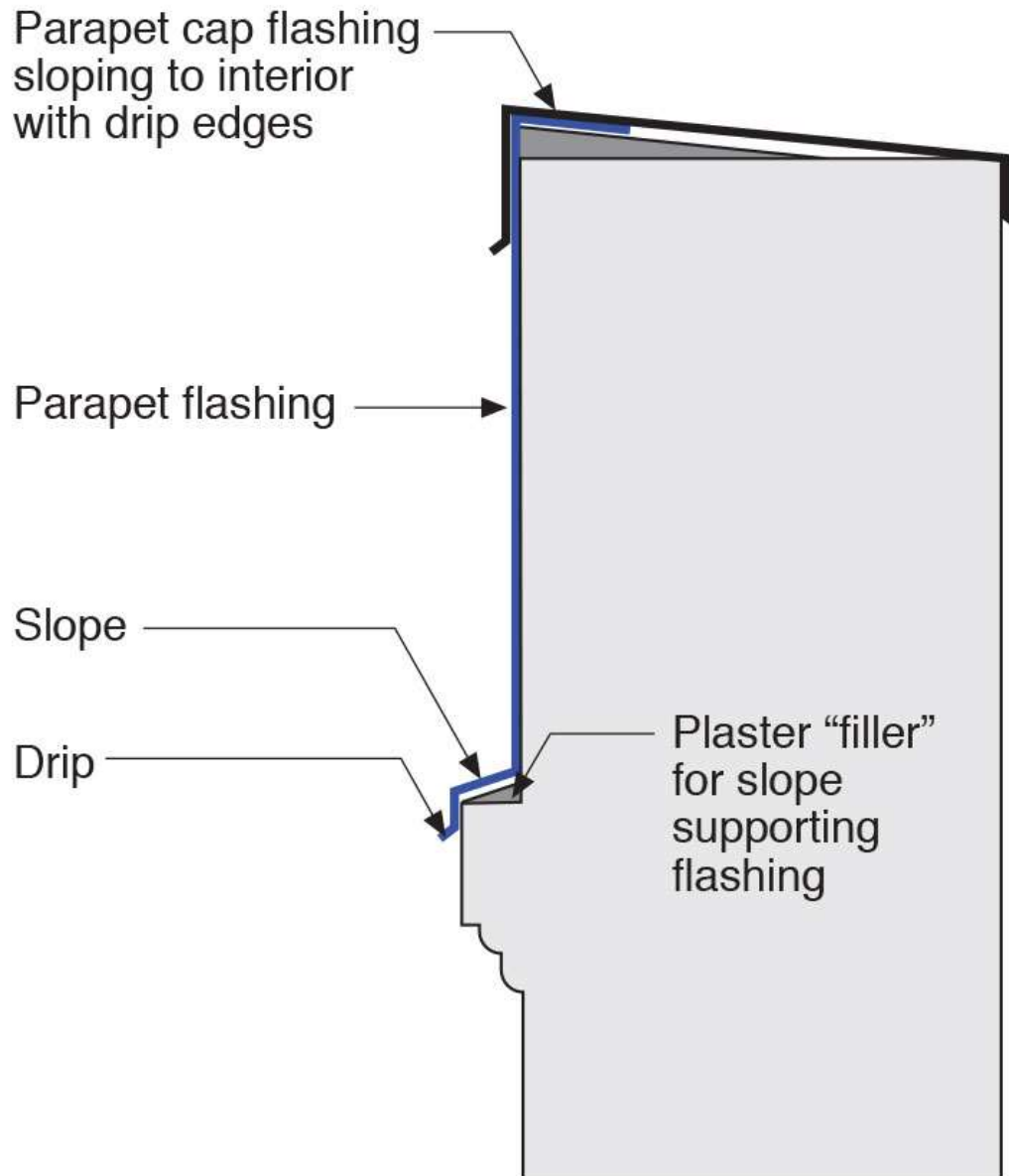


















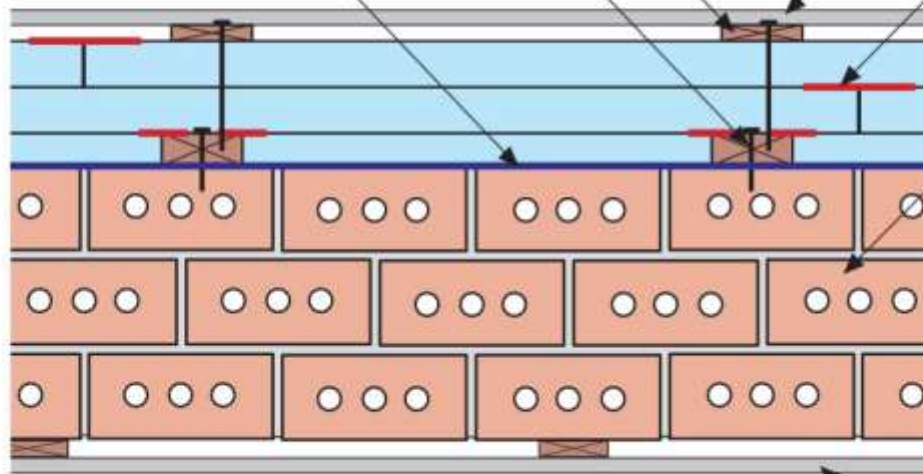




1x4 wood furring attached through rigid insulation to 2x4 wood furring

2x4 wood furring mechanically attached to masonry wall

Fluid-applied water control layer and air control layer



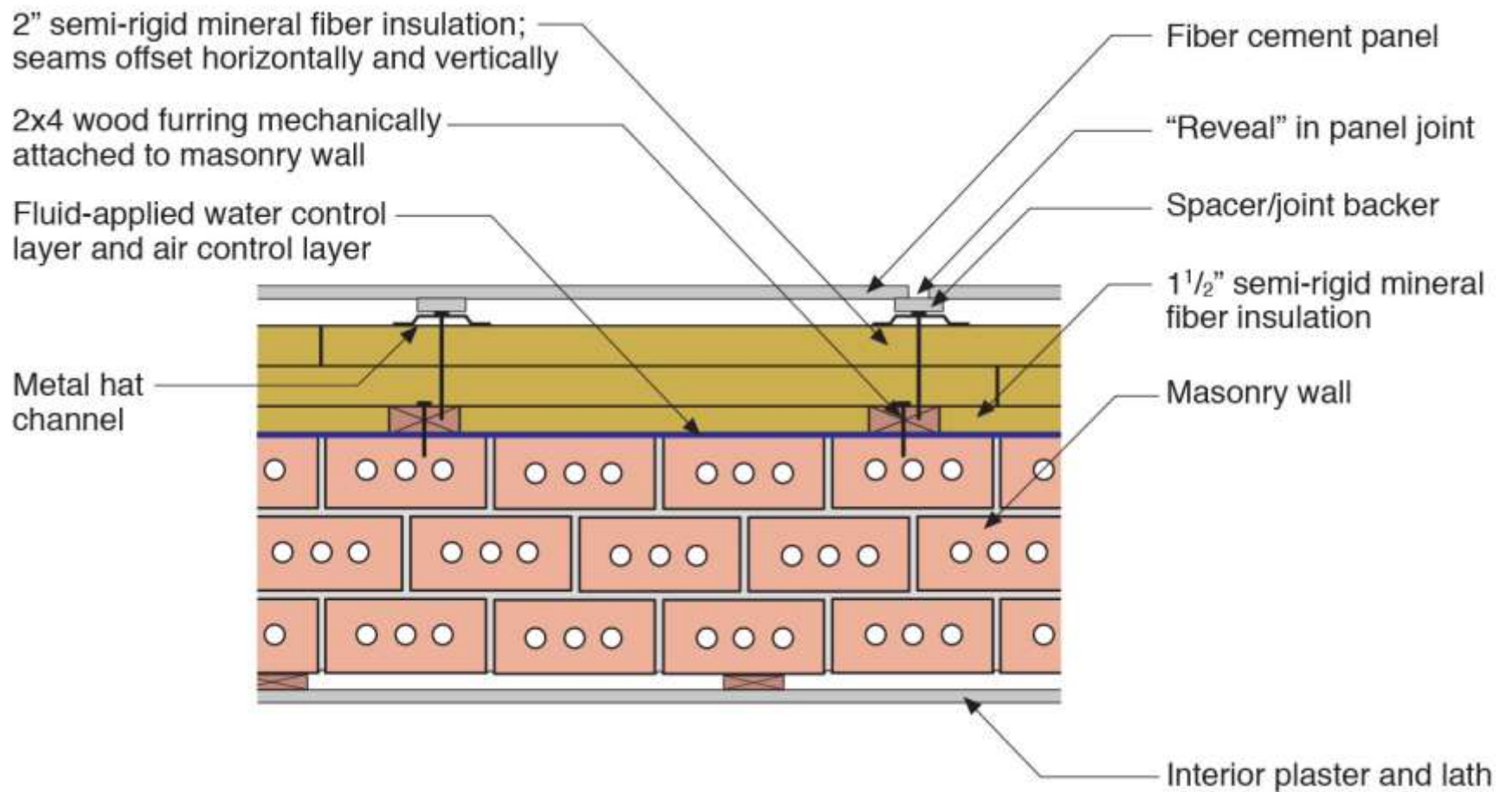
Cladding

Joints offset horizontally and vertically with each layer taped

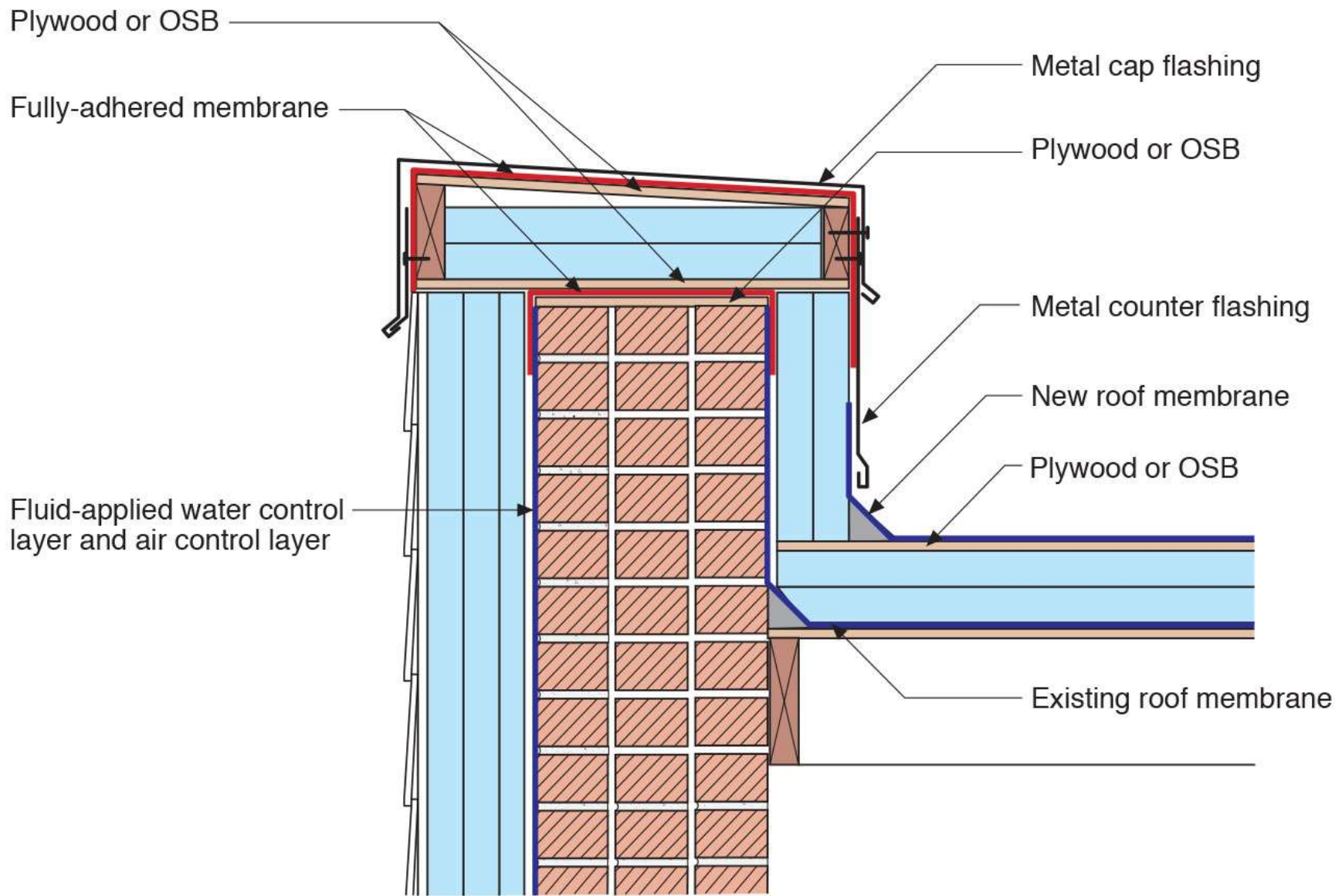
Masonry wall

Interior plaster and lath













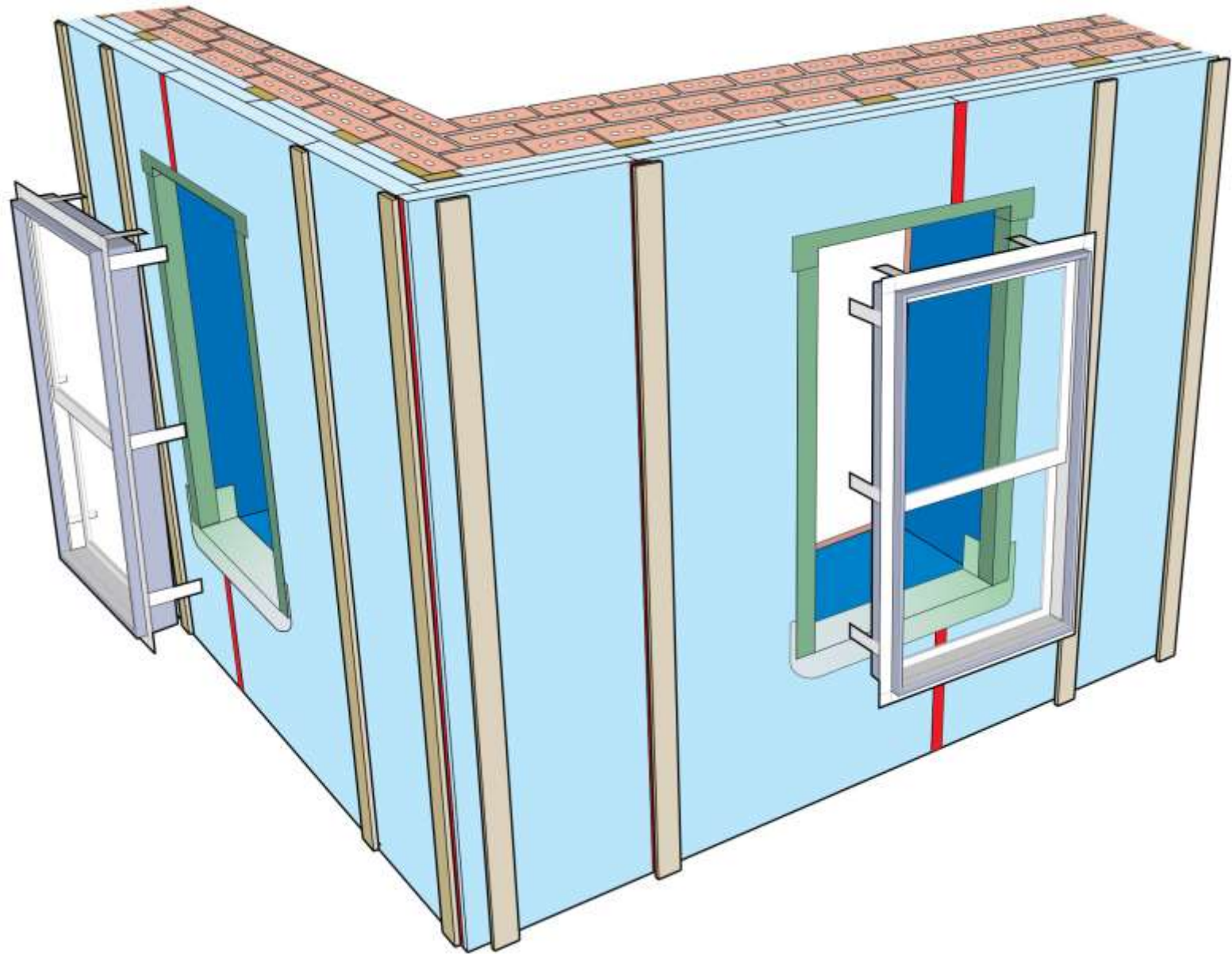












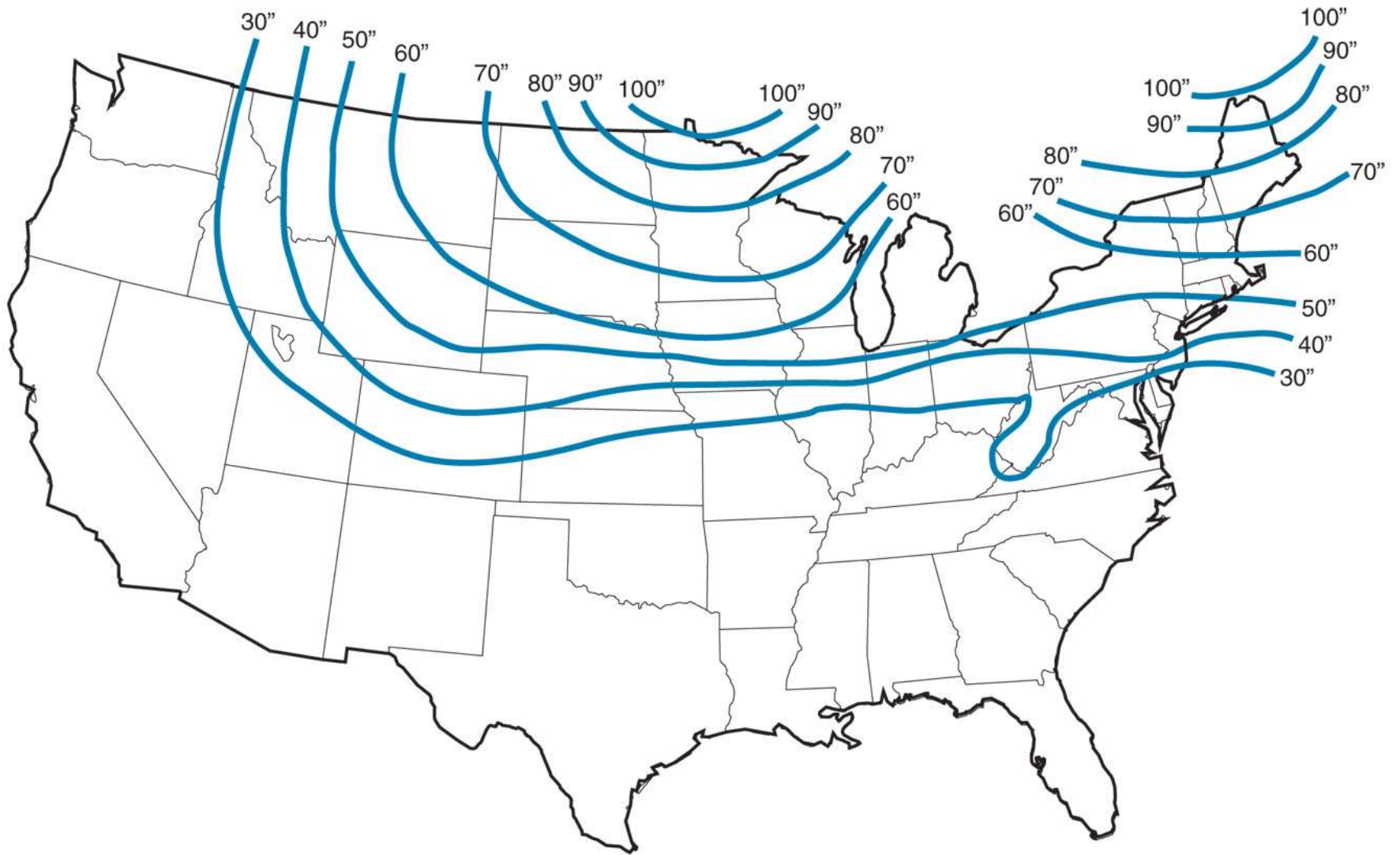












From the US Army Corps Engineers Extreme Frost Penetration (in inches) based on state averages.

