

Joseph Lstiburek, Ph.D., P.Eng, ASHRAE Fellow

# Building Science

Adventures In Building Science

presented by [www.buildingscience.com](http://www.buildingscience.com)

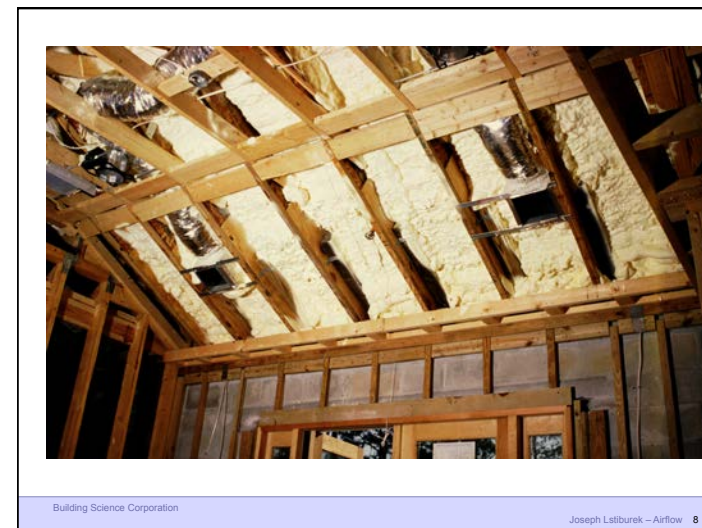
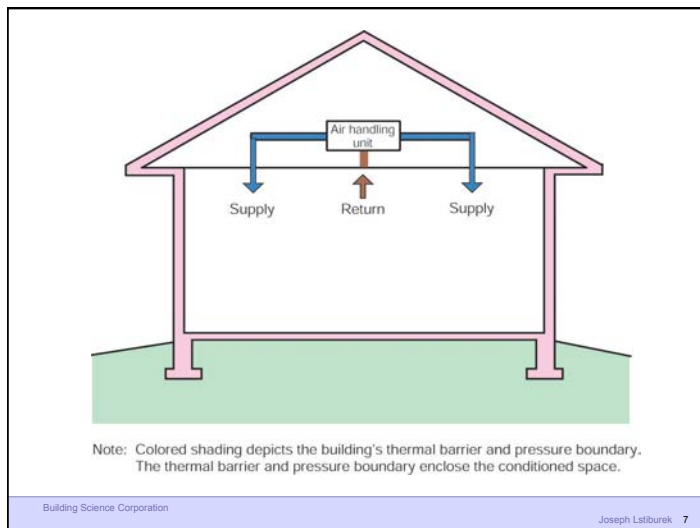
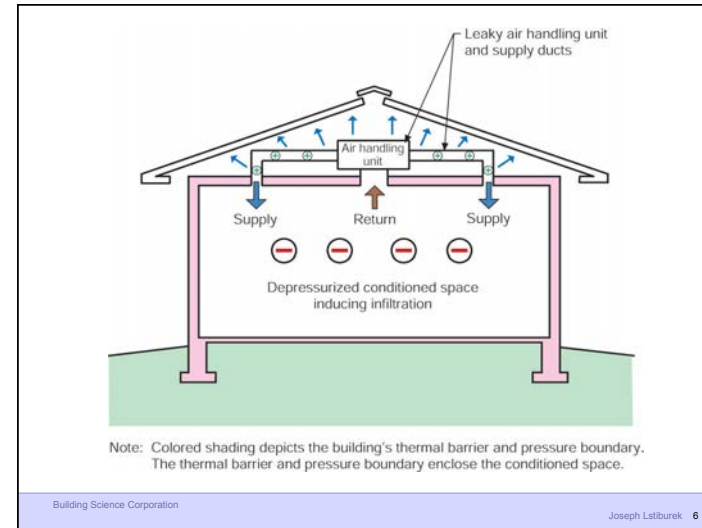
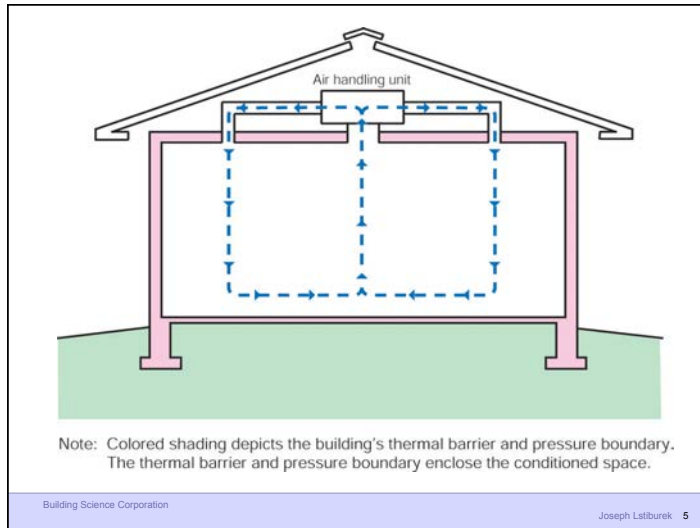


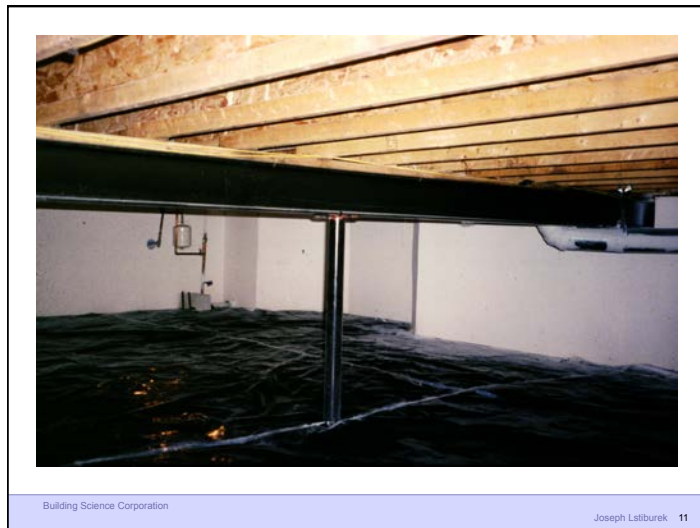
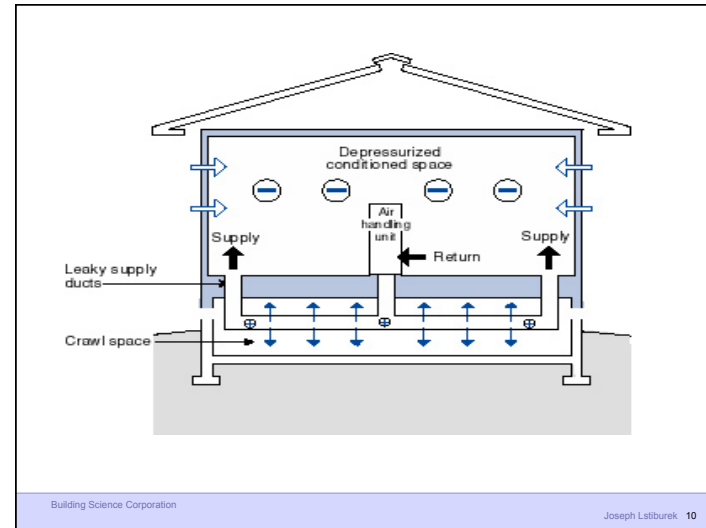
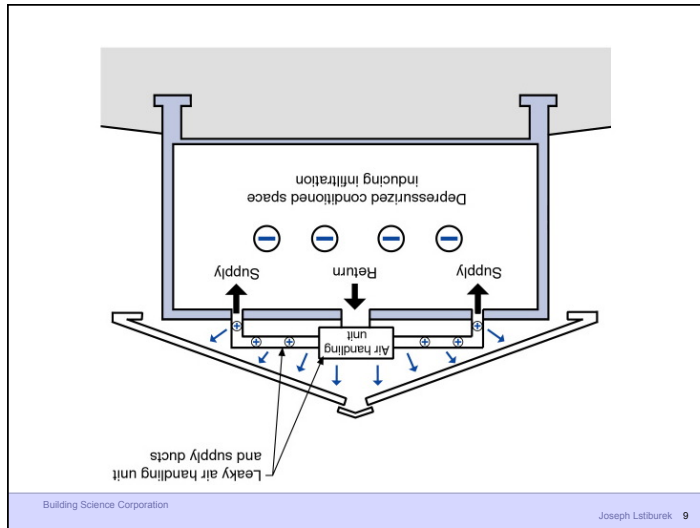
## Duct Leakage Should Be Less Than 5% of Rated Flow As Tested by Pressurization To 25 Pascals

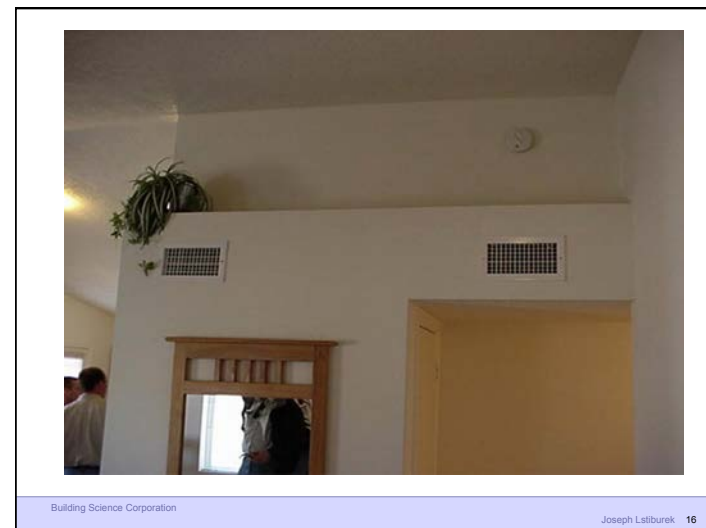
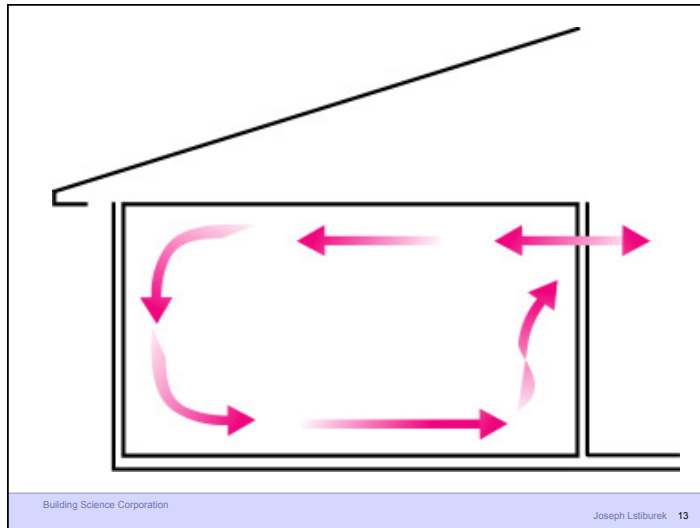
Building Science Corporation

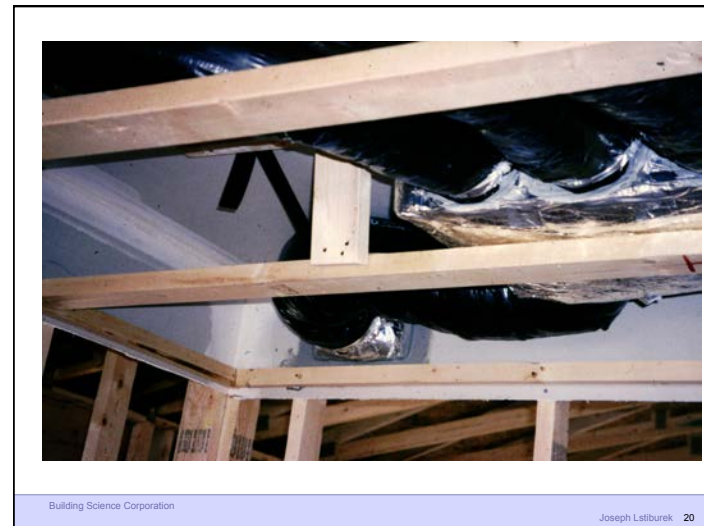
Joseph Lstiburek 3

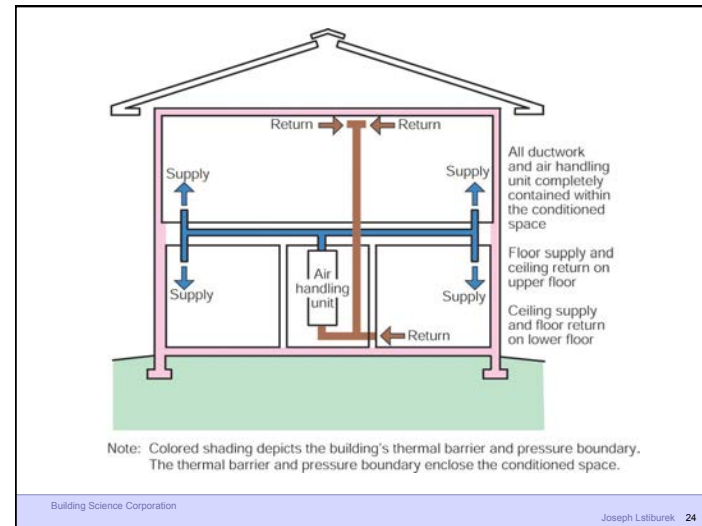
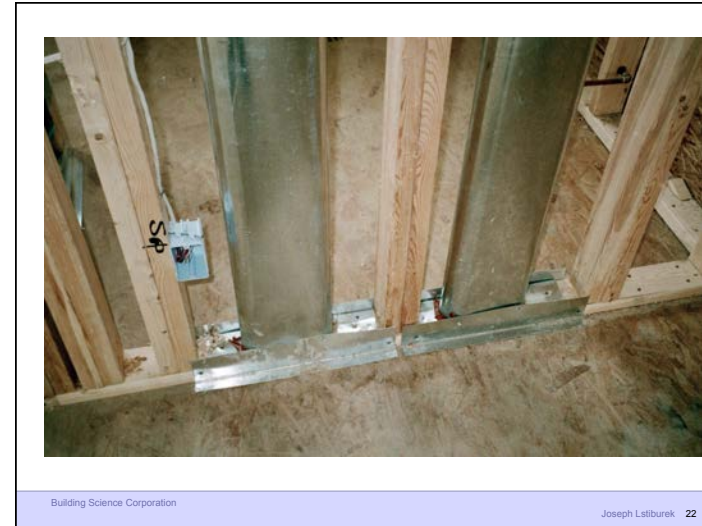


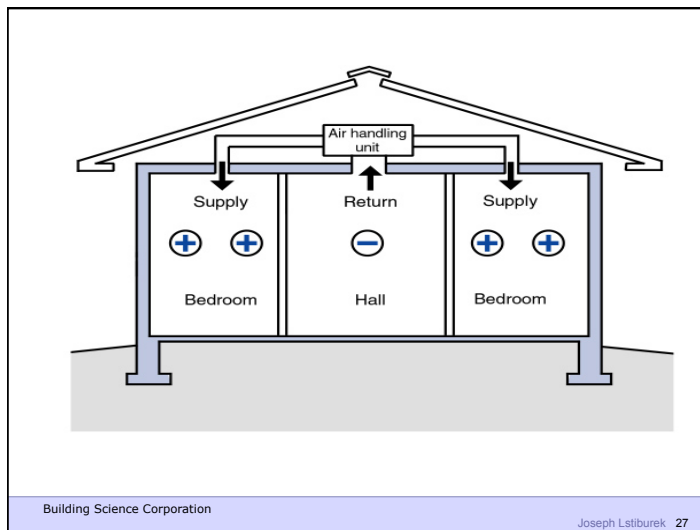
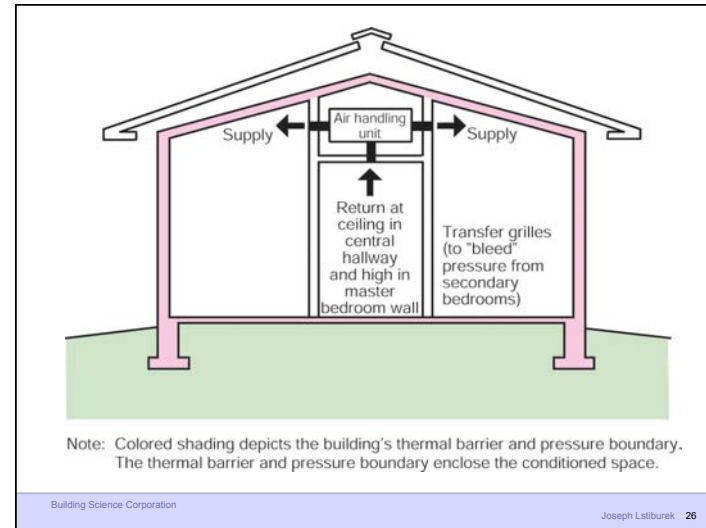
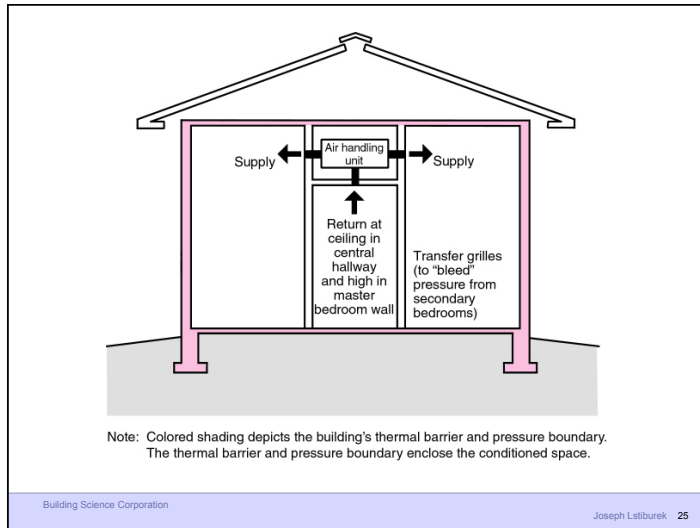


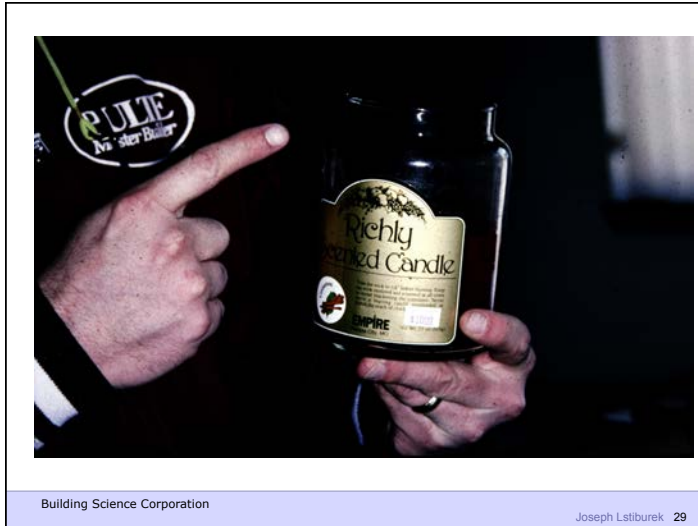




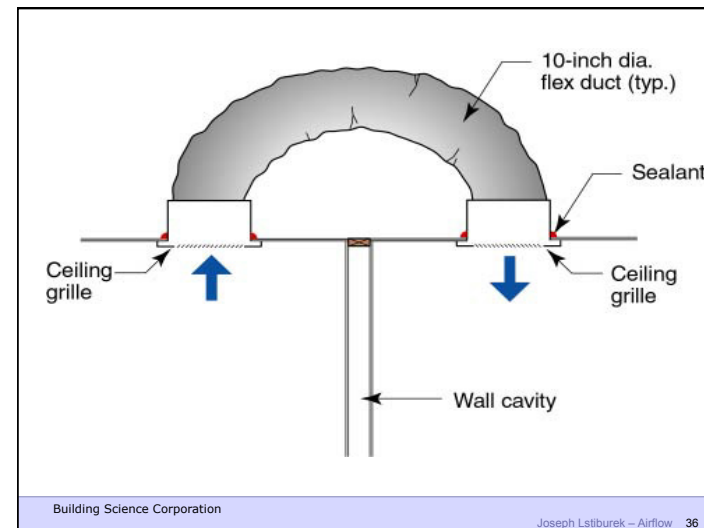
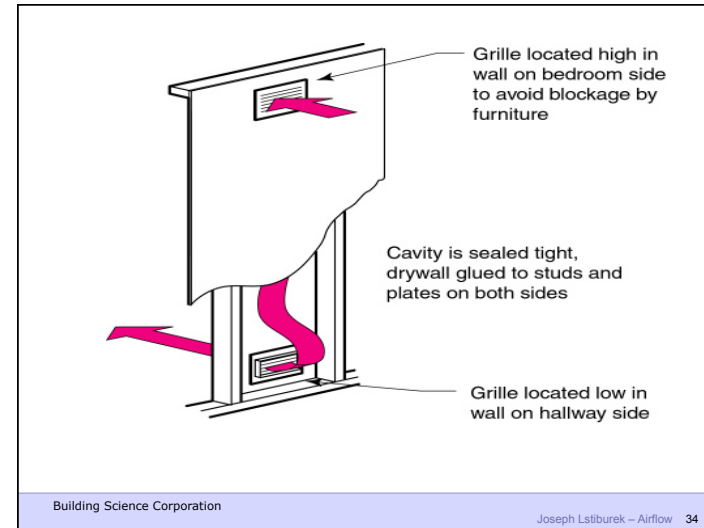


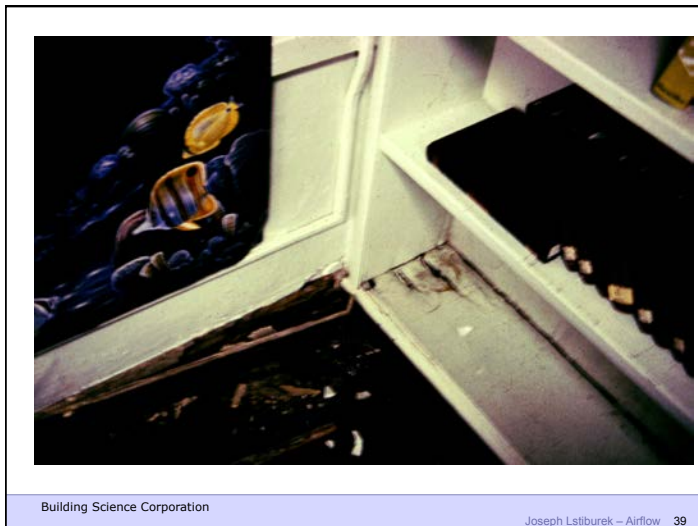
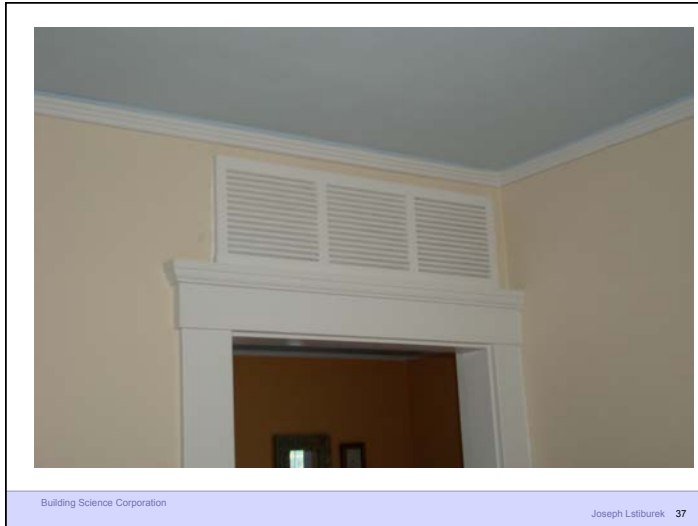


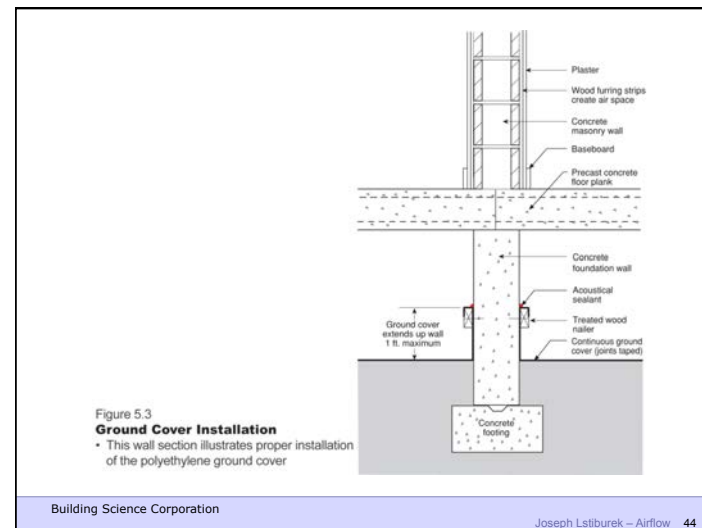
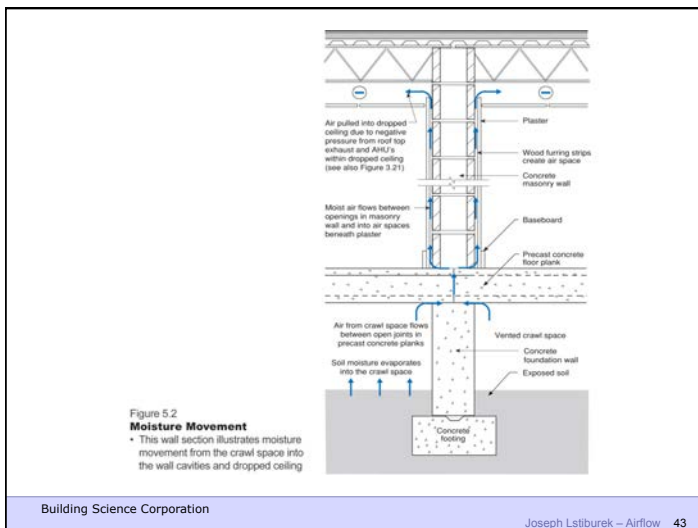
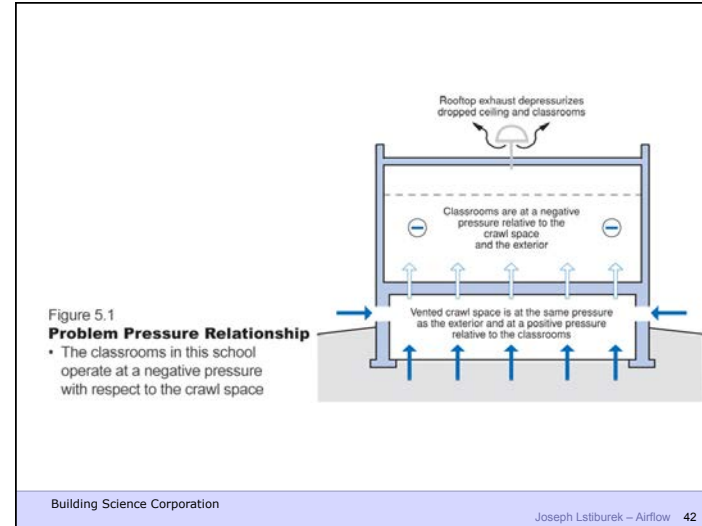


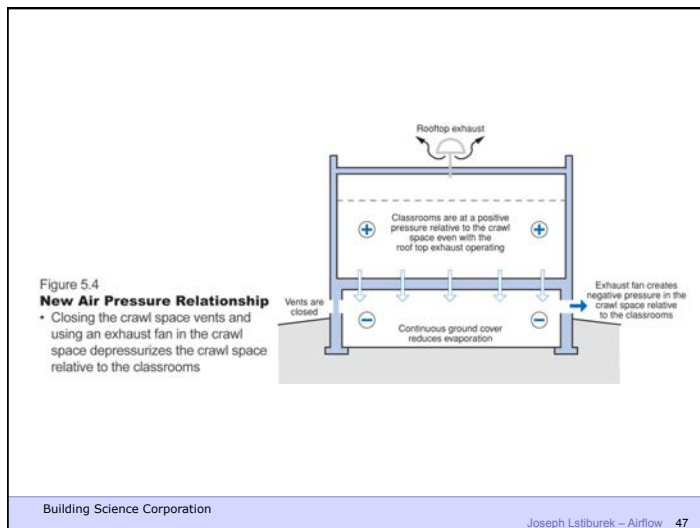
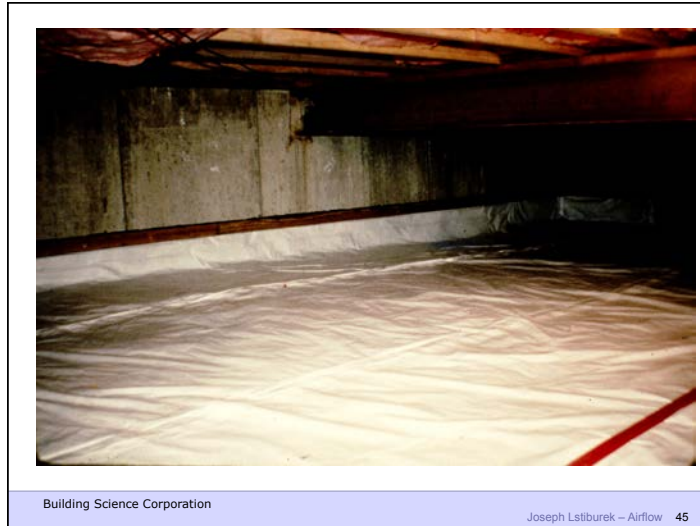


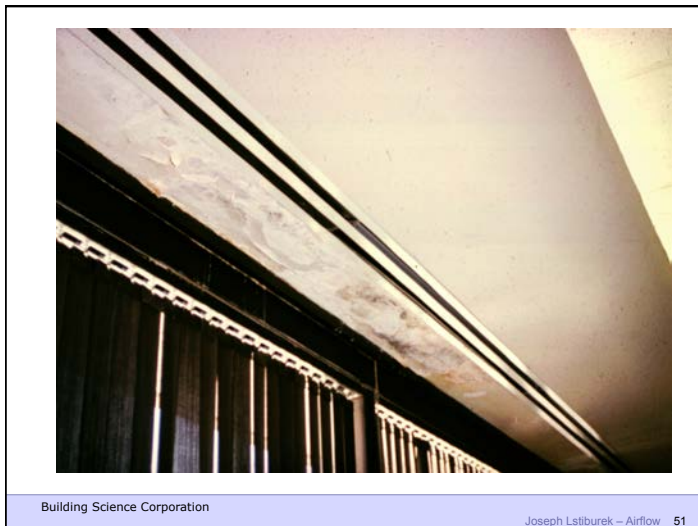


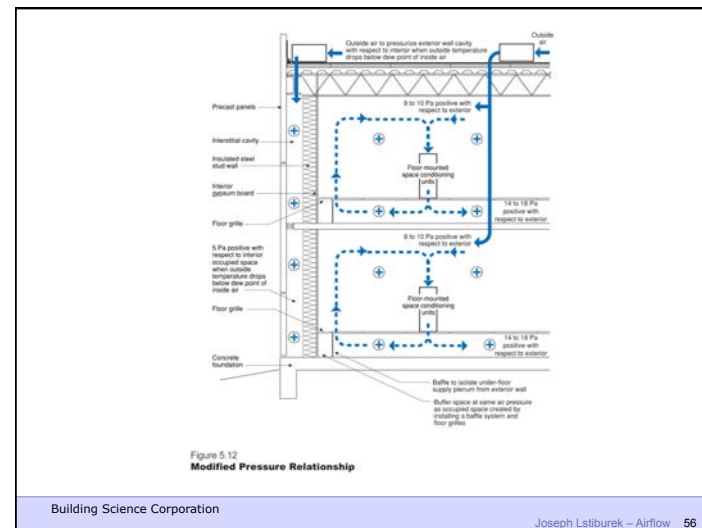
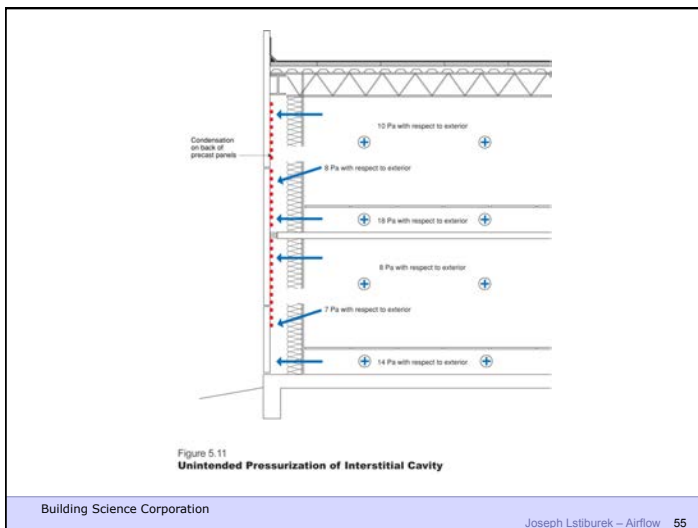
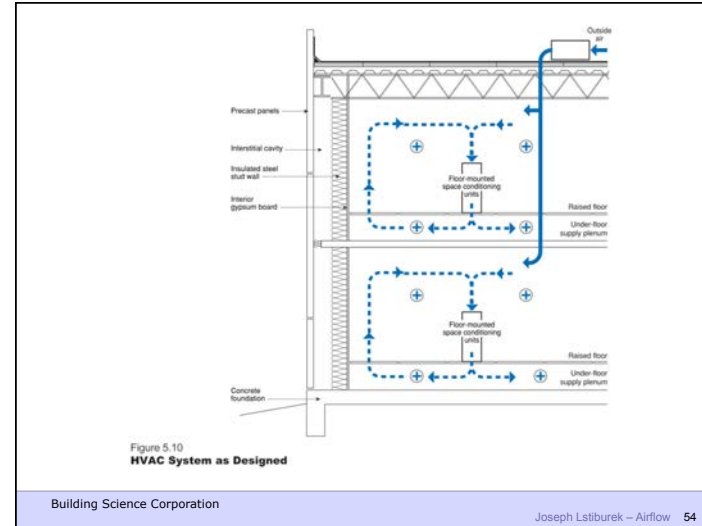
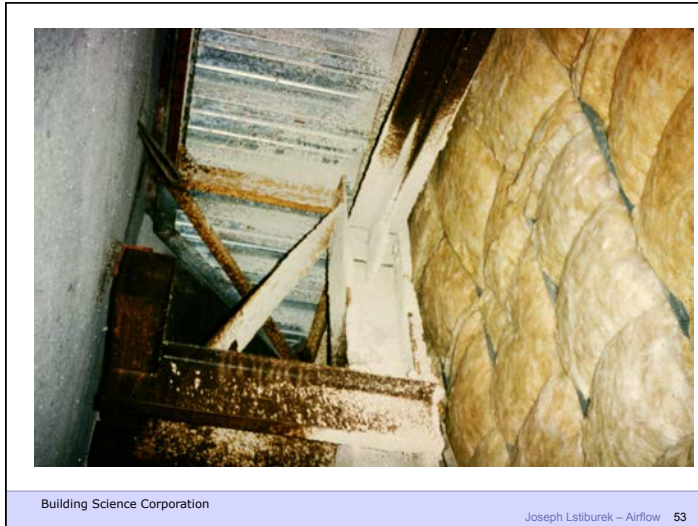








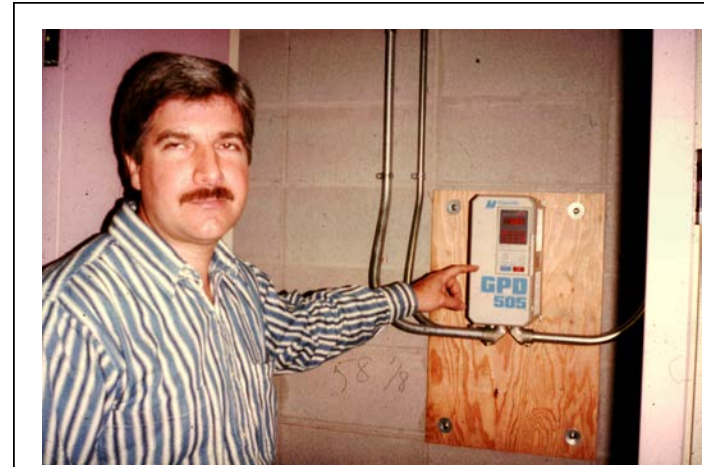






Building Science Corporation

Joseph Lstiburek – Airflow 57



Building Science Corporation

Joseph Lstiburek – Airflow 58



Building Science Corporation

Joseph Lstiburek – Airflow 59



Building Science Corporation

Joseph Lstiburek – Airflow 60

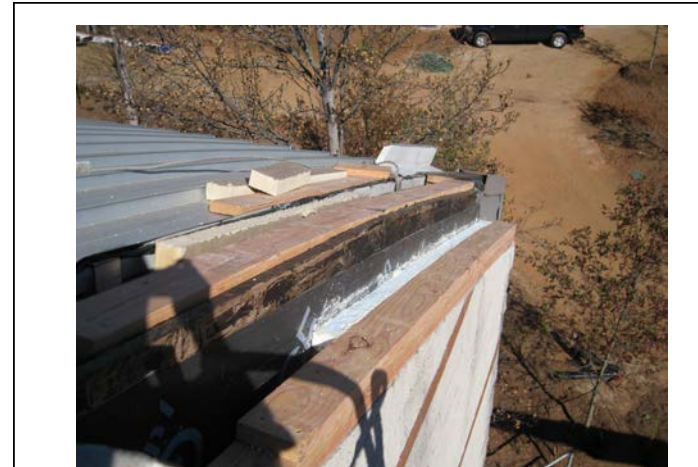






Building Science Corporation

Joseph Lstiburek – Airflow 65



Building Science 2007

Joseph Lstiburek – Airflow 66



Building Science 2007

Joseph Lstiburek – Airflow 67